



# Cattle on Feed

---

Released April 14, 2000, by the National Agricultural Statistics Service (NASS), Agricultural Statistics Board, U.S. Department of Agriculture. For information on "Cattle on Feed" call Greg Thessen at (202) 720-3040, office hours 7:30 a.m. to 4:00 p.m. ET.

## U.S. Cattle on Feed Up 8 Percent

**Cattle and calves on feed** for slaughter market in the United States for feedlots with capacity of 1,000 or more head totaled 11.19 million head on April 1, 2000. The inventory was 8 percent above April 1, 1999 and 11 percent above April 1, 1998. The inventory included 6.79 million steers and steer calves, up 8 percent from the previous year. This group accounted for 61 percent of the total inventory. Heifers and heifer calves accounted for 4.35 million head, up 7 percent from 1999.

**Placements** in feedlots during March totaled 2.02 million, 1 percent below 1999 but 18 percent above 1998. Net placements were 1.92 million. During March, placements of cattle and calves weighing less than 600 pounds were 331,000, 600-699 pounds were 406,000, 700-799 pounds were 715,000, and 800 pounds and greater were 564,000.

**Marketings** of fed cattle during March totaled 2.05 million, 3 percent above 1999 and 10 percent above 1998.

**Other disappearance** totaled 101,000 during March, 42 percent above 1999 and 7 percent above 1998.

## Cattle on Feed in Historic 7 States Up 8 Percent

**Cattle on feed** April 1, 2000, in the historic 7 States for feedlots with capacity of 1,000 or more head totaled 9.57 million, up 8 percent from the previous year and 11 percent above April 1, 1998. The inventory included 5.74 million steers and steer calves, up 7 percent from the previous year. This group accounted for 60 percent of the total inventory. Heifers and heifer calves accounted for 3.80 million head, up 8 percent from 1999.

**Placements** in feedlots during March totaled 1.72 million, 1 percent below 1999 but 21 percent above 1998.

**Marketings** during March totaled 1.76 million, 6 percent above 1999 and 12 percent above 1998.

**Other disappearance** during March was 74,000 head, 42 percent above 1999 and 7 percent above 1998.

**Cattle on Feed: Number on Feed, Placements, Marketings, and  
Other Disappearance, 1,000+ Capacity Feedlots,  
United States, April 1, 1998-2000**

Item	Number			2000 as % of	
	1998	1999	2000	1998	1999
	<i>1,000 Head</i>	<i>1,000 Head</i>	<i>1,000 Head</i>	<i>Percent</i>	<i>Percent</i>
On Feed Mar 1 <sup>1</sup>	10,376	10,420	11,330	109	109
Placed on Feed During Mar	1,709	2,031	2,016	118	99
Fed Cattle Marketed During Mar	1,873	1,986	2,053	110	103
Other Disappearance During Mar <sup>2</sup>	94	71	101	107	142
On Feed Apr 1 <sup>1</sup>	10,118	10,394	11,192	111	108

<sup>1</sup> Cattle and calves on feed are animals for slaughter market being fed a ration of grain or other concentrates and are expected to produce a carcass that will grade select or better.

<sup>2</sup> Includes death losses, movement from feedlots to pastures and shipments to other feedlots for further feeding.

**Cattle on Feed: Number on Feed, Placements, Marketings, and  
Other Disappearance, 1,000+ Capacity Feedlots,  
United States, March 1, 1998-2000**

Item	Number			2000 as % of	
	1998	1999	2000	1998	1999
	<i>1,000 Head</i>	<i>1,000 Head</i>	<i>1,000 Head</i>	<i>Percent</i>	<i>Percent</i>
On Feed Feb 1 <sup>1</sup>	10,794	10,509	11,574	107	110
Placed on Feed During Feb	1,496	1,808	1,880	126	104
Fed Cattle Marketed During Feb	1,845	1,832	2,046	111	112
Other Disappearance During Feb <sup>2</sup>	69	65	78	113	120
On Feed Mar 1 <sup>1</sup>	10,376	10,420	11,330	109	109

<sup>1</sup> Cattle and calves on feed are animals for slaughter market being fed a ration of grain or other concentrates and are expected to produce a carcass that will grade select or better.

<sup>2</sup> Includes death losses, movement from feedlots to pastures and shipments to other feedlots for further feeding.

**Cattle on Feed: Number on Feed by Class, 1,000+ Capacity Feedlots,  
United States, April 1, 1998-2000**

Item	Number			2000 as % of	
	1998	1999	2000	1998	1999
	<i>1,000 Head</i>	<i>1,000 Head</i>	<i>1,000 Head</i>	<i>Percent</i>	<i>Percent</i>
Class on Feed Apr 1					
Steers and Steer Calves	6,188	6,293	6,785	110	108
Heifers and Heifer Calves	3,879	4,053	4,350	112	107
Cows and Bulls	51	48	57	112	119

**Cattle on Feed: Number on Feed, Placements, Marketings, and  
Other Disappearance, 1,000+ Capacity Feedlots,  
7 States, April 1, 1998-2000<sup>1</sup>**

Item	Number			2000 as % of	
	1998	1999	2000	1998	1999
	<i>1,000 Head</i>	<i>1,000 Head</i>	<i>1,000 Head</i>	<i>Percent</i>	<i>Percent</i>
On Feed Mar 1 <sup>2</sup>	8,835	8,878	9,695	110	109
Placed on Feed During Mar	1,421	1,741	1,716	121	99
Fed Cattle Marketed During Mar	1,580	1,668	1,764	112	106
Other Disappearance During Mar <sup>3</sup>	69	52	74	107	142
On Feed Apr 1 <sup>2</sup>	8,607	8,899	9,573	111	108

<sup>1</sup> The 7 States include AZ, CA, CO, IA, KS, NE, and TX.

<sup>2</sup> Cattle and calves on feed are animals for slaughter market being fed a ration of grain or other concentrates and are expected to produce a carcass that will grade select or better.

<sup>3</sup> Includes death losses, movement from feedlots to pastures and shipments to other feedlots for further feeding.

**Cattle on Feed: Number on Feed, Placements, Marketings, and  
Other Disappearance, 1,000+ Capacity Feedlots,  
7 States, March 1, 1998-2000<sup>1</sup>**

Item	Number			2000 as % of	
	1998	1999	2000	1998	1999
	<i>1,000 Head</i>	<i>1,000 Head</i>	<i>1,000 Head</i>	<i>Percent</i>	<i>Percent</i>
On Feed Feb 1 <sup>2</sup>	9,180	8,917	9,885	108	111
Placed on Feed During Feb	1,290	1,563	1,606	124	103
Fed Cattle Marketed During Feb	1,579	1,560	1,749	111	112
Other Disappearance During Feb <sup>3</sup>	56	42	47	84	112
On Feed Mar 1 <sup>2</sup>	8,835	8,878	9,695	110	109

<sup>1</sup> The 7 States include AZ, CA, CO, IA, KS, NE, and TX.

<sup>2</sup> Cattle and calves on feed are animals for slaughter market being fed a ration of grain or other concentrates and are expected to produce a carcass that will grade select or better.

<sup>3</sup> Includes death losses, movement from feedlots to pastures and shipments to other feedlots for further feeding.

**Cattle on Feed: Number on Feed by Class, 1,000+ Capacity Feedlots,  
7 States, April 1, 1998-2000<sup>1</sup>**

Item	Number			2000 as % of	
	1998	1999	2000	1998	1999
	<i>1,000 Head</i>	<i>1,000 Head</i>	<i>1,000 Head</i>	<i>Percent</i>	<i>Percent</i>
Class on Feed Apr 1					
Steers and Steer Calves	5,245	5,341	5,736	109	107
Heifers and Heifer Calves	3,325	3,527	3,800	114	108
Cows and Bulls	37	31	37	100	119

<sup>1</sup> The 7 States include AZ, CA, CO, IA, KS, NE, and TX.

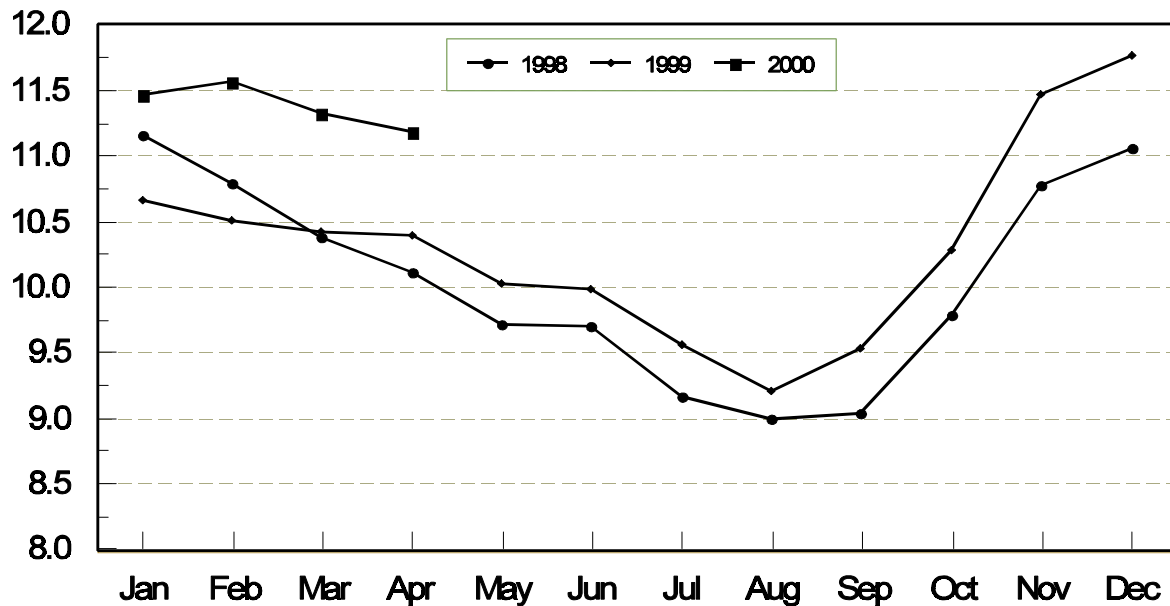
**Cattle on Feed: Number on Feed, 1,000+ Capacity Feedlots,  
by Month, State, and United States 1999-2000 <sup>1</sup>**

State	Apr 1, 1999	Mar 1, 2000	Apr 1, 2000		
			Number	as % of 1999	as % of Mar
	<i>1,000 Head</i>	<i>1,000 Head</i>	<i>1,000 Head</i>	<i>Percent</i>	<i>Percent</i>
AZ	214	275	273	128	99
CA	385	405	405	105	100
CO	1,120	1,180	1,170	104	99
ID	280	305	320	114	105
IA	360	375	375	104	100
KS	2,080	2,320	2,280	110	98
NE	2,180	2,310	2,310	106	100
NM	94	105	93	99	89
OK	345	400	380	110	95
SD	182	200	200	110	100
TX	2,560	2,830	2,760	108	98
WA	179	210	221	123	105
Oth Sts	415	415	405	98	98
US	10,394	11,330	11,192	108	99

<sup>1</sup> Cattle and calves on feed are animals for slaughter market being fed a ration of grain or other concentrates and are expected to produce a carcass that will grade select or better.

**United States Cattle on Feed  
1,000+ Capacity Feedlots**

Million Head



**Cattle on Feed: Number Placed on Feed, 1,000+ Capacity Feedlots,  
by Month, State, and United States 1999-2000**

State	During Mar 1999	During Feb 2000	During Mar 2000		
			Number	as % of 1999	as % of Feb
	<i>1,000 Head</i>	<i>1,000 Head</i>	<i>1,000 Head</i>	<i>Percent</i>	<i>Percent</i>
AZ	39	27	30	77	111
CA	55	50	59	107	118
CO	240	250	250	104	100
ID	58	70	69	119	99
IA	57	39	57	100	146
KS	440	420	400	91	95
NE	380	390	400	105	103
NM	13	10	13	100	130
OK	69	54	73	106	135
SD	45	37	34	76	92
TX	530	430	520	98	121
WA	46	50	53	115	106
Oth Sts	59	53	58	98	109
US	2,031	1,880	2,016	99	107

**Cattle on Feed: Number Placed on Feed by Weight Group, 1,000+ Capacity  
Feedlots, by Month, State, and United States, 1999-2000**

State	During March									
	Less 600		600-699		700-799		800 Plus		Total	
	1999	2000	1999	2000	1999	2000	1999	2000	1999	2000
	<i>1,000 Head</i>	<i>1,000 Head</i>	<i>1,000 Head</i>	<i>1,000 Head</i>	<i>1,000 Head</i>	<i>1,000 Head</i>	<i>1,000 Head</i>	<i>1,000 Head</i>	<i>1,000 Head</i>	<i>1,000 Head</i>
CO	50	26	55	57	82	91	53	76	240	250
KS	45	50	105	80	190	160	100	110	440	400
NE	38	45	67	63	148	154	127	138	380	400
TX	109	100	165	140	204	190	52	90	530	520
Oth Sts	115	110	76	66	120	120	130	150	441	446
US	357	331	468	406	744	715	462	564	2,031	2,016
	During February									
	Less 600		600-699		700-799		800 Plus		Total	
	1999	2000	1999	2000	1999	2000	1999	2000	1999	2000
	<i>1,000 Head</i>	<i>1,000 Head</i>	<i>1,000 Head</i>	<i>1,000 Head</i>	<i>1,000 Head</i>	<i>1,000 Head</i>	<i>1,000 Head</i>	<i>1,000 Head</i>	<i>1,000 Head</i>	<i>1,000 Head</i>
CO	37	36	52	58	85	88	61	68	235	250
KS	60	60	145	110	125	150	60	100	390	420
NE	49	40	103	103	138	138	120	109	410	390
TX	92	110	124	145	148	125	36	50	400	430
Oth Sts	95	105	73	60	110	95	95	130	373	390
US	333	351	497	476	606	596	372	457	1,808	1,880

**Cattle on Feed: Number Marketed, 1,000+ Capacity Feedlots,  
by Month, State, and United States 1999-2000**

State	During Mar 1999	During Feb 2000	During Mar 2000		
			Number	as % of 1999	as % of Feb
	<i>1,000 Head</i>	<i>1,000 Head</i>	<i>1,000 Head</i>	<i>Percent</i>	<i>Percent</i>
AZ	27	24	27	100	113
CA	50	52	51	102	98
CO	240	265	250	104	94
ID	49	57	47	96	82
IA	56	48	56	100	117
KS	380	430	420	111	98
NE	350	440	390	111	89
NM	24	15	22	92	147
OK	86	69	87	101	126
SD	46	36	32	70	89
TX	565	490	570	101	116
WA	42	45	38	90	84
Oth Sts	71	75	63	89	84
US	1,986	2,046	2,053	103	100

**Cattle on Feed: Other Disappearance, 1,000+ Capacity Feedlots,  
by Month, State, and United States 1999-2000 <sup>1</sup>**

State	During Mar 1999	During Feb 2000	During Mar 2000		
			Number	as % of 1999	as % of Feb
	<i>1,000 Head</i>	<i>1,000 Head</i>	<i>1,000 Head</i>	<i>Percent</i>	<i>Percent</i>
AZ	1	3	5	500	167
CA	5	8	8	160	100
CO	10	5	10	100	200
ID	4	8	7	175	88
IA	1	1	1	100	100
KS	10	10	20	200	200
NE	10	10	10	100	100
NM	2	3	3	150	100
OK	3	5	6	200	120
SD	1	1	2	200	200
TX	15	10	20	133	200
WA	6	6	4	67	67
Oth Sts	3	8	5	167	63
US	71	78	101	142	129

<sup>1</sup> Includes death loss, movement from feedlots to pasture, and shipments to other feedlots for further feeding.

**Cattle on Feed: Number on Feed by Class, 1,000+ Capacity Feedlots,  
by Quarter, State, and United States, 1999-2000**

State	Steers & Steer Calves			Heifers & Heifer Calves			Cows and Bulls		
	Apr 1, 1999	Jan 1, 2000	Apr 1, 2000	Apr 1, 1999	Jan 1, 2000	Apr 1, 2000	Apr 1, 1999	Jan 1, 2000	Apr 1, 2000
	<i>1,000 Head</i>	<i>1,000 Head</i>	<i>1,000 Head</i>	<i>1,000 Head</i>	<i>1,000 Head</i>	<i>1,000 Head</i>	<i>1,000 Head</i>	<i>1,000 Head</i>	<i>1,000 Head</i>
AZ	206	252	260	8	20	13	0	0	0
CA	350	376	369	35	38	35	0	1	1
CO	695	650	680	420	520	485	5	10	5
ID	186	212	214	89	98	101	5	0	5
IA	220	240	237	140	135	138	0	0	0
KS	1,210	*1,360	1,340	860	*940	930	10	10	10
NE	1,280	1,340	1,370	885	940	920	15	20	20
NM	44	55	47	50	61	46	0	0	0
OK	215	265	240	130	164	140	0	1	0
SD	107	103	113	69	83	82	6	8	5
TX	1,380	1,550	1,480	1,179	1,349	1,279	1	1	1
WA	115	137	145	61	91	76	3	0	0
Oth Sts	285	300	290	127	135	105	3	10	10
US	6,293	*6,840	6,785	4,053	*4,574	4,350	48	61	57

\* Revised.

## Terms and Definitions of Cattle on Feed Estimates

**Cattle on feed** are animals being fed a ration of grain, silage, hay and/or protein supplement for slaughter market that are expected to produce a carcass that will grade select or better. It excludes cattle being "backgrounded only" for later sale as feeders or later placement in another feedlot.

**Placements** are cattle put into a feedlot, fed a ration which will produce a carcass that will grade select or better, and are intended for the slaughter market.

**Marketings** are cattle shipped out of feedlots to a slaughter market.

**Other disappearance** includes death loss, movement from feedlots to pasture, and shipments to other feedlots for further feeding.

## Reliability of Cattle on Feed Estimates

**Survey Procedures:** During January and July all known feedlots in the U.S. with capacity of 1,000 or more head are surveyed to provide data for cattle on feed estimates. During the other months, all known feedlots from 17 States are surveyed. The 17 States account for 98 percent of the cattle on feed.

**Estimating Procedures:** These cattle on feed estimates were prepared by the Agricultural Statistics Board after reviewing recommendations and analysis submitted by each State office. Regional and State survey data were reviewed for reasonableness with each other and with estimates from the previous month when setting the current estimates.

**Revision Policy:** Revisions to previous estimates are made to improve month to month relationships. Estimates for the previous month are subject to revision in all States each month when current estimates are made. In February, all monthly estimates for the previous year, and the number of feedlots and annual marketings from two years ago are reviewed and subject to revisions. The reviews are primarily based on slaughter data, state check-off or brand data, and any other data that may have been received after the original estimate was made. Estimates will also be reviewed after data from the Census of Agriculture are available. No revisions will be made after that date and estimates become final.

**Reliability:** Since all 1000+ capacity cattle on feed operators in every State are not included in the monthly survey, survey estimates are subject to sampling variability. Survey results are also subject to non-sampling errors such as omissions, duplications, and mistakes in reporting, recording, and processing the data. The effects of these errors cannot be measured directly. They are minimized through rigid quality controls in the data collection process and through a careful review of all reported data for consistency and reasonableness.



The next "Cattle on Feed" report will be released at 3 p.m. ET on May 19, 2000.

The United States Department of Agriculture (USDA) prohibits discrimination in all its programs on the basis of race, color, national origin, gender, religion, age, disability, political beliefs, sexual orientation, and marital or family status. (Not all prohibited bases apply to all programs.) Persons with disabilities who require alternative means for communication of program information (braille, large print, audiotape, etc.) should contact the USDA's TARGET Center at 202-720-2600 (voice and TDD).

To file a complaint of discrimination, write USDA, Director, Office of Civil Rights, Room 326-W, Whitten Building, 14th and Independence Avenue, SW, Washington, D.C., 20250-9410, or call 202-720-5964 (voice or TDD). USDA is an equal opportunity provider and employer.

## ACCESS TO REPORTS!!

---

For your convenience, there are several ways to obtain NASS reports, data products, and services:

### INTERNET ACCESS

All NASS reports are available free of charge on the worldwide Internet. For access, connect to the Internet and go to the NASS Home Page at: <http://www.usda.gov/nass/>. Select "Today's Reports" or Publications and then Reports by Calendar or Publications and then Search, by Title or Subject.

### E-MAIL SUBSCRIPTION

There are two options for subscribing via e-mail. All NASS reports are available by subscription free of charge direct to your e-mail address. 1) Starting with the NASS Home Page at <http://www.usda.gov/nass/>, click on **Publications**, then click on the **Subscribe by E-mail** button which takes you to the page describing e-mail delivery of reports. Finally, click on **Go to the Subscription Page** and follow the instructions. 2) If you do NOT have Internet access, send an e-mail message to: [usda-reports@usda.mannlib.cornell.edu](mailto:usda-reports@usda.mannlib.cornell.edu). In the body of the message type the word: **list**.

### AUTOFAX ACCESS

NASSFax service is available for some reports from your fax machine. Please call 202-720-2000, using the handset attached to your fax. Respond to the voice prompts. Document 0411 is a list of available reports.

-----

### PRINTED REPORTS OR DATA PRODUCTS

CALL OUR TOLL-FREE ORDER DESK: 800-999-6779 (U.S. and Canada)  
Other areas, please call 703-834-0125 FAX: 703-834-0110  
(Visa, MasterCard, check, or money order acceptable for payment.)

-----

### ASSISTANCE

For **assistance** with general agricultural statistics or further information about NASS or its products or services, contact the **Agricultural Statistics Hotline** at 800-727-9540, 7:30 a.m. to 4:00 p.m. ET, or e-mail: [nass@nass.usda.gov](mailto:nass@nass.usda.gov).