



Cattle on Feed

Released May 19, 2000, by the National Agricultural Statistics Service (NASS), Agricultural Statistics Board, U.S. Department of Agriculture. For information on "Cattle on Feed" call Greg Thessen at (202) 720-3040, office hours 7:30 a.m. to 4:00 p.m. ET.

U.S. Cattle on Feed Up 9 Percent

Cattle and calves on feed for slaughter market in the United States for feedlots with capacity of 1,000 or more head totaled 10.91 million head on May 1, 2000. The inventory was 9 percent above May 1, 1999 and 12 percent above May 1, 1998.

Placements in feedlots during April totaled 1.69 million, slightly below 1999 but 6 percent above 1998. Net placements were 1.60 million. During April, placements of cattle and calves weighing less than 600 pounds were 299,000, 600-699 pounds were 307,000, 700-799 pounds were 568,000, and 800 pounds and greater were 511,000.

Marketings of fed cattle during April totaled 1.87 million, 4 percent below 1999 and 1 percent below 1998. April 2000 had two fewer weekdays than April 1999, which limited slaughter and affected the year-to-year relationship for marketings.

Other disappearance totaled 90,000 during April, 13 percent below 1999 and 2 percent below 1998.

Cattle on Feed in Historic 7 States Up 9 Percent

Cattle on feed May 1, 2000, in the historic 7 States for feedlots with capacity of 1,000 or more head totaled 9.36 million, up 9 percent from the previous year and 13 percent above May 1, 1998.

Placements in feedlots during April totaled 1.45 million, slightly above 1999 and 7 percent above 1998.

Marketings during April totaled 1.59 million, 5 percent below 1999 and down 1 percent from 1998. April 2000 had two fewer weekdays than April 1999, which limited slaughter and affected the year-to-year relationship for marketings.

Other disappearance during April was 71,000 head, 9 percent below 1999 but 16 percent above 1998.

**Cattle on Feed: Number on Feed, Placements, Marketings, and
Other Disappearance, 1,000+ Capacity Feedlots,
United States, May 1, 1998-2000**

Item	Number			2000 as % of	
	1998	1999	2000	1998	1999
	<i>1,000 Head</i>	<i>1,000 Head</i>	<i>1,000 Head</i>	<i>Percent</i>	<i>Percent</i>
On Feed Apr 1 ¹	10,118	10,394	*11,182	111	108
Placed on Feed During Apr	1,584	1,688	1,685	106	100
Fed Cattle Marketed During Apr	1,886	1,946	1,868	99	96
Other Disappearance During Apr ²	92	104	90	98	87
On Feed May 1 ¹	9,724	10,032	10,909	112	109

* Revised.

¹ Cattle and calves on feed are animals for slaughter market being fed a ration of grain or other concentrates and are expected to produce a carcass that will grade select or better.

² Includes death loss, movement from feedlots to pasture, and shipments to other feedlots for further feeding.

**Cattle on Feed: Number on Feed, Placements, Marketings, and
Other Disappearance, 1,000+ Capacity Feedlots,
United States, April 1, 1998-2000**

Item	Number			2000 as % of	
	1998	1999	2000	1998	1999
	<i>1,000 Head</i>	<i>1,000 Head</i>	<i>1,000 Head</i>	<i>Percent</i>	<i>Percent</i>
On Feed Mar 1 ¹	10,376	10,420	11,330	109	109
Placed on Feed During Mar	1,709	2,031	*2,011	118	99
Fed Cattle Marketed During Mar	1,873	1,986	*2,056	110	104
Other Disappearance During Mar ²	94	71	*103	110	145
On Feed Apr 1 ¹	10,118	10,394	*11,182	111	108

* Revised.

¹ Cattle and calves on feed are animals for slaughter market being fed a ration of grain or other concentrates and are expected to produce a carcass that will grade select or better.

² Includes death loss, movement from feedlots to pasture, and shipments to other feedlots for further feeding.

**Cattle on Feed: Number on Feed, Placements, Marketings, and
Other Disappearance, 1,000+ Capacity Feedlots,
7 States, May 1, 1998-2000¹**

Item	Number			2000 as % of	
	1998	1999	2000	1998	1999
	<i>1,000 Head</i>	<i>1,000 Head</i>	<i>1,000 Head</i>	<i>Percent</i>	<i>Percent</i>
On Feed Apr 1 ²	8,607	8,899	9,573	111	108
Placed on Feed During Apr	1,358	1,443	1,450	107	100
Fed Cattle Marketed During Apr	1,609	1,681	1,591	99	95
Other Disappearance During Apr ³	61	78	71	116	91
On Feed May 1 ²	8,295	8,583	9,361	113	109

¹ The 7 States include AZ, CA, CO, IA, KS, NE, and TX.

² Cattle and calves on feed are animals for slaughter market being fed a ration of grain or other concentrates and are expected to produce a carcass that will grade select or better.

³ Includes death loss, movement from feedlots to pasture, and shipments to other feedlots for further feeding.

**Cattle on Feed: Number on Feed, Placements, Marketings, and
Other Disappearance, 1,000+ Capacity Feedlots,
7 States, April 1, 1998-2000¹**

Item	Number			2000 as % of	
	1998	1999	2000	1998	1999
	<i>1,000 Head</i>	<i>1,000 Head</i>	<i>1,000 Head</i>	<i>Percent</i>	<i>Percent</i>
On Feed Mar 1 ²	8,835	8,878	9,695	110	109
Placed on Feed During Mar	1,421	1,741	1,716	121	99
Fed Cattle Marketed During Mar	1,580	1,668	1,764	112	106
Other Disappearance During Mar ³	69	52	74	107	142
On Feed Apr 1 ²	8,607	8,899	9,573	111	108

¹ The 7 States include AZ, CA, CO, IA, KS, NE, and TX.

² Cattle and calves on feed are animals for slaughter market being fed a ration of grain or other concentrates and are expected to produce a carcass that will grade select or better.

³ Includes death loss, movement from feedlots to pasture, and shipments to other feedlots for further feeding.

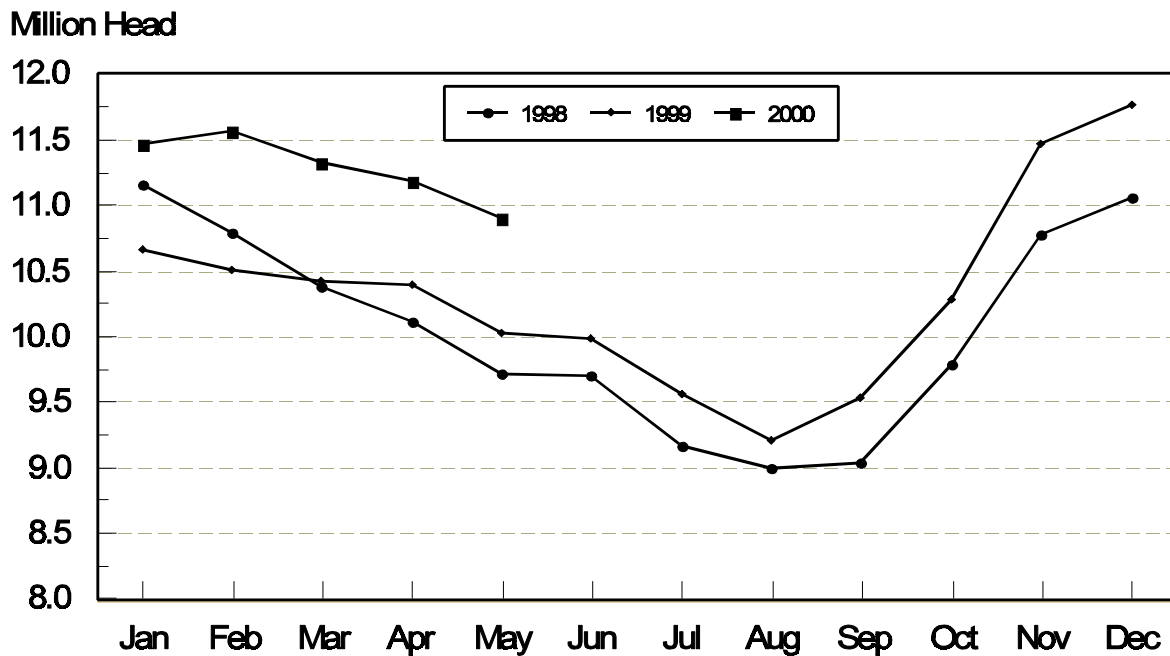
**Cattle on Feed: Number on Feed, 1,000+ Capacity Feedlots,
by Month, State, and United States 1999-2000 ¹**

State	May 1, 1999	Apr 1, 2000	May 1, 2000		
			Number	as % of 1999	as % of Apr
	<i>1,000 Head</i>	<i>1,000 Head</i>	<i>1,000 Head</i>	<i>Percent</i>	<i>Percent</i>
AZ	208	273	276	133	101
CA	375	405	405	108	100
CO	1,120	1,170	1,180	105	101
ID	280	320	315	113	98
IA	350	375	370	106	99
KS	1,980	2,280	2,230	113	98
NE	2,120	2,310	2,240	106	97
NM	85	93	90	106	97
OK	325	380	360	111	95
SD	180	200	180	100	90
TX	2,430	2,760	2,660	109	96
WA	179	*211	213	119	101
Oth Sts	400	405	390	98	96
US	10,032	*11,182	10,909	109	98

* Revised.

¹ Cattle and calves on feed are animals for slaughter market being fed a ration of grain or other concentrates and are expected to produce a carcass that will grade select or better.

**United States Cattle on Feed
1,000+ Capacity Feedlots**



**Cattle on Feed: Number Placed on Feed, 1,000+ Capacity Feedlots,
by Month, State, and United States 1999-2000**

State	During Apr 1999	During Mar 2000	During Apr 2000		
			Number	as % of 1999	as % of Mar
	<i>1,000 Head</i>	<i>1,000 Head</i>	<i>1,000 Head</i>	<i>Percent</i>	<i>Percent</i>
AZ	26	30	34	131	113
CA	45	59	56	124	95
CO	200	250	185	93	74
ID	57	69	49	86	71
IA	42	57	40	95	70
KS	350	400	370	106	93
NE	340	400	320	94	80
NM	15	13	16	107	123
OK	62	73	70	113	96
SD	31	34	16	52	47
TX	440	520	445	101	86
WA	33	*48	38	115	79
Oth Sts	47	58	46	98	79
US	1,688	*2,011	1,685	100	84

* Revised.

**Cattle on Feed: Number Placed on Feed by Weight Group, 1,000+ Capacity
Feedlots, by Month, State, and United States, 1999-2000**

State	During April									
	Under 600		600-699		700-799		800 Plus		Total	
	1999	2000	1999	2000	1999	2000	1999	2000	1999	2000
	<i>1,000 Head</i>	<i>1,000 Head</i>	<i>1,000 Head</i>	<i>1,000 Head</i>	<i>1,000 Head</i>	<i>1,000 Head</i>	<i>1,000 Head</i>	<i>1,000 Head</i>	<i>1,000 Head</i>	<i>1,000 Head</i>
CO	27	30	45	27	87	75	41	53	200	185
KS	45	55	70	70	140	140	95	105	350	370
NE	25	29	91	45	105	113	119	133	340	320
TX	106	80	123	115	145	145	66	105	440	445
Oth Sts	90	105	58	50	95	95	115	115	358	365
US	293	299	387	307	572	568	436	511	1,688	1,685
	During March									
	Under 600		600-699		700-799		800 Plus		Total	
	1999	2000	1999	2000	1999	2000	1999	2000	1999	2000
	<i>1,000 Head</i>	<i>1,000 Head</i>	<i>1,000 Head</i>	<i>1,000 Head</i>	<i>1,000 Head</i>	<i>1,000 Head</i>	<i>1,000 Head</i>	<i>1,000 Head</i>	<i>1,000 Head</i>	<i>1,000 Head</i>
CO	50	26	55	57	82	91	53	76	240	250
KS	45	50	105	80	190	160	100	110	440	400
NE	38	45	67	63	148	154	127	138	380	400
TX	109	100	165	140	204	190	52	90	530	520
Oth Sts	115	110	76	66	120	*115	130	150	441	*441
US	357	331	468	406	744	*710	462	564	2,031	*2,011

* Revised.

**Cattle on Feed: Number Marketed, 1,000+ Capacity Feedlots,
by Month, State, and United States 1999-2000**

State	During Apr 1999	During Mar 2000	During Apr 2000		
			Number	as % of 1999	as % of Mar
	<i>1,000 Head</i>	<i>1,000 Head</i>	<i>1,000 Head</i>	<i>Percent</i>	<i>Percent</i>
AZ	31	27	28	90	104
CA	50	51	49	98	96
CO	190	250	170	89	68
ID	43	47	43	100	91
IA	50	56	44	88	79
KS	420	420	390	93	93
NE	380	390	380	100	97
NM	23	22	19	83	86
OK	80	87	88	110	101
SD	29	32	33	114	103
TX	560	570	530	95	93
WA	30	*41	35	117	85
Oth Sts	60	63	59	98	94
US	1,946	*2,056	1,868	96	91

* Revised.

**Cattle on Feed: Other Disappearance, 1,000+ Capacity Feedlots,
by Month, State, and United States 1999-2000 ¹**

State	During Apr 1999	During Mar 2000	During Apr 2000		
			Number	as % of 1999	as % of Mar
	<i>1,000 Head</i>	<i>1,000 Head</i>	<i>1,000 Head</i>	<i>Percent</i>	<i>Percent</i>
AZ	1	5	3	300	60
CA	5	8	7	140	88
CO	10	10	5	50	50
ID	14	7	11	79	157
IA	2	1	1	50	100
KS	30	20	30	100	150
NE	20	10	10	50	100
NM	1	3	0	0	0
OK	2	6	2	100	33
SD	4	2	3	75	150
TX	10	20	15	150	75
WA	3	*6	1	33	17
Oth Sts	2	5	2	100	40
US	104	*103	90	87	87

* Revised.

¹ Includes death loss, movement from feedlots to pasture, and shipments to other feedlots for further feeding.

Terms and Definitions of Cattle on Feed Estimates

Cattle on feed are animals being fed a ration of grain, silage, hay and/or protein supplement for slaughter market that are expected to produce a carcass that will grade select or better. It excludes cattle being "backgrounded only" for later sale as feeders or later placement in another feedlot.

Placements are cattle put into a feedlot, fed a ration which will produce a carcass that will grade select or better, and are intended for the slaughter market.

Marketings are cattle shipped out of feedlots to a slaughter market.

Other disappearance includes death loss, movement from feedlots to pasture, and shipments to other feedlots for further feeding.

Reliability of Cattle on Feed Estimates

Survey Procedures: During January and July all known feedlots in the U.S. with capacity of 1,000 or more head are surveyed to provide data for cattle on feed estimates. During the other months, all known feedlots from 17 States are surveyed. The 17 States account for 98 percent of the cattle on feed in feedlots with capacity of 1,000 or more head.

Estimating Procedures: These cattle on feed estimates were prepared by the Agricultural Statistics Board after reviewing recommendations and analysis submitted by each State office. Regional and State survey data were reviewed for reasonableness with each other and with estimates from the previous month when setting the current estimates.

Revision Policy: Revisions to previous estimates are made to improve month to month relationships. Estimates for the previous month are subject to revision in all States each month when current estimates are made. In February, all monthly estimates for the previous year, and the number of feedlots and annual marketings from two years ago are reviewed and subject to revisions. The reviews are primarily based on slaughter data, state check-off or brand data, and any other data that may have been received after the original estimate was made. Estimates will also be reviewed after data from the Census of Agriculture are available. No revisions will be made after that date and estimates become final.

Reliability: Since all 1000+ capacity cattle on feed operators in every State are not included in the monthly survey, survey estimates are subject to sampling variability. Survey results are also subject to non-sampling errors such as omissions, duplications, and mistakes in reporting, recording, and processing the data. The effects of these errors cannot be measured directly. They are minimized through rigid quality controls in the data collection process and through a careful review of all reported data for consistency and reasonableness.

The next "Cattle on Feed" report will be released at 3 p.m. ET on June 16, 2000.

The United States Department of Agriculture (USDA) prohibits discrimination in all its programs on the basis of race, color, national origin, gender, religion, age, disability, political beliefs, sexual orientation, and marital or family status. (Not all prohibited bases apply to all programs.) Persons with disabilities who require alternative means for communication of program information (braille, large print, audiotape, etc.) should contact the USDA's TARGET Center at 202-720-2600 (voice and TDD).

To file a complaint of discrimination, write USDA, Director, Office of Civil Rights, Room 326-W, Whitten Building, 14th and Independence Avenue, SW, Washington, D.C., 20250-9410, or call 202-720-5964 (voice or TDD). USDA is an equal opportunity provider and employer.

ACCESS TO REPORTS!!

For your convenience, there are several ways to obtain NASS reports, data products, and services:

INTERNET ACCESS

All NASS reports are available free of charge on the worldwide Internet. For access, connect to the Internet and go to the NASS Home Page at: <http://www.usda.gov/nass/>. Select "Today's Reports" or Publications and then Reports by Calendar or Publications and then Search, by Title or Subject.

E-MAIL SUBSCRIPTION

There are two options for subscribing via e-mail. All NASS reports are available by subscription free of charge direct to your e-mail address. 1) Starting with the NASS Home Page at <http://www.usda.gov/nass/>, click on **Publications**, then click on the **Subscribe by E-mail** button which takes you to the page describing e-mail delivery of reports. Finally, click on **Go to the Subscription Page** and follow the instructions. 2) If you do NOT have Internet access, send an e-mail message to: usda-reports@usda.mannlib.cornell.edu. In the body of the message type the word: **list**.

AUTOFAX ACCESS

NASSFax service is available for some reports from your fax machine. Please call 202-720-2000, using the handset attached to your fax. Respond to the voice prompts. Document 0411 is a list of available reports.

PRINTED REPORTS OR DATA PRODUCTS

CALL OUR TOLL-FREE ORDER DESK: 800-999-6779 (U.S. and Canada)
Other areas, please call 703-834-0125 FAX: 703-834-0110
(Visa, MasterCard, check, or money order acceptable for payment.)

ASSISTANCE

For **assistance** with general agricultural statistics or further information about NASS or its products or services, contact the **Agricultural Statistics Hotline** at 800-727-9540, 7:30 a.m. to 4:00 p.m. ET, or e-mail: nass@nass.usda.gov.