



Cattle on Feed

Released July 21, 2000, by the National Agricultural Statistics Service (NASS), Agricultural Statistics Board, U.S. Department of Agriculture. For information on "Cattle on Feed" call Greg Thessen at (202) 720-3040, office hours 7:30 a.m. to 4:00 p.m. ET.

U.S. Cattle on Feed Up 9 Percent

Cattle and calves on feed for slaughter market in the United States for feedlots with capacity of 1,000 or more head totaled 10.39 million head on July 1, 2000. The inventory was 9 percent above July 1, 1999 and 13 percent above July 1, 1998. The inventory included 6.22 million steers and steer calves, up 8 percent from the previous year. This group accounted for 60 percent of the total inventory. Heifers and heifer calves accounted for 4.13 million head, up 9 percent from 1999.

Placements in feedlots during June totaled 1.66 million, 7 percent below 1999 but 6 percent above 1998. Net placements were 1.61 million. During June, placements of cattle and calves weighing less than 600 pounds were 347,000, 600-699 pounds were 380,000, 700-799 pounds were 498,000, and 800 pounds and greater were 439,000.

Marketings of fed cattle during June totaled 2.16 million, slightly above 1999 and 6 percent above 1998.

Other disappearance totaled 57,000 during June, 10 percent below 1999 and 21 percent below 1998.

Cattle on Feed in Historic 7 States Up 9 Percent

Cattle on feed July 1, 2000, in the historic 7 States for feedlots with capacity of 1,000 or more head totaled 8.96 million, up 9 percent from the previous year and 14 percent above July 1, 1998. The inventory included 5.33 million steers and steer calves, up 10 percent from the previous year. This group accounted for 59 percent of the total inventory. Heifers and heifer calves accounted for 3.60 million head, up 9 percent from 1999.

Placements in feedlots during June totaled 1.41 million, 7 percent below 1999 but 8 percent above 1998.

Marketings during June totaled 1.83 million, slightly below 1999 but 6 percent above 1998.

Other disappearance during June was 37,000 head, 16 percent below 1999 and down 27 percent from 1998.

U.S. All Cattle on Feed Up 7 Percent

Cattle on feed July 1, 2000, from all feedlots in the United States, totaled 12.3 million, up 7 percent from the 11.5 million on July 1, 1999 and 12 percent above July 1, 1998.

**Cattle on Feed: Number on Feed, Placements, Marketings, and
Other Disappearance, 1,000+ Capacity Feedlots,
United States, July 1, 1998-2000**

Item	Number			2000 as % of	
	1998	1999	2000	1998	1999
	<i>1,000 Head</i>	<i>1,000 Head</i>	<i>1,000 Head</i>	<i>Percent</i>	<i>Percent</i>
On Feed Jun 1 ¹	9,703	9,987	*10,937	113	110
Placed on Feed During Jun	1,564	1,794	1,664	106	93
Fed Cattle Marketed During Jun	2,034	2,153	2,155	106	100
Other Disappearance During Jun ²	72	63	57	79	90
On Feed Jul 1 ¹	9,161	9,565	10,389	113	109

* Revised.

¹ Cattle and calves on feed are animals for slaughter market being fed a ration of grain or other concentrates and are expected to produce a carcass that will grade select or better.

² Includes death loss, movement from feedlots to pasture, and shipments to other feedlots for further feeding.

**Cattle on Feed: Number on Feed, Placements, Marketings, and
Other Disappearance, 1,000+ Capacity Feedlots,
United States, June 1, 1998-2000**

Item	Number			2000 as % of	
	1998	1999	2000	1998	1999
	<i>1,000 Head</i>	<i>1,000 Head</i>	<i>1,000 Head</i>	<i>Percent</i>	<i>Percent</i>
On Feed May 1 ¹	9,724	10,032	10,914	112	109
Placed on Feed During May	2,033	2,049	*2,305	113	112
Fed Cattle Marketed During May	1,961	1,995	*2,167	111	109
Other Disappearance During May ²	93	99	115	124	116
On Feed Jun 1 ¹	9,703	9,987	*10,937	113	110

* Revised.

¹ Cattle and calves on feed are animals for slaughter market being fed a ration of grain or other concentrates and are expected to produce a carcass that will grade select or better.

² Includes death loss, movement from feedlots to pasture, and shipments to other feedlots for further feeding.

**Cattle on Feed: Number on Feed by Class, 1,000+ Capacity Feedlots,
United States, July 1, 1998-2000**

Item	Number			2000 as % of	
	1998	1999	2000	1998	1999
	<i>1,000 Head</i>	<i>1,000 Head</i>	<i>1,000 Head</i>	<i>Percent</i>	<i>Percent</i>
Class on Feed Jul 1					
Steers and Steer Calves	5,445	5,738	6,220	114	108
Heifers and Heifer Calves	3,679	3,783	4,127	112	109
Cows and Bulls	37	44	42	114	95

**Cattle on Feed: Number on Feed, Placements, Marketings, and
Other Disappearance, 1,000+ Capacity Feedlots,
7 States, July 1, 1998-2000¹**

Item	Number			2000 as % of	
	1998	1999	2000	1998	1999
	<i>1,000 Head</i>	<i>1,000 Head</i>	<i>1,000 Head</i>	<i>Percent</i>	<i>Percent</i>
On Feed Jun 1 ²	8,289	8,547	*9,411	114	110
Placed on Feed During Jun	1,314	1,515	1,413	108	93
Fed Cattle Marketed During Jun	1,727	1,835	1,828	106	100
Other Disappearance During Jun ³	51	44	37	73	84
On Feed Jul 1 ²	7,825	8,183	8,959	114	109

* Revised.

¹ The 7 States include AZ, CA, CO, IA, KS, NE, and TX.

² Cattle and calves on feed are animals for slaughter market being fed a ration of grain or other concentrates and are expected to produce a carcass that will grade select or better.

³ Includes death loss, movement from feedlots to pasture, and shipments to other feedlots for further feeding.

**Cattle on Feed: Number on Feed, Placements, Marketings, and
Other Disappearance, 1,000+ Capacity Feedlots,
7 States, June 1, 1998-2000¹**

Item	Number			2000 as % of	
	1998	1999	2000	1998	1999
	<i>1,000 Head</i>	<i>1,000 Head</i>	<i>1,000 Head</i>	<i>Percent</i>	<i>Percent</i>
On Feed May 1 ²	8,295	8,583	9,361	113	109
Placed on Feed During May	1,740	1,733	*1,998	115	115
Fed Cattle Marketed During May	1,681	1,696	*1,863	111	110
Other Disappearance During May ³	65	73	85	131	116
On Feed Jun 1 ²	8,289	8,547	*9,411	114	110

* Revised.

¹ The 7 States include AZ, CA, CO, IA, KS, NE, and TX.

² Cattle and calves on feed are animals for slaughter market being fed a ration of grain or other concentrates and are expected to produce a carcass that will grade select or better.

³ Includes death loss, movement from feedlots to pasture, and shipments to other feedlots for further feeding.

**Cattle on Feed: Number on Feed by Class, 1,000+ Capacity Feedlots,
7 States, July 1, 1998-2000¹**

Item	Number			2000 as % of	
	1998	1999	2000	1998	1999
	<i>1,000 Head</i>	<i>1,000 Head</i>	<i>1,000 Head</i>	<i>Percent</i>	<i>Percent</i>
Class on Feed Jul 1					
Steers and Steer Calves	4,608	4,849	5,326	116	110
Heifers and Heifer Calves	3,191	3,302	3,602	113	109
Cows and Bulls	26	32	31	119	97

¹ The 7 States include AZ, CA, CO, IA, KS, NE, and TX.

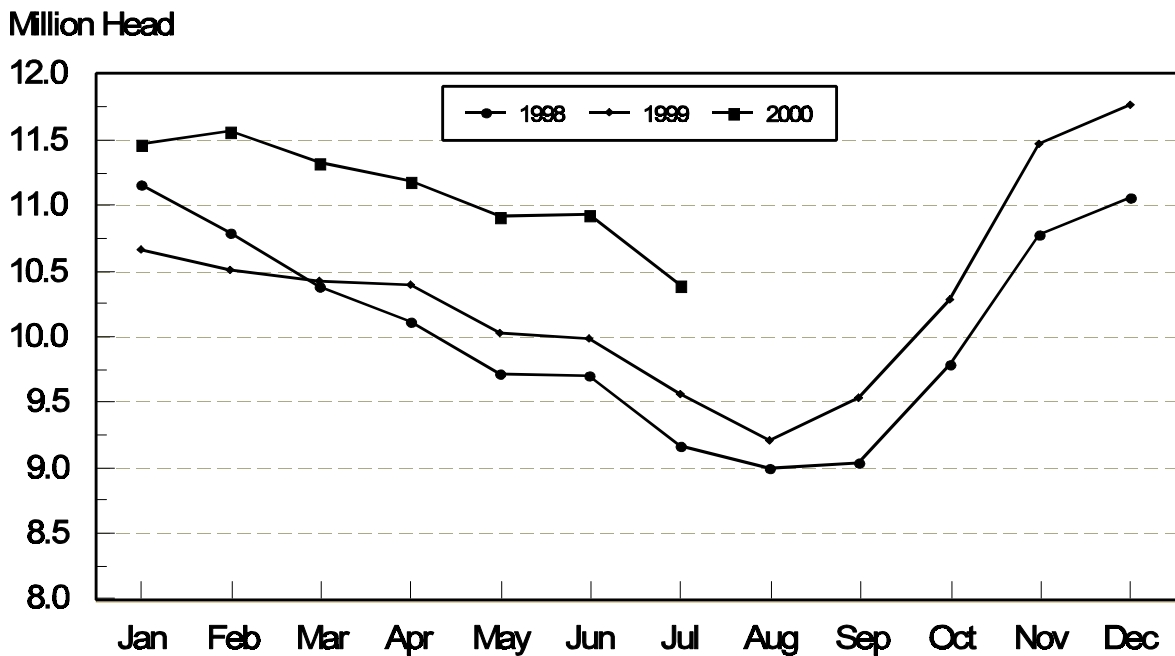
**Cattle on Feed: Number on Feed, 1,000+ Capacity Feedlots,
by Month, State, and United States 1999-2000 ¹**

State	Jul 1, 1999	Jun 1, 2000	Jul 1, 2000		
			Number	as % of 1999	as % of Jun
	<i>1,000 Head</i>	<i>1,000 Head</i>	<i>1,000 Head</i>	<i>Percent</i>	<i>Percent</i>
AZ	198	276	274	138	99
CA	375	410	410	109	100
CO	1,020	1,180	1,090	107	92
ID	275	305	290	105	95
IA	310	*355	345	111	97
KS	1,960	2,290	2,160	110	94
NE	1,790	2,100	1,950	109	93
NM	82	90	89	109	99
OK	325	375	355	109	95
SD	140	165	144	103	87
TX	2,530	2,800	2,730	108	98
WA	215	216	202	94	94
Oth Sts	345	375	350	101	93
US	9,565	*10,937	10,389	109	95

* Revised.

¹ Cattle and calves on feed are animals for slaughter market being fed a ration of grain or other concentrates and are expected to produce a carcass that will grade select or better.

**United States Cattle on Feed
1,000+ Capacity Feedlots**



**Cattle on Feed: Number Placed on Feed, 1,000+ Capacity Feedlots,
by Month, State, and United States 1999-2000**

State	During Jun 1999	During May 2000	During Jun 2000		
			Number	as % of 1999	as % of May
	<i>1,000 Head</i>	<i>1,000 Head</i>	<i>1,000 Head</i>	<i>Percent</i>	<i>Percent</i>
AZ	20	37	34	170	92
CA	60	65	58	97	89
CO	160	195	150	94	77
ID	61	60	60	98	100
IA	45	*41	46	102	112
KS	410	550	360	88	65
NE	300	390	315	105	81
NM	16	18	15	94	83
OK	73	103	62	85	60
SD	15	23	18	120	78
TX	520	720	450	87	63
WA	65	44	48	74	109
Oth Sts	49	59	48	98	81
US	1,794	*2,305	1,664	93	72

* Revised.

**Cattle on Feed: Number Placed on Feed by Weight Group, 1,000+ Capacity
Feedlots, by Month, State, and United States, 1999-2000**

State	During June									
	Under 600		600-699		700-799		800 Plus		Total	
	1999	2000	1999	2000	1999	2000	1999	2000	1999	2000
	<i>1,000 Head</i>	<i>1,000 Head</i>	<i>1,000 Head</i>	<i>1,000 Head</i>	<i>1,000 Head</i>	<i>1,000 Head</i>	<i>1,000 Head</i>	<i>1,000 Head</i>	<i>1,000 Head</i>	<i>1,000 Head</i>
CO	11	29	31	33	74	49	44	39	160	150
KS	70	60	75	80	170	110	95	110	410	360
NE	20	38	56	73	103	84	121	120	300	315
TX	109	115	156	130	172	155	83	50	520	450
Oth Sts	85	105	59	64	115	100	145	120	404	389
US	295	347	377	380	634	498	488	439	1,794	1,664
	During May									
	Under 600		600-699		700-799		800 Plus		Total	
	1999	2000	1999	2000	1999	2000	1999	2000	1999	2000
	<i>1,000 Head</i>	<i>1,000 Head</i>	<i>1,000 Head</i>	<i>1,000 Head</i>	<i>1,000 Head</i>	<i>1,000 Head</i>	<i>1,000 Head</i>	<i>1,000 Head</i>	<i>1,000 Head</i>	<i>1,000 Head</i>
CO	17	25	31	32	76	68	56	70	180	195
KS	40	65	90	110	190	205	160	170	480	550
NE	21	32	66	59	113	161	130	138	330	390
TX	112	140	174	200	223	240	111	140	620	720
Oth Sts	100	120	69	*70	120	120	150	140	439	*450
US	290	382	430	*471	722	794	607	658	2,049	*2,305

* Revised.

**Cattle on Feed: Number Marketed, 1,000+ Capacity Feedlots,
by Month, State, and United States 1999-2000**

State	During Jun 1999	During May 2000	During Jun 2000		
			Number	as % of 1999	as % of May
	<i>1,000 Head</i>	<i>1,000 Head</i>	<i>1,000 Head</i>	<i>Percent</i>	<i>Percent</i>
AZ	26	32	35	135	109
CA	50	52	53	106	102
CO	225	180	230	102	128
ID	62	58	65	105	112
IA	64	*54	55	86	102
KS	460	470	485	105	103
NE	500	510	460	92	90
NM	19	16	16	84	100
OK	76	86	78	103	91
SD	36	31	37	103	119
TX	510	565	510	100	90
WA	48	46	61	127	133
Oth Sts	77	67	70	91	104
US	2,153	*2,167	2,155	100	99

* Revised.

**Cattle on Feed: Other Disappearance, 1,000+ Capacity Feedlots,
by Month, State, and United States 1999-2000 ¹**

State	During Jun 1999	During May 2000	During Jun 2000		
			Number	as % of 1999	as % of May
	<i>1,000 Head</i>	<i>1,000 Head</i>	<i>1,000 Head</i>	<i>Percent</i>	<i>Percent</i>
AZ	3	5	1	33	20
CA	5	8	5	100	63
CO	5	15	10	200	67
ID	9	12	10	111	83
IA	1	2	1	100	50
KS	10	20	5	50	25
NE	10	20	5	50	25
NM	2	2	0	0	0
OK	2	2	4	200	200
SD	3	7	2	67	29
TX	10	15	10	100	67
WA	1	0	1	100	0
Oth Sts	2	7	3	150	43
US	63	115	57	90	50

¹ Includes death loss, movement from feedlots to pasture, and shipments to other feedlots for further feeding.

**Cattle on Feed: Number on Feed by Class, 1,000+ Capacity Feedlots,
by Quarter, State, and United States, 1999-2000**

State	Steers & Steer Calves			Heifers & Heifer Calves			Cows and Bulls		
	Jul 1, 1999	Apr 1, 2000	Jul 1, 2000	Jul 1, 1999	Apr 1, 2000	Jul 1, 2000	Jul 1, 1999	Apr 1, 2000	Jul 1, 2000
	<i>1,000 Head</i>	<i>1,000 Head</i>	<i>1,000 Head</i>	<i>1,000 Head</i>	<i>1,000 Head</i>	<i>1,000 Head</i>	<i>1,000 Head</i>	<i>1,000 Head</i>	<i>1,000 Head</i>
AZ	182	260	261	16	13	13	0	0	0
CA	345	369	365	30	35	45	0	1	0
CO	540	680	620	475	485	465	5	5	5
ID	194	214	199	79	101	91	2	5	0
IA	187	237	210	122	138	135	1	0	0
KS	1,200	1,340	1,220	750	930	940	10	10	0
NE	1,035	1,370	1,120	740	920	805	15	20	25
NM	33	47	40	49	46	49	0	0	0
OK	200	240	205	124	140	149	1	0	1
SD	85	113	81	52	82	58	3	5	5
TX	1,360	1,480	1,530	1,169	1,279	1,199	1	1	1
WA	132	*138	129	82	*73	72	1	0	1
Oth Sts	245	290	240	95	105	106	5	10	4
US	5,738	*6,778	6,220	3,783	*4,347	4,127	44	57	42

* Revised.

**Cattle on Feed: Total Number on Feed, United States,
July 1, 1998-2000 ¹**

State	Jul 1, 1998	Jul 1, 1999	July 1, 2000		
			Number	as % of 1998	as % of 1999
	<i>1,000 Head</i>	<i>1,000 Head</i>	<i>1,000 Head</i>	<i>Percent</i>	<i>Percent</i>
US	11,000	11,500	12,300	112	107

¹ Cattle and calves on feed are animals for slaughter market being fed a ration of grain or other concentrates and are expected to produce a carcass that will grade select or better.

Terms and Definitions of Cattle on Feed Estimates

Cattle on feed are animals being fed a ration of grain, silage, hay and/or protein supplement for slaughter market that are expected to produce a carcass that will grade select or better. It excludes cattle being "backgrounded only" for later sale as feeders or later placement in another feedlot.

Placements are cattle put into a feedlot, fed a ration which will produce a carcass that will grade select or better, and are intended for the slaughter market.

Marketings are cattle shipped out of feedlots to a slaughter market.

Other disappearance includes death loss, movement from feedlots to pasture, and shipments to other feedlots for further feeding.

Reliability of Cattle on Feed Estimates

Survey Procedures: During January and July all known feedlots in the U.S. with capacity of 1,000 or more head are surveyed to provide data for cattle on feed estimates. During the other months, all known feedlots from 17 States are surveyed. The 17 States account for 98 percent of the cattle on feed in feedlots with capacity of 1,000 or more head.

Estimating Procedures: These cattle on feed estimates were prepared by the Agricultural Statistics Board after reviewing recommendations and analysis submitted by each State office. Regional and State survey data were reviewed for reasonableness with each other and with estimates from the previous month when setting the current estimates.

Revision Policy: Revisions to previous estimates are made to improve month to month relationships. Estimates for the previous month are subject to revision in all States each month when current estimates are made. In February, all monthly estimates for the previous year, and the number of feedlots and annual marketings from two years ago are reviewed and subject to revisions. The reviews are primarily based on slaughter data, state check-off or brand data, and any other data that may have been received after the original estimate was made. Estimates will also be reviewed after data from the Census of Agriculture are available. No revisions will be made after that date and estimates become final.

Reliability: Since all 1000+ capacity cattle on feed operators in every State are not included in the monthly survey, survey estimates are subject to sampling variability. Survey results are also subject to non-sampling errors such as omissions, duplications, and mistakes in reporting, recording, and processing the data. The effects of these errors cannot be measured directly. They are minimized through rigid quality controls in the data collection process and through a careful review of all reported data for consistency and reasonableness.

The next "Cattle on Feed" report will be released at 3 p.m. ET on August 18, 2000.

The United States Department of Agriculture (USDA) prohibits discrimination in all its programs on the basis of race, color, national origin, gender, religion, age, disability, political beliefs, sexual orientation, and marital or family status. (Not all prohibited bases apply to all programs.) Persons with disabilities who require alternative means for communication of program information (braille, large print, audiotape, etc.) should contact the USDA's TARGET Center at 202-720-2600 (voice and TDD).

To file a complaint of discrimination, write USDA, Director, Office of Civil Rights, Room 326-W, Whitten Building, 14th and Independence Avenue, SW, Washington, D.C., 20250-9410, or call 202-720-5964 (voice or TDD). USDA is an equal opportunity provider and employer.

ACCESS TO REPORTS!!

For your convenience, there are several ways to obtain NASS reports, data products, and services:

INTERNET ACCESS

All NASS reports are available free of charge on the worldwide Internet. For access, connect to the Internet and go to the NASS Home Page at: <http://www.usda.gov/nass/>. Select "Today's Reports" or Publications and then Reports by Calendar or Publications and then Search, by Title or Subject.

E-MAIL SUBSCRIPTION

There are two options for subscribing via e-mail. All NASS reports are available by subscription free of charge direct to your e-mail address. 1) Starting with the NASS Home Page at <http://www.usda.gov/nass/>, click on **Publications**, then click on the **Subscribe by E-mail** button which takes you to the page describing e-mail delivery of reports. Finally, click on **Go to the Subscription Page** and follow the instructions. 2) If you do NOT have Internet access, send an e-mail message to: usda-reports@usda.mannlib.cornell.edu. In the body of the message type the word: **list**.

AUTOFAX ACCESS

NASSFax service is available for some reports from your fax machine. Please call 202-720-2000, using the handset attached to your fax. Respond to the voice prompts. Document 0411 is a list of available reports.

PRINTED REPORTS OR DATA PRODUCTS

CALL OUR TOLL-FREE ORDER DESK: 800-999-6779 (U.S. and Canada)
Other areas, please call 703-834-0125 FAX: 703-834-0110
(Visa, MasterCard, check, or money order acceptable for payment.)

ASSISTANCE

For **assistance** with general agricultural statistics or further information about NASS or its products or services, contact the **Agricultural Statistics Hotline** at 800-727-9540, 7:30 a.m. to 4:00 p.m. ET, or e-mail: nass@nass.usda.gov.