



# Cattle on Feed

---

Released August 18, 2000, by the National Agricultural Statistics Service (NASS), Agricultural Statistics Board, U.S. Department of Agriculture. For information on "Cattle on Feed" call Greg Thessen at (202) 720-3040, office hours 7:30 a.m. to 4:00 p.m. ET.

## U.S. Cattle on Feed Up 11 Percent

**Cattle and calves on feed** for slaughter market in the United States for feedlots with capacity of 1,000 or more head totaled 10.18 million head on August 1, 2000. The inventory was 11 percent above August 1, 1999 and 13 percent above August 1, 1998.

**Placements** in feedlots during July totaled 1.92 million, 6 percent above 1999 but 1 percent below 1998. Net placements were 1.87 million. During July, placements of cattle and calves weighing less than 600 pounds were 424,000, 600-699 pounds were 366,000, 700-799 pounds were 597,000, and 800 pounds and greater were 530,000.

**Marketings** of fed cattle during July totaled 2.08 million, 2 percent below 1999 but 1 percent above 1998. July 2000 had one less slaughter day than July 1999, which limited slaughter and affected the year-to-year relationship for marketings.

**Other disappearance** totaled 44,000 during July, 15 percent below 1999 and 12 percent below 1998.

## Cattle on Feed in Historic 7 States Up 12 Percent

**Cattle on feed** August 1, 2000, in the historic 7 States for feedlots with capacity of 1,000 or more head totaled 8.81 million, up 12 percent from the previous year and 14 percent above August 1, 1998.

**Placements** in feedlots during July totaled 1.67 million, 7 percent above 1999 but slightly below 1998.

**Marketings** during July totaled 1.78 million, 2 percent below 1999 but 2 percent above 1998. July 2000 had one less slaughter day than July 1999, which limited slaughter and affected the year-to-year relationship for marketings.

**Other disappearance** during July was 37,000 head, 14 percent below 1999 and 10 percent below 1998.

**Cattle on Feed: Number on Feed, Placements, Marketings, and  
Other Disappearance, 1,000+ Capacity Feedlots,  
United States, August 1, 1998-2000**

Item	Number			2000 as % of	
	1998	1999	2000	1998	1999
	<i>1,000 Head</i>	<i>1,000 Head</i>	<i>1,000 Head</i>	<i>Percent</i>	<i>Percent</i>
On Feed Jul 1 <sup>1</sup>	9,161	9,565	10,389	113	109
Placed on Feed During Jul	1,937	1,812	1,917	99	106
Fed Cattle Marketed During Jul	2,052	2,116	2,082	101	98
Other Disappearance During Jul <sup>2</sup>	50	52	44	88	85
On Feed Aug 1 <sup>1</sup>	8,996	9,209	10,180	113	111

<sup>1</sup> Cattle and calves on feed are animals for slaughter market being fed a ration of grain or other concentrates and are expected to produce a carcass that will grade select or better.

<sup>2</sup> Includes death loss, movement from feedlots to pasture, and shipments to other feedlots for further feeding.

**Cattle on Feed: Number on Feed, Placements, Marketings, and  
Other Disappearance, 1,000+ Capacity Feedlots,  
United States, July 1, 1998-2000**

Item	Number			2000 as % of	
	1998	1999	2000	1998	1999
	<i>1,000 Head</i>	<i>1,000 Head</i>	<i>1,000 Head</i>	<i>Percent</i>	<i>Percent</i>
On Feed Jun 1 <sup>1</sup>	9,703	9,987	10,937	113	110
Placed on Feed During Jun	1,564	1,794	1,664	106	93
Fed Cattle Marketed During Jun	2,034	2,153	2,155	106	100
Other Disappearance During Jun <sup>2</sup>	72	63	57	79	90
On Feed Jul 1 <sup>1</sup>	9,161	9,565	10,389	113	109

<sup>1</sup> Cattle and calves on feed are animals for slaughter market being fed a ration of grain or other concentrates and are expected to produce a carcass that will grade select or better.

<sup>2</sup> Includes death loss, movement from feedlots to pasture, and shipments to other feedlots for further feeding.

**Cattle on Feed: Number on Feed, Placements, Marketings, and  
Other Disappearance, 1,000+ Capacity Feedlots,  
7 States, August 1, 1998-2000<sup>1</sup>**

Item	Number			2000 as % of	
	1998	1999	2000	1998	1999
	<i>1,000 Head</i>	<i>1,000 Head</i>	<i>1,000 Head</i>	<i>Percent</i>	<i>Percent</i>
On Feed Jul 1 <sup>2</sup>	7,825	8,183	8,959	114	109
Placed on Feed During Jul	1,677	1,565	1,674	100	107
Fed Cattle Marketed During Jul	1,755	1,816	1,784	102	98
Other Disappearance During Jul <sup>3</sup>	41	43	37	90	86
On Feed Aug 1 <sup>2</sup>	7,706	7,889	8,812	114	112

<sup>1</sup> The 7 States include AZ, CA, CO, IA, KS, NE, and TX.

<sup>2</sup> Cattle and calves on feed are animals for slaughter market being fed a ration of grain or other concentrates and are expected to produce a carcass that will grade select or better.

<sup>3</sup> Includes death loss, movement from feedlots to pasture, and shipments to other feedlots for further feeding.

**Cattle on Feed: Number on Feed, Placements, Marketings, and  
Other Disappearance, 1,000+ Capacity Feedlots,  
7 States, July 1, 1998-2000<sup>1</sup>**

Item	Number			2000 as % of	
	1998	1999	2000	1998	1999
	<i>1,000 Head</i>	<i>1,000 Head</i>	<i>1,000 Head</i>	<i>Percent</i>	<i>Percent</i>
On Feed Jun 1 <sup>2</sup>	8,289	8,547	9,411	114	110
Placed on Feed During Jun	1,314	1,515	1,413	108	93
Fed Cattle Marketed During Jun	1,727	1,835	1,828	106	100
Other Disappearance During Jun <sup>3</sup>	51	44	37	73	84
On Feed Jul 1 <sup>2</sup>	7,825	8,183	8,959	114	109

<sup>1</sup> The 7 States include AZ, CA, CO, IA, KS, NE, and TX.

<sup>2</sup> Cattle and calves on feed are animals for slaughter market being fed a ration of grain or other concentrates and are expected to produce a carcass that will grade select or better.

<sup>3</sup> Includes death loss, movement from feedlots to pasture, and shipments to other feedlots for further feeding.

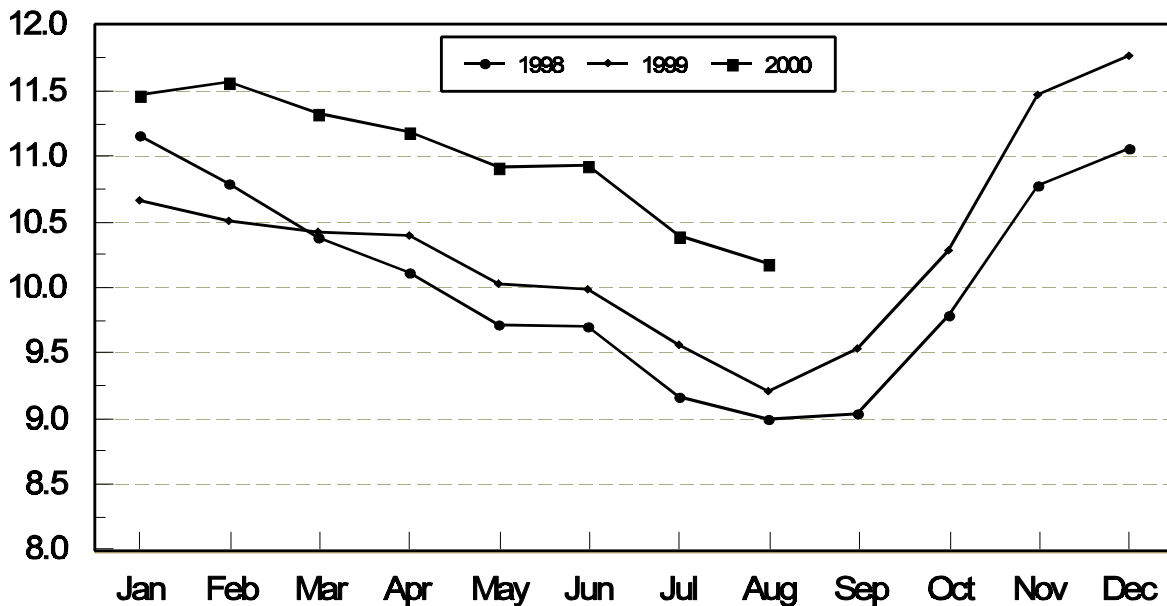
**Cattle on Feed: Number on Feed, 1,000+ Capacity Feedlots,  
by Month, State, and United States 1999-2000 <sup>1</sup>**

State	Aug 1, 1999	Jul 1, 2000	Aug 1, 2000		
			Number	as % of 1999	as % of Jul
	<i>1,000 Head</i>	<i>1,000 Head</i>	<i>1,000 Head</i>	<i>Percent</i>	<i>Percent</i>
AZ	194	274	262	135	96
CA	375	410	420	112	102
CO	960	1,090	1,050	109	96
ID	265	290	280	106	97
IA	290	345	330	114	96
KS	1,990	2,160	2,190	110	101
NE	1,600	1,950	1,840	115	94
NM	83	89	93	112	104
OK	325	355	355	109	100
SD	125	144	126	101	88
TX	2,480	2,730	2,720	110	100
WA	202	202	194	96	96
Oth Sts	320	350	320	100	91
US	9,209	10,389	10,180	111	98

<sup>1</sup> Cattle and calves on feed are animals for slaughter market being fed a ration of grain or other concentrates and are expected to produce a carcass that will grade select or better.

**United States Cattle on Feed  
1,000+ Capacity Feedlots**

Million Head



**Cattle on Feed: Number Placed on Feed, 1,000+ Capacity Feedlots,  
by Month, State, and United States 1999-2000**

State	During Jul 1999	During Jun 2000	During Jul 2000		
			Number	as % of 1999	as % of Jun
	<i>1,000 Head</i>	<i>1,000 Head</i>	<i>1,000 Head</i>	<i>Percent</i>	<i>Percent</i>
AZ	23	34	24	104	71
CA	55	58	60	109	103
CO	175	150	185	106	123
ID	48	60	56	117	93
IA	32	46	40	125	87
KS	500	360	520	104	144
NE	300	315	325	108	103
NM	16	15	19	119	127
OK	73	62	63	86	102
SD	14	18	16	114	89
TX	480	450	520	108	116
WA	45	48	49	109	102
Oth Sts	51	48	40	78	83
US	1,812	1,664	1,917	106	115

**Cattle on Feed: Number Placed on Feed by Weight Group, 1,000+ Capacity  
Feedlots, by Month, State, and United States, 1999-2000**

State	During July									
	Under 600		600-699		700-799		800 Plus		Total	
	1999	2000	1999	2000	1999	2000	1999	2000	1999	2000
	<i>1,000 Head</i>	<i>1,000 Head</i>	<i>1,000 Head</i>	<i>1,000 Head</i>	<i>1,000 Head</i>	<i>1,000 Head</i>	<i>1,000 Head</i>	<i>1,000 Head</i>	<i>1,000 Head</i>	<i>1,000 Head</i>
CO	28	23	27	30	49	72	71	60	175	185
KS	60	90	115	110	195	200	130	120	500	520
NE	40	41	62	54	88	110	110	120	300	325
TX	120	170	149	115	141	135	70	100	480	520
Oth Sts	85	100	47	57	105	80	120	130	357	367
US	333	424	400	366	578	597	501	530	1,812	1,917
State	During June									
	Under 600		600-699		700-799		800 Plus		Total	
	1999	2000	1999	2000	1999	2000	1999	2000	1999	2000
	<i>1,000 Head</i>	<i>1,000 Head</i>	<i>1,000 Head</i>	<i>1,000 Head</i>	<i>1,000 Head</i>	<i>1,000 Head</i>	<i>1,000 Head</i>	<i>1,000 Head</i>	<i>1,000 Head</i>	<i>1,000 Head</i>
CO	11	29	31	33	74	49	44	39	160	150
KS	70	60	75	80	170	110	95	110	410	360
NE	20	38	56	73	103	84	121	120	300	315
TX	109	115	156	130	172	155	83	50	520	450
Oth Sts	85	105	59	64	115	100	145	120	404	389
US	295	347	377	380	634	498	488	439	1,794	1,664

**Cattle on Feed: Number Marketed, 1,000+ Capacity Feedlots,  
by Month, State, and United States 1999-2000**

State	During Jul 1999	During Jun 2000	During Jul 2000		
			Number	as % of 1999	as % of Jun
	<i>1,000 Head</i>	<i>1,000 Head</i>	<i>1,000 Head</i>	<i>Percent</i>	<i>Percent</i>
AZ	26	35	35	135	100
CA	50	53	45	90	85
CO	230	230	220	96	96
ID	56	65	65	116	100
IA	50	55	54	108	98
KS	460	485	480	104	99
NE	480	460	430	90	93
NM	14	16	12	86	75
OK	71	78	62	87	79
SD	27	37	33	122	89
TX	520	510	520	100	102
WA	57	61	57	100	93
Oth Sts	75	70	69	92	99
US	2,116	2,155	2,082	98	97

**Cattle on Feed: Other Disappearance, 1,000+ Capacity Feedlots,  
by Month, State, and United States 1999-2000 <sup>1</sup>**

State	During Jul 1999	During Jun 2000	During Jul 2000		
			Number	as % of 1999	as % of Jun
	<i>1,000 Head</i>	<i>1,000 Head</i>	<i>1,000 Head</i>	<i>Percent</i>	<i>Percent</i>
AZ	1	1	1	100	100
CA	5	5	5	100	100
CO	5	10	5	100	50
ID	2	10	1	50	10
IA	2	1	1	50	100
KS	10	5	10	100	200
NE	10	5	5	50	100
NM	1	0	3	300	
OK	2	4	1	50	25
SD	2	2	1	50	50
TX	10	10	10	100	100
WA	1	1	0		
Oth Sts	1	3	1	100	33
US	52	57	44	85	77

<sup>1</sup> Includes death loss, movement from feedlots to pasture, and shipments to other feedlots for further feeding.

## Terms and Definitions of Cattle on Feed Estimates

**Cattle on feed** are animals being fed a ration of grain, silage, hay and/or protein supplement for slaughter market that are expected to produce a carcass that will grade select or better. It excludes cattle being "backgrounded only" for later sale as feeders or later placement in another feedlot.

**Placements** are cattle put into a feedlot, fed a ration which will produce a carcass that will grade select or better, and are intended for the slaughter market.

**Marketings** are cattle shipped out of feedlots to a slaughter market.

**Other disappearance** includes death loss, movement from feedlots to pasture, and shipments to other feedlots for further feeding.

## Reliability of Cattle on Feed Estimates

**Survey Procedures:** During January and July all known feedlots in the U.S. with capacity of 1,000 or more head are surveyed to provide data for cattle on feed estimates. During the other months, all known feedlots from 17 States are surveyed. The 17 States account for 98 percent of the cattle on feed in feedlots with capacity of 1,000 or more head.

**Estimating Procedures:** These cattle on feed estimates were prepared by the Agricultural Statistics Board after reviewing recommendations and analysis submitted by each State office. Regional and State survey data were reviewed for reasonableness with each other and with estimates from the previous month when setting the current estimates.

**Revision Policy:** Revisions to previous estimates are made to improve month to month relationships. Estimates for the previous month are subject to revision in all States each month when current estimates are made. In February, all monthly estimates for the previous year, and the number of feedlots and annual marketings from two years ago are reviewed and subject to revisions. The reviews are primarily based on slaughter data, state check-off or brand data, and any other data that may have been received after the original estimate was made. Estimates will also be reviewed after data from the Census of Agriculture are available. No revisions will be made after that date and estimates become final.

**Reliability:** Since all 1000+ capacity cattle on feed operators in every State are not included in the monthly survey, survey estimates are subject to sampling variability. Survey results are also subject to non-sampling errors such as omissions, duplications, and mistakes in reporting, recording, and processing the data. The effects of these errors cannot be measured directly. They are minimized through rigid quality controls in the data collection process and through a careful review of all reported data for consistency and reasonableness.

The next "Cattle on Feed" report will be released at 3 p.m. on September 15, 2000.

The United States Department of Agriculture (USDA) prohibits discrimination in all its programs on the basis of race, color, national origin, gender, religion, age, disability, political beliefs, sexual orientation, and marital or family status. (Not all prohibited bases apply to all programs.) Persons with disabilities who require alternative means for communication of program information (braille, large print, audiotape, etc.) should contact the USDA's TARGET Center at 202-720-2600 (voice and TDD).

To file a complaint of discrimination, write USDA, Director, Office of Civil Rights, Room 326-W, Whitten Building, 14th and Independence Avenue, SW, Washington, D.C., 20250-9410, or call 202-720-5964 (voice or TDD). USDA is an equal opportunity provider and employer.

## ACCESS TO REPORTS!!

---

For your convenience, there are several ways to obtain NASS reports, data products, and services:

### INTERNET ACCESS

All NASS reports are available free of charge on the worldwide Internet. For access, connect to the Internet and go to the NASS Home Page at: <http://www.usda.gov/nass/>. Select "Today's Reports" or Publications and then Reports by Calendar or Publications and then Search, by Title or Subject.

### E-MAIL SUBSCRIPTION

There are two options for subscribing via e-mail. All NASS reports are available by subscription free of charge direct to your e-mail address. 1) Starting with the NASS Home Page at <http://www.usda.gov/nass/>, click on **Publications**, then click on the **Subscribe by E-mail** button which takes you to the page describing e-mail delivery of reports. Finally, click on **Go to the Subscription Page** and follow the instructions. 2) If you do NOT have Internet access, send an e-mail message to: [usda-reports@usda.mannlib.cornell.edu](mailto:usda-reports@usda.mannlib.cornell.edu). In the body of the message type the word: **list**.

### AUTOFAX ACCESS

NASSFax service is available for some reports from your fax machine. Please call 202-720-2000, using the handset attached to your fax. Respond to the voice prompts. Document 0411 is a list of available reports.

-----

### PRINTED REPORTS OR DATA PRODUCTS

CALL OUR TOLL-FREE ORDER DESK: 800-999-6779 (U.S. and Canada)  
Other areas, please call 703-834-0125 FAX: 703-834-0110  
(Visa, MasterCard, check, or money order acceptable for payment.)

-----

### ASSISTANCE

For **assistance** with general agricultural statistics or further information about NASS or its products or services, contact the **Agricultural Statistics Hotline** at **800-727-9540**, 7:30 a.m. to 4:00 p.m. ET, or e-mail: [nass@nass.usda.gov](mailto:nass@nass.usda.gov).



USDA to Hold Public Forum  
October 16, 2000

Holiday Inn Mart Plaza  
Chicago, Illinois

The National Agricultural Statistics Service will be organizing an open forum for Data Users. The purpose will be to provide updates on pending changes in the various statistical and information programs, and to seek comments and input from data users. The other USDA agencies to be represented will include the Agricultural Marketing Service, the Economic Research Service, the Foreign Agricultural Service, and the World Agricultural Outlook Board. The Foreign Trade Division from the Census Bureau and The National Weather Service will also be included in the meeting.

For registration details, see the NASS home page at <http://www.usda.gov/nass/> or contact Karlyn McCutcheon (NASS) at (202) 690-8141 or at [hq\\_dapp@nass.usda.gov](mailto:hq_dapp@nass.usda.gov)