



Cattle on Feed

Released September 15, 2000, by the National Agricultural Statistics Service (NASS), Agricultural Statistics Board, U.S. Department of Agriculture. For information on "Cattle on Feed" call Greg Thessen at (202) 720-3040, office hours 7:30 a.m. to 4:00 p.m. ET.

U.S. Cattle on Feed Up 9 Percent

Cattle and calves on feed for slaughter market in the United States for feedlots with capacity of 1,000 or more head totaled 10.38 million head on September 1, 2000. The inventory was 9 percent above September 1, 1999 and 15 percent above September 1, 1998.

Placements in feedlots during August totaled 2.44 million, slightly above 1999 and 18 percent above 1998. Net placements were 2.39 million. During August, placements of cattle and calves weighing less than 600 pounds were 573,000, 600-699 pounds were 504,000, 700-799 pounds were 691,000, and 800 pounds and greater were 672,000.

Marketings of fed cattle during August totaled 2.19 million, 7 percent above 1999 and 11 percent above 1998.

Other disappearance totaled 49,000 during August, 11 percent below 1999 and 6 percent below 1998.

Cattle on Feed in Historic 7 States Up 10 Percent

Cattle on feed September 1, 2000, in the historic 7 States for feedlots with capacity of 1,000 or more head totaled 8.98 million, up 10 percent from the previous year and 16 percent above September 1, 1998.

Placements in feedlots during August totaled 2.09 million, slightly above 1999 and 18 percent above 1998.

Marketings during August totaled 1.89 million, 8 percent above 1999 and 12 percent above 1998.

Other disappearance during August was 36,000 head, 14 percent below 1999 and 1998.

**Cattle on Feed: Number on Feed, Placements, Marketings, and
Other Disappearance, 1,000+ Capacity Feedlots,
United States, September 1, 1998-2000**

Item	Number			2000 as % of	
	1998	1999	2000	1998	1999
	<i>1,000 Head</i>	<i>1,000 Head</i>	<i>1,000 Head</i>	<i>Percent</i>	<i>Percent</i>
On Feed Aug 1 ¹	8,996	9,209	10,180	113	111
Placed on Feed During Aug	2,063	2,428	2,440	118	100
Fed Cattle Marketed During Aug	1,962	2,046	2,187	111	107
Other Disappearance During Aug ²	52	55	49	94	89
On Feed Sep 1 ¹	9,045	9,536	10,384	115	109

¹ Cattle and calves on feed are animals for slaughter market being fed a ration of grain or other concentrates and are expected to produce a carcass that will grade select or better.

² Includes death loss, movement from feedlots to pasture, and shipments to other feedlots for further feeding.

**Cattle on Feed: Number on Feed, Placements, Marketings, and
Other Disappearance, 1,000+ Capacity Feedlots,
United States, August 1, 1998-2000**

Item	Number			2000 as % of	
	1998	1999	2000	1998	1999
	<i>1,000 Head</i>	<i>1,000 Head</i>	<i>1,000 Head</i>	<i>Percent</i>	<i>Percent</i>
On Feed Jul 1 ¹	9,161	9,565	10,389	113	109
Placed on Feed During Jul	1,937	1,812	1,917	99	106
Fed Cattle Marketed During Jul	2,052	2,116	2,082	101	98
Other Disappearance During Jul ²	50	52	44	88	85
On Feed Aug 1 ¹	8,996	9,209	10,180	113	111

¹ Cattle and calves on feed are animals for slaughter market being fed a ration of grain or other concentrates and are expected to produce a carcass that will grade select or better.

² Includes death loss, movement from feedlots to pasture, and shipments to other feedlots for further feeding.

**Cattle on Feed: Number on Feed, Placements, Marketings, and
Other Disappearance, 1,000+ Capacity Feedlots,
7 States, September 1, 1998-2000 ¹**

Item	Number			2000 as % of	
	1998	1999	2000	1998	1999
	<i>1,000 Head</i>	<i>1,000 Head</i>	<i>1,000 Head</i>	<i>Percent</i>	<i>Percent</i>
On Feed Aug 1 ²	7,706	7,889	8,812	114	112
Placed on Feed During Aug	1,773	2,085	2,091	118	100
Fed Cattle Marketed During Aug	1,687	1,747	1,885	112	108
Other Disappearance During Aug ³	42	42	36	86	86
On Feed Sep 1 ²	7,750	8,185	8,982	116	110

¹ The 7 States include AZ, CA, CO, IA, KS, NE, and TX.

² Cattle and calves on feed are animals for slaughter market being fed a ration of grain or other concentrates and are expected to produce a carcass that will grade select or better.

³ Includes death loss, movement from feedlots to pasture, and shipments to other feedlots for further feeding.

**Cattle on Feed: Number on Feed, Placements, Marketings, and
Other Disappearance, 1,000+ Capacity Feedlots,
7 States, August 1, 1998-2000 ¹**

Item	Number			2000 as % of	
	1998	1999	2000	1998	1999
	<i>1,000 Head</i>	<i>1,000 Head</i>	<i>1,000 Head</i>	<i>Percent</i>	<i>Percent</i>
On Feed Jul 1 ²	7,825	8,183	8,959	114	109
Placed on Feed During Jul	1,677	1,565	1,674	100	107
Fed Cattle Marketed During Jul	1,755	1,816	1,784	102	98
Other Disappearance During Jul ³	41	43	37	90	86
On Feed Aug 1 ²	7,706	7,889	8,812	114	112

¹ The 7 States include AZ, CA, CO, IA, KS, NE, and TX.

² Cattle and calves on feed are animals for slaughter market being fed a ration of grain or other concentrates and are expected to produce a carcass that will grade select or better.

³ Includes death loss, movement from feedlots to pasture, and shipments to other feedlots for further feeding.

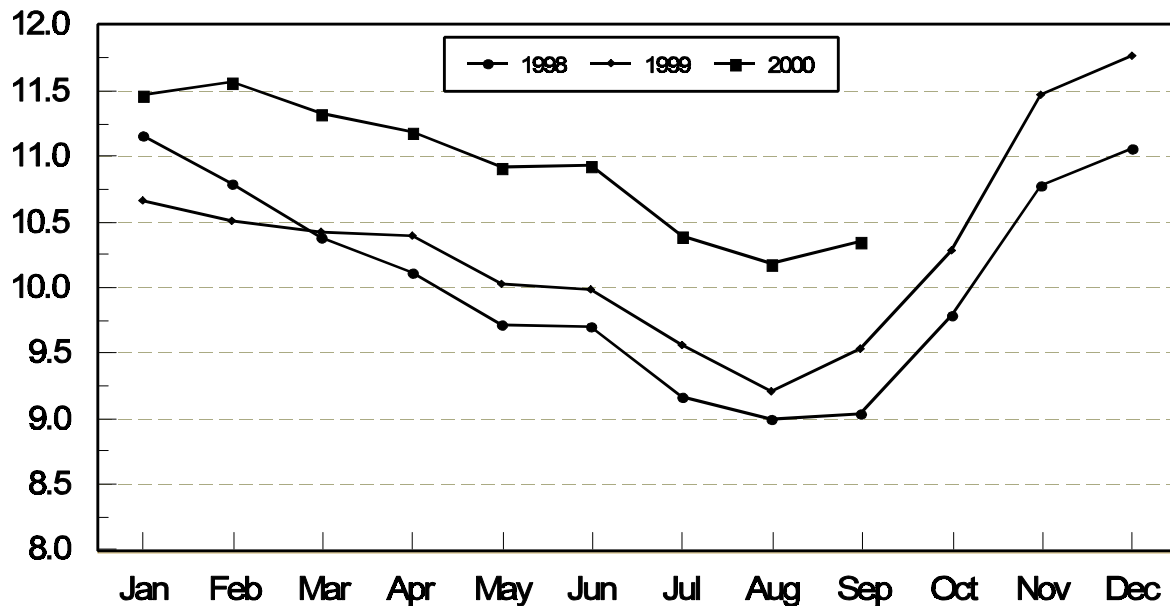
**Cattle on Feed: Number on Feed, 1,000+ Capacity Feedlots,
by Month, State, and United States 1999-2000 ¹**

State	Sep 1, 1999	Aug 1, 2000	Sep 1, 2000		
			Number	as % of 1999	as % of Aug
	<i>1,000 Head</i>	<i>1,000 Head</i>	<i>1,000 Head</i>	<i>Percent</i>	<i>Percent</i>
AZ	200	262	257	129	98
CA	375	420	415	111	99
CO	960	1,050	1,080	113	103
ID	285	280	290	102	104
IA	300	330	330	110	100
KS	2,090	2,190	2,220	106	101
NE	1,700	1,840	1,920	113	104
NM	81	93	90	111	97
OK	350	355	375	107	106
SD	110	126	128	116	102
TX	2,560	2,720	2,760	108	101
WA	215	194	204	95	105
Oth Sts	310	320	315	102	98
US	9,536	10,180	10,384	109	102

¹ Cattle and calves on feed are animals for slaughter market being fed a ration of grain or other concentrates and are expected to produce a carcass that will grade select or better.

**United States Cattle on Feed
1,000+ Capacity Feedlots**

Million Head



**Cattle on Feed: Number Placed on Feed, 1,000+ Capacity Feedlots,
by Month, State, and United States 1999-2000**

State	During Aug 1999	During Jul 2000	During Aug 2000		
			Number	as % of 1999	as % of Jul
	<i>1,000 Head</i>	<i>1,000 Head</i>	<i>1,000 Head</i>	<i>Percent</i>	<i>Percent</i>
AZ	29	24	29	100	121
CA	60	60	56	93	93
CO	255	185	300	118	162
ID	79	56	73	92	130
IA	56	40	51	91	128
KS	575	520	530	92	102
NE	500	325	495	99	152
NM	14	19	18	129	95
OK	98	63	98	100	156
SD	21	16	35	167	219
TX	610	520	630	103	121
WA	66	49	58	88	118
Oth Sts	65	40	67	103	168
US	2,428	1,917	2,440	100	127

**Cattle on Feed: Number Placed on Feed by Weight Group, 1,000+ Capacity
Feedlots, by Month, State, and United States, 1999-2000**

State	During August									
	Under 600		600-699		700-799		800 Plus		Total	
	1999	2000	1999	2000	1999	2000	1999	2000	1999	2000
	<i>1,000 Head</i>	<i>1,000 Head</i>	<i>1,000 Head</i>	<i>1,000 Head</i>	<i>1,000 Head</i>	<i>1,000 Head</i>	<i>1,000 Head</i>	<i>1,000 Head</i>	<i>1,000 Head</i>	<i>1,000 Head</i>
CO	47	33	46	56	72	101	90	110	255	300
KS	60	115	125	120	220	175	170	120	575	530
NE	42	60	76	83	166	145	216	207	500	495
TX	225	230	171	170	146	165	68	65	610	630
Oth Sts	120	135	68	75	130	105	170	170	488	485
US	494	573	486	504	734	691	714	672	2,428	2,440
	During July									
	Under 600		600-699		700-799		800 Plus		Total	
	1999	2000	1999	2000	1999	2000	1999	2000	1999	2000
	<i>1,000 Head</i>	<i>1,000 Head</i>	<i>1,000 Head</i>	<i>1,000 Head</i>	<i>1,000 Head</i>	<i>1,000 Head</i>	<i>1,000 Head</i>	<i>1,000 Head</i>	<i>1,000 Head</i>	<i>1,000 Head</i>
CO	28	23	27	30	49	72	71	60	175	185
KS	60	90	115	110	195	200	130	120	500	520
NE	40	41	62	54	88	110	110	120	300	325
TX	120	170	149	*135	141	135	70	*80	480	520
Oth Sts	85	100	47	57	105	80	120	130	357	367
US	333	424	400	*386	578	597	501	*510	1,812	1,917

* Revised.

**Cattle on Feed: Number Marketed, 1,000+ Capacity Feedlots,
by Month, State, and United States 1999-2000**

State	During Aug 1999	During Jul 2000	During Aug 2000		
			Number	as % of 1999	as % of Jul
	<i>1,000 Head</i>	<i>1,000 Head</i>	<i>1,000 Head</i>	<i>Percent</i>	<i>Percent</i>
AZ	22	35	33	150	94
CA	55	45	57	104	127
CO	250	220	265	106	120
ID	58	65	60	103	92
IA	45	54	50	111	93
KS	465	480	490	105	102
NE	390	430	410	105	95
NM	14	12	17	121	142
OK	70	62	76	109	123
SD	35	33	32	91	97
TX	520	520	580	112	112
WA	49	57	47	96	82
Oth Sts	73	69	70	96	101
US	2,046	2,082	2,187	107	105

**Cattle on Feed: Other Disappearance, 1,000+ Capacity Feedlots,
by Month, State, and United States 1999-2000 ¹**

State	During Aug 1999	During Jul 2000	During Aug 2000		
			Number	as % of 1999	as % of Jul
	<i>1,000 Head</i>	<i>1,000 Head</i>	<i>1,000 Head</i>	<i>Percent</i>	<i>Percent</i>
AZ	1	1	1	100	100
CA	5	5	4	80	80
CO	5	5	5	100	100
ID	1	1	3	300	300
IA	1	1	1	100	100
KS	10	10	10	100	100
NE	10	5	5	50	100
NM	2	3	4	200	133
OK	3	1	2	67	200
SD	1	1	1	100	100
TX	10	10	10	100	100
WA	4	0	1	25	
Oth Sts	2	1	2	100	200
US	55	44	49	89	111

¹ Includes death loss, movement from feedlots to pasture, and shipments to other feedlots for further feeding.

Terms and Definitions of Cattle on Feed Estimates

Cattle on feed are animals being fed a ration of grain, silage, hay and/or protein supplement for slaughter market that are expected to produce a carcass that will grade select or better. It excludes cattle being "backgrounded only" for later sale as feeders or later placement in another feedlot.

Placements are cattle put into a feedlot, fed a ration which will produce a carcass that will grade select or better, and are intended for the slaughter market.

Marketings are cattle shipped out of feedlots to a slaughter market.

Other disappearance includes death loss, movement from feedlots to pasture, and shipments to other feedlots for further feeding.

Reliability of Cattle on Feed Estimates

Survey Procedures: During January and July all known feedlots in the U.S. with capacity of 1,000 or more head are surveyed to provide data for cattle on feed estimates. During the other months, all known feedlots from 17 States are surveyed. The 17 States account for 98 percent of the cattle on feed in feedlots with capacity of 1,000 or more head.

Estimating Procedures: These cattle on feed estimates were prepared by the Agricultural Statistics Board after reviewing recommendations and analysis submitted by each State office. Regional and State survey data were reviewed for reasonableness with each other and with estimates from the previous month when setting the current estimates.

Revision Policy: Revisions to previous estimates are made to improve month to month relationships. Estimates for the previous month are subject to revision in all States each month when current estimates are made. In February, all monthly estimates for the previous year, and the number of feedlots and annual marketings from two years ago are reviewed and subject to revisions. The reviews are primarily based on slaughter data, state check-off or brand data, and any other data that may have been received after the original estimate was made. Estimates will also be reviewed after data from the Census of Agriculture are available. No revisions will be made after that date and estimates become final.

Reliability: Since all 1000+ capacity cattle on feed operators in every State are not included in the monthly survey, survey estimates are subject to sampling variability. Survey results are also subject to non-sampling errors such as omissions, duplications, and mistakes in reporting, recording, and processing the data. The effects of these errors cannot be measured directly. They are minimized through rigid quality controls in the data collection process and through a careful review of all reported data for consistency and reasonableness.

The next "Cattle on Feed" report will be released at 3 p.m. on October 20, 2000.

The United States Department of Agriculture (USDA) prohibits discrimination in all its programs on the basis of race, color, national origin, gender, religion, age, disability, political beliefs, sexual orientation, and marital or family status. (Not all prohibited bases apply to all programs.) Persons with disabilities who require alternative means for communication of program information (braille, large print, audiotape, etc.) should contact the USDA's TARGET Center at 202-720-2600 (voice and TDD).

To file a complaint of discrimination, write USDA, Director, Office of Civil Rights, Room 326-W, Whitten Building, 14th and Independence Avenue, SW, Washington, D.C., 20250-9410, or call 202-720-5964 (voice or TDD). USDA is an equal opportunity provider and employer.

ACCESS TO REPORTS!!

For your convenience, there are several ways to obtain NASS reports, data products, and services:

INTERNET ACCESS

All NASS reports are available free of charge on the worldwide Internet. For access, connect to the Internet and go to the NASS Home Page at: <http://www.usda.gov/nass/>. Select "Today's Reports" or Publications and then Reports by Calendar or Publications and then Search, by Title or Subject.

E-MAIL SUBSCRIPTION

There are two options for subscribing via e-mail. All NASS reports are available by subscription free of charge direct to your e-mail address. 1) Starting with the NASS Home Page at <http://www.usda.gov/nass/>, click on **Publications**, then click on the **Subscribe by E-mail** button which takes you to the page describing e-mail delivery of reports. Finally, click on **Go to the Subscription Page** and follow the instructions. 2) If you do NOT have Internet access, send an e-mail message to: usda-reports@usda.mannlib.cornell.edu. In the body of the message type the word: **list**.

AUTOFAX ACCESS

NASSFax service is available for some reports from your fax machine. Please call 202-720-2000, using the handset attached to your fax. Respond to the voice prompts. Document 0411 is a list of available reports.

PRINTED REPORTS OR DATA PRODUCTS

CALL OUR TOLL-FREE ORDER DESK: 800-999-6779 (U.S. and Canada)
Other areas, please call 703-834-0125 FAX: 703-834-0110
(Visa, MasterCard, check, or money order acceptable for payment.)

ASSISTANCE

For **assistance** with general agricultural statistics or further information about NASS or its products or services, contact the **Agricultural Statistics Hotline** at **800-727-9540**, 7:30 a.m. to 4:00 p.m. ET, or e-mail: nass@nass.usda.gov.

USDA to Hold Public Forum
October 16, 2000

Holiday Inn Mart Plaza
Chicago, Illinois

The National Agricultural Statistics Service will be organizing an open forum for Data Users. The purpose will be to provide updates on pending changes in the various statistical and information programs, and to seek comments and input from data users. The other USDA agencies to be represented will include the Agricultural Marketing Service, the Economic Research Service, the Foreign Agricultural Service, and the World Agricultural Outlook Board. The Foreign Trade Division from the Census Bureau and The National Weather Service will also be included in the meeting.

For registration details, see the NASS home page at <http://www.usda.gov/nass/> or contact Karlyn McCutcheon (NASS) at (202) 690-8141 or at hq_dapp@nass.usda.gov