



Cattle on Feed

Released October 20, 2000, by the National Agricultural Statistics Service (NASS), Agricultural Statistics Board, U.S. Department of Agriculture. For information on "Cattle on Feed" call Greg Thessen at (202) 720-3040, office hours 7:30 a.m. to 4:00 p.m. ET.

U.S. Cattle on Feed Up 7 Percent

Cattle and calves on feed for slaughter market in the United States for feedlots with capacity of 1,000 or more head totaled 11.0 million head on October 1, 2000. The inventory was 7 percent above October 1, 1999 and 13 percent above October 1, 1998. The inventory included 6.56 million steers and steer calves, up 6 percent from the previous year. This group accounted for 60 percent of the total inventory. Heifers and heifer calves accounted for 4.40 million head, up 9 percent from 1999.

Placements in feedlots during September totaled 2.69 million, 3 percent below 1999 but 1 percent above 1998. Net placements were 2.63 million. During September, placements of cattle and calves weighing less than 600 pounds were 775,000, 600-699 pounds were 612,000, 700-799 pounds were 681,000, and 800 pounds and greater were 618,000.

Marketings of fed cattle during September totaled 1.99 million, 2 percent above 1999 and 7 percent above 1998.

Other disappearance totaled 54,000 during September, 13 percent below 1999 and 11 percent below 1998.

Cattle on Feed in Historic 7 States Up 8 Percent

Cattle on feed October 1, 2000, in the historic 7 States for feedlots with capacity of 1,000 or more head totaled 9.50 million, up 8 percent from the previous year and 13 percent above October 1, 1998. The inventory included 5.58 million steers and steer calves, up 6 percent from the previous year. This group accounted for 59 percent of the total inventory. Heifers and heifer calves accounted for 3.88 million head, up 11 percent from 1999.

Placements in feedlots during September totaled 2.29 million, 3 percent below 1999 but 1 percent above 1998.

Marketings during September totaled 1.71 million, 2 percent above 1999 and 8 percent above 1998.

Other disappearance during September was 48,000 head, 13 percent below 1999 and 6 percent below 1998.

**Cattle on Feed: Number on Feed, Placements, Marketings, and
Other Disappearance, 1,000+ Capacity Feedlots,
United States, October 1, 1998-2000**

Item	Number			2000 as % of	
	1998	1999	2000	1998	1999
	<i>1,000 Head</i>	<i>1,000 Head</i>	<i>1,000 Head</i>	<i>Percent</i>	<i>Percent</i>
On Feed Sep 1 ¹	9,045	9,536	*10,374	115	109
Placed on Feed During Sep	2,660	2,759	2,686	101	97
Fed Cattle Marketed During Sep	1,863	1,957	1,990	107	102
Other Disappearance During Sep ²	61	62	54	89	87
On Feed Oct 1 ¹	9,781	10,276	11,016	113	107

* Revised.

¹ Cattle and calves on feed are animals for slaughter market being fed a ration of grain or other concentrates and are expected to produce a carcass that will grade select or better.

² Includes death loss, movement from feedlots to pasture, and shipments to other feedlots for further feeding.

**Cattle on Feed: Number on Feed, Placements, Marketings, and
Other Disappearance, 1,000+ Capacity Feedlots,
United States, September 1, 1998-2000**

Item	Number			2000 as % of	
	1998	1999	2000	1998	1999
	<i>1,000 Head</i>	<i>1,000 Head</i>	<i>1,000 Head</i>	<i>Percent</i>	<i>Percent</i>
On Feed Aug 1 ¹	8,996	9,209	10,180	113	111
Placed on Feed During Aug	2,063	2,428	2,440	118	100
Fed Cattle Marketed During Aug	1,962	2,046	*2,197	112	107
Other Disappearance During Aug ²	52	55	49	94	89
On Feed Sep 1 ¹	9,045	9,536	*10,374	115	109

* Revised.

¹ Cattle and calves on feed are animals for slaughter market being fed a ration of grain or other concentrates and are expected to produce a carcass that will grade select or better.

² Includes death loss, movement from feedlots to pasture, and shipments to other feedlots for further feeding.

**Cattle on Feed: Number on Feed by Class, 1,000+ Capacity Feedlots,
United States, October 1, 1998-2000**

Item	Number			2000 as % of	
	1998	1999	2000	1998	1999
	<i>1,000 Head</i>	<i>1,000 Head</i>	<i>1,000 Head</i>	<i>Percent</i>	<i>Percent</i>
Class on Feed Oct 1					
Steers and Steer Calves	5,967	6,218	6,562	110	106
Heifers and Heifer Calves	3,782	4,021	4,401	116	109
Cows and Bulls	32	37	53	166	143

**Cattle on Feed: Number on Feed, Placements, Marketings, and
Other Disappearance, 1,000+ Capacity Feedlots,
7 States, October 1, 1998-2000 ¹**

Item	Number			2000 as % of	
	1998	1999	2000	1998	1999
	<i>1,000 Head</i>	<i>1,000 Head</i>	<i>1,000 Head</i>	<i>Percent</i>	<i>Percent</i>
On Feed Sep 1 ²	7,750	8,185	*8,972	116	110
Placed on Feed During Sep	2,254	2,345	2,286	101	97
Fed Cattle Marketed During Sep	1,577	1,682	1,708	108	102
Other Disappearance During Sep ³	51	55	48	94	87
On Feed Oct 1 ²	8,376	8,793	9,502	113	108

* Revised.

¹ The 7 States include AZ, CA, CO, IA, KS, NE, and TX.

² Cattle and calves on feed are animals for slaughter market being fed a ration of grain or other concentrates and are expected to produce a carcass that will grade select or better.

³ Includes death loss, movement from feedlots to pasture, and shipments to other feedlots for further feeding.

**Cattle on Feed: Number on Feed, Placements, Marketings, and
Other Disappearance, 1,000+ Capacity Feedlots,
7 States, September 1, 1998-2000 ¹**

Item	Number			2000 as % of	
	1998	1999	2000	1998	1999
	<i>1,000 Head</i>	<i>1,000 Head</i>	<i>1,000 Head</i>	<i>Percent</i>	<i>Percent</i>
On Feed Aug 1 ²	7,706	7,889	8,812	114	112
Placed on Feed During Aug	1,773	2,085	2,091	118	100
Fed Cattle Marketed During Aug	1,687	1,747	*1,895	112	108
Other Disappearance During Aug ³	42	42	36	86	86
On Feed Sep 1 ²	7,750	8,185	*8,972	116	110

* Revised.

¹ The 7 States include AZ, CA, CO, IA, KS, NE, and TX.

² Cattle and calves on feed are animals for slaughter market being fed a ration of grain or other concentrates and are expected to produce a carcass that will grade select or better.

³ Includes death loss, movement from feedlots to pasture, and shipments to other feedlots for further feeding.

**Cattle on Feed: Number on Feed by Class, 1,000+ Capacity Feedlots,
7 States, October 1, 1998-2000 ¹**

Item	Number			2000 as % of	
	1998	1999	2000	1998	1999
	<i>1,000 Head</i>	<i>1,000 Head</i>	<i>1,000 Head</i>	<i>Percent</i>	<i>Percent</i>
Class on Feed Oct 1					
Steers and Steer Calves	5,086	5,286	5,584	110	106
Heifers and Heifer Calves	3,268	3,479	3,877	119	111
Cows and Bulls	22	28	41	186	146

¹ The 7 States include AZ, CA, CO, IA, KS, NE, and TX.

**Cattle on Feed: Number on Feed, 1,000+ Capacity Feedlots,
by Month, State, and United States 1999-2000 ¹**

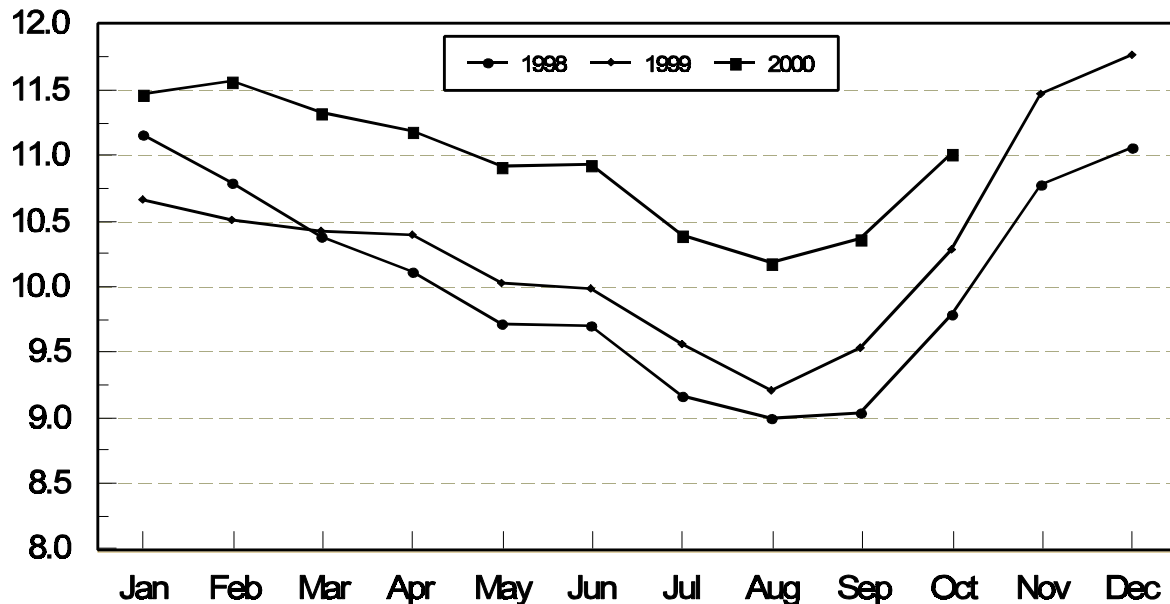
State	Oct 1, 1999	Sep 1, 2000	Oct 1, 2000		
			Number	as % of 1999	as % of Sep
	<i>1,000 Head</i>	<i>1,000 Head</i>	<i>1,000 Head</i>	<i>Percent</i>	<i>Percent</i>
AZ	208	257	272	131	106
CA	380	415	420	111	101
CO	1,070	*1,070	1,170	109	109
ID	310	290	310	100	107
IA	315	330	340	108	103
KS	2,250	2,220	2,300	102	104
NE	1,900	1,920	2,100	111	109
NM	91	90	96	105	107
OK	380	375	400	105	107
SD	111	128	145	131	113
TX	2,670	2,760	2,900	109	105
WA	246	204	228	93	112
Oth Sts	345	315	335	97	106
US	10,276	*10,374	11,016	107	106

* Revised.

¹ Cattle and calves on feed are animals for slaughter market being fed a ration of grain or other concentrates and are expected to produce a carcass that will grade select or better.

**United States Cattle on Feed
1,000+ Capacity Feedlots**

Million Head



**Cattle on Feed: Number Placed on Feed, 1,000+ Capacity Feedlots,
by Month, State, and United States 1999-2000**

State	During Sep 1999	During Aug 2000	During Sep 2000		
			Number	as % of 1999	as % of Aug
	<i>1,000 Head</i>	<i>1,000 Head</i>	<i>1,000 Head</i>	<i>Percent</i>	<i>Percent</i>
AZ	29	29	40	138	138
CA	56	56	59	105	105
CO	330	300	335	102	112
ID	80	73	75	94	103
IA	60	51	52	87	102
KS	600	530	540	90	102
NE	580	495	560	97	113
NM	23	18	20	87	111
OK	107	98	110	103	112
SD	32	35	50	156	143
TX	690	630	700	101	111
WA	75	58	62	83	107
Oth Sts	97	67	83	86	124
US	2,759	2,440	2,686	97	110

**Cattle on Feed: Number Placed on Feed by Weight Group, 1,000+ Capacity
Feedlots, by Month, State, and United States, 1999-2000**

State	During September									
	Under 600		600-699		700-799		800 Plus		Total	
	1999	2000	1999	2000	1999	2000	1999	2000	1999	2000
	<i>1,000 Head</i>	<i>1,000 Head</i>	<i>1,000 Head</i>	<i>1,000 Head</i>	<i>1,000 Head</i>	<i>1,000 Head</i>	<i>1,000 Head</i>	<i>1,000 Head</i>	<i>1,000 Head</i>	<i>1,000 Head</i>
CO	40	47	55	63	106	103	129	122	330	335
KS	125	150	120	140	195	150	160	100	600	540
NE	84	128	88	98	167	168	241	166	580	560
TX	240	265	210	230	165	145	75	60	690	700
Oth Sts	140	185	84	81	125	115	210	170	559	551
US	629	775	557	612	758	681	815	618	2,759	2,686
	During August									
	Under 600		600-699		700-799		800 Plus		Total	
	1999	2000	1999	2000	1999	2000	1999	2000	1999	2000
	<i>1,000 Head</i>	<i>1,000 Head</i>	<i>1,000 Head</i>	<i>1,000 Head</i>	<i>1,000 Head</i>	<i>1,000 Head</i>	<i>1,000 Head</i>	<i>1,000 Head</i>	<i>1,000 Head</i>	<i>1,000 Head</i>
CO	47	33	46	56	72	101	90	110	255	300
KS	60	115	125	120	220	175	170	120	575	530
NE	42	60	76	83	166	145	216	207	500	495
TX	225	230	171	170	146	165	68	65	610	630
Oth Sts	120	135	68	75	130	105	170	170	488	485
US	494	573	486	504	734	691	714	672	2,428	2,440

**Cattle on Feed: Number Marketed, 1,000+ Capacity Feedlots,
by Month, State, and United States 1999-2000**

State	During Sep 1999	During Aug 2000	During Sep 2000		
			Number	as % of 1999	as % of Aug
	<i>1,000 Head</i>	<i>1,000 Head</i>	<i>1,000 Head</i>	<i>Percent</i>	<i>Percent</i>
AZ	20	33	23	115	70
CA	48	57	49	102	86
CO	210	*275	225	107	82
ID	54	60	53	98	88
IA	44	50	41	93	82
KS	430	490	450	105	92
NE	370	410	370	100	90
NM	12	17	13	108	76
OK	75	76	83	111	109
SD	30	32	33	110	103
TX	560	580	550	98	95
WA	43	47	38	88	81
Oth Sts	61	70	62	102	89
US	1,957	*2,197	1,990	102	91

* Revised.

**Cattle on Feed: Other Disappearance, 1,000+ Capacity Feedlots,
by Month, State, and United States 1999-2000 ¹**

State	During Sep 1999	During Aug 2000	During Sep 2000		
			Number	as % of 1999	as % of Aug
	<i>1,000 Head</i>	<i>1,000 Head</i>	<i>1,000 Head</i>	<i>Percent</i>	<i>Percent</i>
AZ	1	1	2	200	200
CA	3	4	5	167	125
CO	10	5	10	100	200
ID	1	3	2	200	67
IA	1	1	1	100	100
KS	10	10	10	100	100
NE	10	5	10	100	200
NM	1	4	1	100	25
OK	2	2	2	100	100
SD	1	1	0		
TX	20	10	10	50	100
WA	1	1	0		
Oth Sts	1	2	1	100	50
US	62	49	54	87	110

¹ Includes death loss, movement from feedlots to pasture, and shipments to other feedlots for further feeding.

**Cattle on Feed: Number on Feed by Class, 1,000+ Capacity Feedlots,
by Quarter, State, and United States, 1999-2000**

State	Steers & Steer Calves			Heifers & Heifer Calves			Cows and Bulls		
	Oct 1, 1999	Jul 1, 2000	Oct 1, 2000	Oct 1, 1999	Jul 1, 2000	Oct 1, 2000	Oct 1, 1999	Jul 1, 2000	Oct 1, 2000
	<i>1,000 Head</i>	<i>1,000 Head</i>	<i>1,000 Head</i>	<i>1,000 Head</i>	<i>1,000 Head</i>	<i>1,000 Head</i>	<i>1,000 Head</i>	<i>1,000 Head</i>	<i>1,000 Head</i>
AZ	199	261	259	9	13	13	0	0	0
CA	340	365	375	38	45	45	2	0	0
CO	625	620	670	440	465	495	5	5	5
ID	207	199	220	102	91	89	1	0	1
IA	192	210	205	123	135	135	0	0	0
KS	1,410	1,220	1,280	830	940	1,020	10	0	0
NE	1,110	1,120	1,195	780	805	870	10	25	35
NM	39	40	41	52	49	55	0	0	0
OK	220	205	240	159	149	157	1	1	3
SD	62	81	87	45	58	55	4	5	3
TX	1,410	1,530	1,600	1,259	1,199	1,299	1	1	1
WA	149	129	150	97	72	78	0	1	0
Oth Sts	255	240	240	87	106	90	3	4	5
US	6,218	6,220	6,562	4,021	4,127	4,401	37	42	53

Terms and Definitions of Cattle on Feed Estimates

Cattle on feed are animals being fed a ration of grain, silage, hay and/or protein supplement for slaughter market that are expected to produce a carcass that will grade select or better. It excludes cattle being "backgrounded only" for later sale as feeders or later placement in another feedlot.

Placements are cattle put into a feedlot, fed a ration which will produce a carcass that will grade select or better, and are intended for the slaughter market.

Marketings are cattle shipped out of feedlots to a slaughter market.

Other disappearance includes death loss, movement from feedlots to pasture, and shipments to other feedlots for further feeding.

Reliability of Cattle on Feed Estimates

Survey Procedures: During January and July all known feedlots in the U.S. with capacity of 1,000 or more head are surveyed to provide data for cattle on feed estimates. During the other months, all known feedlots from 17 States are surveyed. The 17 States account for 98 percent of the cattle on feed in feedlots with capacity of 1,000 or more head.

Estimating Procedures: These cattle on feed estimates were prepared by the Agricultural Statistics Board after reviewing recommendations and analysis submitted by each State office. Regional and State survey data were reviewed for reasonableness with each other and with estimates from the previous month when setting the current estimates.

Revision Policy: Revisions to previous estimates are made to improve month to month relationships. Estimates for the previous month are subject to revision in all States each month when current estimates are made. In February, all monthly estimates for the previous year, and the number of feedlots and annual marketings from two years ago are reviewed and subject to revisions. The reviews are primarily based on slaughter data, state check-off or brand data, and any other data that may have been received after the original estimate was made. Estimates will also be reviewed after data from the Census of Agriculture are available. No revisions will be made after that date and estimates become final.

Reliability: Since all 1000+ capacity cattle on feed operators in every State are not included in the monthly survey, survey estimates are subject to sampling variability. Survey results are also subject to non-sampling errors such as omissions, duplications, and mistakes in reporting, recording, and processing the data. The effects of these errors cannot be measured directly. They are minimized through rigid quality controls in the data collection process and through a careful review of all reported data for consistency and reasonableness.

The next "Cattle on Feed" report will be released at 3 p.m. on November 17, 2000.

The United States Department of Agriculture (USDA) prohibits discrimination in all its programs on the basis of race, color, national origin, gender, religion, age, disability, political beliefs, sexual orientation, and marital or family status. (Not all prohibited bases apply to all programs.) Persons with disabilities who require alternative means for communication of program information (braille, large print, audiotape, etc.) should contact the USDA's TARGET Center at 202-720-2600 (voice and TDD).

To file a complaint of discrimination, write USDA, Director, Office of Civil Rights, Room 326-W, Whitten Building, 14th and Independence Avenue, SW, Washington, D.C., 20250-9410, or call 202-720-5964 (voice or TDD). USDA is an equal opportunity provider and employer.

ACCESS TO REPORTS!!

For your convenience, there are several ways to obtain NASS reports, data products, and services:

INTERNET ACCESS

All NASS reports are available free of charge on the worldwide Internet. For access, connect to the Internet and go to the NASS Home Page at: <http://www.usda.gov/nass/>. Select "Today's Reports" or Publications and then Reports by Calendar or Publications and then Search, by Title or Subject.

E-MAIL SUBSCRIPTION

There are two options for subscribing via e-mail. All NASS reports are available by subscription free of charge direct to your e-mail address. 1) Starting with the NASS Home Page at <http://www.usda.gov/nass/>, click on **Publications**, then click on the **Subscribe by E-mail** button which takes you to the page describing e-mail delivery of reports. Finally, click on **Go to the Subscription Page** and follow the instructions. 2) If you do NOT have Internet access, send an e-mail message to: usda-reports@usda.mannlib.cornell.edu. In the body of the message type the word: **list**.

AUTOFAX ACCESS

NASSFax service is available for some reports from your fax machine. Please call 202-720-2000, using the handset attached to your fax. Respond to the voice prompts. Document 0411 is a list of available reports.

PRINTED REPORTS OR DATA PRODUCTS

CALL OUR TOLL-FREE ORDER DESK: 800-999-6779 (U.S. and Canada)
Other areas, please call 703-834-0125 FAX: 703-834-0110
(Visa, MasterCard, check, or money order acceptable for payment.)

ASSISTANCE

For **assistance** with general agricultural statistics or further information about NASS or its products or services, contact the **Agricultural Statistics Hotline** at **800-727-9540**, 7:30 a.m. to 4:00 p.m. ET, or e-mail: nass@nass.usda.gov.