



Cattle on Feed

Released November 17, 2000, by the National Agricultural Statistics Service (NASS), Agricultural Statistics Board, U.S. Department of Agriculture. For information on "Cattle on Feed" call Greg Thessen at (202) 720-3040, office hours 7:30 a.m. to 4:00 p.m. ET.

U.S. Cattle on Feed Up 3 Percent

Cattle and calves on feed for slaughter market in the United States for feedlots with capacity of 1,000 or more head totaled 11.9 million head on November 1, 2000. The inventory was 3 percent above November 1, 1999 and 10 percent above November 1, 1998.

Placements in feedlots during October totaled 2.83 million, 9 percent below 1999 and slightly below 1998. Net placements were 2.76 million. During October, placements of cattle and calves weighing less than 600 pounds were 1.07 million, 600-699 pounds were 755,000, 700-799 pounds were 531,000, and 800 pounds and greater were 477,000.

Marketings of fed cattle during October totaled 1.92 million, 4 percent above 1999 and 8 percent above 1998.

Other disappearance totaled 66,000 during October, 17 percent below 1999 but 27 percent above 1998.

Cattle on Feed in Historic 7 States Up 4 Percent

Cattle on feed November 1, 2000, in the historic 7 States for feedlots with capacity of 1,000 or more head totaled 10.2 million, up 4 percent from the previous year and 11 percent above November 1, 1998.

Placements in feedlots during October totaled 2.39 million, 9 percent below 1999 and slightly below 1998.

Marketings during October totaled 1.65 million, 5 percent above 1999 and 7 percent above 1998.

Other disappearance during October was 50,000 head, 21 percent below 1999 but 11 percent above 1998.

**Cattle on Feed: Number on Feed, Placements, Marketings, and
Other Disappearance, 1,000+ Capacity Feedlots,
United States, November 1, 1998-2000**

Item	Number			2000 as % of	
	1998	1999	2000	1998	1999
	<i>1,000 Head</i>	<i>1,000 Head</i>	<i>1,000 Head</i>	<i>Percent</i>	<i>Percent</i>
On Feed Oct 1 ¹	9,781	10,276	11,016	113	107
Placed on Feed During Oct	2,830	3,114	2,829	100	91
Fed Cattle Marketed During Oct	1,775	1,835	1,915	108	104
Other Disappearance During Oct ²	52	80	66	127	83
On Feed Nov 1 ¹	10,784	11,475	11,864	110	103

¹ Cattle and calves on feed are animals for slaughter market being fed a ration of grain or other concentrates and are expected to produce a carcass that will grade select or better.

² Includes death loss, movement from feedlots to pasture, and shipments to other feedlots for further feeding.

**Cattle on Feed: Number on Feed, Placements, Marketings, and
Other Disappearance, 1,000+ Capacity Feedlots,
United States, October 1, 1998-2000**

Item	Number			2000 as % of	
	1998	1999	2000	1998	1999
	<i>1,000 Head</i>	<i>1,000 Head</i>	<i>1,000 Head</i>	<i>Percent</i>	<i>Percent</i>
On Feed Sep 1 ¹	9,045	9,536	10,374	115	109
Placed on Feed During Sep	2,660	2,759	2,686	101	97
Fed Cattle Marketed During Sep	1,863	1,957	1,990	107	102
Other Disappearance During Sep ²	61	62	54	89	87
On Feed Oct 1 ¹	9,781	10,276	11,016	113	107

¹ Cattle and calves on feed are animals for slaughter market being fed a ration of grain or other concentrates and are expected to produce a carcass that will grade select or better.

² Includes death loss, movement from feedlots to pasture, and shipments to other feedlots for further feeding.

**Cattle on Feed: Number on Feed, Placements, Marketings, and
Other Disappearance, 1,000+ Capacity Feedlots,
7 States, November 1, 1998-2000 ¹**

Item	Number			2000 as % of	
	1998	1999	2000	1998	1999
	<i>1,000 Head</i>	<i>1,000 Head</i>	<i>1,000 Head</i>	<i>Percent</i>	<i>Percent</i>
On Feed Oct 1 ²	8,376	8,793	9,502	113	108
Placed on Feed During Oct	2,396	2,629	2,387	100	91
Fed Cattle Marketed During Oct	1,537	1,570	1,647	107	105
Other Disappearance During Oct ³	45	63	50	111	79
On Feed Nov 1 ²	9,190	9,789	10,192	111	104

¹ The 7 States include AZ, CA, CO, IA, KS, NE, and TX.

² Cattle and calves on feed are animals for slaughter market being fed a ration of grain or other concentrates and are expected to produce a carcass that will grade select or better.

³ Includes death loss, movement from feedlots to pasture, and shipments to other feedlots for further feeding.

**Cattle on Feed: Number on Feed, Placements, Marketings, and
Other Disappearance, 1,000+ Capacity Feedlots,
7 States, October 1, 1998-2000 ¹**

Item	Number			2000 as % of	
	1998	1999	2000	1998	1999
	<i>1,000 Head</i>	<i>1,000 Head</i>	<i>1,000 Head</i>	<i>Percent</i>	<i>Percent</i>
On Feed Sep 1 ²	7,750	8,185	8,972	116	110
Placed on Feed During Sep	2,254	2,345	2,286	101	97
Fed Cattle Marketed During Sep	1,577	1,682	1,708	108	102
Other Disappearance During Sep ³	51	55	48	94	87
On Feed Oct 1 ²	8,376	8,793	9,502	113	108

¹ The 7 States include AZ, CA, CO, IA, KS, NE, and TX.

² Cattle and calves on feed are animals for slaughter market being fed a ration of grain or other concentrates and are expected to produce a carcass that will grade select or better.

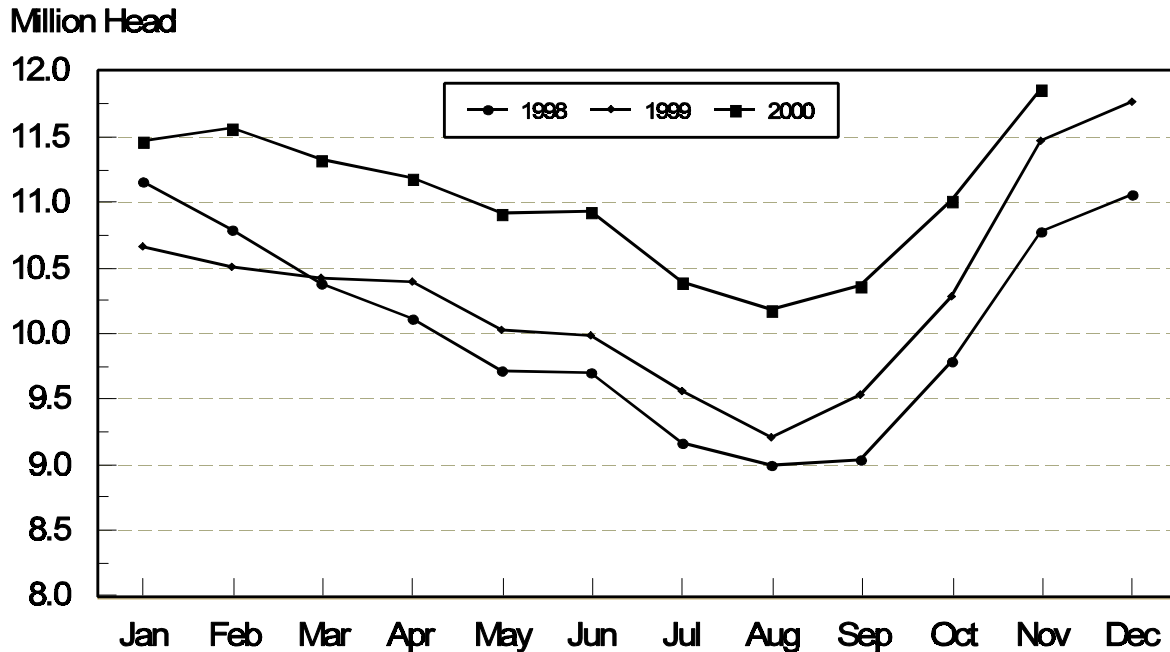
³ Includes death loss, movement from feedlots to pasture, and shipments to other feedlots for further feeding.

**Cattle on Feed: Number on Feed, 1,000+ Capacity Feedlots,
by Month, State, and United States 1999-2000 ¹**

State	Nov 1, 1999	Oct 1, 2000	Nov 1, 2000		
			Number	as % of 1999	as % of Oct
	<i>1,000 Head</i>	<i>1,000 Head</i>	<i>1,000 Head</i>	<i>Percent</i>	<i>Percent</i>
AZ	239	272	292	122	107
CA	395	420	440	111	105
CO	1,220	1,170	1,250	102	107
ID	325	310	325	100	105
IA	345	340	380	110	112
KS	2,410	2,300	2,420	100	105
NE	2,250	2,100	2,380	106	113
NM	107	96	109	102	114
OK	435	400	410	94	103
SD	157	145	180	115	124
TX	2,930	2,900	3,030	103	104
WA	257	228	243	95	107
Oth Sts	405	335	405	100	121
US	11,475	11,016	11,864	103	108

¹ Cattle and calves on feed are animals for slaughter market being fed a ration of grain or other concentrates and are expected to produce a carcass that will grade select or better.

**United States Cattle on Feed
1,000+ Capacity Feedlots**



**Cattle on Feed: Number Placed on Feed, 1,000+ Capacity Feedlots,
by Month, State, and United States 1999-2000**

State	During Oct 1999	During Sep 2000	During Oct 2000		
			Number	as % of 1999	as % of Sep
	<i>1,000 Head</i>	<i>1,000 Head</i>	<i>1,000 Head</i>	<i>Percent</i>	<i>Percent</i>
AZ	48	40	42	88	105
CA	67	59	76	113	129
CO	360	335	290	81	87
ID	76	75	79	104	105
IA	84	52	99	118	190
KS	570	540	550	96	102
NE	690	560	660	96	118
NM	31	20	27	87	135
OK	133	110	88	66	80
SD	70	50	70	100	140
TX	810	700	670	83	96
WA	56	62	59	105	95
Oth Sts	119	83	119	100	143
US	3,114	2,686	2,829	91	105

**Cattle on Feed: Number Placed on Feed by Weight Group, 1,000+ Capacity
Feedlots, by Month, State, and United States, 1999-2000**

State	During October									
	Under 600		600-699		700-799		800 Plus		Total	
	1999	2000	1999	2000	1999	2000	1999	2000	1999	2000
	<i>1,000 Head</i>	<i>1,000 Head</i>	<i>1,000 Head</i>	<i>1,000 Head</i>	<i>1,000 Head</i>	<i>1,000 Head</i>	<i>1,000 Head</i>	<i>1,000 Head</i>	<i>1,000 Head</i>	<i>1,000 Head</i>
CO	92	95	64	70	98	70	106	55	360	290
KS	160	210	150	130	160	140	100	70	570	550
NE	215	226	183	200	125	92	167	142	690	660
TX	290	235	255	240	195	135	70	60	810	670
Oth Sts	270	300	150	115	114	94	150	150	684	659
US	1,027	1,066	802	755	692	531	593	477	3,114	2,829
	During September									
	Under 600		600-699		700-799		800 Plus		Total	
	1999	2000	1999	2000	1999	2000	1999	2000	1999	2000
	<i>1,000 Head</i>	<i>1,000 Head</i>	<i>1,000 Head</i>	<i>1,000 Head</i>	<i>1,000 Head</i>	<i>1,000 Head</i>	<i>1,000 Head</i>	<i>1,000 Head</i>	<i>1,000 Head</i>	<i>1,000 Head</i>
CO	40	47	55	63	106	103	129	122	330	335
KS	125	150	120	140	195	150	160	100	600	540
NE	84	128	88	98	167	168	241	166	580	560
TX	240	265	210	230	165	145	75	60	690	700
Oth Sts	140	185	84	81	125	115	210	170	559	551
US	629	775	557	612	758	681	815	618	2,759	2,686

**Cattle on Feed: Number Marketed, 1,000+ Capacity Feedlots,
by Month, State, and United States 1999-2000**

State	During Oct 1999	During Sep 2000	During Oct 2000		
			Number	as % of 1999	as % of Sep
	<i>1,000 Head</i>	<i>1,000 Head</i>	<i>1,000 Head</i>	<i>Percent</i>	<i>Percent</i>
AZ	15	23	21	140	91
CA	47	49	49	104	100
CO	205	225	205	100	91
ID	58	53	60	103	113
IA	53	41	57	108	139
KS	390	450	415	106	92
NE	330	370	370	112	100
NM	14	13	13	93	100
OK	75	83	74	99	89
SD	23	33	34	148	103
TX	530	550	530	100	96
WA	37	38	39	105	103
Oth Sts	58	62	48	83	77
US	1,835	1,990	1,915	104	96

**Cattle on Feed: Other Disappearance, 1,000+ Capacity Feedlots,
by Month, State, and United States 1999-2000 ¹**

State	During Oct 1999	During Sep 2000	During Oct 2000		
			Number	as % of 1999	as % of Sep
	<i>1,000 Head</i>	<i>1,000 Head</i>	<i>1,000 Head</i>	<i>Percent</i>	<i>Percent</i>
AZ	2	2	1	50	50
CA	5	5	7	140	140
CO	5	10	5	100	50
ID	3	2	4	133	200
IA	1	1	2	200	200
KS	20	10	15	75	150
NE	10	10	10	100	100
NM	1	1	1	100	100
OK	3	2	4	133	200
SD	1	0	1	100	
TX	20	10	10	50	100
WA	8	0	5	63	
Oth Sts	1	1	1	100	100
US	80	54	66	83	122

¹ Includes death loss, movement from feedlots to pasture, and shipments to other feedlots for further feeding.

Terms and Definitions of Cattle on Feed Estimates

Cattle on feed are animals being fed a ration of grain, silage, hay and/or protein supplement for slaughter market that are expected to produce a carcass that will grade select or better. It excludes cattle being "backgrounded only" for later sale as feeders or later placement in another feedlot.

Placements are cattle put into a feedlot, fed a ration which will produce a carcass that will grade select or better, and are intended for the slaughter market.

Marketings are cattle shipped out of feedlots to a slaughter market.

Other disappearance includes death loss, movement from feedlots to pasture, and shipments to other feedlots for further feeding.

Reliability of Cattle on Feed Estimates

Survey Procedures: During January and July all known feedlots in the U.S. with capacity of 1,000 or more head are surveyed to provide data for cattle on feed estimates. During the other months, all known feedlots from 17 States are surveyed. The 17 States account for 98 percent of the cattle on feed in feedlots with capacity of 1,000 or more head.

Estimating Procedures: These cattle on feed estimates were prepared by the Agricultural Statistics Board after reviewing recommendations and analysis submitted by each State office. Regional and State survey data were reviewed for reasonableness with each other and with estimates from the previous month when setting the current estimates.

Revision Policy: Revisions to previous estimates are made to improve month to month relationships. Estimates for the previous month are subject to revision in all States each month when current estimates are made. In February, all monthly estimates for the previous year, and the number of feedlots and annual marketings from two years ago are reviewed and subject to revisions. The reviews are primarily based on slaughter data, state check-off or brand data, and any other data that may have been received after the original estimate was made. Estimates will also be reviewed after data from the Census of Agriculture are available. No revisions will be made after that date and estimates become final.

Reliability: Since all 1000+ capacity cattle on feed operators in every State are not included in the monthly survey, survey estimates are subject to sampling variability. Survey results are also subject to non-sampling errors such as omissions, duplications, and mistakes in reporting, recording, and processing the data. The effects of these errors cannot be measured directly. They are minimized through rigid quality controls in the data collection process and through a careful review of all reported data for consistency and reasonableness.

The next "Cattle on Feed" report will be released at 3 p.m. on December 15, 2000.

The United States Department of Agriculture (USDA) prohibits discrimination in all its programs on the basis of race, color, national origin, gender, religion, age, disability, political beliefs, sexual orientation, and marital or family status. (Not all prohibited bases apply to all programs.) Persons with disabilities who require alternative means for communication of program information (braille, large print, audiotape, etc.) should contact the USDA's TARGET Center at 202-720-2600 (voice and TDD).

To file a complaint of discrimination, write USDA, Director, Office of Civil Rights, Room 326-W, Whitten Building, 14th and Independence Avenue, SW, Washington, D.C., 20250-9410, or call 202-720-5964 (voice or TDD). USDA is an equal opportunity provider and employer.

ACCESS TO REPORTS!!

For your convenience, there are several ways to obtain NASS reports, data products, and services:

INTERNET ACCESS

All NASS reports are available free of charge on the worldwide Internet. For access, connect to the Internet and go to the NASS Home Page at: <http://www.usda.gov/nass/>. Select "Today's Reports" or Publications and then Reports by Calendar or Publications and then Search, by Title or Subject.

E-MAIL SUBSCRIPTION

There are two options for subscribing via e-mail. All NASS reports are available by subscription free of charge direct to your e-mail address. 1) Starting with the NASS Home Page at <http://www.usda.gov/nass/>, click on **Publications**, then click on the **Subscribe by E-mail** button which takes you to the page describing e-mail delivery of reports. Finally, click on **Go to the Subscription Page** and follow the instructions. 2) If you do NOT have Internet access, send an e-mail message to: usda-reports@usda.mannlib.cornell.edu. In the body of the message type the word: **list**.

AUTOFAX ACCESS

NASSFax service is available for some reports from your fax machine. Please call 202-720-2000, using the handset attached to your fax. Respond to the voice prompts. Document 0411 is a list of available reports.

PRINTED REPORTS OR DATA PRODUCTS

CALL OUR TOLL-FREE ORDER DESK: 800-999-6779 (U.S. and Canada)
Other areas, please call 703-834-0125 FAX: 703-834-0110
(Visa, MasterCard, check, or money order acceptable for payment.)

ASSISTANCE

For **assistance** with general agricultural statistics or further information about NASS or its products or services, contact the **Agricultural Statistics Hotline** at **800-727-9540**, 7:30 a.m. to 4:00 p.m. ET, or e-mail: nass@nass.usda.gov.