



# Cattle on Feed

---

Released December 15, 2000, by the National Agricultural Statistics Service (NASS), Agricultural Statistics Board, U.S. Department of Agriculture. For information on "Cattle on Feed" call Greg Thessen at (202) 720-3040, office hours 7:30 a.m. to 4:00 p.m. ET.

## U.S. Cattle on Feed Up 2 Percent

**Cattle and calves on feed** for slaughter market in the United States for feedlots with capacity of 1,000 or more head totaled 11.9 million head on December 1, 2000. The inventory was 2 percent above December 1, 1999 and 8 percent above December 1, 1998.

**Placements** in feedlots during November totaled 2.01 million, 7 percent below 1999 and 2 percent below 1998. Net placements were 1.91 million. During November, placements of cattle and calves weighing less than 600 pounds were 757,000, 600-699 pounds were 559,000, 700-799 pounds were 405,000, and 800 pounds and greater were 293,000.

**Marketings** of fed cattle during November totaled 1.83 million, 1 percent above 1999 and 7 percent above 1998.

**Other disappearance** totaled 105,000 during November, 27 percent above 1999 and 35 percent above 1998.

## Cattle on Feed in Historic 7 States Up 2 Percent

**Cattle on feed** December 1, 2000, in the historic 7 States for feedlots with capacity of 1,000 or more head totaled 10.2 million, up 2 percent from the previous year and 9 percent above December 1, 1998.

**Placements** in feedlots during November totaled 1.68 million, 8 percent below 1999 and 3 percent below 1998.

**Marketings** during November totaled 1.57 million, 2 percent above 1999 and 8 percent above 1998.

**Other disappearance** during November was 89,000 head, 44 percent above 1999 and 41 percent above 1998.

**Cattle on Feed: Number on Feed, Placements, Marketings, and  
Other Disappearance, 1,000+ Capacity Feedlots,  
United States, December 1, 1998-2000**

Item	Number			2000 as % of	
	1998	1999	2000	1998	1999
	<i>1,000 Head</i>	<i>1,000 Head</i>	<i>1,000 Head</i>	<i>Percent</i>	<i>Percent</i>
On Feed Nov 1 <sup>1</sup>	10,784	11,475	11,864	110	103
Placed on Feed During Nov	2,065	2,170	2,014	98	93
Fed Cattle Marketed During Nov	1,708	1,801	1,825	107	101
Other Disappearance During Nov <sup>2</sup>	78	83	105	135	127
On Feed Dec 1 <sup>1</sup>	11,063	11,761	11,948	108	102

<sup>1</sup> Cattle and calves on feed are animals for slaughter market being fed a ration of grain or other concentrates and are expected to produce a carcass that will grade select or better.

<sup>2</sup> Includes death loss, movement from feedlots to pasture, and shipments to other feedlots for further feeding.

**Cattle on Feed: Number on Feed, Placements, Marketings, and  
Other Disappearance, 1,000+ Capacity Feedlots,  
United States, November 1, 1998-2000**

Item	Number			2000 as % of	
	1998	1999	2000	1998	1999
	<i>1,000 Head</i>	<i>1,000 Head</i>	<i>1,000 Head</i>	<i>Percent</i>	<i>Percent</i>
On Feed Oct 1 <sup>1</sup>	9,781	10,276	11,016	113	107
Placed on Feed During Oct	2,830	3,114	2,829	100	91
Fed Cattle Marketed During Oct	1,775	1,835	1,915	108	104
Other Disappearance During Oct <sup>2</sup>	52	80	66	127	83
On Feed Nov 1 <sup>1</sup>	10,784	11,475	11,864	110	103

<sup>1</sup> Cattle and calves on feed are animals for slaughter market being fed a ration of grain or other concentrates and are expected to produce a carcass that will grade select or better.

<sup>2</sup> Includes death loss, movement from feedlots to pasture, and shipments to other feedlots for further feeding.

**Cattle on Feed: Number on Feed, Placements, Marketings, and  
Other Disappearance, 1,000+ Capacity Feedlots,  
7 States, December 1, 1998-2000<sup>1</sup>**

Item	Number			2000 as % of	
	1998	1999	2000	1998	1999
	<i>1,000 Head</i>	<i>1,000 Head</i>	<i>1,000 Head</i>	<i>Percent</i>	<i>Percent</i>
On Feed Nov 1 <sup>2</sup>	9,190	9,789	10,192	111	104
Placed on Feed During Nov	1,732	1,823	1,678	97	92
Fed Cattle Marketed During Nov	1,455	1,530	1,568	108	102
Other Disappearance During Nov <sup>3</sup>	63	62	89	141	144
On Feed Dec 1 <sup>2</sup>	9,404	10,020	10,213	109	102

<sup>1</sup> The 7 States include AZ, CA, CO, IA, KS, NE, and TX.

<sup>2</sup> Cattle and calves on feed are animals for slaughter market being fed a ration of grain or other concentrates and are expected to produce a carcass that will grade select or better.

<sup>3</sup> Includes death loss, movement from feedlots to pasture, and shipments to other feedlots for further feeding.

**Cattle on Feed: Number on Feed, Placements, Marketings, and  
Other Disappearance, 1,000+ Capacity Feedlots,  
7 States, November 1, 1998-2000<sup>1</sup>**

Item	Number			2000 as % of	
	1998	1999	2000	1998	1999
	<i>1,000 Head</i>	<i>1,000 Head</i>	<i>1,000 Head</i>	<i>Percent</i>	<i>Percent</i>
On Feed Oct 1 <sup>2</sup>	8,376	8,793	9,502	113	108
Placed on Feed During Oct	2,396	2,629	2,387	100	91
Fed Cattle Marketed During Oct	1,537	1,570	1,647	107	105
Other Disappearance During Oct <sup>3</sup>	45	63	50	111	79
On Feed Nov 1 <sup>2</sup>	9,190	9,789	10,192	111	104

<sup>1</sup> The 7 States include AZ, CA, CO, IA, KS, NE, and TX.

<sup>2</sup> Cattle and calves on feed are animals for slaughter market being fed a ration of grain or other concentrates and are expected to produce a carcass that will grade select or better.

<sup>3</sup> Includes death loss, movement from feedlots to pasture, and shipments to other feedlots for further feeding.

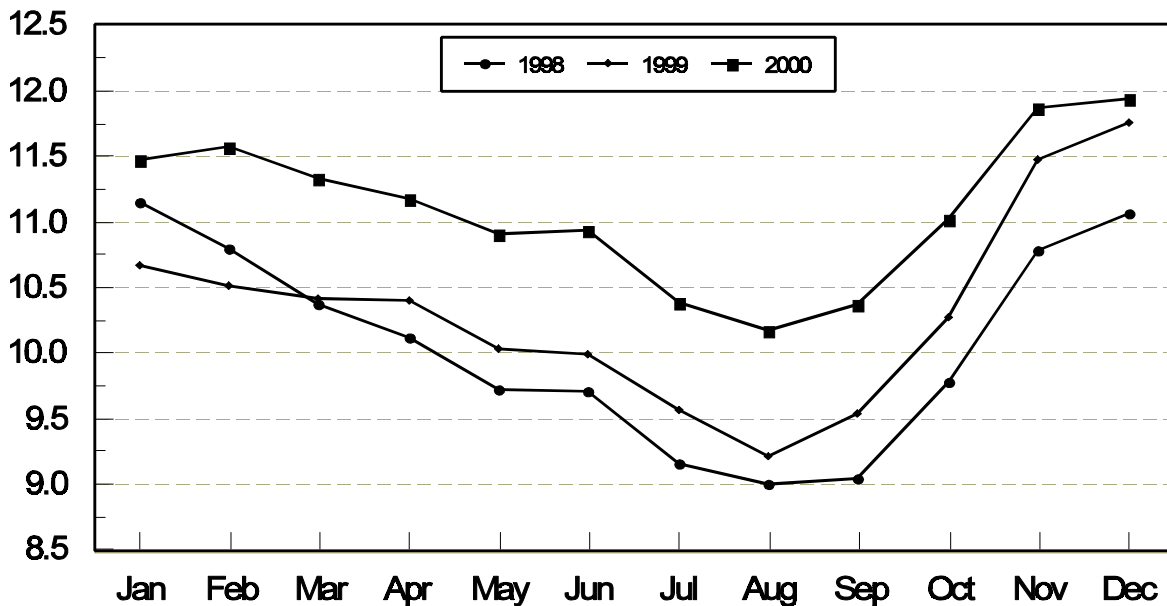
**Cattle on Feed: Number on Feed, 1,000+ Capacity Feedlots,  
by Month, State, and United States 1999-2000 <sup>1</sup>**

State	Dec 1, 1999	Nov 1, 2000	Dec 1, 2000		
			Number	as % of 1999	as % of Nov
	<i>1,000 Head</i>	<i>1,000 Head</i>	<i>1,000 Head</i>	<i>Percent</i>	<i>Percent</i>
AZ	265	292	298	112	102
CA	405	440	450	111	102
CO	1,220	1,250	1,230	101	98
ID	320	325	325	102	100
IA	370	380	395	107	104
KS	2,400	2,420	2,460	103	102
NE	2,380	2,380	2,410	101	101
NM	109	109	113	104	104
OK	440	410	415	94	101
SD	186	180	200	108	111
TX	2,980	3,030	2,970	100	98
WA	241	243	247	102	102
Oth Sts	445	405	435	98	107
US	11,761	11,864	11,948	102	101

<sup>1</sup> Cattle and calves on feed are animals for slaughter market being fed a ration of grain or other concentrates and are expected to produce a carcass that will grade select or better.

**United States Cattle on Feed  
1,000+ Capacity Feedlots**

Million Head



**Cattle on Feed: Number Placed on Feed, 1,000+ Capacity Feedlots,  
by Month, State, and United States 1999-2000**

State	During Nov 1999	During Oct 2000	During Nov 2000		
			Number	as % of 1999	as % of Oct
	<i>1,000 Head</i>	<i>1,000 Head</i>	<i>1,000 Head</i>	<i>Percent</i>	<i>Percent</i>
AZ	48	42	39	81	93
CA	66	76	69	105	91
CO	190	290	180	95	62
ID	66	79	64	97	81
IA	74	99	70	95	71
KS	430	550	470	109	85
NE	490	660	410	84	62
NM	17	27	20	118	74
OK	75	88	70	93	80
SD	51	70	47	92	67
TX	525	670	440	84	66
WA	44	59	53	120	90
Oth Sts	94	119	82	87	69
US	2,170	2,829	2,014	93	71

**Cattle on Feed: Number Placed on Feed by Weight Group, 1,000+ Capacity  
Feedlots, by Month, State, and United States, 1999-2000**

State	During November									
	Under 600		600-699		700-799		800 Plus		Total	
	1999	2000	1999	2000	1999	2000	1999	2000	1999	2000
	<i>1,000 Head</i>	<i>1,000 Head</i>	<i>1,000 Head</i>	<i>1,000 Head</i>	<i>1,000 Head</i>	<i>1,000 Head</i>	<i>1,000 Head</i>	<i>1,000 Head</i>	<i>1,000 Head</i>	<i>1,000 Head</i>
CO	51	62	46	45	58	45	35	28	190	180
KS	135	180	135	135	100	95	60	60	430	470
NE	155	120	166	120	83	95	86	75	490	410
TX	200	180	195	140	95	95	35	25	525	440
Oth Sts	225	215	115	119	80	75	115	105	535	514
US	766	757	657	559	416	405	331	293	2,170	2,014
	During October									
	Under 600		600-699		700-799		800 Plus		Total	
	1999	2000	1999	2000	1999	2000	1999	2000	1999	2000
	<i>1,000 Head</i>	<i>1,000 Head</i>	<i>1,000 Head</i>	<i>1,000 Head</i>	<i>1,000 Head</i>	<i>1,000 Head</i>	<i>1,000 Head</i>	<i>1,000 Head</i>	<i>1,000 Head</i>	<i>1,000 Head</i>
CO	92	95	64	70	98	70	106	55	360	290
KS	160	210	150	130	160	140	100	70	570	550
NE	215	226	183	200	125	92	167	142	690	660
TX	290	235	255	240	195	135	70	60	810	670
Oth Sts	270	300	150	115	114	94	150	150	684	659
US	1,027	1,066	802	755	692	531	593	477	3,114	2,829

**Cattle on Feed: Number Marketed, 1,000+ Capacity Feedlots,  
by Month, State, and United States 1999-2000**

State	During Nov 1999	During Oct 2000	During Nov 2000		
			Number	as % of 1999	as % of Oct
	<i>1,000 Head</i>	<i>1,000 Head</i>	<i>1,000 Head</i>	<i>Percent</i>	<i>Percent</i>
AZ	19	21	30	158	143
CA	48	49	49	102	100
CO	180	205	190	106	93
ID	67	60	62	93	103
IA	48	57	54	113	95
KS	425	415	400	94	96
NE	350	370	365	104	99
NM	12	13	14	117	108
OK	63	74	60	95	81
SD	21	34	26	124	76
TX	460	530	480	104	91
WA	56	39	47	84	121
Oth Sts	52	48	48	92	100
US	1,801	1,915	1,825	101	95

**Cattle on Feed: Other Disappearance, 1,000+ Capacity Feedlots,  
by Month, State, and United States 1999-2000 <sup>1</sup>**

State	During Nov 1999	During Oct 2000	During Nov 2000		
			Number	as % of 1999	as % of Oct
	<i>1,000 Head</i>	<i>1,000 Head</i>	<i>1,000 Head</i>	<i>Percent</i>	<i>Percent</i>
AZ	3	1	3	100	300
CA	8	7	10	125	143
CO	10	5	10	100	200
ID	4	4	2	50	50
IA	1	2	1	100	50
KS	15	15	30	200	200
NE	10	10	15	150	150
NM	3	1	2	67	200
OK	7	4	5	71	125
SD	1	1	1	100	100
TX	15	10	20	133	200
WA	4	5	2	50	40
Oth Sts	2	1	4	200	400
US	83	66	105	127	159

<sup>1</sup> Includes death loss, movement from feedlots to pasture, and shipments to other feedlots for further feeding.

## Terms and Definitions of Cattle on Feed Estimates

**Cattle on feed** are animals being fed a ration of grain, silage, hay and/or protein supplement for slaughter market that are expected to produce a carcass that will grade select or better. It excludes cattle being "backgrounded only" for later sale as feeders or later placement in another feedlot.

**Placements** are cattle put into a feedlot, fed a ration which will produce a carcass that will grade select or better, and are intended for the slaughter market.

**Marketings** are cattle shipped out of feedlots to a slaughter market.

**Other disappearance** includes death loss, movement from feedlots to pasture, and shipments to other feedlots for further feeding.

## Reliability of Cattle on Feed Estimates

**Survey Procedures:** During January and July all known feedlots in the U.S. with capacity of 1,000 or more head are surveyed to provide data for cattle on feed estimates. During the other months, all known feedlots from 17 States are surveyed. The 17 States account for 98 percent of the cattle on feed in feedlots with capacity of 1,000 or more head.

**Estimating Procedures:** These cattle on feed estimates were prepared by the Agricultural Statistics Board after reviewing recommendations and analysis submitted by each State office. Regional and State survey data were reviewed for reasonableness with each other and with estimates from the previous month when setting the current estimates.

**Revision Policy:** Revisions to previous estimates are made to improve month to month relationships. Estimates for the previous month are subject to revision in all States each month when current estimates are made. In February, all monthly estimates for the previous year, and the number of feedlots and annual marketings from two years ago are reviewed and subject to revisions. The reviews are primarily based on slaughter data, state check-off or brand data, and any other data that may have been received after the original estimate was made. Estimates will also be reviewed after data from the Census of Agriculture are available. No revisions will be made after that date and estimates become final.

**Reliability:** Since all 1000+ capacity cattle on feed operators in every State are not included in the monthly survey, survey estimates are subject to sampling variability. Survey results are also subject to non-sampling errors such as omissions, duplications, and mistakes in reporting, recording, and processing the data. The effects of these errors cannot be measured directly. They are minimized through rigid quality controls in the data collection process and through a careful review of all reported data for consistency and reasonableness.

The next "Cattle on Feed" report will be released at 3 p.m. on January 19, 2001.

The United States Department of Agriculture (USDA) prohibits discrimination in all its programs on the basis of race, color, national origin, gender, religion, age, disability, political beliefs, sexual orientation, and marital or family status. (Not all prohibited bases apply to all programs.) Persons with disabilities who require alternative means for communication of program information (braille, large print, audiotape, etc.) should contact the USDA's TARGET Center at 202-720-2600 (voice and TDD).

To file a complaint of discrimination, write USDA, Director, Office of Civil Rights, Room 326-W, Whitten Building, 14th and Independence Avenue, SW, Washington, D.C., 20250-9410, or call 202-720-5964 (voice or TDD). USDA is an equal opportunity provider and employer.

## ACCESS TO REPORTS!!

---

For your convenience, there are several ways to obtain NASS reports, data products, and services:

### INTERNET ACCESS

All NASS reports are available free of charge on the worldwide Internet. For access, connect to the Internet and go to the NASS Home Page at: <http://www.usda.gov/nass/>. Select "Today's Reports" or Publications and then Reports by Calendar or Publications and then Search, by Title or Subject.

### E-MAIL SUBSCRIPTION

There are two options for subscribing via e-mail. All NASS reports are available by subscription free of charge direct to your e-mail address. 1) Starting with the NASS Home Page at <http://www.usda.gov/nass/>, click on **Publications**, then click on the **Subscribe by E-mail** button which takes you to the page describing e-mail delivery of reports. Finally, click on **Go to the Subscription Page** and follow the instructions. 2) If you do NOT have Internet access, send an e-mail message to: [usda-reports@usda.mannlib.cornell.edu](mailto:usda-reports@usda.mannlib.cornell.edu). In the body of the message type the word: **list**.

### AUTOFAX ACCESS

NASSFax service is available for some reports from your fax machine. Please call 202-720-2000, using the handset attached to your fax. Respond to the voice prompts. Document 0411 is a list of available reports.

-----

### PRINTED REPORTS OR DATA PRODUCTS

CALL OUR TOLL-FREE ORDER DESK: 800-999-6779 (U.S. and Canada)  
Other areas, please call 703-834-0125 FAX: 703-834-0110  
(Visa, MasterCard, check, or money order acceptable for payment.)

-----

### ASSISTANCE

For **assistance** with general agricultural statistics or further information about NASS or its products or services, contact the **Agricultural Statistics Hotline** at **800-727-9540**, 7:30 a.m. to 4:00 p.m. ET, or e-mail: [nass@nass.usda.gov](mailto:nass@nass.usda.gov).