



# Cattle on Feed

---

Released January 19, 2001, by the National Agricultural Statistics Service (NASS), Agricultural Statistics Board, U.S. Department of Agriculture. For information on "Cattle on Feed" call Greg Thessen at (202) 720-3040, office hours 7:30 a.m. to 4:00 p.m. ET.

## U.S. Cattle on Feed Up 3 Percent

**Cattle and calves on feed** for slaughter market in the United States for feedlots with capacity of 1,000 or more head totaled 11.8 million head on January 1, 2001. The inventory was 3 percent above January 1, 2000 and 11 percent above January 1, 1999. The inventory included 7.02 million steers and steer calves, up 3 percent from the previous year. This group accounted for 59 percent of the total inventory. Heifers and heifer calves accounted for 4.70 million head, up 3 percent from January 1, 2000.

**Placements** in feedlots during December totaled 1.70 million, 3 percent above 1999 and 12 percent above 1998. Net placements were 1.60 million. During December, placements of cattle and calves weighing less than 600 pounds were 504,000, 600-699 pounds were 516,000, 700-799 pounds were 406,000, and 800 pounds and greater were 273,000.

**Marketings** of fed cattle during December totaled 1.75 million, 5 percent below 1999 and 4 percent below 1998. December 2000 had two less slaughter days than December 1999 which limited slaughter and affected the year-to-year relationship for marketings.

**Other disappearance** totaled 95,000 during December, 6 percent above 1999 and 12 percent above 1998.

## Cattle on Feed in Historic 7 States Up 3 Percent

**Cattle on feed** January 1, 2001, in the historic 7 States for feedlots with capacity of 1,000 or more head totaled 10.1 million, up 3 percent from the previous year and 12 percent above January 1, 1999. The inventory included 5.94 million steers and steer calves, up 3 percent from the previous year. This group accounted for 59 percent of the total inventory. Heifers and heifer calves accounted for 4.08 million head, up 4 percent from January 1, 2000.

**Placements** in feedlots during December totaled 1.44 million, 2 percent above 1999 and 15 percent above 1998.

**Marketings** during December totaled 1.50 million, 6 percent below 1999 and 4 percent below 1998. December 2000 had two less slaughter days than December 1999 which limited slaughter and affected the year-to-year relationship for marketings.

**Other disappearance** during December was 77,000 head, up 3 percent from 1999 and 12 percent above 1998.

**Cattle on Feed: Number on Feed, Placements, Marketings, and  
Other Disappearance, 1,000+ Capacity Feedlots,  
United States, January 1, 1999-2001**

Item	Number			2001 as % of	
	1999	2000	2001	1999	2000
	<i>1,000 Head</i>	<i>1,000 Head</i>	<i>1,000 Head</i>	<i>Percent</i>	<i>Percent</i>
On Feed Dec 1 <sup>1</sup>	11,063	11,761	11,948	108	102
Placed on Feed During Dec	1,512	1,646	1,699	112	103
Fed Cattle Marketed During Dec	1,823	1,842	1,754	96	95
Other Disappearance During Dec <sup>2</sup>	85	90	95	112	106
On Feed Jan 1 <sup>1</sup>	10,667	11,475	11,798	111	103

<sup>1</sup> Cattle and calves on feed are animals for slaughter market being fed a ration of grain or other concentrates and are expected to produce a carcass that will grade select or better.

<sup>2</sup> Includes death loss, movement from feedlots to pasture, and shipments to other feedlots for further feeding.

**Cattle on Feed: Number on Feed, Placements, Marketings, and  
Other Disappearance, 1,000+ Capacity Feedlots,  
United States, December 1, 1998-2000**

Item	Number			2000 as % of	
	1998	1999	2000	1998	1999
	<i>1,000 Head</i>	<i>1,000 Head</i>	<i>1,000 Head</i>	<i>Percent</i>	<i>Percent</i>
On Feed Nov 1 <sup>1</sup>	10,784	11,475	11,864	110	103
Placed on Feed During Nov	2,065	2,170	2,014	98	93
Fed Cattle Marketed During Nov	1,708	1,801	1,825	107	101
Other Disappearance During Nov <sup>2</sup>	78	83	105	135	127
On Feed Dec 1 <sup>1</sup>	11,063	11,761	11,948	108	102

<sup>1</sup> Cattle and calves on feed are animals for slaughter market being fed a ration of grain or other concentrates and are expected to produce a carcass that will grade select or better.

<sup>2</sup> Includes death loss, movement from feedlots to pasture, and shipments to other feedlots for further feeding.

**Cattle on Feed: Number on Feed by Class, 1,000+ Capacity Feedlots,  
United States, January 1, 1999-2001**

Item	Number			2001 as % of	
	1999	2000	2001	1999	2000
	<i>1,000 Head</i>	<i>1,000 Head</i>	<i>1,000 Head</i>	<i>Percent</i>	<i>Percent</i>
Class on Feed Jan 1					
Steers and Steer Calves	6,461	6,840	7,018	109	103
Heifers and Heifer Calves	4,153	4,574	4,696	113	103
Cows and Bulls	53	61	84	158	138

**Cattle on Feed: Number on Feed, Placements, Marketings, and  
Other Disappearance, 1,000+ Capacity Feedlots,  
7 States, January 1, 1999-2001 <sup>1</sup>**

Item	Number			2001 as % of	
	1999	2000	2001	1999	2000
	<i>1,000 Head</i>	<i>1,000 Head</i>	<i>1,000 Head</i>	<i>Percent</i>	<i>Percent</i>
On Feed Dec 1 <sup>2</sup>	9,404	10,020	10,213	109	102
Placed on Feed During Dec	1,250	1,408	1,440	115	102
Fed Cattle Marketed During Dec	1,564	1,601	1,500	96	94
Other Disappearance During Dec <sup>3</sup>	69	75	77	112	103
On Feed Jan 1 <sup>2</sup>	9,021	9,752	10,076	112	103

<sup>1</sup> The 7 States include AZ, CA, CO, IA, KS, NE, and TX.

<sup>2</sup> Cattle and calves on feed are animals for slaughter market being fed a ration of grain or other concentrates and are expected to produce a carcass that will grade select or better.

<sup>3</sup> Includes death loss, movement from feedlots to pasture, and shipments to other feedlots for further feeding.

**Cattle on Feed: Number on Feed, Placements, Marketings, and  
Other Disappearance, 1,000+ Capacity Feedlots,  
7 States, December 1, 1998-2000 <sup>1</sup>**

Item	Number			2000 as % of	
	1998	1999	2000	1998	1999
	<i>1,000 Head</i>	<i>1,000 Head</i>	<i>1,000 Head</i>	<i>Percent</i>	<i>Percent</i>
On Feed Nov 1 <sup>2</sup>	9,190	9,789	10,192	111	104
Placed on Feed During Nov	1,732	1,823	1,678	97	92
Fed Cattle Marketed During Nov	1,455	1,530	1,568	108	102
Other Disappearance During Nov <sup>3</sup>	63	62	89	141	144
On Feed Dec 1 <sup>2</sup>	9,404	10,020	10,213	109	102

<sup>1</sup> The 7 States include AZ, CA, CO, IA, KS, NE, and TX.

<sup>2</sup> Cattle and calves on feed are animals for slaughter market being fed a ration of grain or other concentrates and are expected to produce a carcass that will grade select or better.

<sup>3</sup> Includes death loss, movement from feedlots to pasture, and shipments to other feedlots for further feeding.

**Cattle on Feed: Number on Feed by Class, 1,000+ Capacity Feedlots,  
7 States, January 1, 1999-2001 <sup>1</sup>**

Item	Number			2001 as % of	
	1999	2000	2001	1999	2000
	<i>1,000 Head</i>	<i>1,000 Head</i>	<i>1,000 Head</i>	<i>Percent</i>	<i>Percent</i>
Class on Feed Jan 1					
Steers and Steer Calves	5,432	5,768	5,936	109	103
Heifers and Heifer Calves	3,552	3,942	4,081	115	104
Cows and Bulls	37	42	59	159	140

<sup>1</sup> The 7 States include AZ, CA, CO, IA, KS, NE, and TX.

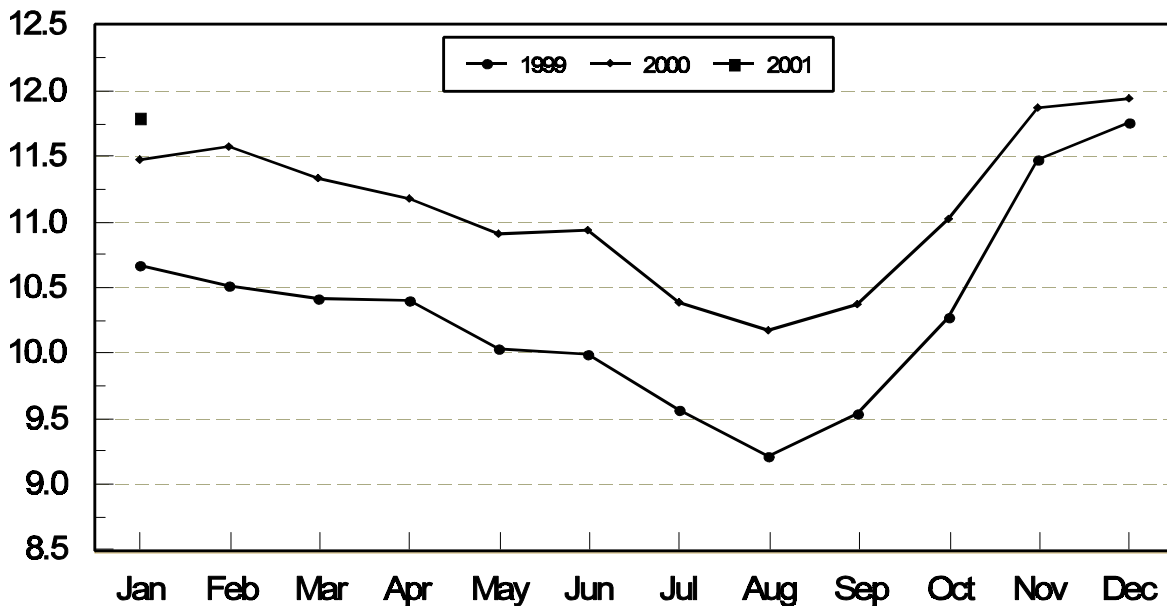
**Cattle on Feed: Number on Feed, 1,000+ Capacity Feedlots,  
by Month, State, and United States 2000-2001 <sup>1</sup>**

State	Jan 1, 2000	Dec 1, 2000	Jan 1, 2001		
			Number	as % of 2000	as % of Dec
	<i>1,000 Head</i>	<i>1,000 Head</i>	<i>1,000 Head</i>	<i>Percent</i>	<i>Percent</i>
AZ	272	298	301	111	101
CA	415	450	450	108	100
CO	1,180	1,230	1,210	103	98
ID	310	325	320	103	98
IA	375	395	385	103	97
KS	2,310	2,460	2,400	104	98
NE	2,300	2,410	2,400	104	100
NM	116	113	115	99	102
OK	430	415	410	95	99
SD	194	200	202	104	101
TX	2,900	2,970	2,930	101	99
WA	228	247	250	110	101
Oth Sts	445	435	425	96	98
US	11,475	11,948	11,798	103	99

<sup>1</sup> Cattle and calves on feed are animals for slaughter market being fed a ration of grain or other concentrates and are expected to produce a carcass that will grade select or better.

**United States Cattle on Feed  
1,000+ Capacity Feedlots**

Million Head



**Cattle on Feed: Number Placed on Feed, 1,000+ Capacity Feedlots,  
by Month, State, and United States 1999-2000**

State	During Dec 1999	During Nov 2000	During Dec 2000		
			Number	as % of 1999	as % of Nov
	<i>1,000 Head</i>	<i>1,000 Head</i>	<i>1,000 Head</i>	<i>Percent</i>	<i>Percent</i>
AZ	36	39	30	83	77
CA	67	69	62	93	90
CO	160	180	170	106	94
ID	50	64	58	116	91
IA	45	70	38	84	54
KS	400	470	420	105	89
NE	340	410	340	100	83
NM	15	20	16	107	80
OK	53	70	57	108	81
SD	31	47	31	100	66
TX	360	440	380	106	86
WA	38	53	53	139	100
Oth Sts	51	82	44	86	54
US	1,646	2,014	1,699	103	84

**Cattle on Feed: Number Placed on Feed by Weight Group, 1,000+ Capacity  
Feedlots, by Month, State, and United States, 1999-2000**

State	During December									
	Under 600		600-699		700-799		800 Plus		Total	
	1999	2000	1999	2000	1999	2000	1999	2000	1999	2000
	<i>1,000 Head</i>	<i>1,000 Head</i>	<i>1,000 Head</i>	<i>1,000 Head</i>	<i>1,000 Head</i>	<i>1,000 Head</i>	<i>1,000 Head</i>	<i>1,000 Head</i>	<i>1,000 Head</i>	<i>1,000 Head</i>
CO	34	35	47	47	42	65	37	23	160	170
KS	95	105	135	160	120	100	50	55	400	420
NE	51	59	106	104	109	87	74	90	340	340
TX	125	145	130	120	80	90	25	25	360	380
Oth Sts	160	160	80	85	71	64	75	80	386	389
US	465	504	498	516	422	406	261	273	1,646	1,699
State	During November									
	Under 600		600-699		700-799		800 Plus		Total	
	1999	2000	1999	2000	1999	2000	1999	2000	1999	2000
	<i>1,000 Head</i>	<i>1,000 Head</i>	<i>1,000 Head</i>	<i>1,000 Head</i>	<i>1,000 Head</i>	<i>1,000 Head</i>	<i>1,000 Head</i>	<i>1,000 Head</i>	<i>1,000 Head</i>	<i>1,000 Head</i>
CO	51	62	46	45	58	45	35	28	190	180
KS	135	180	135	135	100	95	60	60	430	470
NE	155	120	166	120	83	95	86	75	490	410
TX	200	180	195	140	95	95	35	25	525	440
Oth Sts	225	215	115	119	80	75	115	105	535	514
US	766	757	657	559	416	405	331	293	2,170	2,014

**Cattle on Feed: Number Marketed, 1,000+ Capacity Feedlots,  
by Month, State, and United States 1999-2000**

State	During Dec 1999	During Nov 2000	During Dec 2000		
			Number	as % of 1999	as % of Nov
	<i>1,000 Head</i>	<i>1,000 Head</i>	<i>1,000 Head</i>	<i>Percent</i>	<i>Percent</i>
AZ	25	30	23	92	77
CA	47	49	52	111	106
CO	190	190	180	95	95
ID	59	62	60	102	97
IA	39	54	45	115	83
KS	480	400	460	96	115
NE	400	365	340	85	93
NM	5	14	13	260	93
OK	60	60	59	98	98
SD	22	26	27	123	104
TX	420	480	400	95	83
WA	48	47	48	100	102
Oth Sts	47	48	47	100	98
US	1,842	1,825	1,754	95	96

**Cattle on Feed: Other Disappearance, 1,000+ Capacity Feedlots,  
by Month, State, and United States 1999-2000 <sup>1</sup>**

State	During Dec 1999	During Nov 2000	During Dec 2000		
			Number	as % of 1999	as % of Nov
	<i>1,000 Head</i>	<i>1,000 Head</i>	<i>1,000 Head</i>	<i>Percent</i>	<i>Percent</i>
AZ	4	3	4	100	133
CA	10	10	10	100	100
CO	10	10	10	100	100
ID	1	2	3	300	150
IA	1	1	3	300	300
KS	10	30	20	200	67
NE	20	15	10	50	67
NM	3	2	1	33	50
OK	3	5	3	100	60
SD	1	1	2	200	200
TX	20	20	20	100	100
WA	3	2	2	67	100
Oth Sts	4	4	7	175	175
US	90	105	95	106	90

<sup>1</sup> Includes death loss, movement from feedlots to pasture, and shipments to other feedlots for further feeding.

**Cattle on Feed: Number on Feed by Class, 1,000+ Capacity Feedlots,  
by Quarter, State, and United States, 2000-2001**

State	Steers & Steer Calves			Heifers & Heifer Calves			Cows and Bulls		
	Jan 1, 2000	Oct 1, 2000	Jan 1, 2001	Jan 1, 2000	Oct 1, 2000	Jan 1, 2001	Jan 1, 2000	Oct 1, 2000	Jan 1, 2001
	<i>1,000 Head</i>	<i>1,000 Head</i>	<i>1,000 Head</i>	<i>1,000 Head</i>	<i>1,000 Head</i>	<i>1,000 Head</i>	<i>1,000 Head</i>	<i>1,000 Head</i>	<i>1,000 Head</i>
AZ	252	259	286	20	13	15	0	0	0
CA	376	375	400	38	45	49	1	0	1
CO	650	670	670	520	495	530	10	5	10
ID	212	220	220	98	89	97	0	1	3
IA	240	205	250	135	135	135	0	0	0
KS	1,360	1,280	1,320	940	1,020	1,078	10	0	2
NE	1,340	1,195	1,380	940	870	975	20	35	45
NM	55	41	51	61	55	64	0	0	0
OK	265	240	245	164	157	162	1	3	3
SD	103	87	114	83	55	77	8	3	11
TX	1,550	1,600	1,630	1,349	1,299	1,299	1	1	1
WA	137	150	162	91	78	88	0	0	0
Oth Sts	300	240	290	135	90	127	10	5	8
US	6,840	6,562	7,018	4,574	4,401	4,696	61	53	84

## Terms and Definitions of Cattle on Feed Estimates

**Cattle on feed** are animals being fed a ration of grain, silage, hay and/or protein supplement for slaughter market that are expected to produce a carcass that will grade select or better. It excludes cattle being "backgrounded only" for later sale as feeders or later placement in another feedlot.

**Placements** are cattle put into a feedlot, fed a ration which will produce a carcass that will grade select or better, and are intended for the slaughter market.

**Marketings** are cattle shipped out of feedlots to a slaughter market.

**Other disappearance** includes death loss, movement from feedlots to pasture, and shipments to other feedlots for further feeding.

## Reliability of Cattle on Feed Estimates

**Survey Procedures:** During January and July all known feedlots in the U.S. with capacity of 1,000 or more head are surveyed to provide data for cattle on feed estimates. During the other months, all known feedlots from 17 States are surveyed. The 17 States account for 98 percent of the cattle on feed in feedlots with capacity of 1,000 or more head.

**Estimating Procedures:** These cattle on feed estimates were prepared by the Agricultural Statistics Board after reviewing recommendations and analysis submitted by each State office. Regional and State survey data were reviewed for reasonableness with each other and with estimates from the previous month when setting the current estimates.

**Revision Policy:** Revisions to previous estimates are made to improve month to month relationships. Estimates for the previous month are subject to revision in all States each month when current estimates are made. In February, all monthly estimates for the previous year, and the number of feedlots and annual marketings from two years ago are reviewed and subject to revisions. The reviews are primarily based on slaughter data, state check-off or brand data, and any other data that may have been received after the original estimate was made. Estimates will also be reviewed after data from the Census of Agriculture are available. No revisions will be made after that date and estimates become final.

**Reliability:** Since all 1000+ capacity cattle on feed operators in every State are not included in the monthly survey, survey estimates are subject to sampling variability. Survey results are also subject to non-sampling errors such as omissions, duplications, and mistakes in reporting, recording, and processing the data. The effects of these errors cannot be measured directly. They are minimized through rigid quality controls in the data collection process and through a careful review of all reported data for consistency and reasonableness.



The next "Cattle on Feed" report will be released at 3 p.m. on February 16, 2001.

The United States Department of Agriculture (USDA) prohibits discrimination in all its programs on the basis of race, color, national origin, gender, religion, age, disability, political beliefs, sexual orientation, and marital or family status. (Not all prohibited bases apply to all programs.) Persons with disabilities who require alternative means for communication of program information (braille, large print, audiotape, etc.) should contact the USDA's TARGET Center at 202-720-2600 (voice and TDD).

To file a complaint of discrimination, write USDA, Director, Office of Civil Rights, Room 326-W, Whitten Building, 14th and Independence Avenue, SW, Washington, D.C., 20250-9410, or call 202-720-5964 (voice or TDD). USDA is an equal opportunity provider and employer.

## ACCESS TO REPORTS!!

---

For your convenience, there are several ways to obtain NASS reports, data products, and services:

### INTERNET ACCESS

All NASS reports are available free of charge on the worldwide Internet. For access, connect to the Internet and go to the NASS Home Page at: <http://www.usda.gov/nass/>. Select "Today's Reports" or Publications and then Reports by Calendar or Publications and then Search, by Title or Subject.

### E-MAIL SUBSCRIPTION

There are two options for subscribing via e-mail. All NASS reports are available by subscription free of charge direct to your e-mail address. 1) Starting with the NASS Home Page at <http://www.usda.gov/nass/>, click on **Publications**, then click on the **Subscribe by E-mail** button which takes you to the page describing e-mail delivery of reports. Finally, click on **Go to the Subscription Page** and follow the instructions. 2) If you do NOT have Internet access, send an e-mail message to: [usda-reports@usda.mannlib.cornell.edu](mailto:usda-reports@usda.mannlib.cornell.edu). In the body of the message type the word: **list**.

### AUTOFAX ACCESS

NASSFax service is available for some reports from your fax machine. Please call 202-720-2000, using the handset attached to your fax. Respond to the voice prompts. Document 0411 is a list of available reports.

-----

### PRINTED REPORTS OR DATA PRODUCTS

CALL OUR TOLL-FREE ORDER DESK: 800-999-6779 (U.S. and Canada)  
Other areas, please call 703-834-0125 FAX: 703-834-0110  
(Visa, MasterCard, check, or money order acceptable for payment.)

-----

### ASSISTANCE

For **assistance** with general agricultural statistics or further information about NASS or its products or services, contact the **Agricultural Statistics Hotline** at **800-727-9540**, 7:30 a.m. to 4:00 p.m. ET, or e-mail: [nass@nass.usda.gov](mailto:nass@nass.usda.gov).

---

# Agricultural Outlook Forum 2001

---



**February 22-23, 2001  
Arlington, Virginia**

[www.usda.gov/oce](http://www.usda.gov/oce)  
[agforum@oce.usda.gov](mailto:agforum@oce.usda.gov)  
(202) 720-3050

**USDA's 77th outlook conference** will offer timely forecasts of farm prospects and insight on developments affecting the farm economy. The program will feature top business leaders and officials. Networking opportunities abound at this popular event, attended by over 1,300 people last February.

**Policy Debate.** Future farm policy will be a hot topic during 2001. The Forum will open with high-level panels on the next farm bill and world trade talks. Focus sessions during the two-day program will preview key policy issues on next year's agenda.

**Farm Prospects.** Attendees will hear leading analysts discuss the 2001 commodity outlook and industry trends, and receive USDA's latest 10-year projections.

**Act Now.** Get registration details and program updates at the Forum website. Can't attend in person? Sign up now to get speeches by e-mail after the Forum, or download them from the website.