



Cattle on Feed

Released March 16, 2001, by the National Agricultural Statistics Service (NASS), Agricultural Statistics Board, U.S. Department of Agriculture. For information on "Cattle on Feed" call Steve Anderson at (202) 720-3040, office hours 7:30 a.m. to 4:00 p.m. ET.

U.S. Cattle on Feed Up 3 Percent

Cattle and calves on feed for slaughter market in the United States for feedlots with capacity of 1,000 or more head totaled 11.70 million head on March 1, 2001. The inventory was up 3 percent from the 11.33 million head on March 1, 2000 and 12 percent above March 1, 1999.

Placements in feedlots during February totaled 1.58 million, 16 percent below 2000 and 13 percent below 1999. Net placements were 1.50 million. During February, placements of cattle and calves weighing less than 600 pounds were 336,000, 600-699 pounds were 402,000, 700-799 pounds were 517,000, and 800 pounds and greater were 325,000.

Marketings of fed cattle during February totaled 1.75 million, 15 percent below 2000 and 5 percent below 1999.

Other disappearance totaled 81,000 during February, 4 percent above 2000 and 25 percent above 1999.

Cattle on Feed in Historic 7 States Up 3 Percent

Cattle on feed March 1, 2001, in the historic 7 States for feedlots with capacity of 1,000 or more head totaled 10.01 million, up 3 percent from the previous year and 13 percent above March 1, 1999.

Placements in feedlots during February totaled 1.33 million, 17 percent below 2000 and 15 percent below 1999.

Marketings during February totaled 1.48 million, 16 percent below 2000 and 5 percent below 1999.

Other disappearance during February was 64,000 head, 36 percent above 2000 and 52 percent above 1999.

Special Note

The year-to-year relationship for placements, marketings, and other disappearance was affected by an extra day in February 2000 due to leap year. This extra day overstated the percent change from February 2000. For example, adjusting placements to an average daily basis for the United States and historic 7 States would indicate February placements 13 and 14 percent below 2000, respectively.

**Cattle on Feed: Number on Feed, Placements, Marketings, and
Other Disappearance, 1,000+ Capacity Feedlots,
United States, March 1, 1999-2001**

Item	Number			2001 as % of	
	1999	2000	2001	1999	2000
	<i>1,000 Head</i>	<i>1,000 Head</i>	<i>1,000 Head</i>	<i>Percent</i>	<i>Percent</i>
On Feed Feb 1 ¹	10,509	11,574	11,941	114	103
Placed on Feed During Feb	1,808	1,880	1,580	87	84
Fed Cattle Marketed During Feb	1,832	2,046	1,745	95	85
Other Disappearance During Feb ²	65	78	81	125	104
On Feed Mar 1 ¹	10,420	11,330	11,695	112	103

¹ Cattle and calves on feed are animals for slaughter market being fed a ration of grain or other concentrates and are expected to produce a carcass that will grade select or better.

² Includes death loss, movement from feedlots to pasture, and shipments to other feedlots for further feeding.

**Cattle on Feed: Number on Feed, Placements, Marketings, and
Other Disappearance, 1,000+ Capacity Feedlots,
United States, February 1, 1999-2001**

Item	Number			2001 as % of	
	1999	2000	2001	1999	2000
	<i>1,000 Head</i>	<i>1,000 Head</i>	<i>1,000 Head</i>	<i>Percent</i>	<i>Percent</i>
On Feed Jan 1 ¹	10,667	11,475	11,798	111	103
Placed on Feed During Jan	1,933	2,216	2,263	117	102
Fed Cattle Marketed During Jan	2,021	2,048	2,042	101	100
Other Disappearance During Jan ²	70	69	78	111	113
On Feed Feb 1 ¹	10,509	11,574	11,941	114	103

¹ Cattle and calves on feed are animals for slaughter market being fed a ration of grain or other concentrates and are expected to produce a carcass that will grade select or better.

² Includes death loss, movement from feedlots to pasture, and shipments to other feedlots for further feeding.

**Cattle on Feed: Number on Feed, Placements, Marketings, and
Other Disappearance, 1,000+ Capacity Feedlots,
7 States, March 1, 1999-2001 ¹**

Item	Number			2001 as % of	
	1999	2000	2001	1999	2000
	<i>1,000 Head</i>	<i>1,000 Head</i>	<i>1,000 Head</i>	<i>Percent</i>	<i>Percent</i>
On Feed Feb 1 ²	8,917	9,885	10,222	115	103
Placed on Feed During Feb	1,563	1,606	1,331	85	83
Fed Cattle Marketed During Feb	1,560	1,749	1,477	95	84
Other Disappearance During Feb ³	42	47	64	152	136
On Feed Mar 1 ²	8,878	9,695	10,012	113	103

¹ The 7 States include AZ, CA, CO, IA, KS, NE, and TX.

² Cattle and calves on feed are animals for slaughter market being fed a ration of grain or other concentrates and are expected to produce a carcass that will grade select or better.

³ Includes death loss, movement from feedlots to pasture, and shipments to other feedlots for further feeding.

**Cattle on Feed: Number on Feed, Placements, Marketings, and
Other Disappearance, 1,000+ Capacity Feedlots,
7 States, February 1, 1999-2001 ¹**

Item	Number			2001 as % of	
	1999	2000	2001	1999	2000
	<i>1,000 Head</i>	<i>1,000 Head</i>	<i>1,000 Head</i>	<i>Percent</i>	<i>Percent</i>
On Feed Jan 1 ²	9,021	9,752	10,076	112	103
Placed on Feed During Jan	1,681	1,931	1,965	117	102
Fed Cattle Marketed During Jan	1,738	1,747	1,751	101	100
Other Disappearance During Jan ³	47	51	68	145	133
On Feed Feb 1 ²	8,917	9,885	10,222	115	103

¹ The 7 States include AZ, CA, CO, IA, KS, NE, and TX.

² Cattle and calves on feed are animals for slaughter market being fed a ration of grain or other concentrates and are expected to produce a carcass that will grade select or better.

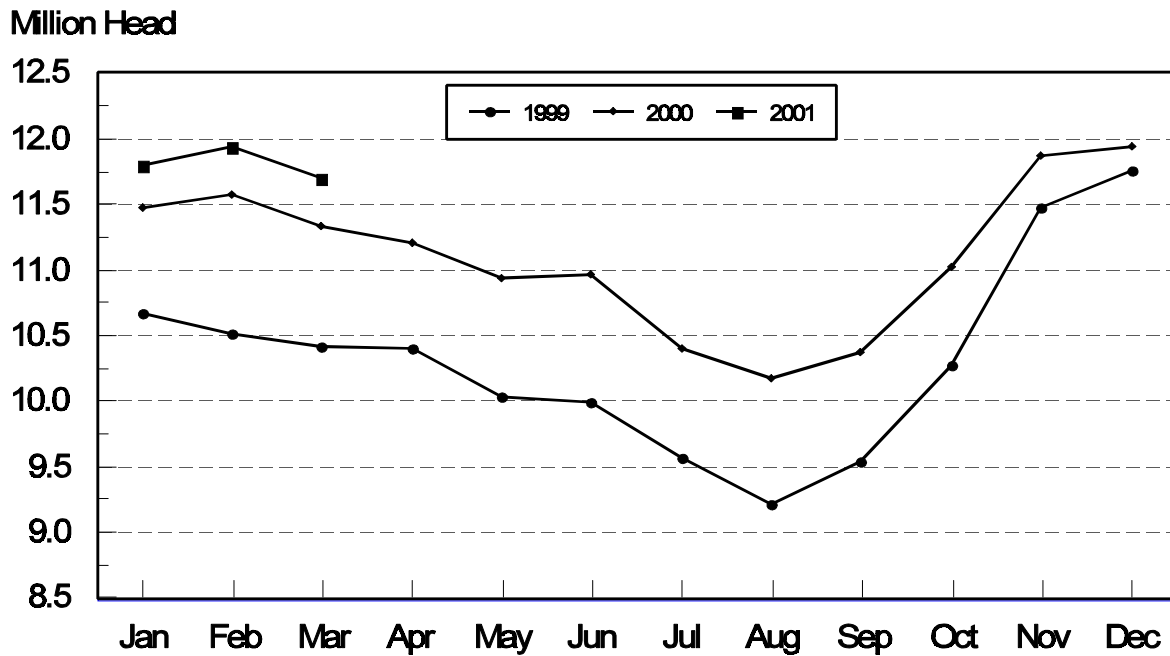
³ Includes death loss, movement from feedlots to pasture, and shipments to other feedlots for further feeding.

**Cattle on Feed: Number on Feed, 1,000+ Capacity Feedlots,
by Month, State, and United States 2000-2001¹**

State	Mar 1, 2000	Feb 1, 2001	Mar 1, 2001		
			Number	as % of 2000	as % of Feb
	<i>1,000 Head</i>	<i>1,000 Head</i>	<i>1,000 Head</i>	<i>Percent</i>	<i>Percent</i>
AZ	275	302	307	112	102
CA	405	445	440	109	99
CO	1,180	1,230	1,190	101	97
ID	305	325	320	105	98
IA	375	385	385	103	100
KS	2,320	2,500	2,470	106	99
NE	2,310	2,430	2,380	103	98
NM	105	116	111	106	96
OK	400	410	390	98	95
SD	200	205	207	104	101
TX	2,830	2,930	2,840	100	97
WA	210	243	245	117	101
Oth Sts	415	420	410	99	98
US	11,330	11,941	11,695	103	98

¹ Cattle and calves on feed are animals for slaughter market being fed a ration of grain or other concentrates and are expected to produce a carcass that will grade select or better.

**United States Cattle on Feed
1,000+ Capacity Feedlots**



**Cattle on Feed: Number Placed on Feed, 1,000+ Capacity Feedlots,
by Month, State, and United States 2000-2001**

State	During Feb 2000	During Jan 2001	During Feb 2001		
			Number	as % of 2000	as % of Jan
	<i>1,000 Head</i>	<i>1,000 Head</i>	<i>1,000 Head</i>	<i>Percent</i>	<i>Percent</i>
AZ	27	28	41	152	146
CA	50	60	55	110	92
CO	250	305	195	78	64
ID	70	71	59	84	83
IA	39	52	45	115	87
KS	420	580	335	80	58
NE	390	480	310	79	65
NM	10	11	5	50	45
OK	54	68	42	78	62
SD	37	35	35	95	100
TX	430	460	350	81	76
WA	50	55	52	104	95
Oth Sts	53	58	56	106	97
US	1,880	2,263	1,580	84	70

**Cattle on Feed: Number Placed on Feed by Weight Group, 1,000+ Capacity
Feedlots, by Month, State, and United States, 2000-2001**

State	During February									
	Under 600		600-699		700-799		800 Plus		Total	
	2000	2001	2000	2001	2000	2001	2000	2001	2000	2001
	<i>1,000 Head</i>	<i>1,000 Head</i>	<i>1,000 Head</i>	<i>1,000 Head</i>	<i>1,000 Head</i>	<i>1,000 Head</i>	<i>1,000 Head</i>	<i>1,000 Head</i>	<i>1,000 Head</i>	<i>1,000 Head</i>
CO	36	36	58	40	88	74	68	45	250	195
KS	60	50	110	110	150	120	100	55	420	335
NE	40	25	103	82	138	118	109	85	390	310
TX	110	105	145	100	125	110	50	35	430	350
Oth Sts	105	120	60	70	95	95	130	105	390	390
US	351	336	476	402	596	517	457	325	1,880	1,580
	During January									
	Under 600		600-699		700-799		800 Plus		Total	
	2000	2001	2000	2001	2000	2001	2000	2001	2000	2001
	<i>1,000 Head</i>	<i>1,000 Head</i>	<i>1,000 Head</i>	<i>1,000 Head</i>	<i>1,000 Head</i>	<i>1,000 Head</i>	<i>1,000 Head</i>	<i>1,000 Head</i>	<i>1,000 Head</i>	<i>1,000 Head</i>
CO	45	45	65	91	117	120	63	49	290	305
KS	100	140	190	200	170	165	60	75	520	580
NE	64	39	170	170	157	156	109	115	500	480
TX	150	150	175	145	110	125	40	40	475	460
Oth Sts	130	125	91	110	100	98	110	105	431	438
US	489	499	691	716	654	664	382	384	2,216	2,263

**Cattle on Feed: Number Marketed, 1,000+ Capacity Feedlots,
by Month, State, and United States 2000-2001**

State	During Feb 2000	During Jan 2001	During Feb 2001		
			Number	as % of 2000	as % of Jan
	<i>1,000 Head</i>	<i>1,000 Head</i>	<i>1,000 Head</i>	<i>Percent</i>	<i>Percent</i>
AZ	24	25	28	117	112
CA	52	55	50	96	91
CO	265	275	225	85	82
ID	57	65	62	109	95
IA	48	51	44	92	86
KS	430	465	350	81	75
NE	440	430	350	80	81
NM	15	10	10	67	100
OK	69	65	58	84	89
SD	36	31	29	81	94
TX	490	450	430	88	96
WA	45	59	47	104	80
Oth Sts	75	61	62	83	102
US	2,046	2,042	1,745	85	85

**Cattle on Feed: Other Disappearance, 1,000+ Capacity Feedlots,
by Month, State, and United States 2000-2001 ¹**

State	During Feb 2000	During Jan 2001	During Feb 2001		
			Number	as % of 2000	as % of Jan
	<i>1,000 Head</i>	<i>1,000 Head</i>	<i>1,000 Head</i>	<i>Percent</i>	<i>Percent</i>
AZ	3	2	8	267	400
CA	8	10	10	125	100
CO	5	10	10	200	100
ID	8	1	2	25	200
IA	1	1	1	100	100
KS	10	15	15	150	100
NE	10	20	10	100	50
NM	3	0	0		
OK	5	3	4	80	133
SD	1	1	4	400	400
TX	10	10	10	100	100
WA	6	3	3	50	100
Oth Sts	8	2	4	50	200
US	78	78	81	104	104

¹ Includes death loss, movement from feedlots to pasture, and shipments to other feedlots for further feeding.

Terms and Definitions of Cattle on Feed Estimates

Cattle on feed are animals being fed a ration of grain, silage, hay and/or protein supplement for slaughter market that are expected to produce a carcass that will grade select or better. It excludes cattle being "backgrounded only" for later sale as feeders or later placement in another feedlot.

Placements are cattle put into a feedlot, fed a ration which will produce a carcass that will grade select or better, and are intended for the slaughter market.

Marketings are cattle shipped out of feedlots to a slaughter market.

Other disappearance includes death loss, movement from feedlots to pasture, and shipments to other feedlots for further feeding.

Reliability of Cattle on Feed Estimates

Survey Procedures: During January and July all known feedlots in the U.S. with capacity of 1,000 or more head are surveyed to provide data for cattle on feed estimates. During the other months, all known feedlots from 17 States are surveyed. The 17 States account for 98 percent of the cattle on feed.

Estimating Procedures: These cattle on feed estimates were prepared by the Agricultural Statistics Board after reviewing recommendations and analysis submitted by each State office. Regional and State survey data were reviewed for reasonableness with each other and with estimates from the previous month when setting the current estimates.

Revision Policy: Revisions to previous estimates are made to improve month to month relationships. Estimates for the previous month are subject to revision in all States each month when current estimates are made. In February, all monthly estimates for the previous year, and the number of feedlots and annual marketings from two years ago are reviewed and subject to revisions. The reviews are primarily based on slaughter data, state check-off or brand data, and any other data that may have been received after the original estimate was made. Estimates will also be reviewed after data from the Census of Agriculture are available. No revisions will be made after that date and estimates become final.

Reliability: Since all 1000+ capacity cattle on feed operators in every State are not included in the monthly survey, survey estimates are subject to sampling variability. Survey results are also subject to non-sampling errors such as omissions, duplications, and mistakes in reporting, recording, and processing the data. The effects of these errors cannot be measured directly. They are minimized through rigid quality controls in the data collection process and through a careful review of all reported data for consistency and reasonableness.

The next "Cattle on Feed" report will be released at 3 p.m. ET on April 20, 2001.

The United States Department of Agriculture (USDA) prohibits discrimination in all its programs on the basis of race, color, national origin, gender, religion, age, disability, political beliefs, sexual orientation, and marital or family status. (Not all prohibited bases apply to all programs.) Persons with disabilities who require alternative means for communication of program information (braille, large print, audiotape, etc.) should contact the USDA's TARGET Center at 202-720-2600 (voice and TDD).

To file a complaint of discrimination, write USDA, Director, Office of Civil Rights, Room 326-W, Whitten Building, 14th and Independence Avenue, SW, Washington, D.C., 20250-9410, or call 202-720-5964 (voice or TDD). USDA is an equal opportunity provider and employer.

ACCESS TO REPORTS!!

For your convenience, there are several ways to obtain NASS reports, data products, and services:

INTERNET ACCESS

All NASS reports are available free of charge on the worldwide Internet. For access, connect to the Internet and go to the NASS Home Page at: <http://www.usda.gov/nass/>. Select "Today's Reports" or Publications and then Reports by Calendar or Publications and then Search, by Title or Subject.

E-MAIL SUBSCRIPTION

There are two options for subscribing via e-mail. All NASS reports are available by subscription free of charge direct to your e-mail address. 1) Starting with the NASS Home Page at <http://www.usda.gov/nass/>, click on **Publications**, then click on the **Subscribe by E-mail** button which takes you to the page describing e-mail delivery of reports. Finally, click on **Go to the Subscription Page** and follow the instructions. 2) If you do NOT have Internet access, send an e-mail message to: usda-reports@usda.mannlib.cornell.edu. In the body of the message type the word: **list**.

AUTOFAX ACCESS

NASSFax service is available for some reports from your fax machine. Please call 202-720-2000, using the handset attached to your fax. Respond to the voice prompts. Document 0411 is a list of available reports.

PRINTED REPORTS OR DATA PRODUCTS

CALL OUR TOLL-FREE ORDER DESK: 800-999-6779 (U.S. and Canada)
Other areas, please call 703-834-0125 FAX: 703-834-0110
(Visa, MasterCard, check, or money order acceptable for payment.)

ASSISTANCE

For **assistance** with general agricultural statistics or further information about NASS or its products or services, contact the **Agricultural Statistics Hotline** at **800-727-9540**, 7:30 a.m. to 4:00 p.m. ET, or e-mail: nass@nass.usda.gov.