



Cattle on Feed

Released April 20, 2001, by the National Agricultural Statistics Service (NASS), Agricultural Statistics Board, U.S. Department of Agriculture. For information on "Cattle on Feed" call Steve Anderson at (202) 720-3040, office hours 7:30 a.m. to 4:00 p.m. ET.

U.S. Cattle on Feed Up 3 Percent

Cattle and calves on feed for slaughter market in the United States for feedlots with capacity of 1,000 or more head totaled 11.52 million head on April 1, 2001. The inventory was 3 percent above April 1, 2000 and 11 percent above April 1, 1999. The inventory included 6.96 million steers and steer calves, up 2 percent from the previous year. This group accounted for 60 percent of the total inventory. Heifers and heifer calves accounted for 4.49 million head, up 3 percent from 2000.

Placements in feedlots during March totaled 1.85 million, 9 percent below both 2000 and 1999. Net placements were 1.75 million. During March, placements of cattle and calves weighing less than 600 pounds were 330,000, 600-699 pounds were 416,000, 700-799 pounds were 618,000, and 800 pounds and greater were 488,000.

Marketings of fed cattle during March totaled 1.93 million, 6 percent below 2000 and 3 percent below 1999.

Other disappearance totaled 98,000 during March, 5 percent below 2000 but 38 percent above 1999.

Cattle on Feed in Historic 7 States Up 3 Percent

Cattle on feed April 1, 2001, in the historic 7 States for feedlots with capacity of 1,000 or more head totaled 9.86 million, up 3 percent from the previous year and 11 percent above April 1, 1999. The inventory included 5.89 million steers and steer calves, up 2 percent from the previous year. This group accounted for 60 percent of the total inventory. Heifers and heifer calves accounted for 3.91 million head, up 3 percent from 2000.

Placements in feedlots during March totaled 1.54 million, 11 percent below 2000 and 12 percent below 1999.

Marketings during March totaled 1.61 million, 9 percent below 2000 and 3 percent below 1999.

Other disappearance during March was 80,000 head, 8 percent above 2000 and 54 percent above 1999.

**Cattle on Feed: Number on Feed, Placements, Marketings, and
Other Disappearance, 1,000+ Capacity Feedlots,
United States, April 1, 1999-2001**

Item	Number			2001 as % of	
	1999	2000	2001	1999	2000
	<i>1,000 Head</i>	<i>1,000 Head</i>	<i>1,000 Head</i>	<i>Percent</i>	<i>Percent</i>
On Feed Mar 1 ¹	10,420	11,330	11,695	112	103
Placed on Feed During Mar	2,031	2,031	1,852	91	91
Fed Cattle Marketed During Mar	1,986	2,056	1,926	97	94
Other Disappearance During Mar ²	71	103	98	138	95
On Feed Apr 1 ¹	10,394	11,202	11,523	111	103

¹ Cattle and calves on feed are animals for slaughter market being fed a ration of grain or other concentrates and are expected to produce a carcass that will grade select or better.

² Includes death loss, movement from feedlots to pasture, and shipments to other feedlots for further feeding.

**Cattle on Feed: Number on Feed, Placements, Marketings, and
Other Disappearance, 1,000+ Capacity Feedlots,
United States, March 1, 1999-2001**

Item	Number			2001 as % of	
	1999	2000	2001	1999	2000
	<i>1,000 Head</i>	<i>1,000 Head</i>	<i>1,000 Head</i>	<i>Percent</i>	<i>Percent</i>
On Feed Feb 1 ¹	10,509	11,574	11,941	114	103
Placed on Feed During Feb	1,808	1,880	1,580	87	84
Fed Cattle Marketed During Feb	1,832	2,046	1,745	95	85
Other Disappearance During Feb ²	65	78	81	125	104
On Feed Mar 1 ¹	10,420	11,330	11,695	112	103

¹ Cattle and calves on feed are animals for slaughter market being fed a ration of grain or other concentrates and are expected to produce a carcass that will grade select or better.

² Includes death loss, movement from feedlots to pasture, and shipments to other feedlots for further feeding.

**Cattle on Feed: Number on Feed by Class, 1,000+ Capacity Feedlots,
United States, April 1, 1999-2001**

Item	Number			2001 as % of	
	1999	2000	2001	1999	2000
	<i>1,000 Head</i>	<i>1,000 Head</i>	<i>1,000 Head</i>	<i>Percent</i>	<i>Percent</i>
Class on Feed Apr 1					
Steers and Steer Calves	6,293	6,788	6,957	111	102
Heifers and Heifer Calves	4,053	4,357	4,486	111	103
Cows and Bulls	48	57	80	167	140

**Cattle on Feed: Number on Feed, Placements, Marketings, and
Other Disappearance, 1,000+ Capacity Feedlots,
7 States, April 1, 1999-2001¹**

Item	Number			2001 as % of	
	1999	2000	2001	1999	2000
	<i>1,000 Head</i>	<i>1,000 Head</i>	<i>1,000 Head</i>	<i>Percent</i>	<i>Percent</i>
On Feed Mar 1 ²	8,878	9,695	10,012	113	103
Placed on Feed During Mar	1,741	1,736	1,540	88	89
Fed Cattle Marketed During Mar	1,668	1,764	1,613	97	91
Other Disappearance During Mar ³	52	74	80	154	108
On Feed Apr 1 ²	8,899	9,593	9,859	111	103

¹ The 7 States include AZ, CA, CO, IA, KS, NE, and TX.

² Cattle and calves on feed are animals for slaughter market being fed a ration of grain or other concentrates and are expected to produce a carcass that will grade select or better.

³ Includes death loss, movement from feedlots to pasture, and shipments to other feedlots for further feeding.

**Cattle on Feed: Number on Feed, Placements, Marketings, and
Other Disappearance, 1,000+ Capacity Feedlots,
7 States, March 1, 1999-2001¹**

Item	Number			2001 as % of	
	1999	2000	2001	1999	2000
	<i>1,000 Head</i>	<i>1,000 Head</i>	<i>1,000 Head</i>	<i>Percent</i>	<i>Percent</i>
On Feed Feb 1 ²	8,917	9,885	10,222	115	103
Placed on Feed During Feb	1,563	1,606	1,331	85	83
Fed Cattle Marketed During Feb	1,560	1,749	1,477	95	84
Other Disappearance During Feb ³	42	47	64	152	136
On Feed Mar 1 ²	8,878	9,695	10,012	113	103

¹ The 7 States include AZ, CA, CO, IA, KS, NE, and TX.

² Cattle and calves on feed are animals for slaughter market being fed a ration of grain or other concentrates and are expected to produce a carcass that will grade select or better.

³ Includes death loss, movement from feedlots to pasture, and shipments to other feedlots for further feeding.

**Cattle on Feed: Number on Feed by Class, 1,000+ Capacity Feedlots,
7 States, April 1, 1999-2001¹**

Item	Number			2001 as % of	
	1999	2000	2001	1999	2000
	<i>1,000 Head</i>	<i>1,000 Head</i>	<i>1,000 Head</i>	<i>Percent</i>	<i>Percent</i>
Class on Feed Apr 1					
Steers and Steer Calves	5,341	5,746	5,885	110	102
Heifers and Heifer Calves	3,527	3,810	3,913	111	103
Cows and Bulls	31	37	61	197	165

¹ The 7 States include AZ, CA, CO, IA, KS, NE, and TX.

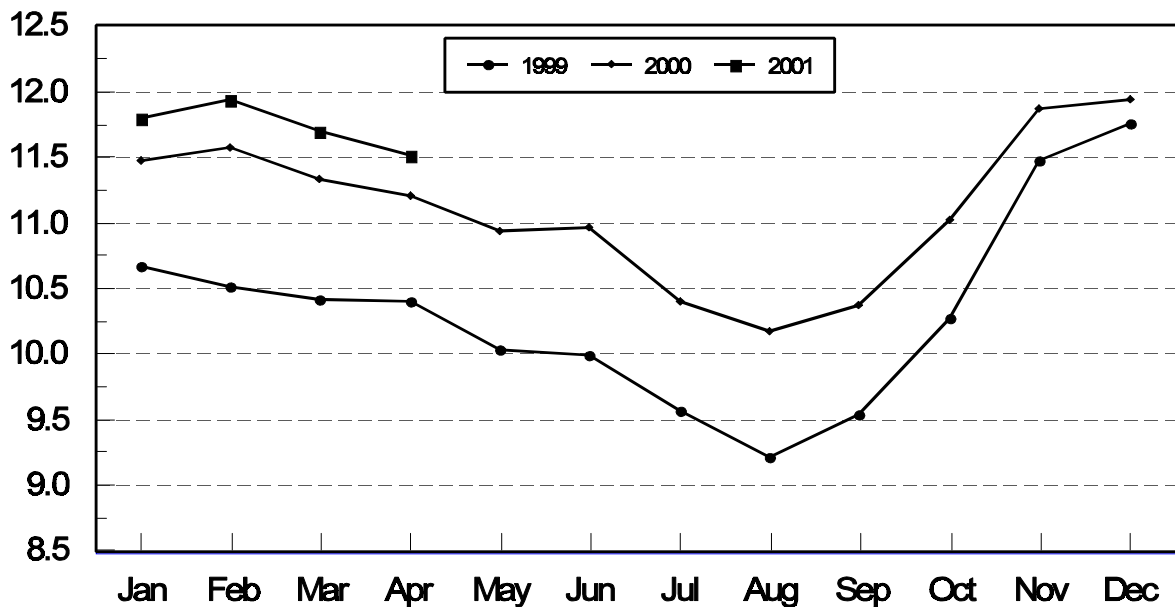
**Cattle on Feed: Number on Feed, 1,000+ Capacity Feedlots,
by Month, State, and United States 2000-2001 ¹**

State	Apr 1, 2000	Mar 1, 2001	Apr 1, 2001		
			Number	as % of 2000	as % of Mar
	<i>1,000 Head</i>	<i>1,000 Head</i>	<i>1,000 Head</i>	<i>Percent</i>	<i>Percent</i>
AZ	273	307	309	113	101
CA	405	440	435	107	99
CO	1,190	1,190	1,190	100	100
ID	320	320	330	103	103
IA	375	385	385	103	100
KS	2,280	2,470	2,460	108	100
NE	2,310	2,380	2,350	102	99
NM	93	111	97	104	87
OK	380	390	370	97	95
SD	200	207	215	108	104
TX	2,760	2,840	2,730	99	96
WA	211	245	257	122	105
Oth Sts	405	410	395	98	96
US	11,202	11,695	11,523	103	99

¹ Cattle and calves on feed are animals for slaughter market being fed a ration of grain or other concentrates and are expected to produce a carcass that will grade select or better.

**United States Cattle on Feed
1,000+ Capacity Feedlots**

Million Head



**Cattle on Feed: Number Placed on Feed, 1,000+ Capacity Feedlots,
by Month, State, and United States 2000-2001**

State	During Mar 2000	During Feb 2001	During Mar 2001		
			Number	as % of 2000	as % of Feb
	<i>1,000 Head</i>	<i>1,000 Head</i>	<i>1,000 Head</i>	<i>Percent</i>	<i>Percent</i>
AZ	30	41	29	97	71
CA	59	55	65	110	118
CO	270	195	230	85	118
ID	69	59	72	104	122
IA	57	45	46	81	102
KS	400	335	395	99	118
NE	400	310	320	80	103
NM	13	5	10	77	200
OK	73	42	66	90	157
SD	34	35	43	126	123
TX	520	350	455	88	130
WA	48	52	53	110	102
Oth Sts	58	56	68	117	121
US	2,031	1,580	1,852	91	117

**Cattle on Feed: Number Placed on Feed by Weight Group, 1,000+ Capacity
Feedlots, by Month, State, and United States, 2000-2001**

State	During March									
	Under 600		600-699		700-799		800 Plus		Total	
	2000	2001	2000	2001	2000	2001	2000	2001	2000	2001
	<i>1,000 Head</i>	<i>1,000 Head</i>	<i>1,000 Head</i>	<i>1,000 Head</i>	<i>1,000 Head</i>	<i>1,000 Head</i>	<i>1,000 Head</i>	<i>1,000 Head</i>	<i>1,000 Head</i>	<i>1,000 Head</i>
CO	28	29	62	40	98	89	82	72	270	230
KS	50	60	80	95	160	150	110	90	400	395
NE	45	31	63	69	154	109	138	111	400	320
TX	100	100	140	145	190	155	90	55	520	455
Oth Sts	110	110	66	67	115	115	150	160	441	452
US	333	330	411	416	717	618	570	488	2,031	1,852
	During February									
	Under 600		600-699		700-799		800 Plus		Total	
	2000	2001	2000	2001	2000	2001	2000	2001	2000	2001
	<i>1,000 Head</i>	<i>1,000 Head</i>	<i>1,000 Head</i>	<i>1,000 Head</i>	<i>1,000 Head</i>	<i>1,000 Head</i>	<i>1,000 Head</i>	<i>1,000 Head</i>	<i>1,000 Head</i>	<i>1,000 Head</i>
CO	36	36	58	40	88	74	68	45	250	195
KS	60	50	110	110	150	120	100	55	420	335
NE	40	25	103	82	138	118	109	85	390	310
TX	110	105	145	100	125	110	50	35	430	350
Oth Sts	105	120	60	70	95	95	130	105	390	390
US	351	336	476	402	596	517	457	325	1,880	1,580

**Cattle on Feed: Number Marketed, 1,000+ Capacity Feedlots,
by Month, State, and United States 2000-2001**

State	During Mar 2000	During Feb 2001	During Mar 2001		
			Number	as % of 2000	as % of Feb
	<i>1,000 Head</i>	<i>1,000 Head</i>	<i>1,000 Head</i>	<i>Percent</i>	<i>Percent</i>
AZ	27	28	22	81	79
CA	51	50	56	110	112
CO	250	225	220	88	98
ID	47	62	61	130	98
IA	56	44	45	80	102
KS	420	350	385	92	110
NE	390	350	335	86	96
NM	22	10	20	91	200
OK	87	58	83	95	143
SD	32	29	32	100	110
TX	570	430	550	96	128
WA	41	47	40	98	85
Oth Sts	63	62	77	122	124
US	2,056	1,745	1,926	94	110

**Cattle on Feed: Other Disappearance, 1,000+ Capacity Feedlots,
by Month, State, and United States 2000-2001 ¹**

State	During Mar 2000	During Feb 2001	During Mar 2001		
			Number	as % of 2000	as % of Feb
	<i>1,000 Head</i>	<i>1,000 Head</i>	<i>1,000 Head</i>	<i>Percent</i>	<i>Percent</i>
AZ	5	8	5	100	63
CA	8	10	14	175	140
CO	10	10	10	100	100
ID	7	2	1	14	50
IA	1	1	1	100	100
KS	20	15	20	100	133
NE	10	10	15	150	150
NM	3	0	4	133	
OK	6	4	3	50	75
SD	2	4	3	150	75
TX	20	10	15	75	150
WA	6	3	1	17	33
Oth Sts	5	4	6	120	150
US	103	81	98	95	121

¹ Includes death loss, movement from feedlots to pasture, and shipments to other feedlots for further feeding.

**Cattle on Feed: Number on Feed by Class, 1,000+ Capacity Feedlots,
by Quarter, State, and United States, 2000-2001**

State	Steers & Steer Calves			Heifers & Heifer Calves			Cows and Bulls		
	Apr 1, 2000	Jan 1, 2001	Apr 1, 2001	Apr 1, 2000	Jan 1, 2001	Apr 1, 2001	Apr 1, 2000	Jan 1, 2001	Apr 1, 2001
	<i>1,000 Head</i>	<i>1,000 Head</i>	<i>1,000 Head</i>	<i>1,000 Head</i>	<i>1,000 Head</i>	<i>1,000 Head</i>	<i>1,000 Head</i>	<i>1,000 Head</i>	<i>1,000 Head</i>
AZ	260	286	300	13	15	9	0	0	0
CA	369	400	400	35	49	35	1	1	0
CO	690	670	650	495	530	535	5	10	5
ID	214	220	218	101	97	107	5	3	5
IA	237	250	245	138	135	140	0	0	0
KS	1,340	1,320	1,400	930	1,078	1,055	10	2	5
NE	1,370	1,380	1,330	920	975	970	20	45	50
NM	47	51	45	46	64	52	0	0	0
OK	240	245	210	140	162	159	0	3	1
SD	113	114	131	82	77	76	5	11	8
TX	1,480	1,630	1,560	1,279	1,299	1,169	1	1	1
WA	138	162	188	73	88	69	0	0	0
Oth Sts	290	290	280	105	127	110	10	8	5
US	6,788	7,018	6,957	4,357	4,696	4,486	57	84	80

Terms and Definitions of Cattle on Feed Estimates

Cattle on feed are animals being fed a ration of grain, silage, hay and/or protein supplement for slaughter market that are expected to produce a carcass that will grade select or better. It excludes cattle being "backgrounded only" for later sale as feeders or later placement in another feedlot.

Placements are cattle put into a feedlot, fed a ration which will produce a carcass that will grade select or better, and are intended for the slaughter market.

Marketings are cattle shipped out of feedlots to a slaughter market.

Other disappearance includes death loss, movement from feedlots to pasture, and shipments to other feedlots for further feeding.

Reliability of Cattle on Feed Estimates

Survey Procedures: During January and July all known feedlots in the U.S. with capacity of 1,000 or more head are surveyed to provide data for cattle on feed estimates. During the other months, all known feedlots from 17 States are surveyed. The 17 States account for 98 percent of the cattle on feed.

Estimating Procedures: These cattle on feed estimates were prepared by the Agricultural Statistics Board after reviewing recommendations and analysis submitted by each State office. Regional and State survey data were reviewed for reasonableness with each other and with estimates from the previous month when setting the current estimates.

Revision Policy: Revisions to previous estimates are made to improve month to month relationships. Estimates for the previous month are subject to revision in all States each month when current estimates are made. In February, all monthly estimates for the previous year, and the number of feedlots and annual marketings from two years ago are reviewed and subject to revisions. The reviews are primarily based on slaughter data, state check-off or brand data, and any other data that may have been received after the original estimate was made. Estimates will also be reviewed after data from the Census of Agriculture are available. No revisions will be made after that date and estimates become final.

Reliability: Since all 1000+ capacity cattle on feed operators in every State are not included in the monthly survey, survey estimates are subject to sampling variability. Survey results are also subject to non-sampling errors such as omissions, duplications, and mistakes in reporting, recording, and processing the data. The effects of these errors cannot be measured directly. They are minimized through rigid quality controls in the data collection process and through a careful review of all reported data for consistency and reasonableness.

The next "Cattle on Feed" report will be released at 3 p.m. ET on May 18, 2001.

The United States Department of Agriculture (USDA) prohibits discrimination in all its programs on the basis of race, color, national origin, gender, religion, age, disability, political beliefs, sexual orientation, and marital or family status. (Not all prohibited bases apply to all programs.) Persons with disabilities who require alternative means for communication of program information (braille, large print, audiotape, etc.) should contact the USDA's TARGET Center at 202-720-2600 (voice and TDD).

To file a complaint of discrimination, write USDA, Director, Office of Civil Rights, Room 326-W, Whitten Building, 14th and Independence Avenue, SW, Washington, D.C., 20250-9410, or call 202-720-5964 (voice or TDD). USDA is an equal opportunity provider and employer.

ACCESS TO REPORTS!!

For your convenience, there are several ways to obtain NASS reports, data products, and services:

INTERNET ACCESS

All NASS reports are available free of charge on the worldwide Internet. For access, connect to the Internet and go to the NASS Home Page at: <http://www.usda.gov/nass/>. Select "Today's Reports" or Publications and then Reports by Calendar or Publications and then Search, by Title or Subject.

E-MAIL SUBSCRIPTION

There are two options for subscribing via e-mail. All NASS reports are available by subscription free of charge direct to your e-mail address. 1) Starting with the NASS Home Page at <http://www.usda.gov/nass/>, click on **Publications**, then click on the **Subscribe by E-mail** button which takes you to the page describing e-mail delivery of reports. Finally, click on **Go to the Subscription Page** and follow the instructions. 2) If you do NOT have Internet access, send an e-mail message to: usda-reports@usda.mannlib.cornell.edu. In the body of the message type the word: **list**.

AUTOFAX ACCESS

NASSFax service is available for some reports from your fax machine. Please call 202-720-2000, using the handset attached to your fax. Respond to the voice prompts. Document 0411 is a list of available reports.

PRINTED REPORTS OR DATA PRODUCTS

CALL OUR TOLL-FREE ORDER DESK: 800-999-6779 (U.S. and Canada)
Other areas, please call 703-834-0125 FAX: 703-834-0110
(Visa, MasterCard, check, or money order acceptable for payment.)

ASSISTANCE

For **assistance** with general agricultural statistics or further information about NASS or its products or services, contact the **Agricultural Statistics Hotline** at **800-727-9540**, 7:30 a.m. to 4:00 p.m. ET, or e-mail: nass@nass.usda.gov.