



# Cattle on Feed

---

Released May 18, 2001, by the National Agricultural Statistics Service (NASS), Agricultural Statistics Board, U.S. Department of Agriculture. For information on "Cattle on Feed" call Steve Anderson at (202) 720-3040, office hours 7:30 a.m. to 4:00 p.m. ET.

## U.S. Cattle on Feed Up 2 Percent

**Cattle and calves on feed** for slaughter market in the United States for feedlots with capacity of 1,000 or more head totaled 11.17 million head on May 1, 2001. The inventory was 2 percent above May 1, 2000 and 11 percent above May 1, 1999.

**Placements** in feedlots during April totaled 1.55 million, 9 percent below 2000 and 8 percent below 1999. Net placements were 1.46 million. During April, placements of cattle and calves weighing less than 600 pounds were 334,000, 600-699 pounds were 384,000, 700-799 pounds were 494,000, and 800 pounds and greater were 339,000.

**Marketings** of fed cattle during April totaled 1.82 million, 3 percent below 2000 and 7 percent below 1999.

**Other disappearance** totaled 89,000 during April, 1 percent below 2000 and 14 percent below 1999.

## Cattle on Feed in Historic 7 States Up 2 Percent

**Cattle on feed** May 1, 2001, in the historic 7 States for feedlots with capacity of 1,000 or more head totaled 9.56 million, up 2 percent from the previous year and 11 percent above May 1, 1999.

**Placements** in feedlots during April totaled 1.32 million, 10 percent below 2000 and 8 percent below 1999.

**Marketings** during April totaled 1.55 million, 3 percent below 2000 and 8 percent below 1999.

**Other disappearance** during April was 74,000 head, 4 percent above 2000 but 5 percent below 1999.

**Cattle on Feed: Number on Feed, Placements, Marketings, and  
Other Disappearance, 1,000+ Capacity Feedlots,  
United States, May 1, 1999-2001**

Item	Number			2001 as % of	
	1999	2000	2001	1999	2000
	<i>1,000 Head</i>	<i>1,000 Head</i>	<i>1,000 Head</i>	<i>Percent</i>	<i>Percent</i>
On Feed Apr 1 <sup>1</sup>	10,394	11,202	11,523	111	103
Placed on Feed During Apr	1,688	1,707	1,551	92	91
Fed Cattle Marketed During Apr	1,946	1,875	1,815	93	97
Other Disappearance During Apr <sup>2</sup>	104	90	89	86	99
On Feed May 1 <sup>1</sup>	10,032	10,944	11,170	111	102

<sup>1</sup> Cattle and calves on feed are animals for slaughter market being fed a ration of grain or other concentrates and are expected to produce a carcass that will grade select or better.

<sup>2</sup> Includes death loss, movement from feedlots to pasture, and shipments to other feedlots for further feeding.

**Cattle on Feed: Number on Feed, Placements, Marketings, and  
Other Disappearance, 1,000+ Capacity Feedlots,  
United States, April 1, 1999-2001**

Item	Number			2001 as % of	
	1999	2000	2001	1999	2000
	<i>1,000 Head</i>	<i>1,000 Head</i>	<i>1,000 Head</i>	<i>Percent</i>	<i>Percent</i>
On Feed Mar 1 <sup>1</sup>	10,420	11,330	11,695	112	103
Placed on Feed During Mar	2,031	2,031	*1,842	91	91
Fed Cattle Marketed During Mar	1,986	2,056	*1,916	96	93
Other Disappearance During Mar <sup>2</sup>	71	103	98	138	95
On Feed Apr 1 <sup>1</sup>	10,394	11,202	11,523	111	103

\* Revised.

<sup>1</sup> Cattle and calves on feed are animals for slaughter market being fed a ration of grain or other concentrates and are expected to produce a carcass that will grade select or better.

<sup>2</sup> Includes death loss, movement from feedlots to pasture, and shipments to other feedlots for further feeding.

**Cattle on Feed: Number on Feed, Placements, Marketings, and  
Other Disappearance, 1,000+ Capacity Feedlots,  
7 States, May 1, 1999-2001<sup>1</sup>**

Item	Number			2001 as % of	
	1999	2000	2001	1999	2000
	<i>1,000 Head</i>	<i>1,000 Head</i>	<i>1,000 Head</i>	<i>Percent</i>	<i>Percent</i>
On Feed Apr 1 <sup>2</sup>	8,899	9,593	9,859	111	103
Placed on Feed During Apr	1,443	1,470	1,324	92	90
Fed Cattle Marketed During Apr	1,681	1,601	1,546	92	97
Other Disappearance During Apr <sup>3</sup>	78	71	74	95	104
On Feed May 1 <sup>2</sup>	8,583	9,391	9,563	111	102

<sup>1</sup> The 7 States include AZ, CA, CO, IA, KS, NE, and TX.

<sup>2</sup> Cattle and calves on feed are animals for slaughter market being fed a ration of grain or other concentrates and are expected to produce a carcass that will grade select or better.

<sup>3</sup> Includes death loss, movement from feedlots to pasture, and shipments to other feedlots for further feeding.

**Cattle on Feed: Number on Feed, Placements, Marketings, and  
Other Disappearance, 1,000+ Capacity Feedlots,  
7 States, April 1, 1999-2001<sup>1</sup>**

Item	Number			2001 as % of	
	1999	2000	2001	1999	2000
	<i>1,000 Head</i>	<i>1,000 Head</i>	<i>1,000 Head</i>	<i>Percent</i>	<i>Percent</i>
On Feed Mar 1 <sup>2</sup>	8,878	9,695	10,012	113	103
Placed on Feed During Mar	1,741	1,736	*1,530	88	88
Fed Cattle Marketed During Mar	1,668	1,764	*1,603	96	91
Other Disappearance During Mar <sup>3</sup>	52	74	80	154	108
On Feed Apr 1 <sup>2</sup>	8,899	9,593	9,859	111	103

\* Revised.

<sup>1</sup> The 7 States include AZ, CA, CO, IA, KS, NE, and TX.

<sup>2</sup> Cattle and calves on feed are animals for slaughter market being fed a ration of grain or other concentrates and are expected to produce a carcass that will grade select or better.

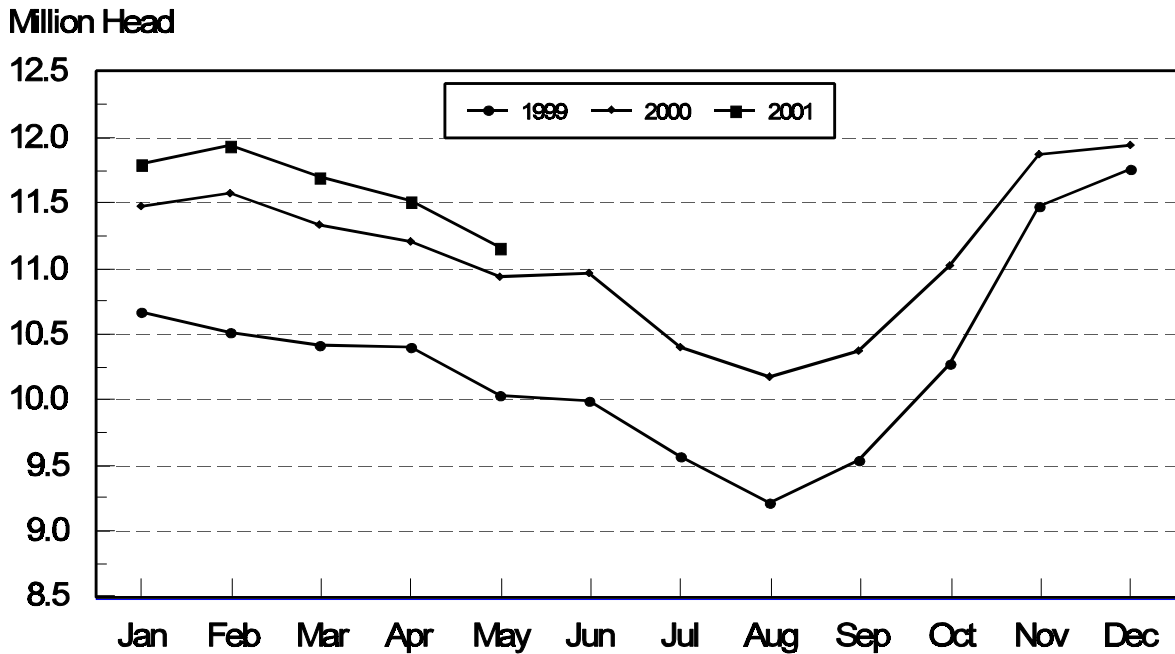
<sup>3</sup> Includes death loss, movement from feedlots to pasture, and shipments to other feedlots for further feeding.

**Cattle on Feed: Number on Feed, 1,000+ Capacity Feedlots,  
by Month, State, and United States 2000-2001 <sup>1</sup>**

State	May 1, 2000	Apr 1, 2001	May 1, 2001		
			Number	as % of 2000	as % of Apr
	<i>1,000 Head</i>	<i>1,000 Head</i>	<i>1,000 Head</i>	<i>Percent</i>	<i>Percent</i>
AZ	276	309	308	112	100
CA	405	435	435	107	100
CO	1,210	1,190	1,170	97	98
ID	315	330	330	105	100
IA	370	385	380	103	99
KS	2,230	2,460	2,380	107	97
NE	2,240	2,350	2,250	100	96
NM	90	97	83	92	86
OK	360	370	345	96	93
SD	180	215	215	119	100
TX	2,660	2,730	2,640	99	97
WA	218	257	254	117	99
Oth Sts	390	395	380	97	96
US	10,944	11,523	11,170	102	97

<sup>1</sup> Cattle and calves on feed are animals for slaughter market being fed a ration of grain or other concentrates and are expected to produce a carcass that will grade select or better.

**United States Cattle on Feed  
1,000+ Capacity Feedlots**



**Cattle on Feed: Number Placed on Feed, 1,000+ Capacity Feedlots,  
by Month, State, and United States 2000-2001**

State	During Apr 2000	During Mar 2001	During Apr 2001		
			Number	as % of 2000	as % of Mar
	<i>1,000 Head</i>	<i>1,000 Head</i>	<i>1,000 Head</i>	<i>Percent</i>	<i>Percent</i>
AZ	34	29	27	79	93
CA	56	65	60	107	92
CO	195	*220	160	82	73
ID	49	72	56	114	78
IA	40	46	37	93	80
KS	380	395	350	92	89
NE	320	320	250	78	78
NM	16	10	12	75	120
OK	70	66	51	73	77
SD	16	43	27	169	63
TX	445	455	440	99	97
WA	40	53	37	93	70
Oth Sts	46	68	44	96	65
US	1,707	*1,842	1,551	91	84

\* Revised.

**Cattle on Feed: Number Placed on Feed by Weight Group, 1,000+ Capacity  
Feedlots, by Month, State, and United States, 2000-2001**

State	During April									
	Under 600		600-699		700-799		800 Plus		Total	
	2000	2001	2000	2001	2000	2001	2000	2001	2000	2001
	<i>1,000 Head</i>	<i>1,000 Head</i>	<i>1,000 Head</i>	<i>1,000 Head</i>	<i>1,000 Head</i>	<i>1,000 Head</i>	<i>1,000 Head</i>	<i>1,000 Head</i>	<i>1,000 Head</i>	<i>1,000 Head</i>
CO	32	19	28	40	79	57	56	44	195	160
KS	55	75	70	80	145	130	110	65	380	350
NE	29	40	45	68	113	77	133	65	320	250
TX	80	105	115	140	145	140	105	55	445	440
Oth Sts	105	95	52	56	95	90	115	110	367	351
US	301	334	310	384	577	494	519	339	1,707	1,551
	During March									
	Under 600		600-699		700-799		800 Plus		Total	
	2000	2001	2000	2001	2000	2001	2000	2001	2000	2001
	<i>1,000 Head</i>	<i>1,000 Head</i>	<i>1,000 Head</i>	<i>1,000 Head</i>	<i>1,000 Head</i>	<i>1,000 Head</i>	<i>1,000 Head</i>	<i>1,000 Head</i>	<i>1,000 Head</i>	<i>1,000 Head</i>
CO	28	*28	62	*38	98	*85	82	*69	270	*220
KS	50	60	80	95	160	150	110	90	400	395
NE	45	31	63	69	154	109	138	111	400	320
TX	100	100	140	145	190	155	90	55	520	455
Oth Sts	110	110	66	67	115	115	150	160	441	452
US	333	*329	411	*414	717	*614	570	*485	2,031	*1,842

\* Revised.

**Cattle on Feed: Number Marketed, 1,000+ Capacity Feedlots,  
by Month, State, and United States 2000-2001**

State	During Apr 2000	During Mar 2001	During Apr 2001		
			Number	as % of 2000	as % of Mar
	<i>1,000 Head</i>	<i>1,000 Head</i>	<i>1,000 Head</i>	<i>Percent</i>	<i>Percent</i>
AZ	28	22	25	89	114
CA	49	56	50	102	89
CO	170	*210	170	100	81
ID	43	61	53	123	87
IA	44	45	41	93	91
KS	400	385	395	99	103
NE	380	335	345	91	103
NM	19	20	25	132	125
OK	88	83	72	82	87
SD	33	32	25	76	78
TX	530	550	520	98	95
WA	32	40	39	122	98
Oth Sts	59	77	55	93	71
US	1,875	*1,916	1,815	97	95

\* Revised.

**Cattle on Feed: Other Disappearance, 1,000+ Capacity Feedlots,  
by Month, State, and United States 2000-2001 <sup>1</sup>**

State	During Apr 2000	During Mar 2001	During Apr 2001		
			Number	as % of 2000	as % of Mar
	<i>1,000 Head</i>	<i>1,000 Head</i>	<i>1,000 Head</i>	<i>Percent</i>	<i>Percent</i>
AZ	3	5	3	100	60
CA	7	14	10	143	71
CO	5	10	10	200	100
ID	11	1	3	27	300
IA	1	1	1	100	100
KS	30	20	35	117	175
NE	10	15	5	50	33
NM	0	4	1		25
OK	2	3	4	200	133
SD	3	3	2	67	67
TX	15	15	10	67	67
WA	1	1	1	100	100
Oth Sts	2	6	4	200	67
US	90	98	89	99	91

<sup>1</sup> Includes death loss, movement from feedlots to pasture, and shipments to other feedlots for further feeding.

## Terms and Definitions of Cattle on Feed Estimates

**Cattle on feed** are animals being fed a ration of grain, silage, hay and/or protein supplement for slaughter market that are expected to produce a carcass that will grade select or better. It excludes cattle being "backgrounded only" for later sale as feeders or later placement in another feedlot.

**Placements** are cattle put into a feedlot, fed a ration which will produce a carcass that will grade select or better, and are intended for the slaughter market.

**Marketings** are cattle shipped out of feedlots to a slaughter market.

**Other disappearance** includes death loss, movement from feedlots to pasture, and shipments to other feedlots for further feeding.

## Reliability of Cattle on Feed Estimates

**Survey Procedures:** During January and July all known feedlots in the U.S. with capacity of 1,000 or more head are surveyed to provide data for cattle on feed estimates. During the other months, all known feedlots from 17 States are surveyed. The 17 States account for 98 percent of the cattle on feed.

**Estimating Procedures:** These cattle on feed estimates were prepared by the Agricultural Statistics Board after reviewing recommendations and analysis submitted by each State office. Regional and State survey data were reviewed for reasonableness with each other and with estimates from the previous month when setting the current estimates.

**Revision Policy:** Revisions to previous estimates are made to improve month to month relationships. Estimates for the previous month are subject to revision in all States each month when current estimates are made. In February, all monthly estimates for the previous year, and the number of feedlots and annual marketings from two years ago are reviewed and subject to revisions. The reviews are primarily based on slaughter data, state check-off or brand data, and any other data that may have been received after the original estimate was made. Estimates will also be reviewed after data from the Census of Agriculture are available. No revisions will be made after that date and estimates become final.

**Reliability:** Since all 1000+ capacity cattle on feed operators in every State are not included in the monthly survey, survey estimates are subject to sampling variability. Survey results are also subject to non-sampling errors such as omissions, duplications, and mistakes in reporting, recording, and processing the data. The effects of these errors cannot be measured directly. They are minimized through rigid quality controls in the data collection process and through a careful review of all reported data for consistency and reasonableness.

The next "Cattle on Feed" report will be released at 3 p.m. ET on June 22, 2001.

The United States Department of Agriculture (USDA) prohibits discrimination in all its programs on the basis of race, color, national origin, gender, religion, age, disability, political beliefs, sexual orientation, and marital or family status. (Not all prohibited bases apply to all programs.) Persons with disabilities who require alternative means for communication of program information (braille, large print, audiotape, etc.) should contact the USDA's TARGET Center at 202-720-2600 (voice and TDD).

To file a complaint of discrimination, write USDA, Director, Office of Civil Rights, Room 326-W, Whitten Building, 1400 Independence Avenue, SW, Washington, D.C., 20250-9410, or call 202-720-5964 (voice or TDD). USDA is an equal opportunity provider and employer.

## **ACCESS TO REPORTS!!**

---

For your convenience, there are several ways to obtain NASS reports, data products, and services:

### **INTERNET ACCESS**

All NASS reports are available free of charge on the worldwide Internet. For access, connect to the Internet and go to the NASS Home Page at: <http://www.usda.gov/nass/>. Select "Today's Reports" or Publications and then Reports by Calendar or Publications and then Search, by Title or Subject.

### **E-MAIL SUBSCRIPTION**

There are two options for subscribing via e-mail. All NASS reports are available by subscription free of charge direct to your e-mail address. 1) Starting with the NASS Home Page at <http://www.usda.gov/nass/>, click on **Publications**, then click on the **Subscribe by E-mail** button which takes you to the page describing e-mail delivery of reports. Finally, click on **Go to the Subscription Page** and follow the instructions. 2) If you do NOT have Internet access, send an e-mail message to: [usda-reports@usda.mannlib.cornell.edu](mailto:usda-reports@usda.mannlib.cornell.edu). In the body of the message type the word: **list**.

### **AUTOFAX ACCESS**

NASSFax service is available for some reports from your fax machine. Please call 202-720-2000, using the handset attached to your fax. Respond to the voice prompts. Document 0411 is a list of available reports.

-----

### **PRINTED REPORTS OR DATA PRODUCTS**

**CALL OUR TOLL-FREE ORDER DESK: 800-999-6779 (U.S. and Canada)**  
**Other areas, please call 703-834-0125      FAX: 703-834-0110**  
**(Visa, MasterCard, check, or money order acceptable for payment.)**

-----

### **ASSISTANCE**

For **assistance** with general agricultural statistics or further information about NASS or its products or services, contact the **Agricultural Statistics Hotline** at **800-727-9540**, 7:30 a.m. to 4:00 p.m. ET, or e-mail: [nass@nass.usda.gov](mailto:nass@nass.usda.gov).