



Cattle on Feed

Released June 22, 2001, by the National Agricultural Statistics Service (NASS), Agricultural Statistics Board, U.S. Department of Agriculture. For information on "Cattle on Feed" call Steve Anderson at (202) 720-3040, office hours 7:30 a.m. to 4:00 p.m. ET.

U.S. Cattle on Feed Up 2 Percent

Cattle and calves on feed for slaughter market in the United States for feedlots with capacity of 1,000 or more head totaled 11.24 million head on June 1, 2001. The inventory was 2 percent above June 1, 2000 and 13 percent above June 1, 1999.

Placements in feedlots during May totaled 2.37 million, 3 percent above 2000 and 16 percent above 1999. Net placements were 2.27 million. During May, placements of cattle and calves weighing less than 600 pounds were 494,000, 600-699 pounds were 509,000, 700-799 pounds were 799,000, and 800 pounds and greater were 565,000.

Marketings of fed cattle during May totaled 2.20 million, 1 percent above 2000 and 10 percent above 1999.

Other disappearance totaled 101,000 during May, 12 percent below 2000 but 2 percent above 1999.

Cattle on Feed in Historic 7 States Up 2 Percent

Cattle on feed June 1, 2001, in the historic 7 States for feedlots with capacity of 1,000 or more head totaled 9.66 million, up 2 percent from the previous year and 13 percent above June 1, 1999.

Placements in feedlots during May totaled 2.06 million, 3 percent above 2000 and 19 percent above 1999.

Marketings during May totaled 1.88 million, 1 percent above 2000 and up 11 percent from 1999.

Other disappearance during May was 88,000 head, 4 percent above 2000 and 21 percent above 1999.

**Cattle on Feed: Number on Feed, Placements, Marketings, and
Other Disappearance, 1,000+ Capacity Feedlots,
United States, June 1, 1999-2001**

Item	Number			2001 as % of	
	1999	2000	2001	1999	2000
	<i>1,000 Head</i>	<i>1,000 Head</i>	<i>1,000 Head</i>	<i>Percent</i>	<i>Percent</i>
On Feed May 1 ¹	10,032	10,944	11,170	111	102
Placed on Feed During May	2,049	2,305	2,367	116	103
Fed Cattle Marketed During May	1,995	2,167	2,196	110	101
Other Disappearance During May ²	99	115	101	102	88
On Feed Jun 1 ¹	9,987	10,967	11,240	113	102

¹ Cattle and calves on feed are animals for slaughter market being fed a ration of grain or other concentrates and are expected to produce a carcass that will grade select or better.

² Includes death loss, movement from feedlots to pasture, and shipments to other feedlots for further feeding.

**Cattle on Feed: Number on Feed, Placements, Marketings, and
Other Disappearance, 1,000+ Capacity Feedlots,
United States, May 1, 1999-2001**

Item	Number			2001 as % of	
	1999	2000	2001	1999	2000
	<i>1,000 Head</i>	<i>1,000 Head</i>	<i>1,000 Head</i>	<i>Percent</i>	<i>Percent</i>
On Feed Apr 1 ¹	10,394	11,202	11,523	111	103
Placed on Feed During Apr	1,688	1,707	1,551	92	91
Fed Cattle Marketed During Apr	1,946	1,875	1,815	93	97
Other Disappearance During Apr ²	104	90	89	86	99
On Feed May 1 ¹	10,032	10,944	11,170	111	102

¹ Cattle and calves on feed are animals for slaughter market being fed a ration of grain or other concentrates and are expected to produce a carcass that will grade select or better.

² Includes death loss, movement from feedlots to pasture, and shipments to other feedlots for further feeding.

**Cattle on Feed: Number on Feed, Placements, Marketings, and
Other Disappearance, 1,000+ Capacity Feedlots,
7 States, June 1, 1999-2001¹**

Item	Number			2001 as % of	
	1999	2000	2001	1999	2000
	<i>1,000 Head</i>	<i>1,000 Head</i>	<i>1,000 Head</i>	<i>Percent</i>	<i>Percent</i>
On Feed May 1 ²	8,583	9,391	9,563	111	102
Placed on Feed During May	1,733	1,998	2,060	119	103
Fed Cattle Marketed During May	1,696	1,863	1,875	111	101
Other Disappearance During May ³	73	85	88	121	104
On Feed Jun 1 ²	8,547	9,441	9,660	113	102

¹ The 7 States include AZ, CA, CO, IA, KS, NE, and TX.

² Cattle and calves on feed are animals for slaughter market being fed a ration of grain or other concentrates and are expected to produce a carcass that will grade select or better.

³ Includes death loss, movement from feedlots to pasture, and shipments to other feedlots for further feeding.

**Cattle on Feed: Number on Feed, Placements, Marketings, and
Other Disappearance, 1,000+ Capacity Feedlots,
7 States, May 1, 1999-2001¹**

Item	Number			2001 as % of	
	1999	2000	2001	1999	2000
	<i>1,000 Head</i>	<i>1,000 Head</i>	<i>1,000 Head</i>	<i>Percent</i>	<i>Percent</i>
On Feed Apr 1 ²	8,899	9,593	9,859	111	103
Placed on Feed During Apr	1,443	1,470	1,324	92	90
Fed Cattle Marketed During Apr	1,681	1,601	1,546	92	97
Other Disappearance During Apr ³	78	71	74	95	104
On Feed May 1 ²	8,583	9,391	9,563	111	102

¹ The 7 States include AZ, CA, CO, IA, KS, NE, and TX.

² Cattle and calves on feed are animals for slaughter market being fed a ration of grain or other concentrates and are expected to produce a carcass that will grade select or better.

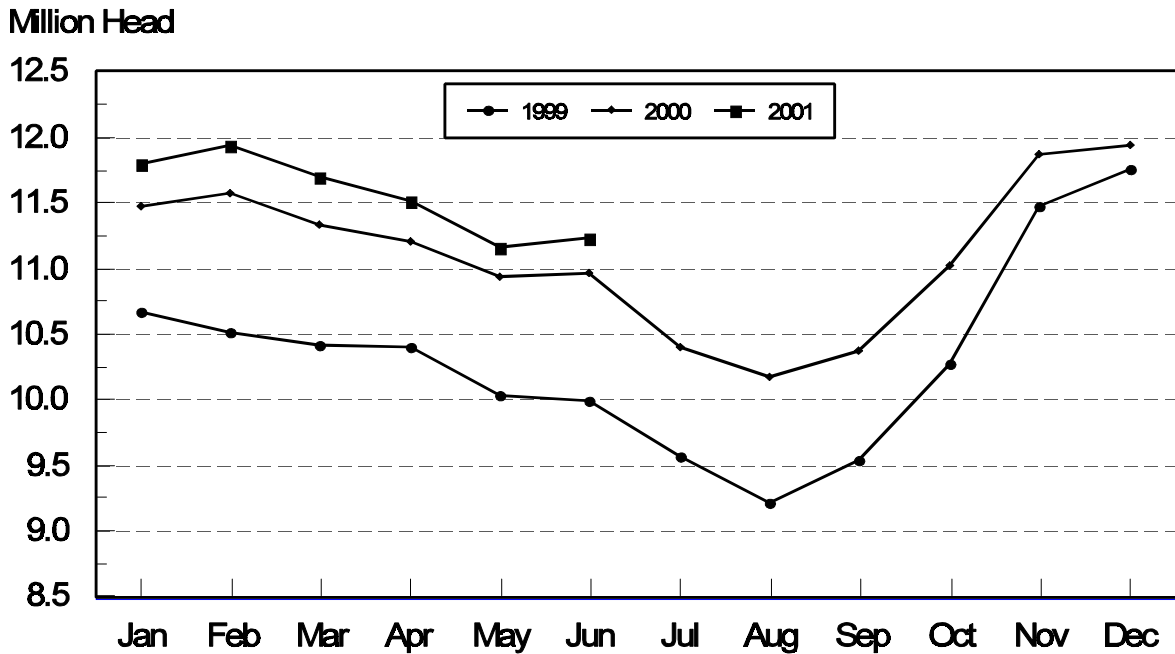
³ Includes death loss, movement from feedlots to pasture, and shipments to other feedlots for further feeding.

**Cattle on Feed: Number on Feed, 1,000+ Capacity Feedlots,
by Month, State, and United States 2000-2001 ¹**

State	Jun 1, 2000	May 1, 2001	Jun 1, 2001		
			Number	as % of 2000	as % of May
	<i>1,000 Head</i>	<i>1,000 Head</i>	<i>1,000 Head</i>	<i>Percent</i>	<i>Percent</i>
AZ	276	308	305	111	99
CA	410	435	450	110	103
CO	1,210	1,170	1,160	96	99
ID	305	330	320	105	97
IA	355	380	365	103	96
KS	2,290	2,380	2,400	105	101
NE	2,100	2,250	2,090	100	93
NM	90	83	81	90	98
OK	375	345	370	99	107
SD	165	215	200	121	93
TX	2,800	2,640	2,890	103	109
WA	216	254	244	113	96
Oth Sts	375	380	365	97	96
US	10,967	11,170	11,240	102	101

¹ Cattle and calves on feed are animals for slaughter market being fed a ration of grain or other concentrates and are expected to produce a carcass that will grade select or better.

**United States Cattle on Feed
1,000+ Capacity Feedlots**



**Cattle on Feed: Number Placed on Feed, 1,000+ Capacity Feedlots,
by Month, State, and United States 2000-2001**

State	During May 2000	During Apr 2001	During May 2001		
			Number	as % of 2000	as % of Apr
	<i>1,000 Head</i>	<i>1,000 Head</i>	<i>1,000 Head</i>	<i>Percent</i>	<i>Percent</i>
AZ	37	27	41	111	152
CA	65	60	77	118	128
CO	195	160	190	97	119
ID	60	56	57	95	102
IA	41	37	37	90	100
KS	550	350	530	96	151
NE	390	250	375	96	150
NM	18	12	21	117	175
OK	103	51	110	107	216
SD	23	27	25	109	93
TX	720	440	810	113	184
WA	44	37	44	100	119
Oth Sts	59	44	50	85	114
US	2,305	1,551	2,367	103	153

**Cattle on Feed: Number Placed on Feed by Weight Group, 1,000+ Capacity
Feedlots, by Month, State, and United States, 2000-2001**

State	During May									
	Under 600		600-699		700-799		800 Plus		Total	
	2000	2001	2000	2001	2000	2001	2000	2001	2000	2001
	<i>1,000 Head</i>	<i>1,000 Head</i>	<i>1,000 Head</i>	<i>1,000 Head</i>	<i>1,000 Head</i>	<i>1,000 Head</i>	<i>1,000 Head</i>	<i>1,000 Head</i>	<i>1,000 Head</i>	<i>1,000 Head</i>
CO	25	24	32	45	68	69	70	52	195	190
KS	65	80	110	120	205	210	170	120	550	530
NE	32	60	59	64	161	130	138	121	390	375
TX	140	205	200	205	240	270	140	130	720	810
Oth Sts	120	125	70	75	120	120	140	142	450	462
US	382	494	471	509	794	799	658	565	2,305	2,367
	During April									
	Under 600		600-699		700-799		800 Plus		Total	
	2000	2001	2000	2001	2000	2001	2000	2001	2000	2001
	<i>1,000 Head</i>	<i>1,000 Head</i>	<i>1,000 Head</i>	<i>1,000 Head</i>	<i>1,000 Head</i>	<i>1,000 Head</i>	<i>1,000 Head</i>	<i>1,000 Head</i>	<i>1,000 Head</i>	<i>1,000 Head</i>
CO	32	19	28	40	79	57	56	44	195	160
KS	55	75	70	80	145	130	110	65	380	350
NE	29	40	45	68	113	77	133	65	320	250
TX	80	105	115	140	145	140	105	55	445	440
Oth Sts	105	95	52	56	95	90	115	110	367	351
US	301	334	310	384	577	494	519	339	1,707	1,551

**Cattle on Feed: Number Marketed, 1,000+ Capacity Feedlots,
by Month, State, and United States 2000-2001**

State	During May 2000	During Apr 2001	During May 2001		
			Number	as % of 2000	as % of Apr
	<i>1,000 Head</i>	<i>1,000 Head</i>	<i>1,000 Head</i>	<i>Percent</i>	<i>Percent</i>
AZ	32	25	34	106	136
CA	52	50	50	96	100
CO	180	170	190	106	112
ID	58	53	64	110	121
IA	54	41	51	94	124
KS	470	395	485	103	123
NE	510	345	520	102	151
NM	16	25	22	138	88
OK	86	72	83	97	115
SD	31	25	37	119	148
TX	565	520	545	96	105
WA	46	39	53	115	136
Oth Sts	67	55	62	93	113
US	2,167	1,815	2,196	101	121

**Cattle on Feed: Other Disappearance, 1,000+ Capacity Feedlots,
by Month, State, and United States 2000-2001 ¹**

State	During May 2000	During Apr 2001	During May 2001		
			Number	as % of 2000	as % of Apr
	<i>1,000 Head</i>	<i>1,000 Head</i>	<i>1,000 Head</i>	<i>Percent</i>	<i>Percent</i>
AZ	5	3	10	200	333
CA	8	10	12	150	120
CO	15	10	10	67	100
ID	12	3	3	25	100
IA	2	1	1	50	100
KS	20	35	25	125	71
NE	20	5	15	75	300
NM	2	1	1	50	100
OK	2	4	2	100	50
SD	7	2	3	43	150
TX	15	10	15	100	150
WA	0	1	1		100
Oth Sts	7	4	3	43	75
US	115	89	101	88	113

¹ Includes death loss, movement from feedlots to pasture, and shipments to other feedlots for further feeding.

Terms and Definitions of Cattle on Feed Estimates

Cattle on feed are animals being fed a ration of grain, silage, hay and/or protein supplement for slaughter market that are expected to produce a carcass that will grade select or better. It excludes cattle being "backgrounded only" for later sale as feeders or later placement in another feedlot.

Placements are cattle put into a feedlot, fed a ration which will produce a carcass that will grade select or better, and are intended for the slaughter market.

Marketings are cattle shipped out of feedlots to a slaughter market.

Other disappearance includes death loss, movement from feedlots to pasture, and shipments to other feedlots for further feeding.

Reliability of Cattle on Feed Estimates

Survey Procedures: During January and July all known feedlots in the U.S. with capacity of 1,000 or more head are surveyed to provide data for cattle on feed estimates. During the other months, all known feedlots from 17 States are surveyed. The 17 States account for 98 percent of the cattle on feed in feedlots with capacity of 1,000 or more head.

Estimating Procedures: These cattle on feed estimates were prepared by the Agricultural Statistics Board after reviewing recommendations and analysis submitted by each State office. Regional and State survey data were reviewed for reasonableness with each other and with estimates from the previous month when setting the current estimates.

Revision Policy: Revisions to previous estimates are made to improve month to month relationships. Estimates for the previous month are subject to revision in all States each month when current estimates are made. In February, all monthly estimates for the previous year, and the number of feedlots and annual marketings from two years ago are reviewed and subject to revisions. The reviews are primarily based on slaughter data, state check-off or brand data, and any other data that may have been received after the original estimate was made. Estimates will also be reviewed after data from the Census of Agriculture are available. No revisions will be made after that date and estimates become final.

Reliability: Since all 1000+ capacity cattle on feed operators in every State are not included in the monthly survey, survey estimates are subject to sampling variability. Survey results are also subject to non-sampling errors such as omissions, duplications, and mistakes in reporting, recording, and processing the data. The effects of these errors cannot be measured directly. They are minimized through rigid quality controls in the data collection process and through a careful review of all reported data for consistency and reasonableness.

The next "Cattle on Feed" report will be released at 3 p.m. ET on July 20, 2001.

The United States Department of Agriculture (USDA) prohibits discrimination in all its programs on the basis of race, color, national origin, gender, religion, age, disability, political beliefs, sexual orientation, and marital or family status. (Not all prohibited bases apply to all programs.) Persons with disabilities who require alternative means for communication of program information (braille, large print, audiotape, etc.) should contact the USDA's TARGET Center at 202-720-2600 (voice and TDD).

To file a complaint of discrimination, write USDA, Director, Office of Civil Rights, Room 326-W, Whitten Building, 1400 Independence Avenue, SW, Washington, D.C., 20250-9410, or call 202-720-5964 (voice or TDD). USDA is an equal opportunity provider and employer.

ACCESS TO REPORTS!!

For your convenience, there are several ways to obtain NASS reports, data products, and services:

INTERNET ACCESS

All NASS reports are available free of charge on the worldwide Internet. For access, connect to the Internet and go to the NASS Home Page at: <http://www.usda.gov/nass/>. Select "Today's Reports" or Publications and then Reports by Calendar or Publications and then Search, by Title or Subject.

E-MAIL SUBSCRIPTION

There are two options for subscribing via e-mail. All NASS reports are available by subscription free of charge direct to your e-mail address. 1) Starting with the NASS Home Page at <http://www.usda.gov/nass/>, click on **Publications**, then click on the **Subscribe by E-mail** button which takes you to the page describing e-mail delivery of reports. Finally, click on **Go to the Subscription Page** and follow the instructions. 2) If you do NOT have Internet access, send an e-mail message to: usda-reports@usda.mannlib.cornell.edu. In the body of the message type the word: **list**.

AUTOFAX ACCESS

NASSFax service is available for some reports from your fax machine. Please call 202-720-2000, using the handset attached to your fax. Respond to the voice prompts. Document 0411 is a list of available reports.

PRINTED REPORTS OR DATA PRODUCTS

CALL OUR TOLL-FREE ORDER DESK: 800-999-6779 (U.S. and Canada)
Other areas, please call 703-834-0125 FAX: 703-834-0110
(Visa, MasterCard, check, or money order acceptable for payment.)

ASSISTANCE

For **assistance** with general agricultural statistics or further information about NASS or its products or services, contact the **Agricultural Statistics Hotline** at **800-727-9540**, 7:30 a.m. to 4:00 p.m. ET, or e-mail: nass@nass.usda.gov.