



Cattle on Feed

Released July 20, 2001, by the National Agricultural Statistics Service (NASS), Agricultural Statistics Board, U.S. Department of Agriculture. For information on "Cattle on Feed" call Steve Anderson at (202) 720-3040, office hours 7:30 a.m. to 4:00 p.m. ET.

U.S. Cattle on Feed Up 6 Percent

Cattle and calves on feed for slaughter market in the United States for feedlots with capacity of 1,000 or more head totaled 11.01 million head on July 1, 2001. The inventory was 6 percent above July 1, 2000 and 15 percent above July 1, 1999. The inventory included 6.50 million steers and steer calves, up 4 percent from the previous year. This group accounted for 59 percent of the total inventory. Heifers and heifer calves accounted for 4.45 million head, up 7 percent from 2000.

Placements in feedlots during June totaled 1.97 million, 18 percent above 2000 and 10 percent above 1999. Net placements were 1.89 million. During June, placements of cattle and calves weighing less than 600 pounds were 419,000, 600-699 pounds were 442,000, 700-799 pounds were 631,000, and 800 pounds and greater were 475,000.

Marketings of fed cattle during June totaled 2.12 million, 2 percent below 2000 and 1 percent below 1999.

Other disappearance totaled 77,000 during June, 35 percent above 2000 and 22 percent above 1999.

Cattle on Feed in Historic 7 States Up 6 Percent

Cattle on feed July 1, 2001, in the historic 7 States for feedlots with capacity of 1,000 or more head totaled 9.47 million, up 6 percent from the previous year and 16 percent above July 1, 1999. The inventory included 5.52 million steers and steer calves, up 4 percent from the previous year. This group accounted for 58 percent of the total inventory. Heifers and heifer calves accounted for 3.89 million head, up 8 percent from 2000.

Placements in feedlots during June totaled 1.69 million, 20 percent above 2000 and 12 percent above 1999.

Marketings during June totaled 1.82 million, 1 percent below both 2000 and 1999.

Other disappearance during June was 60,000 head, 62 percent above 2000 and up 36 percent from 1999.

U.S. All Cattle on Feed Up 7 Percent

Cattle on feed July 1, 2001, from all feedlots in the United States, totaled 13.1 million, up 7 percent from the 12.3 million on July 1, 2000 and 14 percent above July 1, 1999.

**Cattle on Feed: Number on Feed, Placements, Marketings, and
Other Disappearance, 1,000+ Capacity Feedlots,
United States, July 1, 1999-2001**

Item	Number			2001 as % of	
	1999	2000	2001	1999	2000
	<i>1,000 Head</i>	<i>1,000 Head</i>	<i>1,000 Head</i>	<i>Percent</i>	<i>Percent</i>
On Feed Jun 1 ¹	9,987	10,967	*11,245	113	103
Placed on Feed During Jun	1,794	1,664	1,967	110	118
Fed Cattle Marketed During Jun	2,153	2,175	2,122	99	98
Other Disappearance During Jun ²	63	57	77	122	135
On Feed Jul 1 ¹	9,565	10,399	11,013	115	106

* Revised.

¹ Cattle and calves on feed are animals for slaughter market being fed a ration of grain or other concentrates and are expected to produce a carcass that will grade select or better.

² Includes death loss, movement from feedlots to pasture, and shipments to other feedlots for further feeding.

**Cattle on Feed: Number on Feed, Placements, Marketings, and
Other Disappearance, 1,000+ Capacity Feedlots,
United States, June 1, 1999-2001**

Item	Number			2001 as % of	
	1999	2000	2001	1999	2000
	<i>1,000 Head</i>	<i>1,000 Head</i>	<i>1,000 Head</i>	<i>Percent</i>	<i>Percent</i>
On Feed May 1 ¹	10,032	10,944	11,170	111	102
Placed on Feed During May	2,049	2,305	*2,372	116	103
Fed Cattle Marketed During May	1,995	2,167	2,196	110	101
Other Disappearance During May ²	99	115	101	102	88
On Feed Jun 1 ¹	9,987	10,967	*11,245	113	103

* Revised.

¹ Cattle and calves on feed are animals for slaughter market being fed a ration of grain or other concentrates and are expected to produce a carcass that will grade select or better.

² Includes death loss, movement from feedlots to pasture, and shipments to other feedlots for further feeding.

**Cattle on Feed: Number on Feed by Class, 1,000+ Capacity Feedlots,
United States, July 1, 1999-2001**

Item	Number			2001 as % of	
	1999	2000	2001	1999	2000
	<i>1,000 Head</i>	<i>1,000 Head</i>	<i>1,000 Head</i>	<i>Percent</i>	<i>Percent</i>
Class on Feed Jul 1					
Steers and Steer Calves	5,738	6,220	6,495	113	104
Heifers and Heifer Calves	3,783	4,137	4,447	118	107
Cows and Bulls	44	42	71	161	169

**Cattle on Feed: Number on Feed, Placements, Marketings, and
Other Disappearance, 1,000+ Capacity Feedlots,
7 States, July 1, 1999-2001¹**

Item	Number			2001 as % of	
	1999	2000	2001	1999	2000
	<i>1,000 Head</i>	<i>1,000 Head</i>	<i>1,000 Head</i>	<i>Percent</i>	<i>Percent</i>
On Feed Jun 1 ²	8,547	9,441	9,660	113	102
Placed on Feed During Jun	1,515	1,413	1,690	112	120
Fed Cattle Marketed During Jun	1,835	1,848	1,824	99	99
Other Disappearance During Jun ³	44	37	60	136	162
On Feed Jul 1 ²	8,183	8,969	9,466	116	106

¹ The 7 States include AZ, CA, CO, IA, KS, NE, and TX.

² Cattle and calves on feed are animals for slaughter market being fed a ration of grain or other concentrates and are expected to produce a carcass that will grade select or better.

³ Includes death loss, movement from feedlots to pasture, and shipments to other feedlots for further feeding.

**Cattle on Feed: Number on Feed, Placements, Marketings, and
Other Disappearance, 1,000+ Capacity Feedlots,
7 States, June 1, 1999-2001¹**

Item	Number			2001 as % of	
	1999	2000	2001	1999	2000
	<i>1,000 Head</i>	<i>1,000 Head</i>	<i>1,000 Head</i>	<i>Percent</i>	<i>Percent</i>
On Feed May 1 ²	8,583	9,391	9,563	111	102
Placed on Feed During May	1,733	1,998	2,060	119	103
Fed Cattle Marketed During May	1,696	1,863	1,875	111	101
Other Disappearance During May ³	73	85	88	121	104
On Feed Jun 1 ²	8,547	9,441	9,660	113	102

¹ The 7 States include AZ, CA, CO, IA, KS, NE, and TX.

² Cattle and calves on feed are animals for slaughter market being fed a ration of grain or other concentrates and are expected to produce a carcass that will grade select or better.

³ Includes death loss, movement from feedlots to pasture, and shipments to other feedlots for further feeding.

**Cattle on Feed: Number on Feed by Class, 1,000+ Capacity Feedlots,
7 States, July 1, 1999-2001¹**

Item	Number			2001 as % of	
	1999	2000	2001	1999	2000
	<i>1,000 Head</i>	<i>1,000 Head</i>	<i>1,000 Head</i>	<i>Percent</i>	<i>Percent</i>
Class on Feed Jul 1					
Steers and Steer Calves	4,849	5,326	5,521	114	104
Heifers and Heifer Calves	3,302	3,612	3,894	118	108
Cows and Bulls	32	31	51	159	165

¹ The 7 States include AZ, CA, CO, IA, KS, NE, and TX.

**Cattle on Feed: Number on Feed, 1,000+ Capacity Feedlots,
by Month, State, and United States 2000-2001 ¹**

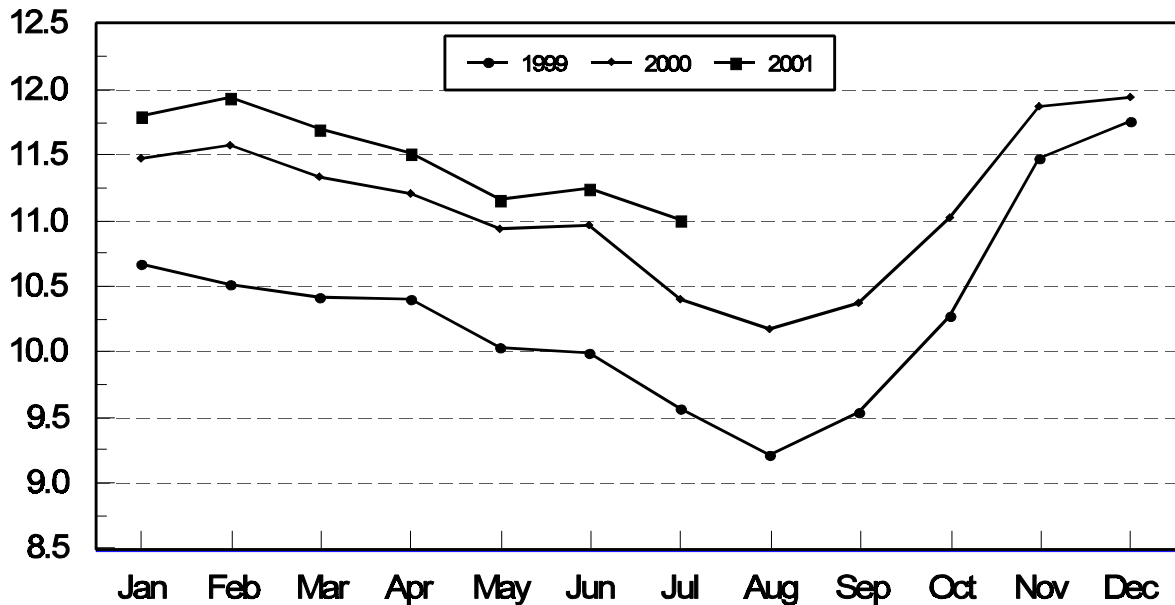
State	Jul 1, 2000	Jun 1, 2001	Jul 1, 2001		
			Number	as % of 2000	as % of Jun
	<i>1,000 Head</i>	<i>1,000 Head</i>	<i>1,000 Head</i>	<i>Percent</i>	<i>Percent</i>
AZ	274	305	291	106	95
CA	410	450	470	115	104
CO	1,100	1,160	1,110	101	96
ID	290	320	320	110	100
IA	345	365	345	100	95
KS	2,160	2,400	2,350	109	98
NE	1,950	2,090	1,900	97	91
NM	89	81	100	112	123
OK	355	*375	390	110	104
SD	144	200	175	122	88
TX	2,730	2,890	3,000	110	104
WA	202	244	227	112	93
Oth Sts	350	365	335	96	92
US	10,399	*11,245	11,013	106	98

* Revised.

¹ Cattle and calves on feed are animals for slaughter market being fed a ration of grain or other concentrates and are expected to produce a carcass that will grade select or better.

**United States Cattle on Feed
1,000+ Capacity Feedlots**

Million Head



**Cattle on Feed: Number Placed on Feed, 1,000+ Capacity Feedlots,
by Month, State, and United States 2000-2001**

State	During Jun 2000	During May 2001	During Jun 2001		
			Number	as % of 2000	as % of May
	<i>1,000 Head</i>	<i>1,000 Head</i>	<i>1,000 Head</i>	<i>Percent</i>	<i>Percent</i>
AZ	34	41	32	94	78
CA	58	77	77	133	100
CO	150	190	160	107	84
ID	60	57	69	115	121
IA	46	37	36	78	97
KS	360	530	445	124	84
NE	315	375	320	102	85
NM	15	21	32	213	152
OK	62	*115	78	126	68
SD	18	25	21	117	84
TX	450	810	620	138	77
WA	48	44	42	88	95
Oth Sts	48	50	35	73	70
US	1,664	*2,372	1,967	118	83

* Revised.

**Cattle on Feed: Number Placed on Feed by Weight Group, 1,000+ Capacity
Feedlots, by Month, State, and United States, 2000-2001**

State	During June									
	Under 600		600-699		700-799		800 Plus		Total	
	2000	2001	2000	2001	2000	2001	2000	2001	2000	2001
	<i>1,000 Head</i>	<i>1,000 Head</i>	<i>1,000 Head</i>	<i>1,000 Head</i>	<i>1,000 Head</i>	<i>1,000 Head</i>	<i>1,000 Head</i>	<i>1,000 Head</i>	<i>1,000 Head</i>	<i>1,000 Head</i>
CO	29	22	33	27	49	66	39	45	150	160
KS	60	80	80	110	110	170	110	85	360	445
NE	38	47	73	65	84	80	120	128	315	320
TX	115	145	130	175	155	210	50	90	450	620
Oth Sts	105	125	64	65	100	105	120	127	389	422
US	347	419	380	442	498	631	439	475	1,664	1,967
State	During May									
	Under 600		600-699		700-799		800 Plus		Total	
	2000	2001	2000	2001	2000	2001	2000	2001	2000	2001
	<i>1,000 Head</i>	<i>1,000 Head</i>	<i>1,000 Head</i>	<i>1,000 Head</i>	<i>1,000 Head</i>	<i>1,000 Head</i>	<i>1,000 Head</i>	<i>1,000 Head</i>	<i>1,000 Head</i>	<i>1,000 Head</i>
CO	25	24	32	45	68	69	70	52	195	190
KS	65	80	110	120	205	210	170	120	550	530
NE	32	60	59	64	161	130	138	121	390	375
TX	140	205	200	205	240	270	140	130	720	810
Oth Sts	120	*130	70	75	120	120	140	142	450	*467
US	382	*499	471	509	794	799	658	565	2,305	*2,372

* Revised.

**Cattle on Feed: Number Marketed, 1,000+ Capacity Feedlots,
by Month, State, and United States 2000-2001**

State	During Jun 2000	During May 2001	During Jun 2001		
			Number	as % of 2000	as % of May
	<i>1,000 Head</i>	<i>1,000 Head</i>	<i>1,000 Head</i>	<i>Percent</i>	<i>Percent</i>
AZ	35	34	33	94	97
CA	53	50	51	96	102
CO	250	190	205	82	108
ID	65	64	68	105	106
IA	55	51	55	100	108
KS	485	485	485	100	100
NE	460	520	500	109	96
NM	16	22	12	75	55
OK	78	83	60	77	72
SD	37	37	41	111	111
TX	510	545	495	97	91
WA	61	53	58	95	109
Oth Sts	70	62	59	84	95
US	2,175	2,196	2,122	98	97

**Cattle on Feed: Other Disappearance, 1,000+ Capacity Feedlots,
by Month, State, and United States 2000-2001 ¹**

State	During Jun 2000	During May 2001	During Jun 2001		
			Number	as % of 2000	as % of May
	<i>1,000 Head</i>	<i>1,000 Head</i>	<i>1,000 Head</i>	<i>Percent</i>	<i>Percent</i>
AZ	1	10	13	1,300	130
CA	5	12	6	120	50
CO	10	10	5	50	50
ID	10	3	1	10	33
IA	1	1	1	100	100
KS	5	25	10	200	40
NE	5	15	10	200	67
NM	0	1	1		100
OK	4	2	3	75	150
SD	2	3	5	250	167
TX	10	15	15	150	100
WA	1	1	1	100	100
Oth Sts	3	3	6	200	200
US	57	101	77	135	76

¹ Includes death loss, movement from feedlots to pasture, and shipments to other feedlots for further feeding.

**Cattle on Feed: Number on Feed by Class, 1,000+ Capacity Feedlots,
by Quarter, State, and United States, 2000-2001**

State	Steers & Steer Calves			Heifers & Heifer Calves			Cows and Bulls		
	Jul 1, 2000	Apr 1, 2001	Jul 1, 2001	Jul 1, 2000	Apr 1, 2001	Jul 1, 2001	Jul 1, 2000	Apr 1, 2001	Jul 1, 2001
	<i>1,000 Head</i>	<i>1,000 Head</i>	<i>1,000 Head</i>	<i>1,000 Head</i>	<i>1,000 Head</i>	<i>1,000 Head</i>	<i>1,000 Head</i>	<i>1,000 Head</i>	<i>1,000 Head</i>
AZ	261	300	286	13	9	5	0	0	0
CA	365	400	410	45	35	60	0	0	0
CO	620	650	615	475	535	490	5	5	5
ID	199	218	218	91	107	95	0	5	7
IA	210	245	225	135	140	119	0	0	1
KS	1,220	1,400	1,295	940	1,055	1,050	0	5	5
NE	1,120	1,330	1,025	805	970	840	25	50	35
NM	40	45	43	49	52	57	0	0	0
OK	205	210	220	149	159	170	1	1	0
SD	81	131	102	58	76	65	5	8	8
TX	1,530	1,560	1,665	1,199	1,169	1,330	1	1	5
WA	129	188	156	72	69	71	1	0	0
Oth Sts	240	280	235	106	110	95	4	5	5
US	6,220	6,957	6,495	4,137	4,486	4,447	42	80	71

Terms and Definitions of Cattle on Feed Estimates

Cattle on feed are animals being fed a ration of grain, silage, hay and/or protein supplement for slaughter market that are expected to produce a carcass that will grade select or better. It excludes cattle being "backgrounded only" for later sale as feeders or later placement in another feedlot.

Placements are cattle put into a feedlot, fed a ration which will produce a carcass that will grade select or better, and are intended for the slaughter market.

Marketings are cattle shipped out of feedlots to a slaughter market.

Other disappearance includes death loss, movement from feedlots to pasture, and shipments to other feedlots for further feeding.

Reliability of Cattle on Feed Estimates

Survey Procedures: During January and July all known feedlots in the U.S. with capacity of 1,000 or more head are surveyed to provide data for cattle on feed estimates. During the other months, all known feedlots from 17 States are surveyed. The 17 States account for 98 percent of the cattle on feed in feedlots with capacity of 1,000 or more head.

Estimating Procedures: These cattle on feed estimates were prepared by the Agricultural Statistics Board after reviewing recommendations and analysis submitted by each State office. Regional and State survey data were reviewed for reasonableness with each other and with estimates from the previous month when setting the current estimates.

Revision Policy: Revisions to previous estimates are made to improve month to month relationships. Estimates for the previous month are subject to revision in all States each month when current estimates are made. In February, all monthly estimates for the previous year, and the number of feedlots and annual marketings from two years ago are reviewed and subject to revisions. The reviews are primarily based on slaughter data, state check-off or brand data, and any other data that may have been received after the original estimate was made. Estimates will also be reviewed after data from the Census of Agriculture are available. No revisions will be made after that date and estimates become final.

Reliability: Since all 1000+ capacity cattle on feed operators in every State are not included in the monthly survey, survey estimates are subject to sampling variability. Survey results are also subject to non-sampling errors such as omissions, duplications, and mistakes in reporting, recording, and processing the data. The effects of these errors cannot be measured directly. They are minimized through rigid quality controls in the data collection process and through a careful review of all reported data for consistency and reasonableness.

The next "Cattle on Feed" report will be released at 3 p.m. ET on August 17, 2001.

The United States Department of Agriculture (USDA) prohibits discrimination in all its programs on the basis of race, color, national origin, gender, religion, age, disability, political beliefs, sexual orientation, and marital or family status. (Not all prohibited bases apply to all programs.) Persons with disabilities who require alternative means for communication of program information (braille, large print, audiotape, etc.) should contact the USDA's TARGET Center at 202-720-2600 (voice and TDD).

To file a complaint of discrimination, write USDA, Director, Office of Civil Rights, Room 326-W, Whitten Building, 1400 Independence Avenue, SW, Washington, D.C., 20250-9410, or call 202-720-5964 (voice or TDD). USDA is an equal opportunity provider and employer.

ACCESS TO REPORTS!!

For your convenience, there are several ways to obtain NASS reports, data products, and services:

INTERNET ACCESS

All NASS reports are available free of charge on the worldwide Internet. For access, connect to the Internet and go to the NASS Home Page at: <http://www.usda.gov/nass/>. Select "Today's Reports" or Publications and then Reports by Calendar or Publications and then Search, by Title or Subject.

E-MAIL SUBSCRIPTION

There are two options for subscribing via e-mail. All NASS reports are available by subscription free of charge direct to your e-mail address. 1) Starting with the NASS Home Page at <http://www.usda.gov/nass/>, click on **Publications**, then click on the **Subscribe by E-mail** button which takes you to the page describing e-mail delivery of reports. Finally, click on **Go to the Subscription Page** and follow the instructions. 2) If you do NOT have Internet access, send an e-mail message to: usda-reports@usda.mannlib.cornell.edu. In the body of the message type the word: **list**.

AUTOFAX ACCESS

NASSFax service is available for some reports from your fax machine. Please call 202-720-2000, using the handset attached to your fax. Respond to the voice prompts. Document 0411 is a list of available reports.

PRINTED REPORTS OR DATA PRODUCTS

CALL OUR TOLL-FREE ORDER DESK: 800-999-6779 (U.S. and Canada)
Other areas, please call 703-605-6000 FAX: 703-605-6900
(Visa, MasterCard, check, or money order acceptable for payment.)

ASSISTANCE

For **assistance** with general agricultural statistics or further information about NASS or its products or services, contact the **Agricultural Statistics Hotline** at **800-727-9540**, 7:30 a.m. to 4:00 p.m. ET, or e-mail: nass@nass.usda.gov.