



# Cattle on Feed

---

Released August 17, 2001, by the National Agricultural Statistics Service (NASS), Agricultural Statistics Board, U.S. Department of Agriculture. For information on "Cattle on Feed" call Steve Anderson at (202) 720-3040, office hours 7:30 a.m. to 4:00 p.m. ET.

## U.S. Cattle on Feed Up 7 Percent

**Cattle and calves on feed** for slaughter market in the United States for feedlots with capacity of 1,000 or more head totaled 10.89 million head on August 1, 2001. The inventory was 7 percent above August 1, 2000 and 18 percent above August 1, 1999.

**Placements** in feedlots during July totaled 1.99 million, 4 percent above 2000 and 10 percent above 1999. Net placements were 1.93 million. During July, placements of cattle and calves weighing less than 600 pounds were 469,000, 600-699 pounds were 444,000, 700-799 pounds were 606,000, and 800 pounds and greater were 467,000.

**Marketings** of fed cattle during July totaled 2.05 million, 2 percent below 2000 and 3 percent below 1999.

**Other disappearance** totaled 59,000 during July, 34 percent above 2000 and 13 percent above 1999.

## Cattle on Feed in Historic 7 States Up 7 Percent

**Cattle on feed** August 1, 2001, in the historic 7 States for feedlots with capacity of 1,000 or more head totaled 9.39 million, up 7 percent from the previous year and 19 percent above August 1, 1999.

**Placements** in feedlots during July totaled 1.73 million, 4 percent above 2000 and 11 percent above 1999.

**Marketings** during July totaled 1.76 million, 1 percent below 2000 and 3 percent below 1999.

**Other disappearance** during July was 51,000 head, 38 percent above 2000 and 19 percent above 1999.

**Cattle on Feed: Number on Feed, Placements, Marketings, and  
Other Disappearance, 1,000+ Capacity Feedlots,  
United States, August 1, 1999-2001**

Item	Number			2001 as % of	
	1999	2000	2001	1999	2000
	<i>1,000 Head</i>	<i>1,000 Head</i>	<i>1,000 Head</i>	<i>Percent</i>	<i>Percent</i>
On Feed Jul 1 <sup>1</sup>	9,565	10,399	*11,011	115	106
Placed on Feed During Jul	1,812	1,907	1,986	110	104
Fed Cattle Marketed During Jul	2,116	2,082	2,047	97	98
Other Disappearance During Jul <sup>2</sup>	52	44	59	113	134
On Feed Aug 1 <sup>1</sup>	9,209	10,180	10,891	118	107

\* Revised.

<sup>1</sup> Cattle and calves on feed are animals for slaughter market being fed a ration of grain or other concentrates and are expected to produce a carcass that will grade select or better.

<sup>2</sup> Includes death loss, movement from feedlots to pasture, and shipments to other feedlots for further feeding.

**Cattle on Feed: Number on Feed, Placements, Marketings, and  
Other Disappearance, 1,000+ Capacity Feedlots,  
United States, July 1, 1999-2001**

Item	Number			2001 as % of	
	1999	2000	2001	1999	2000
	<i>1,000 Head</i>	<i>1,000 Head</i>	<i>1,000 Head</i>	<i>Percent</i>	<i>Percent</i>
On Feed Jun 1 <sup>1</sup>	9,987	10,967	11,245	113	103
Placed on Feed During Jun	1,794	1,664	*1,965	110	118
Fed Cattle Marketed During Jun	2,153	2,175	2,122	99	98
Other Disappearance During Jun <sup>2</sup>	63	57	77	122	135
On Feed Jul 1 <sup>1</sup>	9,565	10,399	*11,011	115	106

\* Revised.

<sup>1</sup> Cattle and calves on feed are animals for slaughter market being fed a ration of grain or other concentrates and are expected to produce a carcass that will grade select or better.

<sup>2</sup> Includes death loss, movement from feedlots to pasture, and shipments to other feedlots for further feeding.

**Cattle on Feed: Number on Feed, Placements, Marketings, and  
Other Disappearance, 1,000+ Capacity Feedlots,  
7 States, August 1, 1999-2001<sup>1</sup>**

Item	Number			2001 as % of	
	1999	2000	2001	1999	2000
	<i>1,000 Head</i>	<i>1,000 Head</i>	<i>1,000 Head</i>	<i>Percent</i>	<i>Percent</i>
On Feed Jul 1 <sup>2</sup>	8,183	8,969	9,466	116	106
Placed on Feed During Jul	1,565	1,664	1,730	111	104
Fed Cattle Marketed During Jul	1,816	1,784	1,758	97	99
Other Disappearance During Jul <sup>3</sup>	43	37	51	119	138
On Feed Aug 1 <sup>2</sup>	7,889	8,812	9,387	119	107

<sup>1</sup> The 7 States include AZ, CA, CO, IA, KS, NE, and TX.

<sup>2</sup> Cattle and calves on feed are animals for slaughter market being fed a ration of grain or other concentrates and are expected to produce a carcass that will grade select or better.

<sup>3</sup> Includes death loss, movement from feedlots to pasture, and shipments to other feedlots for further feeding.

**Cattle on Feed: Number on Feed, Placements, Marketings, and  
Other Disappearance, 1,000+ Capacity Feedlots,  
7 States, July 1, 1999-2001<sup>1</sup>**

Item	Number			2001 as % of	
	1999	2000	2001	1999	2000
	<i>1,000 Head</i>	<i>1,000 Head</i>	<i>1,000 Head</i>	<i>Percent</i>	<i>Percent</i>
On Feed Jun 1 <sup>2</sup>	8,547	9,441	9,660	113	102
Placed on Feed During Jun	1,515	1,413	1,690	112	120
Fed Cattle Marketed During Jun	1,835	1,848	1,824	99	99
Other Disappearance During Jun <sup>3</sup>	44	37	60	136	162
On Feed Jul 1 <sup>2</sup>	8,183	8,969	9,466	116	106

<sup>1</sup> The 7 States include AZ, CA, CO, IA, KS, NE, and TX.

<sup>2</sup> Cattle and calves on feed are animals for slaughter market being fed a ration of grain or other concentrates and are expected to produce a carcass that will grade select or better.

<sup>3</sup> Includes death loss, movement from feedlots to pasture, and shipments to other feedlots for further feeding.

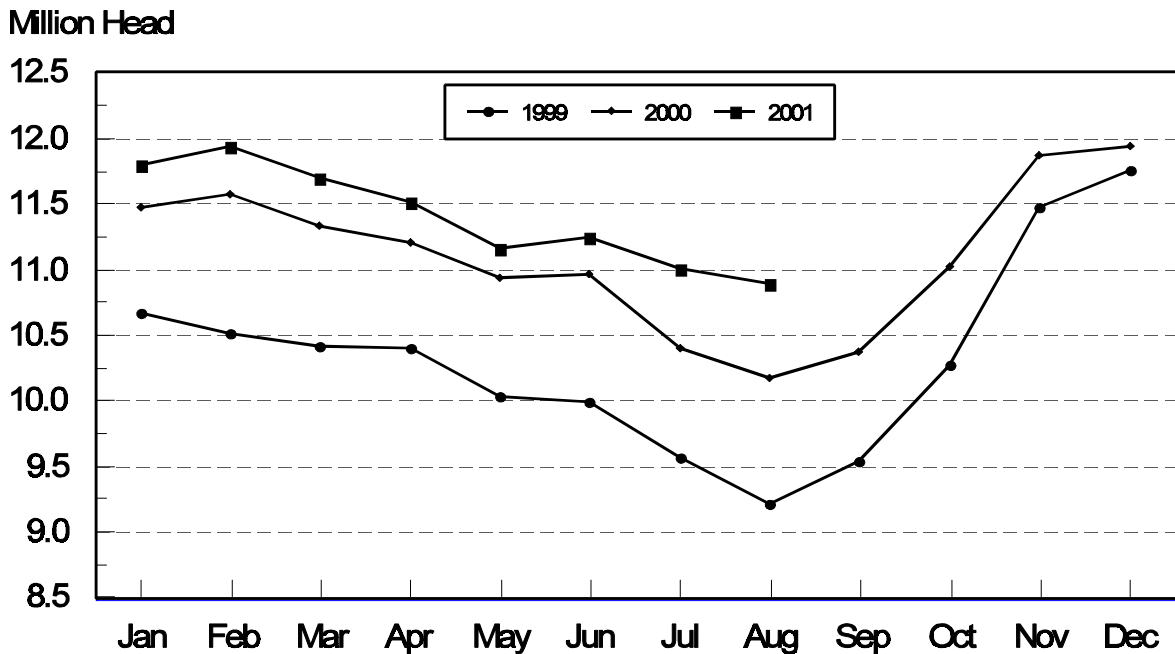
**Cattle on Feed: Number on Feed, 1,000+ Capacity Feedlots,  
by Month, State, and United States 2000-2001 <sup>1</sup>**

State	Aug 1, 2000	Jul 1, 2001	Aug 1, 2001		
			Number	as % of 2000	as % of Jul
	<i>1,000 Head</i>	<i>1,000 Head</i>	<i>1,000 Head</i>	<i>Percent</i>	<i>Percent</i>
AZ	262	291	297	113	102
CA	420	470	475	113	101
CO	1,050	1,110	1,060	101	95
ID	280	320	310	111	97
IA	330	345	325	98	94
KS	2,190	2,350	2,420	111	103
NE	1,840	1,900	1,810	98	95
NM	93	*98	101	109	103
OK	355	390	390	110	100
SD	126	175	154	122	88
TX	2,720	3,000	3,000	110	100
WA	194	227	229	118	101
Oth Sts	320	335	320	100	96
US	10,180	*11,011	10,891	107	99

\* Revised.

<sup>1</sup> Cattle and calves on feed are animals for slaughter market being fed a ration of grain or other concentrates and are expected to produce a carcass that will grade select or better.

**United States Cattle on Feed  
1,000+ Capacity Feedlots**



**Cattle on Feed: Number Placed on Feed, 1,000+ Capacity Feedlots,  
by Month, State, and United States 2000-2001**

State	During Jul 2000	During Jun 2001	During Jul 2001		
			Number	as % of 2000	as % of Jun
	<i>1,000 Head</i>	<i>1,000 Head</i>	<i>1,000 Head</i>	<i>Percent</i>	<i>Percent</i>
AZ	24	32	44	183	138
CA	60	77	56	93	73
CO	185	160	195	105	122
ID	56	69	60	107	87
IA	40	36	35	88	97
KS	510	445	570	112	128
NE	325	320	320	98	100
NM	19	*30	13	68	43
OK	63	78	68	108	87
SD	16	21	14	88	67
TX	520	620	510	98	82
WA	49	42	61	124	145
Oth Sts	40	35	40	100	114
US	1,907	*1,965	1,986	104	101

\* Revised.

**Cattle on Feed: Number Placed on Feed by Weight Group, 1,000+ Capacity  
Feedlots, by Month, State, and United States, 2000-2001**

State	During July									
	Under 600		600-699		700-799		800 Plus		Total	
	2000	2001	2000	2001	2000	2001	2000	2001	2000	2001
	<i>1,000 Head</i>	<i>1,000 Head</i>	<i>1,000 Head</i>	<i>1,000 Head</i>	<i>1,000 Head</i>	<i>1,000 Head</i>	<i>1,000 Head</i>	<i>1,000 Head</i>	<i>1,000 Head</i>	<i>1,000 Head</i>
CO	23	30	30	46	72	67	60	52	185	195
KS	90	85	110	160	195	210	115	115	510	570
NE	41	39	54	58	110	109	120	114	325	320
TX	170	190	135	120	135	140	80	60	520	510
Oth Sts	100	125	57	60	80	80	130	126	367	391
US	424	469	386	444	592	606	505	467	1,907	1,986
State	During June									
	Under 600		600-699		700-799		800 Plus		Total	
	2000	2001	2000	2001	2000	2001	2000	2001	2000	2001
	<i>1,000 Head</i>	<i>1,000 Head</i>	<i>1,000 Head</i>	<i>1,000 Head</i>	<i>1,000 Head</i>	<i>1,000 Head</i>	<i>1,000 Head</i>	<i>1,000 Head</i>	<i>1,000 Head</i>	<i>1,000 Head</i>
CO	29	22	33	27	49	66	39	45	150	160
KS	60	80	80	110	110	170	110	85	360	445
NE	38	47	73	65	84	80	120	128	315	320
TX	115	145	130	175	155	210	50	90	450	620
Oth Sts	105	125	64	65	100	105	120	*125	389	*420
US	347	419	380	442	498	631	439	*473	1,664	*1,965

\* Revised.

**Cattle on Feed: Number Marketed, 1,000+ Capacity Feedlots,  
by Month, State, and United States 2000-2001**

State	During Jul 2000	During Jun 2001	During Jul 2001		
			Number	as % of 2000	as % of Jun
	<i>1,000 Head</i>	<i>1,000 Head</i>	<i>1,000 Head</i>	<i>Percent</i>	<i>Percent</i>
AZ	35	33	36	103	109
CA	45	51	48	107	94
CO	230	205	240	104	117
ID	65	68	69	106	101
IA	54	55	54	100	98
KS	470	485	485	103	100
NE	430	500	400	93	80
NM	12	12	9	75	75
OK	62	60	66	106	110
SD	33	41	34	103	83
TX	520	495	495	95	100
WA	57	58	58	102	100
Oth Sts	69	59	53	77	90
US	2,082	2,122	2,047	98	96

**Cattle on Feed: Other Disappearance, 1,000+ Capacity Feedlots,  
by Month, State, and United States 2000-2001 <sup>1</sup>**

State	During Jul 2000	During Jun 2001	During Jul 2001		
			Number	as % of 2000	as % of Jun
	<i>1,000 Head</i>	<i>1,000 Head</i>	<i>1,000 Head</i>	<i>Percent</i>	<i>Percent</i>
AZ	1	13	2	200	15
CA	5	6	3	60	50
CO	5	5	5	100	100
ID	1	1	1	100	100
IA	1	1	1	100	100
KS	10	10	15	150	150
NE	5	10	10	200	100
NM	3	1	1	33	100
OK	1	3	2	200	67
SD	1	5	1	100	20
TX	10	15	15	150	100
WA	0	1	1		100
Oth Sts	1	6	2	200	33
US	44	77	59	134	77

<sup>1</sup> Includes death loss, movement from feedlots to pasture, and shipments to other feedlots for further feeding.

## Terms and Definitions of Cattle on Feed Estimates

**Cattle on feed** are animals being fed a ration of grain, silage, hay and/or protein supplement for slaughter market that are expected to produce a carcass that will grade select or better. It excludes cattle being "backgrounded only" for later sale as feeders or later placement in another feedlot.

**Placements** are cattle put into a feedlot, fed a ration which will produce a carcass that will grade select or better, and are intended for the slaughter market.

**Marketings** are cattle shipped out of feedlots to a slaughter market.

**Other disappearance** includes death loss, movement from feedlots to pasture, and shipments to other feedlots for further feeding.

## Reliability of Cattle on Feed Estimates

**Survey Procedures:** During January and July all known feedlots in the U.S. with capacity of 1,000 or more head are surveyed to provide data for cattle on feed estimates. During the other months, all known feedlots from 17 States are surveyed. The 17 States account for 98 percent of the cattle on feed in feedlots with capacity of 1,000 or more head.

**Estimating Procedures:** These cattle on feed estimates were prepared by the Agricultural Statistics Board after reviewing recommendations and analysis submitted by each State office. Regional and State survey data were reviewed for reasonableness with each other and with estimates from the previous month when setting the current estimates.

**Revision Policy:** Revisions to previous estimates are made to improve month to month relationships. Estimates for the previous month are subject to revision in all States each month when current estimates are made. In February, all monthly estimates for the previous year, and the number of feedlots and annual marketings from two years ago are reviewed and subject to revisions. The reviews are primarily based on slaughter data, state check-off or brand data, and any other data that may have been received after the original estimate was made. Estimates will also be reviewed after data from the Census of Agriculture are available. No revisions will be made after that date and estimates become final.

**Reliability:** Since all 1000+ capacity cattle on feed operators in every State are not included in the monthly survey, survey estimates are subject to sampling variability. Survey results are also subject to non-sampling errors such as omissions, duplications, and mistakes in reporting, recording, and processing the data. The effects of these errors cannot be measured directly. They are minimized through rigid quality controls in the data collection process and through a careful review of all reported data for consistency and reasonableness.

The next "Cattle on Feed" report will be released at 3 p.m. ET on September 21, 2001.

The United States Department of Agriculture (USDA) prohibits discrimination in all its programs on the basis of race, color, national origin, gender, religion, age, disability, political beliefs, sexual orientation, and marital or family status. (Not all prohibited bases apply to all programs.) Persons with disabilities who require alternative means for communication of program information (braille, large print, audiotape, etc.) should contact the USDA's TARGET Center at 202-720-2600 (voice and TDD).

To file a complaint of discrimination, write USDA, Director, Office of Civil Rights, Room 326-W, Whitten Building, 1400 Independence Avenue, SW, Washington, D.C., 20250-9410, or call 202-720-5964 (voice or TDD). USDA is an equal opportunity provider and employer.

## **ACCESS TO REPORTS!!**

---

For your convenience, there are several ways to obtain NASS reports, data products, and services:

### **INTERNET ACCESS**

All NASS reports are available free of charge on the worldwide Internet. For access, connect to the Internet and go to the NASS Home Page at: <http://www.usda.gov/nass/>. Select "Today's Reports" or Publications and then Reports by Calendar or Publications and then Search, by Title or Subject.

### **E-MAIL SUBSCRIPTION**

There are two options for subscribing via e-mail. All NASS reports are available by subscription free of charge direct to your e-mail address. 1) Starting with the NASS Home Page at <http://www.usda.gov/nass/>, click on **Publications**, then click on the **Subscribe by E-mail** button which takes you to the page describing e-mail delivery of reports. Finally, click on **Go to the Subscription Page** and follow the instructions. 2) If you do NOT have Internet access, send an e-mail message to: [usda-reports@usda.mannlib.cornell.edu](mailto:usda-reports@usda.mannlib.cornell.edu). In the body of the message type the word: **list**.

### **AUTOFAX ACCESS**

NASSFax service is available for some reports from your fax machine. Please call 202-720-2000, using the handset attached to your fax. Respond to the voice prompts. Document 0411 is a list of available reports.

-----  
**PRINTED REPORTS OR DATA PRODUCTS**

**CALL OUR TOLL-FREE ORDER DESK: 800-999-6779 (U.S. and Canada)**  
**Other areas, please call 703-605-6220      FAX: 703-605-6900**  
**(Visa, MasterCard, check, or money order acceptable for payment.)**

-----

### **ASSISTANCE**

For **assistance** with general agricultural statistics or further information about NASS or its products or services, contact the **Agricultural Statistics Hotline** at **800-727-9540**, 7:30 a.m. to 4:00 p.m. ET, or e-mail: [nass@nass.usda.gov](mailto:nass@nass.usda.gov).



USDA to Hold Public Forum  
October 15, 2001

Holiday Inn Mart Plaza  
Chicago, Illinois

The National Agricultural Statistics Service will be organizing an open forum for data users. The purpose will be to provide updates on pending changes in the various statistical and information programs and to seek comments and input from data users. The other USDA agencies to be represented will include the Agricultural Marketing Service, the Economic Research Service, the Foreign Agricultural Service, and the World Agricultural Outlook Board. The Foreign Trade Division from the Census Bureau and the National Weather Service will also be included in the meeting.

For registration details for the Data User's meeting, see the NASS home page at <http://www.usda.gov/nass/> Or contact Karlyn McCutcheon (NASS) at (202) 690-8141 or at [karlyn\\_mccutcheon@nass.usda.gov](mailto:karlyn_mccutcheon@nass.usda.gov).

This Public Forum precedes an Industry Outlook meeting that will be held at the same location on October 16, 2001. The outlook meeting brings together analysts from the various commodity sectors to discuss the outlook situation. For more information about the outlook meeting and to register for it contact Terry Francl at (847) 685-8769 or at [terry@fb.org](mailto:terry@fb.org).