



Cattle on Feed

Released September 21, 2001, by the National Agricultural Statistics Service (NASS), Agricultural Statistics Board, U.S. Department of Agriculture. For information on "Cattle on Feed" call Steve Anderson at (202) 720-3040, office hours 7:30 a.m. to 4:00 p.m. ET.

U.S. Cattle on Feed Up 5 Percent

Cattle and calves on feed for slaughter market in the United States for feedlots with capacity of 1,000 or more head totaled 10.87 million head on September 1, 2001. The inventory was 5 percent above September 1, 2000 and 14 percent above September 1, 1999.

Placements in feedlots during August totaled 2.20 million, 10 percent below 2000 and 9 percent below 1999. Net placements were 2.15 million. During August, placements of cattle and calves weighing less than 600 pounds were 510,000, 600-699 pounds were 472,000, 700-799 pounds were 667,000, and 800 pounds and greater were 555,000.

Marketings of fed cattle during August totaled 2.18 million, 1 percent below 2000 but 6 percent above 1999.

Other disappearance totaled 54,000 during August, 10 percent above 2000 but 2 percent below 1999.

Cattle on Feed in Historic 7 States Up 5 Percent

Cattle on feed September 1, 2001, in the historic 7 States for feedlots with capacity of 1,000 or more head totaled 9.39 million, up 5 percent from the previous year and 15 percent above September 1, 1999.

Placements in feedlots during August totaled 1.91 million, 9 percent below 2000 and 1999.

Marketings during August totaled 1.85 million, 2 percent below 2000 but 6 percent above 1999.

Other disappearance during August was 46,000 head, 28 percent above 2000 and 10 percent above 1999.

**Cattle on Feed: Number on Feed, Placements, Marketings, and
Other Disappearance, 1,000+ Capacity Feedlots,
United States, September 1, 1999-2001**

Item	Number			2001 as % of	
	1999	2000	2001	1999	2000
	<i>1,000 Head</i>	<i>1,000 Head</i>	<i>1,000 Head</i>	<i>Percent</i>	<i>Percent</i>
On Feed Aug 1 ¹	9,209	10,180	10,891	118	107
Placed on Feed During Aug	2,428	2,440	2,204	91	90
Fed Cattle Marketed During Aug	2,046	2,197	2,176	106	99
Other Disappearance During Aug ²	55	49	54	98	110
On Feed Sep 1 ¹	9,536	10,374	10,865	114	105

¹ Cattle and calves on feed are animals for slaughter market being fed a ration of grain or other concentrates and are expected to produce a carcass that will grade select or better.

² Includes death loss, movement from feedlots to pasture, and shipments to other feedlots for further feeding.

**Cattle on Feed: Number on Feed, Placements, Marketings, and
Other Disappearance, 1,000+ Capacity Feedlots,
United States, August 1, 1999-2001**

Item	Number			2001 as % of	
	1999	2000	2001	1999	2000
	<i>1,000 Head</i>	<i>1,000 Head</i>	<i>1,000 Head</i>	<i>Percent</i>	<i>Percent</i>
On Feed Jul 1 ¹	9,565	10,399	11,011	115	106
Placed on Feed During Jul	1,812	1,907	1,986	110	104
Fed Cattle Marketed During Jul	2,116	2,082	2,047	97	98
Other Disappearance During Jul ²	52	44	59	113	134
On Feed Aug 1 ¹	9,209	10,180	10,891	118	107

¹ Cattle and calves on feed are animals for slaughter market being fed a ration of grain or other concentrates and are expected to produce a carcass that will grade select or better.

² Includes death loss, movement from feedlots to pasture, and shipments to other feedlots for further feeding.

**Cattle on Feed: Number on Feed, Placements, Marketings, and
Other Disappearance, 1,000+ Capacity Feedlots,
7 States, September 1, 1999-2001 ¹**

Item	Number			2001 as % of	
	1999	2000	2001	1999	2000
	<i>1,000 Head</i>	<i>1,000 Head</i>	<i>1,000 Head</i>	<i>Percent</i>	<i>Percent</i>
On Feed Aug 1 ²	7,889	8,812	9,387	119	107
Placed on Feed During Aug	2,085	2,091	1,906	91	91
Fed Cattle Marketed During Aug	1,747	1,895	1,854	106	98
Other Disappearance During Aug ³	42	36	46	110	128
On Feed Sep 1 ²	8,185	8,972	9,393	115	105

¹ The 7 States include AZ, CA, CO, IA, KS, NE, and TX.

² Cattle and calves on feed are animals for slaughter market being fed a ration of grain or other concentrates and are expected to produce a carcass that will grade select or better.

³ Includes death loss, movement from feedlots to pasture, and shipments to other feedlots for further feeding.

**Cattle on Feed: Number on Feed, Placements, Marketings, and
Other Disappearance, 1,000+ Capacity Feedlots,
7 States, August 1, 1999-2001 ¹**

Item	Number			2001 as % of	
	1999	2000	2001	1999	2000
	<i>1,000 Head</i>	<i>1,000 Head</i>	<i>1,000 Head</i>	<i>Percent</i>	<i>Percent</i>
On Feed Jul 1 ²	8,183	8,969	9,466	116	106
Placed on Feed During Jul	1,565	1,664	1,730	111	104
Fed Cattle Marketed During Jul	1,816	1,784	1,758	97	99
Other Disappearance During Jul ³	43	37	51	119	138
On Feed Aug 1 ²	7,889	8,812	9,387	119	107

¹ The 7 States include AZ, CA, CO, IA, KS, NE, and TX.

² Cattle and calves on feed are animals for slaughter market being fed a ration of grain or other concentrates and are expected to produce a carcass that will grade select or better.

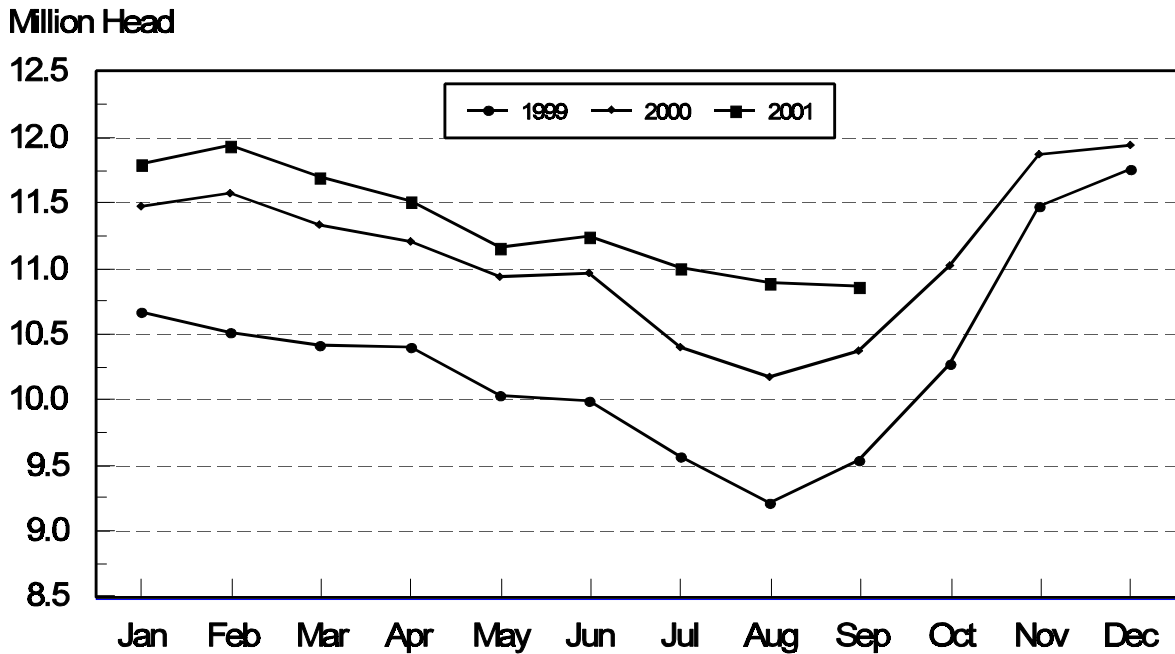
³ Includes death loss, movement from feedlots to pasture, and shipments to other feedlots for further feeding.

**Cattle on Feed: Number on Feed, 1,000+ Capacity Feedlots,
by Month, State, and United States 2000-2001 ¹**

State	Sep 1, 2000	Aug 1, 2001	Sep 1, 2001		
			Number	as % of 2000	as % of Aug
	<i>1,000 Head</i>	<i>1,000 Head</i>	<i>1,000 Head</i>	<i>Percent</i>	<i>Percent</i>
AZ	257	297	293	114	99
CA	415	475	470	113	99
CO	1,070	1,060	1,020	95	96
ID	290	310	305	105	98
IA	330	325	310	94	95
KS	2,220	2,420	2,490	112	103
NE	1,920	1,810	1,820	95	101
NM	90	101	96	107	95
OK	375	390	395	105	101
SD	128	154	140	109	91
TX	2,760	3,000	2,990	108	100
WA	204	229	231	113	101
Oth Sts	315	320	305	97	95
US	10,374	10,891	10,865	105	100

¹ Cattle and calves on feed are animals for slaughter market being fed a ration of grain or other concentrates and are expected to produce a carcass that will grade select or better.

**United States Cattle on Feed
1,000+ Capacity Feedlots**



**Cattle on Feed: Number Placed on Feed, 1,000+ Capacity Feedlots,
by Month, State, and United States 2000-2001**

State	During Aug 2000	During Jul 2001	During Aug 2001		
			Number	as % of 2000	as % of Jul
	<i>1,000 Head</i>	<i>1,000 Head</i>	<i>1,000 Head</i>	<i>Percent</i>	<i>Percent</i>
AZ	29	44	32	110	73
CA	56	56	50	89	89
CO	300	195	210	70	108
ID	73	60	70	96	117
IA	51	35	39	76	111
KS	530	570	570	108	100
NE	495	320	435	88	136
NM	18	13	12	67	92
OK	98	68	78	80	115
SD	35	14	21	60	150
TX	630	510	570	90	112
WA	58	61	61	105	100
Oth Sts	67	40	56	84	140
US	2,440	1,986	2,204	90	111

**Cattle on Feed: Number Placed on Feed by Weight Group, 1,000+ Capacity
Feedlots, by Month, State, and United States, 2000-2001**

State	During August									
	Under 600		600-699		700-799		800 Plus		Total	
	2000	2001	2000	2001	2000	2001	2000	2001	2000	2001
	<i>1,000 Head</i>	<i>1,000 Head</i>	<i>1,000 Head</i>	<i>1,000 Head</i>	<i>1,000 Head</i>	<i>1,000 Head</i>	<i>1,000 Head</i>	<i>1,000 Head</i>	<i>1,000 Head</i>	<i>1,000 Head</i>
CO	33	29	56	38	101	73	110	70	300	210
KS	115	95	120	145	175	220	120	110	530	570
NE	60	51	83	60	145	144	207	180	495	435
TX	230	220	170	165	165	125	65	60	630	570
Oth Sts	135	115	75	64	105	105	170	135	485	419
US	573	510	504	472	691	667	672	555	2,440	2,204
	During July									
	Under 600		600-699		700-799		800 Plus		Total	
	2000	2001	2000	2001	2000	2001	2000	2001	2000	2001
	<i>1,000 Head</i>	<i>1,000 Head</i>	<i>1,000 Head</i>	<i>1,000 Head</i>	<i>1,000 Head</i>	<i>1,000 Head</i>	<i>1,000 Head</i>	<i>1,000 Head</i>	<i>1,000 Head</i>	<i>1,000 Head</i>
CO	23	30	30	46	72	67	60	52	185	195
KS	90	85	110	160	195	210	115	115	510	570
NE	41	39	54	58	110	109	120	114	325	320
TX	170	190	135	120	135	140	80	60	520	510
Oth Sts	100	125	57	60	80	80	130	126	367	391
US	424	469	386	444	592	606	505	467	1,907	1,986

**Cattle on Feed: Number Marketed, 1,000+ Capacity Feedlots,
by Month, State, and United States 2000-2001**

State	During Aug 2000	During Jul 2001	During Aug 2001		
			Number	as % of 2000	as % of Jul
	<i>1,000 Head</i>	<i>1,000 Head</i>	<i>1,000 Head</i>	<i>Percent</i>	<i>Percent</i>
AZ	33	36	34	103	94
CA	57	48	52	91	108
CO	275	240	245	89	102
ID	60	69	74	123	107
IA	50	54	53	106	98
KS	490	485	490	100	101
NE	410	400	420	102	105
NM	17	9	15	88	167
OK	76	66	71	93	108
SD	32	34	34	106	100
TX	580	495	560	97	113
WA	47	58	58	123	100
Oth Sts	70	53	70	100	132
US	2,197	2,047	2,176	99	106

**Cattle on Feed: Other Disappearance, 1,000+ Capacity Feedlots,
by Month, State, and United States 2000-2001 ¹**

State	During Aug 2000	During Jul 2001	During Aug 2001		
			Number	as % of 2000	as % of Jul
	<i>1,000 Head</i>	<i>1,000 Head</i>	<i>1,000 Head</i>	<i>Percent</i>	<i>Percent</i>
AZ	1	2	2	200	100
CA	4	3	3	75	100
CO	5	5	5	100	100
ID	3	1	1	33	100
IA	1	1	1	100	100
KS	10	15	10	100	67
NE	5	10	5	100	50
NM	4	1	2	50	200
OK	2	2	2	100	100
SD	1	1	1	100	100
TX	10	15	20	200	133
WA	1	1	1	100	100
Oth Sts	2	2	1	50	50
US	49	59	54	110	92

¹ Includes death loss, movement from feedlots to pasture, and shipments to other feedlots for further feeding.

Terms and Definitions of Cattle on Feed Estimates

Cattle on feed are animals being fed a ration of grain, silage, hay and/or protein supplement for slaughter market that are expected to produce a carcass that will grade select or better. It excludes cattle being "backgrounded only" for later sale as feeders or later placement in another feedlot.

Placements are cattle put into a feedlot, fed a ration which will produce a carcass that will grade select or better, and are intended for the slaughter market.

Marketings are cattle shipped out of feedlots to a slaughter market.

Other disappearance includes death loss, movement from feedlots to pasture, and shipments to other feedlots for further feeding.

Reliability of Cattle on Feed Estimates

Survey Procedures: During January and July all known feedlots in the U.S. with capacity of 1,000 or more head are surveyed to provide data for cattle on feed estimates. During the other months, all known feedlots from 17 States are surveyed. The 17 States account for 98 percent of the cattle on feed in feedlots with capacity of 1,000 or more head.

Estimating Procedures: These cattle on feed estimates were prepared by the Agricultural Statistics Board after reviewing recommendations and analysis submitted by each State office. Regional and State survey data were reviewed for reasonableness with each other and with estimates from the previous month when setting the current estimates.

Revision Policy: Revisions to previous estimates are made to improve month to month relationships. Estimates for the previous month are subject to revision in all States each month when current estimates are made. In February, all monthly estimates for the previous year, and the number of feedlots and annual marketings from two years ago are reviewed and subject to revisions. The reviews are primarily based on slaughter data, state check-off or brand data, and any other data that may have been received after the original estimate was made. Estimates will also be reviewed after data from the Census of Agriculture are available. No revisions will be made after that date and estimates become final.

Reliability: Since all 1000+ capacity cattle on feed operators in every State are not included in the monthly survey, survey estimates are subject to sampling variability. Survey results are also subject to non-sampling errors such as omissions, duplications, and mistakes in reporting, recording, and processing the data. The effects of these errors cannot be measured directly. They are minimized through rigid quality controls in the data collection process and through a careful review of all reported data for consistency and reasonableness.

The next "Cattle on Feed" report will be released at 3 p.m. ET on October 19, 2001.

The United States Department of Agriculture (USDA) prohibits discrimination in all its programs on the basis of race, color, national origin, gender, religion, age, disability, political beliefs, sexual orientation, and marital or family status. (Not all prohibited bases apply to all programs.) Persons with disabilities who require alternative means for communication of program information (braille, large print, audiotape, etc.) should contact the USDA's TARGET Center at 202-720-2600 (voice and TDD).

To file a complaint of discrimination, write USDA, Director, Office of Civil Rights, Room 326-W, Whitten Building, 1400 Independence Avenue, SW, Washington, D.C., 20250-9410, or call 202-720-5964 (voice or TDD). USDA is an equal opportunity provider and employer.

ACCESS TO REPORTS!!

For your convenience, there are several ways to obtain NASS reports, data products, and services:

INTERNET ACCESS

All NASS reports are available free of charge on the worldwide Internet. For access, connect to the Internet and go to the NASS Home Page at: <http://www.usda.gov/nass/>. Select "Today's Reports" or Publications and then Reports by Calendar or Publications and then Search, by Title or Subject.

E-MAIL SUBSCRIPTION

There are two options for subscribing via e-mail. All NASS reports are available by subscription free of charge direct to your e-mail address. 1) Starting with the NASS Home Page at <http://www.usda.gov/nass/>, click on **Publications**, then click on the **Subscribe by E-mail** button which takes you to the page describing e-mail delivery of reports. Finally, click on **Go to the Subscription Page** and follow the instructions. 2) If you do NOT have Internet access, send an e-mail message to: usda-reports@usda.mannlib.cornell.edu. In the body of the message type the word: **list**.

AUTOFAX ACCESS

NASSFax service is available for some reports from your fax machine. Please call 202-720-2000, using the handset attached to your fax. Respond to the voice prompts. Document 0411 is a list of available reports.

PRINTED REPORTS OR DATA PRODUCTS

CALL OUR TOLL-FREE ORDER DESK: 800-999-6779 (U.S. and Canada)
Other areas, please call 703-605-6220 FAX: 703-605-6900
(Visa, MasterCard, check, or money order acceptable for payment.)

ASSISTANCE

For **assistance** with general agricultural statistics or further information about NASS or its products or services, contact the **Agricultural Statistics Hotline** at **800-727-9540**, 7:30 a.m. to 4:00 p.m. ET, or e-mail: nass@nass.usda.gov.

USDA to Hold Public Forum
October 15, 2001

Holiday Inn Mart Plaza
Chicago, Illinois

The National Agricultural Statistics Service will be organizing an open forum for data users. The purpose will be to provide updates on pending changes in the various statistical and information programs and to seek comments and input from data users. The other USDA agencies to be represented will include the Agricultural Marketing Service, the Economic Research Service, the Foreign Agricultural Service, and the World Agricultural Outlook Board. The Foreign Trade Division from the Census Bureau and the National Weather Service will also be included in the meeting.

For registration details for the Data User's meeting, see the NASS home page at <http://www.usda.gov/nass/> Or contact Karlyn McCutcheon (NASS) at (202) 690-8141 or at karlyn_mccutcheon@nass.usda.gov.

This Public Forum precedes an Industry Outlook meeting that will be held at the same location on October 16, 2001. The outlook meeting brings together analysts from the various commodity sectors to discuss the outlook situation. For more information about the outlook meeting and to register for it contact Terry Francl at (847) 685-8769 or at terry@fb.org.