



Cattle on Feed

Released October 19, 2001, by the National Agricultural Statistics Service (NASS), Agricultural Statistics Board, U.S. Department of Agriculture. For information on "Cattle on Feed" call Steve Anderson at (202) 720-3040, office hours 7:30 a.m. to 4:00 p.m. ET.

U.S. Cattle on Feed Up 1 Percent

Cattle and calves on feed for slaughter market in the United States for feedlots with capacity of 1,000 or more head totaled 11.1 million head on October 1, 2001. The inventory was 1 percent above October 1, 2000 and 8 percent above October 1, 1999. The inventory included 6.63 million steers and steer calves, up 1 percent from the previous year. This group accounted for 60 percent of the total inventory. Heifers and heifer calves accounted for 4.45 million head, up 1 percent from 2000.

Placements in feedlots during September totaled 2.14 million, 20 percent below 2000 and 23 percent below 1999. Net placements were 2.09 million. During September, placements of cattle and calves weighing less than 600 pounds were 528,000, 600-699 pounds were 447,000, 700-799 pounds were 559,000, and 800 pounds and greater were 602,000.

Marketings of fed cattle during September totaled 1.82 million, 9 percent below 2000 and 7 percent below 1999.

Other disappearance totaled 46,000 during September, 15 percent below 2000 and 26 percent below 1999.

Cattle on Feed in Historic 7 States Up 1 Percent

Cattle on feed October 1, 2001, in the historic 7 States for feedlots with capacity of 1,000 or more head totaled 9.61 million, up 1 percent from the previous year and 9 percent above October 1, 1999. The inventory included 5.69 million steers and steer calves, up 2 percent from the previous year. This group accounted for 59 percent of the total inventory. Heifers and heifer calves accounted for 3.88 million head, up slightly from 2000.

Placements in feedlots during September totaled 1.81 million, 21 percent below 2000 and 23 percent below 1999.

Marketings during September totaled 1.54 million, 10 percent below 2000 and 9 percent below 1999.

Other disappearance during September was 40,000 head, 17 percent below 2000 and 27 percent below 1999.

**Cattle on Feed: Number on Feed, Placements, Marketings, and
Other Disappearance, 1,000+ Capacity Feedlots,
United States, October 1, 1999-2001**

Item	Number			2001 as % of	
	1999	2000	2001	1999	2000
	<i>1,000 Head</i>	<i>1,000 Head</i>	<i>1,000 Head</i>	<i>Percent</i>	<i>Percent</i>
On Feed Sep 1 ¹	9,536	10,374	*10,855	114	105
Placed on Feed During Sep	2,759	2,686	2,136	77	80
Fed Cattle Marketed During Sep	1,957	1,990	1,820	93	91
Other Disappearance During Sep ²	62	54	46	74	85
On Feed Oct 1 ¹	10,276	11,016	11,125	108	101

* Revised.

¹ Cattle and calves on feed are animals for slaughter market being fed a ration of grain or other concentrates and are expected to produce a carcass that will grade select or better.

² Includes death loss, movement from feedlots to pasture, and shipments to other feedlots for further feeding.

**Cattle on Feed: Number on Feed, Placements, Marketings, and
Other Disappearance, 1,000+ Capacity Feedlots,
United States, September 1, 1999-2001**

Item	Number			2001 as % of	
	1999	2000	2001	1999	2000
	<i>1,000 Head</i>	<i>1,000 Head</i>	<i>1,000 Head</i>	<i>Percent</i>	<i>Percent</i>
On Feed Aug 1 ¹	9,209	10,180	10,891	118	107
Placed on Feed During Aug	2,428	2,440	2,204	91	90
Fed Cattle Marketed During Aug	2,046	2,197	*2,186	107	99
Other Disappearance During Aug ²	55	49	54	98	110
On Feed Sep 1 ¹	9,536	10,374	*10,855	114	105

* Revised.

¹ Cattle and calves on feed are animals for slaughter market being fed a ration of grain or other concentrates and are expected to produce a carcass that will grade select or better.

² Includes death loss, movement from feedlots to pasture, and shipments to other feedlots for further feeding.

**Cattle on Feed: Number on Feed by Class, 1,000+ Capacity Feedlots,
United States, October 1, 1999-2001**

Item	Number			2001 as % of	
	1999	2000	2001	1999	2000
	<i>1,000 Head</i>	<i>1,000 Head</i>	<i>1,000 Head</i>	<i>Percent</i>	<i>Percent</i>
Class on Feed Oct 1					
Steers and Steer Calves	6,218	6,562	6,627	107	101
Heifers and Heifer Calves	4,021	4,401	4,447	111	101
Cows and Bulls	37	53	51	138	96

**Cattle on Feed: Number on Feed, Placements, Marketings, and
Other Disappearance, 1,000+ Capacity Feedlots,
7 States, October 1, 1999-2001¹**

Item	Number			2001 as % of	
	1999	2000	2001	1999	2000
	<i>1,000 Head</i>	<i>1,000 Head</i>	<i>1,000 Head</i>	<i>Percent</i>	<i>Percent</i>
On Feed Sep 1 ²	8,185	8,972	*9,383	115	105
Placed on Feed During Sep	2,345	2,286	1,806	77	79
Fed Cattle Marketed During Sep	1,682	1,708	1,536	91	90
Other Disappearance During Sep ³	55	48	40	73	83
On Feed Oct 1 ²	8,793	9,502	9,613	109	101

* Revised.

¹ The 7 States include AZ, CA, CO, IA, KS, NE, and TX.

² Cattle and calves on feed are animals for slaughter market being fed a ration of grain or other concentrates and are expected to produce a carcass that will grade select or better.

³ Includes death loss, movement from feedlots to pasture, and shipments to other feedlots for further feeding.

**Cattle on Feed: Number on Feed, Placements, Marketings, and
Other Disappearance, 1,000+ Capacity Feedlots,
7 States, September 1, 1999-2001¹**

Item	Number			2001 as % of	
	1999	2000	2001	1999	2000
	<i>1,000 Head</i>	<i>1,000 Head</i>	<i>1,000 Head</i>	<i>Percent</i>	<i>Percent</i>
On Feed Aug 1 ²	7,889	8,812	9,387	119	107
Placed on Feed During Aug	2,085	2,091	1,906	91	91
Fed Cattle Marketed During Aug	1,747	1,895	*1,864	107	98
Other Disappearance During Aug ³	42	36	46	110	128
On Feed Sep 1 ²	8,185	8,972	*9,383	115	105

* Revised.

¹ The 7 States include AZ, CA, CO, IA, KS, NE, and TX.

² Cattle and calves on feed are animals for slaughter market being fed a ration of grain or other concentrates and are expected to produce a carcass that will grade select or better.

³ Includes death loss, movement from feedlots to pasture, and shipments to other feedlots for further feeding.

**Cattle on Feed: Number on Feed by Class, 1,000+ Capacity Feedlots,
7 States, October 1, 1999-2001¹**

Item	Number			2001 as % of	
	1999	2000	2001	1999	2000
	<i>1,000 Head</i>	<i>1,000 Head</i>	<i>1,000 Head</i>	<i>Percent</i>	<i>Percent</i>
Class on Feed Oct 1					
Steers and Steer Calves	5,286	5,584	5,690	108	102
Heifers and Heifer Calves	3,479	3,877	3,882	112	100
Cows and Bulls	28	41	41	146	100

¹ The 7 States include AZ, CA, CO, IA, KS, NE, and TX.

**Cattle on Feed: Number on Feed, 1,000+ Capacity Feedlots,
by Month, State, and United States 2000-2001 ¹**

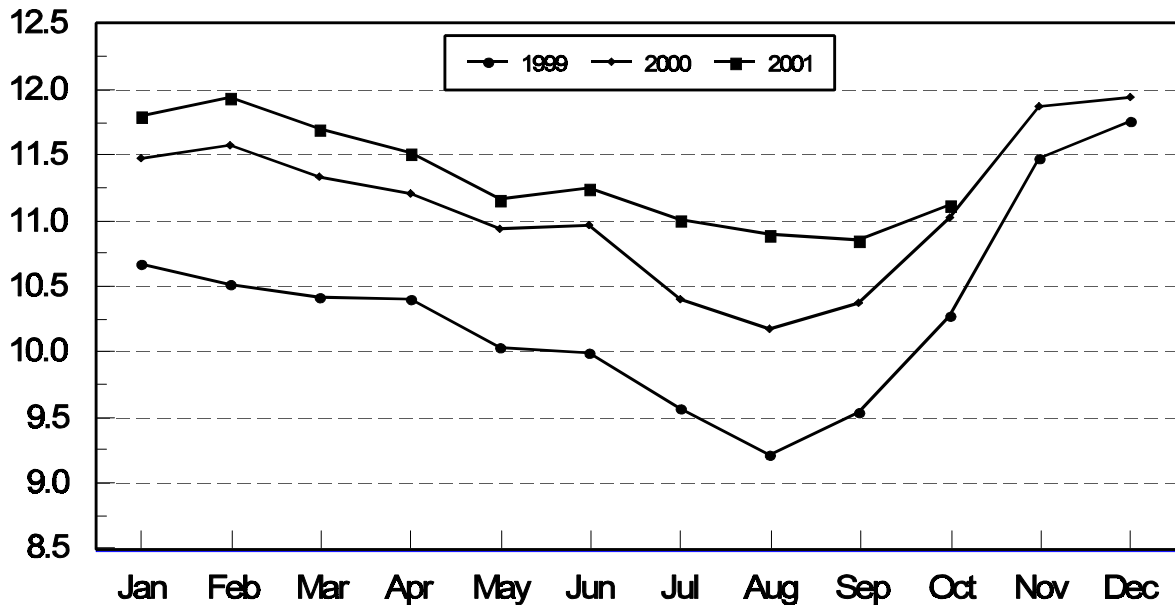
State	Oct 1, 2000	Sep 1, 2001	Oct 1, 2001		
			Number	as % of 2000	as % of Sep
	<i>1,000 Head</i>	<i>1,000 Head</i>	<i>1,000 Head</i>	<i>Percent</i>	<i>Percent</i>
AZ	272	293	298	110	102
CA	420	470	465	111	99
CO	1,170	*1,010	1,060	91	105
ID	310	305	310	100	102
IA	340	310	310	91	100
KS	2,300	2,490	2,540	110	102
NE	2,100	1,820	1,950	93	107
NM	96	96	97	101	101
OK	400	395	390	98	99
SD	145	140	136	94	97
TX	2,900	2,990	2,990	103	100
WA	228	231	244	107	106
Oth Sts	335	305	335	100	110
US	11,016	*10,855	11,125	101	102

* Revised.

¹ Cattle and calves on feed are animals for slaughter market being fed a ration of grain or other concentrates and are expected to produce a carcass that will grade select or better.

**United States Cattle on Feed
1,000+ Capacity Feedlots**

Million Head



**Cattle on Feed: Number Placed on Feed, 1,000+ Capacity Feedlots,
by Month, State, and United States 2000-2001**

State	During Sep 2000	During Aug 2001	During Sep 2001		
			Number	as % of 2000	as % of Aug
	<i>1,000 Head</i>	<i>1,000 Head</i>	<i>1,000 Head</i>	<i>Percent</i>	<i>Percent</i>
AZ	40	32	33	83	103
CA	59	50	47	80	94
CO	335	210	260	78	124
ID	75	70	72	96	103
IA	52	39	66	127	169
KS	540	570	470	87	82
NE	560	435	450	80	103
NM	20	12	13	65	108
OK	110	78	68	62	87
SD	50	21	35	70	167
TX	700	570	480	69	84
WA	62	61	59	95	97
Oth Sts	83	56	83	100	148
US	2,686	2,204	2,136	80	97

**Cattle on Feed: Number Placed on Feed by Weight Group, 1,000+ Capacity
Feedlots, by Month, State, and United States, 2000-2001**

State	During September									
	Under 600		600-699		700-799		800 Plus		Total	
	2000	2001	2000	2001	2000	2001	2000	2001	2000	2001
	<i>1,000 Head</i>	<i>1,000 Head</i>	<i>1,000 Head</i>	<i>1,000 Head</i>	<i>1,000 Head</i>	<i>1,000 Head</i>	<i>1,000 Head</i>	<i>1,000 Head</i>	<i>1,000 Head</i>	<i>1,000 Head</i>
CO	47	28	63	39	103	79	122	114	335	260
KS	150	110	140	115	150	145	100	100	540	470
NE	128	75	98	68	168	139	166	168	560	450
TX	265	185	230	150	145	100	60	45	700	480
Oth Sts	185	130	81	75	115	96	170	175	551	476
US	775	528	612	447	681	559	618	602	2,686	2,136
State	During August									
	Under 600		600-699		700-799		800 Plus		Total	
	2000	2001	2000	2001	2000	2001	2000	2001	2000	2001
	<i>1,000 Head</i>	<i>1,000 Head</i>	<i>1,000 Head</i>	<i>1,000 Head</i>	<i>1,000 Head</i>	<i>1,000 Head</i>	<i>1,000 Head</i>	<i>1,000 Head</i>	<i>1,000 Head</i>	<i>1,000 Head</i>
CO	33	29	56	38	101	73	110	70	300	210
KS	115	95	120	145	175	220	120	110	530	570
NE	60	51	83	60	145	144	207	180	495	435
TX	230	220	170	165	165	125	65	60	630	570
Oth Sts	135	115	75	64	105	105	170	135	485	419
US	573	510	504	472	691	667	672	555	2,440	2,204

**Cattle on Feed: Number Marketed, 1,000+ Capacity Feedlots,
by Month, State, and United States 2000-2001**

State	During Sep 2000	During Aug 2001	During Sep 2001		
			Number	as % of 2000	as % of Aug
	<i>1,000 Head</i>	<i>1,000 Head</i>	<i>1,000 Head</i>	<i>Percent</i>	<i>Percent</i>
AZ	23	34	27	117	79
CA	49	52	49	100	94
CO	225	*255	205	91	80
ID	53	74	66	125	89
IA	41	53	65	159	123
KS	450	490	410	91	84
NE	370	420	315	85	75
NM	13	15	11	85	73
OK	83	71	71	86	100
SD	33	34	39	118	115
TX	550	560	465	85	83
WA	38	58	45	118	78
Oth Sts	62	70	52	84	74
US	1,990	*2,186	1,820	91	83

* Revised.

**Cattle on Feed: Other Disappearance, 1,000+ Capacity Feedlots,
by Month, State, and United States 2000-2001 ¹**

State	During Sep 2000	During Aug 2001	During Sep 2001		
			Number	as % of 2000	as % of Aug
	<i>1,000 Head</i>	<i>1,000 Head</i>	<i>1,000 Head</i>	<i>Percent</i>	<i>Percent</i>
AZ	2	2	1	50	50
CA	5	3	3	60	100
CO	10	5	5	50	100
ID	2	1	1	50	100
IA	1	1	1	100	100
KS	10	10	10	100	100
NE	10	5	5	50	100
NM	1	2	1	100	50
OK	2	2	2	100	100
SD	0	1	0		
TX	10	20	15	150	75
WA	0	1	1		100
Oth Sts	1	1	1	100	100
US	54	54	46	85	85

¹ Includes death loss, movement from feedlots to pasture, and shipments to other feedlots for further feeding.

**Cattle on Feed: Number on Feed by Class, 1,000+ Capacity Feedlots,
by Quarter, State, and United States, 2000-2001**

State	Steers & Steer Calves			Heifers & Heifer Calves			Cows and Bulls		
	Oct 1, 2000	Jul 1, 2001	Oct 1, 2001	Oct 1, 2000	Jul 1, 2001	Oct 1, 2001	Oct 1, 2000	Jul 1, 2001	Oct 1, 2001
	<i>1,000 Head</i>	<i>1,000 Head</i>	<i>1,000 Head</i>	<i>1,000 Head</i>	<i>1,000 Head</i>	<i>1,000 Head</i>	<i>1,000 Head</i>	<i>1,000 Head</i>	<i>1,000 Head</i>
AZ	259	286	295	13	5	3	0	0	0
CA	375	410	430	45	60	35	0	0	0
CO	670	615	570	495	490	485	5	5	5
ID	220	218	214	89	95	95	1	7	1
IA	205	225	200	135	119	109	0	1	1
KS	1,280	1,295	1,520	1,020	1,050	1,015	0	5	5
NE	1,195	1,025	990	870	840	935	35	35	25
NM	41	*42	43	55	*56	54	0	0	0
OK	240	220	215	157	170	175	3	0	0
SD	87	102	74	55	65	58	3	8	4
TX	1,600	1,665	1,685	1,299	1,330	1,300	1	5	5
WA	150	156	161	78	71	83	0	0	0
Oth Sts	240	235	230	90	95	100	5	5	5
US	6,562	*6,494	6,627	4,401	*4,446	4,447	53	71	51

* Revised.

Terms and Definitions of Cattle on Feed Estimates

Cattle on feed are animals being fed a ration of grain, silage, hay and/or protein supplement for slaughter market that are expected to produce a carcass that will grade select or better. It excludes cattle being "backgrounded only" for later sale as feeders or later placement in another feedlot.

Placements are cattle put into a feedlot, fed a ration which will produce a carcass that will grade select or better, and are intended for the slaughter market.

Marketings are cattle shipped out of feedlots to a slaughter market.

Other disappearance includes death loss, movement from feedlots to pasture, and shipments to other feedlots for further feeding.

Reliability of Cattle on Feed Estimates

Survey Procedures: During January and July all known feedlots in the U.S. with capacity of 1,000 or more head are surveyed to provide data for cattle on feed estimates. During the other months, all known feedlots from 17 States are surveyed. The 17 States account for 98 percent of the cattle on feed in feedlots with capacity of 1,000 or more head.

Estimating Procedures: These cattle on feed estimates were prepared by the Agricultural Statistics Board after reviewing recommendations and analysis submitted by each State office. Regional and State survey data were reviewed for reasonableness with each other and with estimates from the previous month when setting the current estimates.

Revision Policy: Revisions to previous estimates are made to improve month to month relationships. Estimates for the previous month are subject to revision in all States each month when current estimates are made. In February, all monthly estimates for the previous year, and the number of feedlots and annual marketings from two years ago are reviewed and subject to revisions. The reviews are primarily based on slaughter data, state check-off or brand data, and any other data that may have been received after the original estimate was made. Estimates will also be reviewed after data from the Census of Agriculture are available. No revisions will be made after that date and estimates become final.

Reliability: Since all 1000+ capacity cattle on feed operators in every State are not included in the monthly survey, survey estimates are subject to sampling variability. Survey results are also subject to non-sampling errors such as omissions, duplications, and mistakes in reporting, recording, and processing the data. The effects of these errors cannot be measured directly. They are minimized through rigid quality controls in the data collection process and through a careful review of all reported data for consistency and reasonableness.

The next "Cattle on Feed" report will be released at 3 p.m. ET on November 16, 2001.

The United States Department of Agriculture (USDA) prohibits discrimination in all its programs on the basis of race, color, national origin, gender, religion, age, disability, political beliefs, sexual orientation, and marital or family status. (Not all prohibited bases apply to all programs.) Persons with disabilities who require alternative means for communication of program information (braille, large print, audiotape, etc.) should contact the USDA's TARGET Center at 202-720-2600 (voice and TDD).

To file a complaint of discrimination, write USDA, Director, Office of Civil Rights, Room 326-W, Whitten Building, 1400 Independence Avenue, SW, Washington, D.C., 20250-9410, or call 202-720-5964 (voice or TDD). USDA is an equal opportunity provider and employer.

ACCESS TO REPORTS!!

For your convenience, there are several ways to obtain NASS reports, data products, and services:

INTERNET ACCESS

All NASS reports are available free of charge on the worldwide Internet. For access, connect to the Internet and go to the NASS Home Page at: <http://www.usda.gov/nass/>. Select "Today's Reports" or Publications and then Reports by Calendar or Publications and then Search, by Title or Subject.

E-MAIL SUBSCRIPTION

There are two options for subscribing via e-mail. All NASS reports are available by subscription free of charge direct to your e-mail address. 1) Starting with the NASS Home Page at <http://www.usda.gov/nass/>, click on **Publications**, then click on the **Subscribe by E-mail** button which takes you to the page describing e-mail delivery of reports. Finally, click on **Go to the Subscription Page** and follow the instructions. 2) If you do NOT have Internet access, send an e-mail message to: usda-reports@usda.mannlib.cornell.edu. In the body of the message type the word: **list**.

AUTOFAX ACCESS

NASSFax service is available for some reports from your fax machine. Please call 202-720-2000, using the handset attached to your fax. Respond to the voice prompts. Document 0411 is a list of available reports.

PRINTED REPORTS OR DATA PRODUCTS

CALL OUR TOLL-FREE ORDER DESK: 800-999-6779 (U.S. and Canada)
Other areas, please call 703-605-6220 FAX: 703-605-6900
(Visa, MasterCard, check, or money order acceptable for payment.)

ASSISTANCE

For **assistance** with general agricultural statistics or further information about NASS or its products or services, contact the **Agricultural Statistics Hotline** at **800-727-9540**, 7:30 a.m. to 4:00 p.m. ET, or e-mail: nass@nass.usda.gov.