



Cattle on Feed

Released November 16, 2001, by the National Agricultural Statistics Service (NASS), Agricultural Statistics Board, U.S. Department of Agriculture. For information on "Cattle on Feed" call Steve Anderson at (202) 720-3040, office hours 7:30 a.m. to 4:00 p.m. ET.

U.S. Cattle on Feed Virtually Unchanged

Cattle and calves on feed for slaughter market in the United States for feedlots with capacity of 1,000 or more head totaled 11.9 million head on November 1, 2001. The inventory was 1,000 head below November 1, 2000 but 3 percent above November 1, 1999.

Placements in feedlots during October totaled 2.69 million, 5 percent below 2000 and 14 percent below 1999. Net placements were 2.62 million. During October, placements of cattle and calves weighing less than 600 pounds were 889,000, 600-699 pounds were 755,000, 700-799 pounds were 589,000, and 800 pounds and greater were 459,000.

Marketings of fed cattle during October totaled 1.89 million, 2 percent below 2000 but 3 percent above 1999.

Other disappearance totaled 68,000 during October, 3 percent above 2000 but 15 percent below 1999.

Cattle on Feed in Historic 7 States Up Slightly

Cattle on feed November 1, 2001, in the historic 7 States for feedlots with capacity of 1,000 or more head totaled 10.2 million, up 39,000 head from the previous year and 5 percent above November 1, 1999.

Placements in feedlots during October totaled 2.31 million, 3 percent below 2000 and 12 percent below 1999.

Marketings during October totaled 1.63 million, 1 percent below 2000 but 4 percent above 1999.

Other disappearance during October was 57,000 head, 14 percent above 2000 but 10 percent below 1999.

**Cattle on Feed: Number on Feed, Placements, Marketings, and
Other Disappearance, 1,000+ Capacity Feedlots,
United States, November 1, 1999-2001**

Item	Number			2001 as % of	
	1999	2000	2001	1999	2000
	<i>1,000 Head</i>	<i>1,000 Head</i>	<i>1,000 Head</i>	<i>Percent</i>	<i>Percent</i>
On Feed Oct 1 ¹	10,276	11,016	11,125	108	101
Placed on Feed During Oct	3,114	2,829	2,692	86	95
Fed Cattle Marketed During Oct	1,835	1,915	1,886	103	98
Other Disappearance During Oct ²	80	66	68	85	103
On Feed Nov 1 ¹	11,475	11,864	11,863	103	100

¹ Cattle and calves on feed are animals for slaughter market being fed a ration of grain or other concentrates and are expected to produce a carcass that will grade select or better.

² Includes death loss, movement from feedlots to pasture, and shipments to other feedlots for further feeding.

**Cattle on Feed: Number on Feed, Placements, Marketings, and
Other Disappearance, 1,000+ Capacity Feedlots,
United States, October 1, 1999-2001**

Item	Number			2001 as % of	
	1999	2000	2001	1999	2000
	<i>1,000 Head</i>	<i>1,000 Head</i>	<i>1,000 Head</i>	<i>Percent</i>	<i>Percent</i>
On Feed Sep 1 ¹	9,536	10,374	10,855	114	105
Placed on Feed During Sep	2,759	2,686	2,136	77	80
Fed Cattle Marketed During Sep	1,957	1,990	1,820	93	91
Other Disappearance During Sep ²	62	54	46	74	85
On Feed Oct 1 ¹	10,276	11,016	11,125	108	101

¹ Cattle and calves on feed are animals for slaughter market being fed a ration of grain or other concentrates and are expected to produce a carcass that will grade select or better.

² Includes death loss, movement from feedlots to pasture, and shipments to other feedlots for further feeding.

**Cattle on Feed: Number on Feed, Placements, Marketings, and
Other Disappearance, 1,000+ Capacity Feedlots,
7 States, November 1, 1999-2001¹**

Item	Number			2001 as % of	
	1999	2000	2001	1999	2000
	<i>1,000 Head</i>	<i>1,000 Head</i>	<i>1,000 Head</i>	<i>Percent</i>	<i>Percent</i>
On Feed Oct 1 ²	8,793	9,502	9,613	109	101
Placed on Feed During Oct	2,629	2,387	2,305	88	97
Fed Cattle Marketed During Oct	1,570	1,647	1,630	104	99
Other Disappearance During Oct ³	63	50	57	90	114
On Feed Nov 1 ²	9,789	10,192	10,231	105	100

¹ The 7 States include AZ, CA, CO, IA, KS, NE, and TX.

² Cattle and calves on feed are animals for slaughter market being fed a ration of grain or other concentrates and are expected to produce a carcass that will grade select or better.

³ Includes death loss, movement from feedlots to pasture, and shipments to other feedlots for further feeding.

**Cattle on Feed: Number on Feed, Placements, Marketings, and
Other Disappearance, 1,000+ Capacity Feedlots,
7 States, October 1, 1999-2001¹**

Item	Number			2001 as % of	
	1999	2000	2001	1999	2000
	<i>1,000 Head</i>	<i>1,000 Head</i>	<i>1,000 Head</i>	<i>Percent</i>	<i>Percent</i>
On Feed Sep 1 ²	8,185	8,972	9,383	115	105
Placed on Feed During Sep	2,345	2,286	1,806	77	79
Fed Cattle Marketed During Sep	1,682	1,708	1,536	91	90
Other Disappearance During Sep ³	55	48	40	73	83
On Feed Oct 1 ²	8,793	9,502	9,613	109	101

¹ The 7 States include AZ, CA, CO, IA, KS, NE, and TX.

² Cattle and calves on feed are animals for slaughter market being fed a ration of grain or other concentrates and are expected to produce a carcass that will grade select or better.

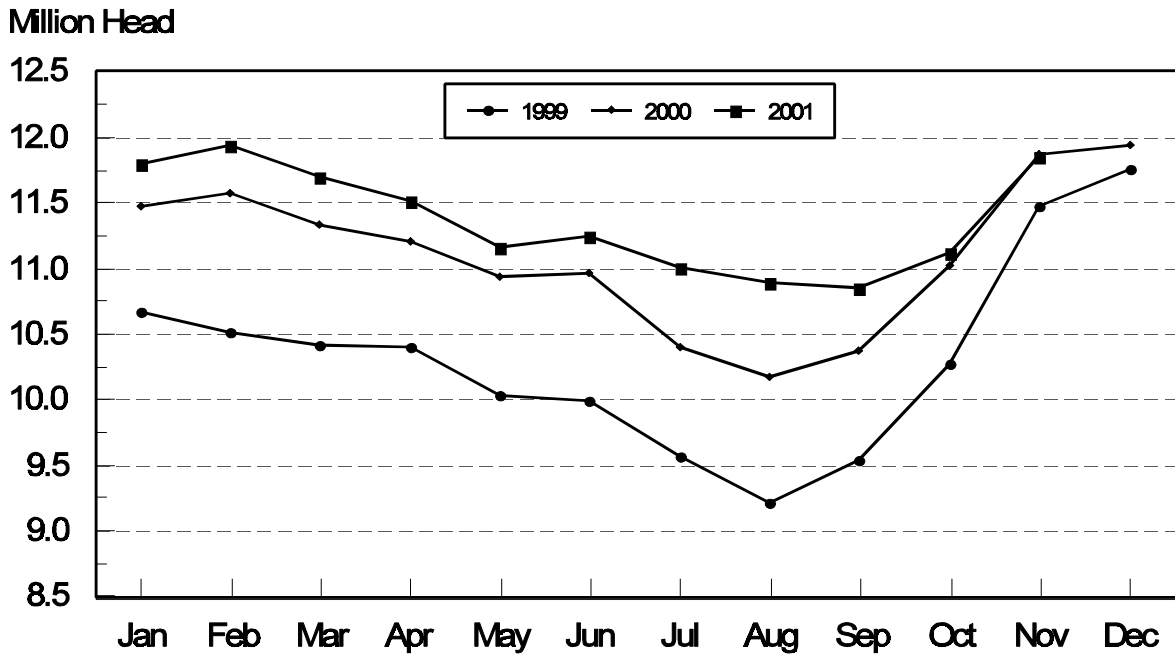
³ Includes death loss, movement from feedlots to pasture, and shipments to other feedlots for further feeding.

**Cattle on Feed: Number on Feed, 1,000+ Capacity Feedlots,
by Month, State, and United States 2000-2001 ¹**

State	Nov 1, 2000	Oct 1, 2001	Nov 1, 2001		
			Number	as % of 2000	as % of Oct
	<i>1,000 Head</i>	<i>1,000 Head</i>	<i>1,000 Head</i>	<i>Percent</i>	<i>Percent</i>
AZ	292	298	301	103	101
CA	440	465	470	107	101
CO	1,250	1,060	1,170	94	110
ID	325	310	330	102	106
IA	380	310	340	89	110
KS	2,420	2,540	2,670	110	105
NE	2,380	1,950	2,200	92	113
NM	109	97	108	99	111
OK	410	390	395	96	101
SD	180	136	171	95	126
TX	3,030	2,990	3,080	102	103
WA	243	244	258	106	106
Oth Sts	405	335	370	91	110
US	11,864	11,125	11,863	100	107

¹ Cattle and calves on feed are animals for slaughter market being fed a ration of grain or other concentrates and are expected to produce a carcass that will grade select or better.

**United States Cattle on Feed
1,000+ Capacity Feedlots**



**Cattle on Feed: Number Placed on Feed, 1,000+ Capacity Feedlots,
by Month, State, and United States 2000-2001**

State	During Oct 2000	During Sep 2001	During Oct 2001		
			Number	as % of 2000	as % of Sep
	<i>1,000 Head</i>	<i>1,000 Head</i>	<i>1,000 Head</i>	<i>Percent</i>	<i>Percent</i>
AZ	42	33	35	83	106
CA	76	47	60	79	128
CO	290	260	305	105	117
ID	79	72	79	100	110
IA	99	66	75	76	114
KS	550	470	560	102	119
NE	660	450	590	89	131
NM	27	13	26	96	200
OK	88	68	80	91	118
SD	70	35	61	87	174
TX	670	480	680	101	142
WA	59	59	54	92	92
Oth Sts	119	83	87	73	105
US	2,829	2,136	2,692	95	126

**Cattle on Feed: Number Placed on Feed by Weight Group, 1,000+ Capacity
Feedlots, by Month, State, and United States, 2000-2001**

State	During October									
	Under 600		600-699		700-799		800 Plus		Total	
	2000	2001	2000	2001	2000	2001	2000	2001	2000	2001
	<i>1,000 Head</i>	<i>1,000 Head</i>	<i>1,000 Head</i>	<i>1,000 Head</i>	<i>1,000 Head</i>	<i>1,000 Head</i>	<i>1,000 Head</i>	<i>1,000 Head</i>	<i>1,000 Head</i>	<i>1,000 Head</i>
CO	95	64	70	74	70	91	55	76	290	305
KS	210	150	130	155	140	175	70	80	550	560
NE	226	225	200	161	92	91	142	113	660	590
TX	235	230	240	245	135	145	60	60	670	680
Oth Sts	300	220	115	120	94	87	150	130	659	557
US	1,066	889	755	755	531	589	477	459	2,829	2,692
State	During September									
	Under 600		600-699		700-799		800 Plus		Total	
	2000	2001	2000	2001	2000	2001	2000	2001	2000	2001
	<i>1,000 Head</i>	<i>1,000 Head</i>	<i>1,000 Head</i>	<i>1,000 Head</i>	<i>1,000 Head</i>	<i>1,000 Head</i>	<i>1,000 Head</i>	<i>1,000 Head</i>	<i>1,000 Head</i>	<i>1,000 Head</i>
CO	47	28	63	39	103	79	122	114	335	260
KS	150	110	140	115	150	145	100	100	540	470
NE	128	75	98	68	168	139	166	168	560	450
TX	265	185	230	150	145	100	60	45	700	480
Oth Sts	185	130	81	75	115	96	170	175	551	476
US	775	528	612	447	681	559	618	602	2,686	2,136

**Cattle on Feed: Number Marketed, 1,000+ Capacity Feedlots,
by Month, State, and United States 2000-2001**

State	During Oct 2000	During Sep 2001	During Oct 2001		
			Number	as % of 2000	as % of Sep
	<i>1,000 Head</i>	<i>1,000 Head</i>	<i>1,000 Head</i>	<i>Percent</i>	<i>Percent</i>
AZ	21	27	31	148	115
CA	49	49	50	102	102
CO	205	205	190	93	93
ID	60	66	58	97	88
IA	57	65	44	77	68
KS	415	410	415	100	101
NE	370	315	330	89	105
NM	13	11	14	108	127
OK	74	71	72	97	101
SD	34	39	25	74	64
TX	530	465	570	108	123
WA	39	45	38	97	84
Oth Sts	48	52	49	102	94
US	1,915	1,820	1,886	98	104

**Cattle on Feed: Other Disappearance, 1,000+ Capacity Feedlots,
by Month, State, and United States 2000-2001 ¹**

State	During Oct 2000	During Sep 2001	During Oct 2001		
			Number	as % of 2000	as % of Sep
	<i>1,000 Head</i>	<i>1,000 Head</i>	<i>1,000 Head</i>	<i>Percent</i>	<i>Percent</i>
AZ	1	1	1	100	100
CA	7	3	5	71	167
CO	5	5	5	100	100
ID	4	1	1	25	100
IA	2	1	1	50	100
KS	15	10	15	100	150
NE	10	5	10	100	200
NM	1	1	1	100	100
OK	4	2	3	75	150
SD	1	0	1	100	
TX	10	15	20	200	133
WA	5	1	2	40	200
Oth Sts	1	1	3	300	300
US	66	46	68	103	148

¹ Includes death loss, movement from feedlots to pasture, and shipments to other feedlots for further feeding.

Terms and Definitions of Cattle on Feed Estimates

Cattle on feed are animals being fed a ration of grain, silage, hay and/or protein supplement for slaughter market that are expected to produce a carcass that will grade select or better. It excludes cattle being "backgrounded only" for later sale as feeders or later placement in another feedlot.

Placements are cattle put into a feedlot, fed a ration which will produce a carcass that will grade select or better, and are intended for the slaughter market.

Marketings are cattle shipped out of feedlots to a slaughter market.

Other disappearance includes death loss, movement from feedlots to pasture, and shipments to other feedlots for further feeding.

Reliability of Cattle on Feed Estimates

Survey Procedures: During January and July all known feedlots in the U.S. with capacity of 1,000 or more head are surveyed to provide data for cattle on feed estimates. During the other months, all known feedlots from 17 States are surveyed. The 17 States account for 98 percent of the cattle on feed in feedlots with capacity of 1,000 or more head.

Estimating Procedures: These cattle on feed estimates were prepared by the Agricultural Statistics Board after reviewing recommendations and analysis submitted by each State office. Regional and State survey data were reviewed for reasonableness with each other and with estimates from the previous month when setting the current estimates.

Revision Policy: Revisions to previous estimates are made to improve month to month relationships. Estimates for the previous month are subject to revision in all States each month when current estimates are made. In February, all monthly estimates for the previous year, and the number of feedlots and annual marketings from two years ago are reviewed and subject to revisions. The reviews are primarily based on slaughter data, state check-off or brand data, and any other data that may have been received after the original estimate was made. Estimates will also be reviewed after data from the Census of Agriculture are available. No revisions will be made after that date and estimates become final.

Reliability: Since all 1000+ capacity cattle on feed operators in every State are not included in the monthly survey, survey estimates are subject to sampling variability. Survey results are also subject to non-sampling errors such as omissions, duplications, and mistakes in reporting, recording, and processing the data. The effects of these errors cannot be measured directly. They are minimized through rigid quality controls in the data collection process and through a careful review of all reported data for consistency and reasonableness.

The next "Cattle on Feed" report will be released at 3 p.m. ET on December 21, 2001.

The United States Department of Agriculture (USDA) prohibits discrimination in all its programs on the basis of race, color, national origin, gender, religion, age, disability, political beliefs, sexual orientation, and marital or family status. (Not all prohibited bases apply to all programs.) Persons with disabilities who require alternative means for communication of program information (braille, large print, audiotape, etc.) should contact the USDA's TARGET Center at 202-720-2600 (voice and TDD).

To file a complaint of discrimination, write USDA, Director, Office of Civil Rights, Room 326-W, Whitten Building, 1400 Independence Avenue, SW, Washington, D.C., 20250-9410, or call 202-720-5964 (voice or TDD). USDA is an equal opportunity provider and employer.

ACCESS TO REPORTS!!

For your convenience, there are several ways to obtain NASS reports, data products, and services:

INTERNET ACCESS

All NASS reports are available free of charge on the worldwide Internet. For access, connect to the Internet and go to the NASS Home Page at: <http://www.usda.gov/nass/>. Select "Today's Reports" or Publications and then Reports by Calendar or Publications and then Search, by Title or Subject.

E-MAIL SUBSCRIPTION

There are two options for subscribing via e-mail. All NASS reports are available by subscription free of charge direct to your e-mail address. 1) Starting with the NASS Home Page at <http://www.usda.gov/nass/>, click on **Publications**, then click on the **Subscribe by E-mail** button which takes you to the page describing e-mail delivery of reports. Finally, click on **Go to the Subscription Page** and follow the instructions. 2) If you do NOT have Internet access, send an e-mail message to: usda-reports@usda.mannlib.cornell.edu. In the body of the message type the word: **list**.

AUTOFAX ACCESS

NASSFax service is available for some reports from your fax machine. Please call 202-720-2000, using the handset attached to your fax. Respond to the voice prompts. Document 0411 is a list of available reports.

PRINTED REPORTS OR DATA PRODUCTS

CALL OUR TOLL-FREE ORDER DESK: 800-999-6779 (U.S. and Canada)
Other areas, please call 703-605-6220 FAX: 703-605-6900
(Visa, MasterCard, check, or money order acceptable for payment.)

ASSISTANCE

For **assistance** with general agricultural statistics or further information about NASS or its products or services, contact the **Agricultural Statistics Hotline** at **800-727-9540**, 7:30 a.m. to 4:00 p.m. ET, or e-mail: nass@nass.usda.gov.