



# Cattle on Feed

---

Released December 21, 2001, by the National Agricultural Statistics Service (NASS), Agricultural Statistics Board, U.S. Department of Agriculture. For information on "Cattle on Feed" call Steve Anderson at (202) 720-3040, office hours 7:30 a.m. to 4:00 p.m. ET.

## U.S. Cattle on Feed Down Slightly

**Cattle and calves on feed** for slaughter market in the United States for feedlots with capacity of 1,000 or more head totaled 11.9 million head on December 1, 2001. The inventory was slightly below December 1, 2000 but 1 percent above December 1, 1999.

**Placements** in feedlots during November totaled 1.91 million, 5 percent below 2000 and 12 percent below 1999. Net placements were 1.83 million. During November, placements of cattle and calves weighing less than 600 pounds were 655,000, 600-699 pounds were 588,000, 700-799 pounds were 381,000, and 800 pounds and greater were 284,000.

**Marketings** of fed cattle during November totaled 1.80 million, 1 percent below 2000 and 1,000 head below 1999.

**Other disappearance** totaled 80,000 during November, 24 percent below 2000 and 4 percent below 1999.

## Cattle on Feed in Historic 7 States Down Slightly

**Cattle on feed** December 1, 2001, in the historic 7 States for feedlots with capacity of 1,000 or more head totaled 10.2 million, down slightly from the previous year but 2 percent above December 1, 1999.

**Placements** in feedlots during November totaled 1.58 million, 6 percent below 2000 and 13 percent below 1999.

**Marketings** during November totaled 1.54 million, 2 percent below 2000 but 1 percent above 1999.

**Other disappearance** during November was 68,000 head, 24 percent below 2000 but 10 percent above 1999.

**Cattle on Feed: Number on Feed, Placements, Marketings, and  
Other Disappearance, 1,000+ Capacity Feedlots,  
United States, December 1, 1999-2001**

Item	Number			2001 as % of	
	1999	2000	2001	1999	2000
	<i>1,000 Head</i>	<i>1,000 Head</i>	<i>1,000 Head</i>	<i>Percent</i>	<i>Percent</i>
On Feed Nov 1 <sup>1</sup>	11,475	11,864	11,863	103	100
Placed on Feed During Nov	2,170	2,014	1,908	88	95
Fed Cattle Marketed During Nov	1,801	1,825	1,800	100	99
Other Disappearance During Nov <sup>2</sup>	83	105	80	96	76
On Feed Dec 1 <sup>1</sup>	11,761	11,948	11,891	101	100

<sup>1</sup> Cattle and calves on feed are animals for slaughter market being fed a ration of grain or other concentrates and are expected to produce a carcass that will grade select or better.

<sup>2</sup> Includes death loss, movement from feedlots to pasture, and shipments to other feedlots for further feeding.

**Cattle on Feed: Number on Feed, Placements, Marketings, and  
Other Disappearance, 1,000+ Capacity Feedlots,  
United States, November 1, 1999-2001**

Item	Number			2001 as % of	
	1999	2000	2001	1999	2000
	<i>1,000 Head</i>	<i>1,000 Head</i>	<i>1,000 Head</i>	<i>Percent</i>	<i>Percent</i>
On Feed Oct 1 <sup>1</sup>	10,276	11,016	11,125	108	101
Placed on Feed During Oct	3,114	2,829	*2,697	87	95
Fed Cattle Marketed During Oct	1,835	1,915	*1,891	103	99
Other Disappearance During Oct <sup>2</sup>	80	66	68	85	103
On Feed Nov 1 <sup>1</sup>	11,475	11,864	11,863	103	100

\* Revised.

<sup>1</sup> Cattle and calves on feed are animals for slaughter market being fed a ration of grain or other concentrates and are expected to produce a carcass that will grade select or better.

<sup>2</sup> Includes death loss, movement from feedlots to pasture, and shipments to other feedlots for further feeding.

**Cattle on Feed: Number on Feed, Placements, Marketings, and  
Other Disappearance, 1,000+ Capacity Feedlots,  
7 States, December 1, 1999-2001<sup>1</sup>**

Item	Number			2001 as % of	
	1999	2000	2001	1999	2000
	<i>1,000 Head</i>	<i>1,000 Head</i>	<i>1,000 Head</i>	<i>Percent</i>	<i>Percent</i>
On Feed Nov 1 <sup>2</sup>	9,789	10,192	10,231	105	100
Placed on Feed During Nov	1,823	1,678	1,581	87	94
Fed Cattle Marketed During Nov	1,530	1,568	1,541	101	98
Other Disappearance During Nov <sup>3</sup>	62	89	68	110	76
On Feed Dec 1 <sup>2</sup>	10,020	10,213	10,203	102	100

<sup>1</sup> The 7 States include AZ, CA, CO, IA, KS, NE, and TX.

<sup>2</sup> Cattle and calves on feed are animals for slaughter market being fed a ration of grain or other concentrates and are expected to produce a carcass that will grade select or better.

<sup>3</sup> Includes death loss, movement from feedlots to pasture, and shipments to other feedlots for further feeding.

**Cattle on Feed: Number on Feed, Placements, Marketings, and  
Other Disappearance, 1,000+ Capacity Feedlots,  
7 States, November 1, 1999-2001<sup>1</sup>**

Item	Number			2001 as % of	
	1999	2000	2001	1999	2000
	<i>1,000 Head</i>	<i>1,000 Head</i>	<i>1,000 Head</i>	<i>Percent</i>	<i>Percent</i>
On Feed Oct 1 <sup>2</sup>	8,793	9,502	9,613	109	101
Placed on Feed During Oct	2,629	2,387	*2,310	88	97
Fed Cattle Marketed During Oct	1,570	1,647	*1,635	104	99
Other Disappearance During Oct <sup>3</sup>	63	50	57	90	114
On Feed Nov 1 <sup>2</sup>	9,789	10,192	10,231	105	100

\* Revised.

<sup>1</sup> The 7 States include AZ, CA, CO, IA, KS, NE, and TX.

<sup>2</sup> Cattle and calves on feed are animals for slaughter market being fed a ration of grain or other concentrates and are expected to produce a carcass that will grade select or better.

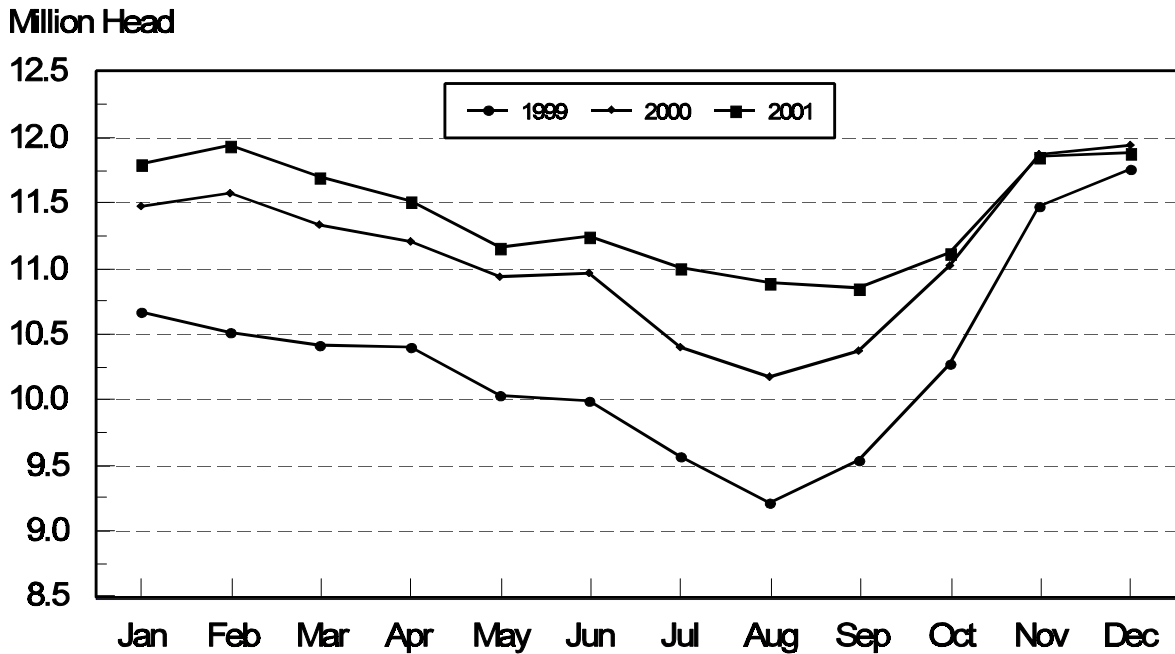
<sup>3</sup> Includes death loss, movement from feedlots to pasture, and shipments to other feedlots for further feeding.

**Cattle on Feed: Number on Feed, 1,000+ Capacity Feedlots,  
by Month, State, and United States 2000-2001 <sup>1</sup>**

State	Dec 1, 2000	Nov 1, 2001	Dec 1, 2001		
			Number	as % of 2000	as % of Nov
	<i>1,000 Head</i>	<i>1,000 Head</i>	<i>1,000 Head</i>	<i>Percent</i>	<i>Percent</i>
AZ	298	301	303	102	101
CA	450	470	490	109	104
CO	1,230	1,170	1,160	94	99
ID	325	330	340	105	103
IA	395	340	350	89	103
KS	2,460	2,670	2,640	107	99
NE	2,410	2,200	2,270	94	103
NM	113	108	108	96	100
OK	415	395	385	93	97
SD	200	171	195	98	114
TX	2,970	3,080	2,990	101	97
WA	247	258	260	105	101
Oth Sts	435	370	400	92	108
US	11,948	11,863	11,891	100	100

<sup>1</sup> Cattle and calves on feed are animals for slaughter market being fed a ration of grain or other concentrates and are expected to produce a carcass that will grade select or better.

**United States Cattle on Feed  
1,000+ Capacity Feedlots**



**Cattle on Feed: Number Placed on Feed, 1,000+ Capacity Feedlots,  
by Month, State, and United States 2000-2001**

State	During Nov 2000	During Oct 2001	During Nov 2001		
			Number	as % of 2000	as % of Oct
	<i>1,000 Head</i>	<i>1,000 Head</i>	<i>1,000 Head</i>	<i>Percent</i>	<i>Percent</i>
AZ	39	35	31	79	89
CA	69	60	70	101	117
CO	180	*310	175	97	56
ID	64	79	74	116	94
IA	70	75	75	107	100
KS	470	560	410	87	73
NE	410	590	390	95	66
NM	20	26	15	75	58
OK	70	80	59	84	74
SD	47	61	53	113	87
TX	440	680	430	98	63
WA	53	54	48	91	89
Oth Sts	82	87	78	95	90
US	2,014	*2,697	1,908	95	71

\* Revised.

**Cattle on Feed: Number Placed on Feed by Weight Group, 1,000+ Capacity  
Feedlots, by Month, State, and United States, 2000-2001**

State	During November									
	Under 600		600-699		700-799		800 Plus		Total	
	2000	2001	2000	2001	2000	2001	2000	2001	2000	2001
	<i>1,000 Head</i>	<i>1,000 Head</i>	<i>1,000 Head</i>	<i>1,000 Head</i>	<i>1,000 Head</i>	<i>1,000 Head</i>	<i>1,000 Head</i>	<i>1,000 Head</i>	<i>1,000 Head</i>	<i>1,000 Head</i>
CO	62	57	45	49	45	43	28	26	180	175
KS	180	115	135	145	95	95	60	55	470	410
NE	120	133	120	119	95	60	75	78	410	390
TX	180	155	140	155	95	95	25	25	440	430
Oth Sts	215	195	119	120	75	88	105	100	514	503
US	757	655	559	588	405	381	293	284	2,014	1,908
	During October									
	Under 600		600-699		700-799		800 Plus		Total	
	2000	2001	2000	2001	2000	2001	2000	2001	2000	2001
	<i>1,000 Head</i>	<i>1,000 Head</i>	<i>1,000 Head</i>	<i>1,000 Head</i>	<i>1,000 Head</i>	<i>1,000 Head</i>	<i>1,000 Head</i>	<i>1,000 Head</i>	<i>1,000 Head</i>	<i>1,000 Head</i>
CO	95	*65	70	*76	70	*92	55	*77	290	*310
KS	210	150	130	155	140	175	70	80	550	560
NE	226	225	200	161	92	91	142	113	660	590
TX	235	230	240	245	135	145	60	60	670	680
Oth Sts	300	220	115	120	94	87	150	130	659	557
US	1,066	*890	755	*757	531	*590	477	*460	2,829	*2,697

\* Revised.

**Cattle on Feed: Number Marketed, 1,000+ Capacity Feedlots,  
by Month, State, and United States 2000-2001**

State	During Nov 2000	During Oct 2001	During Nov 2001		
			Number	as % of 2000	as % of Oct
	<i>1,000 Head</i>	<i>1,000 Head</i>	<i>1,000 Head</i>	<i>Percent</i>	<i>Percent</i>
AZ	30	31	27	90	87
CA	49	50	45	92	90
CO	190	*195	180	95	92
ID	62	58	61	98	105
IA	54	44	64	119	145
KS	400	415	420	105	101
NE	365	330	305	84	92
NM	14	14	14	100	100
OK	60	72	66	110	92
SD	26	25	29	112	116
TX	480	570	500	104	88
WA	47	38	45	96	118
Oth Sts	48	49	44	92	90
US	1,825	*1,891	1,800	99	95

\* Revised.

**Cattle on Feed: Other Disappearance, 1,000+ Capacity Feedlots,  
by Month, State, and United States 2000-2001 <sup>1</sup>**

State	During Nov 2000	During Oct 2001	During Nov 2001		
			Number	as % of 2000	as % of Oct
	<i>1,000 Head</i>	<i>1,000 Head</i>	<i>1,000 Head</i>	<i>Percent</i>	<i>Percent</i>
AZ	3	1	2	67	200
CA	10	5	5	50	100
CO	10	5	5	50	100
ID	2	1	3	150	300
IA	1	1	1	100	100
KS	30	15	20	67	133
NE	15	10	15	100	150
NM	2	1	1	50	100
OK	5	3	3	60	100
SD	1	1	0		
TX	20	20	20	100	100
WA	2	2	1	50	50
Oth Sts	4	3	4	100	133
US	105	68	80	76	118

<sup>1</sup> Includes death loss, movement from feedlots to pasture, and shipments to other feedlots for further feeding.

## Terms and Definitions of Cattle on Feed Estimates

**Cattle on feed** are animals being fed a ration of grain, silage, hay and/or protein supplement for slaughter market that are expected to produce a carcass that will grade select or better. It excludes cattle being "backgrounded only" for later sale as feeders or later placement in another feedlot.

**Placements** are cattle put into a feedlot, fed a ration which will produce a carcass that will grade select or better, and are intended for the slaughter market.

**Marketings** are cattle shipped out of feedlots to a slaughter market.

**Other disappearance** includes death loss, movement from feedlots to pasture, and shipments to other feedlots for further feeding.

## Reliability of Cattle on Feed Estimates

**Survey Procedures:** During January and July all known feedlots in the U.S. with capacity of 1,000 or more head are surveyed to provide data for cattle on feed estimates. During the other months, all known feedlots from 17 States are surveyed. The 17 States account for 98 percent of the cattle on feed in feedlots with capacity of 1,000 or more head.

**Estimating Procedures:** These cattle on feed estimates were prepared by the Agricultural Statistics Board after reviewing recommendations and analysis submitted by each State office. Regional and State survey data were reviewed for reasonableness with each other and with estimates from the previous month when setting the current estimates.

**Revision Policy:** Revisions to previous estimates are made to improve month to month relationships. Estimates for the previous month are subject to revision in all States each month when current estimates are made. In February, all monthly estimates for the previous year, and the number of feedlots and annual marketings from two years ago are reviewed and subject to revisions. The reviews are primarily based on slaughter data, state check-off or brand data, and any other data that may have been received after the original estimate was made. Estimates will also be reviewed after data from the Census of Agriculture are available. No revisions will be made after that date and estimates become final.

**Reliability:** Since all 1000+ capacity cattle on feed operators in every State are not included in the monthly survey, survey estimates are subject to sampling variability. Survey results are also subject to non-sampling errors such as omissions, duplications, and mistakes in reporting, recording, and processing the data. The effects of these errors cannot be measured directly. They are minimized through rigid quality controls in the data collection process and through a careful review of all reported data for consistency and reasonableness.

The next "Cattle on Feed" report will be released at 3 p.m. ET on January 18, 2002.

The United States Department of Agriculture (USDA) prohibits discrimination in all its programs on the basis of race, color, national origin, gender, religion, age, disability, political beliefs, sexual orientation, and marital or family status. (Not all prohibited bases apply to all programs.) Persons with disabilities who require alternative means for communication of program information (braille, large print, audiotape, etc.) should contact the USDA's TARGET Center at 202-720-2600 (voice and TDD).

To file a complaint of discrimination, write USDA, Director, Office of Civil Rights, Room 326-W, Whitten Building, 1400 Independence Avenue, SW, Washington, D.C., 20250-9410, or call 202-720-5964 (voice or TDD). USDA is an equal opportunity provider and employer.

## **ACCESS TO REPORTS!!**

---

For your convenience, there are several ways to obtain NASS reports, data products, and services:

### **INTERNET ACCESS**

All NASS reports are available free of charge on the worldwide Internet. For access, connect to the Internet and go to the NASS Home Page at: <http://www.usda.gov/nass/>. Select "Today's Reports" or Publications and then Reports by Calendar or Publications and then Search, by Title or Subject.

### **E-MAIL SUBSCRIPTION**

There are two options for subscribing via e-mail. All NASS reports are available by subscription free of charge direct to your e-mail address. 1) Starting with the NASS Home Page at <http://www.usda.gov/nass/>, click on **Publications**, then click on the **Subscribe by E-mail** button which takes you to the page describing e-mail delivery of reports. Finally, click on **Go to the Subscription Page** and follow the instructions. 2) If you do NOT have Internet access, send an e-mail message to: [usda-reports@usda.mannlib.cornell.edu](mailto:usda-reports@usda.mannlib.cornell.edu). In the body of the message type the word: **list**.

### **AUTOFAX ACCESS**

NASSFax service is available for some reports from your fax machine. Please call 202-720-2000, using the handset attached to your fax. Respond to the voice prompts. Document 0411 is a list of available reports.

-----  
**PRINTED REPORTS OR DATA PRODUCTS**

**CALL OUR TOLL-FREE ORDER DESK: 800-999-6779 (U.S. and Canada)**  
**Other areas, please call 703-605-6220      FAX: 703-605-6900**  
**(Visa, MasterCard, check, or money order acceptable for payment.)**

-----

### **ASSISTANCE**

For **assistance** with general agricultural statistics or further information about NASS or its products or services, contact the **Agricultural Statistics Hotline** at **800-727-9540**, 7:30 a.m. to 4:00 p.m. ET, or e-mail: [nass@nass.usda.gov](mailto:nass@nass.usda.gov).