



Cattle on Feed

Released January 18, 2002, by the National Agricultural Statistics Service (NASS), Agricultural Statistics Board, U.S. Department of Agriculture. For information on "Cattle on Feed" call Steve Anderson at (202) 720-3040, office hours 7:30 a.m. to 4:00 p.m. ET.

U.S. Cattle on Feed Down 2 Percent

Cattle and calves on feed for slaughter market in the United States for feedlots with capacity of 1,000 or more head totaled 11.6 million head on January 1, 2002. The inventory was 2 percent below January 1, 2001 but 1 percent above January 1, 2000. The inventory included 7.10 million steers and steer calves, up 1 percent from the previous year. This group accounted for 61 percent of the total inventory. Heifers and heifer calves accounted for 4.38 million head, down 7 percent from January 1, 2001.

Placements in feedlots during December totaled 1.58 million, 7 percent below 2000 and 4 percent below 1999. Net placements were 1.49 million. During December, placements of cattle and calves weighing less than 600 pounds were 418,000, 600-699 pounds were 475,000, 700-799 pounds were 413,000, and 800 pounds and greater were 272,000.

Marketings of fed cattle during December totaled 1.81 million, 3 percent above 2000 but 2 percent below 1999.

Other disappearance totaled 93,000 during December, 2 percent below 2000 but 3 percent above 1999.

Cattle on Feed in Historic 7 States Down 2 Percent

Cattle on feed January 1, 2002, in the historic 7 States for feedlots with capacity of 1,000 or more head totaled 9.9 million, down 2 percent from the previous year but 2 percent above January 1, 2000. The inventory included 6.08 million steers and steer calves, up 2 percent from the previous year. This group accounted for 61 percent of the total inventory. Heifers and heifer calves accounted for 3.77 million head, down 8 percent from January 1, 2001.

Placements in feedlots during December totaled 1.33 million, 8 percent below 2000 and 6 percent below 1999.

Marketings during December totaled 1.55 million, 3 percent above 2000 but 3 percent below 1999.

Other disappearance during December was 78,000 head, up 1 percent from 2000 and 4 percent above 1999.

**Cattle on Feed: Number on Feed, Placements, Marketings, and
Other Disappearance, 1,000+ Capacity Feedlots,
United States, January 1, 2000-2002**

Item	Number			2002 as % of	
	2000	2001	2002	2000	2001
	<i>1,000 Head</i>	<i>1,000 Head</i>	<i>1,000 Head</i>	<i>Percent</i>	<i>Percent</i>
On Feed Dec 1 ¹	11,761	11,948	11,891	101	100
Placed on Feed During Dec	1,646	1,699	1,578	96	93
Fed Cattle Marketed During Dec	1,842	1,754	1,811	98	103
Other Disappearance During Dec ²	90	95	93	103	98
On Feed Jan 1 ¹	11,475	11,798	11,565	101	98

¹ Cattle and calves on feed are animals for slaughter market being fed a ration of grain or other concentrates and are expected to produce a carcass that will grade select or better.

² Includes death loss, movement from feedlots to pasture, and shipments to other feedlots for further feeding.

**Cattle on Feed: Number on Feed, Placements, Marketings, and
Other Disappearance, 1,000+ Capacity Feedlots,
United States, December 1, 1999-2001**

Item	Number			2001 as % of	
	1999	2000	2001	1999	2000
	<i>1,000 Head</i>	<i>1,000 Head</i>	<i>1,000 Head</i>	<i>Percent</i>	<i>Percent</i>
On Feed Nov 1 ¹	11,475	11,864	11,863	103	100
Placed on Feed During Nov	2,170	2,014	1,908	88	95
Fed Cattle Marketed During Nov	1,801	1,825	1,800	100	99
Other Disappearance During Nov ²	83	105	80	96	76
On Feed Dec 1 ¹	11,761	11,948	11,891	101	100

¹ Cattle and calves on feed are animals for slaughter market being fed a ration of grain or other concentrates and are expected to produce a carcass that will grade select or better.

² Includes death loss, movement from feedlots to pasture, and shipments to other feedlots for further feeding.

**Cattle on Feed: Number on Feed by Class, 1,000+ Capacity Feedlots,
United States, January 1, 2000-2002**

Item	Number			2002 as % of	
	2000	2001	2002	2000	2001
	<i>1,000 Head</i>	<i>1,000 Head</i>	<i>1,000 Head</i>	<i>Percent</i>	<i>Percent</i>
Class on Feed Jan 1					
Steers and Steer Calves	6,840	7,018	7,103	104	101
Heifers and Heifer Calves	4,574	4,696	4,375	96	93
Cows and Bulls	61	84	87	143	104

**Cattle on Feed: Number on Feed, Placements, Marketings, and
Other Disappearance, 1,000+ Capacity Feedlots,
7 States, January 1, 2000-2002 ¹**

Item	Number			2002 as % of	
	2000	2001	2002	2000	2001
	<i>1,000 Head</i>	<i>1,000 Head</i>	<i>1,000 Head</i>	<i>Percent</i>	<i>Percent</i>
On Feed Dec 1 ²	10,020	10,213	10,203	102	100
Placed on Feed During Dec	1,408	1,440	1,330	94	92
Fed Cattle Marketed During Dec	1,601	1,500	1,545	97	103
Other Disappearance During Dec ³	75	77	78	104	101
On Feed Jan 1 ²	9,752	10,076	9,910	102	98

¹ The 7 States include AZ, CA, CO, IA, KS, NE, and TX.

² Cattle and calves on feed are animals for slaughter market being fed a ration of grain or other concentrates and are expected to produce a carcass that will grade select or better.

³ Includes death loss, movement from feedlots to pasture, and shipments to other feedlots for further feeding.

**Cattle on Feed: Number on Feed, Placements, Marketings, and
Other Disappearance, 1,000+ Capacity Feedlots,
7 States, December 1, 1999-2001 ¹**

Item	Number			2001 as % of	
	1999	2000	2001	1999	2000
	<i>1,000 Head</i>	<i>1,000 Head</i>	<i>1,000 Head</i>	<i>Percent</i>	<i>Percent</i>
On Feed Nov 1 ²	9,789	10,192	10,231	105	100
Placed on Feed During Nov	1,823	1,678	1,581	87	94
Fed Cattle Marketed During Nov	1,530	1,568	1,541	101	98
Other Disappearance During Nov ³	62	89	68	110	76
On Feed Dec 1 ²	10,020	10,213	10,203	102	100

¹ The 7 States include AZ, CA, CO, IA, KS, NE, and TX.

² Cattle and calves on feed are animals for slaughter market being fed a ration of grain or other concentrates and are expected to produce a carcass that will grade select or better.

³ Includes death loss, movement from feedlots to pasture, and shipments to other feedlots for further feeding.

**Cattle on Feed: Number on Feed by Class, 1,000+ Capacity Feedlots,
7 States, January 1, 2000-2002 ¹**

Item	Number			2002 as % of	
	2000	2001	2002	2000	2001
	<i>1,000 Head</i>	<i>1,000 Head</i>	<i>1,000 Head</i>	<i>Percent</i>	<i>Percent</i>
Class on Feed Jan 1					
Steers and Steer Calves	5,768	5,936	6,077	105	102
Heifers and Heifer Calves	3,942	4,081	3,769	96	92
Cows and Bulls	42	59	64	152	108

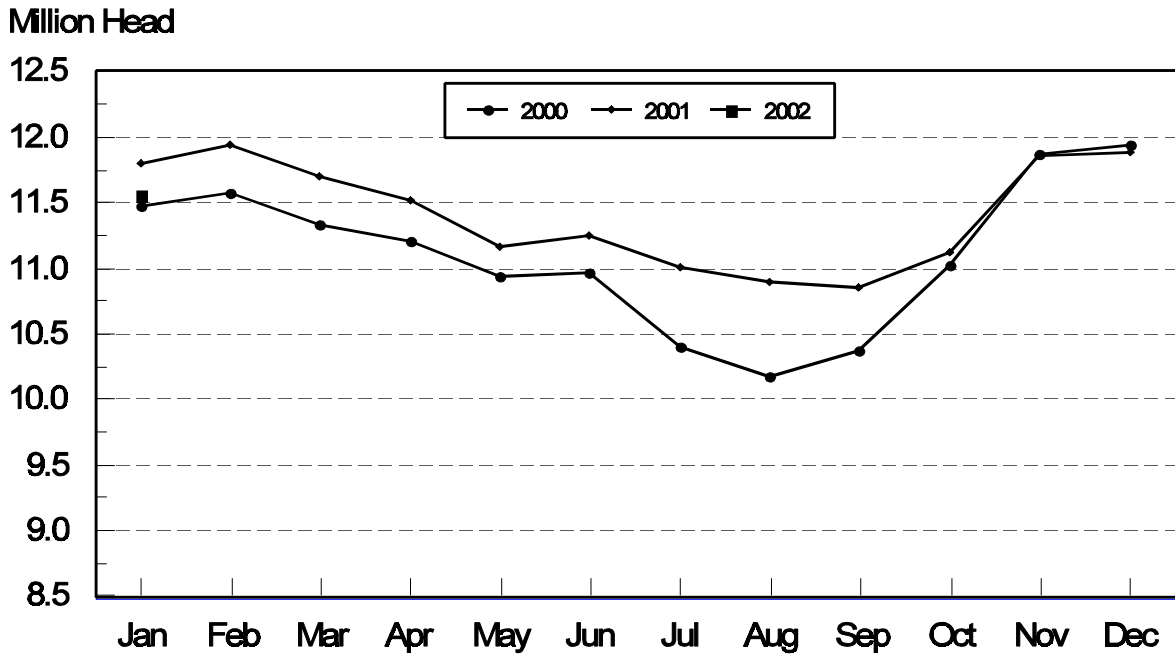
¹ The 7 States include AZ, CA, CO, IA, KS, NE, and TX.

**Cattle on Feed: Number on Feed, 1,000+ Capacity Feedlots,
by Month, State, and United States 2001-2002 ¹**

State	Jan 1, 2001	Dec 1, 2001	Jan 1, 2002		
			Number	as % of 2001	as % of Dec
	<i>1,000 Head</i>	<i>1,000 Head</i>	<i>1,000 Head</i>	<i>Percent</i>	<i>Percent</i>
AZ	301	303	305	101	101
CA	450	490	480	107	98
CO	1,210	1,160	1,180	98	102
ID	320	340	330	103	97
IA	385	350	355	92	101
KS	2,400	2,640	2,480	103	94
NE	2,400	2,270	2,230	93	98
NM	115	108	108	94	100
OK	410	385	360	88	94
SD	202	195	195	97	100
TX	2,930	2,990	2,880	98	96
WA	250	260	247	99	95
Oth Sts	425	400	415	98	104
US	11,798	11,891	11,565	98	97

¹ Cattle and calves on feed are animals for slaughter market being fed a ration of grain or other concentrates and are expected to produce a carcass that will grade select or better.

**United States Cattle on Feed
1,000+ Capacity Feedlots**



**Cattle on Feed: Number Placed on Feed, 1,000+ Capacity Feedlots,
by Month, State, and United States 2000-2001**

State	During Dec 2000	During Nov 2001	During Dec 2001		
			Number	as % of 2000	as % of Nov
	<i>1,000 Head</i>	<i>1,000 Head</i>	<i>1,000 Head</i>	<i>Percent</i>	<i>Percent</i>
AZ	30	31	30	100	97
CA	62	70	50	81	71
CO	170	175	165	97	94
ID	58	74	51	88	69
IA	38	75	55	145	73
KS	420	410	370	88	90
NE	340	390	300	88	77
NM	16	15	14	88	93
OK	57	59	42	74	71
SD	31	53	35	113	66
TX	380	430	360	95	84
WA	53	48	38	72	79
Oth Sts	44	78	68	155	87
US	1,699	1,908	1,578	93	83

**Cattle on Feed: Number Placed on Feed by Weight Group, 1,000+ Capacity
Feedlots, by Month, State, and United States, 2000-2001**

State	During December									
	Under 600		600-699		700-799		800 Plus		Total	
	2000	2001	2000	2001	2000	2001	2000	2001	2000	2001
	<i>1,000 Head</i>	<i>1,000 Head</i>	<i>1,000 Head</i>	<i>1,000 Head</i>	<i>1,000 Head</i>	<i>1,000 Head</i>	<i>1,000 Head</i>	<i>1,000 Head</i>	<i>1,000 Head</i>	<i>1,000 Head</i>
CO	35	36	47	52	65	50	23	27	170	165
KS	105	65	160	120	100	125	55	60	420	370
NE	59	62	104	93	87	80	90	65	340	300
TX	145	115	120	115	90	85	25	45	380	360
Oth Sts	160	140	85	95	64	73	80	75	389	383
US	504	418	516	475	406	413	273	272	1,699	1,578
	During November									
	Under 600		600-699		700-799		800 Plus		Total	
	2000	2001	2000	2001	2000	2001	2000	2001	2000	2001
	<i>1,000 Head</i>	<i>1,000 Head</i>	<i>1,000 Head</i>	<i>1,000 Head</i>	<i>1,000 Head</i>	<i>1,000 Head</i>	<i>1,000 Head</i>	<i>1,000 Head</i>	<i>1,000 Head</i>	<i>1,000 Head</i>
CO	62	57	45	49	45	43	28	26	180	175
KS	180	115	135	145	95	95	60	55	470	410
NE	120	133	120	119	95	60	75	78	410	390
TX	180	155	140	155	95	95	25	25	440	430
Oth Sts	215	195	119	120	75	88	105	100	514	503
US	757	655	559	588	405	381	293	284	2,014	1,908

**Cattle on Feed: Number Marketed, 1,000+ Capacity Feedlots,
by Month, State, and United States 2000-2001**

State	During Dec 2000	During Nov 2001	During Dec 2001		
			Number	as % of 2000	as % of Nov
	<i>1,000 Head</i>	<i>1,000 Head</i>	<i>1,000 Head</i>	<i>Percent</i>	<i>Percent</i>
AZ	23	27	26	113	96
CA	52	45	50	96	111
CO	180	180	135	75	75
ID	60	61	59	98	97
IA	45	64	49	109	77
KS	460	420	510	111	121
NE	340	305	325	96	107
NM	13	14	13	100	93
OK	59	66	65	110	98
SD	27	29	34	126	117
TX	400	500	450	113	90
WA	48	45	47	98	104
Oth Sts	47	44	48	102	109
US	1,754	1,800	1,811	103	101

**Cattle on Feed: Other Disappearance, 1,000+ Capacity Feedlots,
by Month, State, and United States 2000-2001 ¹**

State	During Dec 2000	During Nov 2001	During Dec 2001		
			Number	as % of 2000	as % of Nov
	<i>1,000 Head</i>	<i>1,000 Head</i>	<i>1,000 Head</i>	<i>Percent</i>	<i>Percent</i>
AZ	4	2	2	50	100
CA	10	5	10	100	200
CO	10	5	10	100	200
ID	3	3	2	67	67
IA	3	1	1	33	100
KS	20	20	20	100	100
NE	10	15	15	150	100
NM	1	1	1	100	100
OK	3	3	2	67	67
SD	2	0	1	50	
TX	20	20	20	100	100
WA	2	1	4	200	400
Oth Sts	7	4	5	71	125
US	95	80	93	98	116

¹ Includes death loss, movement from feedlots to pasture, and shipments to other feedlots for further feeding.

**Cattle on Feed: Number on Feed by Class, 1,000+ Capacity Feedlots,
by Quarter, State, and United States, 2001-2002**

State	Steers & Steer Calves			Heifers & Heifer Calves			Cows and Bulls		
	Jan 1, 2001	Oct 1, 2001	Jan 1, 2002	Jan 1, 2001	Oct 1, 2001	Jan 1, 2002	Jan 1, 2001	Oct 1, 2001	Jan 1, 2002
	<i>1,000 Head</i>	<i>1,000 Head</i>	<i>1,000 Head</i>	<i>1,000 Head</i>	<i>1,000 Head</i>	<i>1,000 Head</i>	<i>1,000 Head</i>	<i>1,000 Head</i>	<i>1,000 Head</i>
AZ	286	295	302	15	3	3	0	0	0
CA	400	430	440	49	35	40	1	0	0
CO	670	570	675	530	485	500	10	5	5
ID	220	214	216	97	95	107	3	1	7
IA	250	200	230	135	109	124	0	1	1
KS	1,320	1,520	1,400	1,078	1,015	1,070	2	5	10
NE	1,380	990	1,330	975	935	855	45	25	45
NM	51	43	50	64	54	58	0	0	0
OK	245	215	210	162	175	150	3	0	0
SD	114	74	99	77	58	88	11	4	8
TX	1,630	1,685	1,700	1,299	1,300	1,177	1	5	3
WA	162	161	151	88	83	96	0	0	0
Oth Sts	290	230	300	127	100	107	8	5	8
US	7,018	6,627	7,103	4,696	4,447	4,375	84	51	87

Terms and Definitions of Cattle on Feed Estimates

Cattle on feed are animals being fed a ration of grain, silage, hay and/or protein supplement for slaughter market that are expected to produce a carcass that will grade select or better. It excludes cattle being "backgrounded only" for later sale as feeders or later placement in another feedlot.

Placements are cattle put into a feedlot, fed a ration which will produce a carcass that will grade select or better, and are intended for the slaughter market.

Marketings are cattle shipped out of feedlots to a slaughter market.

Other disappearance includes death loss, movement from feedlots to pasture, and shipments to other feedlots for further feeding.

Reliability of Cattle on Feed Estimates

Survey Procedures: During January and July all known feedlots in the U.S. with capacity of 1,000 or more head are surveyed to provide data for cattle on feed estimates. During the other months, all known feedlots from 17 States are surveyed. The 17 States account for 98 percent of the cattle on feed in feedlots with capacity of 1,000 or more head.

Estimating Procedures: These cattle on feed estimates were prepared by the Agricultural Statistics Board after reviewing recommendations and analysis submitted by each State office. Regional and State survey data were reviewed for reasonableness with each other and with estimates from the previous month when setting the current estimates.

Revision Policy: Revisions to previous estimates are made to improve month to month relationships. Estimates for the previous month are subject to revision in all States each month when current estimates are made. In February, all monthly estimates for the previous year, and the number of feedlots and annual marketings from two years ago are reviewed and subject to revisions. The reviews are primarily based on slaughter data, state check-off or brand data, and any other data that may have been received after the original estimate was made. Estimates will also be reviewed after data from the Census of Agriculture are available. No revisions will be made after that date and estimates become final.

Reliability: Since all 1000+ capacity cattle on feed operators in every State are not included in the monthly survey, survey estimates are subject to sampling variability. Survey results are also subject to non-sampling errors such as omissions, duplications, and mistakes in reporting, recording, and processing the data. The effects of these errors cannot be measured directly. They are minimized through rigid quality controls in the data collection process and through a careful review of all reported data for consistency and reasonableness.

The next "Cattle on Feed" report will be released at 3 p.m. ET on February 15, 2002.

The United States Department of Agriculture (USDA) prohibits discrimination in all its programs on the basis of race, color, national origin, gender, religion, age, disability, political beliefs, sexual orientation, and marital or family status. (Not all prohibited bases apply to all programs.) Persons with disabilities who require alternative means for communication of program information (braille, large print, audiotape, etc.) should contact the USDA's TARGET Center at 202-720-2600 (voice and TDD).

To file a complaint of discrimination, write USDA, Director, Office of Civil Rights, Room 326-W, Whitten Building, 1400 Independence Avenue, SW, Washington, D.C., 20250-9410, or call 202-720-5964 (voice or TDD). USDA is an equal opportunity provider and employer.

ACCESS TO REPORTS!!

For your convenience, there are several ways to obtain NASS reports, data products, and services:

INTERNET ACCESS

All NASS reports are available free of charge on the worldwide Internet. For access, connect to the Internet and go to the NASS Home Page at: <http://www.usda.gov/nass/>. Select "Today's Reports" or Publications and then Reports by Calendar or Publications and then Search, by Title or Subject.

E-MAIL SUBSCRIPTION

There are two options for subscribing via e-mail. All NASS reports are available by subscription free of charge direct to your e-mail address. 1) Starting with the NASS Home Page at <http://www.usda.gov/nass/>, click on **Publications**, then click on the **Subscribe by E-mail** button which takes you to the page describing e-mail delivery of reports. Finally, click on **Go to the Subscription Page** and follow the instructions. 2) If you do NOT have Internet access, send an e-mail message to: usda-reports@usda.mannlib.cornell.edu. In the body of the message type the word: **list**.

AUTOFAX ACCESS

NASSFax service is available for some reports from your fax machine. Please call 202-720-2000, using the handset attached to your fax. Respond to the voice prompts. Document 0411 is a list of available reports.

PRINTED REPORTS OR DATA PRODUCTS

CALL OUR TOLL-FREE ORDER DESK: 800-999-6779 (U.S. and Canada)
Other areas, please call 703-605-6220 FAX: 703-605-6900
(Visa, MasterCard, check, or money order acceptable for payment.)

ASSISTANCE

For **assistance** with general agricultural statistics or further information about NASS or its products or services, contact the **Agricultural Statistics Hotline** at **800-727-9540**, 7:30 a.m. to 4:00 p.m. ET, or e-mail: nass@nass.usda.gov.