



# Cattle on Feed

---

Released February 15, 2002, by the National Agricultural Statistics Service (NASS), Agricultural Statistics Board, U.S. Department of Agriculture. For information on "Cattle on Feed" call Steve Anderson at (202) 720-3040, office hours 7:30 a.m. to 4:00 p.m. ET.

## U.S. Cattle on Feed Down 3 Percent

**Cattle and calves on feed** for slaughter market in the United States for feedlots with capacity of 1,000 or more head totaled 11.6 million head on February 1, 2002. The inventory was 3 percent below February 1, 2001 and slightly below February 1, 2000.

**Placements** in feedlots during January totaled 2.17 million, 4 percent below 2001 and 2 percent below 2000. Net placements were 2.08 million. During January, placements of cattle and calves weighing less than 600 pounds were 381,000, 600-699 pounds were 614,000, 700-799 pounds were 734,000, and 800 pounds and greater were 437,000.

**Marketings** of fed cattle during January totaled 2.08 million, up 2 percent from both 2001 and 2000.

**Other disappearance** totaled 89,000 during January, 14 percent above 2001 and 29 percent above 2000.

## Cattle on Feed in Historic 7 States Down 3 Percent

**Cattle on feed** February 1, 2002, in the historic 7 States for feedlots with capacity of 1,000 or more head totaled 9.9 million, down 3 percent from the previous year but 1 percent above February 1, 2000.

**Placements** in feedlots during January totaled 1.90 million, 3 percent below 2001 and 2 percent below 2000.

**Marketings** during January totaled 1.79 million, up 2 percent from 2001 and 3 percent above 2000.

**Other disappearance** during January was 74,000 head, 9 percent above 2001 and 45 percent above 2000.

## 2001 Cattle on Feed and Annual Size Group Estimates

This report contains the 2001 monthly cattle on feed estimates for feedlots with capacity of 1,000 or more head. Also included are the number of feedlots, inventory, and annual marketings by size group for 2000 and 2001. Minor revisions were made to the 2001 monthly estimates and the 2000 number of feedlots, inventory, and annual marketings by size group. Data for total U.S. capacity of 1,000 or more head feedlots are also published in this issue. These data are measured by the number of head.

**Cattle on Feed: Number on Feed, Placements, Marketings, and  
Other Disappearance, 1,000+ Capacity Feedlots,  
United States, February 1, 2000-2002**

Item	Number			2002 as % of	
	2000	2001	2002	2000	2001
	<i>1,000 Head</i>	<i>1,000 Head</i>	<i>1,000 Head</i>	<i>Percent</i>	<i>Percent</i>
On Feed Jan 1 <sup>1</sup>	11,475	11,798	11,565	101	98
Placed on Feed During Jan	2,216	2,263	2,166	98	96
Fed Cattle Marketed During Jan	2,048	2,042	2,083	102	102
Other Disappearance During Jan <sup>2</sup>	69	78	89	129	114
On Feed Feb 1 <sup>1</sup>	11,574	11,941	11,559	100	97

<sup>1</sup> Cattle and calves on feed are animals for slaughter market being fed a ration of grain or other concentrates and are expected to produce a carcass that will grade select or better.

<sup>2</sup> Includes death loss, movement from feedlots to pasture, and shipments to other feedlots for further feeding.

**Cattle on Feed: Number on Feed, Placements, Marketings, and  
Other Disappearance, 1,000+ Capacity Feedlots,  
United States, January 1, 2000-2002**

Item	Number			2002 as % of	
	2000	2001	2002	2000	2001
	<i>1,000 Head</i>	<i>1,000 Head</i>	<i>1,000 Head</i>	<i>Percent</i>	<i>Percent</i>
On Feed Dec 1 <sup>1</sup>	11,761	11,948	11,891	101	100
Placed on Feed During Dec	1,646	1,699	1,578	96	93
Fed Cattle Marketed During Dec	1,842	1,754	1,811	98	103
Other Disappearance During Dec <sup>2</sup>	90	95	93	103	98
On Feed Jan 1 <sup>1</sup>	11,475	11,798	11,565	101	98

<sup>1</sup> Cattle and calves on feed are animals for slaughter market being fed a ration of grain or other concentrates and are expected to produce a carcass that will grade select or better.

<sup>2</sup> Includes death loss, movement from feedlots to pasture, and shipments to other feedlots for further feeding.

**Cattle on Feed: Number on Feed by Class, 1,000+ Capacity Feedlots,  
United States, January 1, 2000-2002**

Item	Number			2002 as % of	
	2000	2001	2002	2000	2001
	<i>1,000 Head</i>	<i>1,000 Head</i>	<i>1,000 Head</i>	<i>Percent</i>	<i>Percent</i>
Class on Feed Jan 1					
Steers and Steer Calves	6,840	7,018	7,103	104	101
Heifers and Heifer Calves	4,574	4,696	4,375	96	93
Cows and Bulls	61	84	87	143	104

**Cattle on Feed: Number on Feed, Placements, Marketings, and  
Other Disappearance, 1,000+ Capacity Feedlots,  
7 States, February 1, 2000-2002 <sup>1</sup>**

Item	Number			2002 as % of	
	2000	2001	2002	2000	2001
	<i>1,000 Head</i>	<i>1,000 Head</i>	<i>1,000 Head</i>	<i>Percent</i>	<i>Percent</i>
On Feed Jan 1 <sup>2</sup>	9,752	10,076	9,910	102	98
Placed on Feed During Jan	1,931	1,965	1,902	98	97
Fed Cattle Marketed During Jan	1,747	1,751	1,792	103	102
Other Disappearance During Jan <sup>3</sup>	51	68	74	145	109
On Feed Feb 1 <sup>2</sup>	9,885	10,222	9,946	101	97

<sup>1</sup> The 7 States include AZ, CA, CO, IA, KS, NE, and TX.

<sup>2</sup> Cattle and calves on feed are animals for slaughter market being fed a ration of grain or other concentrates and are expected to produce a carcass that will grade select or better.

<sup>3</sup> Includes death loss, movement from feedlots to pasture, and shipments to other feedlots for further feeding.

**Cattle on Feed: Number on Feed, Placements, Marketings, and  
Other Disappearance, 1,000+ Capacity Feedlots,  
7 States, January 1, 2000-2002 <sup>1</sup>**

Item	Number			2002 as % of	
	2000	2001	2002	2000	2001
	<i>1,000 Head</i>	<i>1,000 Head</i>	<i>1,000 Head</i>	<i>Percent</i>	<i>Percent</i>
On Feed Dec 1 <sup>2</sup>	10,020	10,213	10,203	102	100
Placed on Feed During Dec	1,408	1,440	1,330	94	92
Fed Cattle Marketed During Dec	1,601	1,500	1,545	97	103
Other Disappearance During Dec <sup>3</sup>	75	77	78	104	101
On Feed Jan 1 <sup>2</sup>	9,752	10,076	9,910	102	98

<sup>1</sup> The 7 States include AZ, CA, CO, IA, KS, NE, and TX.

<sup>2</sup> Cattle and calves on feed are animals for slaughter market being fed a ration of grain or other concentrates and are expected to produce a carcass that will grade select or better.

<sup>3</sup> Includes death loss, movement from feedlots to pasture, and shipments to other feedlots for further feeding.

**Cattle on Feed: Number on Feed by Class, 1,000+ Capacity Feedlots,  
7 States, January 1, 2000-2002 <sup>1</sup>**

Item	Number			2002 as % of	
	2000	2001	2002	2000	2001
	<i>1,000 Head</i>	<i>1,000 Head</i>	<i>1,000 Head</i>	<i>Percent</i>	<i>Percent</i>
Class on Feed Jan 1					
Steers and Steer Calves	5,768	5,936	6,077	105	102
Heifers and Heifer Calves	3,942	4,081	3,769	96	92
Cows and Bulls	42	59	64	152	108

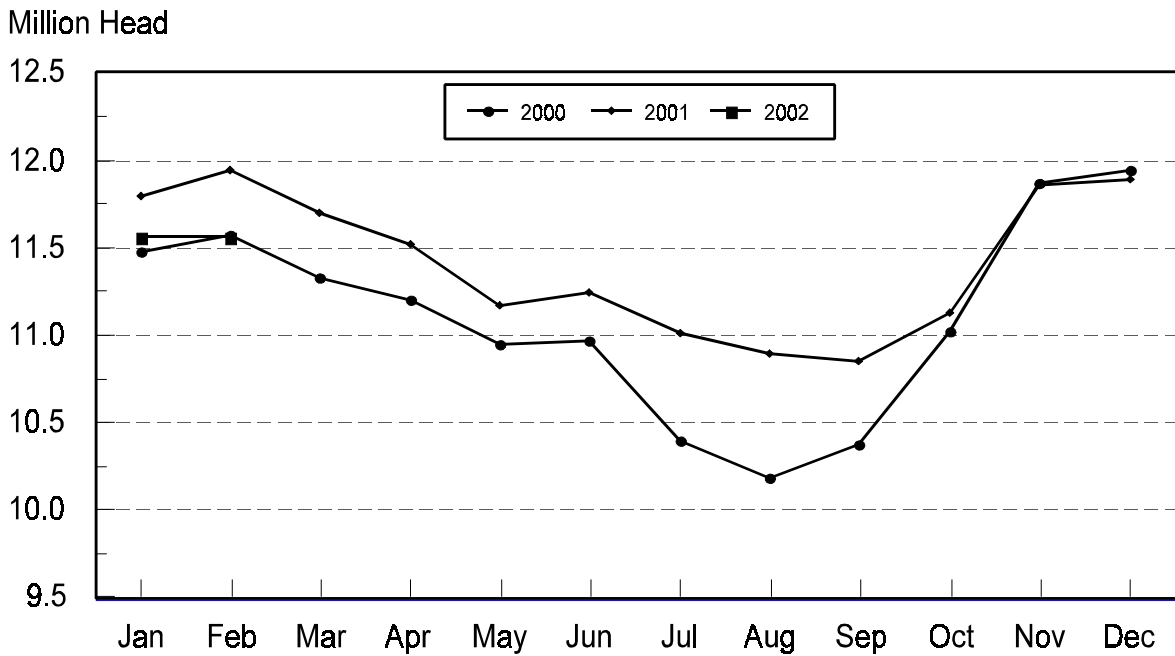
<sup>1</sup> The 7 States include AZ, CA, CO, IA, KS, NE, and TX.

**Cattle on Feed: Number on Feed, 1,000+ Capacity Feedlots,  
by Month, State, and United States 2001-2002 <sup>1</sup>**

State	Feb 1, 2001	Jan 1, 2002	Feb 1, 2002		
			Number	as % of 2001	as % of Jan
	<i>1,000 Head</i>	<i>1,000 Head</i>	<i>1,000 Head</i>	<i>Percent</i>	<i>Percent</i>
AZ	302	305	311	103	102
CA	445	480	475	107	99
CO	1,230	1,180	1,180	96	100
ID	325	330	320	98	97
IA	385	355	390	101	110
KS	2,500	2,480	2,450	98	99
NE	2,430	2,230	2,290	94	103
NM	116	108	106	91	98
OK	410	360	345	84	96
SD	205	195	200	98	103
TX	2,930	2,880	2,850	97	99
WA	243	247	237	98	96
Oth Sts	420	415	405	96	98
US	11,941	11,565	11,559	97	100

<sup>1</sup> Cattle and calves on feed are animals for slaughter market being fed a ration of grain or other concentrates and are expected to produce a carcass that will grade select or better.

**United States Cattle on Feed  
1,000+ Capacity Feedlots**



**Cattle on Feed: Number Placed on Feed, 1,000+ Capacity Feedlots,  
by Month, State, and United States 2001-2002**

State	During Jan 2001	During Dec 2001	During Jan 2002		
			Number	as % of 2001	as % of Dec
	<i>1,000 Head</i>	<i>1,000 Head</i>	<i>1,000 Head</i>	<i>Percent</i>	<i>Percent</i>
AZ	28	30	32	114	107
CA	60	50	59	98	118
CO	305	165	225	74	136
ID	71	51	57	80	112
IA	52	55	86	165	156
KS	580	370	530	91	143
NE	480	300	490	102	163
NM	11	14	8	73	57
OK	68	42	62	91	148
SD	35	35	46	131	131
TX	460	360	480	104	133
WA	55	38	41	75	108
Oth Sts	58	68	50	86	74
US	2,263	1,578	2,166	96	137

**Cattle on Feed: Number Placed on Feed by Weight Group, 1,000+ Capacity  
Feedlots, by Month, State, and United States, 2000-2002**

State	During January									
	Under 600		600-699		700-799		800 Plus		Total	
	2001	2002	2001	2002	2001	2002	2001	2002	2001	2002
	<i>1,000 Head</i>	<i>1,000 Head</i>	<i>1,000 Head</i>	<i>1,000 Head</i>	<i>1,000 Head</i>	<i>1,000 Head</i>	<i>1,000 Head</i>	<i>1,000 Head</i>	<i>1,000 Head</i>	<i>1,000 Head</i>
CO	45	30	91	74	120	84	49	37	305	225
KS	140	55	200	170	165	205	75	100	580	530
NE	39	61	170	139	156	170	115	120	480	490
TX	150	105	145	140	125	165	40	70	460	480
Oth Sts	125	130	110	91	98	110	105	110	438	441
US	499	381	716	614	664	734	384	437	2,263	2,166
State	During December									
	Under 600		600-699		700-799		800 Plus		Total	
	2000	2001	2000	2001	2000	2001	2000	2001	2000	2001
	<i>1,000 Head</i>	<i>1,000 Head</i>	<i>1,000 Head</i>	<i>1,000 Head</i>	<i>1,000 Head</i>	<i>1,000 Head</i>	<i>1,000 Head</i>	<i>1,000 Head</i>	<i>1,000 Head</i>	<i>1,000 Head</i>
CO	35	36	47	52	65	50	23	27	170	165
KS	105	65	160	120	100	125	55	60	420	370
NE	59	62	104	93	87	80	90	65	340	300
TX	145	115	120	115	90	85	25	45	380	360
Oth Sts	160	140	85	95	64	73	80	75	389	383
US	504	418	516	475	406	413	273	272	1,699	1,578

**Cattle on Feed: Number Marketed, 1,000+ Capacity Feedlots,  
by Month, State, and United States 2001-2002**

State	During Jan 2001	During Dec 2001	During Jan 2002		
			Number	as % of 2001	as % of Dec
	<i>1,000 Head</i>	<i>1,000 Head</i>	<i>1,000 Head</i>	<i>Percent</i>	<i>Percent</i>
AZ	25	26	25	100	96
CA	55	50	57	104	114
CO	275	135	215	78	159
ID	65	59	65	100	110
IA	51	49	50	98	102
KS	465	510	540	116	106
NE	430	325	405	94	125
NM	10	13	9	90	69
OK	65	65	74	114	114
SD	31	34	38	123	112
TX	450	450	500	111	111
WA	59	47	50	85	106
Oth Sts	61	48	55	90	115
US	2,042	1,811	2,083	102	115

**Cattle on Feed: Other Disappearance, 1,000+ Capacity Feedlots,  
by Month, State, and United States 2001-2002 <sup>1</sup>**

State	During Jan 2001	During Dec 2001	During Jan 2002		
			Number	as % of 2001	as % of Dec
	<i>1,000 Head</i>	<i>1,000 Head</i>	<i>1,000 Head</i>	<i>Percent</i>	<i>Percent</i>
AZ	2	2	1	50	50
CA	10	10	7	70	70
CO	10	10	10	100	100
ID	1	2	2	200	100
IA	1	1	1	100	100
KS	15	20	20	133	100
NE	20	15	25	125	167
NM	0	1	1		100
OK	3	2	3	100	150
SD	1	1	3	300	300
TX	10	20	10	100	50
WA	3	4	1	33	25
Oth Sts	2	5	5	250	100
US	78	93	89	114	96

<sup>1</sup> Includes death loss, movement from feedlots to pasture, and shipments to other feedlots for further feeding.

**Cattle on Feed: Number on Feed, 1,000+ Capacity Feedlots,  
by Month, State, 7-States, and United States, 2001 <sup>1</sup>**

State	Jan 1	Feb 1	Mar 1	Apr 1	May 1	Jun 1
	<i>1,000 Head</i>	<i>1,000 Head</i>	<i>1,000 Head</i>	<i>1,000 Head</i>	<i>1,000 Head</i>	<i>1,000 Head</i>
AZ	301	302	307	309	308	305
CA	450	445	440	435	435	450
CO	1,210	1,230	1,190	1,190	1,170	1,160
ID	320	325	320	330	330	320
IA	385	385	385	385	380	365
KS	2,400	2,500	2,470	2,460	2,380	2,400
NE	2,400	2,430	2,380	2,350	2,250	2,090
NM	115	116	111	97	83	81
OK	410	410	390	370	345	375
SD	202	205	207	215	215	200
TX	2,930	2,930	2,840	2,730	2,640	2,890
WA	250	243	245	257	254	244
7 States	10,076	10,222	10,012	9,859	9,563	9,660
Oth Sts	425	420	410	395	380	365
US	11,798	11,941	11,695	11,523	11,170	11,245
	Jul 1	Aug 1	Sep 1	Oct 1	Nov 1	Dec 1
	<i>1,000 Head</i>	<i>1,000 Head</i>	<i>1,000 Head</i>	<i>1,000 Head</i>	<i>1,000 Head</i>	<i>1,000 Head</i>
AZ	291	297	293	298	301	303
CA	470	475	470	465	470	490
CO	1,110	1,060	1,010	1,060	1,170	1,160
ID	320	310	305	310	330	340
IA	345	325	310	310	340	350
KS	2,350	2,420	2,490	2,540	2,670	2,640
NE	1,900	1,810	1,820	1,950	2,200	2,270
NM	98	101	96	97	108	108
OK	390	390	395	390	395	385
SD	175	154	140	136	171	195
TX	3,000	3,000	2,990	2,990	3,080	2,990
WA	227	229	231	244	258	260
7 States	9,466	9,387	9,383	9,613	10,231	10,203
Oth Sts	335	320	305	335	370	400
US	11,011	10,891	10,855	11,125	11,863	11,891

<sup>1</sup> Cattle and calves on feed are animals for slaughter market being fed a ration of grain or other concentrates and are expected to produce a carcass that will grade select or better.





**Cattle on Feed: Number Placed on Feed by Weight Group, 1,000+ Capacity  
Feedlots, by Month, State, and United States, 2000-2001**

State	During December				
	Under 600	600-699	700-799	800 Plus	Total
	<i>1,000 Head</i>	<i>1,000 Head</i>	<i>1,000 Head</i>	<i>1,000 Head</i>	<i>1,000 Head</i>
CO	35	47	65	23	170
KS	105	160	100	55	420
NE	59	104	87	90	340
TX	145	120	90	25	380
Oth Sts	160	85	64	80	389
US	504	516	406	273	1,699
	During January				
	Under 600	600-699	700-799	800 Plus	Total
	<i>1,000 Head</i>	<i>1,000 Head</i>	<i>1,000 Head</i>	<i>1,000 Head</i>	<i>1,000 Head</i>
CO	45	91	120	49	305
KS	140	200	165	75	580
NE	39	170	156	115	480
TX	150	145	125	40	460
Oth Sts	125	110	98	105	438
US	499	716	664	384	2,263
	During February				
	Under 600	600-699	700-799	800 Plus	Total
	<i>1,000 Head</i>	<i>1,000 Head</i>	<i>1,000 Head</i>	<i>1,000 Head</i>	<i>1,000 Head</i>
CO	36	40	74	45	195
KS	50	110	120	55	335
NE	25	82	118	85	310
TX	105	100	110	35	350
Oth Sts	120	70	95	105	390
US	336	402	517	325	1,580

--continued

**Cattle on Feed: Number Placed on Feed by Weight Group, 1,000+ Capacity  
Feedlots, by Month, State, and United States, 2000-2001 (continued)**

State	During March				
	Under 600	600-699	700-799	800 Plus	Total
	<i>1,000 Head</i>	<i>1,000 Head</i>	<i>1,000 Head</i>	<i>1,000 Head</i>	<i>1,000 Head</i>
CO	28	38	85	69	220
KS	60	95	150	90	395
NE	31	69	109	111	320
TX	100	145	155	55	455
Oth Sts	110	67	115	160	452
US	329	414	614	485	1,842
	During April				
	Under 600	600-699	700-799	800 Plus	Total
	<i>1,000 Head</i>	<i>1,000 Head</i>	<i>1,000 Head</i>	<i>1,000 Head</i>	<i>1,000 Head</i>
CO	19	40	57	44	160
KS	75	80	130	65	350
NE	40	68	77	65	250
TX	105	140	140	55	440
Oth Sts	95	56	90	110	351
US	334	384	494	339	1,551
	During May				
	Under 600	600-699	700-799	800 Plus	Total
	<i>1,000 Head</i>	<i>1,000 Head</i>	<i>1,000 Head</i>	<i>1,000 Head</i>	<i>1,000 Head</i>
CO	24	45	69	52	190
KS	80	120	210	120	530
NE	60	64	130	121	375
TX	205	205	270	130	810
Oth Sts	130	75	120	142	467
US	499	509	799	565	2,372

--continued

**Cattle on Feed: Number Placed on Feed by Weight Group, 1,000+ Capacity  
Feedlots, by Month, State, and United States, 2000-2001 (continued)**

State	During June				
	Under 600	600-699	700-799	800 Plus	Total
	<i>1,000 Head</i>	<i>1,000 Head</i>	<i>1,000 Head</i>	<i>1,000 Head</i>	<i>1,000 Head</i>
CO	22	27	66	45	160
KS	80	110	170	85	445
NE	47	65	80	128	320
TX	145	175	210	90	620
Oth Sts	125	65	105	125	420
US	419	442	631	473	1,965
	During July				
	Under 600	600-699	700-799	800 Plus	Total
	<i>1,000 Head</i>	<i>1,000 Head</i>	<i>1,000 Head</i>	<i>1,000 Head</i>	<i>1,000 Head</i>
CO	30	46	67	52	195
KS	85	160	210	115	570
NE	39	58	109	114	320
TX	190	120	140	60	510
Oth Sts	125	60	80	126	391
US	469	444	606	467	1,986
	During August				
	Under 600	600-699	700-799	800 Plus	Total
	<i>1,000 Head</i>	<i>1,000 Head</i>	<i>1,000 Head</i>	<i>1,000 Head</i>	<i>1,000 Head</i>
CO	29	38	73	70	210
KS	95	145	220	110	570
NE	51	60	144	180	435
TX	220	165	125	60	570
Oth Sts	115	64	105	135	419
US	510	472	667	555	2,204

--continued

**Cattle on Feed: Number Placed on Feed by Weight Group, 1,000+ Capacity  
Feedlots, by Month, State, and United States, 2000-2001 (continued)**

State	During September				
	Under 600	600-699	700-799	800 Plus	Total
	<i>1,000 Head</i>	<i>1,000 Head</i>	<i>1,000 Head</i>	<i>1,000 Head</i>	<i>1,000 Head</i>
CO	28	*40	*81	*116	*265
KS	110	115	145	100	470
NE	75	68	139	168	450
TX	185	150	100	45	480
Oth Sts	130	75	96	175	476
US	528	*448	*561	*604	*2,141
	During October				
	Under 600	600-699	700-799	800 Plus	Total
	<i>1,000 Head</i>	<i>1,000 Head</i>	<i>1,000 Head</i>	<i>1,000 Head</i>	<i>1,000 Head</i>
CO	*66	*77	*94	*78	*315
KS	150	155	175	80	560
NE	225	161	91	113	590
TX	230	245	145	60	680
Oth Sts	220	120	87	130	557
US	*891	*758	*592	*461	*2,702
	During November				
	Under 600	600-699	700-799	800 Plus	Total
	<i>1,000 Head</i>	<i>1,000 Head</i>	<i>1,000 Head</i>	<i>1,000 Head</i>	<i>1,000 Head</i>
CO	57	49	43	26	175
KS	115	145	95	55	410
NE	133	119	60	78	390
TX	155	155	95	25	430
Oth Sts	195	120	88	100	503
US	655	588	381	284	1,908

\* Revised.





**Cattle on Feed: Number on Feed by Class, 1,000+ Capacity Feedlots,  
by Quarter, State, 7-States, and United States, 2001**

State	Steers & Steer Calves				Heifers & Heifer Calves			
	Jan 1	Apr 1	Jul 1	Oct 1	Jan 1	Apr 1	Jul 1	Oct 1
	<i>1,000 Head</i>	<i>1,000 Head</i>	<i>1,000 Head</i>	<i>1,000 Head</i>	<i>1,000 Head</i>	<i>1,000 Head</i>	<i>1,000 Head</i>	<i>1,000 Head</i>
AZ	286	300	286	295	15	9	5	3
CA	400	400	410	430	49	35	60	35
CO	670	650	615	570	530	535	490	485
ID	220	218	218	214	97	107	95	95
IA	250	245	225	200	135	140	119	109
KS	1,320	1,400	1,295	1,520	1,078	1,055	1,050	1,015
NE	1,380	1,330	1,025	990	975	970	840	935
NM	51	45	42	43	64	52	56	54
OK	245	210	220	215	162	159	170	175
SD	114	131	102	74	77	76	65	58
TX	1,630	1,560	1,665	1,685	1,299	1,169	1,330	1,300
WA	162	188	156	161	88	69	71	83
7 States	5,936	5,885	5,521	5,690	4,081	3,913	3,894	3,882
Oth Sts	290	280	235	230	127	110	95	100
US	7,018	6,957	6,494	6,627	4,696	4,486	4,446	4,447
<b>Cows and Bulls</b>								
	Jan 1	Apr 1	Jul 1	Oct 1				
	<i>1,000 Head</i>	<i>1,000 Head</i>	<i>1,000 Head</i>	<i>1,000 Head</i>				
AZ	0	0	0	0				
CA	1	0	0	0				
CO	10	5	5	5				
ID	3	5	7	1				
IA	0	0	1	1				
KS	2	5	5	5				
NE	45	50	35	25				
NM	0	0	0	0				
OK	3	1	0	0				
SD	11	8	8	4				
TX	1	1	5	5				
WA	0	0	0	0				
7 States	59	61	51	41				
Oth Sts	8	5	5	5				
US	84	80	71	51				

**Cattle on Feed: Number of Feedlots, Inventory, and Marketings,  
by Size of Feedlot, State, and United States 2000-2001 <sup>1</sup>**

Year and State	Feedlot Capacity in Number of Head					
	1,000 - 1,999			2,000 - 3,999		
	Lots	Inventory	Cattle Marketed	Lots	Inventory	Cattle Marketed
	<i>Number</i>	<i>1,000 Head</i>	<i>1,000 Head</i>	<i>Number</i>	<i>1,000 Head</i>	<i>1,000 Head</i>
2000						
AZ						
CA	<sup>2</sup> 3	<sup>2</sup> 3	<sup>2</sup> 6			
CO	48	28	55	35	47	90
ID	10	6	10	13	13	30
IA	200	155	250	81	125	191
KS	37	25	45	45	60	115
NE	265	150	320	200	310	570
NM						
OK	<sup>2</sup> 4	<sup>2</sup> 7	<sup>2</sup> 13			
SD	50	34	62	43	57	96
TX	6	3	8	6	9	17
WA	<sup>2</sup> 7	<sup>2</sup> 18	<sup>2</sup> 29			
Oth Sts	185	115	160	71	100	180
US	804	517	912	500	730	1,307
2001						
AZ						
CA	<sup>2</sup> 4	<sup>2</sup> 4	<sup>2</sup> 5			
CO	47	24	45	39	49	80
ID	11	6	11	13	25	36
IA	190	150	220	85	130	210
KS	33	20	35	48	65	130
NE	280	150	310	209	300	580
NM						
OK	<sup>2</sup> 3	<sup>2</sup> 3	<sup>2</sup> 8			
SD	59	38	72	44	57	106
TX	6	3	8	6	9	22
WA	<sup>2</sup> 7	<sup>2</sup> 17	<sup>2</sup> 29			
Oth Sts	180	105	155	70	105	175
US	811	499	857	520	748	1,351

See footnote(s) at end of table.

--continued



**Cattle on Feed: Number of Feedlots, Inventory, and Marketings, by  
Size of Feedlot, State, and United States 2000-2001 <sup>1</sup> (continued)**

Year and State	Feedlot Capacity in Number of Head					
	4,000 - 7,999			8,000 - 15,999		
	Lots	Inventory	Cattle Marketed	Lots	Inventory	Cattle Marketed
	<i>Number</i>	<i>1,000 Head</i>	<i>1,000 Head</i>	<i>Number</i>	<i>1,000 Head</i>	<i>1,000 Head</i>
2000						
AZ	2	6	6			
CA	4	17	20	3	3	11
CO	34	120	255	16	130	260
ID	12	37	50	<sup>2</sup> 15	<sup>2</sup> 264	<sup>2</sup> 610
IA	<sup>2</sup> 29	<sup>2</sup> 105	<sup>2</sup> 165			
KS	36	130	250	44	405	840
NE	126	480	930	65	590	1,200
NM	<sup>2</sup> 6	<sup>2</sup> 19	<sup>2</sup> 44			
OK	10	20	41	5	39	69
SD	21	62	111	<sup>2</sup> 6	<sup>2</sup> 49	<sup>2</sup> 115
TX	15	53	125	29	255	470
WA				<sup>2</sup> 6	<sup>2</sup> 72	<sup>2</sup> 150
Oth Sts	40	105	175	10	31	60
US	335	1,146	2,151	194	1,563	3,112
2001						
AZ	2	6	7			
CA	5	19	21	4	3	3
CO	34	107	190	20	130	250
ID	10	32	57	<sup>2</sup> 16	<sup>2</sup> 267	<sup>2</sup> 656
IA	<sup>2</sup> 25	<sup>2</sup> 75	<sup>2</sup> 186			
KS	45	155	270	37	340	710
NE	126	430	850	64	540	1,070
NM	<sup>2</sup> 6	<sup>2</sup> 14	<sup>2</sup> 33			
OK	10	27	47	5	26	50
SD	18	48	100	<sup>2</sup> 7	<sup>2</sup> 52	<sup>2</sup> 112
TX	14	38	90	27	200	450
WA				<sup>2</sup> 6	<sup>2</sup> 67	<sup>2</sup> 158
Oth Sts	35	105	150	11	38	75
US	328	1,046	1,947	192	1,400	2,885

See footnote(s) at end of table.

--continued

**Cattle on Feed: Number of Feedlots, Inventory, and Marketings, by  
Size of Feedlot, State, and United States 2000-2001 <sup>1</sup> (continued)**

Year and State	Feedlot Capacity in Number of Head					
	16,000 - 31,999			32,000 and Over		
	Lots	Inventory	Cattle Marketed	Lots	Inventory	Cattle Marketed
	<i>Number</i>	<i>1,000 Head</i>	<i>1,000 Head</i>	<i>Number</i>	<i>1,000 Head</i>	<i>1,000 Head</i>
2000						
AZ	2	36	45	3	259	284
CA	6	85	120	6	342	451
CO	16	245	540	12	640	1,480
ID						
IA						
KS	37	730	1,740	26	1,050	2,380
NE	32	570	1,230	7	300	635
NM	3	53	85	1	43	54
OK	3	77	179	6	267	587
SD						
TX	32	580	1,160	49	2,030	4,410
WA				3	160	381
Oth Sts	<sup>2</sup> 4	<sup>2</sup> 74	<sup>2</sup> 165			
US	142	2,536	5,468	116	5,306	11,180
2001						
AZ	2	33	50	3	266	291
CA	5	93	110	6	361	467
CO	13	230	490	12	640	1,440
ID						
IA						
KS	35	710	1,560	27	1,190	2,590
NE	34	520	1,150	7	290	615
NM	3	53	83	1	41	59
OK	2	46	107	7	258	620
SD						
TX	36	590	1,160	49	2,040	4,300
WA				3	163	400
Oth Sts	<sup>2</sup> 4	<sup>2</sup> 62	<sup>2</sup> 137			
US	141	2,422	5,079	118	5,450	11,282

See footnote(s) at end of table.

--continued

**Cattle on Feed: Number of Feedlots, Inventory, and Marketings, by  
Size of Feedlot, State, and United States 2000-2001 <sup>1</sup> (continued)**

Year and State	Feedlot Capacity in Number of Head		
	Total - 1,000+ Capacity Feedlots		
	Lots	Inventory	Cattle Marketed
	<i>Number</i>	<i>1,000 Head</i>	<i>1,000 Head</i>
2000			
AZ	7	301	335
CA	22	450	608
CO	161	1,210	2,680
ID	50	320	700
IA	310	385	606
KS	225	2,400	5,370
NE	695	2,400	4,885
NM	10	115	183
OK	28	410	889
SD	120	202	384
TX	137	2,930	6,190
WA	16	250	560
Oth Sts	310	425	740
US	2,091	11,798	24,130
2001			
AZ	7	305	348
CA	24	480	606
CO	165	1,180	2,495
ID	50	330	760
IA	300	355	616
KS	225	2,480	5,295
NE	720	2,230	4,575
NM	10	108	175
OK	27	360	832
SD	128	195	390
TX	138	2,880	6,030
WA	16	247	587
Oth Sts	300	415	692
US	2,110	11,565	23,401

<sup>1</sup> Number of feedlots is the number of lots operating at anytime during the year. Inventory is the number on hand January 1 of the following year. The United States totals show the actual number of feedlots, inventory, and number of animals marketed in each size group. The sum of the numbers shown by State under a specified size group may or may not add to the United States total for that size group since for some States size groups are combined to avoid disclosing individual operations.

<sup>2</sup> Lots, inventory, and marketings from other size groups are included to avoid disclosing individual operations.

**Cattle on Feed: Feedlot Capacity, 1000+ Capacity Feedlots,  
United States, January 1, 2000-2002 <sup>1</sup>**

Item	Feedlot Capacity in Number of Head		
	2000	2001	2002
	<i>1,000 Head</i>	<i>1,000 Head</i>	<i>1,000 Head</i>
US	16,500	16,500	16,500

<sup>1</sup> Total capacity of all 1000+ capacity feedlots in the U.S.

**Cattle on Feed: Number of Feedlots, Inventory, and Marketings,  
by Size of Feedlot, Region, and United States 2000-2001 <sup>1</sup>**

Year and State	Feedlot Capacity in Number of Head					
	16,000 - 23,999			24,000 - 31,999		
	Lots	Inventory	Cattle Marketed	Lots	Inventory	Cattle Marketed
	<i>Number</i>	<i>1,000 Head</i>	<i>1,000 Head</i>	<i>Number</i>	<i>1,000 Head</i>	<i>1,000 Head</i>
2000						
AZ,CA,TX	20	283	554	20	418	771
CO,KS,NE	52	800	1,745	33	745	1,765
Oth Sts	10	145	349	7	145	284
US	82	1,228	2,648	60	1,308	2,820
2001						
AZ,CA,TX	22	276	530	21	440	790
CO,KS,NE	51	725	1,550	31	735	1,650
Oth Sts	8	113	251	8	133	308
US	81	1,114	2,331	60	1,308	2,748

See footnote(s) at end of table.

--continued

**Cattle on Feed: Number of Feedlots, Inventory, and Marketings, by  
Size of Feedlot, Region, and United States 2000-2001 <sup>1</sup> (continued)**

Year and State	Feedlot Capacity in Number of Head					
	32,000 - 49,999			50,000 and Over		
	Lots	Inventory	Cattle Marketed	Lots	Inventory	Cattle Marketed
	<i>Number</i>	<i>1,000 Head</i>	<i>1,000 Head</i>	<i>Number</i>	<i>1,000 Head</i>	<i>1,000 Head</i>
2000						
AZ,CA,TX	32	1,047	2,023	26	1,584	3,122
CO,KS,NE	28	860	1,910	17	1,130	2,585
Oth Sts	4	154	362	9	531	1,178
US	64	2,061	4,295	52	3,245	6,885
2001						
AZ,CA,TX	34	1,144	2,158	24	1,523	2,900
CO,KS,NE	28	970	2,000	18	1,150	2,645
Oth Sts	5	161	349	9	502	1,230
US	67	2,275	4,507	51	3,175	6,775

<sup>1</sup> Number of feedlots is the number of lots operating at anytime during the year. Inventory is the number on hand January 1 of the following year.

**Cattle on Feed: Number of Feedlots, Inventory, and Marketings,  
Feedlots With Less Than 1,000 Head Capacity,  
by State, and United States 2000-2001 <sup>1</sup>**

Year and State	Lots		Inventory		Cattle Marketed	
	<i>Number</i>		<i>1,000 Head</i>		<i>1,000 Head</i>	
2000						
IL		6,000		159		280
IN		5,900		102		190
IA		11,500		665		980
MI		4,000		149		200
MN		7,300		205		320
MO		3,500		51		125
NE		4,505		150		300
ND		1,500		45		85
OH		7,200		183		310
PA		5,100		69		110
SD		3,300		163		240
WI		7,100		148		260
Oth Sts		28,095		*314.4		600
US		95,000		*2,403.4		4,000
2001						
IL		5,600		150		240
IN		5,800		107		180
IA		11,000		600		790
MI		3,900		144		180
MN		7,000		188		310
MO		3,100		53		80
NE		4,380		140		300
ND		1,400		47		70
OH		7,200		171		280
PA		4,900		68		100
SD		3,200		160		230
WI		6,900		152		240
Oth Sts		27,620		315.3		500
US		92,000		2,295.3		3,500

\* Revised.

<sup>1</sup> Number of feedlots is the number of lots operating at the end of the year. Inventory is the number on hand January 1 of the following year.

**Cattle on Feed: Number of Feedlots, Inventory, and Marketings,  
by Size of Feedlot, United States 2000-2001 <sup>1</sup>**

Feedlot Capacity	2000			2001		
	Lots	Inventory	Cattle Marketed	Lots	Inventory	Cattle Marketed
	<i>No.</i>	<i>1,000 Head</i>	<i>1,000 Head</i>	<i>No.</i>	<i>1,000 Head</i>	<i>1,000 Head</i>
Less than 1,000 head	95,000	2,403.4	4,000	92,000	2,295.3	3,500
1,000 head or more	2,091	11,798	24,130	2,110	11,565	23,401
All Feedlots	97,091	14,201.4	28,130	94,110	13,860.3	26,901

<sup>1</sup> Number of feedlots with capacity less than 1,000 head is the number of lots operating at the end of the year. Number of feedlots with capacity 1,000 head or more is the number of lots operating at anytime during the year. Inventory is the number on hand January 1 of the following year.

## Terms and Definitions of Cattle on Feed Estimates

**Cattle on feed** are animals being fed a ration of grain, silage, hay and/or protein supplement for slaughter market that are expected to produce a carcass that will grade select or better. It excludes cattle being "backgrounded only" for later sale as feeders or later placement in another feedlot.

**Placements** are cattle put into a feedlot, fed a ration which will produce a carcass that will grade select or better, and are intended for the slaughter market.

**Marketings** are cattle shipped out of feedlots to a slaughter market.

**Other disappearance** includes death loss, movement from feedlots to pasture, and shipments to other feedlots for further feeding.

## Reliability of Cattle on Feed Estimates

**Survey Procedures:** During January and July all known feedlots in the U.S. with capacity of 1,000 or more head are surveyed to provide data for cattle on feed estimates. During the other months, all known feedlots from 17 States are surveyed. The 17 States account for 98 percent of the cattle on feed.

**Estimating Procedures:** These cattle on feed estimates were prepared by the Agricultural Statistics Board after reviewing recommendations and analysis submitted by each State office. Regional and State survey data were reviewed for reasonableness with each other and with estimates from the previous month when setting the current estimates.

**Revision Policy:** Revisions to previous estimates are made to improve month to month relationships. Estimates for the previous month are subject to revision in all States each month when current estimates are made. In February, all monthly estimates for the previous year, and the number of feedlots and annual marketings from two years ago are reviewed and subject to revisions. The reviews are primarily based on slaughter data, state check-off or brand data, and any other data that may have been received after the original estimate was made. Estimates will also be reviewed after data from the Census of Agriculture are available. No revisions will be made after that date and estimates become final.

**Reliability:** Since all 1000+ capacity cattle on feed operators in every State are not included in the monthly survey, survey estimates are subject to sampling variability. Survey results are also subject to non-sampling errors such as omissions, duplications, and mistakes in reporting, recording, and processing the data. The effects of these errors cannot be measured directly. They are minimized through rigid quality controls in the data collection process and through a careful review of all reported data for consistency and reasonableness.

## Index

**Page**

Cattle on Feed, 1,000+ Capacity Feedlots, 7 State Summary .....	3
Cattle on Feed, 1,000+ Capacity Feedlots, State and U.S., January 1, 2002 and February 1, 2001-2002 .....	4
Cattle on Feed, 1,000+ Capacity Feedlots, State and U.S., January 2001 - December 2001 .....	7
Cattle on Feed, 1,000+ Capacity Feedlots, United States Summary .....	2
Cattle on Feed, Feedlot Capacity, 1,000+ Capacity Feedlots, United States, January 1, 2000-2002 .....	19
Cattle on Feed, Number by Class, 1,000+ Capacity Feedlots, State and U.S., January 2001-October 2001 .....	15
Marketings, 1,000+ Capacity Feedlots, State and U.S., December 2000 and January 2001-November 2001 .....	13
Marketings, 1,000+ Capacity Feedlots, State and U.S., December 2001 and January 2001-2002 .....	6
Number of Feedlots, Inventory, and Marketings by Size of Feedlot, Region and U.S., 2000-2001 .....	20
Number of Feedlots, Inventory, and Marketings by Size of Feedlot, State and U.S., 2000-2001 .....	16
Number of Feedlots, Inventory, and Marketings by Size of Feedlot, U.S., 2000-2001 .....	22
Number of Feedlots with less than 1000 Head Capacity, Inventory, and Marketings, State and U.S., 2000-2001 .....	22
Other Disappearance, 1,000+ Capacity Feedlots, State and U.S., December 2000 and January 2001-November 2001 .....	14
Other Disappearance, 1,000+ Capacity Feedlots, State and U.S., December 2001 and January 2001-2002 .....	6
Placements, 1000+ Capacity Feedlots, State and U.S., December 2000 and January 2001-November 2001 .....	8
Placements, 1000+ Capacity Feedlots, State and U.S., December 2001 and January 2001-2002 .....	5
Placements by Weight Group, 1,000+ Capacity Feedlots, State and U.S., December 2000 and January 2001-November 2001 .....	9
Placements by Weight Group, 1,000+ Capacity Feedlots, State and U.S., December 2000-2001 and January 2001-2002 .....	5
Reliability of Cattle on Feed Estimates .....	23
Terms and Definitions of Cattle on Feed Estimates .....	23



The next "Cattle on Feed" report will be released at 3 p.m. ET on March 15, 2002.

The United States Department of Agriculture (USDA) prohibits discrimination in all its programs on the basis of race, color, national origin, gender, religion, age, disability, political beliefs, sexual orientation, and marital or family status. (Not all prohibited bases apply to all programs.) Persons with disabilities who require alternative means for communication of program information (braille, large print, audiotape, etc.) should contact the USDA's TARGET Center at 202-720-2600 (voice and TDD).

To file a complaint of discrimination, write USDA, Director, Office of Civil Rights, Room 326-W, Whitten Building, 1400 Independence Avenue, SW, Washington, D.C., 20250-9410, or call 202-720-5964 (voice or TDD). USDA is an equal opportunity provider and employer.

## **ACCESS TO REPORTS!!**

---

For your convenience, there are several ways to obtain NASS reports, data products, and services:

### **INTERNET ACCESS**

All NASS reports are available free of charge on the worldwide Internet. For access, connect to the Internet and go to the NASS Home Page at: <http://www.usda.gov/nass/>. Select "Today's Reports" or Publications and then Reports by Calendar or Publications and then Search, by Title or Subject.

### **E-MAIL SUBSCRIPTION**

There are two options for subscribing via e-mail. All NASS reports are available by subscription free of charge direct to your e-mail address. 1) Starting with the NASS Home Page at <http://www.usda.gov/nass/>, click on **Publications**, then click on the **Subscribe by E-mail** button which takes you to the page describing e-mail delivery of reports. Finally, click on **Go to the Subscription Page** and follow the instructions. 2) If you do NOT have Internet access, send an e-mail message to: [usda-reports@usda.mannlib.cornell.edu](mailto:usda-reports@usda.mannlib.cornell.edu). In the body of the message type the word: **list**.

### **AUTOFAX ACCESS**

NASSFax service is available for some reports from your fax machine. Please call 202-720-2000, using the handset attached to your fax. Respond to the voice prompts. Document 0411 is a list of available reports.

-----

### **PRINTED REPORTS OR DATA PRODUCTS**

**CALL OUR TOLL-FREE ORDER DESK: 800-999-6779 (U.S. and Canada)**  
**Other areas, please call 703-605-6220      FAX: 703-605-6900**  
**(Visa, MasterCard, check, or money order acceptable for payment.)**

-----

### **ASSISTANCE**

For **assistance** with general agricultural statistics or further information about NASS or its products or services, contact the **Agricultural Statistics Hotline** at **800-727-9540**, 7:30 a.m. to 4:00 p.m. ET, or e-mail: [nass@nass.usda.gov](mailto:nass@nass.usda.gov).

---

# Sharpen Your Strategy at USDA's 78th Outlook Forum

---

## Agricultural Outlook Forum 2002



---

**February 21-22, 2002  
Crystal Gateway  
Marriott Hotel  
Arlington, Virginia**

**New Farm Legislation  
Biotech Crops in World Trade  
Protecting Livestock and Crops  
Tracking Crop and Product  
Identity in the Food Chain  
2002 Commodity Prospects  
Competing in Global Markets  
Climate and Agriculture**

**P**ut next year's economic and business outlook in focus at Outlook Forum 2002.

Attend this popular event to hear the latest on market-shaping developments ranging from farm legislation to food safety concerns. Government officials, business leaders and commodity analysts will assess the outlook for 2002 and beyond, and noted economist Larry Chimerine will discuss U.S. and global economic prospects.

Focus sessions featuring rural innovators will highlight trends in bio-energy, contract negotiation, rural development and other areas. To stretch your planning horizon, USDA will release new 10-year commodity projections.

Visit the Forum home page for complete program details and online registration.

**Register Today! [www.usda.gov/oce](http://www.usda.gov/oce) (202) 314-3451**