



Cattle on Feed

Released March 15, 2002, by the National Agricultural Statistics Service (NASS), Agricultural Statistics Board, U.S. Department of Agriculture. For information on "Cattle on Feed" call Steve Anderson at (202) 720-3040, office hours 7:30 a.m. to 4:00 p.m. ET.

U.S. Cattle on Feed Down 2 Percent

Cattle and calves on feed for slaughter market in the United States for feedlots with capacity of 1,000 or more head totaled 11.52 million head on March 1, 2002. The inventory was down 2 percent from the 11.70 million head on March 1, 2001 but 2 percent above March 1, 2000.

Placements in feedlots during February totaled 1.81 million, 14 percent above 2001 but 4 percent below 2000. Net placements were 1.74 million. During February, placements of cattle and calves weighing less than 600 pounds were 260,000, 600-699 pounds were 410,000, 700-799 pounds were 662,000, and 800 pounds and greater were 473,000.

Marketings of fed cattle during February totaled 1.80 million, 3 percent above 2001 but 12 percent below 2000.

Other disappearance totaled 63,000 during February, 22 percent below 2001 and 19 percent below 2000.

Cattle on Feed in Historic 7 States Down 1 Percent

Cattle on feed March 1, 2002, in the historic 7 States for feedlots with capacity of 1,000 or more head totaled 9.91 million, down 1 percent from the previous year but 2 percent above March 1, 2000.

Placements in feedlots during February totaled 1.54 million, 16 percent above 2001 but 4 percent below 2000.

Marketings during February totaled 1.53 million, 4 percent above 2001 but 12 percent below 2000.

Other disappearance during February was 52,000 head, 19 percent below 2001 but 11 percent above 2000.

**Cattle on Feed: Number on Feed, Placements, Marketings, and
Other Disappearance, 1,000+ Capacity Feedlots,
United States, March 1, 2000-2002**

Item	Number			2002 as % of	
	2000	2001	2002	2000	2001
	<i>1,000 Head</i>	<i>1,000 Head</i>	<i>1,000 Head</i>	<i>Percent</i>	<i>Percent</i>
On Feed Feb 1 ¹	11,574	11,941	*11,572	100	97
Placed on Feed During Feb	1,880	1,580	1,805	96	114
Fed Cattle Marketed During Feb	2,046	1,745	1,796	88	103
Other Disappearance During Feb ²	78	81	63	81	78
On Feed Mar 1 ¹	11,330	11,695	11,518	102	98

* Revised.

¹ Cattle and calves on feed are animals for slaughter market being fed a ration of grain or other concentrates and are expected to produce a carcass that will grade select or better.

² Includes death loss, movement from feedlots to pasture, and shipments to other feedlots for further feeding.

**Cattle on Feed: Number on Feed, Placements, Marketings, and
Other Disappearance, 1,000+ Capacity Feedlots,
United States, February 1, 2000-2002**

Item	Number			2002 as % of	
	2000	2001	2002	2000	2001
	<i>1,000 Head</i>	<i>1,000 Head</i>	<i>1,000 Head</i>	<i>Percent</i>	<i>Percent</i>
On Feed Jan 1 ¹	11,475	11,798	11,565	101	98
Placed on Feed During Jan	2,216	2,263	*2,179	98	96
Fed Cattle Marketed During Jan	2,048	2,042	2,083	102	102
Other Disappearance During Jan ²	69	78	89	129	114
On Feed Feb 1 ¹	11,574	11,941	*11,572	100	97

* Revised.

¹ Cattle and calves on feed are animals for slaughter market being fed a ration of grain or other concentrates and are expected to produce a carcass that will grade select or better.

² Includes death loss, movement from feedlots to pasture, and shipments to other feedlots for further feeding.

**Cattle on Feed: Number on Feed, Placements, Marketings, and
Other Disappearance, 1,000+ Capacity Feedlots,
7 States, March 1, 2000-2002¹**

Item	Number			2002 as % of	
	2000	2001	2002	2000	2001
	<i>1,000 Head</i>	<i>1,000 Head</i>	<i>1,000 Head</i>	<i>Percent</i>	<i>Percent</i>
On Feed Feb 1 ²	9,885	10,222	*9,951	101	97
Placed on Feed During Feb	1,606	1,331	1,538	96	116
Fed Cattle Marketed During Feb	1,749	1,477	1,532	88	104
Other Disappearance During Feb ³	47	64	52	111	81
On Feed Mar 1 ²	9,695	10,012	9,905	102	99

* Revised.

¹ The 7 States include AZ, CA, CO, IA, KS, NE, and TX.

² Cattle and calves on feed are animals for slaughter market being fed a ration of grain or other concentrates and are expected to produce a carcass that will grade select or better.

³ Includes death loss, movement from feedlots to pasture, and shipments to other feedlots for further feeding.

**Cattle on Feed: Number on Feed, Placements, Marketings, and
Other Disappearance, 1,000+ Capacity Feedlots,
7 States, February 1, 2000-2002¹**

Item	Number			2002 as % of	
	2000	2001	2002	2000	2001
	<i>1,000 Head</i>	<i>1,000 Head</i>	<i>1,000 Head</i>	<i>Percent</i>	<i>Percent</i>
On Feed Jan 1 ²	9,752	10,076	9,910	102	98
Placed on Feed During Jan	1,931	1,965	*1,907	99	97
Fed Cattle Marketed During Jan	1,747	1,751	1,792	103	102
Other Disappearance During Jan ³	51	68	74	145	109
On Feed Feb 1 ²	9,885	10,222	*9,951	101	97

* Revised.

¹ The 7 States include AZ, CA, CO, IA, KS, NE, and TX.

² Cattle and calves on feed are animals for slaughter market being fed a ration of grain or other concentrates and are expected to produce a carcass that will grade select or better.

³ Includes death loss, movement from feedlots to pasture, and shipments to other feedlots for further feeding.

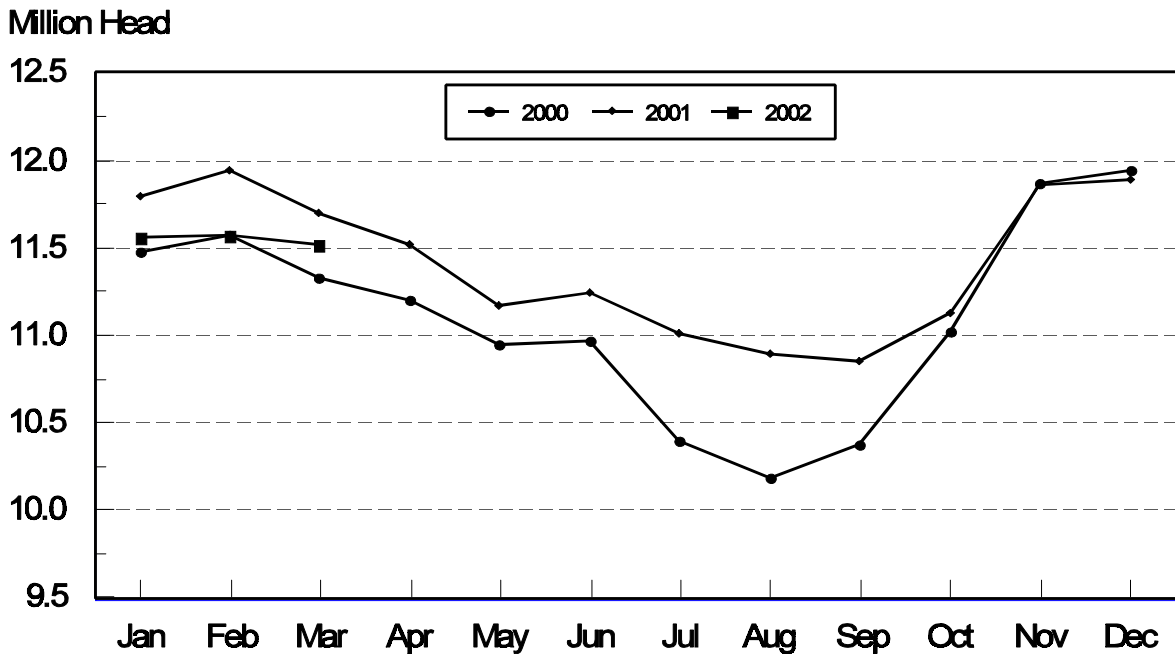
**Cattle on Feed: Number on Feed, 1,000+ Capacity Feedlots,
by Month, State, and United States 2001-2002 ¹**

State	Mar 1, 2001	Feb 1, 2002	Mar 1, 2002		
			Number	as % of 2001	as % of Feb
	<i>1,000 Head</i>	<i>1,000 Head</i>	<i>1,000 Head</i>	<i>Percent</i>	<i>Percent</i>
AZ	307	311	310	101	100
CA	440	475	475	108	100
CO	1,190	1,180	1,150	97	97
ID	320	320	315	98	98
IA	385	*395	400	104	101
KS	2,470	2,450	2,420	98	99
NE	2,380	2,290	2,300	97	100
NM	111	*109	109	98	100
OK	390	*350	345	88	99
SD	207	200	210	101	105
TX	2,840	2,850	2,850	100	100
WA	245	237	229	93	97
Oth Sts	410	405	405	99	100
US	11,695	*11,572	11,518	98	100

* Revised.

¹ Cattle and calves on feed are animals for slaughter market being fed a ration of grain or other concentrates and are expected to produce a carcass that will grade select or better.

**United States Cattle on Feed
1,000+ Capacity Feedlots**



**Cattle on Feed: Number Placed on Feed, 1,000+ Capacity Feedlots,
by Month, State, and United States 2001-2002**

State	During Feb 2001	During Jan 2002	During Feb 2002		
			Number	as % of 2001	as % of Jan
	<i>1,000 Head</i>	<i>1,000 Head</i>	<i>1,000 Head</i>	<i>Percent</i>	<i>Percent</i>
AZ	41	32	26	63	81
CA	55	59	55	100	93
CO	195	225	185	95	82
ID	59	57	58	98	102
IA	45	*91	57	127	63
KS	335	530	435	130	82
NE	310	490	370	119	76
NM	5	*11	12	240	109
OK	42	*67	55	131	82
SD	35	46	45	129	98
TX	350	480	410	117	85
WA	52	41	43	83	105
Oth Sts	56	50	54	96	108
US	1,580	*2,179	1,805	114	83

* Revised.

**Cattle on Feed: Number Placed on Feed by Weight Group, 1,000+ Capacity
Feedlots, by Month, State, and United States, 2001-2002**

State	During February									
	Under 600		600-699		700-799		800 Plus		Total	
	2001	2002	2001	2002	2001	2002	2001	2002	2001	2002
	<i>1,000 Head</i>	<i>1,000 Head</i>	<i>1,000 Head</i>	<i>1,000 Head</i>	<i>1,000 Head</i>	<i>1,000 Head</i>	<i>1,000 Head</i>	<i>1,000 Head</i>	<i>1,000 Head</i>	<i>1,000 Head</i>
CO	36	20	40	54	74	70	45	41	195	185
KS	50	40	110	105	120	170	55	120	335	435
NE	25	30	82	86	118	137	85	117	310	370
TX	105	80	100	95	110	165	35	70	350	410
Oth Sts	120	90	70	70	95	120	105	125	390	405
US	336	260	402	410	517	662	325	473	1,580	1,805
	During January									
	Under 600		600-699		700-799		800 Plus		Total	
	2001	2002	2001	2002	2001	2002	2001	2002	2001	2002
	<i>1,000 Head</i>	<i>1,000 Head</i>	<i>1,000 Head</i>	<i>1,000 Head</i>	<i>1,000 Head</i>	<i>1,000 Head</i>	<i>1,000 Head</i>	<i>1,000 Head</i>	<i>1,000 Head</i>	<i>1,000 Head</i>
CO	45	30	91	74	120	84	49	37	305	225
KS	140	55	200	170	165	205	75	100	580	530
NE	39	61	170	139	156	170	115	120	480	490
TX	150	105	145	140	125	165	40	70	460	480
Oth Sts	125	130	110	*95	98	*114	105	*115	438	*454
US	499	381	716	*618	664	*738	384	*442	2,263	*2,179

* Revised.

**Cattle on Feed: Number Marketed, 1,000+ Capacity Feedlots,
by Month, State, and United States 2001-2002**

State	During Feb 2001	During Jan 2002	During Feb 2002		
			Number	as % of 2001	as % of Jan
	<i>1,000 Head</i>	<i>1,000 Head</i>	<i>1,000 Head</i>	<i>Percent</i>	<i>Percent</i>
AZ	28	25	26	93	104
CA	50	57	50	100	88
CO	225	215	205	91	95
ID	62	65	61	98	94
IA	44	50	51	116	102
KS	350	540	450	129	83
NE	350	405	350	100	86
NM	10	9	11	110	122
OK	58	74	59	102	80
SD	29	38	34	117	89
TX	430	500	400	93	80
WA	47	50	50	106	100
Oth Sts	62	55	49	79	89
US	1,745	2,083	1,796	103	86

**Cattle on Feed: Other Disappearance, 1,000+ Capacity Feedlots,
by Month, State, and United States 2001-2002 ¹**

State	During Feb 2001	During Jan 2002	During Feb 2002		
			Number	as % of 2001	as % of Jan
	<i>1,000 Head</i>	<i>1,000 Head</i>	<i>1,000 Head</i>	<i>Percent</i>	<i>Percent</i>
AZ	8	1	1	13	100
CA	10	7	5	50	71
CO	10	10	10	100	100
ID	2	2	2	100	100
IA	1	1	1	100	100
KS	15	20	15	100	75
NE	10	25	10	100	40
NM	0	1	1		100
OK	4	3	1	25	33
SD	4	3	1	25	33
TX	10	10	10	100	100
WA	3	1	1	33	100
Oth Sts	4	5	5	125	100
US	81	89	63	78	71

¹ Includes death loss, movement from feedlots to pasture, and shipments to other feedlots for further feeding.

Terms and Definitions of Cattle on Feed Estimates

Cattle on feed are animals being fed a ration of grain, silage, hay and/or protein supplement for slaughter market that are expected to produce a carcass that will grade select or better. It excludes cattle being "backgrounded only" for later sale as feeders or later placement in another feedlot.

Placements are cattle put into a feedlot, fed a ration which will produce a carcass that will grade select or better, and are intended for the slaughter market.

Marketings are cattle shipped out of feedlots to a slaughter market.

Other disappearance includes death loss, movement from feedlots to pasture, and shipments to other feedlots for further feeding.

Reliability of Cattle on Feed Estimates

Survey Procedures: During January and July all known feedlots in the U.S. with capacity of 1,000 or more head are surveyed to provide data for cattle on feed estimates. During the other months, all known feedlots from 17 States are surveyed. The 17 States account for 98 percent of the cattle on feed.

Estimating Procedures: These cattle on feed estimates were prepared by the Agricultural Statistics Board after reviewing recommendations and analysis submitted by each State office. Regional and State survey data were reviewed for reasonableness with each other and with estimates from the previous month when setting the current estimates.

Revision Policy: Revisions to previous estimates are made to improve month to month relationships. Estimates for the previous month are subject to revision in all States each month when current estimates are made. In February, all monthly estimates for the previous year, and the number of feedlots and annual marketings from two years ago are reviewed and subject to revisions. The reviews are primarily based on slaughter data, state check-off or brand data, and any other data that may have been received after the original estimate was made. Estimates will also be reviewed after data from the Census of Agriculture are available. No revisions will be made after that date and estimates become final.

Reliability: Since all 1000+ capacity cattle on feed operators in every State are not included in the monthly survey, survey estimates are subject to sampling variability. Survey results are also subject to non-sampling errors such as omissions, duplications, and mistakes in reporting, recording, and processing the data. The effects of these errors cannot be measured directly. They are minimized through rigid quality controls in the data collection process and through a careful review of all reported data for consistency and reasonableness.

The next "Cattle on Feed" report will be released at 3 p.m. ET on April 19, 2002.

The United States Department of Agriculture (USDA) prohibits discrimination in all its programs on the basis of race, color, national origin, gender, religion, age, disability, political beliefs, sexual orientation, and marital or family status. (Not all prohibited bases apply to all programs.) Persons with disabilities who require alternative means for communication of program information (braille, large print, audiotape, etc.) should contact the USDA's TARGET Center at 202-720-2600 (voice and TDD).

To file a complaint of discrimination, write USDA, Director, Office of Civil Rights, Room 326-W, Whitten Building, 1400 Independence Avenue, SW, Washington, D.C., 20250-9410, or call 202-720-5964 (voice or TDD). USDA is an equal opportunity provider and employer.

ACCESS TO REPORTS!!

For your convenience, there are several ways to obtain NASS reports, data products, and services:

INTERNET ACCESS

All NASS reports are available free of charge on the worldwide Internet. For access, connect to the Internet and go to the NASS Home Page at: <http://www.usda.gov/nass/>. Select "Today's Reports" or Publications and then Reports by Calendar or Publications and then Search, by Title or Subject.

E-MAIL SUBSCRIPTION

There are two options for subscribing via e-mail. All NASS reports are available by subscription free of charge direct to your e-mail address. 1) Starting with the NASS Home Page at <http://www.usda.gov/nass/>, click on **Publications**, then click on the **Subscribe by E-mail** button which takes you to the page describing e-mail delivery of reports. Finally, click on **Go to the Subscription Page** and follow the instructions. 2) If you do NOT have Internet access, send an e-mail message to: usda-reports@usda.mannlib.cornell.edu. In the body of the message type the word: **list**.

AUTOFAX ACCESS

NASSFax service is available for some reports from your fax machine. Please call 202-720-2000, using the handset attached to your fax. Respond to the voice prompts. Document 0411 is a list of available reports.

PRINTED REPORTS OR DATA PRODUCTS

CALL OUR TOLL-FREE ORDER DESK: 800-999-6779 (U.S. and Canada)
Other areas, please call 703-605-6220 FAX: 703-605-6900
(Visa, MasterCard, check, or money order acceptable for payment.)

ASSISTANCE

For **assistance** with general agricultural statistics or further information about NASS or its products or services, contact the **Agricultural Statistics Hotline** at **800-727-9540**, 7:30 a.m. to 4:00 p.m. ET, or e-mail: nass@nass.usda.gov.
