



# Cattle on Feed

---

Released April 19, 2002, by the National Agricultural Statistics Service (NASS), Agricultural Statistics Board, U.S. Department of Agriculture. For information on "Cattle on Feed" call Steve Anderson at (202) 720-3040, office hours 7:30 a.m. to 4:00 p.m. ET.

## U.S. Cattle on Feed Up Slightly

**Cattle and calves on feed** for slaughter market in the United States for feedlots with capacity of 1,000 or more head totaled 11.58 million head on April 1, 2002. The inventory was almost one-half percent above April 1, 2001 and 3 percent above April 1, 2000. The inventory included 7.23 million steers and steer calves, up 4 percent from the previous year. This group accounted for 62 percent of the total inventory. Heifers and heifer calves accounted for 4.30 million head, down 4 percent from 2001.

**Placements** in feedlots during March totaled 1.95 million, 6 percent above 2001 but 4 percent below 2000. Net placements were 1.88 million. During March, placements of cattle and calves weighing less than 600 pounds were 314,000, 600-699 pounds were 372,000, 700-799 pounds were 702,000, and 800 pounds and greater were 565,000.

**Marketings** of fed cattle during March totaled 1.83 million, 5 percent below 2001 and 11 percent below 2000.

**Other disappearance** totaled 69,000 during March, 30 percent below 2001 and 33 percent below 2000.

## Cattle on Feed in Historic 7 States Up 1 Percent

**Cattle on feed** April 1, 2002, in the historic 7 States for feedlots with capacity of 1,000 or more head totaled 9.93 million, up 1 percent from the previous year and 4 percent above April 1, 2000. The inventory included 6.18 million steers and steer calves, up 5 percent from the previous year. This group accounted for 62 percent of the total inventory. Heifers and heifer calves accounted for 3.72 million head, down 5 percent from 2001.

**Placements** in feedlots during March totaled 1.65 million, 8 percent above 2001 but 5 percent below 2000.

**Marketings** during March totaled 1.57 million, 2 percent below 2001 and 11 percent below 2000.

**Other disappearance** during March was 60,000 head, 25 percent below 2001 and 19 percent below 2000.

**Cattle on Feed: Number on Feed, Placements, Marketings, and  
Other Disappearance, 1,000+ Capacity Feedlots,  
United States, April 1, 2000-2002**

Item	Number			2002 as % of	
	2000	2001	2002	2000	2001
	<i>1,000 Head</i>	<i>1,000 Head</i>	<i>1,000 Head</i>	<i>Percent</i>	<i>Percent</i>
On Feed Mar 1 <sup>1</sup>	11,330	11,695	11,518	102	98
Placed on Feed During Mar	2,031	1,842	1,953	96	106
Fed Cattle Marketed During Mar	2,056	1,916	1,825	89	95
Other Disappearance During Mar <sup>2</sup>	103	98	69	67	70
On Feed Apr 1 <sup>1</sup>	11,202	11,523	11,577	103	100

<sup>1</sup> Cattle and calves on feed are animals for slaughter market being fed a ration of grain or other concentrates and are expected to produce a carcass that will grade select or better.

<sup>2</sup> Includes death loss, movement from feedlots to pasture, and shipments to other feedlots for further feeding.

**Cattle on Feed: Number on Feed, Placements, Marketings, and  
Other Disappearance, 1,000+ Capacity Feedlots,  
United States, March 1, 2000-2002**

Item	Number			2002 as % of	
	2000	2001	2002	2000	2001
	<i>1,000 Head</i>	<i>1,000 Head</i>	<i>1,000 Head</i>	<i>Percent</i>	<i>Percent</i>
On Feed Feb 1 <sup>1</sup>	11,574	11,941	11,572	100	97
Placed on Feed During Feb	1,880	1,580	*1,810	96	115
Fed Cattle Marketed During Feb	2,046	1,745	*1,801	88	103
Other Disappearance During Feb <sup>2</sup>	78	81	63	81	78
On Feed Mar 1 <sup>1</sup>	11,330	11,695	11,518	102	98

\* Revised.

<sup>1</sup> Cattle and calves on feed are animals for slaughter market being fed a ration of grain or other concentrates and are expected to produce a carcass that will grade select or better.

<sup>2</sup> Includes death loss, movement from feedlots to pasture, and shipments to other feedlots for further feeding.

**Cattle on Feed: Number on Feed by Class, 1,000+ Capacity Feedlots,  
United States, April 1, 2000-2002**

Item	Number			2002 as % of	
	2000	2001	2002	2000	2001
	<i>1,000 Head</i>	<i>1,000 Head</i>	<i>1,000 Head</i>	<i>Percent</i>	<i>Percent</i>
Class on Feed Apr 1					
Steers and Steer Calves	6,788	6,957	7,231	107	104
Heifers and Heifer Calves	4,357	4,486	4,303	99	96
Cows and Bulls	57	80	43	75	54

**Cattle on Feed: Number on Feed, Placements, Marketings, and  
Other Disappearance, 1,000+ Capacity Feedlots,  
7 States, April 1, 2000-2002<sup>1</sup>**

Item	Number			2002 as % of	
	2000	2001	2002	2000	2001
	<i>1,000 Head</i>	<i>1,000 Head</i>	<i>1,000 Head</i>	<i>Percent</i>	<i>Percent</i>
On Feed Mar 1 <sup>2</sup>	9,695	10,012	9,905	102	99
Placed on Feed During Mar	1,736	1,530	1,654	95	108
Fed Cattle Marketed During Mar	1,764	1,603	1,565	89	98
Other Disappearance During Mar <sup>3</sup>	74	80	60	81	75
On Feed Apr 1 <sup>2</sup>	9,593	9,859	9,934	104	101

<sup>1</sup> The 7 States include AZ, CA, CO, IA, KS, NE, and TX.

<sup>2</sup> Cattle and calves on feed are animals for slaughter market being fed a ration of grain or other concentrates and are expected to produce a carcass that will grade select or better.

<sup>3</sup> Includes death loss, movement from feedlots to pasture, and shipments to other feedlots for further feeding.

**Cattle on Feed: Number on Feed, Placements, Marketings, and  
Other Disappearance, 1,000+ Capacity Feedlots,  
7 States, March 1, 2000-2002<sup>1</sup>**

Item	Number			2002 as % of	
	2000	2001	2002	2000	2001
	<i>1,000 Head</i>	<i>1,000 Head</i>	<i>1,000 Head</i>	<i>Percent</i>	<i>Percent</i>
On Feed Feb 1 <sup>2</sup>	9,885	10,222	9,951	101	97
Placed on Feed During Feb	1,606	1,331	*1,543	96	116
Fed Cattle Marketed During Feb	1,749	1,477	*1,537	88	104
Other Disappearance During Feb <sup>3</sup>	47	64	52	111	81
On Feed Mar 1 <sup>2</sup>	9,695	10,012	9,905	102	99

\* Revised.

<sup>1</sup> The 7 States include AZ, CA, CO, IA, KS, NE, and TX.

<sup>2</sup> Cattle and calves on feed are animals for slaughter market being fed a ration of grain or other concentrates and are expected to produce a carcass that will grade select or better.

<sup>3</sup> Includes death loss, movement from feedlots to pasture, and shipments to other feedlots for further feeding.

**Cattle on Feed: Number on Feed by Class, 1,000+ Capacity Feedlots,  
7 States, April 1, 2000-2002<sup>1</sup>**

Item	Number			2002 as % of	
	2000	2001	2002	2000	2001
	<i>1,000 Head</i>	<i>1,000 Head</i>	<i>1,000 Head</i>	<i>Percent</i>	<i>Percent</i>
Class on Feed Apr 1					
Steers and Steer Calves	5,746	5,885	6,180	108	105
Heifers and Heifer Calves	3,810	3,913	3,718	98	95
Cows and Bulls	37	61	36	97	59

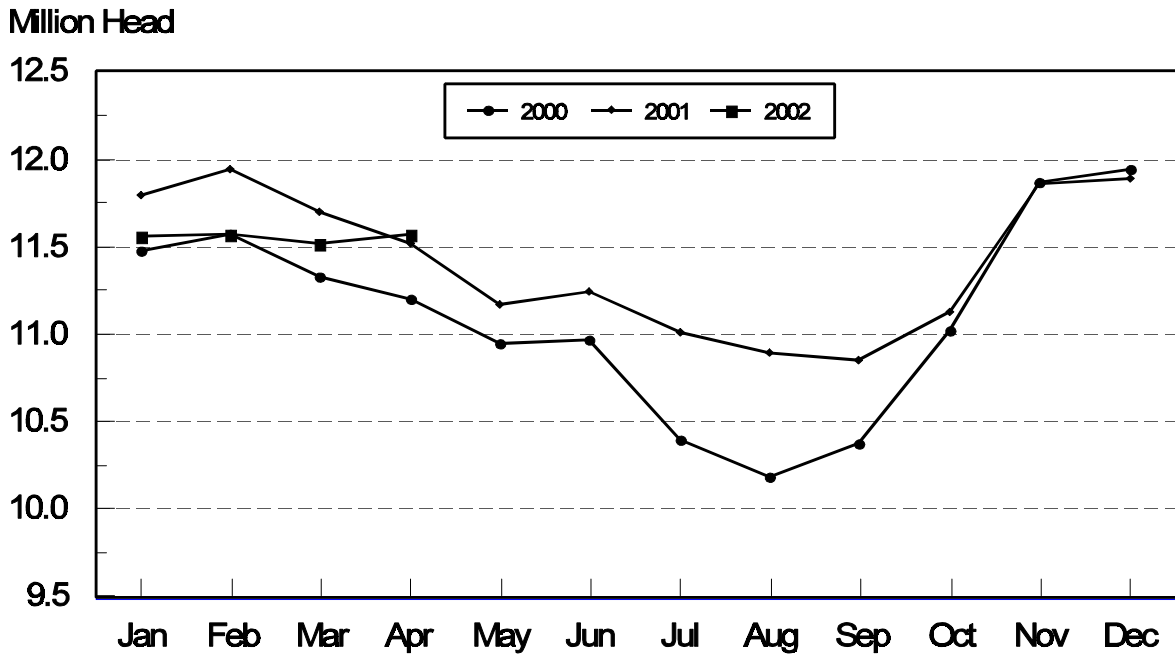
<sup>1</sup> The 7 States include AZ, CA, CO, IA, KS, NE, and TX.

**Cattle on Feed: Number on Feed, 1,000+ Capacity Feedlots,  
by Month, State, and United States 2001-2002 <sup>1</sup>**

State	Apr 1, 2001	Mar 1, 2002	Apr 1, 2002		
			Number	as % of 2001	as % of Mar
	<i>1,000 Head</i>	<i>1,000 Head</i>	<i>1,000 Head</i>	<i>Percent</i>	<i>Percent</i>
AZ	309	310	314	102	101
CA	435	475	485	111	102
CO	1,190	1,150	1,120	94	97
ID	330	315	325	98	103
IA	385	400	395	103	99
KS	2,460	2,420	2,420	98	100
NE	2,350	2,300	2,300	98	100
NM	97	109	113	116	104
OK	370	345	360	97	104
SD	215	210	220	102	105
TX	2,730	2,850	2,900	106	102
WA	257	229	230	89	100
Oth Sts	395	405	395	100	98
US	11,523	11,518	11,577	100	101

<sup>1</sup> Cattle and calves on feed are animals for slaughter market being fed a ration of grain or other concentrates and are expected to produce a carcass that will grade select or better.

**United States Cattle on Feed  
1,000+ Capacity Feedlots**



**Cattle on Feed: Number Placed on Feed, 1,000+ Capacity Feedlots,  
by Month, State, and United States 2001-2002**

State	During Mar 2001	During Feb 2002	During Mar 2002		
			Number	as % of 2001	as % of Feb
	<i>1,000 Head</i>	<i>1,000 Head</i>	<i>1,000 Head</i>	<i>Percent</i>	<i>Percent</i>
AZ	29	26	32	110	123
CA	65	55	68	105	124
CO	220	*190	200	91	105
ID	72	58	70	97	121
IA	46	57	49	107	86
KS	395	435	435	110	100
NE	320	370	310	97	84
NM	10	12	19	190	158
OK	66	55	80	121	145
SD	43	45	44	102	98
TX	455	410	560	123	137
WA	53	43	40	75	93
Oth Sts	68	54	46	68	85
US	1,842	*1,810	1,953	106	108

\* Revised.

**Cattle on Feed: Number Placed on Feed by Weight Group, 1,000+ Capacity  
Feedlots, by Month, State, and United States, 2001-2002**

State	During March									
	Under 600		600-699		700-799		800 Plus		Total	
	2001	2002	2001	2002	2001	2002	2001	2002	2001	2002
	<i>1,000 Head</i>	<i>1,000 Head</i>	<i>1,000 Head</i>	<i>1,000 Head</i>	<i>1,000 Head</i>	<i>1,000 Head</i>	<i>1,000 Head</i>	<i>1,000 Head</i>	<i>1,000 Head</i>	<i>1,000 Head</i>
CO	28	21	38	41	85	72	69	66	220	200
KS	60	45	95	75	150	180	90	135	395	435
NE	31	33	69	63	109	100	111	114	320	310
TX	100	105	145	120	155	225	55	110	455	560
Oth Sts	110	110	67	73	115	125	160	140	452	448
US	329	314	414	372	614	702	485	565	1,842	1,953
	During February									
	Under 600		600-699		700-799		800 Plus		Total	
	2001	2002	2001	2002	2001	2002	2001	2002	2001	2002
	<i>1,000 Head</i>	<i>1,000 Head</i>	<i>1,000 Head</i>	<i>1,000 Head</i>	<i>1,000 Head</i>	<i>1,000 Head</i>	<i>1,000 Head</i>	<i>1,000 Head</i>	<i>1,000 Head</i>	<i>1,000 Head</i>
CO	36	*21	40	*55	74	*72	45	*42	195	*190
KS	50	40	110	105	120	170	55	120	335	435
NE	25	30	82	86	118	137	85	117	310	370
TX	105	80	100	95	110	165	35	70	350	410
Oth Sts	120	90	70	70	95	120	105	125	390	405
US	336	*261	402	*411	517	*664	325	*474	1,580	*1,810

\* Revised.

**Cattle on Feed: Number Marketed, 1,000+ Capacity Feedlots,  
by Month, State, and United States 2001-2002**

State	During Mar 2001	During Feb 2002	During Mar 2002		
			Number	as % of 2001	as % of Feb
	<i>1,000 Head</i>	<i>1,000 Head</i>	<i>1,000 Head</i>	<i>Percent</i>	<i>Percent</i>
AZ	22	26	27	123	104
CA	56	50	55	98	110
CO	210	*210	215	102	102
ID	61	61	59	97	97
IA	45	51	53	118	104
KS	385	450	420	109	93
NE	335	350	300	90	86
NM	20	11	14	70	127
OK	83	59	64	77	108
SD	32	34	33	103	97
TX	550	400	495	90	124
WA	40	50	37	93	74
Oth Sts	77	49	53	69	108
US	1,916	*1,801	1,825	95	101

\* Revised.

**Cattle on Feed: Other Disappearance, 1,000+ Capacity Feedlots,  
by Month, State, and United States 2001-2002 <sup>1</sup>**

State	During Mar 2001	During Feb 2002	During Mar 2002		
			Number	as % of 2001	as % of Feb
	<i>1,000 Head</i>	<i>1,000 Head</i>	<i>1,000 Head</i>	<i>Percent</i>	<i>Percent</i>
AZ	5	1	1	20	100
CA	14	5	3	21	60
CO	10	10	15	150	150
ID	1	2	1	100	50
IA	1	1	1	100	100
KS	20	15	15	75	100
NE	15	10	10	67	100
NM	4	1	1	25	100
OK	3	1	1	33	100
SD	3	1	1	33	100
TX	15	10	15	100	150
WA	1	1	2	200	200
Oth Sts	6	5	3	50	60
US	98	63	69	70	110

<sup>1</sup> Includes death loss, movement from feedlots to pasture, and shipments to other feedlots for further feeding.

**Cattle on Feed: Number on Feed by Class, 1,000+ Capacity Feedlots,  
by Quarter, State, and United States, 2001-2002**

State	Steers & Steer Calves			Heifers & Heifer Calves			Cows and Bulls		
	Apr 1, 2001	Jan 1, 2002	Apr 1, 2002	Apr 1, 2001	Jan 1, 2002	Apr 1, 2002	Apr 1, 2001	Jan 1, 2002	Apr 1, 2002
	<i>1,000 Head</i>	<i>1,000 Head</i>	<i>1,000 Head</i>	<i>1,000 Head</i>	<i>1,000 Head</i>	<i>1,000 Head</i>	<i>1,000 Head</i>	<i>1,000 Head</i>	<i>1,000 Head</i>
AZ	300	302	310	9	3	4	0	0	0
CA	400	440	445	35	40	40	0	0	0
CO	650	675	645	535	500	470	5	5	5
ID	218	216	215	107	107	110	5	7	0
IA	245	230	260	140	124	134	0	1	1
KS	1,400	1,400	1,405	1,055	1,070	1,010	5	10	5
NE	1,330	1,330	1,340	970	855	940	50	45	20
NM	45	50	53	52	58	60	0	0	0
OK	210	210	215	159	150	142	1	0	3
SD	131	99	118	76	88	100	8	8	2
TX	1,560	1,700	1,775	1,169	1,177	1,120	1	3	5
WA	188	151	150	69	96	80	0	0	0
Oth Sts	280	300	300	110	107	93	5	8	2
US	6,957	7,103	7,231	4,486	4,375	4,303	80	87	43

## Terms and Definitions of Cattle on Feed Estimates

**Cattle on feed** are animals being fed a ration of grain, silage, hay and/or protein supplement for slaughter market that are expected to produce a carcass that will grade select or better. It excludes cattle being "backgrounded only" for later sale as feeders or later placement in another feedlot.

**Placements** are cattle put into a feedlot, fed a ration which will produce a carcass that will grade select or better, and are intended for the slaughter market.

**Marketings** are cattle shipped out of feedlots to a slaughter market.

**Other disappearance** includes death loss, movement from feedlots to pasture, and shipments to other feedlots for further feeding.

## Reliability of Cattle on Feed Estimates

**Survey Procedures:** During January and July all known feedlots in the U.S. with capacity of 1,000 or more head are surveyed to provide data for cattle on feed estimates. During the other months, all known feedlots from 17 States are surveyed. The 17 States account for 98 percent of the cattle on feed.

**Estimating Procedures:** These cattle on feed estimates were prepared by the Agricultural Statistics Board after reviewing recommendations and analysis submitted by each State office. Regional and State survey data were reviewed for reasonableness with each other and with estimates from the previous month when setting the current estimates.

**Revision Policy:** Revisions to previous estimates are made to improve month to month relationships. Estimates for the previous month are subject to revision in all States each month when current estimates are made. In February, all monthly estimates for the previous year, and the number of feedlots and annual marketings from two years ago are reviewed and subject to revisions. The reviews are primarily based on slaughter data, state check-off or brand data, and any other data that may have been received after the original estimate was made. Estimates will also be reviewed after data from the Census of Agriculture are available. No revisions will be made after that date and estimates become final.

**Reliability:** Since all 1000+ capacity cattle on feed operators in every State are not included in the monthly survey, survey estimates are subject to sampling variability. Survey results are also subject to non-sampling errors such as omissions, duplications, and mistakes in reporting, recording, and processing the data. The effects of these errors cannot be measured directly. They are minimized through rigid quality controls in the data collection process and through a careful review of all reported data for consistency and reasonableness.



The next "Cattle on Feed" report will be released at 3 p.m. ET on May 17, 2002.

The United States Department of Agriculture (USDA) prohibits discrimination in all its programs on the basis of race, color, national origin, gender, religion, age, disability, political beliefs, sexual orientation, and marital or family status. (Not all prohibited bases apply to all programs.) Persons with disabilities who require alternative means for communication of program information (braille, large print, audiotape, etc.) should contact the USDA's TARGET Center at 202-720-2600 (voice and TDD).

To file a complaint of discrimination, write USDA, Director, Office of Civil Rights, Room 326-W, Whitten Building, 1400 Independence Avenue, SW, Washington, D.C., 20250-9410, or call 202-720-5964 (voice or TDD). USDA is an equal opportunity provider and employer.

## **ACCESS TO REPORTS!!**

---

For your convenience, there are several ways to obtain NASS reports, data products, and services:

### **INTERNET ACCESS**

All NASS reports are available free of charge on the worldwide Internet. For access, connect to the Internet and go to the NASS Home Page at: <http://www.usda.gov/nass/>. Select "Today's Reports" or Publications and then Reports by Calendar or Publications and then Search, by Title or Subject.

### **E-MAIL SUBSCRIPTION**

There are two options for subscribing via e-mail. All NASS reports are available by subscription free of charge direct to your e-mail address. 1) Starting with the NASS Home Page at <http://www.usda.gov/nass/>, click on **Publications**, then click on the **Subscribe by E-mail** button which takes you to the page describing e-mail delivery of reports. Finally, click on **Go to the Subscription Page** and follow the instructions. 2) If you do NOT have Internet access, send an e-mail message to: [usda-reports@usda.mannlib.cornell.edu](mailto:usda-reports@usda.mannlib.cornell.edu). In the body of the message type the word: **list**.

### **AUTOFAX ACCESS**

NASSFax service is available for some reports from your fax machine. Please call 202-720-2000, using the handset attached to your fax. Respond to the voice prompts. Document 0411 is a list of available reports.

-----

### **PRINTED REPORTS OR DATA PRODUCTS**

**CALL OUR TOLL-FREE ORDER DESK: 800-999-6779 (U.S. and Canada)**  
**Other areas, please call 703-605-6220      FAX: 703-605-6900**  
**(Visa, MasterCard, check, or money order acceptable for payment.)**

-----

### **ASSISTANCE**

For **assistance** with general agricultural statistics or further information about NASS or its products or services, contact the **Agricultural Statistics Hotline** at **800-727-9540**, 7:30 a.m. to 4:00 p.m. ET, or e-mail: [nass@nass.usda.gov](mailto:nass@nass.usda.gov).

---