



Cattle on Feed

Released May 17, 2002, by the National Agricultural Statistics Service (NASS), Agricultural Statistics Board, U.S. Department of Agriculture. For information on "Cattle on Feed" call Steve Anderson at (202) 720-3040, office hours 7:30 a.m. to 4:00 p.m. ET.

U.S. Cattle on Feed Down 2 Percent

Cattle and calves on feed for slaughter market in the United States for feedlots with capacity of 1,000 or more head totaled 10.96 million head on May 1, 2002. The inventory was 2 percent below May 1, 2001 but slightly above May 1, 2000.

Placements in feedlots during April totaled 1.45 million, 6 percent below 2001 and 15 percent below 2000. Net placements were 1.37 million. During April, placements of cattle and calves weighing less than 600 pounds were 210,000, 600-699 pounds were 255,000, 700-799 pounds were 512,000, and 800 pounds and greater were 476,000.

Marketings of fed cattle during April totaled 1.99 million, 10 percent above 2001 and 6 percent above 2000.

Other disappearance totaled 83,000 during April, 7 percent below 2001 and 8 percent below 2000.

Cattle on Feed in Historic 7 States Down 2 Percent

Cattle on feed May 1, 2002, in the historic 7 States for feedlots with capacity of 1,000 or more head totaled 9.39 million, down 2 percent from the previous year and down slightly from May 1, 2000.

Placements in feedlots during April totaled 1.24 million, 7 percent below 2001 and 16 percent below 2000.

Marketings during April totaled 1.71 million, 11 percent above 2001 and 7 percent above 2000.

Other disappearance during April was 71,000 head, 4 percent below 2001 but unchanged from 2000.

**Cattle on Feed: Number on Feed, Placements, Marketings, and
Other Disappearance, 1,000+ Capacity Feedlots,
United States, May 1, 2000-2002**

Item	Number			2002 as % of	
	2000	2001	2002	2000	2001
	<i>1,000 Head</i>	<i>1,000 Head</i>	<i>1,000 Head</i>	<i>Percent</i>	<i>Percent</i>
On Feed Apr 1 ¹	11,202	11,523	11,577	103	100
Placed on Feed During Apr	1,707	1,551	1,453	85	94
Fed Cattle Marketed During Apr	1,875	1,815	1,991	106	110
Other Disappearance During Apr ²	90	89	83	92	93
On Feed May 1 ¹	10,944	11,170	10,956	100	98

¹ Cattle and calves on feed are animals for slaughter market being fed a ration of grain or other concentrates and are expected to produce a carcass that will grade select or better.

² Includes death loss, movement from feedlots to pasture, and shipments to other feedlots for further feeding.

**Cattle on Feed: Number on Feed, Placements, Marketings, and
Other Disappearance, 1,000+ Capacity Feedlots,
United States, April 1, 2000-2002**

Item	Number			2002 as % of	
	2000	2001	2002	2000	2001
	<i>1,000 Head</i>	<i>1,000 Head</i>	<i>1,000 Head</i>	<i>Percent</i>	<i>Percent</i>
On Feed Mar 1 ¹	11,330	11,695	11,518	102	98
Placed on Feed During Mar	2,031	1,842	1,953	96	106
Fed Cattle Marketed During Mar	2,056	1,916	1,825	89	95
Other Disappearance During Mar ²	103	98	69	67	70
On Feed Apr 1 ¹	11,202	11,523	11,577	103	100

¹ Cattle and calves on feed are animals for slaughter market being fed a ration of grain or other concentrates and are expected to produce a carcass that will grade select or better.

² Includes death loss, movement from feedlots to pasture, and shipments to other feedlots for further feeding.

**Cattle on Feed: Number on Feed, Placements, Marketings, and
Other Disappearance, 1,000+ Capacity Feedlots,
7 States, May 1, 2000-2002 ¹**

Item	Number			2002 as % of	
	2000	2001	2002	2000	2001
	<i>1,000 Head</i>	<i>1,000 Head</i>	<i>1,000 Head</i>	<i>Percent</i>	<i>Percent</i>
On Feed Apr 1 ²	9,593	9,859	9,934	104	101
Placed on Feed During Apr	1,470	1,324	1,235	84	93
Fed Cattle Marketed During Apr	1,601	1,546	1,709	107	111
Other Disappearance During Apr ³	71	74	71	100	96
On Feed May 1 ²	9,391	9,563	9,389	100	98

¹ The 7 States include AZ, CA, CO, IA, KS, NE, and TX.

² Cattle and calves on feed are animals for slaughter market being fed a ration of grain or other concentrates and are expected to produce a carcass that will grade select or better.

³ Includes death loss, movement from feedlots to pasture, and shipments to other feedlots for further feeding.

**Cattle on Feed: Number on Feed, Placements, Marketings, and
Other Disappearance, 1,000+ Capacity Feedlots,
7 States, April 1, 2000-2002 ¹**

Item	Number			2002 as % of	
	2000	2001	2002	2000	2001
	<i>1,000 Head</i>	<i>1,000 Head</i>	<i>1,000 Head</i>	<i>Percent</i>	<i>Percent</i>
On Feed Mar 1 ²	9,695	10,012	9,905	102	99
Placed on Feed During Mar	1,736	1,530	1,654	95	108
Fed Cattle Marketed During Mar	1,764	1,603	1,565	89	98
Other Disappearance During Mar ³	74	80	60	81	75
On Feed Apr 1 ²	9,593	9,859	9,934	104	101

¹ The 7 States include AZ, CA, CO, IA, KS, NE, and TX.

² Cattle and calves on feed are animals for slaughter market being fed a ration of grain or other concentrates and are expected to produce a carcass that will grade select or better.

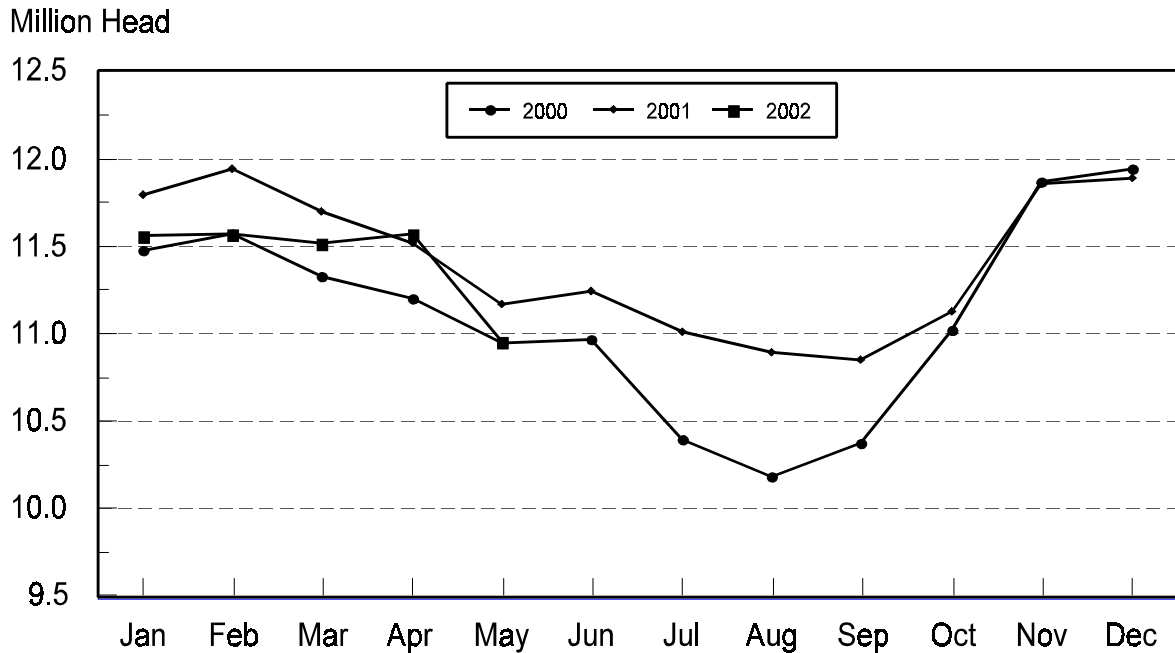
³ Includes death loss, movement from feedlots to pasture, and shipments to other feedlots for further feeding.

**Cattle on Feed: Number on Feed, 1,000+ Capacity Feedlots,
by Month, State, and United States 2001-2002 ¹**

State	May 1, 2001	Apr 1, 2002	May 1, 2002		
			Number	as % of 2001	as % of Apr
	<i>1,000 Head</i>	<i>1,000 Head</i>	<i>1,000 Head</i>	<i>Percent</i>	<i>Percent</i>
AZ	308	314	304	99	97
CA	435	485	480	110	99
CO	1,170	1,120	1,080	92	96
ID	330	325	315	95	97
IA	380	395	385	101	97
KS	2,380	2,420	2,270	95	94
NE	2,250	2,300	2,170	96	94
NM	83	113	102	123	90
OK	345	360	340	99	94
SD	215	220	215	100	98
TX	2,640	2,900	2,700	102	93
WA	254	230	215	85	93
Oth Sts	380	395	380	100	96
US	11,170	11,577	10,956	98	95

¹ Cattle and calves on feed are animals for slaughter market being fed a ration of grain or other concentrates and are expected to produce a carcass that will grade select or better.

**United States Cattle on Feed
1,000+ Capacity Feedlots**



**Cattle on Feed: Number Placed on Feed, 1,000+ Capacity Feedlots,
by Month, State, and United States 2001-2002**

State	During Apr 2001	During Mar 2002	During Apr 2002		
			Number	as % of 2001	as % of Mar
	<i>1,000 Head</i>	<i>1,000 Head</i>	<i>1,000 Head</i>	<i>Percent</i>	<i>Percent</i>
AZ	27	32	26	96	81
CA	60	68	59	98	87
CO	160	200	165	103	83
ID	56	70	52	93	74
IA	37	49	40	108	82
KS	350	435	320	91	74
NE	250	310	260	104	84
NM	12	19	11	92	58
OK	51	80	49	96	61
SD	27	44	28	104	64
TX	440	560	365	83	65
WA	37	40	26	70	65
Oth Sts	44	46	52	118	113
US	1,551	1,953	1,453	94	74

**Cattle on Feed: Number Placed on Feed by Weight Group, 1,000+ Capacity
Feedlots, by Month, State, and United States, 2001-2002**

State	During April									
	Under 600		600-699		700-799		800 Plus		Total	
	2001	2002	2001	2002	2001	2002	2001	2002	2001	2002
	<i>1,000 Head</i>	<i>1,000 Head</i>	<i>1,000 Head</i>	<i>1,000 Head</i>	<i>1,000 Head</i>	<i>1,000 Head</i>	<i>1,000 Head</i>	<i>1,000 Head</i>	<i>1,000 Head</i>	<i>1,000 Head</i>
CO	19	9	40	33	57	65	44	58	160	165
KS	75	20	80	50	130	125	65	125	350	320
NE	40	26	68	49	77	82	65	103	250	260
TX	105	70	140	80	140	145	55	70	440	365
Oth Sts	95	85	56	43	90	95	110	120	351	343
US	334	210	384	255	494	512	339	476	1,551	1,453
	During March									
	Under 600		600-699		700-799		800 Plus		Total	
	2001	2002	2001	2002	2001	2002	2001	2002	2001	2002
	<i>1,000 Head</i>	<i>1,000 Head</i>	<i>1,000 Head</i>	<i>1,000 Head</i>	<i>1,000 Head</i>	<i>1,000 Head</i>	<i>1,000 Head</i>	<i>1,000 Head</i>	<i>1,000 Head</i>	<i>1,000 Head</i>
CO	28	21	38	41	85	72	69	66	220	200
KS	60	45	95	75	150	180	90	135	395	435
NE	31	33	69	63	109	100	111	114	320	310
TX	100	105	145	120	155	225	55	110	455	560
Oth Sts	110	110	67	73	115	125	160	140	452	448
US	329	314	414	372	614	702	485	565	1,842	1,953

**Cattle on Feed: Number Marketed, 1,000+ Capacity Feedlots,
by Month, State, and United States 2001-2002**

State	During Apr 2001	During Mar 2002	During Apr 2002		
			Number	as % of 2001	as % of Mar
	<i>1,000 Head</i>	<i>1,000 Head</i>	<i>1,000 Head</i>	<i>Percent</i>	<i>Percent</i>
AZ	25	27	34	136	126
CA	50	55	61	122	111
CO	170	215	190	112	88
ID	53	59	60	113	102
IA	41	53	49	120	92
KS	395	420	445	113	106
NE	345	300	380	110	127
NM	25	14	21	84	150
OK	72	64	67	93	105
SD	25	33	32	128	97
TX	520	495	550	106	111
WA	39	37	39	100	105
Oth Sts	55	53	63	115	119
US	1,815	1,825	1,991	110	109

**Cattle on Feed: Other Disappearance, 1,000+ Capacity Feedlots,
by Month, State, and United States 2001-2002 ¹**

State	During Apr 2001	During Mar 2002	During Apr 2002		
			Number	as % of 2001	as % of Mar
	<i>1,000 Head</i>	<i>1,000 Head</i>	<i>1,000 Head</i>	<i>Percent</i>	<i>Percent</i>
AZ	3	1	2	67	200
CA	10	3	3	30	100
CO	10	15	15	150	100
ID	3	1	2	67	200
IA	1	1	1	100	100
KS	35	15	25	71	167
NE	5	10	10	200	100
NM	1	1	1	100	100
OK	4	1	2	50	200
SD	2	1	1	50	100
TX	10	15	15	150	100
WA	1	2	2	200	100
Oth Sts	4	3	4	100	133
US	89	69	83	93	120

¹ Includes death loss, movement from feedlots to pasture, and shipments to other feedlots for further feeding.

Terms and Definitions of Cattle on Feed Estimates

Cattle on feed are animals being fed a ration of grain, silage, hay and/or protein supplement for slaughter market that are expected to produce a carcass that will grade select or better. It excludes cattle being "backgrounded only" for later sale as feeders or later placement in another feedlot.

Placements are cattle put into a feedlot, fed a ration which will produce a carcass that will grade select or better, and are intended for the slaughter market.

Marketings are cattle shipped out of feedlots to a slaughter market.

Other disappearance includes death loss, movement from feedlots to pasture, and shipments to other feedlots for further feeding.

Reliability of Cattle on Feed Estimates

Survey Procedures: During January and July all known feedlots in the U.S. with capacity of 1,000 or more head are surveyed to provide data for cattle on feed estimates. During the other months, all known feedlots from 17 States are surveyed. The 17 States account for 98 percent of the cattle on feed in feedlots with capacity of 1,000 or more head.

Estimating Procedures: These cattle on feed estimates were prepared by the Agricultural Statistics Board after reviewing recommendations and analysis submitted by each State office. Regional and State survey data were reviewed for reasonableness with each other and with estimates from the previous month when setting the current estimates.

Revision Policy: Revisions to previous estimates are made to improve month to month relationships. Estimates for the previous month are subject to revision in all States each month when current estimates are made. In February, all monthly estimates for the previous year, and the number of feedlots and annual marketings from two years ago are reviewed and subject to revisions. The reviews are primarily based on slaughter data, state check-off or brand data, and any other data that may have been received after the original estimate was made. Estimates will also be reviewed after data from the Census of Agriculture are available. No revisions will be made after that date and estimates become final.

Reliability: Since all 1000+ capacity cattle on feed operators in every State are not included in the monthly survey, survey estimates are subject to sampling variability. Survey results are also subject to non-sampling errors such as omissions, duplications, and mistakes in reporting, recording, and processing the data. The effects of these errors cannot be measured directly. They are minimized through rigid quality controls in the data collection process and through a careful review of all reported data for consistency and reasonableness.

The next "Cattle on Feed" report will be released at 3 p.m. ET on June 21, 2002.

The United States Department of Agriculture (USDA) prohibits discrimination in all its programs on the basis of race, color, national origin, gender, religion, age, disability, political beliefs, sexual orientation, and marital or family status. (Not all prohibited bases apply to all programs.) Persons with disabilities who require alternative means for communication of program information (braille, large print, audiotape, etc.) should contact the USDA's TARGET Center at 202-720-2600 (voice and TDD).

To file a complaint of discrimination, write USDA, Director, Office of Civil Rights, Room 326-W, Whitten Building, 1400 Independence Avenue, SW, Washington, D.C., 20250-9410, or call 202-720-5964 (voice or TDD). USDA is an equal opportunity provider and employer.

ACCESS TO REPORTS!!

For your convenience, there are several ways to obtain NASS reports, data products, and services:

INTERNET ACCESS

All NASS reports are available free of charge on the worldwide Internet. For access, connect to the Internet and go to the NASS Home Page at: <http://www.usda.gov/nass/>. Select "Today's Reports" or Publications and then Reports by Calendar or Publications and then Search, by Title or Subject.

E-MAIL SUBSCRIPTION

There are two options for subscribing via e-mail. All NASS reports are available by subscription free of charge direct to your e-mail address. 1) Starting with the NASS Home Page at <http://www.usda.gov/nass/>, click on **Publications**, then click on the **Subscribe by E-mail** button which takes you to the page describing e-mail delivery of reports. Finally, click on **Go to the Subscription Page** and follow the instructions. 2) If you do NOT have Internet access, send an e-mail message to: usda-reports@usda.mannlib.cornell.edu. In the body of the message type the word: **list**.

AUTOFAX ACCESS

NASSFax service is available for some reports from your fax machine. Please call 202-720-2000, using the handset attached to your fax. Respond to the voice prompts. Document 0411 is a list of available reports.

PRINTED REPORTS OR DATA PRODUCTS

CALL OUR TOLL-FREE ORDER DESK: 800-999-6779 (U.S. and Canada)
Other areas, please call 703-605-6220 FAX: 703-605-6900
(Visa, MasterCard, check, or money order acceptable for payment.)

ASSISTANCE

For **assistance** with general agricultural statistics or further information about NASS or its products or services, contact the **Agricultural Statistics Hotline** at **800-727-9540**, 7:30 a.m. to 4:00 p.m. ET, or e-mail: nass@nass.usda.gov.
