



# Cattle on Feed

---

Released June 21, 2002, by the National Agricultural Statistics Service (NASS), Agricultural Statistics Board, U.S. Department of Agriculture. For information on "Cattle on Feed" call Steve Anderson at (202) 720-3040, office hours 7:30 a.m. to 4:00 p.m. ET.

## U.S. Cattle on Feed Down 3 Percent

**Cattle and calves on feed** for slaughter market in the United States for feedlots with capacity of 1,000 or more head totaled 10.94 million head on June 1, 2002. The inventory was 3 percent below June 1, 2001 and slightly below June 1, 2000.

**Placements** in feedlots during May totaled 2.23 million, 6 percent below 2001 and 3 percent below 2000. Net placements were 2.16 million. During May, placements of cattle and calves weighing less than 600 pounds were 350,000, 600-699 pounds were 434,000, 700-799 pounds were 744,000, and 800 pounds and greater were 699,000.

**Marketings** of fed cattle during May totaled 2.17 million, 1 percent below 2001 and slightly below 2000.

**Other disappearance** totaled 72,000 during May, 29 percent below 2001 and 37 percent below 2000.

## Cattle on Feed in Historic 7 States Down 2 Percent

**Cattle on feed** June 1, 2002, in the historic 7 States for feedlots with capacity of 1,000 or more head totaled 9.42 million, down 2 percent from the previous year and down slightly from June 1, 2000.

**Placements** in feedlots during May totaled 1.95 million, 5 percent below 2001 and 2 percent below 2000.

**Marketings** during May totaled 1.86 million, 1 percent below 2001 and slightly below 2000.

**Other disappearance** during May was 61,000 head, 31 percent below 2001 and 28 percent below 2000.

**Cattle on Feed: Number on Feed, Placements, Marketings, and  
Other Disappearance, 1,000+ Capacity Feedlots,  
United States, June 1, 2000-2002**

Item	Number			2002 as % of	
	2000	2001	2002	2000	2001
	<i>1,000 Head</i>	<i>1,000 Head</i>	<i>1,000 Head</i>	<i>Percent</i>	<i>Percent</i>
On Feed May 1 <sup>1</sup>	10,944	11,170	*10,951	100	98
Placed on Feed During May	2,305	2,372	2,227	97	94
Fed Cattle Marketed During May	2,167	2,196	2,166	100	99
Other Disappearance During May <sup>2</sup>	115	101	72	63	71
On Feed Jun 1 <sup>1</sup>	10,967	11,245	10,940	100	97

\* Revised.

<sup>1</sup> Cattle and calves on feed are animals for slaughter market being fed a ration of grain or other concentrates and are expected to produce a carcass that will grade select or better.

<sup>2</sup> Includes death loss, movement from feedlots to pasture, and shipments to other feedlots for further feeding.

**Cattle on Feed: Number on Feed, Placements, Marketings, and  
Other Disappearance, 1,000+ Capacity Feedlots,  
United States, May 1, 2000-2002**

Item	Number			2002 as % of	
	2000	2001	2002	2000	2001
	<i>1,000 Head</i>	<i>1,000 Head</i>	<i>1,000 Head</i>	<i>Percent</i>	<i>Percent</i>
On Feed Apr 1 <sup>1</sup>	11,202	11,523	11,577	103	100
Placed on Feed During Apr	1,707	1,551	1,453	85	94
Fed Cattle Marketed During Apr	1,875	1,815	*1,996	106	110
Other Disappearance During Apr <sup>2</sup>	90	89	83	92	93
On Feed May 1 <sup>1</sup>	10,944	11,170	*10,951	100	98

\* Revised.

<sup>1</sup> Cattle and calves on feed are animals for slaughter market being fed a ration of grain or other concentrates and are expected to produce a carcass that will grade select or better.

<sup>2</sup> Includes death loss, movement from feedlots to pasture, and shipments to other feedlots for further feeding.

**Cattle on Feed: Number on Feed, Placements, Marketings, and  
Other Disappearance, 1,000+ Capacity Feedlots,  
7 States, June 1, 2000-2002 <sup>1</sup>**

Item	Number			2002 as % of	
	2000	2001	2002	2000	2001
	<i>1,000 Head</i>	<i>1,000 Head</i>	<i>1,000 Head</i>	<i>Percent</i>	<i>Percent</i>
On Feed May 1 <sup>2</sup>	9,391	9,563	9,389	100	98
Placed on Feed During May	1,998	2,060	1,950	98	95
Fed Cattle Marketed During May	1,863	1,875	1,859	100	99
Other Disappearance During May <sup>3</sup>	85	88	61	72	69
On Feed Jun 1 <sup>2</sup>	9,441	9,660	9,419	100	98

<sup>1</sup> The 7 States include AZ, CA, CO, IA, KS, NE, and TX.

<sup>2</sup> Cattle and calves on feed are animals for slaughter market being fed a ration of grain or other concentrates and are expected to produce a carcass that will grade select or better.

<sup>3</sup> Includes death loss, movement from feedlots to pasture, and shipments to other feedlots for further feeding.

**Cattle on Feed: Number on Feed, Placements, Marketings, and  
Other Disappearance, 1,000+ Capacity Feedlots,  
7 States, May 1, 2000-2002 <sup>1</sup>**

Item	Number			2002 as % of	
	2000	2001	2002	2000	2001
	<i>1,000 Head</i>	<i>1,000 Head</i>	<i>1,000 Head</i>	<i>Percent</i>	<i>Percent</i>
On Feed Apr 1 <sup>2</sup>	9,593	9,859	9,934	104	101
Placed on Feed During Apr	1,470	1,324	1,235	84	93
Fed Cattle Marketed During Apr	1,601	1,546	1,709	107	111
Other Disappearance During Apr <sup>3</sup>	71	74	71	100	96
On Feed May 1 <sup>2</sup>	9,391	9,563	9,389	100	98

<sup>1</sup> The 7 States include AZ, CA, CO, IA, KS, NE, and TX.

<sup>2</sup> Cattle and calves on feed are animals for slaughter market being fed a ration of grain or other concentrates and are expected to produce a carcass that will grade select or better.

<sup>3</sup> Includes death loss, movement from feedlots to pasture, and shipments to other feedlots for further feeding.

**Cattle on Feed: Number on Feed, 1,000+ Capacity Feedlots,  
by Month, State, and United States 2001-2002 <sup>1</sup>**

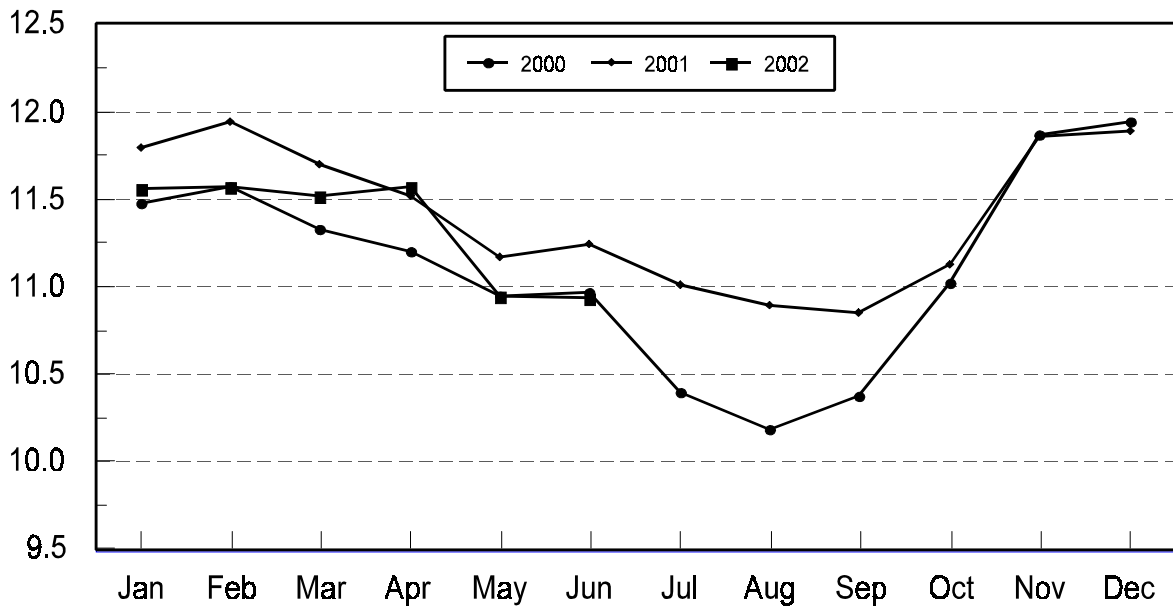
State	Jun 1, 2001	May 1, 2002	Jun 1, 2002		
			Number	as % of 2001	as % of May
	<i>1,000 Head</i>	<i>1,000 Head</i>	<i>1,000 Head</i>	<i>Percent</i>	<i>Percent</i>
AZ	305	304	299	98	98
CA	450	480	485	108	101
CO	1,160	1,080	1,090	94	101
ID	320	315	310	97	98
IA	365	385	375	103	97
KS	2,400	2,270	2,240	93	99
NE	2,090	2,170	2,060	99	95
NM	81	*97	96	119	99
OK	375	340	340	91	100
SD	200	215	205	103	95
TX	2,890	2,700	2,870	99	106
WA	244	215	200	82	93
Oth Sts	365	380	370	101	97
US	11,245	*10,951	10,940	97	100

\* Revised.

<sup>1</sup> Cattle and calves on feed are animals for slaughter market being fed a ration of grain or other concentrates and are expected to produce a carcass that will grade select or better.

**United States Cattle on Feed  
1,000+ Capacity Feedlots**

Million Head



**Cattle on Feed: Number Placed on Feed, 1,000+ Capacity Feedlots,  
by Month, State, and United States 2001-2002**

State	During May 2001	During Apr 2002	During May 2002		
			Number	as % of 2001	as % of Apr
	<i>1,000 Head</i>	<i>1,000 Head</i>	<i>1,000 Head</i>	<i>Percent</i>	<i>Percent</i>
AZ	41	26	32	78	123
CA	77	59	72	94	122
CO	190	165	205	108	124
ID	57	52	64	112	123
IA	37	40	46	124	115
KS	530	320	485	92	152
NE	375	260	350	93	135
NM	21	11	18	86	164
OK	115	49	75	65	153
SD	25	28	26	104	93
TX	810	365	760	94	208
WA	44	26	41	93	158
Oth Sts	50	52	53	106	102
US	2,372	1,453	2,227	94	153

**Cattle on Feed: Number Placed on Feed by Weight Group, 1,000+ Capacity  
Feedlots, by Month, State, and United States, 2001-2002**

State	During May									
	Under 600		600-699		700-799		800 Plus		Total	
	2001	2002	2001	2002	2001	2002	2001	2002	2001	2002
	<i>1,000 Head</i>	<i>1,000 Head</i>	<i>1,000 Head</i>	<i>1,000 Head</i>	<i>1,000 Head</i>	<i>1,000 Head</i>	<i>1,000 Head</i>	<i>1,000 Head</i>	<i>1,000 Head</i>	<i>1,000 Head</i>
CO	24	14	45	40	69	72	52	79	190	205
KS	80	50	120	90	210	185	120	160	530	485
NE	60	26	64	47	130	112	121	165	375	350
TX	205	150	205	205	270	265	130	140	810	760
Oth Sts	130	110	75	52	120	110	142	155	467	427
US	499	350	509	434	799	744	565	699	2,372	2,227
	During April									
	Under 600		600-699		700-799		800 Plus		Total	
	2001	2002	2001	2002	2001	2002	2001	2002	2001	2002
	<i>1,000 Head</i>	<i>1,000 Head</i>	<i>1,000 Head</i>	<i>1,000 Head</i>	<i>1,000 Head</i>	<i>1,000 Head</i>	<i>1,000 Head</i>	<i>1,000 Head</i>	<i>1,000 Head</i>	<i>1,000 Head</i>
CO	19	9	40	33	57	65	44	58	160	165
KS	75	20	80	50	130	125	65	125	350	320
NE	40	26	68	49	77	82	65	103	250	260
TX	105	70	140	80	140	145	55	70	440	365
Oth Sts	95	85	56	43	90	95	110	120	351	343
US	334	210	384	255	494	512	339	476	1,551	1,453

**Cattle on Feed: Number Marketed, 1,000+ Capacity Feedlots,  
by Month, State, and United States 2001-2002**

State	During May 2001	During Apr 2002	During May 2002		
			Number	as % of 2001	as % of Apr
	<i>1,000 Head</i>	<i>1,000 Head</i>	<i>1,000 Head</i>	<i>Percent</i>	<i>Percent</i>
AZ	34	34	36	106	106
CA	50	61	63	126	103
CO	190	190	185	97	97
ID	64	60	68	106	113
IA	51	49	55	108	112
KS	485	445	495	102	111
NE	520	380	445	86	117
NM	22	*26	17	77	65
OK	83	67	73	88	109
SD	37	32	34	92	106
TX	545	550	580	106	105
WA	53	39	55	104	141
Oth Sts	62	63	60	97	95
US	2,196	*1,996	2,166	99	109

\* Revised.

**Cattle on Feed: Other Disappearance, 1,000+ Capacity Feedlots,  
by Month, State, and United States 2001-2002 <sup>1</sup>**

State	During May 2001	During Apr 2002	During May 2002		
			Number	as % of 2001	as % of Apr
	<i>1,000 Head</i>	<i>1,000 Head</i>	<i>1,000 Head</i>	<i>Percent</i>	<i>Percent</i>
AZ	10	2	1	10	50
CA	12	3	4	33	133
CO	10	15	10	100	67
ID	3	2	1	33	50
IA	1	1	1	100	100
KS	25	25	20	80	80
NE	15	10	15	100	150
NM	1	1	2	200	200
OK	2	2	2	100	100
SD	3	1	2	67	200
TX	15	15	10	67	67
WA	1	2	1	100	50
Oth Sts	3	4	3	100	75
US	101	83	72	71	87

<sup>1</sup> Includes death loss, movement from feedlots to pasture, and shipments to other feedlots for further feeding.

## Terms and Definitions of Cattle on Feed Estimates

**Cattle on feed** are animals being fed a ration of grain, silage, hay and/or protein supplement for slaughter market that are expected to produce a carcass that will grade select or better. It excludes cattle being "backgrounded only" for later sale as feeders or later placement in another feedlot.

**Placements** are cattle put into a feedlot, fed a ration which will produce a carcass that will grade select or better, and are intended for the slaughter market.

**Marketings** are cattle shipped out of feedlots to a slaughter market.

**Other disappearance** includes death loss, movement from feedlots to pasture, and shipments to other feedlots for further feeding.

## Reliability of Cattle on Feed Estimates

**Survey Procedures:** During January and July all known feedlots in the U.S. with capacity of 1,000 or more head are surveyed to provide data for cattle on feed estimates. During the other months, all known feedlots from 17 States are surveyed. The 17 States account for 98 percent of the cattle on feed in feedlots with capacity of 1,000 or more head.

**Estimating Procedures:** These cattle on feed estimates were prepared by the Agricultural Statistics Board after reviewing recommendations and analysis submitted by each State office. Regional and State survey data were reviewed for reasonableness with each other and with estimates from the previous month when setting the current estimates.

**Revision Policy:** Revisions to previous estimates are made to improve month to month relationships. Estimates for the previous month are subject to revision in all States each month when current estimates are made. In February, all monthly estimates for the previous year, and the number of feedlots and annual marketings from two years ago are reviewed and subject to revisions. The reviews are primarily based on slaughter data, state check-off or brand data, and any other data that may have been received after the original estimate was made. Estimates will also be reviewed after data from the Census of Agriculture are available. No revisions will be made after that date and estimates become final.

**Reliability:** Since all 1000+ capacity cattle on feed operators in every State are not included in the monthly survey, survey estimates are subject to sampling variability. Survey results are also subject to non-sampling errors such as omissions, duplications, and mistakes in reporting, recording, and processing the data. The effects of these errors cannot be measured directly. They are minimized through rigid quality controls in the data collection process and through a careful review of all reported data for consistency and reasonableness.

The next "Cattle on Feed" report will be released at 3 p.m. ET on July 19, 2002.

The United States Department of Agriculture (USDA) prohibits discrimination in all its programs on the basis of race, color, national origin, gender, religion, age, disability, political beliefs, sexual orientation, and marital or family status. (Not all prohibited bases apply to all programs.) Persons with disabilities who require alternative means for communication of program information (braille, large print, audiotape, etc.) should contact the USDA's TARGET Center at 202-720-2600 (voice and TDD).

To file a complaint of discrimination, write USDA, Director, Office of Civil Rights, Room 326-W, Whitten Building, 1400 Independence Avenue, SW, Washington, D.C., 20250-9410, or call 202-720-5964 (voice or TDD). USDA is an equal opportunity provider and employer.

## **ACCESS TO REPORTS!!**

---

For your convenience, there are several ways to obtain NASS reports, data products, and services:

### **INTERNET ACCESS**

All NASS reports are available free of charge on the worldwide Internet. For access, connect to the Internet and go to the NASS Home Page at: <http://www.usda.gov/nass/>. Select "Today's Reports" or Publications and then Reports by Calendar or Publications and then Search, by Title or Subject.

### **E-MAIL SUBSCRIPTION**

There are two options for subscribing via e-mail. All NASS reports are available by subscription free of charge direct to your e-mail address. 1) Starting with the NASS Home Page at <http://www.usda.gov/nass/>, click on **Publications**, then click on the **Subscribe by E-mail** button which takes you to the page describing e-mail delivery of reports. Finally, click on **Go to the Subscription Page** and follow the instructions. 2) If you do NOT have Internet access, send an e-mail message to: [usda-reports@usda.mannlib.cornell.edu](mailto:usda-reports@usda.mannlib.cornell.edu). In the body of the message type the word: **list**.

### **AUTOFAX ACCESS**

NASSFax service is available for some reports from your fax machine. Please call 202-720-2000, using the handset attached to your fax. Respond to the voice prompts. Document 0411 is a list of available reports.

-----

### **PRINTED REPORTS OR DATA PRODUCTS**

**CALL OUR TOLL-FREE ORDER DESK: 800-999-6779 (U.S. and Canada)**  
**Other areas, please call 703-605-6220      FAX: 703-605-6900**  
**(Visa, MasterCard, check, or money order acceptable for payment.)**

-----

### **ASSISTANCE**

For **assistance** with general agricultural statistics or further information about NASS or its products or services, contact the **Agricultural Statistics Hotline** at **800-727-9540**, 7:30 a.m. to 4:00 p.m. ET, or e-mail: [nass@nass.usda.gov](mailto:nass@nass.usda.gov).

---