



Cattle on Feed

Released July 19, 2002, by the National Agricultural Statistics Service (NASS), Agricultural Statistics Board, U.S. Department of Agriculture. For information on "Cattle on Feed" call Steve Anderson at (202) 720-3040, office hours 7:30 a.m. to 4:00 p.m. ET.

U.S. Cattle on Feed Down 5 Percent

Cattle and calves on feed for slaughter market in the United States for feedlots with capacity of 1,000 or more head totaled 10.49 million head on July 1, 2002. The inventory was 5 percent below July 1, 2001 but 1 percent above July 1, 2000. The inventory included 6.46 million steers and steer calves, down 1 percent from the previous year. This group accounted for 62 percent of the total inventory. Heifers and heifer calves accounted for 3.97 million head, down 11 percent from 2001.

Placements in feedlots during June totaled 1.64 million, 16 percent below 2001 and 1 percent below 2000. Net placements were 1.59 million. During June, placements of cattle and calves weighing less than 600 pounds were 341,000, 600-699 pounds were 356,000, 700-799 pounds were 513,000, and 800 pounds and greater were 434,000.

Marketings of fed cattle during June totaled 2.08 million, 2 percent below 2001 and 5 percent below 2000.

Other disappearance totaled 51,000 during June, 34 percent below 2001 and 11 percent below 2000.

Cattle on Feed in Historic 7 States Down 4 Percent

Cattle on feed July 1, 2002, in the historic 7 States for feedlots with capacity of 1,000 or more head totaled 9.06 million, down 4 percent from the previous year but 1 percent above July 1, 2000. The inventory included 5.54 million steers and steer calves, up slightly from the previous year. This group accounted for 61 percent of the total inventory. Heifers and heifer calves accounted for 3.47 million head, down 11 percent from 2001.

Placements in feedlots during June totaled 1.42 million, 16 percent below 2001 but 1 percent above 2000.

Marketings during June totaled 1.77 million, 3 percent below 2001 and 4 percent below 2000.

Other disappearance during June was 42,000 head, 30 percent below 2001 but up 14 percent from 2000.

U.S. All Cattle on Feed Down 5 Percent

Cattle on feed July 1, 2002, from all feedlots in the United States, totaled 12.4 million, down 5 percent from the 13.0 million on July 1, 2001 but 1 percent above July 1, 2000. Cattle on feed in feedlots with 1,000 or more head accounted for 85 percent of the total cattle on feed on July 1, 2002.

**Cattle on Feed: Number on Feed, Placements, Marketings, and
Other Disappearance, 1,000+ Capacity Feedlots,
United States, July 1, 2000-2002**

| Item | Number | | | 2002 as % of | |
|---|-------------------|-------------------|-------------------|----------------|----------------|
| | 2000 | 2001 | 2002 | 2000 | 2001 |
| | <i>1,000 Head</i> | <i>1,000 Head</i> | <i>1,000 Head</i> | <i>Percent</i> | <i>Percent</i> |
| On Feed Jun 1 ¹ | 10,967 | 11,245 | *10,970 | 100 | 98 |
| Placed on Feed During Jun | 1,664 | 1,965 | 1,644 | 99 | 84 |
| Fed Cattle Marketed During Jun | 2,175 | 2,122 | 2,076 | 95 | 98 |
| Other Disappearance During Jun ² | 57 | 77 | 51 | 89 | 66 |
| On Feed Jul 1 ¹ | 10,399 | 11,011 | 10,487 | 101 | 95 |

* Revised.

¹ Cattle and calves on feed are animals for slaughter market being fed a ration of grain or other concentrates and are expected to produce a carcass that will grade select or better.

² Includes death loss, movement from feedlots to pasture, and shipments to other feedlots for further feeding.

**Cattle on Feed: Number on Feed, Placements, Marketings, and
Other Disappearance, 1,000+ Capacity Feedlots,
United States, June 1, 2000-2002**

| Item | Number | | | 2002 as % of | |
|---|-------------------|-------------------|-------------------|----------------|----------------|
| | 2000 | 2001 | 2002 | 2000 | 2001 |
| | <i>1,000 Head</i> | <i>1,000 Head</i> | <i>1,000 Head</i> | <i>Percent</i> | <i>Percent</i> |
| On Feed May 1 ¹ | 10,944 | 11,170 | 10,951 | 100 | 98 |
| Placed on Feed During May | 2,305 | 2,372 | *2,267 | 98 | 96 |
| Fed Cattle Marketed During May | 2,167 | 2,196 | *2,171 | 100 | 99 |
| Other Disappearance During May ² | 115 | 101 | *77 | 67 | 76 |
| On Feed Jun 1 ¹ | 10,967 | 11,245 | *10,970 | 100 | 98 |

* Revised.

¹ Cattle and calves on feed are animals for slaughter market being fed a ration of grain or other concentrates and are expected to produce a carcass that will grade select or better.

² Includes death loss, movement from feedlots to pasture, and shipments to other feedlots for further feeding.

**Cattle on Feed: Number on Feed by Class, 1,000+ Capacity Feedlots,
United States, July 1, 2000-2002**

| Item | Number | | | 2002 as % of | |
|---------------------------|-------------------|-------------------|-------------------|----------------|----------------|
| | 2000 | 2001 | 2002 | 2000 | 2001 |
| | <i>1,000 Head</i> | <i>1,000 Head</i> | <i>1,000 Head</i> | <i>Percent</i> | <i>Percent</i> |
| Class on Feed Jul 1 | | | | | |
| Steers and Steer Calves | 6,220 | 6,494 | 6,457 | 104 | 99 |
| Heifers and Heifer Calves | 4,137 | 4,446 | 3,967 | 96 | 89 |
| Cows and Bulls | 42 | 71 | 63 | 150 | 89 |

**Cattle on Feed: Number on Feed, Placements, Marketings, and
Other Disappearance, 1,000+ Capacity Feedlots,
7 States, July 1, 2000-2002 ¹**

| Item | Number | | | 2002 as % of | |
|---|-------------------|-------------------|-------------------|----------------|----------------|
| | 2000 | 2001 | 2002 | 2000 | 2001 |
| | <i>1,000 Head</i> | <i>1,000 Head</i> | <i>1,000 Head</i> | <i>Percent</i> | <i>Percent</i> |
| On Feed Jun 1 ² | 9,441 | 9,660 | *9,449 | 100 | 98 |
| Placed on Feed During Jun | 1,413 | 1,690 | 1,422 | 101 | 84 |
| Fed Cattle Marketed During Jun | 1,848 | 1,824 | 1,773 | 96 | 97 |
| Other Disappearance During Jun ³ | 37 | 60 | 42 | 114 | 70 |
| On Feed Jul 1 ² | 8,969 | 9,466 | 9,056 | 101 | 96 |

* Revised.

¹ The 7 States include AZ, CA, CO, IA, KS, NE, and TX.

² Cattle and calves on feed are animals for slaughter market being fed a ration of grain or other concentrates and are expected to produce a carcass that will grade select or better.

³ Includes death loss, movement from feedlots to pasture, and shipments to other feedlots for further feeding.

**Cattle on Feed: Number on Feed, Placements, Marketings, and
Other Disappearance, 1,000+ Capacity Feedlots,
7 States, June 1, 2000-2002 ¹**

| Item | Number | | | 2002 as % of | |
|---|-------------------|-------------------|-------------------|----------------|----------------|
| | 2000 | 2001 | 2002 | 2000 | 2001 |
| | <i>1,000 Head</i> | <i>1,000 Head</i> | <i>1,000 Head</i> | <i>Percent</i> | <i>Percent</i> |
| On Feed May 1 ² | 9,391 | 9,563 | 9,389 | 100 | 98 |
| Placed on Feed During May | 1,998 | 2,060 | *1,990 | 100 | 97 |
| Fed Cattle Marketed During May | 1,863 | 1,875 | *1,864 | 100 | 99 |
| Other Disappearance During May ³ | 85 | 88 | *66 | 78 | 75 |
| On Feed Jun 1 ² | 9,441 | 9,660 | *9,449 | 100 | 98 |

* Revised.

¹ The 7 States include AZ, CA, CO, IA, KS, NE, and TX.

² Cattle and calves on feed are animals for slaughter market being fed a ration of grain or other concentrates and are expected to produce a carcass that will grade select or better.

³ Includes death loss, movement from feedlots to pasture, and shipments to other feedlots for further feeding.

**Cattle on Feed: Number on Feed by Class, 1,000+ Capacity Feedlots,
7 States, July 1, 2000-2002 ¹**

| Item | Number | | | 2002 as % of | |
|---------------------------|-------------------|-------------------|-------------------|----------------|----------------|
| | 2000 | 2001 | 2002 | 2000 | 2001 |
| | <i>1,000 Head</i> | <i>1,000 Head</i> | <i>1,000 Head</i> | <i>Percent</i> | <i>Percent</i> |
| Class on Feed Jul 1 | | | | | |
| Steers and Steer Calves | 5,326 | 5,521 | 5,541 | 104 | 100 |
| Heifers and Heifer Calves | 3,612 | 3,894 | 3,474 | 96 | 89 |
| Cows and Bulls | 31 | 51 | 41 | 132 | 80 |

¹ The 7 States include AZ, CA, CO, IA, KS, NE, and TX.

**Cattle on Feed: Number on Feed, 1,000+ Capacity Feedlots,
by Month, State, and United States 2001-2002 ¹**

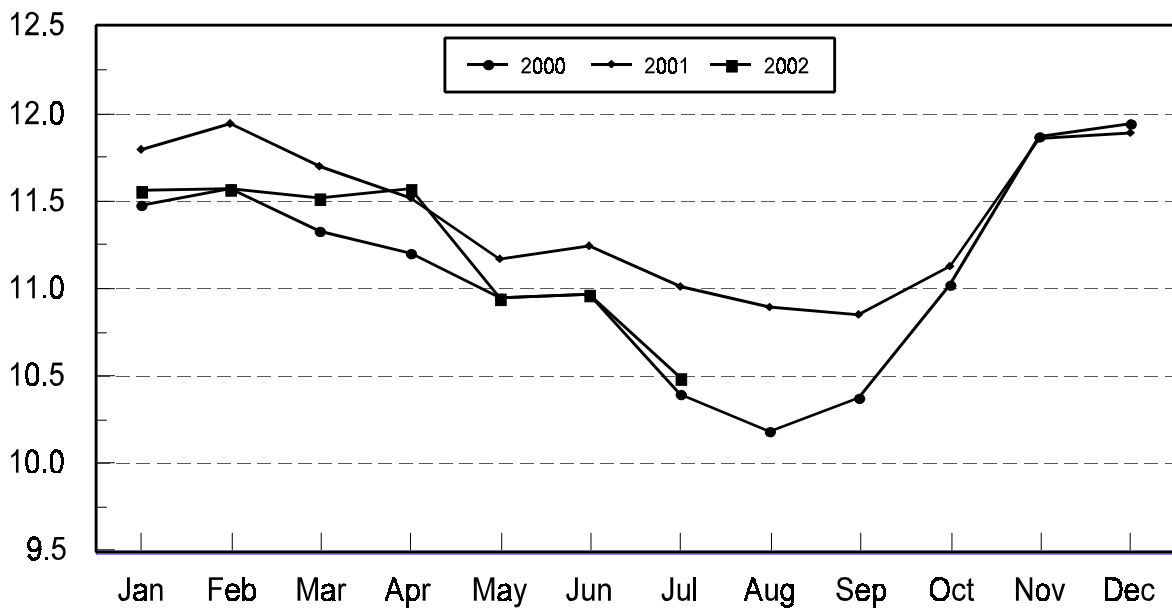
| State | Jul 1, 2001 | Jun 1, 2002 | Jul 1, 2002 | | |
|---------|-------------------|-------------------|-------------------|----------------|----------------|
| | | | Number | as % of 2001 | as % of Jun |
| | <i>1,000 Head</i> | <i>1,000 Head</i> | <i>1,000 Head</i> | <i>Percent</i> | <i>Percent</i> |
| AZ | 291 | 299 | 291 | 100 | 97 |
| CA | 470 | 485 | 485 | 103 | 100 |
| CO | 1,110 | 1,090 | 1,030 | 93 | 94 |
| ID | 320 | 310 | 300 | 94 | 97 |
| IA | 345 | 375 | 350 | 101 | 93 |
| KS | 2,350 | *2,270 | 2,160 | 92 | 95 |
| NE | 1,900 | 2,060 | 1,890 | 99 | 92 |
| NM | 98 | 96 | 101 | 103 | 105 |
| OK | 390 | 340 | 325 | 83 | 96 |
| SD | 175 | 205 | 175 | 100 | 85 |
| TX | 3,000 | 2,870 | 2,850 | 95 | 99 |
| WA | 227 | 200 | 180 | 79 | 90 |
| Oth Sts | 335 | 370 | 350 | 104 | 95 |
| US | 11,011 | *10,970 | 10,487 | 95 | 96 |

* Revised.

¹ Cattle and calves on feed are animals for slaughter market being fed a ration of grain or other concentrates and are expected to produce a carcass that will grade select or better.

**United States Cattle on Feed
1,000+ Capacity Feedlots**

Million Head



**Cattle on Feed: Number Placed on Feed, 1,000+ Capacity Feedlots,
by Month, State, and United States 2001-2002**

| State | During Jun 2001 | During May 2002 | During Jun 2002 | | |
|---------|--------------------|--------------------|-------------------|-----------------|----------------|
| | | | Number | as % of 2001 | as % of May |
| | <i>1,000 Head</i> | <i>1,000 Head</i> | <i>1,000 Head</i> | <i>Percent</i> | <i>Percent</i> |
| AZ | 32 | 32 | 24 | 75 | 75 |
| CA | 77 | 72 | 67 | 87 | 93 |
| CO | 160 | *210 | 155 | 97 | 74 |
| ID | 69 | 64 | 49 | 71 | 77 |
| IA | 36 | 46 | 36 | 100 | 78 |
| KS | 445 | *520 | 380 | 85 | 73 |
| NE | 320 | 350 | 295 | 92 | 84 |
| NM | 30 | 18 | 23 | 77 | 128 |
| OK | 78 | 75 | 53 | 68 | 71 |
| SD | 21 | 26 | 18 | 86 | 69 |
| TX | 620 | 760 | 465 | 75 | 61 |
| WA | 42 | 41 | 28 | 67 | 68 |
| Oth Sts | 35 | 53 | 51 | 146 | 96 |
| US | 1,965 | *2,267 | 1,644 | 84 | 73 |

* Revised.

**Cattle on Feed: Number Placed on Feed by Weight Group, 1,000+ Capacity
Feedlots, by Month, State, and United States, 2001-2002**

| State | During June | | | | | | | | | |
|---------|-------------------|-------------------|-------------------|-------------------|-------------------|-------------------|-------------------|-------------------|-------------------|-------------------|
| | Under 600 | | 600-699 | | 700-799 | | 800 Plus | | Total | |
| | 2001 | 2002 | 2001 | 2002 | 2001 | 2002 | 2001 | 2002 | 2001 | 2002 |
| | <i>1,000 Head</i> | <i>1,000 Head</i> | <i>1,000 Head</i> | <i>1,000 Head</i> | <i>1,000 Head</i> | <i>1,000 Head</i> | <i>1,000 Head</i> | <i>1,000 Head</i> | <i>1,000 Head</i> | <i>1,000 Head</i> |
| CO | 22 | 23 | 27 | 43 | 66 | 48 | 45 | 41 | 160 | 155 |
| KS | 80 | 50 | 110 | 85 | 170 | 155 | 85 | 90 | 445 | 380 |
| NE | 47 | 33 | 65 | 49 | 80 | 85 | 128 | 128 | 320 | 295 |
| TX | 145 | 120 | 175 | 130 | 210 | 145 | 90 | 70 | 620 | 465 |
| Oth Sts | 125 | 115 | 65 | 49 | 105 | 80 | 125 | 105 | 420 | 349 |
| US | 419 | 341 | 442 | 356 | 631 | 513 | 473 | 434 | 1,965 | 1,644 |
| State | During May | | | | | | | | | |
| | Under 600 | | 600-699 | | 700-799 | | 800 Plus | | Total | |
| | 2001 | 2002 | 2001 | 2002 | 2001 | 2002 | 2001 | 2002 | 2001 | 2002 |
| | <i>1,000 Head</i> | <i>1,000 Head</i> | <i>1,000 Head</i> | <i>1,000 Head</i> | <i>1,000 Head</i> | <i>1,000 Head</i> | <i>1,000 Head</i> | <i>1,000 Head</i> | <i>1,000 Head</i> | <i>1,000 Head</i> |
| CO | 24 | 14 | 45 | *41 | 69 | *73 | 52 | *82 | 190 | *210 |
| KS | 80 | 50 | 120 | *100 | 210 | *200 | 120 | *170 | 530 | *520 |
| NE | 60 | 26 | 64 | 47 | 130 | 112 | 121 | 165 | 375 | 350 |
| TX | 205 | 150 | 205 | 205 | 270 | 265 | 130 | 140 | 810 | 760 |
| Oth Sts | 130 | 110 | 75 | 52 | 120 | 110 | 142 | 155 | 467 | 427 |
| US | 499 | 350 | 509 | *445 | 799 | *760 | 565 | *712 | 2,372 | *2,267 |

* Revised.

**Cattle on Feed: Number Marketed, 1,000+ Capacity Feedlots,
by Month, State, and United States 2001-2002**

| State | During Jun 2001 | During May 2002 | During Jun 2002 | | |
|---------|--------------------|--------------------|-------------------|-----------------|----------------|
| | | | Number | as % of 2001 | as % of May |
| | <i>1,000 Head</i> | <i>1,000 Head</i> | <i>1,000 Head</i> | <i>Percent</i> | <i>Percent</i> |
| AZ | 33 | 36 | 31 | 94 | 86 |
| CA | 51 | 63 | 62 | 122 | 98 |
| CO | 205 | *190 | 210 | 102 | 111 |
| ID | 68 | 68 | 58 | 85 | 85 |
| IA | 55 | 55 | 60 | 109 | 109 |
| KS | 485 | 495 | 480 | 99 | 97 |
| NE | 500 | 445 | 460 | 92 | 103 |
| NM | 12 | 17 | 16 | 133 | 94 |
| OK | 60 | 73 | 67 | 112 | 92 |
| SD | 41 | 34 | 47 | 115 | 138 |
| TX | 495 | 580 | 470 | 95 | 81 |
| WA | 58 | 55 | 47 | 81 | 85 |
| Oth Sts | 59 | 60 | 68 | 115 | 113 |
| US | 2,122 | *2,171 | 2,076 | 98 | 96 |

* Revised.

**Cattle on Feed: Other Disappearance, 1,000+ Capacity Feedlots,
by Month, State, and United States 2001-2002 ¹**

| State | During Jun 2001 | During May 2002 | During Jun 2002 | | |
|---------|--------------------|--------------------|-------------------|-----------------|----------------|
| | | | Number | as % of 2001 | as % of May |
| | <i>1,000 Head</i> | <i>1,000 Head</i> | <i>1,000 Head</i> | <i>Percent</i> | <i>Percent</i> |
| AZ | 13 | 1 | 1 | 8 | 100 |
| CA | 6 | 4 | 5 | 83 | 125 |
| CO | 5 | 10 | 5 | 100 | 50 |
| ID | 1 | 1 | 1 | 100 | 100 |
| IA | 1 | 1 | 1 | 100 | 100 |
| KS | 10 | *25 | 10 | 100 | 40 |
| NE | 10 | 15 | 5 | 50 | 33 |
| NM | 1 | 2 | 2 | 200 | 100 |
| OK | 3 | 2 | 1 | 33 | 50 |
| SD | 5 | 2 | 1 | 20 | 50 |
| TX | 15 | 10 | 15 | 100 | 150 |
| WA | 1 | 1 | 1 | 100 | 100 |
| Oth Sts | 6 | 3 | 3 | 50 | 100 |
| US | 77 | *77 | 51 | 66 | 66 |

* Revised.

¹ Includes death loss, movement from feedlots to pasture, and shipments to other feedlots for further feeding.

**Cattle on Feed: Number on Feed by Class, 1,000+ Capacity Feedlots,
by Quarter, State, and United States, 2001-2002**

| State | Steers & Steer Calves | | | Heifers & Heifer Calves | | | Cows and Bulls | | |
|---------|-----------------------|-------------------|-------------------|-------------------------|-------------------|-------------------|-------------------|-------------------|-------------------|
| | Jul 1, 2001 | Apr 1, 2002 | Jul 1, 2002 | Jul 1, 2001 | Apr 1, 2002 | Jul 1, 2002 | Jul 1, 2001 | Apr 1, 2002 | Jul 1, 2002 |
| | <i>1,000 Head</i> | <i>1,000 Head</i> | <i>1,000 Head</i> | <i>1,000 Head</i> | <i>1,000 Head</i> | <i>1,000 Head</i> | <i>1,000 Head</i> | <i>1,000 Head</i> | <i>1,000 Head</i> |
| AZ | 286 | *311 | 286 | 5 | *3 | 5 | 0 | 0 | 0 |
| CA | 410 | 445 | 440 | 60 | 40 | 45 | 0 | 0 | 0 |
| CO | 615 | 645 | 560 | 490 | 470 | 465 | 5 | 5 | 5 |
| ID | 218 | 215 | 204 | 95 | 110 | 94 | 7 | 0 | 2 |
| IA | 225 | 260 | 230 | 119 | 134 | 119 | 1 | 1 | 1 |
| KS | 1,295 | 1,405 | 1,200 | 1,050 | 1,010 | 950 | 5 | 5 | 10 |
| NE | 1,025 | 1,340 | 1,090 | 840 | 940 | 780 | 35 | 20 | 20 |
| NM | 42 | 53 | 53 | 56 | 60 | 48 | 0 | 0 | 0 |
| OK | 220 | 215 | 195 | 170 | 142 | 122 | 0 | 3 | 8 |
| SD | 102 | 118 | 90 | 65 | 100 | 78 | 8 | 2 | 7 |
| TX | 1,665 | 1,775 | 1,735 | 1,330 | 1,120 | 1,110 | 5 | 5 | 5 |
| WA | 156 | 150 | 114 | 71 | 80 | 65 | 0 | 0 | 1 |
| Oth Sts | 235 | 300 | 260 | 95 | 93 | 86 | 5 | 2 | 4 |
| US | 6,494 | *7,232 | 6,457 | 4,446 | *4,302 | 3,967 | 71 | 43 | 63 |

* Revised.

**Cattle on Feed: Total Number on Feed, United States,
July 1, 2000-2002 ¹**

| State | Jul 1, 2000 | Jul 1, 2001 | July 1, 2002 | | |
|-------|-------------------|-------------------|-------------------|-----------------|-----------------|
| | | | Number | as % of 2000 | as % of 2001 |
| | <i>1,000 Head</i> | <i>1,000 Head</i> | <i>1,000 Head</i> | <i>Percent</i> | <i>Percent</i> |
| US | 12,300 | 13,000 | 12,400 | 101 | 95 |

¹ Cattle and calves on feed are animals for slaughter market being fed a ration of grain or other concentrates and are expected to produce a carcass that will grade select or better.

Terms and Definitions of Cattle on Feed Estimates

Cattle on feed are animals being fed a ration of grain, silage, hay and/or protein supplement for slaughter market that are expected to produce a carcass that will grade select or better. It excludes cattle being "backgrounded only" for later sale as feeders or later placement in another feedlot.

Placements are cattle put into a feedlot, fed a ration which will produce a carcass that will grade select or better, and are intended for the slaughter market.

Marketings are cattle shipped out of feedlots to a slaughter market.

Other disappearance includes death loss, movement from feedlots to pasture, and shipments to other feedlots for further feeding.

Reliability of Cattle on Feed Estimates

Survey Procedures: During January and July all known feedlots in the U.S. with capacity of 1,000 or more head are surveyed to provide data for cattle on feed estimates. During the other months, all known feedlots from 17 States are surveyed. The 17 States account for 98 percent of the cattle on feed in feedlots with capacity of 1,000 or more head.

Estimating Procedures: These cattle on feed estimates were prepared by the Agricultural Statistics Board after reviewing recommendations and analysis submitted by each State office. Regional and State survey data were reviewed for reasonableness with each other and with estimates from the previous month when setting the current estimates.

Revision Policy: Revisions to previous estimates are made to improve month to month relationships. Estimates for the previous month are subject to revision in all States each month when current estimates are made. In February, all monthly estimates for the previous year, and the number of feedlots and annual marketings from two years ago are reviewed and subject to revisions. The reviews are primarily based on slaughter data, state check-off or brand data, and any other data that may have been received after the original estimate was made. Estimates will also be reviewed after data from the Census of Agriculture are available. No revisions will be made after that date and estimates become final.

Reliability: Since all 1000+ capacity cattle on feed operators in every State are not included in the monthly survey, survey estimates are subject to sampling variability. Survey results are also subject to non-sampling errors such as omissions, duplications, and mistakes in reporting, recording, and processing the data. The effects of these errors cannot be measured directly. They are minimized through rigid quality controls in the data collection process and through a careful review of all reported data for consistency and reasonableness.

The next "Cattle on Feed" report will be released at 3 p.m. ET on August 16, 2002.

The United States Department of Agriculture (USDA) prohibits discrimination in all its programs on the basis of race, color, national origin, gender, religion, age, disability, political beliefs, sexual orientation, and marital or family status. (Not all prohibited bases apply to all programs.) Persons with disabilities who require alternative means for communication of program information (braille, large print, audiotape, etc.) should contact the USDA's TARGET Center at 202-720-2600 (voice and TDD).

To file a complaint of discrimination, write USDA, Director, Office of Civil Rights, Room 326-W, Whitten Building, 1400 Independence Avenue, SW, Washington, D.C., 20250-9410, or call 202-720-5964 (voice or TDD). USDA is an equal opportunity provider and employer.

ACCESS TO REPORTS!!

For your convenience, there are several ways to obtain NASS reports, data products, and services:

INTERNET ACCESS

All NASS reports are available free of charge on the worldwide Internet. For access, connect to the Internet and go to the NASS Home Page at: <http://www.usda.gov/nass/>. Select "Today's Reports" or Publications and then Reports by Calendar or Publications and then Search, by Title or Subject.

E-MAIL SUBSCRIPTION

There are two options for subscribing via e-mail. All NASS reports are available by subscription free of charge direct to your e-mail address. 1) Starting with the NASS Home Page at <http://www.usda.gov/nass/>, click on **Publications**, then click on the **Subscribe by E-mail** button which takes you to the page describing e-mail delivery of reports. Finally, click on **Go to the Subscription Page** and follow the instructions. 2) If you do NOT have Internet access, send an e-mail message to: usda-reports@usda.mannlib.cornell.edu. In the body of the message type the word: **list**.

AUTOFAX ACCESS

NASSFax service is available for some reports from your fax machine. Please call 202-720-2000, using the handset attached to your fax. Respond to the voice prompts. Document 0411 is a list of available reports.

PRINTED REPORTS OR DATA PRODUCTS

CALL OUR TOLL-FREE ORDER DESK: 800-999-6779 (U.S. and Canada)
Other areas, please call 703-605-6220 FAX: 703-605-6900
(Visa, MasterCard, check, or money order acceptable for payment.)

ASSISTANCE

For **assistance** with general agricultural statistics or further information about NASS or its products or services, contact the **Agricultural Statistics Hotline** at **800-727-9540**, 7:30 a.m. to 4:00 p.m. ET, or e-mail: nass@nass.usda.gov.
