



Cattle on Feed

Released August 16, 2002, by the National Agricultural Statistics Service (NASS), Agricultural Statistics Board, U.S. Department of Agriculture. For information on "Cattle on Feed" call Steve Anderson at (202) 720-3040, office hours 7:30 a.m. to 4:00 p.m. ET.

U.S. Cattle on Feed Down 7 Percent

Cattle and calves on feed for slaughter market in the United States for feedlots with capacity of 1,000 or more head totaled 10.09 million head on August 1, 2002. The inventory was 7 percent below August 1, 2001 and 1 percent below August 1, 2000.

Placements in feedlots during July totaled 1.84 million, 7 percent below 2001 and 4 percent below 2000. Net placements were 1.80 million. During July, placements of cattle and calves weighing less than 600 pounds were 369,000, 600-699 pounds were 365,000, 700-799 pounds were 591,000, and 800 pounds and greater were 515,000.

Marketings of fed cattle during July totaled 2.19 million, 7 percent above 2001 and 5 percent above 2000.

Other disappearance totaled 45,000 during July, 24 percent below 2001 but 2 percent above 2000.

Cattle on Feed in Historic 7 States Down 7 Percent

Cattle on feed August 1, 2002, in the historic 7 States for feedlots with capacity of 1,000 or more head totaled 8.75 million, down 7 percent from the previous year and 1 percent below August 1, 2000.

Placements in feedlots during July totaled 1.62 million, 6 percent below 2001 and 3 percent below 2000.

Marketings during July totaled 1.89 million, 7 percent above 2001 and 6 percent above 2000.

Other disappearance during July was 36,000 head, 29 percent below 2001 and 3 percent below 2000.

**Cattle on Feed: Number on Feed, Placements, Marketings, and
Other Disappearance, 1,000+ Capacity Feedlots,
United States, August 1, 2000-2002**

Item	Number			2002 as % of	
	2000	2001	2002	2000	2001
	<i>1,000 Head</i>	<i>1,000 Head</i>	<i>1,000 Head</i>	<i>Percent</i>	<i>Percent</i>
On Feed Jul 1 ¹	10,399	11,011	10,487	101	95
Placed on Feed During Jul	1,907	1,986	1,840	96	93
Fed Cattle Marketed During Jul	2,082	2,047	2,193	105	107
Other Disappearance During Jul ²	44	59	45	102	76
On Feed Aug 1 ¹	10,180	10,891	10,089	99	93

¹ Cattle and calves on feed are animals for slaughter market being fed a ration of grain or other concentrates and are expected to produce a carcass that will grade select or better.

² Includes death loss, movement from feedlots to pasture, and shipments to other feedlots for further feeding.

**Cattle on Feed: Number on Feed, Placements, Marketings, and
Other Disappearance, 1,000+ Capacity Feedlots,
United States, July 1, 2000-2002**

Item	Number			2002 as % of	
	2000	2001	2002	2000	2001
	<i>1,000 Head</i>	<i>1,000 Head</i>	<i>1,000 Head</i>	<i>Percent</i>	<i>Percent</i>
On Feed Jun 1 ¹	10,967	11,245	10,970	100	98
Placed on Feed During Jun	1,664	1,965	1,644	99	84
Fed Cattle Marketed During Jun	2,175	2,122	2,076	95	98
Other Disappearance During Jun ²	57	77	51	89	66
On Feed Jul 1 ¹	10,399	11,011	10,487	101	95

¹ Cattle and calves on feed are animals for slaughter market being fed a ration of grain or other concentrates and are expected to produce a carcass that will grade select or better.

² Includes death loss, movement from feedlots to pasture, and shipments to other feedlots for further feeding.

**Cattle on Feed: Number on Feed, Placements, Marketings, and
Other Disappearance, 1,000+ Capacity Feedlots,
7 States, August 1, 2000-2002 ¹**

Item	Number			2002 as % of	
	2000	2001	2002	2000	2001
	<i>1,000 Head</i>	<i>1,000 Head</i>	<i>1,000 Head</i>	<i>Percent</i>	<i>Percent</i>
On Feed Jul 1 ²	8,969	9,466	9,056	101	96
Placed on Feed During Jul	1,664	1,730	1,619	97	94
Fed Cattle Marketed During Jul	1,784	1,758	1,889	106	107
Other Disappearance During Jul ³	37	51	36	97	71
On Feed Aug 1 ²	8,812	9,387	8,750	99	93

¹ The 7 States include AZ, CA, CO, IA, KS, NE, and TX.

² Cattle and calves on feed are animals for slaughter market being fed a ration of grain or other concentrates and are expected to produce a carcass that will grade select or better.

³ Includes death loss, movement from feedlots to pasture, and shipments to other feedlots for further feeding.

**Cattle on Feed: Number on Feed, Placements, Marketings, and
Other Disappearance, 1,000+ Capacity Feedlots,
7 States, July 1, 2000-2002 ¹**

Item	Number			2002 as % of	
	2000	2001	2002	2000	2001
	<i>1,000 Head</i>	<i>1,000 Head</i>	<i>1,000 Head</i>	<i>Percent</i>	<i>Percent</i>
On Feed Jun 1 ²	9,441	9,660	9,449	100	98
Placed on Feed During Jun	1,413	1,690	1,422	101	84
Fed Cattle Marketed During Jun	1,848	1,824	1,773	96	97
Other Disappearance During Jun ³	37	60	42	114	70
On Feed Jul 1 ²	8,969	9,466	9,056	101	96

¹ The 7 States include AZ, CA, CO, IA, KS, NE, and TX.

² Cattle and calves on feed are animals for slaughter market being fed a ration of grain or other concentrates and are expected to produce a carcass that will grade select or better.

³ Includes death loss, movement from feedlots to pasture, and shipments to other feedlots for further feeding.

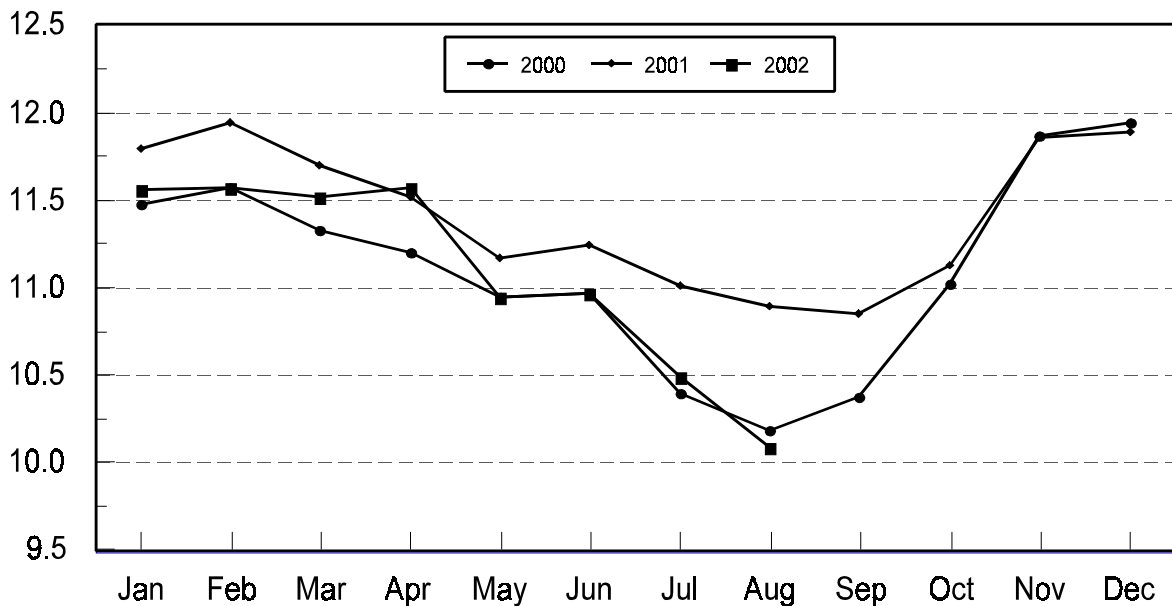
**Cattle on Feed: Number on Feed, 1,000+ Capacity Feedlots,
by Month, State, and United States 2001-2002 ¹**

State	Aug 1, 2001	Jul 1, 2002	Aug 1, 2002		
			Number	as % of 2001	as % of Jul
	<i>1,000 Head</i>	<i>1,000 Head</i>	<i>1,000 Head</i>	<i>Percent</i>	<i>Percent</i>
AZ	297	291	285	96	98
CA	475	485	485	102	100
CO	1,060	1,030	990	93	96
ID	310	300	285	92	95
IA	325	350	320	98	91
KS	2,420	2,160	2,140	88	99
NE	1,810	1,890	1,790	99	95
NM	101	101	109	108	108
OK	390	325	310	79	95
SD	154	175	160	104	91
TX	3,000	2,850	2,740	91	96
WA	229	180	165	72	92
Oth Sts	320	350	310	97	89
US	10,891	10,487	10,089	93	96

¹ Cattle and calves on feed are animals for slaughter market being fed a ration of grain or other concentrates and are expected to produce a carcass that will grade select or better.

**United States Cattle on Feed
1,000+ Capacity Feedlots**

Million Head



**Cattle on Feed: Number Placed on Feed, 1,000+ Capacity Feedlots,
by Month, State, and United States 2001-2002**

State	During Jul 2001	During Jun 2002	During Jul 2002		
			Number	as % of 2001	as % of Jun
	<i>1,000 Head</i>	<i>1,000 Head</i>	<i>1,000 Head</i>	<i>Percent</i>	<i>Percent</i>
AZ	44	24	26	59	108
CA	56	67	59	105	88
CO	195	155	190	97	123
ID	60	49	52	87	106
IA	35	36	44	126	122
KS	570	380	510	89	134
NE	320	295	400	125	136
NM	13	23	18	138	78
OK	68	53	60	88	113
SD	14	18	18	129	100
TX	510	465	390	76	84
WA	61	28	39	64	139
Oth Sts	40	51	34	85	67
US	1,986	1,644	1,840	93	112

**Cattle on Feed: Number Placed on Feed by Weight Group, 1,000+ Capacity
Feedlots, by Month, State, and United States, 2001-2002**

State	During July									
	Under 600		600-699		700-799		800 Plus		Total	
	2001	2002	2001	2002	2001	2002	2001	2002	2001	2002
	<i>1,000 Head</i>	<i>1,000 Head</i>	<i>1,000 Head</i>	<i>1,000 Head</i>	<i>1,000 Head</i>	<i>1,000 Head</i>	<i>1,000 Head</i>	<i>1,000 Head</i>	<i>1,000 Head</i>	<i>1,000 Head</i>
CO	30	28	46	37	67	65	52	60	195	190
KS	85	70	160	110	210	200	115	130	570	510
NE	39	36	58	83	109	121	114	160	320	400
TX	190	120	120	85	140	125	60	60	510	390
Oth Sts	125	115	60	50	80	80	126	105	391	350
US	469	369	444	365	606	591	467	515	1,986	1,840
	During June									
	Under 600		600-699		700-799		800 Plus		Total	
	2001	2002	2001	2002	2001	2002	2001	2002	2001	2002
	<i>1,000 Head</i>	<i>1,000 Head</i>	<i>1,000 Head</i>	<i>1,000 Head</i>	<i>1,000 Head</i>	<i>1,000 Head</i>	<i>1,000 Head</i>	<i>1,000 Head</i>	<i>1,000 Head</i>	<i>1,000 Head</i>
CO	22	23	27	43	66	48	45	41	160	155
KS	80	50	110	85	170	155	85	90	445	380
NE	47	33	65	49	80	85	128	128	320	295
TX	145	120	175	130	210	145	90	70	620	465
Oth Sts	125	115	65	49	105	80	125	105	420	349
US	419	341	442	356	631	513	473	434	1,965	1,644

**Cattle on Feed: Number Marketed, 1,000+ Capacity Feedlots,
by Month, State, and United States 2001-2002**

State	During Jul 2001	During Jun 2002	During Jul 2002		
			Number	as % of 2001	as % of Jun
	<i>1,000 Head</i>	<i>1,000 Head</i>	<i>1,000 Head</i>	<i>Percent</i>	<i>Percent</i>
AZ	36	31	31	86	100
CA	48	62	56	117	90
CO	240	210	225	94	107
ID	69	58	66	96	114
IA	54	60	72	133	120
KS	485	480	520	107	108
NE	400	460	495	124	108
NM	9	16	9	100	56
OK	66	67	74	112	110
SD	34	47	30	88	64
TX	495	470	490	99	104
WA	58	47	53	91	113
Oth Sts	53	68	72	136	106
US	2,047	2,076	2,193	107	106

**Cattle on Feed: Other Disappearance, 1,000+ Capacity Feedlots,
by Month, State, and United States 2001-2002 ¹**

State	During Jul 2001	During Jun 2002	During Jul 2002		
			Number	as % of 2001	as % of Jun
	<i>1,000 Head</i>	<i>1,000 Head</i>	<i>1,000 Head</i>	<i>Percent</i>	<i>Percent</i>
AZ	2	1	1	50	100
CA	3	5	3	100	60
CO	5	5	5	100	100
ID	1	1	1	100	100
IA	1	1	2	200	200
KS	15	10	10	67	100
NE	10	5	5	50	100
NM	1	2	1	100	50
OK	2	1	1	50	100
SD	1	1	3	300	300
TX	15	15	10	67	67
WA	1	1	1	100	100
Oth Sts	2	3	2	100	67
US	59	51	45	76	88

¹ Includes death loss, movement from feedlots to pasture, and shipments to other feedlots for further feeding.

Terms and Definitions of Cattle on Feed Estimates

Cattle on feed are animals being fed a ration of grain, silage, hay and/or protein supplement for slaughter market that are expected to produce a carcass that will grade select or better. It excludes cattle being "backgrounded only" for later sale as feeders or later placement in another feedlot.

Placements are cattle put into a feedlot, fed a ration which will produce a carcass that will grade select or better, and are intended for the slaughter market.

Marketings are cattle shipped out of feedlots to a slaughter market.

Other disappearance includes death loss, movement from feedlots to pasture, and shipments to other feedlots for further feeding.

Reliability of Cattle on Feed Estimates

Survey Procedures: During January and July all known feedlots in the U.S. with capacity of 1,000 or more head are surveyed to provide data for cattle on feed estimates. During the other months, all known feedlots from 17 States are surveyed. The 17 States account for 98 percent of the cattle on feed in feedlots with capacity of 1,000 or more head.

Estimating Procedures: These cattle on feed estimates were prepared by the Agricultural Statistics Board after reviewing recommendations and analysis submitted by each State office. Regional and State survey data were reviewed for reasonableness with each other and with estimates from the previous month when setting the current estimates.

Revision Policy: Revisions to previous estimates are made to improve month to month relationships. Estimates for the previous month are subject to revision in all States each month when current estimates are made. In February, all monthly estimates for the previous year, and the number of feedlots and annual marketings from two years ago are reviewed and subject to revisions. The reviews are primarily based on slaughter data, state check-off or brand data, and any other data that may have been received after the original estimate was made. Estimates will also be reviewed after data from the Census of Agriculture are available. No revisions will be made after that date and estimates become final.

Reliability: Since all 1000+ capacity cattle on feed operators in every State are not included in the monthly survey, survey estimates are subject to sampling variability. Survey results are also subject to non-sampling errors such as omissions, duplications, and mistakes in reporting, recording, and processing the data. The effects of these errors cannot be measured directly. They are minimized through rigid quality controls in the data collection process and through a careful review of all reported data for consistency and reasonableness.

The next "Cattle on Feed" report will be released at 3 p.m. ET on September 20, 2002.

The United States Department of Agriculture (USDA) prohibits discrimination in all its programs on the basis of race, color, national origin, gender, religion, age, disability, political beliefs, sexual orientation, and marital or family status. (Not all prohibited bases apply to all programs.) Persons with disabilities who require alternative means for communication of program information (braille, large print, audiotape, etc.) should contact the USDA's TARGET Center at 202-720-2600 (voice and TDD).

To file a complaint of discrimination, write USDA, Director, Office of Civil Rights, Room 326-W, Whitten Building, 1400 Independence Avenue, SW, Washington, D.C., 20250-9410, or call 202-720-5964 (voice or TDD). USDA is an equal opportunity provider and employer.

ACCESS TO REPORTS!!

For your convenience, there are several ways to obtain NASS reports, data products, and services:

INTERNET ACCESS

All NASS reports are available free of charge on the worldwide Internet. For access, connect to the Internet and go to the NASS Home Page at: <http://www.usda.gov/nass/>. Select "Today's Reports" or Publications and then Reports Calendar or Publications and then Search, by Title or Subject.

E-MAIL SUBSCRIPTION

There are two options for subscribing via e-mail. All NASS reports are available by subscription free of charge direct to your e-mail address. 1) Starting with the NASS Home Page at <http://www.usda.gov/nass/>, click on **Publications**, then click on the **Subscribe by E-mail** button which takes you to the page describing e-mail delivery of reports. Finally, click on **Go to the Subscription Page** and follow the instructions. 2) If you do NOT have Internet access, send an e-mail message to: usda-reports@usda.mannlib.cornell.edu. In the body of the message type the word: **list**.

AUTOFAX ACCESS

NASSFax service is available for some reports from your fax machine. Please call 202-720-2000, using the handset attached to your fax. Respond to the voice prompts. Document 0411 is a list of available reports.

PRINTED REPORTS OR DATA PRODUCTS

CALL OUR TOLL-FREE ORDER DESK: 800-999-6779 (U.S. and Canada)
Other areas, please call 703-605-6220 FAX: 703-605-6900
(Visa, MasterCard, check, or money order acceptable for payment.)

ASSISTANCE

For **assistance** with general agricultural statistics or further information about NASS or its products or services, contact the **Agricultural Statistics Hotline** at **800-727-9540**, 7:30 a.m. to 4:00 p.m. ET, or e-mail: nass@nass.usda.gov.

**USDA Data Users' Forum
October 21, 2002
Holiday Inn Mart Plaza
Chicago, Illinois**

The USDA's National Agricultural Statistics Service will hold a public forum for open exchange between Federal agricultural statistics agencies and data users on October 21, 2002. Agency representatives will provide updates on pending changes in the various statistical and information programs and will seek comments from data users. The USDA's Agricultural Marketing Service, Economic Research Service, Foreign Agricultural Service, and World Agricultural Outlook Board, as well as the U.S. Census Bureau's Foreign Trade Division, will also participate in the forum.

For registration details or additional information about the Data Users' Forum, see the NASS homepage at www.usda.gov/nass/ or contact Karlyn McCutcheon of NASS at (202) 690-8141 or at karlyn_mccutcheon@nass.usda.gov.

This Data Users' Forum precedes an Industry Outlook Meeting that will be held at the same location on October 22, 2002. The outlook meeting brings together analysts from various commodity sectors to discuss the outlook situation. For more information about the outlook meeting and to register for it, contact Terry Francl of the American Farm Bureau Federation at (847) 685-8769 or at terry@fb.org.