



# Cattle on Feed

---

Released September 20, 2002, by the National Agricultural Statistics Service (NASS), Agricultural Statistics Board, U.S. Department of Agriculture. For information on "Cattle on Feed" call Steve Anderson at (202) 720-3040, office hours 7:30 a.m. to 4:00 p.m. ET.

## U.S. Cattle on Feed Down 7 Percent

**Cattle and calves on feed** for slaughter market in the United States for feedlots with capacity of 1,000 or more head totaled 10.13 million head on September 1, 2002. The inventory was 7 percent below September 1, 2001 and 2 percent below September 1, 2000.

**Placements** in feedlots during August totaled 2.22 million, 1 percent above 2001 but 9 percent below 2000. Net placements were 2.18 million. During August, placements of cattle and calves weighing less than 600 pounds were 525,000, 600-699 pounds were 483,000, 700-799 pounds were 625,000, and 800 pounds and greater were 585,000.

**Marketings** of fed cattle during August totaled 2.14 million, 2 percent below 2001 and 3 percent below 2000.

**Other disappearance** totaled 43,000 during August, 20 percent below 2001 and 12 percent below 2000.

## Cattle on Feed in Historic 7 States Down 6 Percent

**Cattle on feed** September 1, 2002, in the historic 7 States for feedlots with capacity of 1,000 or more head totaled 8.85 million, down 6 percent from the previous year and 1 percent below September 1, 2000.

**Placements** in feedlots during August totaled 1.94 million, 2 percent above 2001 but 7 percent below 2000.

**Marketings** during August totaled 1.81 million, 3 percent below 2001 and 5 percent below 2000.

**Other disappearance** during August was 35,000 head, 24 percent below 2001 and 3 percent below 2000.

**Cattle on Feed: Number on Feed, Placements, Marketings, and  
Other Disappearance, 1,000+ Capacity Feedlots,  
United States, September 1, 2000-2002**

Item	Number			2002 as % of	
	2000	2001	2002	2000	2001
	<i>1,000 Head</i>	<i>1,000 Head</i>	<i>1,000 Head</i>	<i>Percent</i>	<i>Percent</i>
On Feed Aug 1 <sup>1</sup>	10,180	10,891	10,089	99	93
Placed on Feed During Aug	2,440	2,204	2,218	91	101
Fed Cattle Marketed During Aug	2,197	2,186	2,135	97	98
Other Disappearance During Aug <sup>2</sup>	49	54	43	88	80
On Feed Sep 1 <sup>1</sup>	10,374	10,855	10,129	98	93

<sup>1</sup> Cattle and calves on feed are animals for slaughter market being fed a ration of grain or other concentrates and are expected to produce a carcass that will grade select or better.

<sup>2</sup> Includes death loss, movement from feedlots to pasture, and shipments to other feedlots for further feeding.

**Cattle on Feed: Number on Feed, Placements, Marketings, and  
Other Disappearance, 1,000+ Capacity Feedlots,  
United States, August 1, 2000-2002**

Item	Number			2002 as % of	
	2000	2001	2002	2000	2001
	<i>1,000 Head</i>	<i>1,000 Head</i>	<i>1,000 Head</i>	<i>Percent</i>	<i>Percent</i>
On Feed Jul 1 <sup>1</sup>	10,399	11,011	10,487	101	95
Placed on Feed During Jul	1,907	1,986	1,840	96	93
Fed Cattle Marketed During Jul	2,082	2,047	2,193	105	107
Other Disappearance During Jul <sup>2</sup>	44	59	45	102	76
On Feed Aug 1 <sup>1</sup>	10,180	10,891	10,089	99	93

<sup>1</sup> Cattle and calves on feed are animals for slaughter market being fed a ration of grain or other concentrates and are expected to produce a carcass that will grade select or better.

<sup>2</sup> Includes death loss, movement from feedlots to pasture, and shipments to other feedlots for further feeding.

**Cattle on Feed: Number on Feed, Placements, Marketings, and  
Other Disappearance, 1,000+ Capacity Feedlots,  
7 States, September 1, 2000-2002 <sup>1</sup>**

Item	Number			2002 as % of	
	2000	2001	2002	2000	2001
	<i>1,000 Head</i>	<i>1,000 Head</i>	<i>1,000 Head</i>	<i>Percent</i>	<i>Percent</i>
On Feed Aug 1 <sup>2</sup>	8,812	9,387	8,750	99	93
Placed on Feed During Aug	2,091	1,906	1,936	93	102
Fed Cattle Marketed During Aug	1,895	1,864	1,806	95	97
Other Disappearance During Aug <sup>3</sup>	36	46	35	97	76
On Feed Sep 1 <sup>2</sup>	8,972	9,383	8,845	99	94

<sup>1</sup> The 7 States include AZ, CA, CO, IA, KS, NE, and TX.

<sup>2</sup> Cattle and calves on feed are animals for slaughter market being fed a ration of grain or other concentrates and are expected to produce a carcass that will grade select or better.

<sup>3</sup> Includes death loss, movement from feedlots to pasture, and shipments to other feedlots for further feeding.

**Cattle on Feed: Number on Feed, Placements, Marketings, and  
Other Disappearance, 1,000+ Capacity Feedlots,  
7 States, August 1, 2000-2002 <sup>1</sup>**

Item	Number			2002 as % of	
	2000	2001	2002	2000	2001
	<i>1,000 Head</i>	<i>1,000 Head</i>	<i>1,000 Head</i>	<i>Percent</i>	<i>Percent</i>
On Feed Jul 1 <sup>2</sup>	8,969	9,466	9,056	101	96
Placed on Feed During Jul	1,664	1,730	1,619	97	94
Fed Cattle Marketed During Jul	1,784	1,758	1,889	106	107
Other Disappearance During Jul <sup>3</sup>	37	51	36	97	71
On Feed Aug 1 <sup>2</sup>	8,812	9,387	8,750	99	93

<sup>1</sup> The 7 States include AZ, CA, CO, IA, KS, NE, and TX.

<sup>2</sup> Cattle and calves on feed are animals for slaughter market being fed a ration of grain or other concentrates and are expected to produce a carcass that will grade select or better.

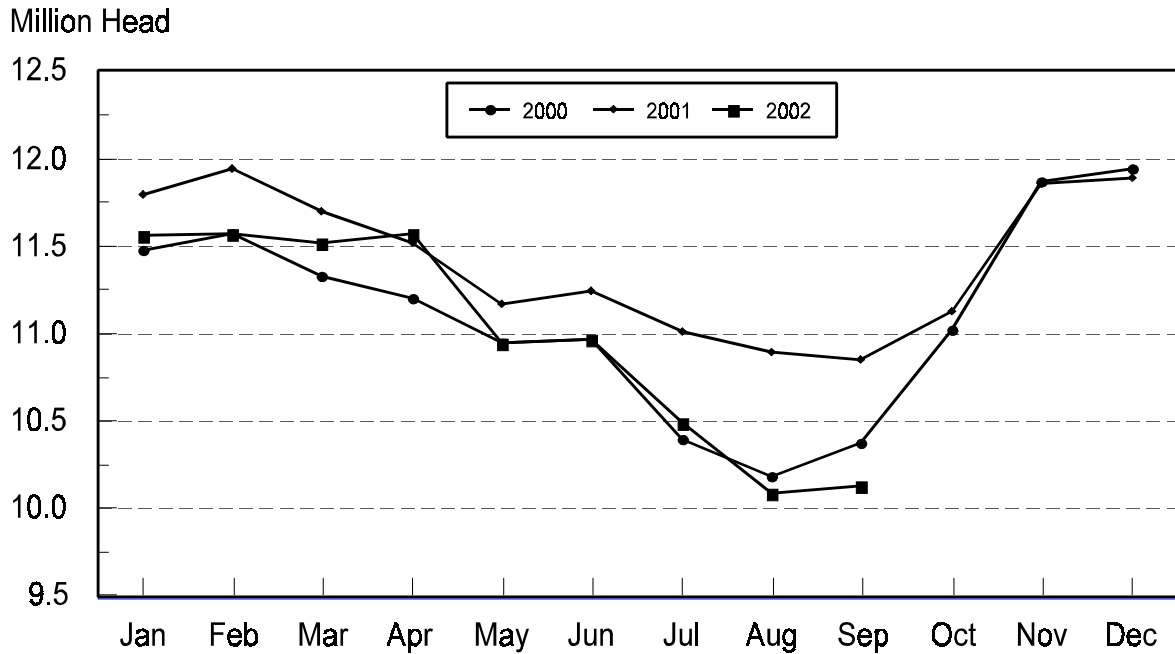
<sup>3</sup> Includes death loss, movement from feedlots to pasture, and shipments to other feedlots for further feeding.

**Cattle on Feed: Number on Feed, 1,000+ Capacity Feedlots,  
by Month, State, and United States 2001-2002 <sup>1</sup>**

State	Sep 1, 2001	Aug 1, 2002	Sep 1, 2002		
			Number	as % of 2001	as % of Aug
	<i>1,000 Head</i>	<i>1,000 Head</i>	<i>1,000 Head</i>	<i>Percent</i>	<i>Percent</i>
AZ	293	285	285	97	100
CA	470	485	490	104	101
CO	1,010	990	1,000	99	101
ID	305	285	275	90	96
IA	310	320	310	100	97
KS	2,490	2,140	2,230	90	104
NE	1,820	1,790	1,850	102	103
NM	96	109	114	119	105
OK	395	310	305	77	98
SD	140	160	145	104	91
TX	2,990	2,740	2,680	90	98
WA	231	165	155	67	94
Oth Sts	305	310	290	95	94
US	10,855	10,089	10,129	93	100

<sup>1</sup> Cattle and calves on feed are animals for slaughter market being fed a ration of grain or other concentrates and are expected to produce a carcass that will grade select or better.

**United States Cattle on Feed  
1,000+ Capacity Feedlots**



**Cattle on Feed: Number Placed on Feed, 1,000+ Capacity Feedlots,  
by Month, State, and United States 2001-2002**

State	During Aug 2001	During Jul 2002	During Aug 2002		
			Number	as % of 2001	as % of Jul
	<i>1,000 Head</i>	<i>1,000 Head</i>	<i>1,000 Head</i>	<i>Percent</i>	<i>Percent</i>
AZ	32	26	30	94	115
CA	50	59	60	120	102
CO	210	190	245	117	129
ID	70	52	58	83	112
IA	39	44	56	144	127
KS	570	510	570	100	112
NE	435	400	445	102	111
NM	12	18	22	183	122
OK	78	60	74	95	123
SD	21	18	24	114	133
TX	570	390	530	93	136
WA	61	39	40	66	103
Oth Sts	56	34	64	114	188
US	2,204	1,840	2,218	101	121

**Cattle on Feed: Number Placed on Feed by Weight Group, 1,000+ Capacity  
Feedlots, by Month, State, and United States, 2001-2002**

State	During August									
	Under 600		600-699		700-799		800 Plus		Total	
	2001	2002	2001	2002	2001	2002	2001	2002	2001	2002
	<i>1,000 Head</i>	<i>1,000 Head</i>	<i>1,000 Head</i>	<i>1,000 Head</i>	<i>1,000 Head</i>	<i>1,000 Head</i>	<i>1,000 Head</i>	<i>1,000 Head</i>	<i>1,000 Head</i>	<i>1,000 Head</i>
CO	29	35	38	46	73	87	70	77	210	245
KS	95	110	145	140	220	195	110	125	570	570
NE	51	75	60	69	144	123	180	178	435	445
TX	220	175	165	160	125	125	60	70	570	530
Oth Sts	115	130	64	68	105	95	135	135	419	428
US	510	525	472	483	667	625	555	585	2,204	2,218
	During July									
	Under 600		600-699		700-799		800 Plus		Total	
	2001	2002	2001	2002	2001	2002	2001	2002	2001	2002
	<i>1,000 Head</i>	<i>1,000 Head</i>	<i>1,000 Head</i>	<i>1,000 Head</i>	<i>1,000 Head</i>	<i>1,000 Head</i>	<i>1,000 Head</i>	<i>1,000 Head</i>	<i>1,000 Head</i>	<i>1,000 Head</i>
CO	30	28	46	37	67	65	52	60	195	190
KS	85	70	160	110	210	200	115	130	570	510
NE	39	36	58	83	109	121	114	160	320	400
TX	190	120	120	85	140	125	60	60	510	390
Oth Sts	125	115	60	50	80	80	126	105	391	350
US	469	369	444	365	606	591	467	515	1,986	1,840

**Cattle on Feed: Number Marketed, 1,000+ Capacity Feedlots,  
by Month, State, and United States 2001-2002**

State	During Aug 2001	During Jul 2002	During Aug 2002		
			Number	as % of 2001	as % of Jul
	<i>1,000 Head</i>	<i>1,000 Head</i>	<i>1,000 Head</i>	<i>Percent</i>	<i>Percent</i>
AZ	34	31	29	85	94
CA	52	56	52	100	93
CO	255	225	230	90	102
ID	74	66	67	91	102
IA	53	72	65	123	90
KS	490	520	470	96	90
NE	420	495	380	90	77
NM	15	9	15	100	167
OK	71	74	78	110	105
SD	34	30	38	112	127
TX	560	490	580	104	118
WA	58	53	49	84	92
Oth Sts	70	72	82	117	114
US	2,186	2,193	2,135	98	97

**Cattle on Feed: Other Disappearance, 1,000+ Capacity Feedlots,  
by Month, State, and United States 2001-2002 <sup>1</sup>**

State	During Aug 2001	During Jul 2002	During Aug 2002		
			Number	as % of 2001	as % of Jul
	<i>1,000 Head</i>	<i>1,000 Head</i>	<i>1,000 Head</i>	<i>Percent</i>	<i>Percent</i>
AZ	2	1	1	50	100
CA	3	3	3	100	100
CO	5	5	5	100	100
ID	1	1	1	100	100
IA	1	2	1	100	50
KS	10	10	10	100	100
NE	5	5	5	100	100
NM	2	1	2	100	200
OK	2	1	1	50	100
SD	1	3	1	100	33
TX	20	10	10	50	100
WA	1	1	1	100	100
Oth Sts	1	2	2	200	100
US	54	45	43	80	96

<sup>1</sup> Includes death loss, movement from feedlots to pasture, and shipments to other feedlots for further feeding.

## Terms and Definitions of Cattle on Feed Estimates

**Cattle on feed** are animals being fed a ration of grain, silage, hay and/or protein supplement for slaughter market that are expected to produce a carcass that will grade select or better. It excludes cattle being "backgrounded only" for later sale as feeders or later placement in another feedlot.

**Placements** are cattle put into a feedlot, fed a ration which will produce a carcass that will grade select or better, and are intended for the slaughter market.

**Marketings** are cattle shipped out of feedlots to a slaughter market.

**Other disappearance** includes death loss, movement from feedlots to pasture, and shipments to other feedlots for further feeding.

## Reliability of Cattle on Feed Estimates

**Survey Procedures:** During January and July all known feedlots in the U.S. with capacity of 1,000 or more head are surveyed to provide data for cattle on feed estimates. During the other months, all known feedlots from 17 States are surveyed. The 17 States account for 98 percent of the cattle on feed in feedlots with capacity of 1,000 or more head.

**Estimating Procedures:** These cattle on feed estimates were prepared by the Agricultural Statistics Board after reviewing recommendations and analysis submitted by each State office. Regional and State survey data were reviewed for reasonableness with each other and with estimates from the previous month when setting the current estimates.

**Revision Policy:** Revisions to previous estimates are made to improve month to month relationships. Estimates for the previous month are subject to revision in all States each month when current estimates are made. In February, all monthly estimates for the previous year, and the number of feedlots and annual marketings from two years ago are reviewed and subject to revisions. The reviews are primarily based on slaughter data, state check-off or brand data, and any other data that may have been received after the original estimate was made. Estimates will also be reviewed after data from the Census of Agriculture are available. No revisions will be made after that date and estimates become final.

**Reliability:** Since all 1000+ capacity cattle on feed operators in every State are not included in the monthly survey, survey estimates are subject to sampling variability. Survey results are also subject to non-sampling errors such as omissions, duplications, and mistakes in reporting, recording, and processing the data. The effects of these errors cannot be measured directly. They are minimized through rigid quality controls in the data collection process and through a careful review of all reported data for consistency and reasonableness.

The next "Cattle on Feed" report will be released at 3 p.m. ET on October 18, 2002.

The United States Department of Agriculture (USDA) prohibits discrimination in all its programs on the basis of race, color, national origin, gender, religion, age, disability, political beliefs, sexual orientation, and marital or family status. (Not all prohibited bases apply to all programs.) Persons with disabilities who require alternative means for communication of program information (braille, large print, audiotape, etc.) should contact the USDA's TARGET Center at 202-720-2600 (voice and TDD).

To file a complaint of discrimination, write USDA, Director, Office of Civil Rights, Room 326-W, Whitten Building, 1400 Independence Avenue, SW, Washington, D.C., 20250-9410, or call 202-720-5964 (voice or TDD). USDA is an equal opportunity provider and employer.

## **ACCESS TO REPORTS!!**

---

For your convenience, there are several ways to obtain NASS reports, data products, and services:

### **INTERNET ACCESS**

All NASS reports are available free of charge on the worldwide Internet. For access, connect to the Internet and go to the NASS Home Page at: <http://www.usda.gov/nass/>. Select "Today's Reports" or Publications and then Reports Calendar or Publications and then Search, by Title or Subject.

### **E-MAIL SUBSCRIPTION**

There are two options for subscribing via e-mail. All NASS reports are available by subscription free of charge direct to your e-mail address. 1) Starting with the NASS Home Page at <http://www.usda.gov/nass/>, click on **Publications**, then click on the **Subscribe by E-mail** button which takes you to the page describing e-mail delivery of reports. Finally, click on **Go to the Subscription Page** and follow the instructions. 2) If you do NOT have Internet access, send an e-mail message to: [usda-reports@usda.mannlib.cornell.edu](mailto:usda-reports@usda.mannlib.cornell.edu). In the body of the message type the word: **list**.

### **AUTOFAX ACCESS**

NASSFax service is available for some reports from your fax machine. Please call 202-720-2000, using the handset attached to your fax. Respond to the voice prompts. Document 0411 is a list of available reports.

-----  
**PRINTED REPORTS OR DATA PRODUCTS**

**CALL OUR TOLL-FREE ORDER DESK: 800-999-6779 (U.S. and Canada)**  
**Other areas, please call 703-605-6220      FAX: 703-605-6900**  
**(Visa, MasterCard, check, or money order acceptable for payment.)**  
-----

### **ASSISTANCE**

For **assistance** with general agricultural statistics or further information about NASS or its products or services, contact the **Agricultural Statistics Hotline** at **800-727-9540**, 7:30 a.m. to 4:00 p.m. ET, or e-mail: [nass@nass.usda.gov](mailto:nass@nass.usda.gov).

---



**USDA Data Users' Forum  
October 21, 2002  
Holiday Inn Mart Plaza  
Chicago, Illinois**

**The USDA's National Agricultural Statistics Service will hold a public forum for open exchange between Federal agricultural statistics agencies and data users on October 21, 2002. Agency representatives will provide updates on pending changes in the various statistical and information programs and will seek comments from data users. The USDA's Agricultural Marketing Service, Economic Research Service, Foreign Agricultural Service, and World Agricultural Outlook Board, as well as the U.S. Census Bureau's Foreign Trade Division, will also participate in the forum.**

**For registration details or additional information about the Data Users' Forum, see the NASS homepage at [www.usda.gov/nass/](http://www.usda.gov/nass/) or contact Karlyn McCutcheon of NASS at (202) 690-8141 or at [karlyn\\_mccutcheon@nass.usda.gov](mailto:karlyn_mccutcheon@nass.usda.gov).**

**This Data Users' Forum precedes an Industry Outlook Meeting that will be held at the same location on October 22, 2002. The outlook meeting brings together analysts from various commodity sectors to discuss the outlook situation. For more information about the outlook meeting and to register for it, contact Terry Francl of the American Farm Bureau Federation at (847) 685-8769 or at [terry@fb.org](mailto:terry@fb.org).**