



Cattle on Feed

Released October 18, 2002, by the National Agricultural Statistics Service (NASS), Agricultural Statistics Board, U.S. Department of Agriculture. For information on "Cattle on Feed" call Steve Anderson at (202) 720-3040, office hours 7:30 a.m. to 4:00 p.m. ET.

U.S. Cattle on Feed Down 6 Percent

Cattle and calves on feed for slaughter market in the United States for feedlots with capacity of 1,000 or more head totaled 10.4 million head on October 1, 2002. The inventory was 6 percent below October 1, 2001 and 5 percent below October 1, 2000. The inventory included 6.26 million steers and steer calves, down 6 percent from the previous year. This group accounted for 60 percent of the total inventory. Heifers and heifer calves accounted for 4.08 million head, down 8 percent from 2001.

Placements in feedlots during September totaled 2.19 million, 2 percent above 2001 but 19 percent below 2000. Net placements were 2.14 million. During September, placements of cattle and calves weighing less than 600 pounds were 614,000, 600-699 pounds were 487,000, 700-799 pounds were 582,000, and 800 pounds and greater were 505,000.

Marketings of fed cattle during September totaled 1.85 million, 1 percent above 2001 but 7 percent below 2000.

Other disappearance totaled 53,000 during September, 15 percent above 2001 but 2 percent below 2000.

Cattle on Feed in Historic 7 States Down 5 Percent

Cattle on feed October 1, 2002, in the historic 7 States for feedlots with capacity of 1,000 or more head totaled 9.09 million, down 5 percent from the previous year and 4 percent below October 1, 2000. The inventory included 5.41 million steers and steer calves, down 5 percent from the previous year. This group accounted for 60 percent of the total inventory. Heifers and heifer calves accounted for 3.62 million head, down 7 percent from 2001.

Placements in feedlots during September totaled 1.85 million, 2 percent above 2001 but 19 percent below 2000.

Marketings during September totaled 1.57 million, 2 percent above 2001 but 8 percent below 2000.

Other disappearance during September was 45,000 head, 13 percent above 2001 but 6 percent below 2000.

**Cattle on Feed: Number on Feed, Placements, Marketings, and
Other Disappearance, 1,000+ Capacity Feedlots,
United States, October 1, 2000-2002**

Item	Number			2002 as % of	
	2000	2001	2002	2000	2001
	<i>1,000 Head</i>	<i>1,000 Head</i>	<i>1,000 Head</i>	<i>Percent</i>	<i>Percent</i>
On Feed Sep 1 ¹	10,374	10,855	10,129	98	93
Placed on Feed During Sep	2,686	2,141	2,188	81	102
Fed Cattle Marketed During Sep	1,990	1,825	1,848	93	101
Other Disappearance During Sep ²	54	46	53	98	115
On Feed Oct 1 ¹	11,016	11,125	10,416	95	94

¹ Cattle and calves on feed are animals for slaughter market being fed a ration of grain or other concentrates and are expected to produce a carcass that will grade select or better.

² Includes death loss, movement from feedlots to pasture, and shipments to other feedlots for further feeding.

**Cattle on Feed: Number on Feed, Placements, Marketings, and
Other Disappearance, 1,000+ Capacity Feedlots,
United States, September 1, 2000-2002**

Item	Number			2002 as % of	
	2000	2001	2002	2000	2001
	<i>1,000 Head</i>	<i>1,000 Head</i>	<i>1,000 Head</i>	<i>Percent</i>	<i>Percent</i>
On Feed Aug 1 ¹	10,180	10,891	10,089	99	93
Placed on Feed During Aug	2,440	2,204	2,218	91	101
Fed Cattle Marketed During Aug	2,197	2,186	2,135	97	98
Other Disappearance During Aug ²	49	54	43	88	80
On Feed Sep 1 ¹	10,374	10,855	10,129	98	93

¹ Cattle and calves on feed are animals for slaughter market being fed a ration of grain or other concentrates and are expected to produce a carcass that will grade select or better.

² Includes death loss, movement from feedlots to pasture, and shipments to other feedlots for further feeding.

**Cattle on Feed: Number on Feed by Class, 1,000+ Capacity Feedlots,
United States, October 1, 2000-2002**

Item	Number			2002 as % of	
	2000	2001	2002	2000	2001
	<i>1,000 Head</i>	<i>1,000 Head</i>	<i>1,000 Head</i>	<i>Percent</i>	<i>Percent</i>
Class on Feed Oct 1					
Steers and Steer Calves	6,562	6,627	6,258	95	94
Heifers and Heifer Calves	4,401	4,447	4,084	93	92
Cows and Bulls	53	51	74	140	145

**Cattle on Feed: Number on Feed, Placements, Marketings, and
Other Disappearance, 1,000+ Capacity Feedlots,
7 States, October 1, 2000-2002 ¹**

Item	Number			2002 as % of	
	2000	2001	2002	2000	2001
	<i>1,000 Head</i>	<i>1,000 Head</i>	<i>1,000 Head</i>	<i>Percent</i>	<i>Percent</i>
On Feed Sep 1 ²	8,972	9,383	8,845	99	94
Placed on Feed During Sep	2,286	1,811	1,853	81	102
Fed Cattle Marketed During Sep	1,708	1,541	1,565	92	102
Other Disappearance During Sep ³	48	40	45	94	113
On Feed Oct 1 ²	9,502	9,613	9,088	96	95

¹ The 7 States include AZ, CA, CO, IA, KS, NE, and TX.

² Cattle and calves on feed are animals for slaughter market being fed a ration of grain or other concentrates and are expected to produce a carcass that will grade select or better.

³ Includes death loss, movement from feedlots to pasture, and shipments to other feedlots for further feeding.

**Cattle on Feed: Number on Feed, Placements, Marketings, and
Other Disappearance, 1,000+ Capacity Feedlots,
7 States, September 1, 2000-2002 ¹**

Item	Number			2002 as % of	
	2000	2001	2002	2000	2001
	<i>1,000 Head</i>	<i>1,000 Head</i>	<i>1,000 Head</i>	<i>Percent</i>	<i>Percent</i>
On Feed Aug 1 ²	8,812	9,387	8,750	99	93
Placed on Feed During Aug	2,091	1,906	1,936	93	102
Fed Cattle Marketed During Aug	1,895	1,864	1,806	95	97
Other Disappearance During Aug ³	36	46	35	97	76
On Feed Sep 1 ²	8,972	9,383	8,845	99	94

¹ The 7 States include AZ, CA, CO, IA, KS, NE, and TX.

² Cattle and calves on feed are animals for slaughter market being fed a ration of grain or other concentrates and are expected to produce a carcass that will grade select or better.

³ Includes death loss, movement from feedlots to pasture, and shipments to other feedlots for further feeding.

**Cattle on Feed: Number on Feed by Class, 1,000+ Capacity Feedlots,
7 States, October 1, 2000-2002 ¹**

Item	Number			2002 as % of	
	2000	2001	2002	2000	2001
	<i>1,000 Head</i>	<i>1,000 Head</i>	<i>1,000 Head</i>	<i>Percent</i>	<i>Percent</i>
Class on Feed Oct 1					
Steers and Steer Calves	5,584	5,690	5,411	97	95
Heifers and Heifer Calves	3,877	3,882	3,616	93	93
Cows and Bulls	41	41	61	149	149

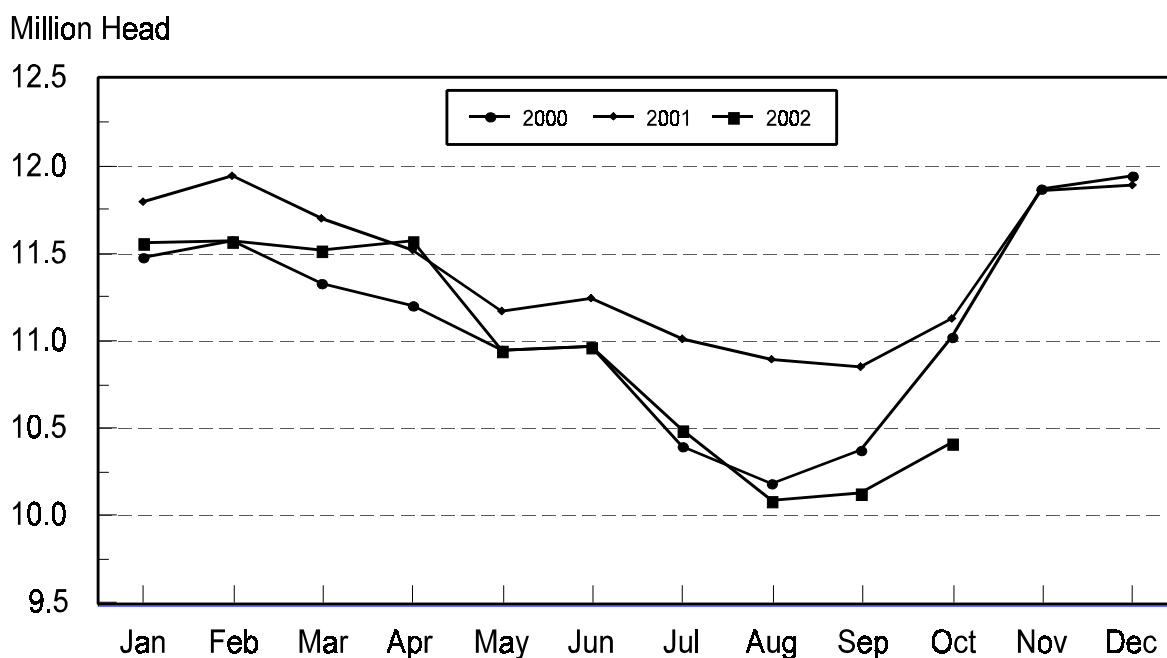
¹ The 7 States include AZ, CA, CO, IA, KS, NE, and TX.

**Cattle on Feed: Number on Feed, 1,000+ Capacity Feedlots,
by Month, State, and United States 2001-2002 ¹**

State	Oct 1, 2001	Sep 1, 2002	Oct 1, 2002		
			Number	as % of 2001	as % of Sep
	<i>1,000 Head</i>	<i>1,000 Head</i>	<i>1,000 Head</i>	<i>Percent</i>	<i>Percent</i>
AZ	298	285	288	97	101
CA	465	490	495	106	101
CO	1,060	1,000	1,030	97	103
ID	310	275	280	90	102
IA	310	310	315	102	102
KS	2,540	2,230	2,280	90	102
NE	1,950	1,850	1,960	101	106
NM	97	114	113	116	99
OK	390	305	330	85	108
SD	136	145	150	110	103
TX	2,990	2,680	2,720	91	101
WA	244	155	170	70	110
Oth Sts	335	290	285	85	98
US	11,125	10,129	10,416	94	103

¹ Cattle and calves on feed are animals for slaughter market being fed a ration of grain or other concentrates and are expected to produce a carcass that will grade select or better.

**United States Cattle on Feed
1,000+ Capacity Feedlots**



**Cattle on Feed: Number Placed on Feed, 1,000+ Capacity Feedlots,
by Month, State, and United States 2001-2002**

State	During Sep 2001	During Aug 2002	During Sep 2002		
			Number	as % of 2001	as % of Aug
	<i>1,000 Head</i>	<i>1,000 Head</i>	<i>1,000 Head</i>	<i>Percent</i>	<i>Percent</i>
AZ	33	30	30	91	100
CA	47	60	60	128	100
CO	265	245	255	96	104
ID	72	58	69	96	119
IA	66	56	68	103	121
KS	470	570	460	98	81
NE	450	445	450	100	101
NM	13	22	20	154	91
OK	68	74	83	122	112
SD	35	24	49	140	204
TX	480	530	530	110	100
WA	59	40	42	71	105
Oth Sts	83	64	72	87	113
US	2,141	2,218	2,188	102	99

**Cattle on Feed: Number Placed on Feed by Weight Group, 1,000+ Capacity
Feedlots, by Month, State, and United States, 2001-2002**

State	During September									
	Under 600		600-699		700-799		800 Plus		Total	
	2001	2002	2001	2002	2001	2002	2001	2002	2001	2002
	<i>1,000 Head</i>	<i>1,000 Head</i>	<i>1,000 Head</i>	<i>1,000 Head</i>	<i>1,000 Head</i>	<i>1,000 Head</i>	<i>1,000 Head</i>	<i>1,000 Head</i>	<i>1,000 Head</i>	<i>1,000 Head</i>
CO	28	51	40	53	81	78	116	73	265	255
KS	110	105	115	125	145	140	100	90	470	460
NE	75	133	68	74	139	106	168	137	450	450
TX	185	170	150	155	100	145	45	60	480	530
Oth Sts	130	155	75	80	96	113	175	145	476	493
US	528	614	448	487	561	582	604	505	2,141	2,188
	During August									
	Under 600		600-699		700-799		800 Plus		Total	
	2001	2002	2001	2002	2001	2002	2001	2002	2001	2002
	<i>1,000 Head</i>	<i>1,000 Head</i>	<i>1,000 Head</i>	<i>1,000 Head</i>	<i>1,000 Head</i>	<i>1,000 Head</i>	<i>1,000 Head</i>	<i>1,000 Head</i>	<i>1,000 Head</i>	<i>1,000 Head</i>
CO	29	35	38	46	73	87	70	77	210	245
KS	95	110	145	140	220	195	110	125	570	570
NE	51	75	60	69	144	123	180	178	435	445
TX	220	175	165	160	125	125	60	70	570	530
Oth Sts	115	130	64	68	105	95	135	135	419	428
US	510	525	472	483	667	625	555	585	2,204	2,218

**Cattle on Feed: Number Marketed, 1,000+ Capacity Feedlots,
by Month, State, and United States 2001-2002**

State	During Sep 2001	During Aug 2002	During Sep 2002		
			Number	as % of 2001	as % of Aug
	<i>1,000 Head</i>	<i>1,000 Head</i>	<i>1,000 Head</i>	<i>Percent</i>	<i>Percent</i>
AZ	27	29	26	96	90
CA	49	52	52	106	100
CO	210	230	220	105	96
ID	66	67	63	95	94
IA	65	65	62	95	95
KS	410	470	400	98	85
NE	315	380	335	106	88
NM	11	15	18	164	120
OK	71	78	57	80	73
SD	39	38	43	110	113
TX	465	580	470	101	81
WA	45	49	26	58	53
Oth Sts	52	82	76	146	93
US	1,825	2,135	1,848	101	87

**Cattle on Feed: Other Disappearance, 1,000+ Capacity Feedlots,
by Month, State, and United States 2001-2002 ¹**

State	During Sep 2001	During Aug 2002	During Sep 2002		
			Number	as % of 2001	as % of Aug
	<i>1,000 Head</i>	<i>1,000 Head</i>	<i>1,000 Head</i>	<i>Percent</i>	<i>Percent</i>
AZ	1	1	1	100	100
CA	3	3	3	100	100
CO	5	5	5	100	100
ID	1	1	1	100	100
IA	1	1	1	100	100
KS	10	10	10	100	100
NE	5	5	5	100	100
NM	1	2	3	300	150
OK	2	1	1	50	100
SD	0	1	1		100
TX	15	10	20	133	200
WA	1	1	1	100	100
Oth Sts	1	2	1	100	50
US	46	43	53	115	123

¹ Includes death loss, movement from feedlots to pasture, and shipments to other feedlots for further feeding.

**Cattle on Feed: Number on Feed by Class, 1,000+ Capacity Feedlots,
by Quarter, State, and United States, 2001-2002**

State	Steers & Steer Calves			Heifers & Heifer Calves			Cows and Bulls		
	Oct 1, 2001	Jul 1, 2002	Oct 1, 2002	Oct 1, 2001	Jul 1, 2002	Oct 1, 2002	Oct 1, 2001	Jul 1, 2002	Oct 1, 2002
	<i>1,000 Head</i>	<i>1,000 Head</i>	<i>1,000 Head</i>	<i>1,000 Head</i>	<i>1,000 Head</i>	<i>1,000 Head</i>	<i>1,000 Head</i>	<i>1,000 Head</i>	<i>1,000 Head</i>
AZ	295	286	281	3	5	7	0	0	0
CA	430	440	455	35	45	38	0	0	2
CO	570	560	585	485	465	440	5	5	5
ID	214	204	194	95	94	86	1	2	0
IA	200	230	200	109	119	114	1	1	1
KS	1,520	1,200	1,240	1,015	950	1,030	5	10	10
NE	990	1,090	1,030	935	780	890	25	20	40
NM	43	53	60	54	48	53	0	0	0
OK	215	195	200	175	122	125	0	8	5
SD	74	90	68	58	78	75	4	7	7
TX	1,685	1,735	1,620	1,300	1,110	1,097	5	5	3
WA	161	114	110	83	65	60	0	1	0
Oth Sts	230	260	215	100	86	69	5	4	1
US	6,627	6,457	6,258	4,447	3,967	4,084	51	63	74

Terms and Definitions of Cattle on Feed Estimates

Cattle on feed are animals being fed a ration of grain, silage, hay and/or protein supplement for slaughter market that are expected to produce a carcass that will grade select or better. It excludes cattle being "backgrounded only" for later sale as feeders or later placement in another feedlot.

Placements are cattle put into a feedlot, fed a ration which will produce a carcass that will grade select or better, and are intended for the slaughter market.

Marketings are cattle shipped out of feedlots to a slaughter market.

Other disappearance includes death loss, movement from feedlots to pasture, and shipments to other feedlots for further feeding.

Reliability of Cattle on Feed Estimates

Survey Procedures: During January and July all known feedlots in the U.S. with capacity of 1,000 or more head are surveyed to provide data for cattle on feed estimates. During the other months, all known feedlots from 17 States are surveyed. The 17 States account for 98 percent of the cattle on feed in feedlots with capacity of 1,000 or more head.

Estimating Procedures: These cattle on feed estimates were prepared by the Agricultural Statistics Board after reviewing recommendations and analysis submitted by each State office. Regional and State survey data were reviewed for reasonableness with each other and with estimates from the previous month when setting the current estimates.

Revision Policy: Revisions to previous estimates are made to improve month to month relationships. Estimates for the previous month are subject to revision in all States each month when current estimates are made. In February, all monthly estimates for the previous year, and the number of feedlots and annual marketings from two years ago are reviewed and subject to revisions. The reviews are primarily based on slaughter data, state check-off or brand data, and any other data that may have been received after the original estimate was made. Estimates will also be reviewed after data from the Census of Agriculture are available. No revisions will be made after that date and estimates become final.

Reliability: Since all 1000+ capacity cattle on feed operators in every State are not included in the monthly survey, survey estimates are subject to sampling variability. Survey results are also subject to non-sampling errors such as omissions, duplications, and mistakes in reporting, recording, and processing the data. The effects of these errors cannot be measured directly. They are minimized through rigid quality controls in the data collection process and through a careful review of all reported data for consistency and reasonableness.

The next "Cattle on Feed" report will be released at 3 p.m. ET on November 15, 2002.

The United States Department of Agriculture (USDA) prohibits discrimination in all its programs on the basis of race, color, national origin, gender, religion, age, disability, political beliefs, sexual orientation, and marital or family status. (Not all prohibited bases apply to all programs.) Persons with disabilities who require alternative means for communication of program information (braille, large print, audiotape, etc.) should contact the USDA's TARGET Center at 202-720-2600 (voice and TDD).

To file a complaint of discrimination, write USDA, Director, Office of Civil Rights, Room 326-W, Whitten Building, 1400 Independence Avenue, SW, Washington, D.C., 20250-9410, or call 202-720-5964 (voice or TDD). USDA is an equal opportunity provider and employer.

ACCESS TO REPORTS!!

For your convenience, there are several ways to obtain NASS reports, data products, and services:

INTERNET ACCESS

All NASS reports are available free of charge on the worldwide Internet. For access, connect to the Internet and go to the NASS Home Page at: <http://www.usda.gov/nass/>. Select "Today's Reports" or Publications and then Reports Calendar or Publications and then Search, by Title or Subject.

E-MAIL SUBSCRIPTION

All NASS reports are available by subscription free of charge direct to your e-mail address. Starting with the NASS Home Page at <http://www.usda.gov/nass/>, click on **Publications**, then click on the **Subscribe by E-mail** button which takes you to the page describing e-mail delivery of reports. Finally, click on **Go to the Subscription Page** and follow the instructions.

AUTOFAX ACCESS

NASSFax service is available for some reports from your fax machine. Please call 202-720-2000, using the handset attached to your fax. Respond to the voice prompts. Document 0411 is a list of available reports.

PRINTED REPORTS OR DATA PRODUCTS

CALL OUR TOLL-FREE ORDER DESK: 800-999-6779 (U.S. and Canada)
Other areas, please call 703-605-6220 FAX: 703-605-6900
(Visa, MasterCard, check, or money order acceptable for payment.)

ASSISTANCE

For **assistance** with general agricultural statistics or further information about NASS or its products or services, contact the **Agricultural Statistics Hotline** at **800-727-9540**, 7:30 a.m. to 4:00 p.m. ET, or e-mail: nass@nass.usda.gov.

**USDA Data Users' Forum
October 21, 2002
Holiday Inn Mart Plaza
Chicago, Illinois**

The USDA's National Agricultural Statistics Service will hold a public forum for open exchange between Federal agricultural statistics agencies and data users on October 21, 2002. Agency representatives will provide updates on pending changes in the various statistical and information programs and will seek comments from data users. The USDA's Agricultural Marketing Service, Economic Research Service, Foreign Agricultural Service, and World Agricultural Outlook Board, as well as the U.S. Census Bureau's Foreign Trade Division, will also participate in the forum.

For registration details or additional information about the Data Users' Forum, see the NASS homepage at www.usda.gov/nass/ or contact Karlyn McCutcheon of NASS at (202) 690-8141 or at karlyn_mccutcheon@nass.usda.gov.

This Data Users' Forum precedes an Industry Outlook Meeting that will be held at the same location on October 22, 2002. The outlook meeting brings together analysts from various commodity sectors to discuss the outlook situation. For more information about the outlook meeting and to register for it, contact Terry Francl of the American Farm Bureau Federation at (847) 685-8769 or at terry@fb.org.