



# Cattle on Feed

---

Released November 15, 2002, by the National Agricultural Statistics Service (NASS), Agricultural Statistics Board, U.S. Department of Agriculture. For information on "Cattle on Feed" call Steve Anderson at (202) 720-3040, office hours 7:30 a.m. to 4:00 p.m. ET.

## U.S. Cattle on Feed Down 9 Percent

**Cattle and calves on feed** for slaughter market in the United States for feedlots with capacity of 1,000 or more head totaled 10.7 million head on November 1, 2002. The inventory was 9 percent below both November 1, 2001 and November 1, 2000.

**Placements** in feedlots during October totaled 2.39 million, 12 percent below 2001 and 16 percent below 2000. Net placements were 2.30 million. During October, placements of cattle and calves weighing less than 600 pounds were 809,000, 600-699 pounds were 638,000, 700-799 pounds were 521,000, and 800 pounds and greater were 420,000.

**Marketings** of fed cattle during October totaled 1.98 million, 4 percent above 2001 and 3 percent above 2000.

**Other disappearance** totaled 84,000 during October, 24 percent above 2001 and 27 percent above 2000.

## Cattle on Feed in Historic 7 States Down 9 Percent

**Cattle on feed** November 1, 2002, in the historic 7 States for feedlots with capacity of 1,000 or more head totaled 9.3 million, down 9 percent from both the previous year and November 1, 2000.

**Placements** in feedlots during October totaled 2.01 million, 13 percent below 2001 and 16 percent below 2000.

**Marketings** during October totaled 1.71 million, 4 percent above both 2001 and 2000.

**Other disappearance** during October was 75,000 head, 32 percent above 2001 and 50 percent above 2000.

### *Special Note*

**Cattle on Feed** release format will be modified to exclude calculation and publication of the historic 7 States. Availability of U.S. and the 12 individually published States data will remain unchanged. The same 7 State data can still be calculated from the U.S. release by summing the historic 7 States totals. This change will be effective beginning in the publication released Friday, February 14th, 2003.

**Cattle on Feed: Number on Feed, Placements, Marketings, and  
Other Disappearance, 1,000+ Capacity Feedlots,  
United States, November 1, 2000-2002**

Item	Number			2002 as % of	
	2000	2001	2002	2000	2001
	<i>1,000 Head</i>	<i>1,000 Head</i>	<i>1,000 Head</i>	<i>Percent</i>	<i>Percent</i>
On Feed Oct 1 <sup>1</sup>	11,016	11,125	10,416	95	94
Placed on Feed During Oct	2,829	2,702	2,388	84	88
Fed Cattle Marketed During Oct	1,915	1,896	1,979	103	104
Other Disappearance During Oct <sup>2</sup>	66	68	84	127	124
On Feed Nov 1 <sup>1</sup>	11,864	11,863	10,741	91	91

<sup>1</sup> Cattle and calves on feed are animals for slaughter market being fed a ration of grain or other concentrates and are expected to produce a carcass that will grade select or better.

<sup>2</sup> Includes death loss, movement from feedlots to pasture, and shipments to other feedlots for further feeding.

**Cattle on Feed: Number on Feed, Placements, Marketings, and  
Other Disappearance, 1,000+ Capacity Feedlots,  
United States, October 1, 2000-2002**

Item	Number			2002 as % of	
	2000	2001	2002	2000	2001
	<i>1,000 Head</i>	<i>1,000 Head</i>	<i>1,000 Head</i>	<i>Percent</i>	<i>Percent</i>
On Feed Sep 1 <sup>1</sup>	10,374	10,855	10,129	98	93
Placed on Feed During Sep	2,686	2,141	2,188	81	102
Fed Cattle Marketed During Sep	1,990	1,825	1,848	93	101
Other Disappearance During Sep <sup>2</sup>	54	46	53	98	115
On Feed Oct 1 <sup>1</sup>	11,016	11,125	10,416	95	94

<sup>1</sup> Cattle and calves on feed are animals for slaughter market being fed a ration of grain or other concentrates and are expected to produce a carcass that will grade select or better.

<sup>2</sup> Includes death loss, movement from feedlots to pasture, and shipments to other feedlots for further feeding.

**Cattle on Feed: Number on Feed, Placements, Marketings, and  
Other Disappearance, 1,000+ Capacity Feedlots,  
7 States, November 1, 2000-2002 <sup>1</sup>**

Item	Number			2002 as % of	
	2000	2001	2002	2000	2001
	<i>1,000 Head</i>	<i>1,000 Head</i>	<i>1,000 Head</i>	<i>Percent</i>	<i>Percent</i>
On Feed Oct 1 <sup>2</sup>	9,502	9,613	9,088	96	95
Placed on Feed During Oct	2,387	2,315	2,008	84	87
Fed Cattle Marketed During Oct	1,647	1,640	1,706	104	104
Other Disappearance During Oct <sup>3</sup>	50	57	75	150	132
On Feed Nov 1 <sup>2</sup>	10,192	10,231	9,315	91	91

<sup>1</sup> The 7 States include AZ, CA, CO, IA, KS, NE, and TX.

<sup>2</sup> Cattle and calves on feed are animals for slaughter market being fed a ration of grain or other concentrates and are expected to produce a carcass that will grade select or better.

<sup>3</sup> Includes death loss, movement from feedlots to pasture, and shipments to other feedlots for further feeding.

**Cattle on Feed: Number on Feed, Placements, Marketings, and  
Other Disappearance, 1,000+ Capacity Feedlots,  
7 States, October 1, 2000-2002 <sup>1</sup>**

Item	Number			2002 as % of	
	2000	2001	2002	2000	2001
	<i>1,000 Head</i>	<i>1,000 Head</i>	<i>1,000 Head</i>	<i>Percent</i>	<i>Percent</i>
On Feed Sep 1 <sup>2</sup>	8,972	9,383	8,845	99	94
Placed on Feed During Sep	2,286	1,811	1,853	81	102
Fed Cattle Marketed During Sep	1,708	1,541	1,565	92	102
Other Disappearance During Sep <sup>3</sup>	48	40	45	94	113
On Feed Oct 1 <sup>2</sup>	9,502	9,613	9,088	96	95

<sup>1</sup> The 7 States include AZ, CA, CO, IA, KS, NE, and TX.

<sup>2</sup> Cattle and calves on feed are animals for slaughter market being fed a ration of grain or other concentrates and are expected to produce a carcass that will grade select or better.

<sup>3</sup> Includes death loss, movement from feedlots to pasture, and shipments to other feedlots for further feeding.

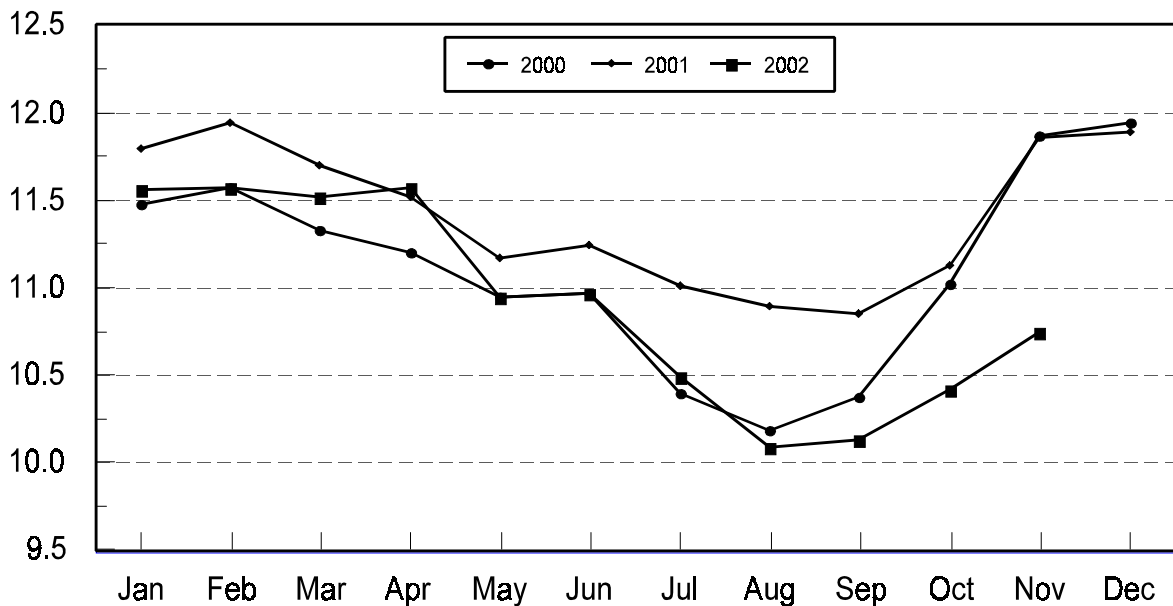
**Cattle on Feed: Number on Feed, 1,000+ Capacity Feedlots,  
by Month, State, and United States 2001-2002 <sup>1</sup>**

State	Nov 1, 2001	Oct 1, 2002	Nov 1, 2002		
			Number	as % of 2001	as % of Oct
	<i>1,000 Head</i>	<i>1,000 Head</i>	<i>1,000 Head</i>	<i>Percent</i>	<i>Percent</i>
AZ	301	288	290	96	101
CA	470	495	490	104	99
CO	1,170	1,030	1,060	91	103
ID	330	280	295	89	105
IA	340	315	335	99	106
KS	2,670	2,280	2,300	86	101
NE	2,200	1,960	2,110	96	108
NM	108	113	116	107	103
OK	395	330	340	86	103
SD	171	150	170	99	113
TX	3,080	2,720	2,730	89	100
WA	258	170	185	72	109
Oth Sts	370	285	320	86	112
US	11,863	10,416	10,741	91	103

<sup>1</sup> Cattle and calves on feed are animals for slaughter market being fed a ration of grain or other concentrates and are expected to produce a carcass that will grade select or better.

**United States Cattle on Feed  
1,000+ Capacity Feedlots**

Million Head



**Cattle on Feed: Number Placed on Feed, 1,000+ Capacity Feedlots,  
by Month, State, and United States 2001-2002**

State	During Oct 2001	During Sep 2002	During Oct 2002		
			Number	as % of 2001	as % of Sep
	<i>1,000 Head</i>	<i>1,000 Head</i>	<i>1,000 Head</i>	<i>Percent</i>	<i>Percent</i>
AZ	35	30	28	80	93
CA	60	60	60	100	100
CO	315	255	250	79	98
ID	79	69	77	97	112
IA	75	68	95	127	140
KS	560	460	455	81	99
NE	590	450	520	88	116
NM	26	20	21	81	105
OK	80	83	75	94	90
SD	61	49	57	93	116
TX	680	530	600	88	113
WA	54	42	49	91	117
Oth Sts	87	72	101	116	140
US	2,702	2,188	2,388	88	109

**Cattle on Feed: Number Placed on Feed by Weight Group, 1,000+ Capacity  
Feedlots, by Month, State, and United States, 2001-2002**

State	During October									
	Under 600		600-699		700-799		800 Plus		Total	
	2001	2002	2001	2002	2001	2002	2001	2002	2001	2002
	<i>1,000 Head</i>	<i>1,000 Head</i>	<i>1,000 Head</i>	<i>1,000 Head</i>	<i>1,000 Head</i>	<i>1,000 Head</i>	<i>1,000 Head</i>	<i>1,000 Head</i>	<i>1,000 Head</i>	<i>1,000 Head</i>
CO	66	94	77	49	94	56	78	51	315	250
KS	150	120	155	145	175	120	80	70	560	455
NE	225	200	161	134	91	87	113	99	590	520
TX	230	175	245	200	145	165	60	60	680	600
Oth Sts	220	220	120	110	87	93	130	140	557	563
US	891	809	758	638	592	521	461	420	2,702	2,388
State	During September									
	Under 600		600-699		700-799		800 Plus		Total	
	2001	2002	2001	2002	2001	2002	2001	2002	2001	2002
	<i>1,000 Head</i>	<i>1,000 Head</i>	<i>1,000 Head</i>	<i>1,000 Head</i>	<i>1,000 Head</i>	<i>1,000 Head</i>	<i>1,000 Head</i>	<i>1,000 Head</i>	<i>1,000 Head</i>	<i>1,000 Head</i>
CO	28	51	40	53	81	78	116	73	265	255
KS	110	105	115	125	145	140	100	90	470	460
NE	75	133	68	74	139	106	168	137	450	450
TX	185	170	150	155	100	145	45	60	480	530
Oth Sts	130	155	75	80	96	113	175	145	476	493
US	528	614	448	487	561	582	604	505	2,141	2,188

**Cattle on Feed: Number Marketed, 1,000+ Capacity Feedlots,  
by Month, State, and United States 2001-2002**

State	During Oct 2001	During Sep 2002	During Oct 2002		
			Number	as % of 2001	as % of Sep
	<i>1,000 Head</i>	<i>1,000 Head</i>	<i>1,000 Head</i>	<i>Percent</i>	<i>Percent</i>
AZ	31	26	25	81	96
CA	50	52	58	116	112
CO	200	220	210	105	95
ID	58	63	61	105	97
IA	44	62	73	166	118
KS	415	400	410	99	103
NE	330	335	360	109	107
NM	14	18	16	114	89
OK	72	57	63	88	111
SD	25	43	36	144	84
TX	570	470	570	100	121
WA	38	26	33	87	127
Oth Sts	49	76	64	131	84
US	1,896	1,848	1,979	104	107

**Cattle on Feed: Other Disappearance, 1,000+ Capacity Feedlots,  
by Month, State, and United States 2001-2002 <sup>1</sup>**

State	During Oct 2001	During Sep 2002	During Oct 2002		
			Number	as % of 2001	as % of Sep
	<i>1,000 Head</i>	<i>1,000 Head</i>	<i>1,000 Head</i>	<i>Percent</i>	<i>Percent</i>
AZ	1	1	1	100	100
CA	5	3	7	140	233
CO	5	5	10	200	200
ID	1	1	1	100	100
IA	1	1	2	200	200
KS	15	10	25	167	250
NE	10	5	10	100	200
NM	1	3	2	200	67
OK	3	1	2	67	200
SD	1	1	1	100	100
TX	20	20	20	100	100
WA	2	1	1	50	100
Oth Sts	3	1	2	67	200
US	68	53	84	124	158

<sup>1</sup> Includes death loss, movement from feedlots to pasture, and shipments to other feedlots for further feeding.

## Terms and Definitions of Cattle on Feed Estimates

**Cattle on feed** are animals being fed a ration of grain, silage, hay and/or protein supplement for slaughter market that are expected to produce a carcass that will grade select or better. It excludes cattle being "backgrounded only" for later sale as feeders or later placement in another feedlot.

**Placements** are cattle put into a feedlot, fed a ration which will produce a carcass that will grade select or better, and are intended for the slaughter market.

**Marketings** are cattle shipped out of feedlots to a slaughter market.

**Other disappearance** includes death loss, movement from feedlots to pasture, and shipments to other feedlots for further feeding.

## Reliability of Cattle on Feed Estimates

**Survey Procedures:** During January and July all known feedlots in the U.S. with capacity of 1,000 or more head are surveyed to provide data for cattle on feed estimates. During the other months, all known feedlots from 17 States are surveyed. The 17 States account for 98 percent of the cattle on feed in feedlots with capacity of 1,000 or more head.

**Estimating Procedures:** These cattle on feed estimates were prepared by the Agricultural Statistics Board after reviewing recommendations and analysis submitted by each State office. Regional and State survey data were reviewed for reasonableness with each other and with estimates from the previous month when setting the current estimates.

**Revision Policy:** Revisions to previous estimates are made to improve month to month relationships. Estimates for the previous month are subject to revision in all States each month when current estimates are made. In February, all monthly estimates for the previous year, and the number of feedlots and annual marketings from two years ago are reviewed and subject to revisions. The reviews are primarily based on slaughter data, state check-off or brand data, and any other data that may have been received after the original estimate was made. Estimates will also be reviewed after data from the Census of Agriculture are available. No revisions will be made after that date and estimates become final.

**Reliability:** Since all 1000+ capacity cattle on feed operators in every State are not included in the monthly survey, survey estimates are subject to sampling variability. Survey results are also subject to non-sampling errors such as omissions, duplications, and mistakes in reporting, recording, and processing the data. The effects of these errors cannot be measured directly. They are minimized through rigid quality controls in the data collection process and through a careful review of all reported data for consistency and reasonableness.

The next "Cattle on Feed" report will be released at 3 p.m. ET on December 20, 2002.

The United States Department of Agriculture (USDA) prohibits discrimination in all its programs on the basis of race, color, national origin, gender, religion, age, disability, political beliefs, sexual orientation, and marital or family status. (Not all prohibited bases apply to all programs.) Persons with disabilities who require alternative means for communication of program information (braille, large print, audiotape, etc.) should contact the USDA's TARGET Center at 202-720-2600 (voice and TDD).

To file a complaint of discrimination, write USDA, Director, Office of Civil Rights, Room 326-W, Whitten Building, 1400 Independence Avenue, SW, Washington, D.C., 20250-9410, or call 202-720-5964 (voice or TDD). USDA is an equal opportunity provider and employer.

## **ACCESS TO REPORTS!!**

---

For your convenience, there are several ways to obtain NASS reports, data products, and services:

### **INTERNET ACCESS**

All NASS reports are available free of charge on the worldwide Internet. For access, connect to the Internet and go to the NASS Home Page at: <http://www.usda.gov/nass/>. Select "Today's Reports" or Publications and then Reports Calendar or Publications and then Search, by Title or Subject.

### **E-MAIL SUBSCRIPTION**

All NASS reports are available by subscription free of charge direct to your e-mail address. Starting with the NASS Home Page at <http://www.usda.gov/nass/>, click on **Publications**, then click on the **Subscribe by E-mail** button which takes you to the page describing e-mail delivery of reports. Finally, click on **Go to the Subscription Page** and follow the instructions.

### **AUTOFAX ACCESS**

NASSFax service is available for some reports from your fax machine. Please call 202-720-2000, using the handset attached to your fax. Respond to the voice prompts. Document 0411 is a list of available reports.

-----

### **PRINTED REPORTS OR DATA PRODUCTS**

**CALL OUR TOLL-FREE ORDER DESK: 800-999-6779 (U.S. and Canada)**  
**Other areas, please call 703-605-6220      FAX: 703-605-6900**  
**(Visa, MasterCard, check, or money order acceptable for payment.)**

-----

### **ASSISTANCE**

For **assistance** with general agricultural statistics or further information about NASS or its products or services, contact the **Agricultural Statistics Hotline** at **800-727-9540**, 7:30 a.m. to 4:00 p.m. ET, or e-mail: [nass@nass.usda.gov](mailto:nass@nass.usda.gov).

---