



Cattle on Feed

Released December 20, 2002, by the National Agricultural Statistics Service (NASS), Agricultural Statistics Board, U.S. Department of Agriculture. For information on "Cattle on Feed" call Steve Anderson at (202) 720-3040, office hours 7:30 a.m. to 4:00 p.m. ET.

U.S. Cattle on Feed Down 8 Percent

Cattle and calves on feed for slaughter market in the United States for feedlots with capacity of 1,000 or more head totaled 10.9 million head on December 1, 2002. The inventory was 8 percent below December 1, 2001 and 9 percent below December 1, 2000.

Placements in feedlots during November totaled 1.98 million, 4 percent above 2001 but 2 percent below 2000. Net placements were 1.89 million. During November, placements of cattle and calves weighing less than 600 pounds were 589,000, 600-699 pounds were 660,000, 700-799 pounds were 417,000, and 800 pounds and greater were 311,000.

Marketings of fed cattle during November totaled 1.73 million, 4 percent below 2001 and 5 percent below 2000.

Other disappearance totaled 90,000 during November, 13 percent above 2001 but 14 percent below 2000.

Cattle on Feed in Historic 7 States Down 8 Percent

Cattle on feed December 1, 2002, in the historic 7 States for feedlots with capacity of 1,000 or more head totaled 9.4 million, down 8 percent from the previous year and 8 percent below December 1, 2000.

Placements in feedlots during November totaled 1.67 million, 5 percent above 2001 but 1 percent below 2000.

Marketings during November totaled 1.51 million, 2 percent below 2001 and 4 percent below 2000.

Other disappearance during November was 80,000 head, 18 percent above 2001 but 10 percent below 2000.

Special Note

Cattle on Feed release format will be modified to exclude calculation and publication of the historic 7 States. Availability of U.S. and the 12 individually published States data will remain unchanged. The same 7 State data can still be calculated from the U.S. release by summing the historic 7 States totals. This change will be effective beginning in the publication released Friday, February 14th, 2003.

**Cattle on Feed: Number on Feed, Placements, Marketings, and
Other Disappearance, 1,000+ Capacity Feedlots,
United States, December 1, 2000-2002**

Item	Number			2002 as % of	
	2000	2001	2002	2000	2001
	<i>1,000 Head</i>	<i>1,000 Head</i>	<i>1,000 Head</i>	<i>Percent</i>	<i>Percent</i>
On Feed Nov 1 ¹	11,864	11,863	*10,742	91	91
Placed on Feed During Nov	2,014	1,908	1,977	98	104
Fed Cattle Marketed During Nov	1,825	1,800	1,731	95	96
Other Disappearance During Nov ²	105	80	90	86	113
On Feed Dec 1 ¹	11,948	11,891	10,898	91	92

* Revised.

¹ Cattle and calves on feed are animals for slaughter market being fed a ration of grain or other concentrates and are expected to produce a carcass that will grade select or better.

² Includes death loss, movement from feedlots to pasture, and shipments to other feedlots for further feeding.

**Cattle on Feed: Number on Feed, Placements, Marketings, and
Other Disappearance, 1,000+ Capacity Feedlots,
United States, November 1, 2000-2002**

Item	Number			2002 as % of	
	2000	2001	2002	2000	2001
	<i>1,000 Head</i>	<i>1,000 Head</i>	<i>1,000 Head</i>	<i>Percent</i>	<i>Percent</i>
On Feed Oct 1 ¹	11,016	11,125	10,416	95	94
Placed on Feed During Oct	2,829	2,702	*2,389	84	88
Fed Cattle Marketed During Oct	1,915	1,896	1,979	103	104
Other Disappearance During Oct ²	66	68	84	127	124
On Feed Nov 1 ¹	11,864	11,863	*10,742	91	91

* Revised.

¹ Cattle and calves on feed are animals for slaughter market being fed a ration of grain or other concentrates and are expected to produce a carcass that will grade select or better.

² Includes death loss, movement from feedlots to pasture, and shipments to other feedlots for further feeding.

**Cattle on Feed: Number on Feed, Placements, Marketings, and
Other Disappearance, 1,000+ Capacity Feedlots,
7 States, December 1, 2000-2002 ¹**

Item	Number			2002 as % of	
	2000	2001	2002	2000	2001
	<i>1,000 Head</i>	<i>1,000 Head</i>	<i>1,000 Head</i>	<i>Percent</i>	<i>Percent</i>
On Feed Nov 1 ²	10,192	10,231	9,315	91	91
Placed on Feed During Nov	1,678	1,581	1,667	99	105
Fed Cattle Marketed During Nov	1,568	1,541	1,507	96	98
Other Disappearance During Nov ³	89	68	80	90	118
On Feed Dec 1 ²	10,213	10,203	9,395	92	92

¹ The 7 States include AZ, CA, CO, IA, KS, NE, and TX.

² Cattle and calves on feed are animals for slaughter market being fed a ration of grain or other concentrates and are expected to produce a carcass that will grade select or better.

³ Includes death loss, movement from feedlots to pasture, and shipments to other feedlots for further feeding.

**Cattle on Feed: Number on Feed, Placements, Marketings, and
Other Disappearance, 1,000+ Capacity Feedlots,
7 States, November 1, 2000-2002 ¹**

Item	Number			2002 as % of	
	2000	2001	2002	2000	2001
	<i>1,000 Head</i>	<i>1,000 Head</i>	<i>1,000 Head</i>	<i>Percent</i>	<i>Percent</i>
On Feed Oct 1 ²	9,502	9,613	9,088	96	95
Placed on Feed During Oct	2,387	2,315	2,008	84	87
Fed Cattle Marketed During Oct	1,647	1,640	1,706	104	104
Other Disappearance During Oct ³	50	57	75	150	132
On Feed Nov 1 ²	10,192	10,231	9,315	91	91

¹ The 7 States include AZ, CA, CO, IA, KS, NE, and TX.

² Cattle and calves on feed are animals for slaughter market being fed a ration of grain or other concentrates and are expected to produce a carcass that will grade select or better.

³ Includes death loss, movement from feedlots to pasture, and shipments to other feedlots for further feeding.

**Cattle on Feed: Number on Feed, 1,000+ Capacity Feedlots,
by Month, State, and United States 2001-2002 ¹**

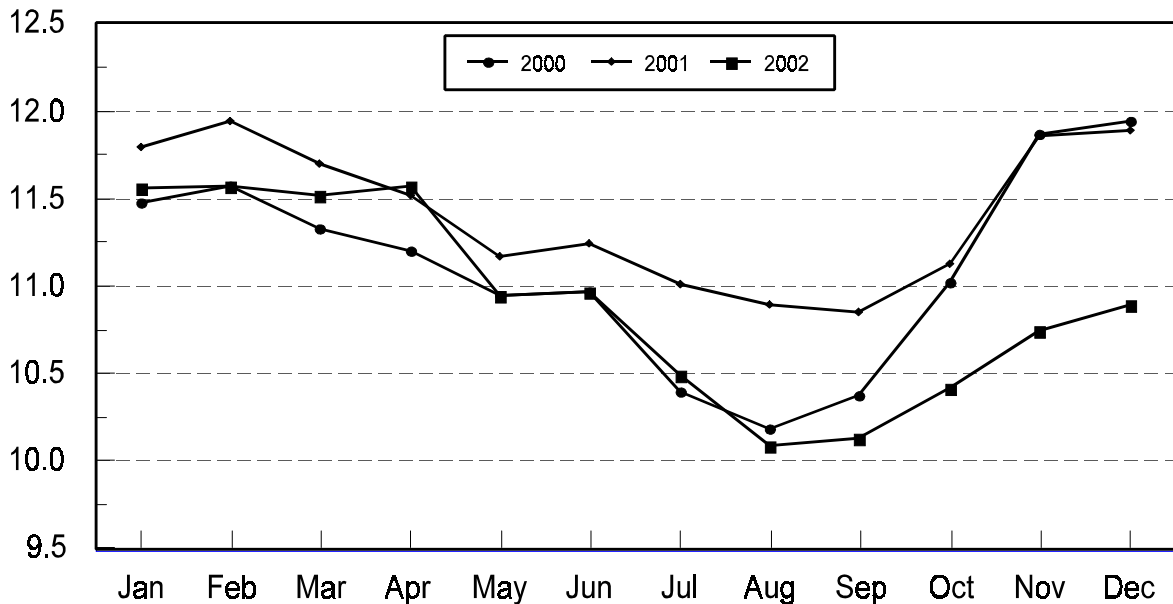
State	Dec 1, 2001	Nov 1, 2002	Dec 1, 2002		
			Number	as % of 2001	as % of Nov
	<i>1,000 Head</i>	<i>1,000 Head</i>	<i>1,000 Head</i>	<i>Percent</i>	<i>Percent</i>
AZ	303	290	295	97	102
CA	490	490	500	102	102
CO	1,160	1,060	1,070	92	101
ID	340	295	300	88	102
IA	350	335	350	100	104
KS	2,640	2,300	2,300	87	100
NE	2,270	2,110	2,180	96	103
NM	108	*117	123	114	105
OK	385	340	340	88	100
SD	195	170	195	100	115
TX	2,990	2,730	2,700	90	99
WA	260	185	195	75	105
Oth Sts	400	320	350	88	109
US	11,891	*10,742	10,898	92	101

* Revised.

¹ Cattle and calves on feed are animals for slaughter market being fed a ration of grain or other concentrates and are expected to produce a carcass that will grade select or better.

**United States Cattle on Feed
1,000+ Capacity Feedlots**

Million Head



**Cattle on Feed: Number Placed on Feed, 1,000+ Capacity Feedlots,
by Month, State, and United States 2001-2002**

State	During Nov 2001	During Oct 2002	During Nov 2002		
			Number	as % of 2001	as % of Oct
	<i>1,000 Head</i>	<i>1,000 Head</i>	<i>1,000 Head</i>	<i>Percent</i>	<i>Percent</i>
AZ	31	28	32	103	114
CA	70	60	65	93	108
CO	175	250	190	109	76
ID	74	77	60	81	78
IA	75	95	80	107	84
KS	410	455	420	102	92
NE	390	520	410	105	79
NM	15	*22	18	120	82
OK	59	75	55	93	73
SD	53	57	56	106	98
TX	430	600	470	109	78
WA	48	49	40	83	82
Oth Sts	78	101	81	104	80
US	1,908	*2,389	1,977	104	83

* Revised.

**Cattle on Feed: Number Placed on Feed by Weight Group, 1,000+ Capacity
Feedlots, by Month, State, and United States, 2001-2002**

State	During November									
	Under 600		600-699		700-799		800 Plus		Total	
	2001	2002	2001	2002	2001	2002	2001	2002	2001	2002
	<i>1,000 Head</i>	<i>1,000 Head</i>	<i>1,000 Head</i>	<i>1,000 Head</i>	<i>1,000 Head</i>	<i>1,000 Head</i>	<i>1,000 Head</i>	<i>1,000 Head</i>	<i>1,000 Head</i>	<i>1,000 Head</i>
CO	57	58	49	60	43	43	26	29	175	190
KS	115	95	145	155	95	110	55	60	410	420
NE	133	113	119	142	60	70	78	85	390	410
TX	155	141	155	188	95	114	25	27	430	470
Oth Sts	195	182	120	115	88	80	100	110	503	487
US	655	589	588	660	381	417	284	311	1,908	1,977
	During October									
	Under 600		600-699		700-799		800 Plus		Total	
	2001	2002	2001	2002	2001	2002	2001	2002	2001	2002
	<i>1,000 Head</i>	<i>1,000 Head</i>	<i>1,000 Head</i>	<i>1,000 Head</i>	<i>1,000 Head</i>	<i>1,000 Head</i>	<i>1,000 Head</i>	<i>1,000 Head</i>	<i>1,000 Head</i>	<i>1,000 Head</i>
CO	66	94	77	49	94	56	78	51	315	250
KS	150	120	155	145	175	120	80	70	560	455
NE	225	200	161	134	91	87	113	99	590	520
TX	230	175	245	200	145	165	60	60	680	600
Oth Sts	220	220	120	110	87	*94	130	140	557	*564
US	891	809	758	638	592	*522	461	420	2,702	*2,389

* Revised.

**Cattle on Feed: Number Marketed, 1,000+ Capacity Feedlots,
by Month, State, and United States 2001-2002**

State	During Nov 2001	During Oct 2002	During Nov 2002		
			Number	as % of 2001	as % of Oct
	<i>1,000 Head</i>	<i>1,000 Head</i>	<i>1,000 Head</i>	<i>Percent</i>	<i>Percent</i>
AZ	27	25	24	89	96
CA	45	58	50	111	86
CO	180	210	170	94	81
ID	61	61	53	87	87
IA	64	73	63	98	86
KS	420	410	395	94	96
NE	305	360	330	108	92
NM	14	16	11	79	69
OK	66	63	53	80	84
SD	29	36	30	103	83
TX	500	570	475	95	83
WA	45	33	29	64	88
Oth Sts	44	64	48	109	75
US	1,800	1,979	1,731	96	87

**Cattle on Feed: Other Disappearance, 1,000+ Capacity Feedlots,
by Month, State, and United States 2001-2002 ¹**

State	During Nov 2001	During Oct 2002	During Nov 2002		
			Number	as % of 2001	as % of Oct
	<i>1,000 Head</i>	<i>1,000 Head</i>	<i>1,000 Head</i>	<i>Percent</i>	<i>Percent</i>
AZ	2	1	3	150	300
CA	5	7	5	100	71
CO	5	10	10	200	100
ID	3	1	2	67	200
IA	1	2	2	200	100
KS	20	25	25	125	100
NE	15	10	10	67	100
NM	1	2	1	100	50
OK	3	2	2	67	100
SD	0	1	1		100
TX	20	20	25	125	125
WA	1	1	1	100	100
Oth Sts	4	2	3	75	150
US	80	84	90	113	107

¹ Includes death loss, movement from feedlots to pasture, and shipments to other feedlots for further feeding.

Terms and Definitions of Cattle on Feed Estimates

Cattle on feed are animals being fed a ration of grain, silage, hay and/or protein supplement for slaughter market that are expected to produce a carcass that will grade select or better. It excludes cattle being "backgrounded only" for later sale as feeders or later placement in another feedlot.

Placements are cattle put into a feedlot, fed a ration which will produce a carcass that will grade select or better, and are intended for the slaughter market.

Marketings are cattle shipped out of feedlots to a slaughter market.

Other disappearance includes death loss, movement from feedlots to pasture, and shipments to other feedlots for further feeding.

Reliability of Cattle on Feed Estimates

Survey Procedures: During January and July all known feedlots in the U.S. with capacity of 1,000 or more head are surveyed to provide data for cattle on feed estimates. During the other months, all known feedlots from 17 States are surveyed. The 17 States account for 98 percent of the cattle on feed in feedlots with capacity of 1,000 or more head.

Estimating Procedures: These cattle on feed estimates were prepared by the Agricultural Statistics Board after reviewing recommendations and analysis submitted by each State office. Regional and State survey data were reviewed for reasonableness with each other and with estimates from the previous month when setting the current estimates.

Revision Policy: Revisions to previous estimates are made to improve month to month relationships. Estimates for the previous month are subject to revision in all States each month when current estimates are made. In February, all monthly estimates for the previous year, and the number of feedlots and annual marketings from two years ago are reviewed and subject to revisions. The reviews are primarily based on slaughter data, state check-off or brand data, and any other data that may have been received after the original estimate was made. Estimates will also be reviewed after data from the Census of Agriculture are available. No revisions will be made after that date and estimates become final.

Reliability: Since all 1000+ capacity cattle on feed operators in every State are not included in the monthly survey, survey estimates are subject to sampling variability. Survey results are also subject to non-sampling errors such as omissions, duplications, and mistakes in reporting, recording, and processing the data. The effects of these errors cannot be measured directly. They are minimized through rigid quality controls in the data collection process and through a careful review of all reported data for consistency and reasonableness.

The next "Cattle on Feed" report will be released at 3 p.m. ET on January 17, 2003.

The United States Department of Agriculture (USDA) prohibits discrimination in all its programs on the basis of race, color, national origin, gender, religion, age, disability, political beliefs, sexual orientation, and marital or family status. (Not all prohibited bases apply to all programs.) Persons with disabilities who require alternative means for communication of program information (braille, large print, audiotape, etc.) should contact the USDA's TARGET Center at 202-720-2600 (voice and TDD).

To file a complaint of discrimination, write USDA, Director, Office of Civil Rights, Room 326-W, Whitten Building, 1400 Independence Avenue, SW, Washington, D.C., 20250-9410, or call 202-720-5964 (voice or TDD). USDA is an equal opportunity provider and employer.

ACCESS TO REPORTS!!

For your convenience, there are several ways to obtain NASS reports, data products, and services:

INTERNET ACCESS

All NASS reports are available free of charge on the worldwide Internet. For access, connect to the Internet and go to the NASS Home Page at: <http://www.usda.gov/nass/>. Select "Today's Reports" or Publications and then Reports Calendar or Publications and then Search, by Title or Subject.

E-MAIL SUBSCRIPTION

All NASS reports are available by subscription free of charge direct to your e-mail address. Starting with the NASS Home Page at <http://www.usda.gov/nass/>, click on **Publications**, then click on the **Subscribe by E-mail** button which takes you to the page describing e-mail delivery of reports. Finally, click on **Go to the Subscription Page** and follow the instructions.

AUTOFAX ACCESS

NASSFax service is available for some reports from your fax machine. Please call 202-720-2000, using the handset attached to your fax. Respond to the voice prompts. Document 0411 is a list of available reports.

PRINTED REPORTS OR DATA PRODUCTS

CALL OUR TOLL-FREE ORDER DESK: 800-999-6779 (U.S. and Canada)
Other areas, please call 703-605-6220 FAX: 703-605-6900
(Visa, MasterCard, check, or money order acceptable for payment.)

ASSISTANCE

For **assistance** with general agricultural statistics or further information about NASS or its products or services, contact the **Agricultural Statistics Hotline** at **800-727-9540**, 7:30 a.m. to 4:00 p.m. ET, or e-mail: nass@nass.usda.gov.
