



Cattle on Feed

Released January 17, 2003, by the National Agricultural Statistics Service (NASS), Agricultural Statistics Board, U.S. Department of Agriculture. For information on "Cattle on Feed" call Steve Anderson at (202) 720-3040, office hours 7:30 a.m. to 4:00 p.m. ET.

U.S. Cattle on Feed Down 8 Percent

Cattle and calves on feed for slaughter market in the United States for feedlots with capacity of 1,000 or more head totaled 10.6 million head on January 1, 2003. The inventory was 8 percent below January 1, 2002 and 10 percent below January 1, 2001. The inventory included 6.53 million steers and steer calves, down 8 percent from the previous year. This group accounted for 62 percent of the total inventory. Heifers and heifer calves accounted for 3.98 million head, down 9 percent from January 1, 2002.

Placements in feedlots during December totaled 1.59 million, 1 percent above 2001 but 6 percent below 2000. Net placements were 1.49 million. During December, placements of cattle and calves weighing less than 600 pounds were 421,000, 600-699 pounds were 507,000, 700-799 pounds were 407,000, and 800 pounds and greater were 255,000.

Marketings of fed cattle during December totaled 1.80 million, 1 percent below 2001 but 3 percent above 2000.

Other disappearance totaled 99,000 during December, 6 percent above 2001 and 4 percent above 2000.

Cattle on Feed in Historic 7 States Down 8 Percent

Cattle on feed January 1, 2003, in the historic 7 States for feedlots with capacity of 1,000 or more head totaled 9.1 million, down 8 percent from the previous year and 9 percent below January 1, 2001. The inventory included 5.61 million steers and steer calves, down 8 percent from the previous year. This group accounted for 61 percent of the total inventory. Heifers and heifer calves accounted for 3.47 million head, down 8 percent from January 1, 2002.

Placements in feedlots during December totaled 1.38 million, 4 percent above 2001 but 4 percent below 2000.

Marketings during December totaled 1.57 million, 1 percent above 2001 and 4 percent above 2000.

Other disappearance during December was 85,000 head, up 9 percent from 2001 and 10 percent above 2000.

Special Note

Cattle on Feed release format will be modified to exclude calculation and publication of the historic 7 States. Availability of U.S. and the 12 individually published States data will remain unchanged. The same 7 State data can still be calculated from the U.S. release by summing the historic 7 States totals. This change will be effective beginning in the publication released Friday, February 14th, 2003.

**Cattle on Feed: Number on Feed, Placements, Marketings, and
Other Disappearance, 1,000+ Capacity Feedlots,
United States, January 1, 2001-2003**

Item	Number			2003 as % of	
	2001	2002	2003	2001	2002
	<i>1,000 Head</i>	<i>1,000 Head</i>	<i>1,000 Head</i>	<i>Percent</i>	<i>Percent</i>
On Feed Dec 1 ¹	11,948	11,891	10,898	91	92
Placed on Feed During Dec	1,699	1,578	1,590	94	101
Fed Cattle Marketed During Dec	1,754	1,811	1,801	103	99
Other Disappearance During Dec ²	95	93	99	104	106
On Feed Jan 1 ¹	11,798	11,565	10,588	90	92

¹ Cattle and calves on feed are animals for slaughter market being fed a ration of grain or other concentrates and are expected to produce a carcass that will grade select or better.

² Includes death loss, movement from feedlots to pasture, and shipments to other feedlots for further feeding.

**Cattle on Feed: Number on Feed, Placements, Marketings, and
Other Disappearance, 1,000+ Capacity Feedlots,
United States, December 1, 2000-2002**

Item	Number			2002 as % of	
	2000	2001	2002	2000	2001
	<i>1,000 Head</i>	<i>1,000 Head</i>	<i>1,000 Head</i>	<i>Percent</i>	<i>Percent</i>
On Feed Nov 1 ¹	11,864	11,863	10,742	91	91
Placed on Feed During Nov	2,014	1,908	1,977	98	104
Fed Cattle Marketed During Nov	1,825	1,800	1,731	95	96
Other Disappearance During Nov ²	105	80	90	86	113
On Feed Dec 1 ¹	11,948	11,891	10,898	91	92

¹ Cattle and calves on feed are animals for slaughter market being fed a ration of grain or other concentrates and are expected to produce a carcass that will grade select or better.

² Includes death loss, movement from feedlots to pasture, and shipments to other feedlots for further feeding.

**Cattle on Feed: Number on Feed by Class, 1,000+ Capacity Feedlots,
United States, January 1, 2001-2003**

Item	Number			2003 as % of	
	2001	2002	2003	2001	2002
	<i>1,000 Head</i>	<i>1,000 Head</i>	<i>1,000 Head</i>	<i>Percent</i>	<i>Percent</i>
Class on Feed Jan 1					
Steers and Steer Calves	7,018	7,103	6,532	93	92
Heifers and Heifer Calves	4,696	4,375	3,978	85	91
Cows and Bulls	84	87	78	93	90

**Cattle on Feed: Number on Feed, Placements, Marketings, and
Other Disappearance, 1,000+ Capacity Feedlots,
7 States, January 1, 2001-2003 ¹**

Item	Number			2003 as % of	
	2001	2002	2003	2001	2002
	<i>1,000 Head</i>	<i>1,000 Head</i>	<i>1,000 Head</i>	<i>Percent</i>	<i>Percent</i>
On Feed Dec 1 ²	10,213	10,203	9,395	92	92
Placed on Feed During Dec	1,440	1,330	1,380	96	104
Fed Cattle Marketed During Dec	1,500	1,545	1,566	104	101
Other Disappearance During Dec ³	77	78	85	110	109
On Feed Jan 1 ²	10,076	9,910	9,124	91	92

¹ The 7 States include AZ, CA, CO, IA, KS, NE, and TX.

² Cattle and calves on feed are animals for slaughter market being fed a ration of grain or other concentrates and are expected to produce a carcass that will grade select or better.

³ Includes death loss, movement from feedlots to pasture, and shipments to other feedlots for further feeding.

**Cattle on Feed: Number on Feed, Placements, Marketings, and
Other Disappearance, 1,000+ Capacity Feedlots,
7 States, December 1, 2000-2002 ¹**

Item	Number			2002 as % of	
	2000	2001	2002	2000	2001
	<i>1,000 Head</i>	<i>1,000 Head</i>	<i>1,000 Head</i>	<i>Percent</i>	<i>Percent</i>
On Feed Nov 1 ²	10,192	10,231	9,315	91	91
Placed on Feed During Nov	1,678	1,581	1,667	99	105
Fed Cattle Marketed During Nov	1,568	1,541	1,507	96	98
Other Disappearance During Nov ³	89	68	80	90	118
On Feed Dec 1 ²	10,213	10,203	9,395	92	92

¹ The 7 States include AZ, CA, CO, IA, KS, NE, and TX.

² Cattle and calves on feed are animals for slaughter market being fed a ration of grain or other concentrates and are expected to produce a carcass that will grade select or better.

³ Includes death loss, movement from feedlots to pasture, and shipments to other feedlots for further feeding.

**Cattle on Feed: Number on Feed by Class, 1,000+ Capacity Feedlots,
7 States, January 1, 2001-2003 ¹**

Item	Number			2003 as % of	
	2001	2002	2003	2001	2002
	<i>1,000 Head</i>	<i>1,000 Head</i>	<i>1,000 Head</i>	<i>Percent</i>	<i>Percent</i>
Class on Feed Jan 1					
Steers and Steer Calves	5,936	6,077	5,606	94	92
Heifers and Heifer Calves	4,081	3,769	3,466	85	92
Cows and Bulls	59	64	52	88	81

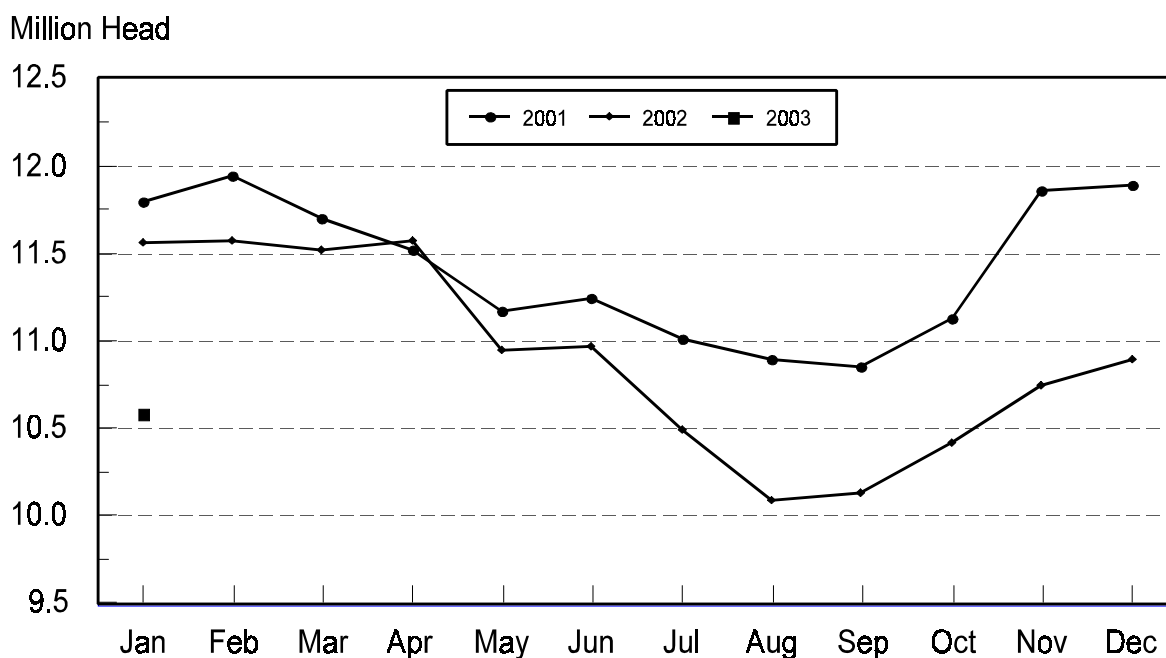
¹ The 7 States include AZ, CA, CO, IA, KS, NE, and TX.

**Cattle on Feed: Number on Feed, 1,000+ Capacity Feedlots,
by Month, State, and United States 2002-2003¹**

State	Jan 1, 2002	Dec 1, 2002	Jan 1, 2003		
			Number	as % of 2002	as % of Dec
	<i>1,000 Head</i>	<i>1,000 Head</i>	<i>1,000 Head</i>	<i>Percent</i>	<i>Percent</i>
AZ	305	295	289	95	98
CA	480	500	490	102	98
CO	1,180	1,070	1,020	86	95
ID	330	300	295	89	98
IA	355	350	355	100	101
KS	2,480	2,300	2,200	89	96
NE	2,230	2,180	2,140	96	98
NM	108	123	119	110	97
OK	360	340	330	92	97
SD	195	195	205	105	105
TX	2,880	2,700	2,630	91	97
WA	247	195	180	73	92
Oth Sts	415	350	335	81	96
US	11,565	10,898	10,588	92	97

¹ Cattle and calves on feed are animals for slaughter market being fed a ration of grain or other concentrates and are expected to produce a carcass that will grade select or better.

**United States Cattle on Feed
1,000+ Capacity Feedlots**



**Cattle on Feed: Number Placed on Feed, 1,000+ Capacity Feedlots,
by Month, State, and United States 2001-2002**

State	During Dec 2001	During Nov 2002	During Dec 2002		
			Number	as % of 2001	as % of Nov
	<i>1,000 Head</i>	<i>1,000 Head</i>	<i>1,000 Head</i>	<i>Percent</i>	<i>Percent</i>
AZ	30	32	25	83	78
CA	50	65	55	110	85
CO	165	190	145	88	76
ID	51	60	44	86	73
IA	55	80	65	118	81
KS	370	420	390	105	93
NE	300	410	340	113	83
NM	14	18	12	86	67
OK	42	55	34	81	62
SD	35	56	38	109	68
TX	360	470	360	100	77
WA	38	40	27	71	68
Oth Sts	68	81	55	81	68
US	1,578	1,977	1,590	101	80

**Cattle on Feed: Number Placed on Feed by Weight Group, 1,000+ Capacity
Feedlots, by Month, State, and United States, 2001-2002**

State	During December									
	Under 600		600-699		700-799		800 Plus		Total	
	2001	2002	2001	2002	2001	2002	2001	2002	2001	2002
	<i>1,000 Head</i>	<i>1,000 Head</i>	<i>1,000 Head</i>	<i>1,000 Head</i>	<i>1,000 Head</i>	<i>1,000 Head</i>	<i>1,000 Head</i>	<i>1,000 Head</i>	<i>1,000 Head</i>	<i>1,000 Head</i>
CO	36	33	52	41	50	46	27	25	165	145
KS	65	70	120	155	125	105	60	60	370	390
NE	62	64	93	103	80	102	65	71	300	340
TX	115	134	115	133	85	72	45	21	360	360
Oth Sts	140	120	95	75	73	82	75	78	383	355
US	418	421	475	507	413	407	272	255	1,578	1,590
	During November									
	Under 600		600-699		700-799		800 Plus		Total	
	2001	2002	2001	2002	2001	2002	2001	2002	2001	2002
	<i>1,000 Head</i>	<i>1,000 Head</i>	<i>1,000 Head</i>	<i>1,000 Head</i>	<i>1,000 Head</i>	<i>1,000 Head</i>	<i>1,000 Head</i>	<i>1,000 Head</i>	<i>1,000 Head</i>	<i>1,000 Head</i>
CO	57	58	49	60	43	43	26	29	175	190
KS	115	95	145	155	95	110	55	60	410	420
NE	133	113	119	142	60	70	78	85	390	410
TX	155	141	155	188	95	114	25	27	430	470
Oth Sts	195	182	120	115	88	80	100	110	503	487
US	655	589	588	660	381	417	284	311	1,908	1,977

**Cattle on Feed: Number Marketed, 1,000+ Capacity Feedlots,
by Month, State, and United States 2001-2002**

State	During Dec 2001	During Nov 2002	During Dec 2002		
			Number	as % of 2001	as % of Nov
	<i>1,000 Head</i>	<i>1,000 Head</i>	<i>1,000 Head</i>	<i>Percent</i>	<i>Percent</i>
AZ	26	24	27	104	113
CA	50	50	55	110	110
CO	135	170	185	137	109
ID	59	53	47	80	89
IA	49	63	59	120	94
KS	510	395	470	92	119
NE	325	330	370	114	112
NM	13	11	15	115	136
OK	65	53	41	63	77
SD	34	30	27	79	90
TX	450	475	400	89	84
WA	47	29	40	85	138
Oth Sts	48	48	65	135	135
US	1,811	1,731	1,801	99	104

**Cattle on Feed: Other Disappearance, 1,000+ Capacity Feedlots,
by Month, State, and United States 2001-2002 ¹**

State	During Dec 2001	During Nov 2002	During Dec 2002		
			Number	as % of 2001	as % of Nov
	<i>1,000 Head</i>	<i>1,000 Head</i>	<i>1,000 Head</i>	<i>Percent</i>	<i>Percent</i>
AZ	2	3	4	200	133
CA	10	5	10	100	200
CO	10	10	10	100	100
ID	2	2	2	100	100
IA	1	2	1	100	50
KS	20	25	20	100	80
NE	15	10	10	67	100
NM	1	1	1	100	100
OK	2	2	3	150	150
SD	1	1	1	100	100
TX	20	25	30	150	120
WA	4	1	2	50	200
Oth Sts	5	3	5	100	167
US	93	90	99	106	110

¹ Includes death loss, movement from feedlots to pasture, and shipments to other feedlots for further feeding.

**Cattle on Feed: Number on Feed by Class, 1,000+ Capacity Feedlots,
by Quarter, State, and United States, 2002-2003**

State	Steers & Steer Calves			Heifers & Heifer Calves			Cows and Bulls		
	Jan 1, 2002	Oct 1, 2002	Jan 1, 2003	Jan 1, 2002	Oct 1, 2002	Jan 1, 2003	Jan 1, 2002	Oct 1, 2002	Jan 1, 2003
	<i>1,000 Head</i>	<i>1,000 Head</i>	<i>1,000 Head</i>	<i>1,000 Head</i>	<i>1,000 Head</i>	<i>1,000 Head</i>	<i>1,000 Head</i>	<i>1,000 Head</i>	<i>1,000 Head</i>
AZ	302	281	281	3	7	8	0	0	0
CA	440	455	450	40	38	40	0	2	0
CO	675	585	585	500	440	425	5	5	10
ID	216	194	196	107	86	97	7	0	2
IA	230	200	240	124	114	114	1	1	1
KS	1,400	1,240	1,180	1,070	1,030	1,010	10	10	10
NE	1,330	1,030	1,240	855	890	870	45	40	30
NM	50	60	56	58	53	63	0	0	0
OK	210	200	215	150	125	114	0	5	1
SD	99	68	104	88	75	83	8	7	18
TX	1,700	1,620	1,630	1,177	1,097	999	3	3	1
WA	151	110	105	96	60	75	0	0	0
Oth Sts	300	215	250	107	69	80	8	1	5
US	7,103	6,258	6,532	4,375	4,084	3,978	87	74	78

Terms and Definitions of Cattle on Feed Estimates

Cattle on feed are animals being fed a ration of grain, silage, hay and/or protein supplement for slaughter market that are expected to produce a carcass that will grade select or better. It excludes cattle being "backgrounded only" for later sale as feeders or later placement in another feedlot.

Placements are cattle put into a feedlot, fed a ration which will produce a carcass that will grade select or better, and are intended for the slaughter market.

Marketings are cattle shipped out of feedlots to a slaughter market.

Other disappearance includes death loss, movement from feedlots to pasture, and shipments to other feedlots for further feeding.

Reliability of Cattle on Feed Estimates

Survey Procedures: During January and July all known feedlots in the U.S. with capacity of 1,000 or more head are surveyed to provide data for cattle on feed estimates. During the other months, all known feedlots from 17 States are surveyed. The 17 States account for 98 percent of the cattle on feed in feedlots with capacity of 1,000 or more head.

Estimating Procedures: These cattle on feed estimates were prepared by the Agricultural Statistics Board after reviewing recommendations and analysis submitted by each State office. Regional and State survey data were reviewed for reasonableness with each other and with estimates from the previous month when setting the current estimates.

Revision Policy: Revisions to previous estimates are made to improve month to month relationships. Estimates for the previous month are subject to revision in all States each month when current estimates are made. In February, all monthly estimates for the previous year, and the number of feedlots and annual marketings from two years ago are reviewed and subject to revisions. The reviews are primarily based on slaughter data, state check-off or brand data, and any other data that may have been received after the original estimate was made. Estimates will also be reviewed after data from the Census of Agriculture are available. No revisions will be made after that date and estimates become final.

Reliability: Since all 1000+ capacity cattle on feed operators in every State are not included in the monthly survey, survey estimates are subject to sampling variability. Survey results are also subject to non-sampling errors such as omissions, duplications, and mistakes in reporting, recording, and processing the data. The effects of these errors cannot be measured directly. They are minimized through rigid quality controls in the data collection process and through a careful review of all reported data for consistency and reasonableness.

The next "Cattle on Feed" report will be released at 3 p.m. ET on February 14, 2003.

The United States Department of Agriculture (USDA) prohibits discrimination in all its programs on the basis of race, color, national origin, gender, religion, age, disability, political beliefs, sexual orientation, and marital or family status. (Not all prohibited bases apply to all programs.) Persons with disabilities who require alternative means for communication of program information (braille, large print, audiotape, etc.) should contact the USDA's TARGET Center at 202-720-2600 (voice and TDD).

To file a complaint of discrimination, write USDA, Director, Office of Civil Rights, Room 326-W, Whitten Building, 1400 Independence Avenue, SW, Washington, D.C., 20250-9410, or call 202-720-5964 (voice or TDD). USDA is an equal opportunity provider and employer.

ACCESS TO REPORTS!!

For your convenience, there are several ways to obtain NASS reports, data products, and services:

INTERNET ACCESS

All NASS reports are available free of charge on the worldwide Internet. For access, connect to the Internet and go to the NASS Home Page at: <http://www.usda.gov/nass/>. Select "Today's Reports" or Publications and then Reports Calendar or Publications and then Search, by Title or Subject.

E-MAIL SUBSCRIPTION

All NASS reports are available by subscription free of charge direct to your e-mail address. Starting with the NASS Home Page at <http://www.usda.gov/nass/>, click on **Publications**, then click on the **Subscribe by E-mail** button which takes you to the page describing e-mail delivery of reports. Finally, click on **Go to the Subscription Page** and follow the instructions.

AUTOFAX ACCESS

NASSFax service is available for some reports from your fax machine. Please call 202-720-2000, using the handset attached to your fax. Respond to the voice prompts. Document 0411 is a list of available reports.

PRINTED REPORTS OR DATA PRODUCTS

CALL OUR TOLL-FREE ORDER DESK: 800-999-6779 (U.S. and Canada)
Other areas, please call 703-605-6220 FAX: 703-605-6900
(Visa, MasterCard, check, or money order acceptable for payment.)

ASSISTANCE

For **assistance** with general agricultural statistics or further information about NASS or its products or services, contact the **Agricultural Statistics Hotline** at **800-727-9540**, 7:30 a.m. to 4:00 p.m. ET, or e-mail: nass@nass.usda.gov.

Competing in the 21st Century

Agricultural Outlook Forum 2003



February 20-21, 2003

Crystal Gateway

Marriott Hotel

Arlington, Virginia

**2003 Commodity Prospects
Emerging Export Competitors
Farming under New Programs
Coping with Regulations
Shifting consumer Preferences
Ensuring Food Safety
Impact of El Nino**

Sharpen your strategic focus at USDA's 79th annual Agricultural Outlook Forum. Note experts, industry leaders and producers will discuss many facets of competing in domestic and world markets.

The program will examine growing competition from Central and Eastern Europe, Brazil and Asia, as well as progress in WTO negotiations.

Focus sessions will highlight many challenges producers face in the competitive arena, ranging from the growing complexity and cost of regulation, to dealing with food safety and changing eating habits.

As always, leading analysts will be on hand to debate planting, trade and price prospects for farm commodities for the year ahead. Attendees will receive new 10-year commodity projections from USDA.

Networking opportunities abound at the Forum, which attracted 1,400 attendees last February. Register now for the best value. See full details at www.usda.gov/oce.

www.usda.gov/oce agforum@oce.usda.gov (877) 891-2208 toll free