



# Cattle on Feed

---

Released February 14, 2003, by the National Agricultural Statistics Service (NASS), Agricultural Statistics Board, U.S. Department of Agriculture. For information on "Cattle on Feed" call Steve Anderson at (202) 720-3040, office hours 7:30 a.m. to 4:00 p.m. ET.

## U.S. Cattle on Feed Down 8 Percent

**Cattle and calves on feed** for slaughter market in the United States for feedlots with capacity of 1,000 or more head totaled 10.7 million head on February 1, 2003. The inventory was 8 percent below February 1, 2002 and 11 percent below February 1, 2001.

**Placements** in feedlots during January totaled 2.14 million, 2 percent below 2002 and 6 percent below 2001. Net placements were 2.06 million. During January, placements of cattle and calves weighing less than 600 pounds were 433,000, 600-699 pounds were 587,000, 700-799 pounds were 706,000, and 800 pounds and greater were 409,000.

**Marketings** of fed cattle during January totaled 1.97 million, down 5 percent from 2002 and down 4 percent from 2001.

**Other disappearance** totaled 75,000 during January, 16 percent below 2002 and 4 percent below 2001.

## 2002 Cattle on Feed and Annual Size Group Estimates

This report contains the 2002 monthly cattle on feed estimates for feedlots with capacity of 1,000 or more head. Also included are the number of feedlots, inventory, and annual marketings by size group for 2001 and 2002. Data for total U.S. capacity of 1,000 or more head feedlots are also published in this issue. These data are measured by the number of head.

**Cattle and calves on feed** for slaughter market in the United States for feedlots with capacity of 1,000 or more head represented 82.0 percent of all cattle and calves on feed in the United States on January 1, 2003, down from 83.4 percent on January 1, 2002.

**Marketings** of fed cattle for feedlots with capacity of 1,000 or more head during 2002 represented 86.3 percent all cattle marketed from feedlots in the United States, down from 87.0 percent during 2001.

**Cattle on Feed: Number on Feed, Placements, Marketings, and  
Other Disappearance, 1,000+ Capacity Feedlots,  
United States, February 1, 2001-2003**

| Item  | Number            |                   |                   | 2003 as % of   |                |
|---|-------------------|-------------------|-------------------|----------------|----------------|
|   | 2001              | 2002              | 2003              | 2001           | 2002           |
|   | <i>1,000 Head</i> | <i>1,000 Head</i> | <i>1,000 Head</i> | <i>Percent</i> | <i>Percent</i> |
| On Feed Jan 1 <sup>1</sup>                  | 11,798            | 11,565            | *10,593           | 90             | 92             |
| Placed on Feed During Jan                   | 2,263             | 2,179             | 2,135             | 94             | 98             |
| Fed Cattle Marketed During Jan              | 2,042             | 2,083             | 1,970             | 96             | 95             |
| Other Disappearance During Jan <sup>2</sup> | 78                | 89                | 75                | 96             | 84             |
| On Feed Feb 1 <sup>1</sup>                  | 11,941            | 11,572            | 10,683            | 89             | 92             |

\* Revised.

<sup>1</sup> Cattle and calves on feed are animals for slaughter market being fed a ration of grain or other concentrates and are expected to produce a carcass that will grade select or better.

<sup>2</sup> Includes death loss, movement from feedlots to pasture, and shipments to other feedlots for further feeding.

**Cattle on Feed: Number on Feed, Placements, Marketings, and  
Other Disappearance, 1,000+ Capacity Feedlots,  
United States, January 1, 2001-2003**

| Item  | Number            |                   |                   | 2003 as % of   |                |
|---|-------------------|-------------------|-------------------|----------------|----------------|
|   | 2001              | 2002              | 2003              | 2001           | 2002           |
|   | <i>1,000 Head</i> | <i>1,000 Head</i> | <i>1,000 Head</i> | <i>Percent</i> | <i>Percent</i> |
| On Feed Dec 1 <sup>1</sup>                  | 11,948            | 11,891            | 10,898            | 91             | 92             |
| Placed on Feed During Dec                   | 1,699             | 1,578             | *1,595            | 94             | 101            |
| Fed Cattle Marketed During Dec              | 1,754             | 1,811             | 1,801             | 103            | 99             |
| Other Disappearance During Dec <sup>2</sup> | 95                | 93                | 99                | 104            | 106            |
| On Feed Jan 1 <sup>1</sup>                  | 11,798            | 11,565            | *10,593           | 90             | 92             |

\* Revised.

<sup>1</sup> Cattle and calves on feed are animals for slaughter market being fed a ration of grain or other concentrates and are expected to produce a carcass that will grade select or better.

<sup>2</sup> Includes death loss, movement from feedlots to pasture, and shipments to other feedlots for further feeding.

**Cattle on Feed: Number on Feed by Class, 1,000+ Capacity Feedlots,  
United States, January 1, 2001-2003**

| Item                      | Number            |                   |                   | 2003 as % of   |                |
|---------------------------|-------------------|-------------------|-------------------|----------------|----------------|
|                           | 2001              | 2002              | 2003              | 2001           | 2002           |
|                           | <i>1,000 Head</i> | <i>1,000 Head</i> | <i>1,000 Head</i> | <i>Percent</i> | <i>Percent</i> |
| Class on Feed Jan 1       |                   |                   |                   |                |                |
| Steers and Steer Calves   | 7,018             | 7,103             | *6,537            | 93             | 92             |
| Heifers and Heifer Calves | 4,696             | 4,375             | 3,978             | 85             | 91             |
| Cows and Bulls            | 84                | 87                | 78                | 93             | 90             |

\* Revised.

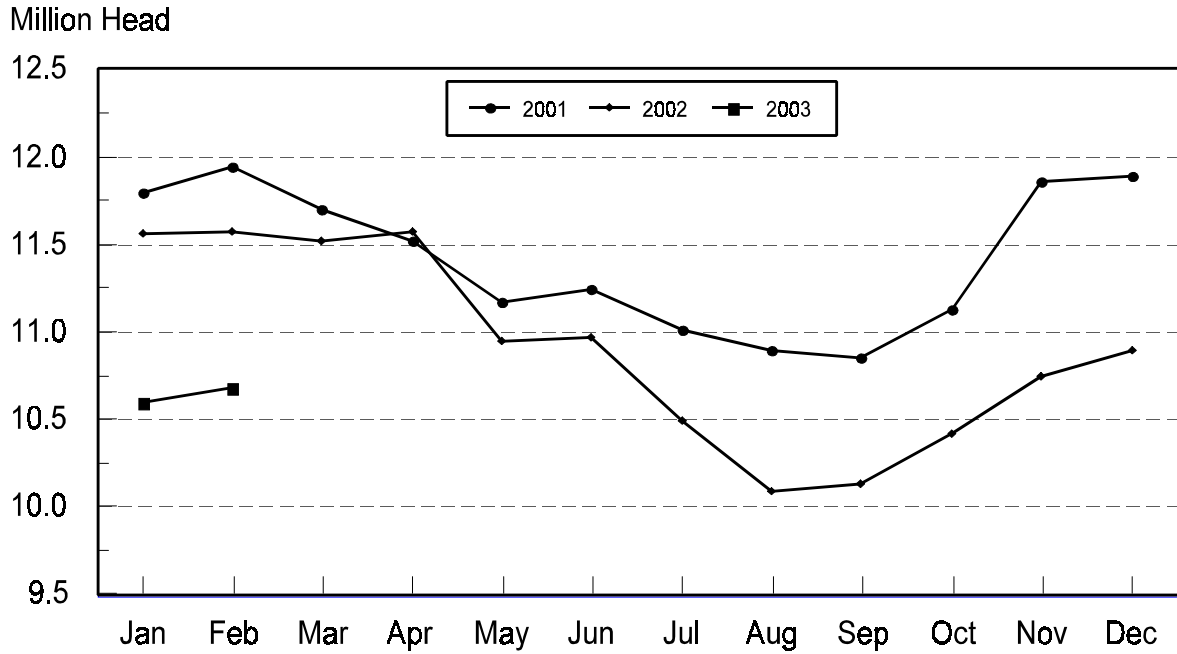
**Cattle on Feed: Number on Feed, 1,000+ Capacity Feedlots,  
by Month, State, and United States 2002-2003<sup>1</sup>**

| State   | Feb 1, 2002       | Jan 1, 2003       | Feb 1, 2003       |                |                |
|---------|-------------------|-------------------|-------------------|----------------|----------------|
|         |                   |                   | Number            | as % of 2002   | as % of Jan    |
|         | <i>1,000 Head</i> | <i>1,000 Head</i> | <i>1,000 Head</i> | <i>Percent</i> | <i>Percent</i> |
| AZ      | 311               | 289               | 291               | 94             | 101            |
| CA      | 475               | 490               | 475               | 100            | 97             |
| CO      | 1,180             | 1,020             | 1,030             | 87             | 101            |
| ID      | 320               | 295               | 285               | 89             | 97             |
| IA      | 395               | 355               | 360               | 91             | 101            |
| KS      | 2,450             | 2,200             | 2,220             | 91             | 101            |
| NE      | 2,290             | 2,140             | 2,220             | 97             | 104            |
| NM      | 109               | 119               | 112               | 103            | 94             |
| OK      | 350               | 330               | 325               | 93             | 98             |
| SD      | 200               | 205               | 215               | 108            | 105            |
| TX      | 2,850             | 2,630             | 2,630             | 92             | 100            |
| WA      | 237               | *185              | 180               | 76             | 97             |
| Oth Sts | 405               | 335               | 340               | 84             | 101            |
| US      | 11,572            | *10,593           | 10,683            | 92             | 101            |

\* Revised.

<sup>1</sup> Cattle and calves on feed are animals for slaughter market being fed a ration of grain or other concentrates and are expected to produce a carcass that will grade select or better.

**United States Cattle on Feed  
1,000+ Capacity Feedlots**



**Cattle on Feed: Number Placed on Feed, 1,000+ Capacity Feedlots,  
by Month, State, and United States 2002-2003**

| State   | During<br>Jan 2002 | During<br>Dec 2002 | During Jan 2003   |                 |                |
|---------|--------------------|--------------------|-------------------|-----------------|----------------|
|         |                    |                    | Number            | as % of<br>2002 | as % of<br>Dec |
|         | <i>1,000 Head</i>  | <i>1,000 Head</i>  | <i>1,000 Head</i> | <i>Percent</i>  | <i>Percent</i> |
| AZ      | 32                 | 25                 | 29                | 91              | 116            |
| CA      | 59                 | 55                 | 58                | 98              | 105            |
| CO      | 225                | 145                | 235               | 104             | 162            |
| ID      | 57                 | 44                 | 56                | 98              | 127            |
| IA      | 91                 | 65                 | 69                | 76              | 106            |
| KS      | 530                | 390                | 540               | 102             | 138            |
| NE      | 490                | 340                | 480               | 98              | 141            |
| NM      | 11                 | 12                 | 8                 | 73              | 67             |
| OK      | 67                 | 34                 | 46                | 69              | 135            |
| SD      | 46                 | 38                 | 53                | 115             | 139            |
| TX      | 480                | 360                | 450               | 94              | 125            |
| WA      | 41                 | *32                | 36                | 88              | 113            |
| Oth Sts | 50                 | 55                 | 75                | 150             | 136            |
| US      | 2,179              | *1,595             | 2,135             | 98              | 134            |

\* Revised.

**Cattle on Feed: Number Placed on Feed by Weight Group, 1,000+ Capacity  
Feedlots, by Month, State, and United States, 2001-2003**

| State   | During January    |                   |                   |                   |                   |                   |                   |                   |                   |                   |
|---------|-------------------|-------------------|-------------------|-------------------|-------------------|-------------------|-------------------|-------------------|-------------------|-------------------|
|         | Under 600         |                   | 600-699           |                   | 700-799           |                   | 800 Plus          |                   | Total             |                   |
|         | 2002              | 2003              | 2002              | 2003              | 2002              | 2003              | 2002              | 2003              | 2002              | 2003              |
|         | <i>1,000 Head</i> | <i>1,000 Head</i> | <i>1,000 Head</i> | <i>1,000 Head</i> | <i>1,000 Head</i> | <i>1,000 Head</i> | <i>1,000 Head</i> | <i>1,000 Head</i> | <i>1,000 Head</i> | <i>1,000 Head</i> |
| CO      | 30                | 43                | 74                | 52                | 84                | 100               | 37                | 40                | 225               | 235               |
| KS      | 55                | 65                | 170               | 185               | 205               | 200               | 100               | 90                | 530               | 540               |
| NE      | 61                | 70                | 139               | 135               | 170               | 161               | 120               | 114               | 490               | 480               |
| TX      | 105               | 135               | 140               | 130               | 165               | 135               | 70                | 50                | 480               | 450               |
| Oth Sts | 130               | 120               | 95                | 85                | 114               | 110               | 115               | 115               | 454               | 430               |
| US      | 381               | 433               | 618               | 587               | 738               | 706               | 442               | 409               | 2,179             | 2,135             |
|         | During December   |                   |                   |                   |                   |                   |                   |                   |                   |                   |
|         | Under 600         |                   | 600-699           |                   | 700-799           |                   | 800 Plus          |                   | Total             |                   |
|         | 2001              | 2002              | 2001              | 2002              | 2001              | 2002              | 2001              | 2002              | 2001              | 2002              |
|         | <i>1,000 Head</i> | <i>1,000 Head</i> | <i>1,000 Head</i> | <i>1,000 Head</i> | <i>1,000 Head</i> | <i>1,000 Head</i> | <i>1,000 Head</i> | <i>1,000 Head</i> | <i>1,000 Head</i> | <i>1,000 Head</i> |
| CO      | 36                | 33                | 52                | 41                | 50                | 46                | 27                | 25                | 165               | 145               |
| KS      | 65                | 70                | 120               | 155               | 125               | 105               | 60                | 60                | 370               | 390               |
| NE      | 62                | 64                | 93                | 103               | 80                | 102               | 65                | 71                | 300               | 340               |
| TX      | 115               | 134               | 115               | 133               | 85                | 72                | 45                | 21                | 360               | 360               |
| Oth Sts | 140               | 120               | 95                | *80               | 73                | 82                | 75                | 78                | 383               | *360              |
| US      | 418               | 421               | 475               | *512              | 413               | 407               | 272               | 255               | 1,578             | *1,595            |

\* Revised.

**Cattle on Feed: Number Marketed, 1,000+ Capacity Feedlots,  
by Month, State, and United States 2002-2003**

| State   | During<br>Jan 2002 | During<br>Dec 2002 | During Jan 2003   |                 |                |
|---------|--------------------|--------------------|-------------------|-----------------|----------------|
|         |                    |                    | Number            | as % of<br>2002 | as % of<br>Dec |
|         | <i>1,000 Head</i>  | <i>1,000 Head</i>  | <i>1,000 Head</i> | <i>Percent</i>  | <i>Percent</i> |
| AZ      | 25                 | 27                 | 24                | 96              | 89             |
| CA      | 57                 | 55                 | 67                | 118             | 122            |
| CO      | 215                | 185                | 215               | 100             | 116            |
| ID      | 65                 | 47                 | 65                | 100             | 138            |
| IA      | 50                 | 59                 | 62                | 124             | 105            |
| KS      | 540                | 470                | 500               | 93              | 106            |
| NE      | 405                | 370                | 390               | 96              | 105            |
| NM      | 9                  | 15                 | 14                | 156             | 93             |
| OK      | 74                 | 41                 | 49                | 66              | 120            |
| SD      | 38                 | 27                 | 42                | 111             | 156            |
| TX      | 500                | 400                | 435               | 87              | 109            |
| WA      | 50                 | 40                 | 39                | 78              | 98             |
| Oth Sts | 55                 | 65                 | 68                | 124             | 105            |
| US      | 2,083              | 1,801              | 1,970             | 95              | 109            |

**Cattle on Feed: Other Disappearance, 1,000+ Capacity Feedlots,  
by Month, State, and United States 2002-2003 <sup>1</sup>**

| State   | During<br>Jan 2002 | During<br>Dec 2002 | During Jan 2003   |                 |                |
|---------|--------------------|--------------------|-------------------|-----------------|----------------|
|         |                    |                    | Number            | as % of<br>2002 | as % of<br>Dec |
|         | <i>1,000 Head</i>  | <i>1,000 Head</i>  | <i>1,000 Head</i> | <i>Percent</i>  | <i>Percent</i> |
| AZ      | 1                  | 4                  | 3                 | 300             | 75             |
| CA      | 7                  | 10                 | 6                 | 86              | 60             |
| CO      | 10                 | 10                 | 10                | 100             | 100            |
| ID      | 2                  | 2                  | 1                 | 50              | 50             |
| IA      | 1                  | 1                  | 2                 | 200             | 200            |
| KS      | 20                 | 20                 | 20                | 100             | 100            |
| NE      | 25                 | 10                 | 10                | 40              | 100            |
| NM      | 1                  | 1                  | 1                 | 100             | 100            |
| OK      | 3                  | 3                  | 2                 | 67              | 67             |
| SD      | 3                  | 1                  | 1                 | 33              | 100            |
| TX      | 10                 | 30                 | 15                | 150             | 50             |
| WA      | 1                  | 2                  | 2                 | 200             | 100            |
| Oth Sts | 5                  | 5                  | 2                 | 40              | 40             |
| US      | 89                 | 99                 | 75                | 84              | 76             |

<sup>1</sup> Includes death loss, movement from feedlots to pasture, and shipments to other feedlots for further feeding.

**Cattle on Feed: Number on Feed, 1,000+ Capacity Feedlots,  
by Month, State, 7-States, and United States, 2002 <sup>1</sup>**

| State    | Jan 1             | Feb 1             | Mar 1             | Apr 1             | May 1             | Jun 1             |
|----------|-------------------|-------------------|-------------------|-------------------|-------------------|-------------------|
|          | <i>1,000 Head</i> | <i>1,000 Head</i> | <i>1,000 Head</i> | <i>1,000 Head</i> | <i>1,000 Head</i> | <i>1,000 Head</i> |
| AZ       | 305               | 311               | 310               | 314               | 304               | 299               |
| CA       | 480               | 475               | 475               | 485               | 480               | 485               |
| CO       | 1,180             | 1,180             | 1,150             | 1,120             | 1,080             | 1,090             |
| ID       | 330               | 320               | 315               | 325               | 315               | 310               |
| IA       | 355               | 395               | 400               | 395               | 385               | 375               |
| KS       | 2,480             | 2,450             | 2,420             | 2,420             | 2,270             | 2,270             |
| NE       | 2,230             | 2,290             | 2,300             | 2,300             | 2,170             | 2,060             |
| NM       | 108               | 109               | 109               | 113               | 97                | 96                |
| OK       | 360               | 350               | 345               | 360               | 340               | 340               |
| SD       | 195               | 200               | 210               | 220               | 215               | 205               |
| TX       | 2,880             | 2,850             | 2,850             | 2,900             | 2,700             | 2,870             |
| WA       | 247               | 237               | 229               | 230               | 215               | 200               |
| 7 States | 9,910             | 9,951             | 9,905             | 9,934             | 9,389             | 9,449             |
| Oth Sts  | 415               | 405               | 405               | 395               | 380               | 370               |
| US       | 11,565            | 11,572            | 11,518            | 11,577            | 10,951            | 10,970            |
|          | Jul 1             | Aug 1             | Sep 1             | Oct 1             | Nov 1             | Dec 1             |
|          | <i>1,000 Head</i> | <i>1,000 Head</i> | <i>1,000 Head</i> | <i>1,000 Head</i> | <i>1,000 Head</i> | <i>1,000 Head</i> |
| AZ       | 291               | 285               | 285               | 288               | 290               | 295               |
| CA       | 485               | 485               | 490               | 495               | 490               | 500               |
| CO       | 1,030             | 990               | 1,000             | 1,030             | 1,060             | 1,070             |
| ID       | 300               | 285               | 275               | 280               | 295               | 300               |
| IA       | 350               | 320               | 310               | 315               | 335               | 350               |
| KS       | 2,160             | 2,140             | 2,230             | 2,280             | 2,300             | 2,300             |
| NE       | 1,890             | 1,790             | 1,850             | 1,960             | 2,110             | 2,180             |
| NM       | 101               | 109               | 114               | 113               | 117               | 123               |
| OK       | 325               | 310               | 305               | 330               | 340               | 340               |
| SD       | 175               | 160               | 145               | 150               | 170               | 195               |
| TX       | 2,850             | 2,740             | 2,680             | 2,720             | 2,730             | 2,700             |
| WA       | 180               | 165               | 155               | 170               | 185               | 195               |
| 7 States | 9,056             | 8,750             | 8,845             | 9,088             | 9,315             | 9,395             |
| Oth Sts  | 350               | 310               | 290               | 285               | 320               | 350               |
| US       | 10,487            | 10,089            | 10,129            | 10,416            | 10,742            | 10,898            |

<sup>1</sup> Cattle and calves on feed are animals for slaughter market being fed a ration of grain or other concentrates and are expected to produce a carcass that will grade select or better.



**Cattle on Feed: Number Placed on Feed by Weight Group, 1,000+ Capacity  
Feedlots, by Month, State, and United States, 2001-2002**

| State   | During December   |                   |                   |                   |                   |
|---------|-------------------|-------------------|-------------------|-------------------|-------------------|
|         | Under 600         | 600-699           | 700-799           | 800 Plus          | Total             |
|         | <i>1,000 Head</i> | <i>1,000 Head</i> | <i>1,000 Head</i> | <i>1,000 Head</i> | <i>1,000 Head</i> |
| CO      | 36                | 52                | 50                | 27                | 165               |
| KS      | 65                | 120               | 125               | 60                | 370               |
| NE      | 62                | 93                | 80                | 65                | 300               |
| TX      | 115               | 115               | 85                | 45                | 360               |
| Oth Sts | 140               | 95                | 73                | 75                | 383               |
| US      | 418               | 475               | 413               | 272               | 1,578             |
|         | During January    |                   |                   |                   |                   |
|         | Under 600         | 600-699           | 700-799           | 800 Plus          | Total             |
|         | <i>1,000 Head</i> | <i>1,000 Head</i> | <i>1,000 Head</i> | <i>1,000 Head</i> | <i>1,000 Head</i> |
| CO      | 30                | 74                | 84                | 37                | 225               |
| KS      | 55                | 170               | 205               | 100               | 530               |
| NE      | 61                | 139               | 170               | 120               | 490               |
| TX      | 105               | 140               | 165               | 70                | 480               |
| Oth Sts | 130               | 95                | 114               | 115               | 454               |
| US      | 381               | 618               | 738               | 442               | 2,179             |
|         | During February   |                   |                   |                   |                   |
|         | Under 600         | 600-699           | 700-799           | 800 Plus          | Total             |
|         | <i>1,000 Head</i> | <i>1,000 Head</i> | <i>1,000 Head</i> | <i>1,000 Head</i> | <i>1,000 Head</i> |
| CO      | 21                | 55                | 72                | 42                | 190               |
| KS      | 40                | 105               | 170               | 120               | 435               |
| NE      | 30                | 86                | 137               | 117               | 370               |
| TX      | 80                | 95                | 165               | 70                | 410               |
| Oth Sts | 90                | 70                | 120               | 125               | 405               |
| US      | 261               | 411               | 664               | 474               | 1,810             |

--continued



**Cattle on Feed: Number Placed on Feed by Weight Group, 1,000+ Capacity  
Feedlots, by Month, State, and United States, 2001-2002 (continued)**

| State   | During March      |                   |                   |                   |                   |
|---------|-------------------|-------------------|-------------------|-------------------|-------------------|
|         | Under 600         | 600-699           | 700-799           | 800 Plus          | Total             |
|         | <i>1,000 Head</i> | <i>1,000 Head</i> | <i>1,000 Head</i> | <i>1,000 Head</i> | <i>1,000 Head</i> |
| CO      | 21                | 41                | 72                | 66                | 200               |
| KS      | 45                | 75                | 180               | 135               | 435               |
| NE      | 33                | 63                | 100               | 114               | 310               |
| TX      | 105               | 120               | 225               | 110               | 560               |
| Oth Sts | 110               | 73                | 125               | 140               | 448               |
| US      | 314               | 372               | 702               | 565               | 1,953             |
|         | During April      |                   |                   |                   |                   |
|         | Under 600         | 600-699           | 700-799           | 800 Plus          | Total             |
|         | <i>1,000 Head</i> | <i>1,000 Head</i> | <i>1,000 Head</i> | <i>1,000 Head</i> | <i>1,000 Head</i> |
| CO      | 9                 | 33                | 65                | 58                | 165               |
| KS      | 20                | 50                | 125               | 125               | 320               |
| NE      | 26                | 49                | 82                | 103               | 260               |
| TX      | 70                | 80                | 145               | 70                | 365               |
| Oth Sts | 85                | 43                | 95                | 120               | 343               |
| US      | 210               | 255               | 512               | 476               | 1,453             |
|         | During May        |                   |                   |                   |                   |
|         | Under 600         | 600-699           | 700-799           | 800 Plus          | Total             |
|         | <i>1,000 Head</i> | <i>1,000 Head</i> | <i>1,000 Head</i> | <i>1,000 Head</i> | <i>1,000 Head</i> |
| CO      | 14                | 41                | 73                | 82                | 210               |
| KS      | 50                | 100               | 200               | 170               | 520               |
| NE      | 26                | 47                | 112               | 165               | 350               |
| TX      | 150               | 205               | 265               | 140               | 760               |
| Oth Sts | 110               | 52                | 110               | 155               | 427               |
| US      | 350               | 445               | 760               | 712               | 2,267             |

--continued

**Cattle on Feed: Number Placed on Feed by Weight Group, 1,000+ Capacity  
Feedlots, by Month, State, and United States, 2001-2002 (continued)**

| State   | During June       |                   |                   |                   |                   |
|---------|-------------------|-------------------|-------------------|-------------------|-------------------|
|         | Under 600         | 600-699           | 700-799           | 800 Plus          | Total             |
|         | <i>1,000 Head</i> | <i>1,000 Head</i> | <i>1,000 Head</i> | <i>1,000 Head</i> | <i>1,000 Head</i> |
| CO      | 23                | 43                | 48                | 41                | 155               |
| KS      | 50                | 85                | 155               | 90                | 380               |
| NE      | 33                | 49                | 85                | 128               | 295               |
| TX      | 120               | 130               | 145               | 70                | 465               |
| Oth Sts | 115               | 49                | 80                | 105               | 349               |
| US      | 341               | 356               | 513               | 434               | 1,644             |
|         | During July       |                   |                   |                   |                   |
|         | Under 600         | 600-699           | 700-799           | 800 Plus          | Total             |
|         | <i>1,000 Head</i> | <i>1,000 Head</i> | <i>1,000 Head</i> | <i>1,000 Head</i> | <i>1,000 Head</i> |
| CO      | 28                | 37                | 65                | 60                | 190               |
| KS      | 70                | 110               | 200               | 130               | 510               |
| NE      | 36                | 83                | 121               | 160               | 400               |
| TX      | 120               | 85                | 125               | 60                | 390               |
| Oth Sts | 115               | 50                | 80                | 105               | 350               |
| US      | 369               | 365               | 591               | 515               | 1,840             |
|         | During August     |                   |                   |                   |                   |
|         | Under 600         | 600-699           | 700-799           | 800 Plus          | Total             |
|         | <i>1,000 Head</i> | <i>1,000 Head</i> | <i>1,000 Head</i> | <i>1,000 Head</i> | <i>1,000 Head</i> |
| CO      | 35                | 46                | 87                | 77                | 245               |
| KS      | 110               | 140               | 195               | 125               | 570               |
| NE      | 75                | 69                | 123               | 178               | 445               |
| TX      | 175               | 160               | 125               | 70                | 530               |
| Oth Sts | 130               | 68                | 95                | 135               | 428               |
| US      | 525               | 483               | 625               | 585               | 2,218             |

--continued

**Cattle on Feed: Number Placed on Feed by Weight Group, 1,000+ Capacity  
Feedlots, by Month, State, and United States, 2001-2002 (continued)**

| State   | During September  |                   |                   |                   |                   |
|---------|-------------------|-------------------|-------------------|-------------------|-------------------|
|         | Under 600         | 600-699           | 700-799           | 800 Plus          | Total             |
|         | <i>1,000 Head</i> | <i>1,000 Head</i> | <i>1,000 Head</i> | <i>1,000 Head</i> | <i>1,000 Head</i> |
| CO      | 51                | 53                | 78                | 73                | 255               |
| KS      | 105               | 125               | 140               | 90                | 460               |
| NE      | 133               | 74                | 106               | 137               | 450               |
| TX      | 170               | 155               | 145               | 60                | 530               |
| Oth Sts | 155               | 80                | 113               | 145               | 493               |
| US      | 614               | 487               | 582               | 505               | 2,188             |
|         | During October    |                   |                   |                   |                   |
|         | Under 600         | 600-699           | 700-799           | 800 Plus          | Total             |
|         | <i>1,000 Head</i> | <i>1,000 Head</i> | <i>1,000 Head</i> | <i>1,000 Head</i> | <i>1,000 Head</i> |
| CO      | 94                | 49                | 56                | 51                | 250               |
| KS      | 120               | 145               | 120               | 70                | 455               |
| NE      | 200               | 134               | 87                | 99                | 520               |
| TX      | 175               | 200               | 165               | 60                | 600               |
| Oth Sts | 220               | 110               | 94                | 140               | 564               |
| US      | 809               | 638               | 522               | 420               | 2,389             |
|         | During November   |                   |                   |                   |                   |
|         | Under 600         | 600-699           | 700-799           | 800 Plus          | Total             |
|         | <i>1,000 Head</i> | <i>1,000 Head</i> | <i>1,000 Head</i> | <i>1,000 Head</i> | <i>1,000 Head</i> |
| CO      | 58                | 60                | 43                | 29                | 190               |
| KS      | 95                | 155               | 110               | 60                | 420               |
| NE      | 113               | 142               | 70                | 85                | 410               |
| TX      | 141               | 188               | 114               | 27                | 470               |
| Oth Sts | 182               | 115               | 80                | 110               | 487               |
| US      | 589               | 660               | 417               | 311               | 1,977             |





**Cattle on Feed: Number on Feed by Class, 1,000+ Capacity Feedlots,  
by Quarter, State, 7-States, and United States, 2002**

| State                 | Steers & Steer Calves |                   |                   |                   | Heifers & Heifer Calves |                   |                   |                   |
|-----------------------|-----------------------|-------------------|-------------------|-------------------|-------------------------|-------------------|-------------------|-------------------|
|                       | Jan 1                 | Apr 1             | Jul 1             | Oct 1             | Jan 1                   | Apr 1             | Jul 1             | Oct 1             |
|                       | <i>1,000 Head</i>     | <i>1,000 Head</i> | <i>1,000 Head</i> | <i>1,000 Head</i> | <i>1,000 Head</i>       | <i>1,000 Head</i> | <i>1,000 Head</i> | <i>1,000 Head</i> |
| AZ                    | 302                   | 311               | 286               | 281               | 3                       | 3                 | 5                 | 7                 |
| CA                    | 440                   | 445               | 440               | 455               | 40                      | 40                | 45                | 38                |
| CO                    | 675                   | 645               | 560               | 585               | 500                     | 470               | 465               | 440               |
| ID                    | 216                   | 215               | 204               | 194               | 107                     | 110               | 94                | 86                |
| IA                    | 230                   | 260               | 230               | 200               | 124                     | 134               | 119               | 114               |
| KS                    | 1,400                 | 1,405             | 1,200             | 1,240             | 1,070                   | 1,010             | 950               | 1,030             |
| NE                    | 1,330                 | 1,340             | 1,090             | 1,030             | 855                     | 940               | 780               | 890               |
| NM                    | 50                    | 53                | 53                | 60                | 58                      | 60                | 48                | 53                |
| OK                    | 210                   | 215               | 195               | 200               | 150                     | 142               | 122               | 125               |
| SD                    | 99                    | 118               | 90                | 68                | 88                      | 100               | 78                | 75                |
| TX                    | 1,700                 | 1,775             | 1,735             | 1,620             | 1,177                   | 1,120             | 1,110             | 1,097             |
| WA                    | 151                   | 150               | 114               | 110               | 96                      | 80                | 65                | 60                |
| 7 States              | 6,077                 | 6,181             | 5,541             | 5,411             | 3,769                   | 3,717             | 3,474             | 3,616             |
| Oth Sts               | 300                   | 300               | 260               | 215               | 107                     | 93                | 86                | 69                |
| US                    | 7,103                 | 7,232             | 6,457             | 6,258             | 4,375                   | 4,302             | 3,967             | 4,084             |
| <b>Cows and Bulls</b> |                       |                   |                   |                   |                         |                   |                   |                   |
|                       | Jan 1                 | Apr 1             | Jul 1             | Oct 1             |                         |                   |                   |                   |
|                       | <i>1,000 Head</i>     | <i>1,000 Head</i> | <i>1,000 Head</i> | <i>1,000 Head</i> |                         |                   |                   |                   |
| AZ                    | 0                     | 0                 | 0                 | 0                 |                         |                   |                   |                   |
| CA                    | 0                     | 0                 | 0                 | 0                 |                         |                   |                   |                   |
| CO                    | 5                     | 5                 | 5                 | 5                 |                         |                   |                   |                   |
| ID                    | 7                     | 7                 | 0                 | 2                 |                         |                   |                   |                   |
| IA                    | 1                     | 1                 | 1                 | 1                 |                         |                   |                   |                   |
| KS                    | 10                    | 10                | 5                 | 10                |                         |                   |                   |                   |
| NE                    | 45                    | 45                | 20                | 20                |                         |                   |                   |                   |
| NM                    | 0                     | 0                 | 0                 | 0                 |                         |                   |                   |                   |
| OK                    | 0                     | 0                 | 3                 | 8                 |                         |                   |                   |                   |
| SD                    | 8                     | 8                 | 2                 | 7                 |                         |                   |                   |                   |
| TX                    | 3                     | 3                 | 5                 | 5                 |                         |                   |                   |                   |
| WA                    | 0                     | 0                 | 0                 | 1                 |                         |                   |                   |                   |
| 7 States              | 64                    | 64                | 36                | 41                |                         |                   |                   |                   |
| Oth Sts               | 8                     | 8                 | 2                 | 4                 |                         |                   |                   |                   |
| US                    | 87                    | 87                | 43                | 63                |                         |                   |                   |                   |

**Cattle on Feed: Number of Feedlots, Inventory, and Marketings,  
by Size of Feedlot, State, and United States 2001-2002 <sup>1</sup>**

| Year and State | Feedlot Capacity in Number of Head |                   |                   |               |                   |                   |
|----------------|------------------------------------|-------------------|-------------------|---------------|-------------------|-------------------|
|                | 1,000 - 1,999                      |                   |                   | 2,000 - 3,999 |                   |                   |
|                | Lots                               | Inventory         | Cattle Marketed   | Lots          | Inventory         | Cattle Marketed   |
|                | <i>Number</i>                      | <i>1,000 Head</i> | <i>1,000 Head</i> | <i>Number</i> | <i>1,000 Head</i> | <i>1,000 Head</i> |
| 2001           |                                    |                   |                   |               |                   |                   |
| AZ             |                                    |                   |                   |               |                   |                   |
| CA             | <sup>2</sup> 4                     | <sup>2</sup> 4    | <sup>2</sup> 5    |               |                   |                   |
| CO             | 47                                 | 24                | 45                | 39            | 49                | 80                |
| ID             | 11                                 | 6                 | 11                | 13            | 25                | 36                |
| IA             | 190                                | 150               | 220               | 85            | 130               | 210               |
| KS             | 33                                 | 20                | 35                | 48            | 65                | 130               |
| NE             | 280                                | 150               | 310               | 209           | 300               | 580               |
| NM             |                                    |                   |                   |               |                   |                   |
| OK             | <sup>2</sup> 3                     | <sup>2</sup> 3    | <sup>2</sup> 8    |               |                   |                   |
| SD             | 59                                 | 38                | 72                | 44            | 57                | 106               |
| TX             | 6                                  | 3                 | 8                 | 6             | 9                 | 22                |
| WA             | <sup>2</sup> 7                     | <sup>2</sup> 17   | <sup>2</sup> 29   |               |                   |                   |
| Oth Sts        | 180                                | 105               | 155               | 70            | 105               | 175               |
| US             | 811                                | 499               | 857               | 520           | 748               | 1,351             |
| 2002           |                                    |                   |                   |               |                   |                   |
| AZ             |                                    |                   |                   |               |                   |                   |
| CA             | <sup>2</sup> 3                     | <sup>2</sup> 4    | <sup>2</sup> 6    |               |                   |                   |
| CO             | 43                                 | 16                | 45                | 36            | 35                | 70                |
| ID             | 11                                 | 3                 | 11                | 12            | 14                | 33                |
| IA             | 223                                | 131               | 260               | 90            | 139               | 267               |
| KS             | 33                                 | 20                | 40                | 47            | 50                | 120               |
| NE             | 280                                | 150               | 310               | 221           | 300               | 570               |
| NM             |                                    |                   |                   |               |                   |                   |
| OK             | <sup>2</sup> 3                     | <sup>2</sup> 3    | <sup>2</sup> 7    |               |                   |                   |
| SD             | 63                                 | 38                | 90                | 46            | 65                | 120               |
| TX             | 6                                  | 3                 | 10                | 5             | 5                 | 15                |
| WA             | <sup>2</sup> 10                    | <sup>2</sup> 27   | <sup>2</sup> 27   |               |                   |                   |
| Oth Sts        | 185                                | 65                | 130               | 79            | 70                | 150               |
| US             | 850                                | 429               | 899               | 542           | 686               | 1,361             |

See footnote(s) at end of table.

--continued

**Cattle on Feed: Number of Feedlots, Inventory, and Marketings, by  
Size of Feedlot, State, and United States 2001-2002 <sup>1</sup> (continued)**

| Year and State | Feedlot Capacity in Number of Head |                   |                   |                 |                   |                   |
|----------------|------------------------------------|-------------------|-------------------|-----------------|-------------------|-------------------|
|                | 4,000 - 7,999                      |                   |                   | 8,000 - 15,999  |                   |                   |
|                | Lots                               | Inventory         | Cattle Marketed   | Lots            | Inventory         | Cattle Marketed   |
|                | <i>Number</i>                      | <i>1,000 Head</i> | <i>1,000 Head</i> | <i>Number</i>   | <i>1,000 Head</i> | <i>1,000 Head</i> |
| 2001           |                                    |                   |                   |                 |                   |                   |
| AZ             | 2                                  | 6                 | 7                 |                 |                   |                   |
| CA             | 5                                  | 19                | 21                | 4               | 3                 | 3                 |
| CO             | 34                                 | 107               | 190               | 20              | 130               | 250               |
| ID             | 10                                 | 32                | 57                | <sup>2</sup> 16 | <sup>2</sup> 267  | <sup>2</sup> 656  |
| IA             | <sup>2</sup> 25                    | <sup>2</sup> 75   | <sup>2</sup> 186  |                 |                   |                   |
| KS             | 45                                 | 155               | 270               | 37              | 340               | 710               |
| NE             | 126                                | 430               | 850               | 64              | 540               | 1,070             |
| NM             | <sup>2</sup> 6                     | <sup>2</sup> 14   | <sup>2</sup> 33   |                 |                   |                   |
| OK             | 10                                 | 27                | 47                | 5               | 26                | 50                |
| SD             | 18                                 | 48                | 100               | <sup>2</sup> 7  | <sup>2</sup> 52   | <sup>2</sup> 112  |
| TX             | 14                                 | 38                | 90                | 27              | 200               | 450               |
| WA             |                                    |                   |                   | <sup>2</sup> 6  | <sup>2</sup> 67   | <sup>2</sup> 158  |
| Oth Sts        | 35                                 | 105               | 150               | 11              | 38                | 75                |
| US             | 328                                | 1,046             | 1,947             | 192             | 1,400             | 2,885             |
| 2002           |                                    |                   |                   |                 |                   |                   |
| AZ             | 2                                  | 5                 | 7                 |                 |                   |                   |
| CA             | <sup>2</sup> 9                     | <sup>2</sup> 15   | <sup>2</sup> 22   |                 |                   |                   |
| CO             | 33                                 | 97                | 195               | 20              | 109               | 245               |
| ID             | 10                                 | 18                | 40                | <sup>2</sup> 17 | <sup>2</sup> 260  | <sup>2</sup> 644  |
| IA             | <sup>2</sup> 27                    | <sup>2</sup> 85   | <sup>2</sup> 185  |                 |                   |                   |
| KS             | 45                                 | 120               | 275               | 36              | 280               | 700               |
| NE             | 134                                | 425               | 920               | 64              | 465               | 1,070             |
| NM             | <sup>2</sup> 6                     | <sup>2</sup> 19   | <sup>2</sup> 33   |                 |                   |                   |
| OK             | 8                                  | 20                | 54                | 5               | 15                | 42                |
| SD             | 20                                 | 52                | 108               | <sup>2</sup> 7  | <sup>2</sup> 50   | <sup>2</sup> 104  |
| TX             | 15                                 | 32                | 85                | 26              | 175               | 390               |
| WA             |                                    |                   |                   | <sup>2</sup> 6  | <sup>2</sup> 69   | <sup>2</sup> 156  |
| Oth Sts        | 40                                 | 80                | 185               | 12              | 45                | 110               |
| US             | 344                                | 959               | 2,051             | 191             | 1,213             | 2,832             |

See footnote(s) at end of table.

--continued



**Cattle on Feed: Number of Feedlots, Inventory, and Marketings, by  
Size of Feedlot, State, and United States 2001-2002 <sup>1</sup> (continued)**

| Year and State | Feedlot Capacity in Number of Head |                   |                   |                 |                   |                   |
|----------------|------------------------------------|-------------------|-------------------|-----------------|-------------------|-------------------|
|                | 16,000 - 31,999                    |                   |                   | 32,000 and Over |                   |                   |
|                | Lots                               | Inventory         | Cattle Marketed   | Lots            | Inventory         | Cattle Marketed   |
|                | <i>Number</i>                      | <i>1,000 Head</i> | <i>1,000 Head</i> | <i>Number</i>   | <i>1,000 Head</i> | <i>1,000 Head</i> |
| 2001           |                                    |                   |                   |                 |                   |                   |
| AZ             | 2                                  | 33                | 50                | 3               | 266               | 291               |
| CA             | 5                                  | 93                | 110               | 6               | 361               | 467               |
| CO             | 13                                 | 230               | 490               | 12              | 640               | 1,440             |
| ID             |                                    |                   |                   |                 |                   |                   |
| IA             |                                    |                   |                   |                 |                   |                   |
| KS             | 35                                 | 710               | 1,560             | 27              | 1,190             | 2,590             |
| NE             | 34                                 | 520               | 1,150             | 7               | 290               | 615               |
| NM             | 3                                  | 53                | 83                | 1               | 41                | 59                |
| OK             | 2                                  | 46                | 107               | 7               | 258               | 620               |
| SD             |                                    |                   |                   |                 |                   |                   |
| TX             | 36                                 | 590               | 1,160             | 49              | 2,040             | 4,300             |
| WA             |                                    |                   |                   | 3               | 163               | 400               |
| Oth Sts        | <sup>2</sup> 4                     | <sup>2</sup> 62   | <sup>2</sup> 137  |                 |                   |                   |
| US             | 141                                | 2,422             | 5,079             | 118             | 5,450             | 11,282            |
| 2002           |                                    |                   |                   |                 |                   |                   |
| AZ             | 2                                  | 29                | 40                | 3               | 255               | 294               |
| CA             | 5                                  | 96                | 131               | 6               | 375               | 512               |
| CO             | 14                                 | 222               | 500               | 12              | 541               | 1,415             |
| ID             |                                    |                   |                   |                 |                   |                   |
| IA             |                                    |                   |                   |                 |                   |                   |
| KS             | 35                                 | 550               | 1,390             | 29              | 1,180             | 2,970             |
| NE             | 33                                 | 505               | 1,100             | 8               | 295               | 640               |
| NM             | 3                                  | 56                | 92                | 1               | 44                | 52                |
| OK             | 2                                  | 45                | 97                | 7               | 247               | 570               |
| SD             |                                    |                   |                   |                 |                   |                   |
| TX             | 35                                 | 505               | 1,180             | 49              | 1,910             | 4,300             |
| WA             |                                    |                   |                   | 3               | 89                | 325               |
| Oth Sts        | <sup>2</sup> 4                     | <sup>2</sup> 75   | <sup>2</sup> 180  |                 |                   |                   |
| US             | 141                                | 2,172             | 4,905             | 121             | 5,134             | 11,591            |

See footnote(s) at end of table.

--continued

**Cattle on Feed: Number of Feedlots, Inventory, and Marketings, by  
Size of Feedlot, State, and United States 2001-2002 <sup>1</sup> (continued)**

| Year and State | Feedlot Capacity in Number of Head |                   |                   |
|----------------|------------------------------------|-------------------|-------------------|
|                | Total - 1,000+ Capacity Feedlots   |                   |                   |
|                | Lots                               | Inventory         | Cattle Marketed   |
|                | <i>Number</i>                      | <i>1,000 Head</i> | <i>1,000 Head</i> |
| 2001           |                                    |                   |                   |
| AZ             | 7                                  | 305               | 348               |
| CA             | 24                                 | 480               | 606               |
| CO             | 165                                | 1,180             | 2,495             |
| ID             | 50                                 | 330               | 760               |
| IA             | 300                                | 355               | 616               |
| KS             | 225                                | 2,480             | 5,295             |
| NE             | 720                                | 2,230             | 4,575             |
| NM             | 10                                 | 108               | 175               |
| OK             | 27                                 | 360               | 832               |
| SD             | 128                                | 195               | 390               |
| TX             | 138                                | 2,880             | 6,030             |
| WA             | 16                                 | 247               | 587               |
| Oth Sts        | 300                                | 415               | 692               |
| US             | 2,110                              | 11,565            | 23,401            |
| 2002           |                                    |                   |                   |
| AZ             | 7                                  | 289               | 341               |
| CA             | 23                                 | 490               | 671               |
| CO             | 158                                | 1,020             | 2,470             |
| ID             | 50                                 | 295               | 728               |
| IA             | 340                                | 355               | 712               |
| KS             | 225                                | 2,200             | 5,495             |
| NE             | 740                                | 2,140             | 4,610             |
| NM             | 10                                 | 119               | 177               |
| OK             | 25                                 | 330               | 770               |
| SD             | 136                                | 205               | 422               |
| TX             | 136                                | 2,630             | 5,980             |
| WA             | 19                                 | 185               | 508               |
| Oth Sts        | 320                                | 335               | 755               |
| US             | 2,189                              | 10,593            | 23,639            |

<sup>1</sup> Number of feedlots is the number of lots operating at anytime during the year. Inventory is the number on hand January 1 of the following year. The United States totals show the actual number of feedlots, inventory, and number of animals marketed in each size group. The sum of the numbers shown by State under a specified size group may or may not add to the United States total for that size group since for some States size groups are combined to avoid disclosing individual operations.

<sup>2</sup> Lots, inventory, and marketings from other size groups are included to avoid disclosing individual operations.

**Cattle on Feed: Feedlot Capacity, 1000+ Capacity Feedlots,  
United States, January 1, 2001-2003 <sup>1</sup>**

| Item | Feedlot Capacity in Number of Head |                   |                   |
|------|------------------------------------|-------------------|-------------------|
|      | 2001                               | 2002              | 2003              |
|      | <i>1,000 Head</i>                  | <i>1,000 Head</i> | <i>1,000 Head</i> |
| US   | 16,500                             | *16,600           | 16,500            |

\* Revised.

<sup>1</sup> Total capacity of all 1000+ capacity feedlots in the U.S.

**Cattle on Feed: Number of Feedlots, Inventory, and Marketings,  
by Size of Feedlot, Region, and United States 2001-2002 <sup>1</sup>**

| Year and State | Feedlot Capacity in Number of Head |                   |                   |                 |                   |                   |
|----------------|------------------------------------|-------------------|-------------------|-----------------|-------------------|-------------------|
|                | 16,000 - 23,999                    |                   |                   | 24,000 - 31,999 |                   |                   |
|                | Lots                               | Inventory         | Cattle Marketed   | Lots            | Inventory         | Cattle Marketed   |
|                | <i>Number</i>                      | <i>1,000 Head</i> | <i>1,000 Head</i> | <i>Number</i>   | <i>1,000 Head</i> | <i>1,000 Head</i> |
| 2001           |                                    |                   |                   |                 |                   |                   |
| AZ,CA,TX       | 22                                 | 276               | 530               | 21              | 440               | 790               |
| CO,KS,NE       | 51                                 | 725               | 1,550             | 31              | 735               | 1,650             |
| Oth Sts        | 8                                  | 113               | 251               | 8               | 133               | 308               |
| US             | 81                                 | 1,114             | 2,331             | 60              | 1,308             | 2,748             |
| 2002           |                                    |                   |                   |                 |                   |                   |
| AZ,CA,TX       | 22                                 | 280               | 577               | 20              | 350               | 774               |
| CO,KS,NE       | 53                                 | 706               | 1,595             | 29              | 571               | 1,395             |
| Oth Sts        | 9                                  | 134               | 265               | 8               | 131               | 299               |
| US             | 84                                 | 1,120             | 2,437             | 57              | 1,052             | 2,468             |

See footnote(s) at end of table.

--continued

**Cattle on Feed: Number of Feedlots, Inventory, and Marketings, by  
Size of Feedlot, Region, and United States 2001-2002 <sup>1</sup> (continued)**

| Year and State | Feedlot Capacity in Number of Head |                   |                   |                 |                   |                   |
|----------------|------------------------------------|-------------------|-------------------|-----------------|-------------------|-------------------|
|                | 32,000 - 49,999                    |                   |                   | 50,000 and Over |                   |                   |
|                | Lots                               | Inventory         | Cattle Marketed   | Lots            | Inventory         | Cattle Marketed   |
|                | <i>Number</i>                      | <i>1,000 Head</i> | <i>1,000 Head</i> | <i>Number</i>   | <i>1,000 Head</i> | <i>1,000 Head</i> |
| 2001           |                                    |                   |                   |                 |                   |                   |
| AZ,CA,TX       | 34                                 | 1,144             | 2,158             | 24              | 1,523             | 2,900             |
| CO,KS,NE       | 28                                 | 970               | 2,000             | 18              | 1,150             | 2,645             |
| Oth Sts        | 5                                  | 161               | 349               | 9               | 502               | 1,230             |
| US             | 67                                 | 2,275             | 4,507             | 51              | 3,175             | 6,775             |
| 2002           |                                    |                   |                   |                 |                   |                   |
| AZ,CA,TX       | 34                                 | 1,027             | 2,161             | 24              | 1,513             | 2,945             |
| CO,KS,NE       | 30                                 | 861               | 2,225             | 19              | 1,155             | 2,800             |
| Oth Sts        | 4                                  | 101               | 248               | 10              | 477               | 1,212             |
| US             | 68                                 | 1,989             | 4,634             | 53              | 3,145             | 6,957             |

<sup>1</sup> Number of feedlots is the number of lots operating at anytime during the year. Inventory is the number on hand January 1 of the following year.

**Cattle on Feed: Number of Feedlots, Inventory, and Marketings,  
Feedlots With Less Than 1,000 Head Capacity,  
by State, and United States 2001-2002 <sup>1</sup>**

| Year and State | Lots          | Inventory         | Cattle Marketed   |
|----------------|---------------|-------------------|-------------------|
|                | <i>Number</i> | <i>1,000 Head</i> | <i>1,000 Head</i> |
| 2001           |               |                   |                   |
| IL             | 5,600         | 150               | 240               |
| IN             | 5,800         | 107               | 180               |
| IA             | 11,000        | 600               | 790               |
| MI             | 3,900         | 144               | 180               |
| MN             | 7,000         | 188               | 310               |
| MO             | 3,100         | 53                | 80                |
| NE             | 4,380         | 140               | 300               |
| ND             | 1,400         | 47                | 70                |
| OH             | 7,200         | 171               | 280               |
| PA             | 4,900         | 68                | 100               |
| SD             | 3,200         | 160               | 230               |
| WI             | 6,900         | 152               | 240               |
| Oth Sts        | 27,620        | 315.3             | 500               |
| US             | 92,000        | 2,295.3           | 3,500             |
| 2002           |               |                   |                   |
| IL             | 5,500         | 148               | 250               |
| IN             | 5,900         | 110               | 180               |
| IA             | 11,000        | 625               | 880               |
| MI             | 4,000         | 144               | 170               |
| MN             | 7,000         | 186               | 300               |
| MO             | 3,100         | 58                | 90                |
| NE             | 4,260         | 120               | 300               |
| ND             | 1,400         | 44                | 80                |
| OH             | 6,700         | 171               | 290               |
| PA             | 4,900         | 68                | 100               |
| SD             | 3,100         | 160               | 250               |
| WI             | 6,900         | 141               | 260               |
| Oth Sts        | 29,240        | 347.8             | 600               |
| US             | 93,000        | 2,322.8           | 3,750             |

<sup>1</sup> Number of feedlots is the number of lots operating at the end of the year. Inventory is the number on hand January 1 of the following year.

**Cattle on Feed: Number of Feedlots, Inventory, and Marketings,  
by Size of Feedlot, United States 2001-2002 <sup>1</sup>**

| Feedlot Capacity     | 2001       |                   |                   | 2002       |                   |                   |
|----------------------|------------|-------------------|-------------------|------------|-------------------|-------------------|
|                      | Lots       | Inventory         | Cattle Marketed   | Lots       | Inventory         | Cattle Marketed   |
|                      | <i>No.</i> | <i>1,000 Head</i> | <i>1,000 Head</i> | <i>No.</i> | <i>1,000 Head</i> | <i>1,000 Head</i> |
| Less than 1,000 head | 92,000     | 2,295.3           | 3,500             | 93,000     | 2,322.8           | 3,750             |
| 1,000 head or more   | 2,110      | 11,565            | 23,401            | 2,189      | 10,593            | 23,639            |
| All Feedlots         | 94,110     | 13,860.3          | 26,901            | 95,189     | 12,915.8          | 27,389            |

<sup>1</sup> Number of feedlots with capacity less than 1,000 head is the number of lots operating at the end of the year. Number of feedlots with capacity 1,000 head or more is the number of lots operating at anytime during the year. Inventory is the number on hand January 1 of the following year.

## Terms and Definitions of Cattle on Feed Estimates

**Cattle on feed** are animals being fed a ration of grain, silage, hay and/or protein supplement for slaughter market that are expected to produce a carcass that will grade select or better. It excludes cattle being "backgrounded only" for later sale as feeders or later placement in another feedlot.

**Placements** are cattle put into a feedlot, fed a ration which will produce a carcass that will grade select or better, and are intended for the slaughter market.

**Marketings** are cattle shipped out of feedlots to a slaughter market.

**Other disappearance** includes death loss, movement from feedlots to pasture, and shipments to other feedlots for further feeding.

## Reliability of Cattle on Feed Estimates

**Survey Procedures:** During January and July all known feedlots in the U.S. with capacity of 1,000 or more head are surveyed to provide data for cattle on feed estimates. During the other months, all known feedlots from 17 States are surveyed. The 17 States account for 98 percent of the cattle on feed.

**Estimating Procedures:** These cattle on feed estimates were prepared by the Agricultural Statistics Board after reviewing recommendations and analysis submitted by each State office. Regional and State survey data were reviewed for reasonableness with each other and with estimates from the previous month when setting the current estimates.

**Revision Policy:** Revisions to previous estimates are made to improve month to month relationships. Estimates for the previous month are subject to revision in all States each month when current estimates are made. In February, all monthly estimates for the previous year, and the number of feedlots and annual marketings from two years ago are reviewed and subject to revisions. The reviews are primarily based on slaughter data, state check-off or brand data, and any other data that may have been received after the original estimate was made. Estimates will also be reviewed after data from the Census of Agriculture are available. No revisions will be made after that date and estimates become final.

**Reliability:** Since all 1000+ capacity cattle on feed operators in every State are not included in the monthly survey, survey estimates are subject to sampling variability. Survey results are also subject to non-sampling errors such as omissions, duplications, and mistakes in reporting, recording, and processing the data. The effects of these errors cannot be measured directly. They are minimized through rigid quality controls in the data collection process and through a careful review of all reported data for consistency and reasonableness.

## Index

## Page

|   |    |
|---|----|
| Cattle on Feed, 1,000+ Capacity Feedlots, State and U.S.,<br>January 1, 2003 and February 1, 2002-2003 .....                | 3  |
| Cattle on Feed, 1,000+ Capacity Feedlots, State and U.S., January 2002 - December 2002 .....                                | 6  |
| Cattle on Feed, 1,000+ Capacity Feedlots, United States Summary .....   | 2  |
| Cattle on Feed, Feedlot Capacity, 1,000+ Capacity Feedlots, United States,<br>January 1, 2001-2003 .....                    | 18 |
| Cattle on Feed, Number by Class, 1,000+ Capacity Feedlots, State and U.S.,<br>January 2002-October 2002 .....               | 14 |
| Marketings, 1,000+ Capacity Feedlots, State and U.S.,<br>December 2001 and January 2002-November 2002 .....                 | 12 |
| Marketings, 1,000+ Capacity Feedlots, State and U.S.,<br>December 2002 and January 2002-2003 .....                          | 5  |
| Number of Feedlots, Inventory, and Marketings by Size of Feedlot,<br>Region and U.S., 2001-2002 .....                       | 19 |
| Number of Feedlots, Inventory, and Marketings by Size of Feedlot,<br>State and U.S., 2001-2002 .....                        | 15 |
| Number of Feedlots, Inventory, and Marketings by Size of Feedlot, U.S., 2001-2002 .....                                     | 21 |
| Number of Feedlots with less than 1000 Head Capacity, Inventory, and Marketings,<br>State and U.S., 2001-2002 .....         | 21 |
| Other Disappearance, 1,000+ Capacity Feedlots, State and U.S.,<br>December 2001 and January 2002-November 2002 .....        | 13 |
| Other Disappearance, 1,000+ Capacity Feedlots, State and U.S.,<br>December 2002 and January 2002-2003 .....                 | 5  |
| Placements, 1000+ Capacity Feedlots, State and U.S.,<br>December 2001 and January 2002-November 2002 .....                  | 7  |
| Placements, 1000+ Capacity Feedlots, State and U.S., December 2002 and January 2002-2003 .....                              | 4  |
| Placements by Weight Group, 1,000+ Capacity Feedlots, State and U.S.,<br>December 2001 and January 2002-November 2002 ..... | 8  |
| Placements by Weight Group, 1,000+ Capacity Feedlots, State and U.S.,<br>December 2001-2002 and January 2002-2003 .....     | 4  |
| Reliability of Cattle on Feed Estimates .....   | 22 |
| Terms and Definitions of Cattle on Feed Estimates .....   | 22 |

The next "Cattle on Feed" report will be released at 3 p.m. ET on March 21, 2003.

The United States Department of Agriculture (USDA) prohibits discrimination in all its programs on the basis of race, color, national origin, gender, religion, age, disability, political beliefs, sexual orientation, and marital or family status. (Not all prohibited bases apply to all programs.) Persons with disabilities who require alternative means for communication of program information (braille, large print, audiotape, etc.) should contact the USDA's TARGET Center at 202-720-2600 (voice and TDD).

To file a complaint of discrimination, write USDA, Director, Office of Civil Rights, Room 326-W, Whitten Building, 1400 Independence Avenue, SW, Washington, D.C., 20250-9410, or call 202-720-5964 (voice or TDD). USDA is an equal opportunity provider and employer.

## **ACCESS TO REPORTS!!**

---

For your convenience, there are several ways to obtain NASS reports, data products, and services:

### **INTERNET ACCESS**

All NASS reports are available free of charge on the worldwide Internet. For access, connect to the Internet and go to the NASS Home Page at: <http://www.usda.gov/nass/>. Select "Today's Reports" or Publications and then Reports Calendar or Publications and then Search, by Title or Subject.

### **E-MAIL SUBSCRIPTION**

All NASS reports are available by subscription free of charge direct to your e-mail address. Starting with the NASS Home Page at <http://www.usda.gov/nass/>, click on **Publications**, then click on the **Subscribe by E-mail** button which takes you to the page describing e-mail delivery of reports. Finally, click on **Go to the Subscription Page** and follow the instructions.

### **AUTOFAX ACCESS**

NASSFax service is available for some reports from your fax machine. Please call 202-720-2000, using the handset attached to your fax. Respond to the voice prompts. Document 0411 is a list of available reports.

-----  
**PRINTED REPORTS OR DATA PRODUCTS**

**CALL OUR TOLL-FREE ORDER DESK: 800-999-6779 (U.S. and Canada)**  
**Other areas, please call 703-605-6220      FAX: 703-605-6900**  
**(Visa, MasterCard, check, or money order acceptable for payment.)**  
-----

### **ASSISTANCE**

For **assistance** with general agricultural statistics or further information about NASS or its products or services, contact the **Agricultural Statistics Hotline** at **800-727-9540**, 7:30 a.m. to 4:00 p.m. ET, or e-mail: [nass@nass.usda.gov](mailto:nass@nass.usda.gov).

---



# Competing in the 21st Century

---

## Agricultural Outlook Forum 2003



**February 20-21, 2003**

**Crystal Gateway**

**Marriott Hotel**

**Arlington, Virginia**

**2003 Commodity Prospects  
Emerging Export Competitors  
Farming under New Programs  
Coping with Regulations  
Shifting consumer Preferences  
Ensuring Food Safety  
Impact of El Nino**

Sharpen your strategic focus at USDA's 79th annual Agricultural Outlook Forum. Note experts, industry leaders and producers will discuss many facets of competing in domestic and world markets.

The program will examine growing competition from Central and Eastern Europe, Brazil and Asia, as well as progress in WTO negotiations.

Focus sessions will highlight many challenges producers face in the competitive arena, ranging from the growing complexity and cost of regulation, to dealing with food safety and changing eating habits.

As always, leading analysts will be on hand to debate planting, trade and price prospects for farm commodities for the year ahead. Attendees will receive new 10-year commodity projections from USDA.

Networking opportunities abound at the Forum, which attracted 1,400 attendees last February. Register now for the best value. See full details at [www.usda.gov/oce](http://www.usda.gov/oce).

**[www.usda.gov/oce](http://www.usda.gov/oce)   [agforum@oce.usda.gov](mailto:agforum@oce.usda.gov)   (877) 891-2208 toll free**