



Cattle on Feed

Released March 21, 2003, by the National Agricultural Statistics Service (NASS), Agricultural Statistics Board, U.S. Department of Agriculture. For information on "Cattle on Feed" call Steve Anderson at (202) 720-3040, office hours 7:30 a.m. to 4:00 p.m. ET.

U.S. Cattle on Feed Down 9 Percent

Cattle and calves on feed for slaughter market in the United States for feedlots with capacity of 1,000 or more head totaled 10.52 million head on March 1, 2003. The inventory was down 9 percent from the 11.52 million head on March 1, 2002 and 10 percent below March 1, 2001.

Placements in feedlots during February totaled 1.66 million, 8 percent below 2002 but 5 percent above 2001. Net placements were 1.59 million. During February, placements of cattle and calves weighing less than 600 pounds were 263,000, 600-699 pounds were 376,000, 700-799 pounds were 597,000, and 800 pounds and greater were 421,000.

Marketings of fed cattle during February totaled 1.73 million, 4 percent below 2002 and 1 percent below 2001.

Other disappearance totaled 71,000 during February, 13 percent above 2002 but 12 percent below 2001.

**Cattle on Feed: Number on Feed, Placements, Marketings, and
Other Disappearance, 1,000+ Capacity Feedlots,
United States, March 1, 2001-2003**

Item	Number			2003 as % of	
	2001	2002	2003	2001	2002
	<i>1,000 Head</i>	<i>1,000 Head</i>	<i>1,000 Head</i>	<i>Percent</i>	<i>Percent</i>
On Feed Feb 1 ¹	11,941	11,572	*10,660	89	92
Placed on Feed During Feb	1,580	1,810	1,657	105	92
Fed Cattle Marketed During Feb	1,745	1,801	1,725	99	96
Other Disappearance During Feb ²	81	63	71	88	113
On Feed Mar 1 ¹	11,695	11,518	10,521	90	91

* Revised.

¹ Cattle and calves on feed are animals for slaughter market being fed a ration of grain or other concentrates and are expected to produce a carcass that will grade select or better.

² Includes death loss, movement from feedlots to pasture, and shipments to other feedlots for further feeding.

**Cattle on Feed: Number on Feed, Placements, Marketings, and
Other Disappearance, 1,000+ Capacity Feedlots,
United States, February 1, 2001-2003**

Item	Number			2003 as % of	
	2001	2002	2003	2001	2002
	<i>1,000 Head</i>	<i>1,000 Head</i>	<i>1,000 Head</i>	<i>Percent</i>	<i>Percent</i>
On Feed Jan 1 ¹	11,798	11,565	10,593	90	92
Placed on Feed During Jan	2,263	2,179	*2,101	93	96
Fed Cattle Marketed During Jan	2,042	2,083	*1,959	96	94
Other Disappearance During Jan ²	78	89	75	96	84
On Feed Feb 1 ¹	11,941	11,572	*10,660	89	92

* Revised.

¹ Cattle and calves on feed are animals for slaughter market being fed a ration of grain or other concentrates and are expected to produce a carcass that will grade select or better.

² Includes death loss, movement from feedlots to pasture, and shipments to other feedlots for further feeding.

**Cattle on Feed: Number on Feed, 1,000+ Capacity Feedlots,
by Month, State, and United States 2002-2003 ¹**

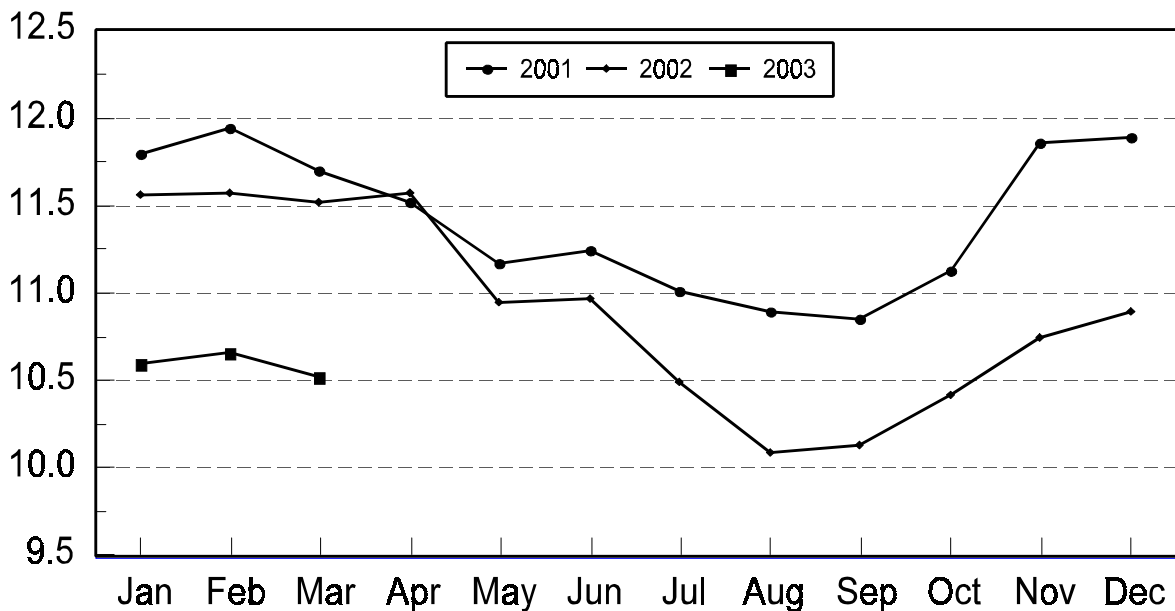
State	Mar 1, 2002	Feb 1, 2003	Mar 1, 2003		
			Number	as % of 2002	as % of Feb
	<i>1,000 Head</i>	<i>1,000 Head</i>	<i>1,000 Head</i>	<i>Percent</i>	<i>Percent</i>
AZ	310	291	279	90	96
CA	475	475	470	99	99
CO	1,150	1,030	990	86	96
ID	315	285	280	89	98
IA	400	360	360	90	100
KS	2,420	2,220	2,240	93	101
NE	2,300	2,220	2,190	95	99
NM	109	*114	112	103	98
OK	345	*330	320	93	97
SD	210	215	215	102	100
TX	2,850	*2,600	2,560	90	98
WA	229	180	180	79	100
Oth Sts	405	340	325	80	96
US	11,518	*10,660	10,521	91	99

* Revised.

¹ Cattle and calves on feed are animals for slaughter market being fed a ration of grain or other concentrates and are expected to produce a carcass that will grade select or better.

United States Cattle on Feed 1,000+ Capacity Feedlots

Million Head



**Cattle on Feed: Number Placed on Feed, 1,000+ Capacity Feedlots,
by Month, State, and United States 2002-2003**

State	During Feb 2002	During Jan 2003	During Feb 2003		
			Number	as % of 2002	as % of Jan
	<i>1,000 Head</i>	<i>1,000 Head</i>	<i>1,000 Head</i>	<i>Percent</i>	<i>Percent</i>
AZ	26	29	22	85	76
CA	55	58	54	98	93
CO	190	*225	170	89	76
ID	58	56	50	86	89
IA	57	69	58	102	84
KS	435	540	410	94	76
NE	370	480	330	89	69
NM	12	*9	11	92	122
OK	55	*51	46	84	90
SD	45	53	40	89	75
TX	410	*420	370	90	88
WA	43	36	31	72	86
Oth Sts	54	75	65	120	87
US	1,810	*2,101	1,657	92	79

* Revised.

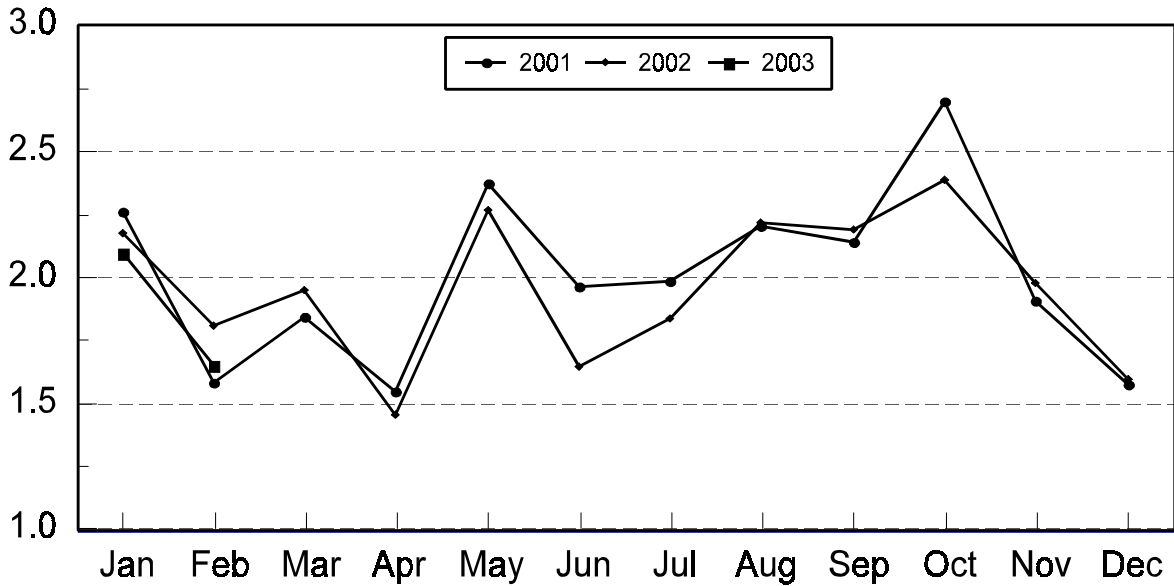
**Cattle on Feed: Number Placed on Feed by Weight Group, 1,000+ Capacity
Feedlots, by Month, State, and United States, 2002-2003**

State	During February									
	Under 600		600-699		700-799		800 Plus		Total	
	2002	2003	2002	2003	2002	2003	2002	2003	2002	2003
	<i>1,000 Head</i>	<i>1,000 Head</i>	<i>1,000 Head</i>	<i>1,000 Head</i>	<i>1,000 Head</i>	<i>1,000 Head</i>	<i>1,000 Head</i>	<i>1,000 Head</i>	<i>1,000 Head</i>	<i>1,000 Head</i>
CO	21	18	55	40	72	71	42	41	190	170
KS	40	35	105	105	170	165	120	105	435	410
NE	30	40	86	69	137	124	117	97	370	330
TX	80	70	95	100	165	137	70	63	410	370
Oth Sts	90	100	70	62	120	100	125	115	405	377
US	261	263	411	376	664	597	474	421	1,810	1,657
	During January									
	Under 600		600-699		700-799		800 Plus		Total	
	2002	2003	2002	2003	2002	2003	2002	2003	2002	2003
	<i>1,000 Head</i>	<i>1,000 Head</i>	<i>1,000 Head</i>	<i>1,000 Head</i>	<i>1,000 Head</i>	<i>1,000 Head</i>	<i>1,000 Head</i>	<i>1,000 Head</i>	<i>1,000 Head</i>	<i>1,000 Head</i>
CO	30	43	74	*49	84	*95	37	*38	225	*225
KS	55	65	170	185	205	200	100	90	530	540
NE	61	70	139	135	170	161	120	114	490	480
TX	105	*126	140	*122	165	*126	70	*46	480	*420
Oth Sts	130	*125	95	*86	114	110	115	115	454	*436
US	381	*429	618	*577	738	*692	442	*403	2,179	*2,101

* Revised.

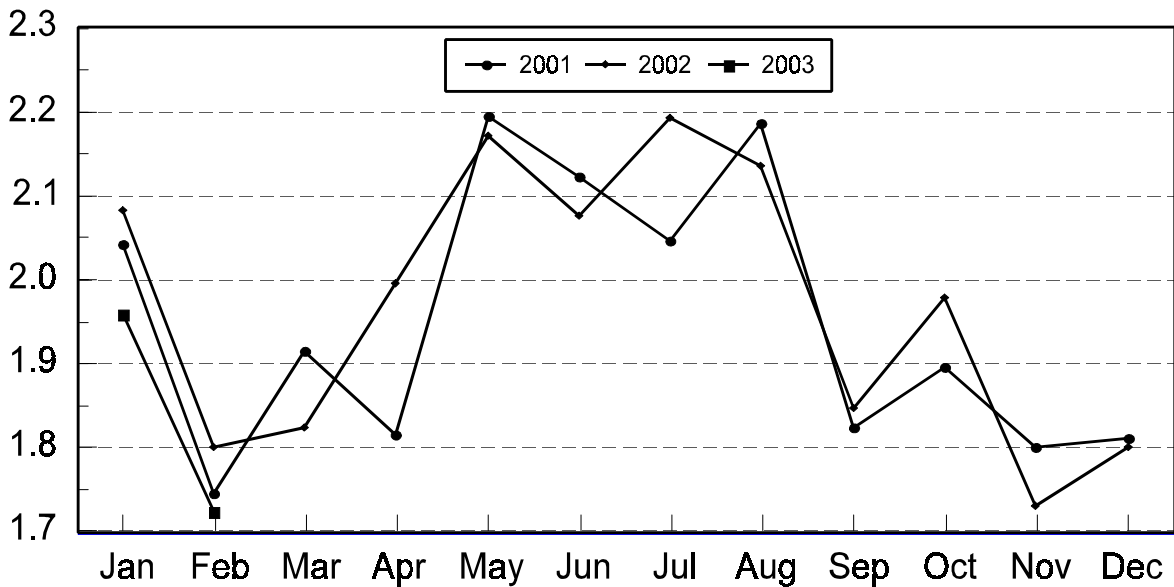
United States Cattle on Feed 1,000+ Capacity Feedlots Number Placed

Million Head



United States Cattle on Feed 1,000+ Capacity Feedlots Number Marketed

Million Head



**Cattle on Feed: Number Marketed, 1,000+ Capacity Feedlots,
by Month, State, and United States 2002-2003**

State	During Feb 2002	During Jan 2003	During Feb 2003		
			Number	as % of 2002	as % of Jan
	<i>1,000 Head</i>	<i>1,000 Head</i>	<i>1,000 Head</i>	<i>Percent</i>	<i>Percent</i>
AZ	26	24	31	119	129
CA	50	67	56	112	84
CO	210	*205	200	95	98
ID	61	65	54	89	83
IA	51	62	56	110	90
KS	450	500	370	82	74
NE	350	390	350	100	90
NM	11	*13	12	109	92
OK	59	49	55	93	112
SD	34	42	39	115	93
TX	400	435	395	99	91
WA	50	39	30	60	77
Oth Sts	49	68	77	157	113
US	1,801	*1,959	1,725	96	88

* Revised.

**Cattle on Feed: Other Disappearance, 1,000+ Capacity Feedlots,
by Month, State, and United States 2002-2003 ¹**

State	During Feb 2002	During Jan 2003	During Feb 2003		
			Number	as % of 2002	as % of Jan
	<i>1,000 Head</i>	<i>1,000 Head</i>	<i>1,000 Head</i>	<i>Percent</i>	<i>Percent</i>
AZ	1	3	3	300	100
CA	5	6	3	60	50
CO	10	10	10	100	100
ID	2	1	1	50	100
IA	1	2	2	200	100
KS	15	20	20	133	100
NE	10	10	10	100	100
NM	1	1	1	100	100
OK	1	2	1	100	50
SD	1	1	1	100	100
TX	10	15	15	150	100
WA	1	2	1	100	50
Oth Sts	5	2	3	60	150
US	63	75	71	113	95

¹ Includes death loss, movement from feedlots to pasture, and shipments to other feedlots for further feeding.

Terms and Definitions of Cattle on Feed Estimates

Cattle on feed are animals being fed a ration of grain, silage, hay and/or protein supplement for slaughter market that are expected to produce a carcass that will grade select or better. It excludes cattle being "backgrounded only" for later sale as feeders or later placement in another feedlot.

Placements are cattle put into a feedlot, fed a ration which will produce a carcass that will grade select or better, and are intended for the slaughter market.

Marketings are cattle shipped out of feedlots to a slaughter market.

Other disappearance includes death loss, movement from feedlots to pasture, and shipments to other feedlots for further feeding.

Reliability of Cattle on Feed Estimates

Survey Procedures: During January and July all known feedlots in the U.S. with capacity of 1,000 or more head are surveyed to provide data for cattle on feed estimates. During the other months, all known feedlots from 17 States are surveyed. The 17 States account for 98 percent of the cattle on feed.

Estimating Procedures: These cattle on feed estimates were prepared by the Agricultural Statistics Board after reviewing recommendations and analysis submitted by each State office. Regional and State survey data were reviewed for reasonableness with each other and with estimates from the previous month when setting the current estimates.

Revision Policy: Revisions to previous estimates are made to improve month to month relationships. Estimates for the previous month are subject to revision in all States each month when current estimates are made. In February, all monthly estimates for the previous year, and the number of feedlots and annual marketings from two years ago are reviewed and subject to revisions. The reviews are primarily based on slaughter data, state check-off or brand data, and any other data that may have been received after the original estimate was made. Estimates will also be reviewed after data from the Census of Agriculture are available. No revisions will be made after that date and estimates become final.

Reliability: Since all 1000+ capacity cattle on feed operators in every State are not included in the monthly survey, survey estimates are subject to sampling variability. Survey results are also subject to non-sampling errors such as omissions, duplications, and mistakes in reporting, recording, and processing the data. The effects of these errors cannot be measured directly. They are minimized through rigid quality controls in the data collection process and through a careful review of all reported data for consistency and reasonableness.

The next "Cattle on Feed" report will be released at 3 p.m. ET on April 17, 2003.

The United States Department of Agriculture (USDA) prohibits discrimination in all its programs on the basis of race, color, national origin, gender, religion, age, disability, political beliefs, sexual orientation, and marital or family status. (Not all prohibited bases apply to all programs.) Persons with disabilities who require alternative means for communication of program information (braille, large print, audiotape, etc.) should contact the USDA's TARGET Center at 202-720-2600 (voice and TDD).

To file a complaint of discrimination, write USDA, Director, Office of Civil Rights, Room 326-W, Whitten Building, 1400 Independence Avenue, SW, Washington, D.C., 20250-9410, or call 202-720-5964 (voice or TDD). USDA is an equal opportunity provider and employer.

ACCESS TO REPORTS!!

For your convenience, there are several ways to obtain NASS reports, data products, and services:

INTERNET ACCESS

All NASS reports are available free of charge on the worldwide Internet. For access, connect to the Internet and go to the NASS Home Page at: <http://www.usda.gov/nass/>. Select "Today's Reports" or Publications and then Reports Calendar or Publications and then Search, by Title or Subject.

E-MAIL SUBSCRIPTION

All NASS reports are available by subscription free of charge direct to your e-mail address. Starting with the NASS Home Page at <http://www.usda.gov/nass/>, click on **Publications**, then click on the **Subscribe by E-mail** button which takes you to the page describing e-mail delivery of reports. Finally, click on **Go to the Subscription Page** and follow the instructions.

AUTOFAX ACCESS

NASSFax service is available for some reports from your fax machine. Please call 202-720-2000, using the handset attached to your fax. Respond to the voice prompts. Document 0411 is a list of available reports.

PRINTED REPORTS OR DATA PRODUCTS

CALL OUR TOLL-FREE ORDER DESK: 800-999-6779 (U.S. and Canada)
Other areas, please call 703-605-6220 FAX: 703-605-6900
(Visa, MasterCard, check, or money order acceptable for payment.)

ASSISTANCE

For **assistance** with general agricultural statistics or further information about NASS or its products or services, contact the **Agricultural Statistics Hotline** at **800-727-9540**, 7:30 a.m. to 4:00 p.m. ET, or e-mail: nass@nass.usda.gov.
