



Cattle on Feed

Released April 17, 2003, by the National Agricultural Statistics Service (NASS), Agricultural Statistics Board, U.S. Department of Agriculture. For information on "Cattle on Feed" call Steve Anderson at (202) 720-3040, office hours 7:30 a.m. to 4:00 p.m. ET.

U.S. Cattle on Feed Down 8 Percent

Cattle and calves on feed for slaughter market in the United States for feedlots with capacity of 1,000 or more head totaled 10.70 million head on April 1, 2003. The inventory was 8 percent below April 1, 2002 and 7 percent below April 1, 2001. The inventory included 6.72 million steers and steer calves, down 7 percent from the previous year. This group accounted for 63 percent of the total inventory. Heifers and heifer calves accounted for 3.92 million head, down 9 percent from 2002.

Placements in feedlots during March totaled 2.04 million, 5 percent above 2002 and 11 percent above 2001. Net placements were 1.98 million. During March, placements of cattle and calves weighing less than 600 pounds were 276,000, 600-699 pounds were 390,000, 700-799 pounds were 744,000, and 800 pounds and greater were 632,000.

Marketings of fed cattle during March totaled 1.80 million, 1 percent below 2002 and 6 percent below 2001.

Other disappearance totaled 62,000 during March, 10 percent below 2002 and 37 percent below 2001.

**Cattle on Feed: Number on Feed, Placements, Marketings, and
Other Disappearance, 1,000+ Capacity Feedlots,
United States, April 1, 2001-2003**

Item	Number			2003 as % of	
	2001	2002	2003	2001	2002
	<i>1,000 Head</i>	<i>1,000 Head</i>	<i>1,000 Head</i>	<i>Percent</i>	<i>Percent</i>
On Feed Mar 1 ¹	11,695	11,518	*10,526	90	91
Placed on Feed During Mar	1,842	1,953	2,042	111	105
Fed Cattle Marketed During Mar	1,916	1,825	1,803	94	99
Other Disappearance During Mar ²	98	69	62	63	90
On Feed Apr 1 ¹	11,523	11,577	10,703	93	92

* Revised.

¹ Cattle and calves on feed are animals for slaughter market being fed a ration of grain or other concentrates and are expected to produce a carcass that will grade select or better.

² Includes death loss, movement from feedlots to pasture, and shipments to other feedlots for further feeding.

**Cattle on Feed: Number on Feed, Placements, Marketings, and
Other Disappearance, 1,000+ Capacity Feedlots,
United States, March 1, 2001-2003**

Item	Number			2003 as % of	
	2001	2002	2003	2001	2002
	<i>1,000 Head</i>	<i>1,000 Head</i>	<i>1,000 Head</i>	<i>Percent</i>	<i>Percent</i>
On Feed Feb 1 ¹	11,941	11,572	10,660	89	92
Placed on Feed During Feb	1,580	1,810	*1,652	105	91
Fed Cattle Marketed During Feb	1,745	1,801	*1,715	98	95
Other Disappearance During Feb ²	81	63	71	88	113
On Feed Mar 1 ¹	11,695	11,518	*10,526	90	91

* Revised.

¹ Cattle and calves on feed are animals for slaughter market being fed a ration of grain or other concentrates and are expected to produce a carcass that will grade select or better.

² Includes death loss, movement from feedlots to pasture, and shipments to other feedlots for further feeding.

**Cattle on Feed: Number on Feed by Class, 1,000+ Capacity Feedlots,
United States, April 1, 2001-2003**

Item	Number			2003 as % of	
	2001	2002	2003	2001	2002
	<i>1,000 Head</i>	<i>1,000 Head</i>	<i>1,000 Head</i>	<i>Percent</i>	<i>Percent</i>
Class on Feed Apr 1					
Steers and Steer Calves	6,957	7,232	6,715	97	93
Heifers and Heifer Calves	4,486	4,302	3,918	87	91
Cows and Bulls	80	43	70	88	163

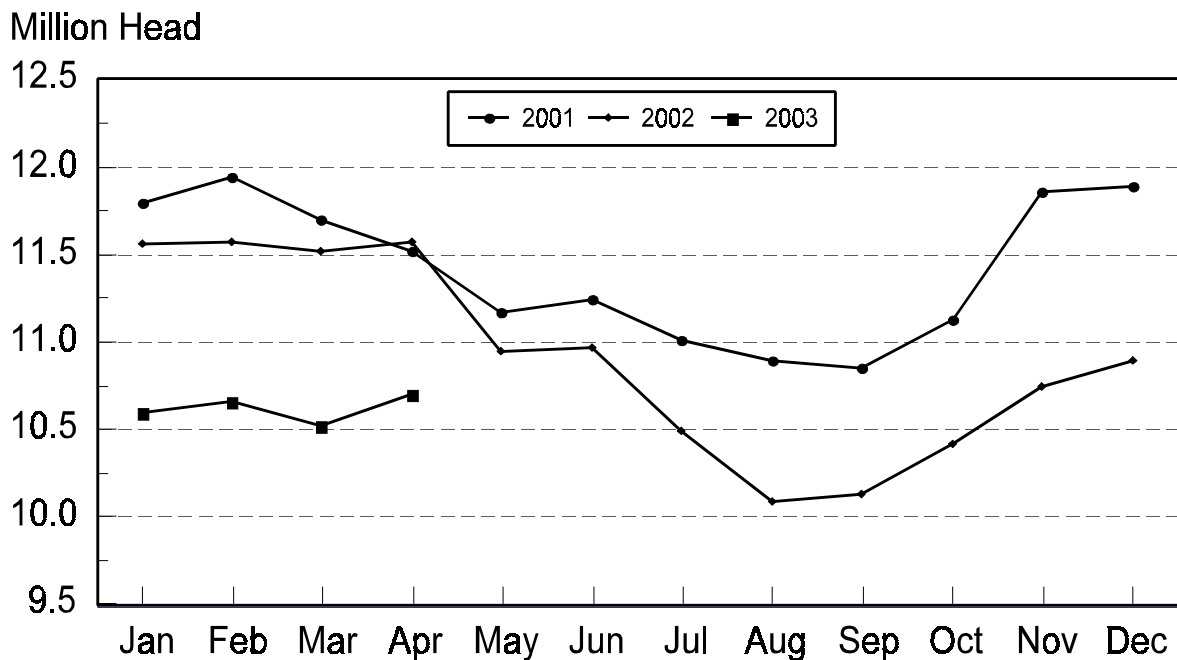
**Cattle on Feed: Number on Feed, 1,000+ Capacity Feedlots,
by Month, State, and United States 2002-2003 ¹**

State	Apr 1, 2002	Mar 1, 2003	Apr 1, 2003		
			Number	as % of 2002	as % of Mar
	<i>1,000 Head</i>	<i>1,000 Head</i>	<i>1,000 Head</i>	<i>Percent</i>	<i>Percent</i>
AZ	314	279	278	89	100
CA	485	470	470	97	100
CO	1,120	990	970	87	98
ID	325	280	280	86	100
IA	395	*365	365	92	100
KS	2,420	2,240	2,320	96	104
NE	2,300	2,190	2,190	95	100
NM	113	112	105	93	94
OK	360	320	340	94	106
SD	220	215	215	98	100
TX	2,900	2,560	2,670	92	104
WA	230	180	180	78	100
Oth Sts	395	325	320	81	98
US	11,577	*10,526	10,703	92	102

* Revised.

¹ Cattle and calves on feed are animals for slaughter market being fed a ration of grain or other concentrates and are expected to produce a carcass that will grade select or better.

United States Cattle on Feed 1,000+ Capacity Feedlots



**Cattle on Feed: Number Placed on Feed, 1,000+ Capacity Feedlots,
by Month, State, and United States 2002-2003**

State	During Mar 2002	During Feb 2003	During Mar 2003		
			Number	as % of 2002	as % of Feb
	<i>1,000 Head</i>	<i>1,000 Head</i>	<i>1,000 Head</i>	<i>Percent</i>	<i>Percent</i>
AZ	32	22	31	97	141
CA	68	54	62	91	115
CO	200	*160	165	83	103
ID	70	50	58	83	116
IA	49	*63	56	114	89
KS	435	410	510	117	124
NE	310	330	320	103	97
NM	19	11	16	84	145
OK	80	46	94	118	204
SD	44	40	44	100	110
TX	560	370	600	107	162
WA	40	31	31	78	100
Oth Sts	46	65	55	120	85
US	1,953	*1,652	2,042	105	124

* Revised.

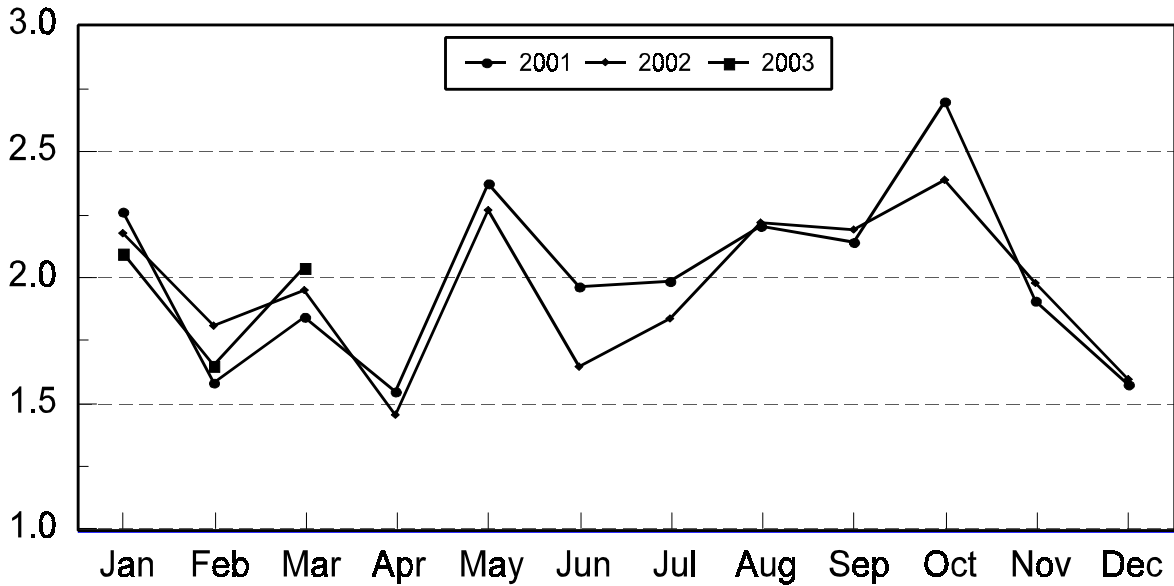
**Cattle on Feed: Number Placed on Feed by Weight Group, 1,000+ Capacity
Feedlots, by Month, State, and United States, 2002-2003**

State	During March									
	Under 600		600-699		700-799		800 Plus		Total	
	2002	2003	2002	2003	2002	2003	2002	2003	2002	2003
	<i>1,000 Head</i>	<i>1,000 Head</i>	<i>1,000 Head</i>	<i>1,000 Head</i>	<i>1,000 Head</i>	<i>1,000 Head</i>	<i>1,000 Head</i>	<i>1,000 Head</i>	<i>1,000 Head</i>	<i>1,000 Head</i>
CO	21	16	41	27	72	63	66	59	200	165
KS	45	45	75	105	180	200	135	160	435	510
NE	33	22	63	55	100	113	114	130	310	320
TX	105	78	120	128	225	248	110	146	560	600
Oth Sts	110	115	73	75	125	120	140	137	448	447
US	314	276	372	390	702	744	565	632	1,953	2,042
State	During February									
	Under 600		600-699		700-799		800 Plus		Total	
	2002	2003	2002	2003	2002	2003	2002	2003	2002	2003
	<i>1,000 Head</i>	<i>1,000 Head</i>	<i>1,000 Head</i>	<i>1,000 Head</i>	<i>1,000 Head</i>	<i>1,000 Head</i>	<i>1,000 Head</i>	<i>1,000 Head</i>	<i>1,000 Head</i>	<i>1,000 Head</i>
CO	21	*15	55	*37	72	*67	42	41	190	*160
KS	40	35	105	105	170	165	120	105	435	410
NE	30	40	86	69	137	124	117	97	370	330
TX	80	70	95	100	165	137	70	63	410	370
Oth Sts	90	100	70	62	120	100	125	*120	405	*382
US	261	*260	411	*373	664	*593	474	*426	1,810	*1,652

* Revised.

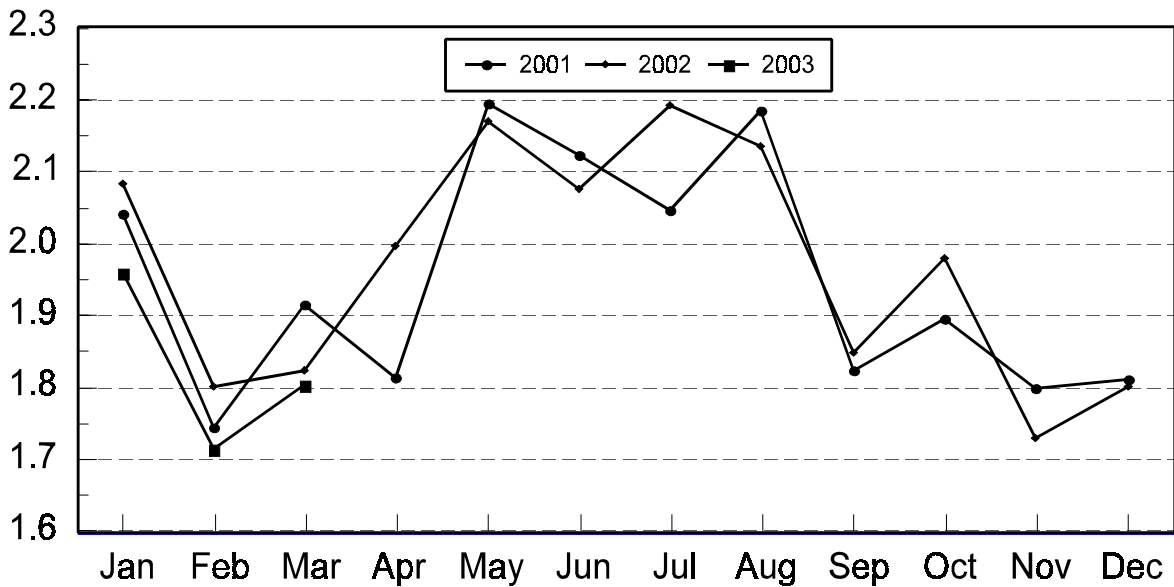
United States Cattle on Feed 1,000+ Capacity Feedlots Number Placed

Million Head



United States Cattle on Feed 1,000+ Capacity Feedlots Number Marketed

Million Head



**Cattle on Feed: Number Marketed, 1,000+ Capacity Feedlots,
by Month, State, and United States 2002-2003**

State	During Mar 2002	During Feb 2003	During Mar 2003		
			Number	as % of 2002	as % of Feb
	<i>1,000 Head</i>	<i>1,000 Head</i>	<i>1,000 Head</i>	<i>Percent</i>	<i>Percent</i>
AZ	27	31	29	107	94
CA	55	56	58	105	104
CO	215	*190	180	84	95
ID	59	54	57	97	106
IA	53	56	55	104	98
KS	420	370	410	98	111
NE	300	350	310	103	89
NM	14	12	22	157	183
OK	64	55	71	111	129
SD	33	39	43	130	110
TX	495	395	480	97	122
WA	37	30	30	81	100
Oth Sts	53	77	58	109	75
US	1,825	*1,715	1,803	99	105

* Revised.

**Cattle on Feed: Other Disappearance, 1,000+ Capacity Feedlots,
by Month, State, and United States 2002-2003 ¹**

State	During Mar 2002	During Feb 2003	During Mar 2003		
			Number	as % of 2002	as % of Feb
	<i>1,000 Head</i>	<i>1,000 Head</i>	<i>1,000 Head</i>	<i>Percent</i>	<i>Percent</i>
AZ	1	3	3	300	100
CA	3	3	4	133	133
CO	15	10	5	33	50
ID	1	1	1	100	100
IA	1	2	1	100	50
KS	15	20	20	133	100
NE	10	10	10	100	100
NM	1	1	1	100	100
OK	1	1	3	300	300
SD	1	1	1	100	100
TX	15	15	10	67	67
WA	2	1	1	50	100
Oth Sts	3	3	2	67	67
US	69	71	62	90	87

¹ Includes death loss, movement from feedlots to pasture, and shipments to other feedlots for further feeding.

**Cattle on Feed: Number on Feed by Class, 1,000+ Capacity Feedlots,
by Quarter, State, and United States, 2002-2003**

State	Steers & Steer Calves			Heifers & Heifer Calves			Cows and Bulls		
	Apr 1, 2002	Jan 1, 2003	Apr 1, 2003	Apr 1, 2002	Jan 1, 2003	Apr 1, 2003	Apr 1, 2002	Jan 1, 2003	Apr 1, 2003
	<i>1,000 Head</i>	<i>1,000 Head</i>	<i>1,000 Head</i>	<i>1,000 Head</i>	<i>1,000 Head</i>	<i>1,000 Head</i>	<i>1,000 Head</i>	<i>1,000 Head</i>	<i>1,000 Head</i>
AZ	311	281	274	3	8	4	0	0	0
CA	445	450	440	40	40	30	0	0	0
CO	645	585	590	470	425	375	5	10	5
ID	215	196	179	110	97	100	0	2	1
IA	260	240	235	134	114	129	1	1	1
KS	1,405	1,180	1,270	1,010	1,010	1,030	5	10	20
NE	1,340	1,240	1,305	940	870	860	20	30	25
NM	53	56	52	60	63	53	0	0	0
OK	215	215	220	142	114	118	3	1	2
SD	118	104	110	100	83	97	2	18	8
TX	1,775	1,630	1,710	1,120	999	955	5	1	5
WA	150	*110	100	80	75	80	0	0	0
Oth Sts	300	250	230	93	80	87	2	5	3
US	7,232	*6,537	6,715	4,302	3,978	3,918	43	78	70

* Revised.

Terms and Definitions of Cattle on Feed Estimates

Cattle on feed are animals being fed a ration of grain, silage, hay and/or protein supplement for slaughter market that are expected to produce a carcass that will grade select or better. It excludes cattle being "backgrounded only" for later sale as feeders or later placement in another feedlot.

Placements are cattle put into a feedlot, fed a ration which will produce a carcass that will grade select or better, and are intended for the slaughter market.

Marketings are cattle shipped out of feedlots to a slaughter market.

Other disappearance includes death loss, movement from feedlots to pasture, and shipments to other feedlots for further feeding.

Reliability of Cattle on Feed Estimates

Survey Procedures: During January and July all known feedlots in the U.S. with capacity of 1,000 or more head are surveyed to provide data for cattle on feed estimates. During the other months, all known feedlots from 17 States are surveyed. The 17 States account for 98 percent of the cattle on feed.

Estimating Procedures: These cattle on feed estimates were prepared by the Agricultural Statistics Board after reviewing recommendations and analysis submitted by each State office. Regional and State survey data were reviewed for reasonableness with each other and with estimates from the previous month when setting the current estimates.

Revision Policy: Revisions to previous estimates are made to improve month to month relationships. Estimates for the previous month are subject to revision in all States each month when current estimates are made. In February, all monthly estimates for the previous year, and the number of feedlots and annual marketings from two years ago are reviewed and subject to revisions. The reviews are primarily based on slaughter data, state check-off or brand data, and any other data that may have been received after the original estimate was made. Estimates will also be reviewed after data from the Census of Agriculture are available. No revisions will be made after that date and estimates become final.

Reliability: Since all 1000+ capacity cattle on feed operators in every State are not included in the monthly survey, survey estimates are subject to sampling variability. Survey results are also subject to non-sampling errors such as omissions, duplications, and mistakes in reporting, recording, and processing the data. The effects of these errors cannot be measured directly. They are minimized through rigid quality controls in the data collection process and through a careful review of all reported data for consistency and reasonableness.

The next "Cattle on Feed" report will be released at 3 p.m. ET on May 16, 2003.

The United States Department of Agriculture (USDA) prohibits discrimination in all its programs on the basis of race, color, national origin, gender, religion, age, disability, political beliefs, sexual orientation, and marital or family status. (Not all prohibited bases apply to all programs.) Persons with disabilities who require alternative means for communication of program information (braille, large print, audiotape, etc.) should contact the USDA's TARGET Center at 202-720-2600 (voice and TDD).

To file a complaint of discrimination, write USDA, Director, Office of Civil Rights, Room 326-W, Whitten Building, 1400 Independence Avenue, SW, Washington, D.C., 20250-9410, or call 202-720-5964 (voice or TDD). USDA is an equal opportunity provider and employer.

ACCESS TO REPORTS!!

For your convenience, there are several ways to obtain NASS reports, data products, and services:

INTERNET ACCESS

All NASS reports are available free of charge on the worldwide Internet. For access, connect to the Internet and go to the NASS Home Page at: <http://www.usda.gov/nass/>. Select "Today's Reports" or Publications and then Reports Calendar or Publications and then Search, by Title or Subject.

E-MAIL SUBSCRIPTION

All NASS reports are available by subscription free of charge direct to your e-mail address. Starting with the NASS Home Page at <http://www.usda.gov/nass/>, click on **Publications**, then click on the **Subscribe by E-mail** button which takes you to the page describing e-mail delivery of reports. Finally, click on **Go to the Subscription Page** and follow the instructions.

AUTOFAX ACCESS

NASSFax service is available for some reports from your fax machine. Please call 202-720-2000, using the handset attached to your fax. Respond to the voice prompts. Document 0411 is a list of available reports.

PRINTED REPORTS OR DATA PRODUCTS

CALL OUR TOLL-FREE ORDER DESK: 800-999-6779 (U.S. and Canada)
Other areas, please call 703-605-6220 FAX: 703-605-6900
(Visa, MasterCard, check, or money order acceptable for payment.)

ASSISTANCE

For **assistance** with general agricultural statistics or further information about NASS or its products or services, contact the **Agricultural Statistics Hotline** at **800-727-9540**, 7:30 a.m. to 4:00 p.m. ET, or e-mail: nass@nass.usda.gov.
