



Cattle on Feed

Released May 16, 2003, by the National Agricultural Statistics Service (NASS), Agricultural Statistics Board, U.S. Department of Agriculture. For information on "Cattle on Feed" call Steve Anderson at (202) 720-3040, office hours 7:30 a.m. to 4:00 p.m. ET.

U.S. Cattle on Feed Down 4 Percent

Cattle and calves on feed for slaughter market in the United States for feedlots with capacity of 1,000 or more head totaled 10.53 million head on May 1, 2003. The inventory was 4 percent below May 1, 2002 and 6 percent below May 1, 2001.

Placements in feedlots during April totaled 1.87 million, 29 percent above 2002 and 21 percent above 2001. Net placements were 1.81 million. During April, placements of cattle and calves weighing less than 600 pounds were 296,000, 600-699 pounds were 324,000, 700-799 pounds were 613,000, and 800 pounds and greater were 637,000.

Marketings of fed cattle during April totaled 1.99 million, 1 percent below 2002 but 9 percent above 2001.

Other disappearance totaled 63,000 during April, 24 percent below 2002 and 29 percent below 2001.

**Cattle on Feed: Number on Feed, Placements, Marketings, and
Other Disappearance, 1,000+ Capacity Feedlots,
United States, May 1, 2001-2003**

Item	Number			2003 as % of	
	2001	2002	2003	2001	2002
	<i>1,000 Head</i>	<i>1,000 Head</i>	<i>1,000 Head</i>	<i>Percent</i>	<i>Percent</i>
On Feed Apr 1 ¹	11,523	11,577	10,703	93	92
Placed on Feed During Apr	1,551	1,453	1,870	121	129
Fed Cattle Marketed During Apr	1,815	1,996	1,985	109	99
Other Disappearance During Apr ²	89	83	63	71	76
On Feed May 1 ¹	11,170	10,951	10,525	94	96

¹ Cattle and calves on feed are animals for slaughter market being fed a ration of grain or other concentrates and are expected to produce a carcass that will grade select or better.

² Includes death loss, movement from feedlots to pasture, and shipments to other feedlots for further feeding.

**Cattle on Feed: Number on Feed, Placements, Marketings, and
Other Disappearance, 1,000+ Capacity Feedlots,
United States, April 1, 2001-2003**

Item	Number			2003 as % of	
	2001	2002	2003	2001	2002
	<i>1,000 Head</i>	<i>1,000 Head</i>	<i>1,000 Head</i>	<i>Percent</i>	<i>Percent</i>
On Feed Mar 1 ¹	11,695	11,518	10,526	90	91
Placed on Feed During Mar	1,842	1,953	*2,037	111	104
Fed Cattle Marketed During Mar	1,916	1,825	*1,798	94	99
Other Disappearance During Mar ²	98	69	62	63	90
On Feed Apr 1 ¹	11,523	11,577	10,703	93	92

* Revised.

¹ Cattle and calves on feed are animals for slaughter market being fed a ration of grain or other concentrates and are expected to produce a carcass that will grade select or better.

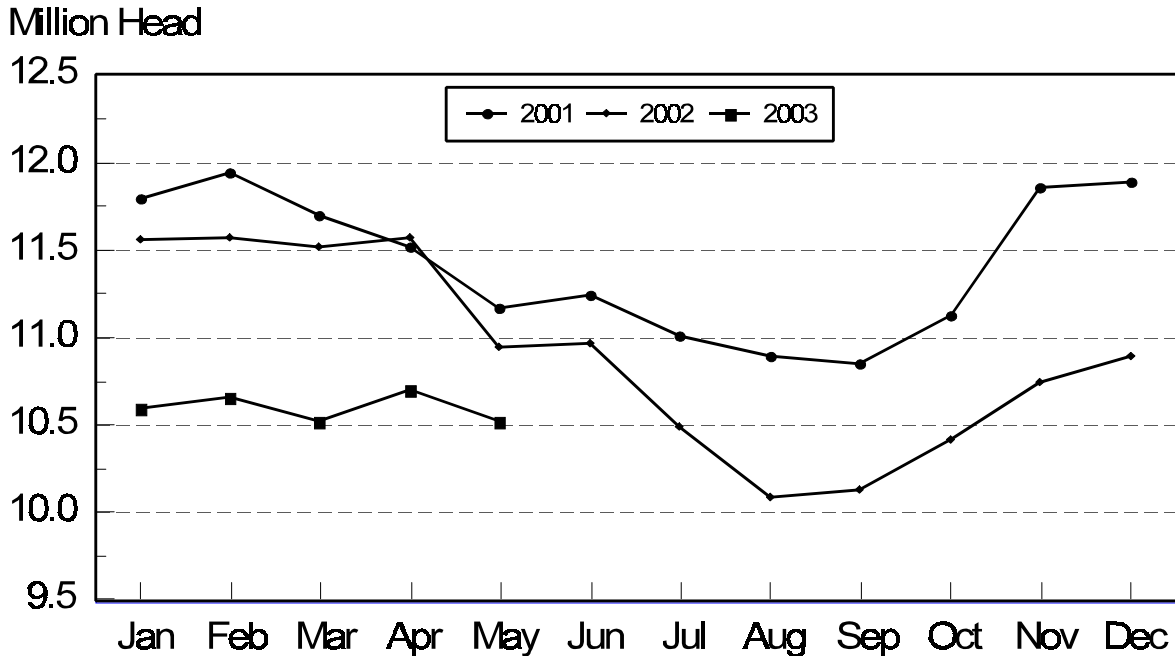
² Includes death loss, movement from feedlots to pasture, and shipments to other feedlots for further feeding.

**Cattle on Feed: Number on Feed, 1,000+ Capacity Feedlots,
by Month, State, and United States 2002-2003 ¹**

State	May 1, 2002	Apr 1, 2003	May 1, 2003		
			Number	as % of 2002	as % of Apr
	<i>1,000 Head</i>	<i>1,000 Head</i>	<i>1,000 Head</i>	<i>Percent</i>	<i>Percent</i>
AZ	304	278	269	88	97
CA	480	470	465	97	99
CO	1,080	970	1,000	93	103
ID	315	280	275	87	98
IA	385	365	360	94	99
KS	2,270	2,320	2,270	100	98
NE	2,170	2,190	2,080	96	95
NM	97	105	101	104	96
OK	340	340	330	97	97
SD	215	215	215	100	100
TX	2,700	2,670	2,680	99	100
WA	215	180	170	79	94
Oth Sts	380	320	310	82	97
US	10,951	10,703	10,525	96	98

¹ Cattle and calves on feed are animals for slaughter market being fed a ration of grain or other concentrates and are expected to produce a carcass that will grade select or better.

**United States Cattle on Feed
1,000+ Capacity Feedlots**



**Cattle on Feed: Number Placed on Feed, 1,000+ Capacity Feedlots,
by Month, State, and United States 2002-2003**

State	During Apr 2002	During Mar 2003	During Apr 2003		
			Number	as % of 2002	as % of Mar
	<i>1,000 Head</i>	<i>1,000 Head</i>	<i>1,000 Head</i>	<i>Percent</i>	<i>Percent</i>
AZ	26	31	32	123	103
CA	59	62	61	103	98
CO	165	*160	200	121	125
ID	52	58	45	87	78
IA	40	56	57	143	102
KS	320	510	420	131	82
NE	260	320	320	123	100
NM	11	16	21	191	131
OK	49	94	68	139	72
SD	28	44	31	111	70
TX	365	600	540	148	90
WA	26	31	25	96	81
Oth Sts	52	55	50	96	91
US	1,453	*2,037	1,870	129	92

* Revised.

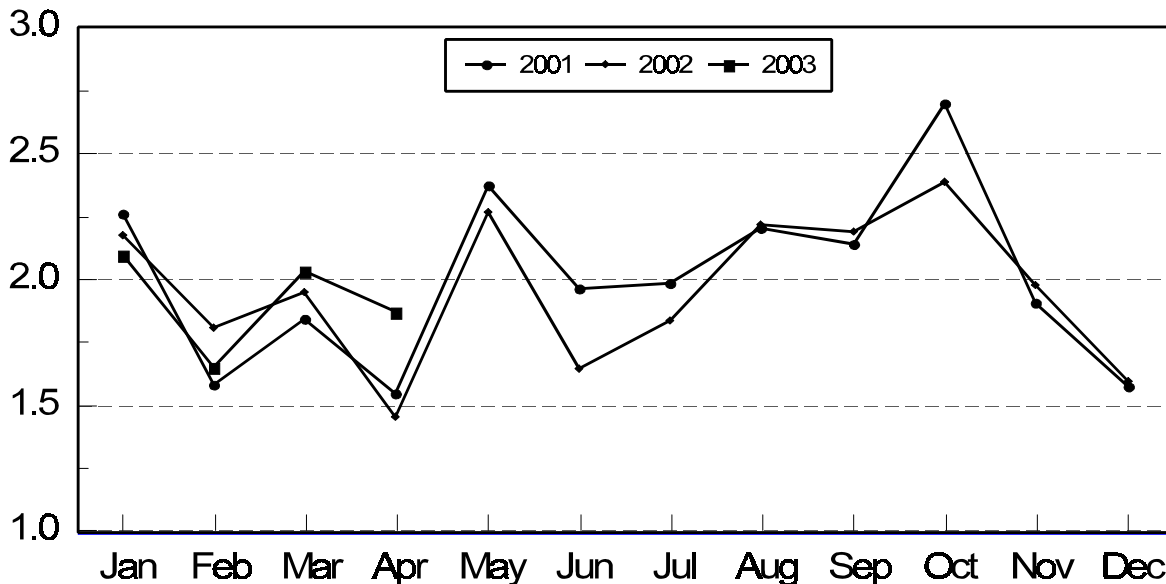
**Cattle on Feed: Number Placed on Feed by Weight Group, 1,000+ Capacity
Feedlots, by Month, State, and United States, 2002-2003**

State	During April									
	Under 600		600-699		700-799		800 Plus		Total	
	2002	2003	2002	2003	2002	2003	2002	2003	2002	2003
	<i>1,000 Head</i>	<i>1,000 Head</i>	<i>1,000 Head</i>	<i>1,000 Head</i>	<i>1,000 Head</i>	<i>1,000 Head</i>	<i>1,000 Head</i>	<i>1,000 Head</i>	<i>1,000 Head</i>	<i>1,000 Head</i>
CO	9	17	33	36	65	72	58	75	165	200
KS	20	50	50	85	125	145	125	140	320	420
NE	26	39	49	53	82	99	103	129	260	320
TX	70	80	80	90	145	192	70	178	365	540
Oth Sts	85	110	43	60	95	105	120	115	343	390
US	210	296	255	324	512	613	476	637	1,453	1,870
	During March									
	Under 600		600-699		700-799		800 Plus		Total	
	2002	2003	2002	2003	2002	2003	2002	2003	2002	2003
	<i>1,000 Head</i>	<i>1,000 Head</i>	<i>1,000 Head</i>	<i>1,000 Head</i>	<i>1,000 Head</i>	<i>1,000 Head</i>	<i>1,000 Head</i>	<i>1,000 Head</i>	<i>1,000 Head</i>	<i>1,000 Head</i>
CO	21	*15	41	*26	72	*61	66	*58	200	*160
KS	45	45	75	105	180	200	135	160	435	510
NE	33	22	63	55	100	113	114	130	310	320
TX	105	78	120	128	225	248	110	146	560	600
Oth Sts	110	115	73	75	125	120	140	137	448	447
US	314	*275	372	*389	702	*742	565	*631	1,953	*2,037

* Revised.

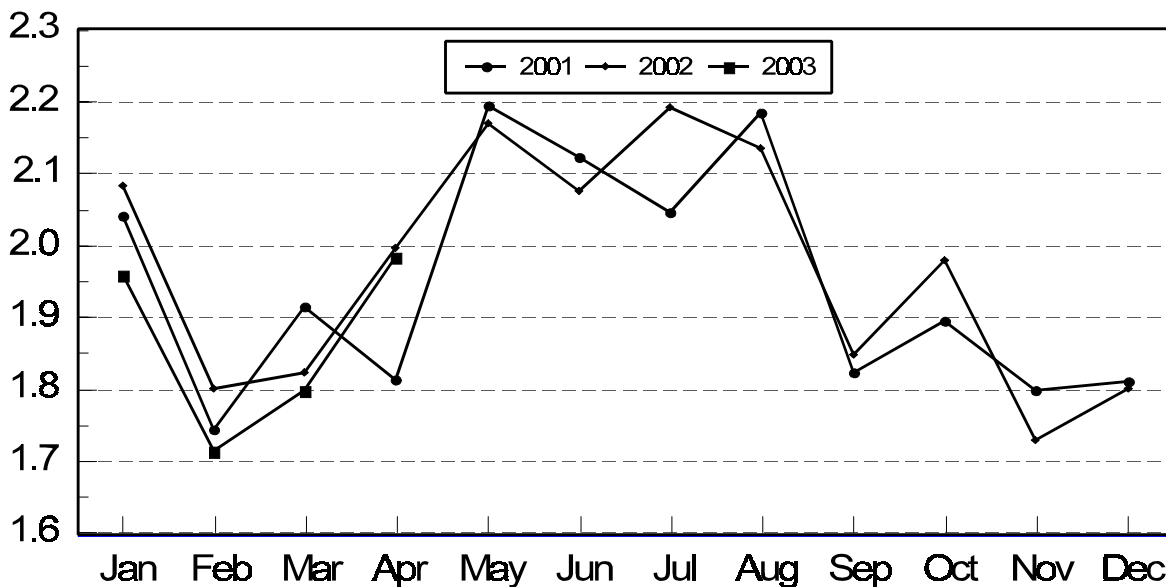
United States Cattle on Feed 1,000+ Capacity Feedlots Number Placed

Million Head



United States Cattle on Feed 1,000+ Capacity Feedlots Number Marketed

Million Head



**Cattle on Feed: Number Marketed, 1,000+ Capacity Feedlots,
by Month, State, and United States 2002-2003**

State	During Apr 2002	During Mar 2003	During Apr 2003		
			Number	as % of 2002	as % of Mar
	<i>1,000 Head</i>	<i>1,000 Head</i>	<i>1,000 Head</i>	<i>Percent</i>	<i>Percent</i>
AZ	34	29	40	118	138
CA	61	58	63	103	109
CO	190	*175	165	87	94
ID	60	57	49	82	86
IA	49	55	60	122	109
KS	445	410	450	101	110
NE	380	310	420	111	135
NM	26	22	24	92	109
OK	67	71	75	112	106
SD	32	43	29	91	67
TX	550	480	520	95	108
WA	39	30	34	87	113
Oth Sts	63	58	56	89	97
US	1,996	*1,798	1,985	99	110

* Revised.

**Cattle on Feed: Other Disappearance, 1,000+ Capacity Feedlots,
by Month, State, and United States 2002-2003 ¹**

State	During Apr 2002	During Mar 2003	During Apr 2003		
			Number	as % of 2002	as % of Mar
	<i>1,000 Head</i>	<i>1,000 Head</i>	<i>1,000 Head</i>	<i>Percent</i>	<i>Percent</i>
AZ	2	3	1	50	33
CA	3	4	3	100	75
CO	15	5	5	33	100
ID	2	1	1	50	100
IA	1	1	2	200	200
KS	25	20	20	80	100
NE	10	10	10	100	100
NM	1	1	1	100	100
OK	2	3	3	150	100
SD	1	1	2	200	200
TX	15	10	10	67	100
WA	2	1	1	50	100
Oth Sts	4	2	4	100	200
US	83	62	63	76	102

¹ Includes death loss, movement from feedlots to pasture, and shipments to other feedlots for further feeding.

Terms and Definitions of Cattle on Feed Estimates

Cattle on feed are animals being fed a ration of grain, silage, hay and/or protein supplement for slaughter market that are expected to produce a carcass that will grade select or better. It excludes cattle being "backgrounded only" for later sale as feeders or later placement in another feedlot.

Placements are cattle put into a feedlot, fed a ration which will produce a carcass that will grade select or better, and are intended for the slaughter market.

Marketings are cattle shipped out of feedlots to a slaughter market.

Other disappearance includes death loss, movement from feedlots to pasture, and shipments to other feedlots for further feeding.

Reliability of Cattle on Feed Estimates

Survey Procedures: During January and July all known feedlots in the U.S. with capacity of 1,000 or more head are surveyed to provide data for cattle on feed estimates. During the other months, all known feedlots from 17 States are surveyed. The 17 States account for 98 percent of the cattle on feed in feedlots with capacity of 1,000 or more head.

Estimating Procedures: These cattle on feed estimates were prepared by the Agricultural Statistics Board after reviewing recommendations and analysis submitted by each State office. Regional and State survey data were reviewed for reasonableness with each other and with estimates from the previous month when setting the current estimates.

Revision Policy: Revisions to previous estimates are made to improve month to month relationships. Estimates for the previous month are subject to revision in all States each month when current estimates are made. In February, all monthly estimates for the previous year, and the number of feedlots and annual marketings from two years ago are reviewed and subject to revisions. The reviews are primarily based on slaughter data, state check-off or brand data, and any other data that may have been received after the original estimate was made. Estimates will also be reviewed after data from the Census of Agriculture are available. No revisions will be made after that date and estimates become final.

Reliability: Since all 1000+ capacity cattle on feed operators in every State are not included in the monthly survey, survey estimates are subject to sampling variability. Survey results are also subject to non-sampling errors such as omissions, duplications, and mistakes in reporting, recording, and processing the data. The effects of these errors cannot be measured directly. They are minimized through rigid quality controls in the data collection process and through a careful review of all reported data for consistency and reasonableness.

The next "Cattle on Feed" report will be released at 3 p.m. ET on June 20, 2003.

The United States Department of Agriculture (USDA) prohibits discrimination in all its programs on the basis of race, color, national origin, gender, religion, age, disability, political beliefs, sexual orientation, and marital or family status. (Not all prohibited bases apply to all programs.) Persons with disabilities who require alternative means for communication of program information (braille, large print, audiotape, etc.) should contact the USDA's TARGET Center at 202-720-2600 (voice and TDD).

To file a complaint of discrimination, write USDA, Director, Office of Civil Rights, Room 326-W, Whitten Building, 1400 Independence Avenue, SW, Washington, D.C., 20250-9410, or call 202-720-5964 (voice or TDD). USDA is an equal opportunity provider and employer.

ACCESS TO REPORTS!!

For your convenience, there are several ways to obtain NASS reports, data products, and services:

INTERNET ACCESS

All NASS reports are available free of charge on the worldwide Internet. For access, connect to the Internet and go to the NASS Home Page at: <http://www.usda.gov/nass/>. Select "Today's Reports" or Publications and then Reports Calendar or Publications and then Search, by Title or Subject.

E-MAIL SUBSCRIPTION

All NASS reports are available by subscription free of charge direct to your e-mail address. Starting with the NASS Home Page at <http://www.usda.gov/nass/>, click on **Publications**, then click on the **Subscribe by E-mail** button which takes you to the page describing e-mail delivery of reports. Finally, click on **Go to the Subscription Page** and follow the instructions.

AUTOFAX ACCESS

NASSFax service is available for some reports from your fax machine. Please call 202-720-2000, using the handset attached to your fax. Respond to the voice prompts. Document 0411 is a list of available reports.

PRINTED REPORTS OR DATA PRODUCTS

CALL OUR TOLL-FREE ORDER DESK: 800-999-6779 (U.S. and Canada)
Other areas, please call 703-605-6220 FAX: 703-605-6900
(Visa, MasterCard, check, or money order acceptable for payment.)

ASSISTANCE

For **assistance** with general agricultural statistics or further information about NASS or its products or services, contact the **Agricultural Statistics Hotline** at **800-727-9540**, 7:30 a.m. to 4:00 p.m. ET, or e-mail: nass@nass.usda.gov.
