



Cattle on Feed

Released July 18, 2003, by the National Agricultural Statistics Service (NASS), Agricultural Statistics Board, U.S. Department of Agriculture. For information on "Cattle on Feed" call Steve Anderson at (202) 720-3040, office hours 7:30 a.m. to 4:00 p.m. ET.

U.S. Cattle on Feed Down 5 Percent

Cattle and calves on feed for slaughter market in the United States for feedlots with capacity of 1,000 or more head totaled 9.92 million head on July 1, 2003. The inventory was 5 percent below July 1, 2002 and 10 percent below July 1, 2001. The inventory included 6.11 million steers and steer calves, down 5 percent from the previous year. This group accounted for 62 percent of the total inventory. Heifers and heifer calves accounted for 3.75 million head, down 5 percent from 2002.

Placements in feedlots during June totaled 1.68 million, 2 percent above 2002 but 14 percent below 2001. Net placements were 1.62 million. During June, placements of cattle and calves weighing less than 600 pounds were 374,000, 600-699 pounds were 361,000, 700-799 pounds were 483,000, and 800 pounds and greater were 464,000.

Marketings of fed cattle during June totaled 2.23 million, 8 percent above 2002 and 5 percent above 2001.

Other disappearance totaled 61,000 during June, 20 percent above 2002 but 21 percent below 2001.

U.S. All Cattle on Feed Down 6 Percent

Cattle on feed July 1, 2003, from all feedlots in the United States, totaled 11.7 million, down 6 percent from the 12.4 million on July 1, 2002 and 10 percent below July 1, 2001. Cattle on feed in feedlots with 1,000 or more head accounted for 85 percent of the total cattle on feed on July 1, 2003.

**Cattle on Feed: Number on Feed, Placements, Marketings, and
Other Disappearance, 1,000+ Capacity Feedlots,
United States, July 1, 2001-2003**

Item	Number			2003 as % of	
	2001	2002	2003	2001	2002
	<i>1,000 Head</i>	<i>1,000 Head</i>	<i>1,000 Head</i>	<i>Percent</i>	<i>Percent</i>
On Feed Jun 1 ¹	11,245	10,970	10,534	94	96
Placed on Feed During Jun	1,965	1,644	1,682	86	102
Fed Cattle Marketed During Jun	2,122	2,076	2,232	105	108
Other Disappearance During Jun ²	77	51	61	79	120
On Feed Jul 1 ¹	11,011	10,487	9,923	90	95

¹ Cattle and calves on feed are animals for slaughter market being fed a ration of grain or other concentrates and are expected to produce a carcass that will grade select or better.

² Includes death loss, movement from feedlots to pasture, and shipments to other feedlots for further feeding.

**Cattle on Feed: Number on Feed, Placements, Marketings, and
Other Disappearance, 1,000+ Capacity Feedlots,
United States, June 1, 2001-2003**

Item	Number			2003 as % of	
	2001	2002	2003	2001	2002
	<i>1,000 Head</i>	<i>1,000 Head</i>	<i>1,000 Head</i>	<i>Percent</i>	<i>Percent</i>
On Feed May 1 ¹	11,170	10,951	10,530	94	96
Placed on Feed During May	2,372	2,267	*2,302	97	102
Fed Cattle Marketed During May	2,196	2,171	*2,233	102	103
Other Disappearance During May ²	101	77	65	64	84
On Feed Jun 1 ¹	11,245	10,970	10,534	94	96

* Revised.

¹ Cattle and calves on feed are animals for slaughter market being fed a ration of grain or other concentrates and are expected to produce a carcass that will grade select or better.

² Includes death loss, movement from feedlots to pasture, and shipments to other feedlots for further feeding.

**Cattle on Feed: Number on Feed by Class, 1,000+ Capacity Feedlots,
United States, July 1, 2001-2003**

Item	Number			2003 as % of	
	2001	2002	2003	2001	2002
	<i>1,000 Head</i>	<i>1,000 Head</i>	<i>1,000 Head</i>	<i>Percent</i>	<i>Percent</i>
Class on Feed Jul 1					
Steers and Steer Calves	6,494	6,457	6,111	94	95
Heifers and Heifer Calves	4,446	3,967	3,751	84	95
Cows and Bulls	71	63	61	86	97

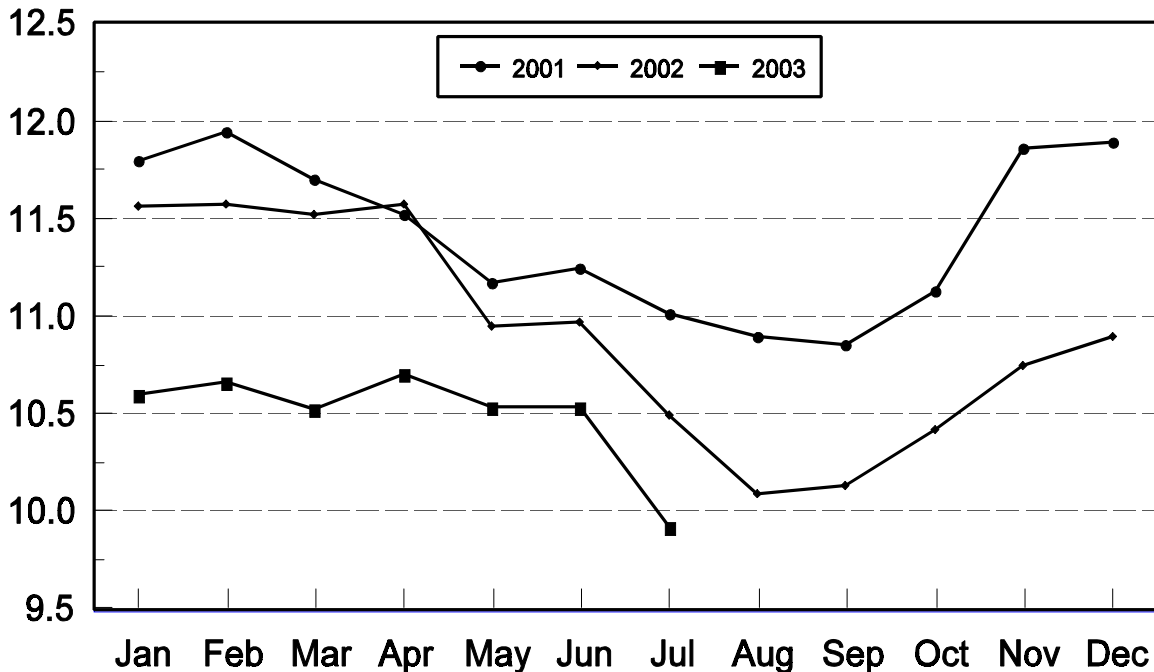
**Cattle on Feed: Number on Feed, 1,000+ Capacity Feedlots,
by Month, State, and United States 2002-2003 ¹**

State	Jul 1, 2002	Jun 1, 2003	Jul 1, 2003		
			Number	as % of 2002	as % of Jun
	<i>1,000 Head</i>	<i>1,000 Head</i>	<i>1,000 Head</i>	<i>Percent</i>	<i>Percent</i>
AZ	291	266	266	91	100
CA	485	485	490	101	101
CO	1,030	990	890	86	90
ID	300	260	255	85	98
IA	350	340	310	89	91
KS	2,160	2,270	2,160	100	95
NE	1,890	1,930	1,690	89	88
NM	101	110	115	114	105
OK	325	360	350	108	97
SD	175	198	167	95	84
TX	2,850	2,880	2,820	99	98
WA	180	160	160	89	100
Oth Sts	350	285	250	71	88
US	10,487	10,534	9,923	95	94

¹ Cattle and calves on feed are animals for slaughter market being fed a ration of grain or other concentrates and are expected to produce a carcass that will grade select or better.

United States Cattle on Feed 1,000+ Capacity Feedlots

Million Head



**Cattle on Feed: Number Placed on Feed, 1,000+ Capacity Feedlots,
by Month, State, and United States 2002-2003**

State	During Jun 2002	During May 2003	During Jun 2003		
			Number	as % of 2002	as % of May
	<i>1,000 Head</i>	<i>1,000 Head</i>	<i>1,000 Head</i>	<i>Percent</i>	<i>Percent</i>
AZ	24	38	34	142	89
CA	67	83	73	109	88
CO	155	*205	135	87	66
ID	49	53	63	129	119
IA	36	48	34	94	71
KS	380	550	415	109	75
NE	295	360	270	92	75
NM	23	30	21	91	70
OK	53	98	52	98	53
SD	18	29	27	150	93
TX	465	730	470	101	64
WA	28	30	39	139	130
Oth Sts	51	48	49	96	102
US	1,644	*2,302	1,682	102	73

* Revised.

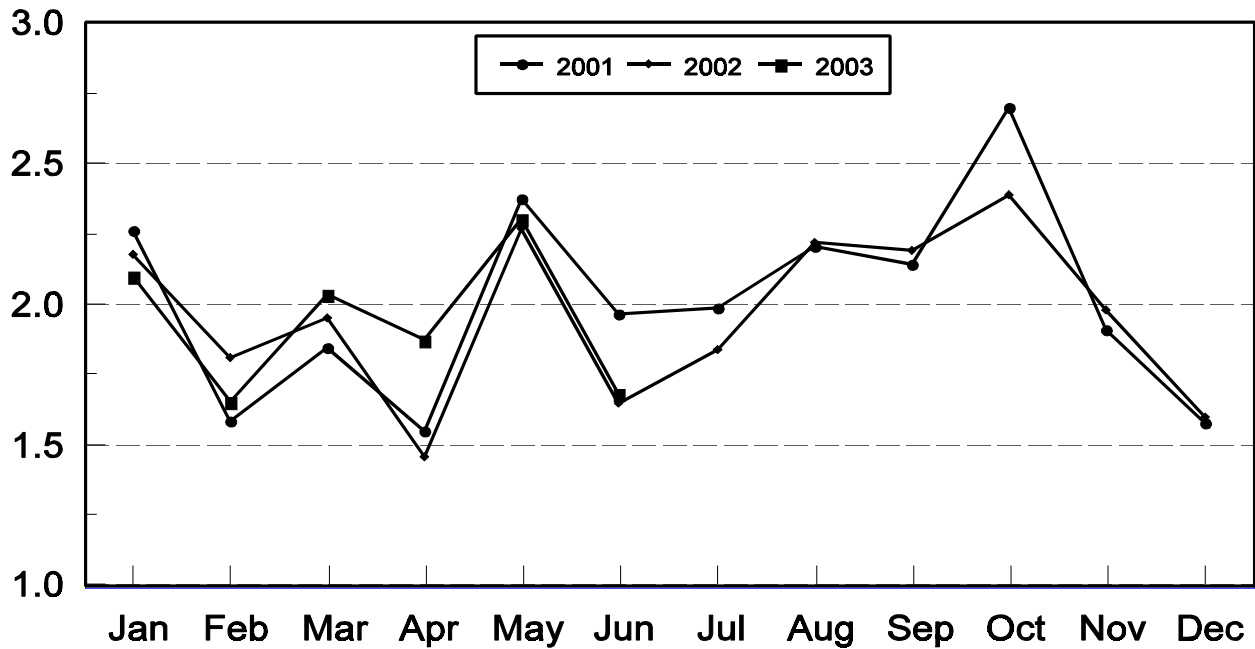
**Cattle on Feed: Number Placed on Feed by Weight Group, 1,000+ Capacity
Feedlots, by Month, State, and United States, 2002-2003**

State	During June									
	Under 600		600-699		700-799		800 Plus		Total	
	2002	2003	2002	2003	2002	2003	2002	2003	2002	2003
	<i>1,000 Head</i>	<i>1,000 Head</i>	<i>1,000 Head</i>	<i>1,000 Head</i>	<i>1,000 Head</i>	<i>1,000 Head</i>	<i>1,000 Head</i>	<i>1,000 Head</i>	<i>1,000 Head</i>	<i>1,000 Head</i>
CO	23	26	43	39	48	38	41	32	155	135
KS	50	80	85	95	155	135	90	105	380	415
NE	33	33	49	50	85	75	128	112	295	270
TX	120	120	130	120	145	145	70	85	465	470
Oth Sts	115	115	49	57	80	90	105	130	349	392
US	341	374	356	361	513	483	434	464	1,644	1,682
State	During May									
	Under 600		600-699		700-799		800 Plus		Total	
	2002	2003	2002	2003	2002	2003	2002	2003	2002	2003
	<i>1,000 Head</i>	<i>1,000 Head</i>	<i>1,000 Head</i>	<i>1,000 Head</i>	<i>1,000 Head</i>	<i>1,000 Head</i>	<i>1,000 Head</i>	<i>1,000 Head</i>	<i>1,000 Head</i>	<i>1,000 Head</i>
CO	14	25	41	*32	73	*78	82	*70	210	*205
KS	50	60	100	85	200	205	170	200	520	550
NE	26	38	47	43	112	131	165	148	350	360
TX	150	150	205	150	265	225	140	205	760	730
Oth Sts	110	135	52	57	110	110	155	155	427	457
US	350	408	445	*367	760	*749	712	*778	2,267	*2,302

* Revised.

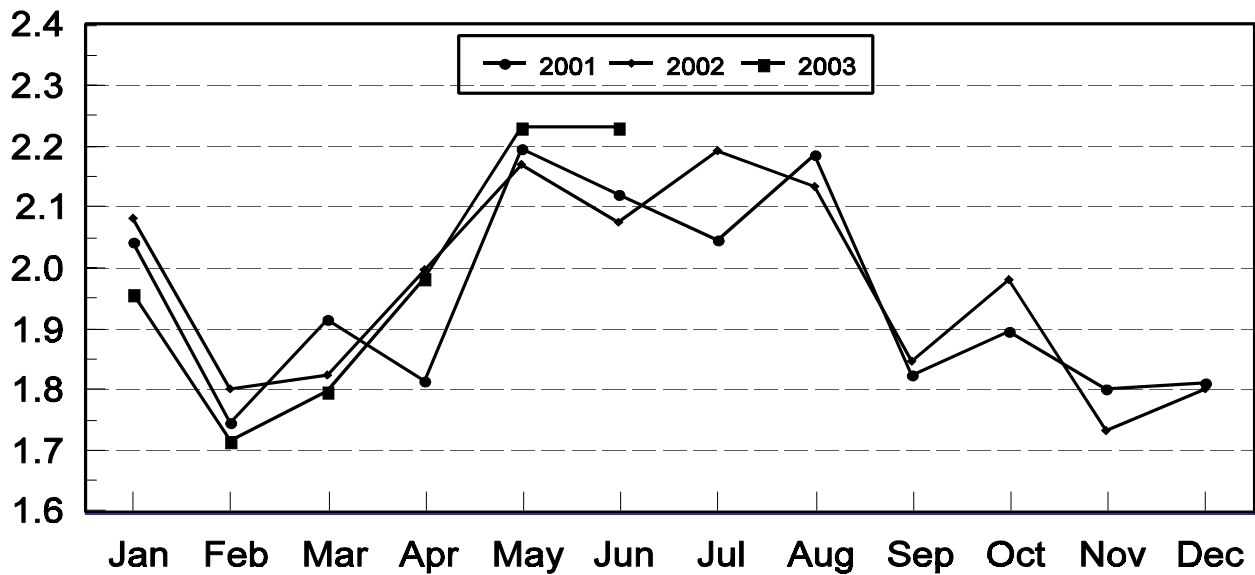
United States Cattle on Feed 1,000+ Capacity Feedlots Number Placed

Million Head



United States Cattle on Feed 1,000+ Capacity Feedlots Number Marketed

Million Head



**Cattle on Feed: Number Marketed, 1,000+ Capacity Feedlots,
by Month, State, and United States 2002-2003**

State	During Jun 2002	During May 2003	During Jun 2003		
			Number	as % of 2002	as % of May
	<i>1,000 Head</i>	<i>1,000 Head</i>	<i>1,000 Head</i>	<i>Percent</i>	<i>Percent</i>
AZ	31	39	32	103	82
CA	62	66	63	102	95
CO	210	*205	230	110	112
ID	58	67	67	116	100
IA	60	65	63	105	97
KS	480	530	510	106	96
NE	460	500	500	109	100
NM	16	20	13	81	65
OK	67	67	59	88	88
SD	47	44	55	117	125
TX	470	520	520	111	100
WA	47	39	38	81	97
Oth Sts	68	71	82	121	115
US	2,076	*2,233	2,232	108	100

* Revised.

**Cattle on Feed: Other Disappearance, 1,000+ Capacity Feedlots,
by Month, State, and United States 2002-2003 ¹**

State	During Jun 2002	During May 2003	During Jun 2003		
			Number	as % of 2002	as % of May
	<i>1,000 Head</i>	<i>1,000 Head</i>	<i>1,000 Head</i>	<i>Percent</i>	<i>Percent</i>
AZ	1	2	2	200	100
CA	5	2	5	100	250
CO	5	10	5	100	50
ID	1	1	1	100	100
IA	1	3	1	100	33
KS	10	20	15	150	75
NE	5	10	10	200	100
NM	2	1	3	150	300
OK	1	1	3	300	300
SD	1	2	3	300	150
TX	15	10	10	67	100
WA	1	1	1	100	100
Oth Sts	3	2	2	67	100
US	51	65	61	120	94

¹ Includes death loss, movement from feedlots to pasture, and shipments to other feedlots for further feeding.

**Cattle on Feed: Number on Feed by Class, 1,000+ Capacity Feedlots,
by Quarter, State, and United States, 2002-2003**

State	Steers & Steer Calves			Heifers & Heifer Calves			Cows and Bulls		
	Jul 1, 2002	Apr 1, 2003	Jul 1, 2003	Jul 1, 2002	Apr 1, 2003	Jul 1, 2003	Jul 1, 2002	Apr 1, 2003	Jul 1, 2003
	<i>1,000 Head</i>	<i>1,000 Head</i>	<i>1,000 Head</i>	<i>1,000 Head</i>	<i>1,000 Head</i>	<i>1,000 Head</i>	<i>1,000 Head</i>	<i>1,000 Head</i>	<i>1,000 Head</i>
AZ	286	274	262	5	4	4	0	0	0
CA	440	440	450	45	30	40	0	0	0
CO	560	590	510	465	375	375	5	5	5
ID	204	179	166	94	100	88	2	1	1
IA	230	235	200	119	129	109	1	1	1
KS	1,200	1,270	1,150	950	1,030	995	10	20	15
NE	1,090	1,305	950	780	860	725	20	25	15
NM	53	52	58	48	53	57	0	0	0
OK	195	220	220	122	118	129	8	2	1
SD	90	110	80	78	97	71	7	8	16
TX	1,735	1,710	1,770	1,110	955	1,048	5	5	2
WA	114	100	100	65	80	60	1	0	0
Oth Sts	260	230	195	86	87	50	4	3	5
US	6,457	6,715	6,111	3,967	3,918	3,751	63	70	61

**Cattle on Feed: Total Number on Feed, United States,
July 1, 2001-2003 ¹**

State	Jul 1, 2001	Jul 1, 2002	July 1, 2003		
			Number	as % of 2001	as % of 2002
	<i>1,000 Head</i>	<i>1,000 Head</i>	<i>1,000 Head</i>	<i>Percent</i>	<i>Percent</i>
US	13,000	12,400	11,700	90	94

¹ Cattle and calves on feed are animals for slaughter market being fed a ration of grain or other concentrates and are expected to produce a carcass that will grade select or better.

Terms and Definitions of Cattle on Feed Estimates

Cattle on feed are animals being fed a ration of grain, silage, hay and/or protein supplement for slaughter market that are expected to produce a carcass that will grade select or better. It excludes cattle being "backgrounded only" for later sale as feeders or later placement in another feedlot.

Placements are cattle put into a feedlot, fed a ration which will produce a carcass that will grade select or better, and are intended for the slaughter market.

Marketings are cattle shipped out of feedlots to a slaughter market.

Other disappearance includes death loss, movement from feedlots to pasture, and shipments to other feedlots for further feeding.

Reliability of Cattle on Feed Estimates

Survey Procedures: During January and July all known feedlots in the U.S. with capacity of 1,000 or more head are surveyed to provide data for cattle on feed estimates. During the other months, all known feedlots from 17 States are surveyed. The 17 States account for 98 percent of the cattle on feed in feedlots with capacity of 1,000 or more head.

Estimating Procedures: These cattle on feed estimates were prepared by the Agricultural Statistics Board after reviewing recommendations and analysis submitted by each State office. Regional and State survey data were reviewed for reasonableness with each other and with estimates from the previous month when setting the current estimates.

Revision Policy: Revisions to previous estimates are made to improve month to month relationships. Estimates for the previous month are subject to revision in all States each month when current estimates are made. In February, all monthly estimates for the previous year, and the number of feedlots and annual marketings from two years ago are reviewed and subject to revisions. The reviews are primarily based on slaughter data, state check-off or brand data, and any other data that may have been received after the original estimate was made. Estimates will also be reviewed after data from the Census of Agriculture are available. No revisions will be made after that date and estimates become final.

Reliability: Since all 1000+ capacity cattle on feed operators in every State are not included in the monthly survey, survey estimates are subject to sampling variability. Survey results are also subject to non-sampling errors such as omissions, duplications, and mistakes in reporting, recording, and processing the data. The effects of these errors cannot be measured directly. They are minimized through rigid quality controls in the data collection process and through a careful review of all reported data for consistency and reasonableness.

The next "*Cattle on Feed*" report will be released at 3 p.m. ET on August 15, 2003.

The United States Department of Agriculture (USDA) prohibits discrimination in all its programs on the basis of race, color, national origin, gender, religion, age, disability, political beliefs, sexual orientation, and marital or family status. (Not all prohibited bases apply to all programs.) Persons with disabilities who require alternative means for communication of program information (braille, large print, audiotape, etc.) should contact the USDA's TARGET Center at 202-720-2600 (voice and TDD).

To file a complaint of discrimination, write USDA, Director, Office of Civil Rights, Room 326-W, Whitten Building, 1400 Independence Avenue, SW, Washington, D.C., 20250-9410, or call 202-720-5964 (voice or TDD). USDA is an equal opportunity provider and employer.

ACCESS TO REPORTS!!

For your convenience, there are several ways to obtain NASS reports, data products, and services:

INTERNET ACCESS

All NASS reports are available free of charge on the worldwide Internet. For access, connect to the Internet and go to the NASS Home Page at: <http://www.usda.gov/nass/>. Select "Today's Reports" or Publications and then Reports Calendar or Publications and then Search, by Title or Subject.

E-MAIL SUBSCRIPTION

All NASS reports are available by subscription free of charge direct to your e-mail address. Starting with the NASS Home Page at <http://www.usda.gov/nass/>, click on **Publications**, then click on the **Subscribe by E-mail** button which takes you to the page describing e-mail delivery of reports. Finally, click on **Go to the Subscription Page** and follow the instructions.

AUTOFAX ACCESS

NASSFax service is available for some reports from your fax machine. Please call 202-720-2000, using the handset attached to your fax. Respond to the voice prompts. Document 0411 is a list of available reports.

PRINTED REPORTS OR DATA PRODUCTS

CALL OUR TOLL-FREE ORDER DESK: 800-999-6779 (U.S. and Canada)
Other areas, please call 703-605-6220 FAX: 703-605-6900
(Visa, MasterCard, check, or money order acceptable for payment.)

ASSISTANCE

For **assistance** with general agricultural statistics or further information about NASS or its products or services, contact the **Agricultural Statistics Hotline** at **800-727-9540**, 7:30 a.m. to 4:00 p.m. ET, or e-mail: nass@nass.usda.gov.
