



Cattle on Feed

Released August 15, 2003, by the National Agricultural Statistics Service (NASS), Agricultural Statistics Board, U.S. Department of Agriculture. For information on "Cattle on Feed" call Steve Anderson at (202) 720-3040, office hours 7:30 a.m. to 4:00 p.m. ET.

U.S. Cattle on Feed Down 5 Percent

Cattle and calves on feed for slaughter market in the United States for feedlots with capacity of 1,000 or more head totaled 9.59 million head on August 1, 2003. The inventory was 5 percent below August 1, 2002 and 12 percent below August 1, 2001.

Placements in feedlots during July totaled 1.99 million, 8 percent above 2002 and slightly above 2001. Net placements were 1.93 million. During July, placements of cattle and calves weighing less than 600 pounds were 421,000, 600-699 pounds were 414,000, 700-799 pounds were 593,000, and 800 pounds and greater were 564,000.

Marketings of fed cattle during July totaled 2.27 million, 4 percent above 2002 and 11 percent above 2001.

Other disappearance totaled 60,000 during July, 33 percent above 2002 and 2 percent above 2001.

**Cattle on Feed: Number on Feed, Placements, Marketings, and
Other Disappearance, 1,000+ Capacity Feedlots,
United States, August 1, 2001-2003**

Item	Number			2003 as % of	
	2001	2002	2003	2001	2002
	<i>1,000 Head</i>	<i>1,000 Head</i>	<i>1,000 Head</i>	<i>Percent</i>	<i>Percent</i>
On Feed Jul 1 ¹	11,011	10,487	9,923	90	95
Placed on Feed During Jul	1,986	1,840	1,992	100	108
Fed Cattle Marketed During Jul	2,047	2,193	2,270	111	104
Other Disappearance During Jul ²	59	45	60	102	133
On Feed Aug 1 ¹	10,891	10,089	9,585	88	95

¹ Cattle and calves on feed are animals for slaughter market being fed a ration of grain or other concentrates and are expected to produce a carcass that will grade select or better.

² Includes death loss, movement from feedlots to pasture, and shipments to other feedlots for further feeding.

**Cattle on Feed: Number on Feed, Placements, Marketings, and
Other Disappearance, 1,000+ Capacity Feedlots,
United States, July 1, 2001-2003**

Item	Number			2003 as % of	
	2001	2002	2003	2001	2002
	<i>1,000 Head</i>	<i>1,000 Head</i>	<i>1,000 Head</i>	<i>Percent</i>	<i>Percent</i>
On Feed Jun 1 ¹	11,245	10,970	10,534	94	96
Placed on Feed During Jun	1,965	1,644	*1,672	85	102
Fed Cattle Marketed During Jun	2,122	2,076	*2,222	105	107
Other Disappearance During Jun ²	77	51	61	79	120
On Feed Jul 1 ¹	11,011	10,487	9,923	90	95

* Revised.

¹ Cattle and calves on feed are animals for slaughter market being fed a ration of grain or other concentrates and are expected to produce a carcass that will grade select or better.

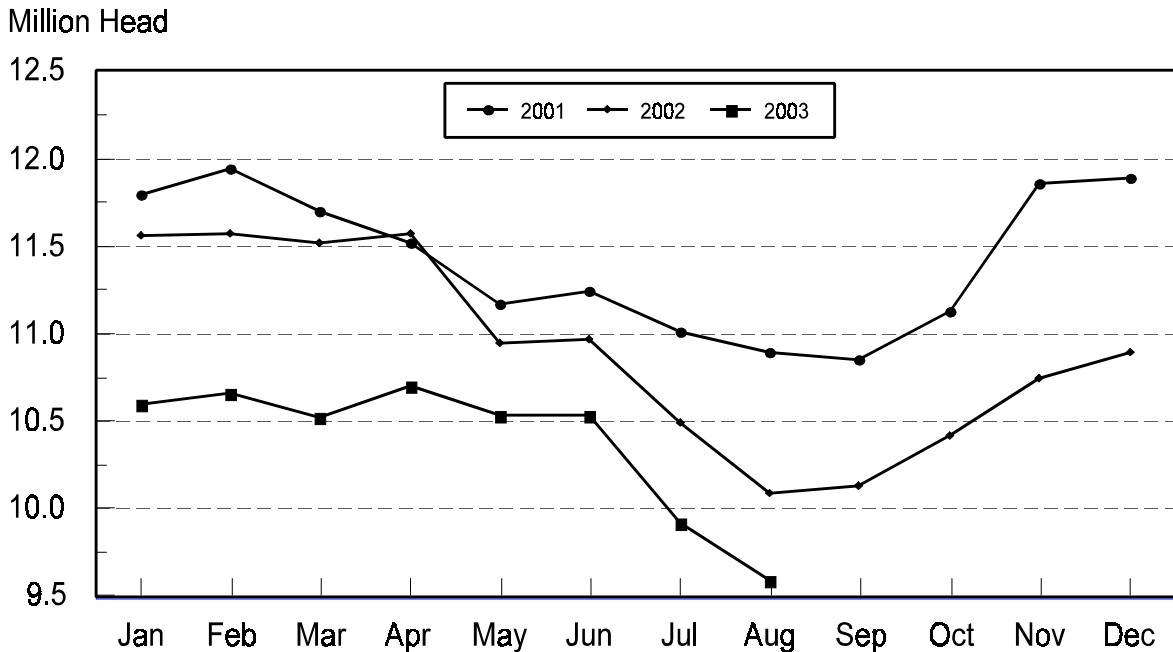
² Includes death loss, movement from feedlots to pasture, and shipments to other feedlots for further feeding.

**Cattle on Feed: Number on Feed, 1,000+ Capacity Feedlots,
by Month, State, and United States 2002-2003 ¹**

State	Aug 1, 2002	Jul 1, 2003	Aug 1, 2003		
			Number	as % of 2002	as % of Jul
	<i>1,000 Head</i>	<i>1,000 Head</i>	<i>1,000 Head</i>	<i>Percent</i>	<i>Percent</i>
AZ	285	266	271	95	102
CA	485	490	485	100	99
CO	990	890	860	87	97
ID	285	255	240	84	94
IA	320	310	290	91	94
KS	2,140	2,160	2,180	102	101
NE	1,790	1,690	1,570	88	93
NM	109	115	116	106	101
OK	310	350	335	108	96
SD	160	167	148	93	89
TX	2,740	2,820	2,690	98	95
WA	165	160	170	103	106
Oth Sts	310	250	230	74	92
US	10,089	9,923	9,585	95	97

¹ Cattle and calves on feed are animals for slaughter market being fed a ration of grain or other concentrates and are expected to produce a carcass that will grade select or better.

**United States Cattle on Feed
1,000+ Capacity Feedlots**



**Cattle on Feed: Number Placed on Feed, 1,000+ Capacity Feedlots,
by Month, State, and United States 2002-2003**

State	During Jul 2002	During Jun 2003	During Jul 2003		
			Number	as % of 2002	as % of Jun
	<i>1,000 Head</i>	<i>1,000 Head</i>	<i>1,000 Head</i>	<i>Percent</i>	<i>Percent</i>
AZ	26	34	32	123	94
CA	59	73	66	112	90
CO	190	*125	175	92	140
ID	52	63	56	108	89
IA	44	34	51	116	150
KS	510	415	570	112	137
NE	400	270	350	88	130
NM	18	21	21	117	100
OK	60	52	75	125	144
SD	18	27	21	117	78
TX	390	470	475	122	101
WA	39	39	50	128	128
Oth Sts	34	49	50	147	102
US	1,840	*1,672	1,992	108	119

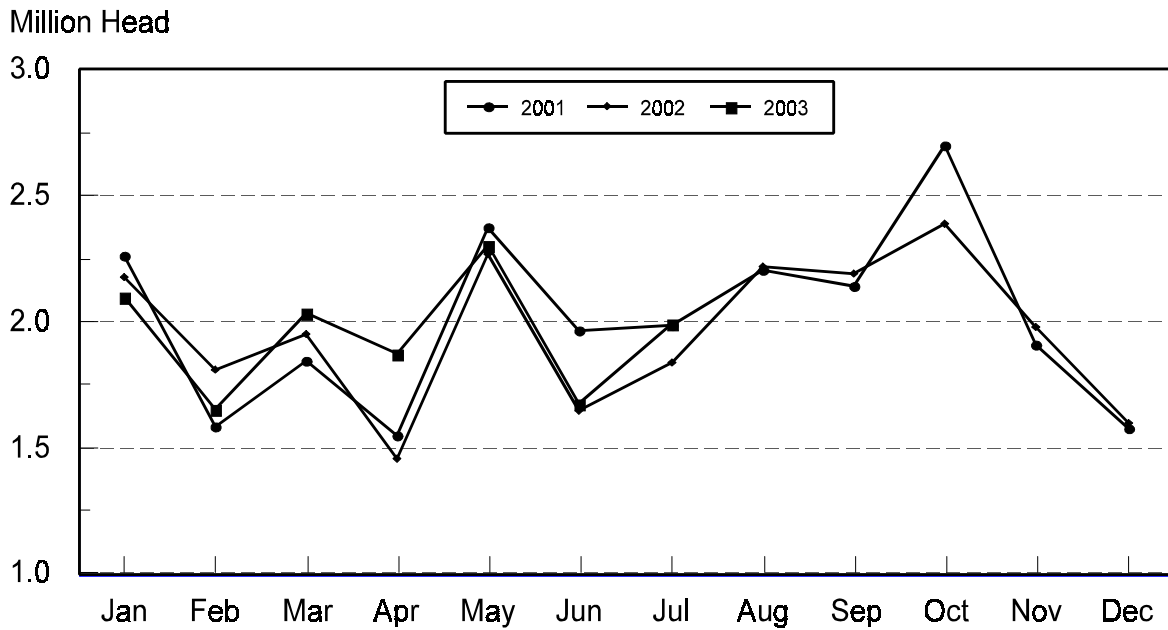
* Revised.

**Cattle on Feed: Number Placed on Feed by Weight Group, 1,000+ Capacity
Feedlots, by Month, State, and United States, 2002-2003**

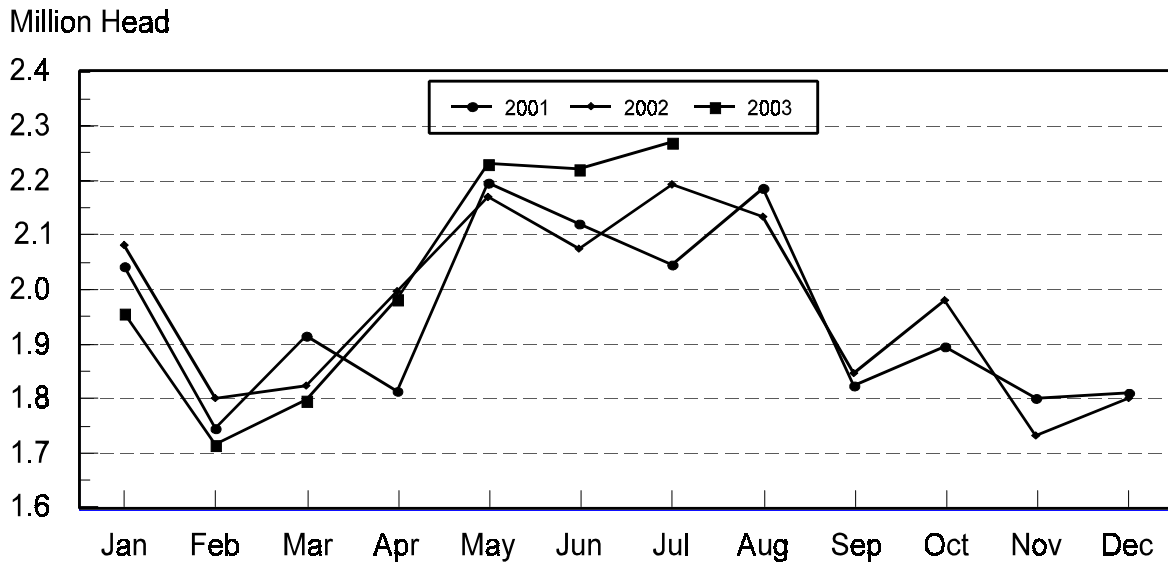
State	During July									
	Under 600		600-699		700-799		800 Plus		Total	
	2002	2003	2002	2003	2002	2003	2002	2003	2002	2003
	<i>1,000 Head</i>	<i>1,000 Head</i>	<i>1,000 Head</i>	<i>1,000 Head</i>	<i>1,000 Head</i>	<i>1,000 Head</i>	<i>1,000 Head</i>	<i>1,000 Head</i>	<i>1,000 Head</i>	<i>1,000 Head</i>
CO	28	24	37	41	65	53	60	57	190	175
KS	70	85	110	125	200	210	130	150	510	570
NE	36	37	83	76	121	105	160	132	400	350
TX	120	155	85	115	125	125	60	80	390	475
Oth Sts	115	120	50	57	80	100	105	145	350	422
US	369	421	365	414	591	593	515	564	1,840	1,992
State	During June									
	Under 600		600-699		700-799		800 Plus		Total	
	2002	2003	2002	2003	2002	2003	2002	2003	2002	2003
	<i>1,000 Head</i>	<i>1,000 Head</i>	<i>1,000 Head</i>	<i>1,000 Head</i>	<i>1,000 Head</i>	<i>1,000 Head</i>	<i>1,000 Head</i>	<i>1,000 Head</i>	<i>1,000 Head</i>	<i>1,000 Head</i>
CO	23	*24	43	*36	48	*35	41	*30	155	*125
KS	50	80	85	95	155	135	90	105	380	415
NE	33	33	49	50	85	75	128	112	295	270
TX	120	120	130	120	145	145	70	85	465	470
Oth Sts	115	115	49	57	80	90	105	130	349	392
US	341	*372	356	*358	513	*480	434	*462	1,644	*1,672

* Revised.

United States Cattle on Feed 1,000+ Capacity Feedlots Number Placed



United States Cattle on Feed 1,000+ Capacity Feedlots Number Marketed



**Cattle on Feed: Number Marketed, 1,000+ Capacity Feedlots,
by Month, State, and United States 2002-2003**

State	During Jul 2002	During Jun 2003	During Jul 2003		
			Number	as % of 2002	as % of Jun
	<i>1,000 Head</i>	<i>1,000 Head</i>	<i>1,000 Head</i>	<i>Percent</i>	<i>Percent</i>
AZ	31	32	26	84	81
CA	56	63	67	120	106
CO	225	*220	200	89	91
ID	66	67	70	106	104
IA	72	63	70	97	111
KS	520	510	540	104	106
NE	495	500	460	93	92
NM	9	13	17	189	131
OK	74	59	85	115	144
SD	30	55	38	127	69
TX	490	520	590	120	113
WA	53	38	39	74	103
Oth Sts	72	82	68	94	83
US	2,193	*2,222	2,270	104	102

* Revised.

**Cattle on Feed: Other Disappearance, 1,000+ Capacity Feedlots,
by Month, State, and United States 2002-2003 ¹**

State	During Jul 2002	During Jun 2003	During Jul 2003		
			Number	as % of 2002	as % of Jun
	<i>1,000 Head</i>	<i>1,000 Head</i>	<i>1,000 Head</i>	<i>Percent</i>	<i>Percent</i>
AZ	1	2	1	100	50
CA	3	5	4	133	80
CO	5	5	5	100	100
ID	1	1	1	100	100
IA	2	1	1	50	100
KS	10	15	10	100	67
NE	5	10	10	200	100
NM	1	3	3	300	100
OK	1	3	5	500	167
SD	3	3	2	67	67
TX	10	10	15	150	150
WA	1	1	1	100	100
Oth Sts	2	2	2	100	100
US	45	61	60	133	98

¹ Includes death loss, movement from feedlots to pasture, and shipments to other feedlots for further feeding.

Terms and Definitions of Cattle on Feed Estimates

Cattle on feed are animals being fed a ration of grain, silage, hay and/or protein supplement for slaughter market that are expected to produce a carcass that will grade select or better. It excludes cattle being "backgrounded only" for later sale as feeders or later placement in another feedlot.

Placements are cattle put into a feedlot, fed a ration which will produce a carcass that will grade select or better, and are intended for the slaughter market.

Marketings are cattle shipped out of feedlots to a slaughter market.

Other disappearance includes death loss, movement from feedlots to pasture, and shipments to other feedlots for further feeding.

Reliability of Cattle on Feed Estimates

Survey Procedures: During January and July all known feedlots in the U.S. with capacity of 1,000 or more head are surveyed to provide data for cattle on feed estimates. During the other months, all known feedlots from 17 States are surveyed. The 17 States account for 98 percent of the cattle on feed in feedlots with capacity of 1,000 or more head.

Estimating Procedures: These cattle on feed estimates were prepared by the Agricultural Statistics Board after reviewing recommendations and analysis submitted by each State office. Regional and State survey data were reviewed for reasonableness with each other and with estimates from the previous month when setting the current estimates.

Revision Policy: Revisions to previous estimates are made to improve month to month relationships. Estimates for the previous month are subject to revision in all States each month when current estimates are made. In February, all monthly estimates for the previous year, and the number of feedlots and annual marketings from two years ago are reviewed and subject to revisions. The reviews are primarily based on slaughter data, state check-off or brand data, and any other data that may have been received after the original estimate was made. Estimates will also be reviewed after data from the Census of Agriculture are available. No revisions will be made after that date and estimates become final.

Reliability: Since all 1000+ capacity cattle on feed operators in every State are not included in the monthly survey, survey estimates are subject to sampling variability. Survey results are also subject to non-sampling errors such as omissions, duplications, and mistakes in reporting, recording, and processing the data. The effects of these errors cannot be measured directly. They are minimized through rigid quality controls in the data collection process and through a careful review of all reported data for consistency and reasonableness.

The next "*Cattle on Feed*" report will be released at 3 p.m. ET on September 19, 2003.

The United States Department of Agriculture (USDA) prohibits discrimination in all its programs on the basis of race, color, national origin, gender, religion, age, disability, political beliefs, sexual orientation, and marital or family status. (Not all prohibited bases apply to all programs.) Persons with disabilities who require alternative means for communication of program information (braille, large print, audiotape, etc.) should contact the USDA's TARGET Center at 202-720-2600 (voice and TDD).

To file a complaint of discrimination, write USDA, Director, Office of Civil Rights, Room 326-W, Whitten Building, 1400 Independence Avenue, SW, Washington, D.C., 20250-9410, or call 202-720-5964 (voice or TDD). USDA is an equal opportunity provider and employer.

ACCESS TO REPORTS!!

For your convenience, there are several ways to obtain NASS reports, data products, and services:

INTERNET ACCESS

All NASS reports are available free of charge on the worldwide Internet. For access, connect to the Internet and go to the NASS Home Page at: <http://www.usda.gov/nass/>. Select "Today's Reports" or Publications and then Reports Calendar or Publications and then Search, by Title or Subject.

E-MAIL SUBSCRIPTION

All NASS reports are available by subscription free of charge direct to your e-mail address. Starting with the NASS Home Page at <http://www.usda.gov/nass/>, click on **Publications**, then click on the **Subscribe by E-mail** button which takes you to the page describing e-mail delivery of reports. Finally, click on **Go to the Subscription Page** and follow the instructions.

AUTOFAX ACCESS

NASSFax service is available for some reports from your fax machine. Please call 202-720-2000, using the handset attached to your fax. Respond to the voice prompts. Document 0411 is a list of available reports.

PRINTED REPORTS OR DATA PRODUCTS

CALL OUR TOLL-FREE ORDER DESK: 800-999-6779 (U.S. and Canada)
Other areas, please call 703-605-6220 FAX: 703-605-6900
(Visa, MasterCard, check, or money order acceptable for payment.)

ASSISTANCE

For **assistance** with general agricultural statistics or further information about NASS or its products or services, contact the **Agricultural Statistics Hotline** at **800-727-9540**, 7:30 a.m. to 4:00 p.m. ET, or e-mail: nass@nass.usda.gov.
