



# Cattle on Feed

---

Released September 19, 2003, by the National Agricultural Statistics Service (NASS), Agricultural Statistics Board, U.S. Department of Agriculture. For information on "*Cattle on Feed*" call Steve Anderson at (202) 720-3040, office hours 7:30 a.m. to 4:00 p.m. ET.

## U.S. Cattle on Feed Down 3 Percent

**Cattle and calves on feed** for slaughter market in the United States for feedlots with capacity of 1,000 or more head totaled 9.83 million head on September 1, 2003. The inventory was 3 percent below September 1, 2002 and 9 percent below September 1, 2001.

**Placements** in feedlots during August totaled 2.37 million, 7 percent above 2002 and 8 percent above 2001. Net placements were 2.31 million. During August, placements of cattle and calves weighing less than 600 pounds were 592,000, 600-699 pounds were 529,000, 700-799 pounds were 659,000, and 800 pounds and greater were 594,000.

**Marketings** of fed cattle during August totaled 2.08 million, 3 percent below 2002 and 5 percent below 2001.

**Other disappearance** totaled 60,000 during August, 40 percent above 2002 and 11 percent above 2001.

**Cattle on Feed: Number on Feed, Placements, Marketings, and  
Other Disappearance, 1,000+ Capacity Feedlots,  
United States, September 1, 2001-2003**

Item	Number			2003 as % of	
	2001	2002	2003	2001	2002
	<i>1,000 Head</i>	<i>1,000 Head</i>	<i>1,000 Head</i>	<i>Percent</i>	<i>Percent</i>
On Feed Aug 1 <sup>1</sup>	10,891	10,089	*9,590	88	95
Placed on Feed During Aug	2,204	2,218	2,374	108	107
Fed Cattle Marketed During Aug	2,186	2,135	2,075	95	97
Other Disappearance During Aug <sup>2</sup>	54	43	60	111	140
On Feed Sep 1 <sup>1</sup>	10,855	10,129	9,829	91	97

\* Revised.

<sup>1</sup> Cattle and calves on feed are animals for slaughter market being fed a ration of grain or other concentrates and are expected to produce a carcass that will grade select or better.

<sup>2</sup> Includes death loss, movement from feedlots to pasture, and shipments to other feedlots for further feeding.

**Cattle on Feed: Number on Feed, Placements, Marketings, and  
Other Disappearance, 1,000+ Capacity Feedlots,  
United States, August 1, 2001-2003**

Item	Number			2003 as % of	
	2001	2002	2003	2001	2002
	<i>1,000 Head</i>	<i>1,000 Head</i>	<i>1,000 Head</i>	<i>Percent</i>	<i>Percent</i>
On Feed Jul 1 <sup>1</sup>	11,011	10,487	9,923	90	95
Placed on Feed During Jul	1,986	1,840	*1,997	101	109
Fed Cattle Marketed During Jul	2,047	2,193	2,270	111	104
Other Disappearance During Jul <sup>2</sup>	59	45	60	102	133
On Feed Aug 1 <sup>1</sup>	10,891	10,089	*9,590	88	95

\* Revised.

<sup>1</sup> Cattle and calves on feed are animals for slaughter market being fed a ration of grain or other concentrates and are expected to produce a carcass that will grade select or better.

<sup>2</sup> Includes death loss, movement from feedlots to pasture, and shipments to other feedlots for further feeding.

**Cattle on Feed: Number on Feed, 1,000+ Capacity Feedlots,  
by Month, State, and United States 2002-2003 <sup>1</sup>**

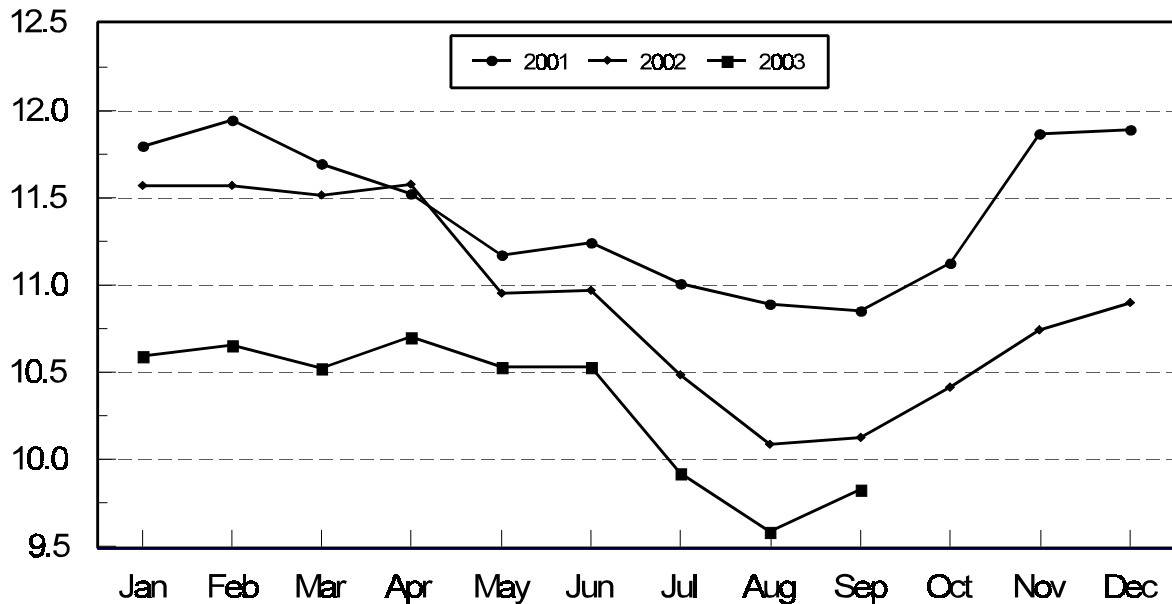
State	Sep 1, 2002	Aug 1, 2003	Sep 1, 2003		
			Number	as % of 2002	as % of Aug
	<i>1,000 Head</i>	<i>1,000 Head</i>	<i>1,000 Head</i>	<i>Percent</i>	<i>Percent</i>
AZ	285	271	274	96	101
CA	490	485	485	99	100
CO	1,000	860	900	90	105
ID	275	240	245	89	102
IA	310	*295	300	97	102
KS	2,230	2,180	2,250	101	103
NE	1,850	1,570	1,660	90	106
NM	114	116	121	106	104
OK	305	335	345	113	103
SD	145	148	134	92	91
TX	2,680	2,690	2,700	101	100
WA	155	170	180	116	106
Oth Sts	290	230	235	81	102
US	10,129	*9,590	9,829	97	102

\* Revised.

<sup>1</sup> Cattle and calves on feed are animals for slaughter market being fed a ration of grain or other concentrates and are expected to produce a carcass that will grade select or better.

**United States Cattle on Feed  
1,000+ Capacity Feedlots**

Million Head



**Cattle on Feed: Number Placed on Feed, 1,000+ Capacity Feedlots,  
by Month, State, and United States 2002-2003**

State	During Aug 2002	During Jul 2003	During Aug 2003		
			Number	as % of 2002	as % of Jul
	<i>1,000 Head</i>	<i>1,000 Head</i>	<i>1,000 Head</i>	<i>Percent</i>	<i>Percent</i>
AZ	30	32	28	93	88
CA	60	66	60	100	91
CO	245	175	240	98	137
ID	58	56	58	100	104
IA	56	*56	79	141	141
KS	570	570	580	102	102
NE	445	350	470	106	134
NM	22	21	23	105	110
OK	74	75	84	114	112
SD	24	21	30	125	143
TX	530	475	610	115	128
WA	40	50	46	115	92
Oth Sts	64	50	66	103	132
US	2,218	*1,997	2,374	107	119

\* Revised.

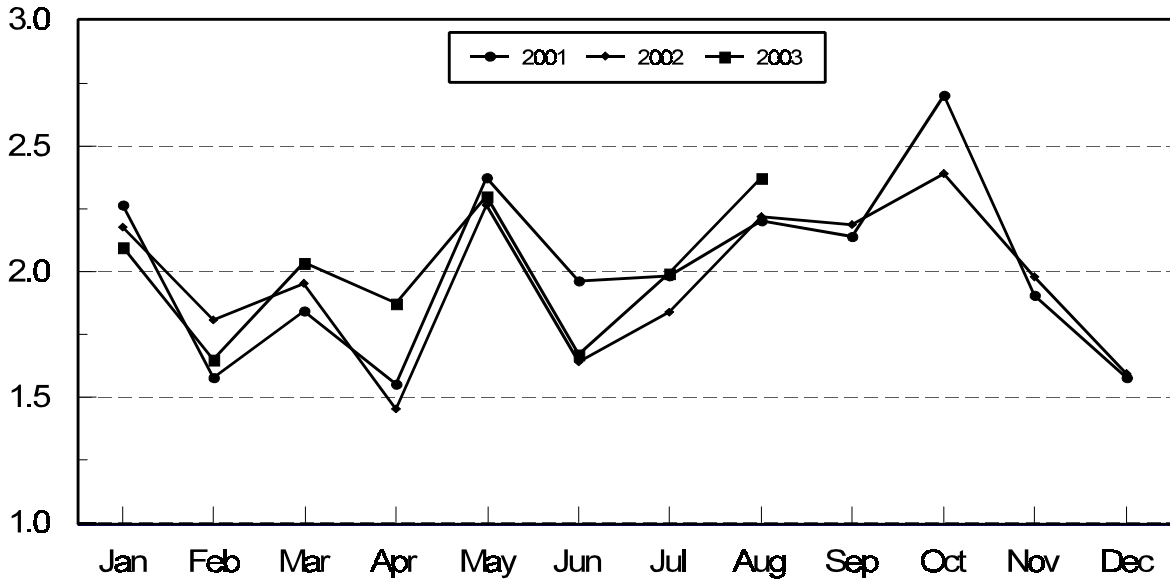
**Cattle on Feed: Number Placed on Feed by Weight Group, 1,000+ Capacity  
Feedlots, by Month, State, and United States, 2002-2003**

State	During August									
	Under 600		600-699		700-799		800 Plus		Total	
	2002	2003	2002	2003	2002	2003	2002	2003	2002	2003
	<i>1,000 Head</i>	<i>1,000 Head</i>	<i>1,000 Head</i>	<i>1,000 Head</i>	<i>1,000 Head</i>	<i>1,000 Head</i>	<i>1,000 Head</i>	<i>1,000 Head</i>	<i>1,000 Head</i>	<i>1,000 Head</i>
CO	35	43	46	55	87	63	77	79	245	240
KS	110	120	140	150	195	205	125	105	570	580
NE	75	74	69	80	123	141	178	175	445	470
TX	175	220	160	170	125	150	70	70	530	610
Oth Sts	130	135	68	74	95	100	135	165	428	474
US	525	592	483	529	625	659	585	594	2,218	2,374
	During July									
	Under 600		600-699		700-799		800 Plus		Total	
	2002	2003	2002	2003	2002	2003	2002	2003	2002	2003
	<i>1,000 Head</i>	<i>1,000 Head</i>	<i>1,000 Head</i>	<i>1,000 Head</i>	<i>1,000 Head</i>	<i>1,000 Head</i>	<i>1,000 Head</i>	<i>1,000 Head</i>	<i>1,000 Head</i>	<i>1,000 Head</i>
CO	28	24	37	41	65	53	60	57	190	175
KS	70	85	110	125	200	210	130	150	510	570
NE	36	37	83	76	121	105	160	132	400	350
TX	120	155	85	115	125	125	60	80	390	475
Oth Sts	115	*125	50	57	80	100	105	145	350	*427
US	369	*426	365	414	591	593	515	564	1,840	*1,997

\* Revised.

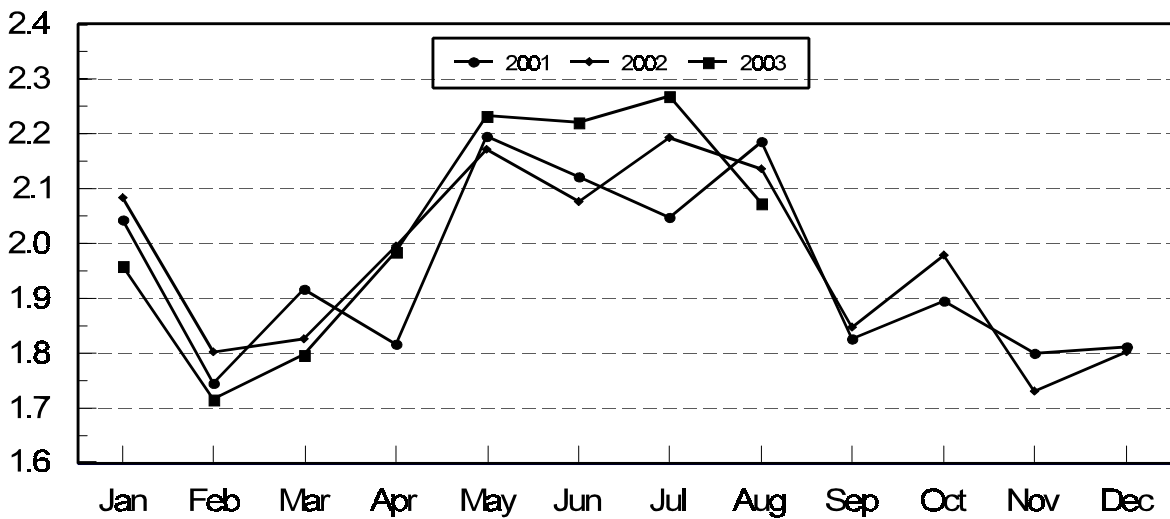
## United States Cattle on Feed 1,000+ Capacity Feedlots Number Placed

Million Head



## United States Cattle on Feed 1,000+ Capacity Feedlots Number Marketed

Million Head



**Cattle on Feed: Number Marketed, 1,000+ Capacity Feedlots,  
by Month, State, and United States 2002-2003**

State	During Aug 2002	During Jul 2003	During Aug 2003		
			Number	as % of 2002	as % of Jul
	<i>1,000 Head</i>	<i>1,000 Head</i>	<i>1,000 Head</i>	<i>Percent</i>	<i>Percent</i>
AZ	29	26	23	79	88
CA	52	67	57	110	85
CO	230	200	195	85	98
ID	67	70	52	78	74
IA	65	70	73	112	104
KS	470	540	500	106	93
NE	380	460	370	97	80
NM	15	17	15	100	88
OK	78	85	72	92	85
SD	38	38	43	113	113
TX	580	590	580	100	98
WA	49	39	35	71	90
Oth Sts	82	68	60	73	88
US	2,135	2,270	2,075	97	91

**Cattle on Feed: Other Disappearance, 1,000+ Capacity Feedlots,  
by Month, State, and United States 2002-2003 <sup>1</sup>**

State	During Aug 2002	During Jul 2003	During Aug 2003		
			Number	as % of 2002	as % of Jul
	<i>1,000 Head</i>	<i>1,000 Head</i>	<i>1,000 Head</i>	<i>Percent</i>	<i>Percent</i>
AZ	1	1	2	200	200
CA	3	4	3	100	75
CO	5	5	5	100	100
ID	1	1	1	100	100
IA	1	1	1	100	100
KS	10	10	10	100	100
NE	5	10	10	200	100
NM	2	3	3	150	100
OK	1	5	2	200	40
SD	1	2	1	100	50
TX	10	15	20	200	133
WA	1	1	1	100	100
Oth Sts	2	2	1	50	50
US	43	60	60	140	100

<sup>1</sup> Includes death loss, movement from feedlots to pasture, and shipments to other feedlots for further feeding.

## Terms and Definitions of Cattle on Feed Estimates

**Cattle on feed** are animals being fed a ration of grain, silage, hay and/or protein supplement for slaughter market that are expected to produce a carcass that will grade select or better. It excludes cattle being "backgrounded only" for later sale as feeders or later placement in another feedlot.

**Placements** are cattle put into a feedlot, fed a ration which will produce a carcass that will grade select or better, and are intended for the slaughter market.

**Marketings** are cattle shipped out of feedlots to a slaughter market.

**Other disappearance** includes death loss, movement from feedlots to pasture, and shipments to other feedlots for further feeding.

## Reliability of Cattle on Feed Estimates

**Survey Procedures:** During January and July all known feedlots in the U.S. with capacity of 1,000 or more head are surveyed to provide data for cattle on feed estimates. During the other months, all known feedlots from 17 States are surveyed. The 17 States account for 98 percent of the cattle on feed in feedlots with capacity of 1,000 or more head.

**Estimating Procedures:** These cattle on feed estimates were prepared by the Agricultural Statistics Board after reviewing recommendations and analysis submitted by each State office. Regional and State survey data were reviewed for reasonableness with each other and with estimates from the previous month when setting the current estimates.

**Revision Policy:** Revisions to previous estimates are made to improve month to month relationships. Estimates for the previous month are subject to revision in all States each month when current estimates are made. In February, all monthly estimates for the previous year, and the number of feedlots and annual marketings from two years ago are reviewed and subject to revisions. The reviews are primarily based on slaughter data, state check-off or brand data, and any other data that may have been received after the original estimate was made. Estimates will also be reviewed after data from the Census of Agriculture are available. No revisions will be made after that date and estimates become final.

**Reliability:** Since all 1000+ capacity cattle on feed operators in every State are not included in the monthly survey, survey estimates are subject to sampling variability. Survey results are also subject to non-sampling errors such as omissions, duplications, and mistakes in reporting, recording, and processing the data. The effects of these errors cannot be measured directly. They are minimized through rigid quality controls in the data collection process and through a careful review of all reported data for consistency and reasonableness.

The next "Cattle on Feed" report will be released at 3 p.m. ET on October 17, 2003.

The United States Department of Agriculture (USDA) prohibits discrimination in all its programs on the basis of race, color, national origin, gender, religion, age, disability, political beliefs, sexual orientation, and marital or family status. (Not all prohibited bases apply to all programs.) Persons with disabilities who require alternative means for communication of program information (braille, large print, audiotape, etc.) should contact the USDA's TARGET Center at 202-720-2600 (voice and TDD).

To file a complaint of discrimination, write USDA, Director, Office of Civil Rights, Room 326-W, Whitten Building, 1400 Independence Avenue, SW, Washington, D.C., 20250-9410, or call 202-720-5964 (voice or TDD). USDA is an equal opportunity provider and employer.

## **ACCESS TO REPORTS!!**

---

For your convenience, there are several ways to obtain NASS reports, data products, and services:

### **INTERNET ACCESS**

All NASS reports are available free of charge on the worldwide Internet. For access, connect to the Internet and go to the NASS Home Page at: <http://www.usda.gov/nass/>. Select "Today's Reports" or Publications and then Reports Calendar or Publications and then Search, by Title or Subject.

### **E-MAIL SUBSCRIPTION**

All NASS reports are available by subscription free of charge direct to your e-mail address. Starting with the NASS Home Page at <http://www.usda.gov/nass/>, click on **Publications**, then click on the **Subscribe by E-mail** button which takes you to the page describing e-mail delivery of reports. Finally, click on **Go to the Subscription Page** and follow the instructions.

### **AUTOFAX ACCESS**

NASSFax service is available for some reports from your fax machine. Please call 202-720-2000, using the handset attached to your fax. Respond to the voice prompts. Document 0411 is a list of available reports.

-----

### **PRINTED REPORTS OR DATA PRODUCTS**

**CALL OUR TOLL-FREE ORDER DESK: 800-999-6779 (U.S. and Canada)**  
**Other areas, please call 703-605-6220      FAX: 703-605-6900**  
**(Visa, MasterCard, check, or money order acceptable for payment.)**

-----

### **ASSISTANCE**

For **assistance** with general agricultural statistics or further information about NASS or its products or services, contact the **Agricultural Statistics Hotline** at **800-727-9540**, 7:30 a.m. to 4:00 p.m. ET, or e-mail: [nass@nass.usda.gov](mailto:nass@nass.usda.gov).

---