



Cattle on Feed

Released October 17, 2003, by the National Agricultural Statistics Service (NASS), Agricultural Statistics Board, U.S. Department of Agriculture. For information on "Cattle on Feed" call Steve Anderson at (202) 720-3040, office hours 7:30 a.m. to 4:00 p.m. ET.

U.S. Cattle on Feed Down 2 Percent

Cattle and calves on feed for slaughter market in the United States for feedlots with capacity of 1,000 or more head totaled 10.2 million head on October 1, 2003. The inventory was 2 percent below October 1, 2002 and 8 percent below October 1, 2001. The inventory included 6.24 million steers and steer calves, down slightly from the previous year. This group accounted for 61 percent of the total inventory. Heifers and heifer calves accounted for 3.91 million head, down 4 percent from 2002.

Placements in feedlots during September totaled 2.47 million, 13 percent above 2002 and 16 percent above 2001. Net placements were 2.41 million. During September, placements of cattle and calves weighing less than 600 pounds were 698,000, 600-699 pounds were 545,000, 700-799 pounds were 610,000, and 800 pounds and greater were 621,000.

Marketings of fed cattle during September totaled 2.03 million, 10 percent above 2002 and 11 percent above 2001.

Other disappearance totaled 63,000 during September, 19 percent above 2002 and 37 percent above 2001.

**Cattle on Feed: Number on Feed, Placements, Marketings, and
Other Disappearance, 1,000+ Capacity Feedlots,
United States, October 1, 2001-2003**

| Item | Number | | | 2003 as % of | |
|---|-------------------|-------------------|-------------------|----------------|----------------|
| | 2001 | 2002 | 2003 | 2001 | 2002 |
| | <i>1,000 Head</i> | <i>1,000 Head</i> | <i>1,000 Head</i> | <i>Percent</i> | <i>Percent</i> |
| On Feed Sep 1 ¹ | 10,855 | 10,129 | *9,834 | 91 | 97 |
| Placed on Feed During Sep | 2,141 | 2,188 | 2,474 | 116 | 113 |
| Fed Cattle Marketed During Sep | 1,825 | 1,848 | 2,032 | 111 | 110 |
| Other Disappearance During Sep ² | 46 | 53 | 63 | 137 | 119 |
| On Feed Oct 1 ¹ | 11,125 | 10,416 | 10,213 | 92 | 98 |

* Revised.

¹ Cattle and calves on feed are animals for slaughter market being fed a ration of grain or other concentrates and are expected to produce a carcass that will grade select or better.

² Includes death loss, movement from feedlots to pasture, and shipments to other feedlots for further feeding.

**Cattle on Feed: Number on Feed, Placements, Marketings, and
Other Disappearance, 1,000+ Capacity Feedlots,
United States, September 1, 2001-2003**

| Item | Number | | | 2003 as % of | |
|---|-------------------|-------------------|-------------------|----------------|----------------|
| | 2001 | 2002 | 2003 | 2001 | 2002 |
| | <i>1,000 Head</i> | <i>1,000 Head</i> | <i>1,000 Head</i> | <i>Percent</i> | <i>Percent</i> |
| On Feed Aug 1 ¹ | 10,891 | 10,089 | 9,590 | 88 | 95 |
| Placed on Feed During Aug | 2,204 | 2,218 | *2,379 | 108 | 107 |
| Fed Cattle Marketed During Aug | 2,186 | 2,135 | 2,075 | 95 | 97 |
| Other Disappearance During Aug ² | 54 | 43 | 60 | 111 | 140 |
| On Feed Sep 1 ¹ | 10,855 | 10,129 | *9,834 | 91 | 97 |

* Revised.

¹ Cattle and calves on feed are animals for slaughter market being fed a ration of grain or other concentrates and are expected to produce a carcass that will grade select or better.

² Includes death loss, movement from feedlots to pasture, and shipments to other feedlots for further feeding.

**Cattle on Feed: Number on Feed by Class, 1,000+ Capacity Feedlots,
United States, October 1, 2001-2003**

| Item | Number | | | 2003 as % of | |
|---------------------------|-------------------|-------------------|-------------------|----------------|----------------|
| | 2001 | 2002 | 2003 | 2001 | 2002 |
| | <i>1,000 Head</i> | <i>1,000 Head</i> | <i>1,000 Head</i> | <i>Percent</i> | <i>Percent</i> |
| Class on Feed Oct 1 | | | | | |
| Steers and Steer Calves | 6,627 | 6,258 | 6,238 | 94 | 100 |
| Heifers and Heifer Calves | 4,447 | 4,084 | 3,911 | 88 | 96 |
| Cows and Bulls | 51 | 74 | 64 | 125 | 86 |

**Cattle on Feed: Number on Feed, 1,000+ Capacity Feedlots,
by Month, State, and United States 2002-2003 ¹**

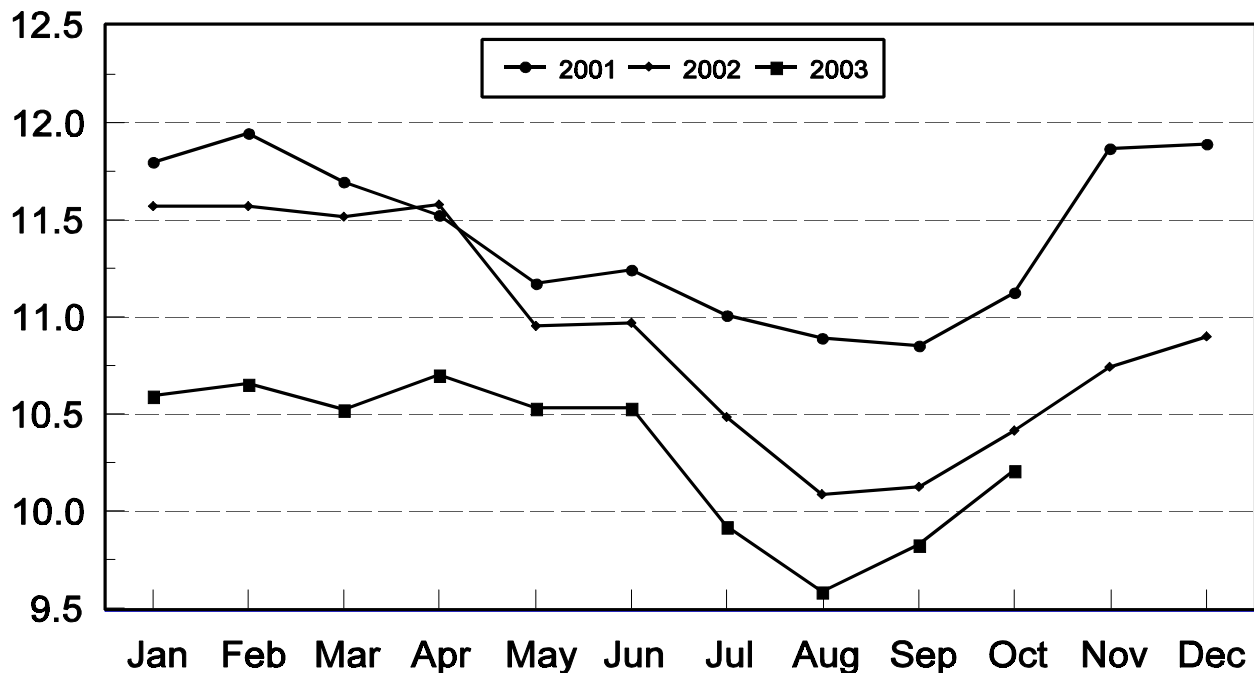
| State | Oct 1, 2002 | Sep 1, 2003 | Oct 1, 2003 | | |
|---------|-------------------|-------------------|-------------------|----------------|----------------|
| | | | Number | as % of 2002 | as % of Sep |
| | <i>1,000 Head</i> | <i>1,000 Head</i> | <i>1,000 Head</i> | <i>Percent</i> | <i>Percent</i> |
| AZ | 288 | 274 | 275 | 95 | 100 |
| CA | 495 | *490 | 485 | 98 | 99 |
| CO | 1,030 | 900 | 950 | 92 | 106 |
| ID | 280 | 245 | 270 | 96 | 110 |
| IA | 315 | 300 | 310 | 98 | 103 |
| KS | 2,280 | 2,250 | 2,300 | 101 | 102 |
| NE | 1,960 | 1,660 | 1,830 | 93 | 110 |
| NM | 113 | 121 | 123 | 109 | 102 |
| OK | 330 | 345 | 350 | 106 | 101 |
| SD | 150 | 134 | 145 | 97 | 108 |
| TX | 2,720 | 2,700 | 2,720 | 100 | 101 |
| WA | 170 | 180 | 190 | 112 | 106 |
| Oth Sts | 285 | 235 | 265 | 93 | 113 |
| US | 10,416 | *9,834 | 10,213 | 98 | 104 |

* Revised.

¹ Cattle and calves on feed are animals for slaughter market being fed a ration of grain or other concentrates and are expected to produce a carcass that will grade select or better.

United States Cattle on Feed 1,000+ Capacity Feedlots

Million Head



**Cattle on Feed: Number Placed on Feed, 1,000+ Capacity Feedlots,
by Month, State, and United States 2002-2003**

| State | During Sep 2002 | During Aug 2003 | During Sep 2003 | | |
|---------|--------------------|--------------------|-------------------|-----------------|----------------|
| | | | Number | as % of 2002 | as % of Aug |
| | <i>1,000 Head</i> | <i>1,000 Head</i> | <i>1,000 Head</i> | <i>Percent</i> | <i>Percent</i> |
| AZ | 30 | 28 | 25 | 83 | 89 |
| CA | 60 | *65 | 61 | 102 | 94 |
| CO | 255 | 240 | 255 | 100 | 106 |
| ID | 69 | 58 | 82 | 119 | 141 |
| IA | 68 | 79 | 80 | 118 | 101 |
| KS | 460 | 580 | 530 | 115 | 91 |
| NE | 450 | 470 | 520 | 116 | 111 |
| NM | 20 | 23 | 16 | 80 | 70 |
| OK | 83 | 84 | 81 | 98 | 96 |
| SD | 49 | 30 | 49 | 100 | 163 |
| TX | 530 | 610 | 620 | 117 | 102 |
| WA | 42 | 46 | 53 | 126 | 115 |
| Oth Sts | 72 | 66 | 102 | 142 | 155 |
| US | 2,188 | *2,379 | 2,474 | 113 | 104 |

* Revised.

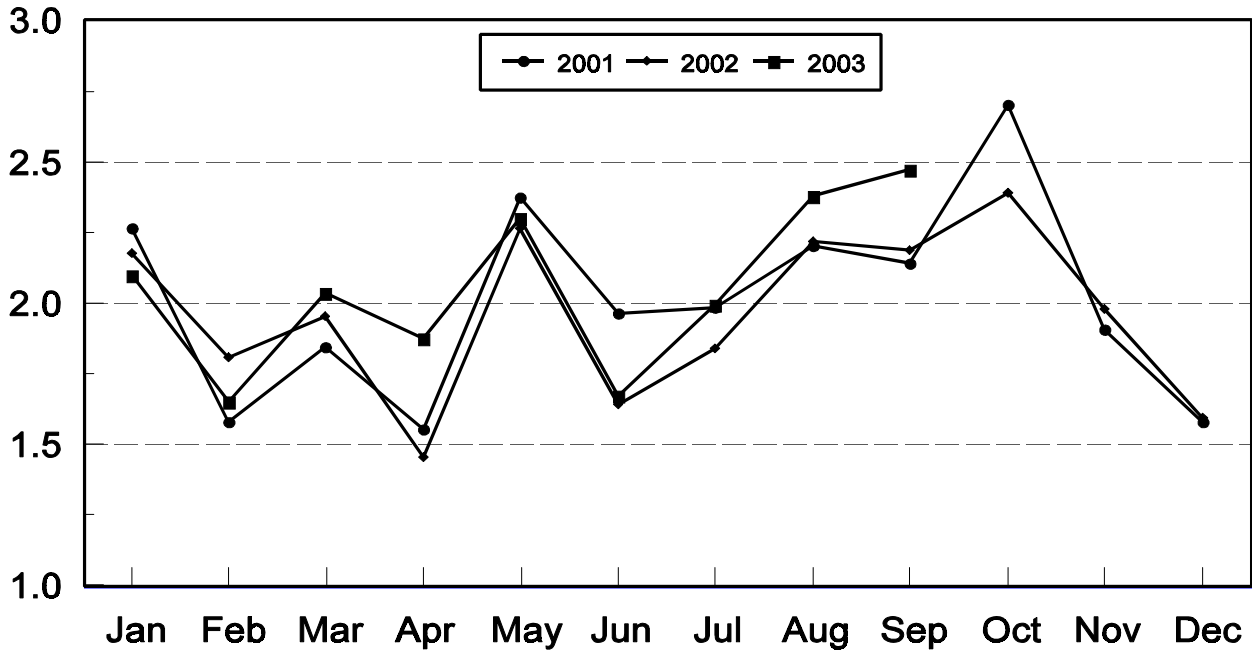
**Cattle on Feed: Number Placed on Feed by Weight Group, 1,000+ Capacity
Feedlots, by Month, State, and United States, 2002-2003**

| State | During September | | | | | | | | | |
|---------|-------------------|-------------------|-------------------|-------------------|-------------------|-------------------|-------------------|-------------------|-------------------|-------------------|
| | Under 600 | | 600-699 | | 700-799 | | 800 Plus | | Total | |
| | 2002 | 2003 | 2002 | 2003 | 2002 | 2003 | 2002 | 2003 | 2002 | 2003 |
| | <i>1,000 Head</i> | <i>1,000 Head</i> | <i>1,000 Head</i> | <i>1,000 Head</i> | <i>1,000 Head</i> | <i>1,000 Head</i> | <i>1,000 Head</i> | <i>1,000 Head</i> | <i>1,000 Head</i> | <i>1,000 Head</i> |
| CO | 51 | 41 | 53 | 46 | 78 | 78 | 73 | 90 | 255 | 255 |
| KS | 105 | 135 | 125 | 140 | 140 | 160 | 90 | 95 | 460 | 530 |
| NE | 133 | 102 | 74 | 95 | 106 | 127 | 137 | 196 | 450 | 520 |
| TX | 170 | 250 | 155 | 185 | 145 | 130 | 60 | 55 | 530 | 620 |
| Oth Sts | 155 | 170 | 80 | 79 | 113 | 115 | 145 | 185 | 493 | 549 |
| US | 614 | 698 | 487 | 545 | 582 | 610 | 505 | 621 | 2,188 | 2,474 |
| | During August | | | | | | | | | |
| | Under 600 | | 600-699 | | 700-799 | | 800 Plus | | Total | |
| | 2002 | 2003 | 2002 | 2003 | 2002 | 2003 | 2002 | 2003 | 2002 | 2003 |
| | <i>1,000 Head</i> | <i>1,000 Head</i> | <i>1,000 Head</i> | <i>1,000 Head</i> | <i>1,000 Head</i> | <i>1,000 Head</i> | <i>1,000 Head</i> | <i>1,000 Head</i> | <i>1,000 Head</i> | <i>1,000 Head</i> |
| CO | 35 | 43 | 46 | 55 | 87 | 63 | 77 | 79 | 245 | 240 |
| KS | 110 | 120 | 140 | 150 | 195 | 205 | 125 | 105 | 570 | 580 |
| NE | 75 | 74 | 69 | 80 | 123 | 141 | 178 | 175 | 445 | 470 |
| TX | 175 | 220 | 160 | 170 | 125 | 150 | 70 | 70 | 530 | 610 |
| Oth Sts | 130 | *140 | 68 | 74 | 95 | 100 | 135 | 165 | 428 | *479 |
| US | 525 | *597 | 483 | 529 | 625 | 659 | 585 | 594 | 2,218 | *2,379 |

* Revised.

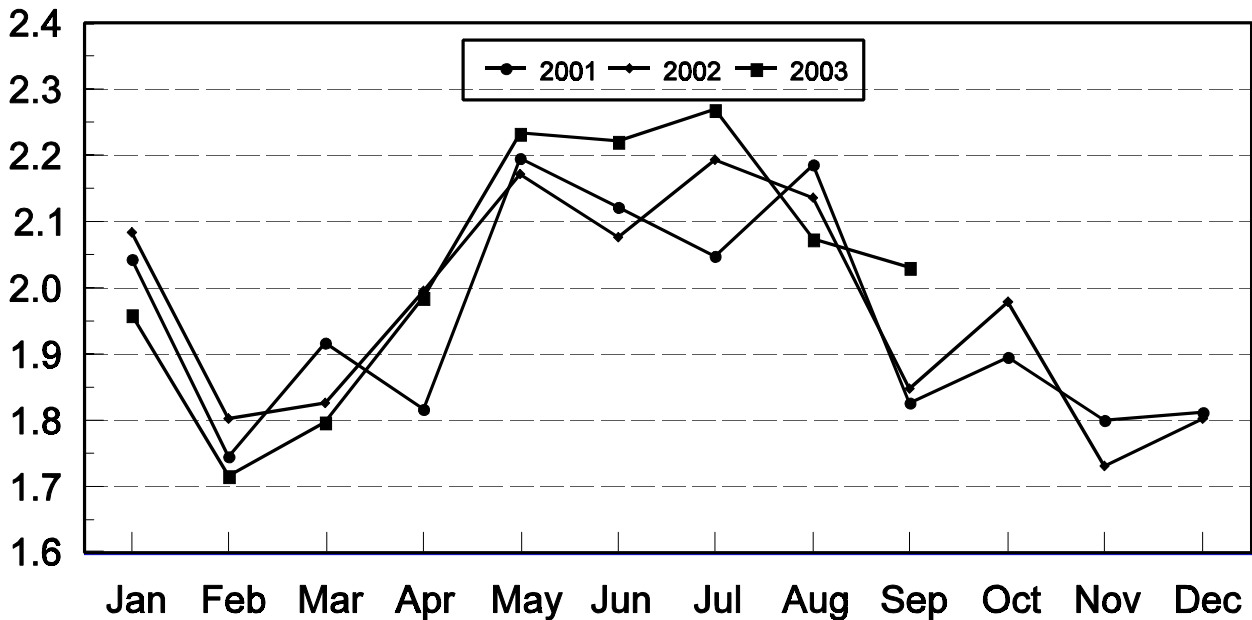
United States Cattle on Feed 1,000+ Capacity Feedlots Number Placed

Million Head



United States Cattle on Feed 1,000+ Capacity Feedlots Number Marketed

Million Head



**Cattle on Feed: Number Marketed, 1,000+ Capacity Feedlots,
by Month, State, and United States 2002-2003**

| State | During Sep 2002 | During Aug 2003 | During Sep 2003 | | |
|---------|--------------------|--------------------|-------------------|-----------------|----------------|
| | | | Number | as % of 2002 | as % of Aug |
| | <i>1,000 Head</i> | <i>1,000 Head</i> | <i>1,000 Head</i> | <i>Percent</i> | <i>Percent</i> |
| AZ | 26 | 23 | 23 | 88 | 100 |
| CA | 52 | 57 | 63 | 121 | 111 |
| CO | 220 | 195 | 200 | 91 | 103 |
| ID | 63 | 52 | 56 | 89 | 108 |
| IA | 62 | 73 | 69 | 111 | 95 |
| KS | 400 | 500 | 465 | 116 | 93 |
| NE | 335 | 370 | 345 | 103 | 93 |
| NM | 18 | 15 | 10 | 56 | 67 |
| OK | 57 | 72 | 73 | 128 | 101 |
| SD | 43 | 43 | 37 | 86 | 86 |
| TX | 470 | 580 | 580 | 123 | 100 |
| WA | 26 | 35 | 41 | 158 | 117 |
| Oth Sts | 76 | 60 | 70 | 92 | 117 |
| US | 1,848 | 2,075 | 2,032 | 110 | 98 |

**Cattle on Feed: Other Disappearance, 1,000+ Capacity Feedlots,
by Month, State, and United States 2002-2003 ¹**

| State | During Sep 2002 | During Aug 2003 | During Sep 2003 | | |
|---------|--------------------|--------------------|-------------------|-----------------|----------------|
| | | | Number | as % of 2002 | as % of Aug |
| | <i>1,000 Head</i> | <i>1,000 Head</i> | <i>1,000 Head</i> | <i>Percent</i> | <i>Percent</i> |
| AZ | 1 | 2 | 1 | 100 | 50 |
| CA | 3 | 3 | 3 | 100 | 100 |
| CO | 5 | 5 | 5 | 100 | 100 |
| ID | 1 | 1 | 1 | 100 | 100 |
| IA | 1 | 1 | 1 | 100 | 100 |
| KS | 10 | 10 | 15 | 150 | 150 |
| NE | 5 | 10 | 5 | 100 | 50 |
| NM | 3 | 3 | 4 | 133 | 133 |
| OK | 1 | 2 | 3 | 300 | 150 |
| SD | 1 | 1 | 1 | 100 | 100 |
| TX | 20 | 20 | 20 | 100 | 100 |
| WA | 1 | 1 | 2 | 200 | 200 |
| Oth Sts | 1 | 1 | 2 | 200 | 200 |
| US | 53 | 60 | 63 | 119 | 105 |

¹ Includes death loss, movement from feedlots to pasture, and shipments to other feedlots for further feeding.

**Cattle on Feed: Number on Feed by Class, 1,000+ Capacity Feedlots,
by Quarter, State, and United States, 2002-2003**

| State | Steers & Steer Calves | | | Heifers & Heifer Calves | | | Cows and Bulls | | |
|---------|-----------------------|-------------------|-------------------|-------------------------|-------------------|-------------------|-------------------|-------------------|-------------------|
| | Oct 1, 2002 | Jul 1, 2003 | Oct 1, 2003 | Oct 1, 2002 | Jul 1, 2003 | Oct 1, 2003 | Oct 1, 2002 | Jul 1, 2003 | Oct 1, 2003 |
| | <i>1,000 Head</i> | <i>1,000 Head</i> | <i>1,000 Head</i> | <i>1,000 Head</i> | <i>1,000 Head</i> | <i>1,000 Head</i> | <i>1,000 Head</i> | <i>1,000 Head</i> | <i>1,000 Head</i> |
| AZ | 281 | 262 | 271 | 7 | 4 | 4 | 0 | 0 | 0 |
| CA | 455 | 450 | 445 | 38 | 40 | 40 | 2 | 0 | 0 |
| CO | 585 | 510 | 580 | 440 | 375 | 365 | 5 | 5 | 5 |
| ID | 194 | 166 | 166 | 86 | 88 | 104 | 0 | 1 | 0 |
| IA | 200 | 200 | 200 | 114 | 109 | 109 | 1 | 1 | 1 |
| KS | 1,240 | 1,150 | 1,220 | 1,030 | 995 | 1,060 | 10 | 15 | 20 |
| NE | 1,030 | 950 | 1,010 | 890 | 725 | 805 | 40 | 15 | 15 |
| NM | 60 | 58 | 54 | 53 | 57 | 69 | 0 | 0 | 0 |
| OK | 200 | 220 | 215 | 125 | 129 | 131 | 5 | 1 | 4 |
| SD | 68 | 80 | 77 | 75 | 71 | 59 | 7 | 16 | 9 |
| TX | 1,620 | 1,770 | 1,700 | 1,097 | 1,048 | 1,018 | 3 | 2 | 2 |
| WA | 110 | 100 | 110 | 60 | 60 | 77 | 0 | 0 | 3 |
| Oth Sts | 215 | 195 | 190 | 69 | 50 | 70 | 1 | 5 | 5 |
| US | 6,258 | 6,111 | 6,238 | 4,084 | 3,751 | 3,911 | 74 | 61 | 64 |

Terms and Definitions of Cattle on Feed Estimates

Cattle on feed are animals being fed a ration of grain, silage, hay and/or protein supplement for slaughter market that are expected to produce a carcass that will grade select or better. It excludes cattle being "backgrounded only" for later sale as feeders or later placement in another feedlot.

Placements are cattle put into a feedlot, fed a ration which will produce a carcass that will grade select or better, and are intended for the slaughter market.

Marketings are cattle shipped out of feedlots to a slaughter market.

Other disappearance includes death loss, movement from feedlots to pasture, and shipments to other feedlots for further feeding.

Reliability of Cattle on Feed Estimates

Survey Procedures: During January and July all known feedlots in the U.S. with capacity of 1,000 or more head are surveyed to provide data for cattle on feed estimates. During the other months, all known feedlots from 17 States are surveyed. The 17 States account for 98 percent of the cattle on feed in feedlots with capacity of 1,000 or more head.

Estimating Procedures: These cattle on feed estimates were prepared by the Agricultural Statistics Board after reviewing recommendations and analysis submitted by each State office. Regional and State survey data were reviewed for reasonableness with each other and with estimates from the previous month when setting the current estimates.

Revision Policy: Revisions to previous estimates are made to improve month to month relationships. Estimates for the previous month are subject to revision in all States each month when current estimates are made. In February, all monthly estimates for the previous year, and the number of feedlots and annual marketings from two years ago are reviewed and subject to revisions. The reviews are primarily based on slaughter data, state check-off or brand data, and any other data that may have been received after the original estimate was made. Estimates will also be reviewed after data from the Census of Agriculture are available. No revisions will be made after that date and estimates become final.

Reliability: Since all 1000+ capacity cattle on feed operators in every State are not included in the monthly survey, survey estimates are subject to sampling variability. Survey results are also subject to non-sampling errors such as omissions, duplications, and mistakes in reporting, recording, and processing the data. The effects of these errors cannot be measured directly. They are minimized through rigid quality controls in the data collection process and through a careful review of all reported data for consistency and reasonableness.

The next "*Cattle on Feed*" report will be released at 3 p.m. ET on November 21, 2003.

The United States Department of Agriculture (USDA) prohibits discrimination in all its programs on the basis of race, color, national origin, gender, religion, age, disability, political beliefs, sexual orientation, and marital or family status. (Not all prohibited bases apply to all programs.) Persons with disabilities who require alternative means for communication of program information (braille, large print, audiotape, etc.) should contact the USDA's TARGET Center at 202-720-2600 (voice and TDD).

To file a complaint of discrimination, write USDA, Director, Office of Civil Rights, Room 326-W, Whitten Building, 1400 Independence Avenue, SW, Washington, D.C., 20250-9410, or call 202-720-5964 (voice or TDD). USDA is an equal opportunity provider and employer.

ACCESS TO REPORTS!!

For your convenience, there are several ways to obtain NASS reports, data products, and services:

INTERNET ACCESS

All NASS reports are available free of charge on the worldwide Internet. For access, connect to the Internet and go to the NASS Home Page at: <http://www.usda.gov/nass/>. Select "Today's Reports" or Publications and then Reports Calendar or Publications and then Search, by Title or Subject.

E-MAIL SUBSCRIPTION

All NASS reports are available by subscription free of charge direct to your e-mail address. Starting with the NASS Home Page at <http://www.usda.gov/nass/>, click on **Publications**, then click on the **Subscribe by E-mail** button which takes you to the page describing e-mail delivery of reports. Finally, click on **Go to the Subscription Page** and follow the instructions.

PRINTED REPORTS OR DATA PRODUCTS

CALL OUR TOLL-FREE ORDER DESK: 800-999-6779 (U.S. and Canada)
Other areas, please call 703-605-6220 FAX: 703-605-6900
(Visa, MasterCard, check, or money order acceptable for payment.)

ASSISTANCE

For **assistance** with general agricultural statistics or further information about NASS or its products or services, contact the **Agricultural Statistics Hotline** at **800-727-9540**, 7:30 a.m. to 4:00 p.m. ET, or e-mail: nass@nass.usda.gov.
