



Cattle on Feed

Released November 21, 2003, by the National Agricultural Statistics Service (NASS), Agricultural Statistics Board, U.S. Department of Agriculture. For information on "*Cattle on Feed*" call Steve Anderson at (202) 720-3040, office hours 7:30 a.m. to 4:00 p.m. ET.

U.S. Cattle on Feed Up 3 Percent

Cattle and calves on feed for slaughter market in the United States for feedlots with capacity of 1,000 or more head totaled 11.0 million head on November 1, 2003. The inventory was 3 percent above November 1, 2002 but 7 percent below November 1, 2001.

Placements in feedlots during October totaled 2.78 million, 16 percent above 2002 and 3 percent above 2001. Net placements were 2.68 million. During October, placements of cattle and calves weighing less than 600 pounds were 1.02 million, 600-699 pounds were 796,000, 700-799 pounds were 508,000, and 800 pounds and greater were 454,000.

Marketings of fed cattle during October totaled 1.86 million, 6 percent below 2002 and 2 percent below 2001.

Other disappearance totaled 101,000 during October, 20 percent above 2002 and 49 percent above 2001.

**Cattle on Feed: Number on Feed, Placements, Marketings, and
Other Disappearance, 1,000+ Capacity Feedlots,
United States, November 1, 2001-2003**

Item	Number			2003 as % of	
	2001	2002	2003	2001	2002
	<i>1,000 Head</i>	<i>1,000 Head</i>	<i>1,000 Head</i>	<i>Percent</i>	<i>Percent</i>
On Feed Oct 1 ¹	11,125	10,416	10,213	92	98
Placed on Feed During Oct	2,702	2,389	2,781	103	116
Fed Cattle Marketed During Oct	1,896	1,979	1,855	98	94
Other Disappearance During Oct ²	68	84	101	149	120
On Feed Nov 1 ¹	11,863	10,742	11,038	93	103

¹ Cattle and calves on feed are animals for slaughter market being fed a ration of grain or other concentrates and are expected to produce a carcass that will grade select or better.

² Includes death loss, movement from feedlots to pasture, and shipments to other feedlots for further feeding.

**Cattle on Feed: Number on Feed, Placements, Marketings, and
Other Disappearance, 1,000+ Capacity Feedlots,
United States, October 1, 2001-2003**

Item	Number			2003 as % of	
	2001	2002	2003	2001	2002
	<i>1,000 Head</i>	<i>1,000 Head</i>	<i>1,000 Head</i>	<i>Percent</i>	<i>Percent</i>
On Feed Sep 1 ¹	10,855	10,129	9,834	91	97
Placed on Feed During Sep	2,141	2,188	2,474	116	113
Fed Cattle Marketed During Sep	1,825	1,848	2,032	111	110
Other Disappearance During Sep ²	46	53	63	137	119
On Feed Oct 1 ¹	11,125	10,416	10,213	92	98

¹ Cattle and calves on feed are animals for slaughter market being fed a ration of grain or other concentrates and are expected to produce a carcass that will grade select or better.

² Includes death loss, movement from feedlots to pasture, and shipments to other feedlots for further feeding.

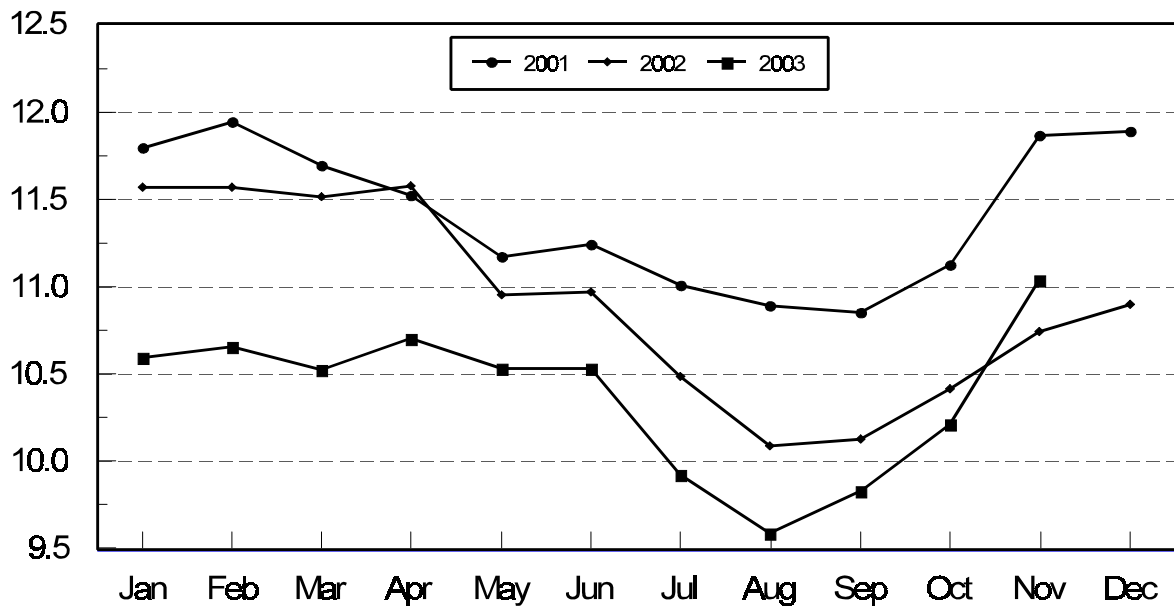
**Cattle on Feed: Number on Feed, 1,000+ Capacity Feedlots,
by Month, State, and United States 2002-2003 ¹**

State	Nov 1, 2002	Oct 1, 2003	Nov 1, 2003		
			Number	as % of 2002	as % of Oct
	<i>1,000 Head</i>	<i>1,000 Head</i>	<i>1,000 Head</i>	<i>Percent</i>	<i>Percent</i>
AZ	290	275	278	96	101
CA	490	485	495	101	102
CO	1,060	950	1,050	99	111
ID	295	270	295	100	109
IA	335	310	350	104	113
KS	2,300	2,300	2,430	106	106
NE	2,110	1,830	2,140	101	117
NM	117	123	118	101	96
OK	340	350	350	103	100
SD	170	145	177	104	122
TX	2,730	2,720	2,840	104	104
WA	185	190	195	105	103
Oth Sts	320	265	320	100	121
US	10,742	10,213	11,038	103	108

¹ Cattle and calves on feed are animals for slaughter market being fed a ration of grain or other concentrates and are expected to produce a carcass that will grade select or better.

**United States Cattle on Feed
1,000+ Capacity Feedlots**

Million Head



**Cattle on Feed: Number Placed on Feed, 1,000+ Capacity Feedlots,
by Month, State, and United States 2002-2003**

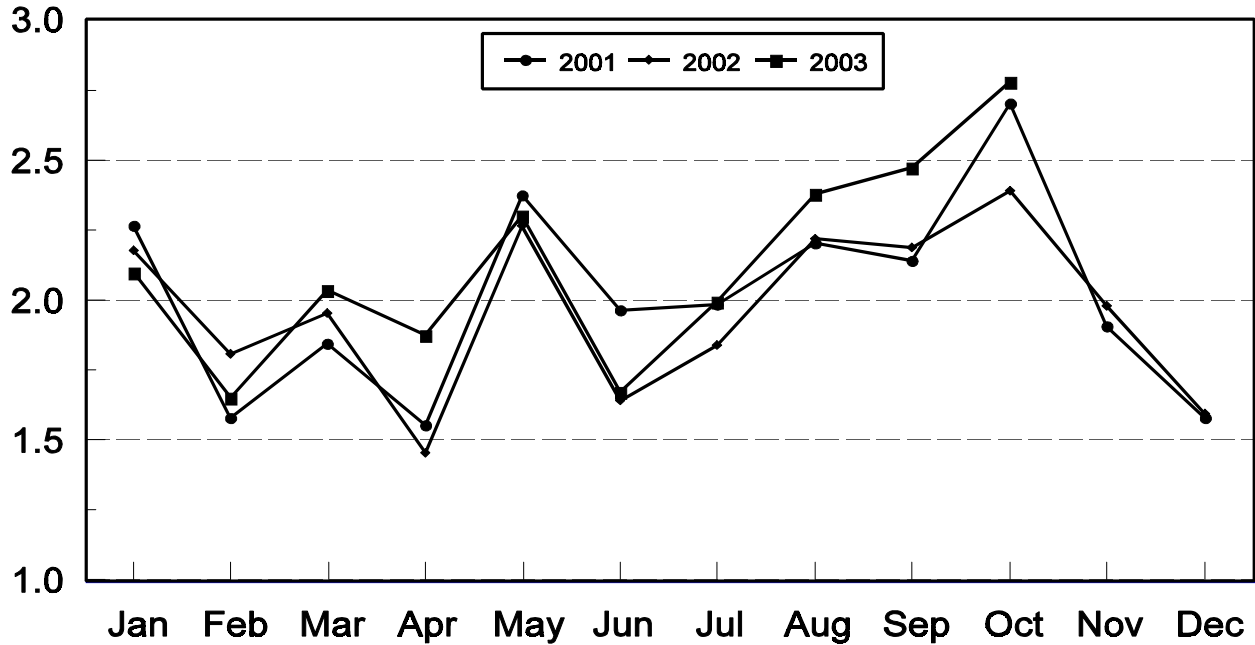
State	During Oct 2002	During Sep 2003	During Oct 2003		
			Number	as % of 2002	as % of Sep
	<i>1,000 Head</i>	<i>1,000 Head</i>	<i>1,000 Head</i>	<i>Percent</i>	<i>Percent</i>
AZ	28	25	26	93	104
CA	60	61	68	113	111
CO	250	255	270	108	106
ID	77	82	88	114	107
IA	95	80	113	119	141
KS	455	530	570	125	108
NE	520	520	640	123	123
NM	22	16	19	86	119
OK	75	81	78	104	96
SD	57	49	68	119	139
TX	600	620	680	113	110
WA	49	53	51	104	96
Oth Sts	101	102	110	109	108
US	2,389	2,474	2,781	116	112

**Cattle on Feed: Number Placed on Feed by Weight Group, 1,000+ Capacity
Feedlots, by Month, State, and United States, 2002-2003**

State	During October									
	Under 600		600-699		700-799		800 Plus		Total	
	2002	2003	2002	2003	2002	2003	2002	2003	2002	2003
	<i>1,000 Head</i>	<i>1,000 Head</i>	<i>1,000 Head</i>	<i>1,000 Head</i>	<i>1,000 Head</i>	<i>1,000 Head</i>	<i>1,000 Head</i>	<i>1,000 Head</i>	<i>1,000 Head</i>	<i>1,000 Head</i>
CO	94	88	49	69	56	54	51	59	250	270
KS	120	185	145	170	120	130	70	85	455	570
NE	200	245	134	187	87	88	99	120	520	640
TX	175	250	200	235	165	145	60	50	600	680
Oth Sts	220	255	110	135	94	91	140	140	564	621
US	809	1,023	638	796	522	508	420	454	2,389	2,781
State	During September									
	Under 600		600-699		700-799		800 Plus		Total	
	2002	2003	2002	2003	2002	2003	2002	2003	2002	2003
	<i>1,000 Head</i>	<i>1,000 Head</i>	<i>1,000 Head</i>	<i>1,000 Head</i>	<i>1,000 Head</i>	<i>1,000 Head</i>	<i>1,000 Head</i>	<i>1,000 Head</i>	<i>1,000 Head</i>	<i>1,000 Head</i>
CO	51	41	53	46	78	78	73	90	255	255
KS	105	135	125	140	140	160	90	95	460	530
NE	133	102	74	95	106	127	137	196	450	520
TX	170	250	155	185	145	130	60	55	530	620
Oth Sts	155	170	80	79	113	115	145	185	493	549
US	614	698	487	545	582	610	505	621	2,188	2,474

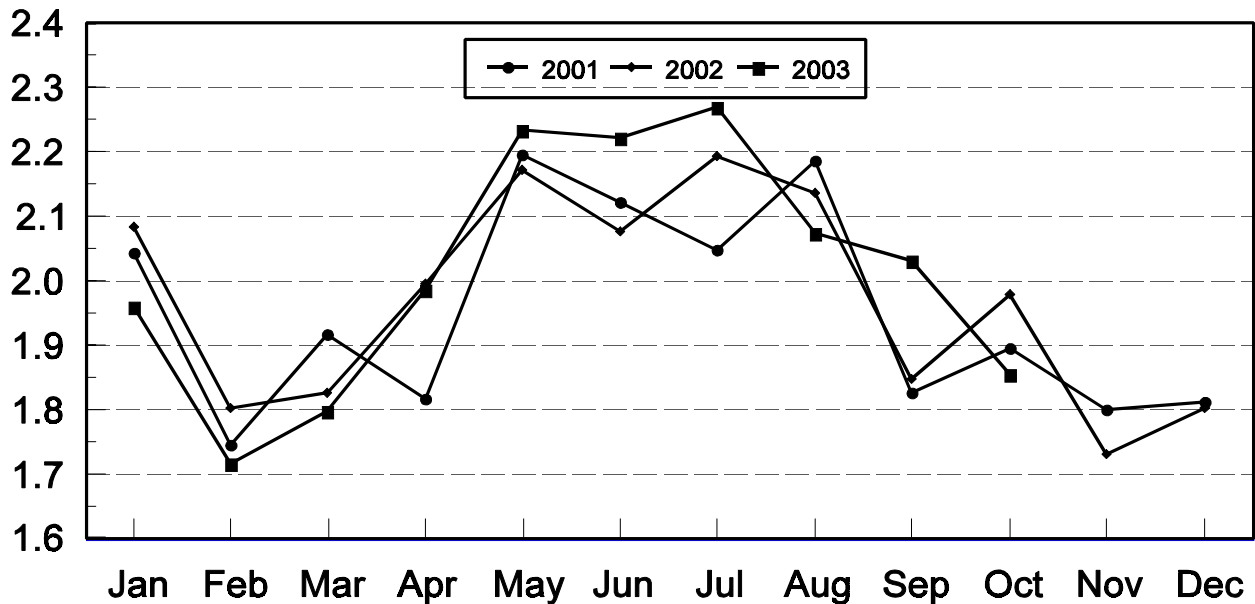
United States Cattle on Feed 1,000+ Capacity Feedlots Number Placed

Million Head



United States Cattle on Feed 1,000+ Capacity Feedlots Number Marketed

Million Head



**Cattle on Feed: Number Marketed, 1,000+ Capacity Feedlots,
by Month, State, and United States 2002-2003**

State	During Oct 2002	During Sep 2003	During Oct 2003		
			Number	as % of 2002	as % of Sep
	<i>1,000 Head</i>	<i>1,000 Head</i>	<i>1,000 Head</i>	<i>Percent</i>	<i>Percent</i>
AZ	25	23	22	88	96
CA	58	63	54	93	86
CO	210	200	160	76	80
ID	61	56	60	98	107
IA	73	69	72	99	104
KS	410	465	410	100	88
NE	360	345	320	89	93
NM	16	10	20	125	200
OK	63	73	74	117	101
SD	36	37	34	94	92
TX	570	580	530	93	91
WA	33	41	45	136	110
Oth Sts	64	70	54	84	77
US	1,979	2,032	1,855	94	91

**Cattle on Feed: Other Disappearance, 1,000+ Capacity Feedlots,
by Month, State, and United States 2002-2003 ¹**

State	During Oct 2002	During Sep 2003	During Oct 2003		
			Number	as % of 2002	as % of Sep
	<i>1,000 Head</i>	<i>1,000 Head</i>	<i>1,000 Head</i>	<i>Percent</i>	<i>Percent</i>
AZ	1	1	1	100	100
CA	7	3	4	57	133
CO	10	5	10	100	200
ID	1	1	3	300	300
IA	2	1	1	50	100
KS	25	15	30	120	200
NE	10	5	10	100	200
NM	2	4	4	200	100
OK	2	3	4	200	133
SD	1	1	2	200	200
TX	20	20	30	150	150
WA	1	2	1	100	50
Oth Sts	2	2	1	50	50
US	84	63	101	120	160

¹ Includes death loss, movement from feedlots to pasture, and shipments to other feedlots for further feeding.

Terms and Definitions of Cattle on Feed Estimates

Cattle on feed are animals being fed a ration of grain, silage, hay and/or protein supplement for slaughter market that are expected to produce a carcass that will grade select or better. It excludes cattle being "backgrounded only" for later sale as feeders or later placement in another feedlot.

Placements are cattle put into a feedlot, fed a ration which will produce a carcass that will grade select or better, and are intended for the slaughter market.

Marketings are cattle shipped out of feedlots to a slaughter market.

Other disappearance includes death loss, movement from feedlots to pasture, and shipments to other feedlots for further feeding.

Reliability of Cattle on Feed Estimates

Survey Procedures: During January and July all known feedlots in the U.S. with capacity of 1,000 or more head are surveyed to provide data for cattle on feed estimates. During the other months, all known feedlots from 17 States are surveyed. The 17 States account for 98 percent of the cattle on feed in feedlots with capacity of 1,000 or more head.

Estimating Procedures: These cattle on feed estimates were prepared by the Agricultural Statistics Board after reviewing recommendations and analysis submitted by each State office. Regional and State survey data were reviewed for reasonableness with each other and with estimates from the previous month when setting the current estimates.

Revision Policy: Revisions to previous estimates are made to improve month to month relationships. Estimates for the previous month are subject to revision in all States each month when current estimates are made. In February, all monthly estimates for the previous year, and the number of feedlots and annual marketings from two years ago are reviewed and subject to revisions. The reviews are primarily based on slaughter data, state check-off or brand data, and any other data that may have been received after the original estimate was made. Estimates will also be reviewed after data from the Census of Agriculture are available. No revisions will be made after that date and estimates become final.

Reliability: Since all 1000+ capacity cattle on feed operators in every State are not included in the monthly survey, survey estimates are subject to sampling variability. Survey results are also subject to non-sampling errors such as omissions, duplications, and mistakes in reporting, recording, and processing the data. The effects of these errors cannot be measured directly. They are minimized through rigid quality controls in the data collection process and through a careful review of all reported data for consistency and reasonableness.

The next "*Cattle on Feed*" report will be released at 3 p.m. ET on December 19, 2003.

The United States Department of Agriculture (USDA) prohibits discrimination in all its programs on the basis of race, color, national origin, gender, religion, age, disability, political beliefs, sexual orientation, and marital or family status. (Not all prohibited bases apply to all programs.) Persons with disabilities who require alternative means for communication of program information (braille, large print, audiotape, etc.) should contact the USDA's TARGET Center at 202-720-2600 (voice and TDD).

To file a complaint of discrimination, write USDA, Director, Office of Civil Rights, Room 326-W, Whitten Building, 1400 Independence Avenue, SW, Washington, D.C., 20250-9410, or call 202-720-5964 (voice or TDD). USDA is an equal opportunity provider and employer.

ACCESS TO REPORTS!!

For your convenience, there are several ways to obtain NASS reports, data products, and services:

INTERNET ACCESS

All NASS reports are available free of charge on the worldwide Internet. For access, connect to the Internet and go to the NASS Home Page at: <http://www.usda.gov/nass/>. Select "Today's Reports" or Publications and then Reports Calendar or Publications and then Search, by Title or Subject.

E-MAIL SUBSCRIPTION

All NASS reports are available by subscription free of charge direct to your e-mail address. Starting with the NASS Home Page at <http://www.usda.gov/nass/>, click on **Publications**, then click on the **Subscribe by E-mail** button which takes you to the page describing e-mail delivery of reports. Finally, click on **Go to the Subscription Page** and follow the instructions.

PRINTED REPORTS OR DATA PRODUCTS

CALL OUR TOLL-FREE ORDER DESK: 800-999-6779 (U.S. and Canada)
Other areas, please call 703-605-6220 FAX: 703-605-6900
(Visa, MasterCard, check, or money order acceptable for payment.)

ASSISTANCE

For **assistance** with general agricultural statistics or further information about NASS or its products or services, contact the **Agricultural Statistics Hotline** at **800-727-9540**, 7:30 a.m. to 4:00 p.m. ET, or e-mail: nass@nass.usda.gov.
