



# Cattle on Feed

---

Released January 16, 2004, by the National Agricultural Statistics Service (NASS), Agricultural Statistics Board, U.S. Department of Agriculture. For information on "Cattle on Feed" call Steve Anderson at (202) 720-3040, office hours 7:30 a.m. to 4:00 p.m. ET.

## U.S. Cattle on Feed Up 6 Percent

**Cattle and calves on feed** for slaughter market in the United States for feedlots with capacity of 1,000 or more head totaled 11.2 million head on January 1, 2004. The inventory was 6 percent above January 1, 2003 but 3 percent below January 1, 2002. The inventory included 6.84 million steers and steer calves, up 5 percent from the previous year. This group accounted for 61 percent of the total inventory. Heifers and heifer calves accounted for 4.33 million head, up 9 percent from January 1, 2003.

**Placements** in feedlots during December totaled 1.75 million, 10 percent above 2002 and 11 percent above 2001. Net placements were 1.66 million. During December, placements of cattle and calves weighing less than 600 pounds were 503,000, 600-699 pounds were 529,000, 700-799 pounds were 448,000, and 800 pounds and greater were 268,000.

**Marketings** of fed cattle during December totaled 1.74 million, 3 percent below 2002 and 4 percent below 2001.

**Other disappearance** totaled 90,000 during December, 9 percent below 2002 and 3 percent below 2001.

**Cattle on Feed: Number on Feed, Placements, Marketings, and  
Other Disappearance, 1,000+ Capacity Feedlots,  
United States, January 1, 2002-2004**

Item	Number			2004 as % of	
	2002	2003	2004	2002	2003
	<i>1,000 Head</i>	<i>1,000 Head</i>	<i>1,000 Head</i>	<i>Percent</i>	<i>Percent</i>
On Feed Dec 1 <sup>1</sup>	11,891	10,898	11,330	95	104
Placed on Feed During Dec	1,578	1,595	1,748	111	110
Fed Cattle Marketed During Dec	1,811	1,801	1,740	96	97
Other Disappearance During Dec <sup>2</sup>	93	99	90	97	91
On Feed Jan 1 <sup>1</sup>	11,565	10,593	11,248	97	106

<sup>1</sup> Cattle and calves on feed are animals for slaughter market being fed a ration of grain or other concentrates and are expected to produce a carcass that will grade select or better.

<sup>2</sup> Includes death loss, movement from feedlots to pasture, and shipments to other feedlots for further feeding.

**Cattle on Feed: Number on Feed, Placements, Marketings, and  
Other Disappearance, 1,000+ Capacity Feedlots,  
United States, December 1, 2001-2003**

Item	Number			2003 as % of	
	2001	2002	2003	2001	2002
	<i>1,000 Head</i>	<i>1,000 Head</i>	<i>1,000 Head</i>	<i>Percent</i>	<i>Percent</i>
On Feed Nov 1 <sup>1</sup>	11,863	10,742	11,038	93	103
Placed on Feed During Nov	1,908	1,977	1,926	101	97
Fed Cattle Marketed During Nov	1,800	1,731	1,537	85	89
Other Disappearance During Nov <sup>2</sup>	80	90	97	121	108
On Feed Dec 1 <sup>1</sup>	11,891	10,898	11,330	95	104

<sup>1</sup> Cattle and calves on feed are animals for slaughter market being fed a ration of grain or other concentrates and are expected to produce a carcass that will grade select or better.

<sup>2</sup> Includes death loss, movement from feedlots to pasture, and shipments to other feedlots for further feeding.

**Cattle on Feed: Number on Feed by Class, 1,000+ Capacity Feedlots,  
United States, January 1, 2002-2004**

Item	Number			2004 as % of	
	2002	2003	2004	2002	2003
	<i>1,000 Head</i>	<i>1,000 Head</i>	<i>1,000 Head</i>	<i>Percent</i>	<i>Percent</i>
Class on Feed Jan 1					
Steers and Steer Calves	7,103	6,537	6,840	96	105
Heifers and Heifer Calves	4,375	3,978	4,330	99	109
Cows and Bulls	87	78	78	90	100

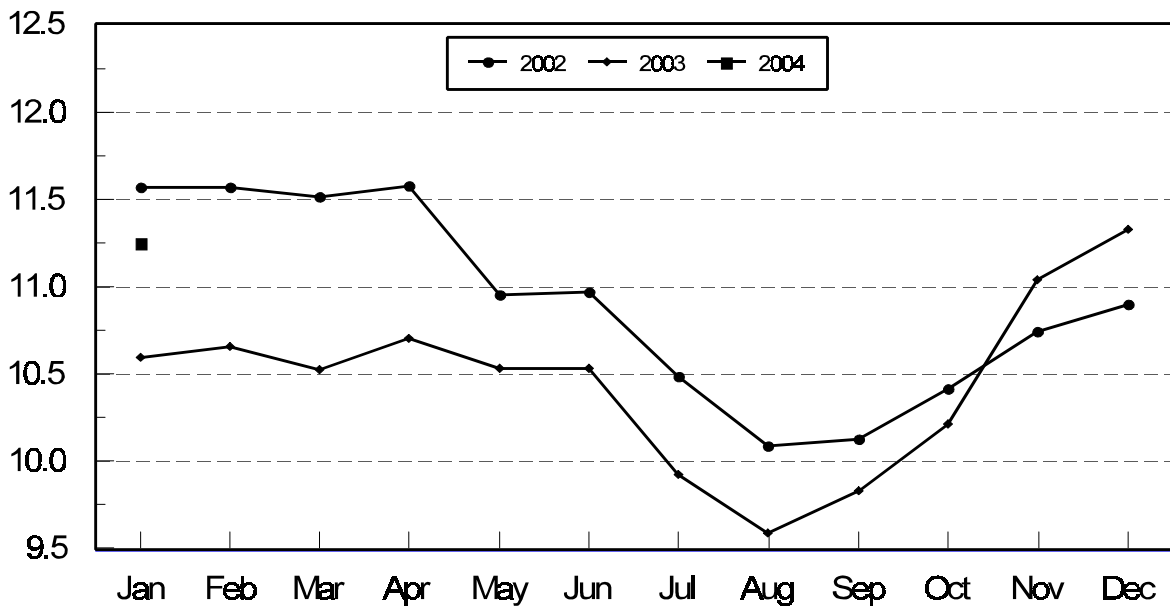
**Cattle on Feed: Number on Feed, 1,000+ Capacity Feedlots,  
by Month, State, and United States 2003-2004 <sup>1</sup>**

State	Jan 1, 2003	Dec 1, 2003	Jan 1, 2004		
			Number	as % of 2003	as % of Dec
	<i>1,000 Head</i>	<i>1,000 Head</i>	<i>1,000 Head</i>	<i>Percent</i>	<i>Percent</i>
AZ	289	284	293	101	103
CA	490	500	510	104	102
CO	1,020	1,060	1,040	102	98
ID	295	310	300	102	97
IA	355	370	370	104	100
KS	2,200	2,480	2,430	110	98
NE	2,140	2,280	2,280	107	100
NM	119	121	115	97	95
OK	330	350	355	108	101
SD	205	200	200	98	100
TX	2,630	2,840	2,830	108	100
WA	185	205	195	105	95
Oth Sts	335	330	330	99	100
US	10,593	11,330	11,248	106	99

<sup>1</sup> Cattle and calves on feed are animals for slaughter market being fed a ration of grain or other concentrates and are expected to produce a carcass that will grade select or better.

**United States Cattle on Feed  
1,000+ Capacity Feedlots**

Million Head



**Cattle on Feed: Number Placed on Feed, 1,000+ Capacity Feedlots,  
by Month, State, and United States 2002-2003**

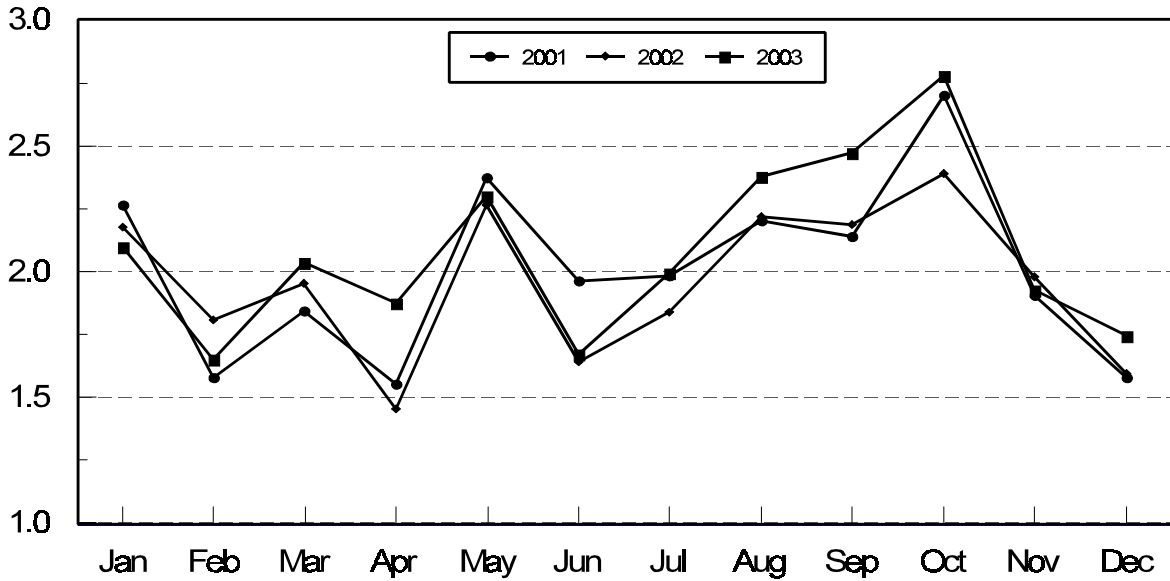
State	During Dec 2002	During Nov 2003	During Dec 2003		
			Number	as % of 2002	as % of Nov
	<i>1,000 Head</i>	<i>1,000 Head</i>	<i>1,000 Head</i>	<i>Percent</i>	<i>Percent</i>
AZ	25	26	32	128	123
CA	55	62	70	127	113
CO	145	185	180	124	97
ID	44	64	53	120	83
IA	65	77	50	77	65
KS	390	425	410	105	96
NE	340	410	350	103	85
NM	12	22	14	117	64
OK	34	56	53	156	95
SD	38	54	31	82	57
TX	360	440	420	117	95
WA	32	46	30	94	65
Oth Sts	55	59	55	100	93
US	1,595	1,926	1,748	110	91

**Cattle on Feed: Number Placed on Feed by Weight Group, 1,000+ Capacity  
Feedlots, by Month, State, and United States, 2002-2003**

State	During December									
	Under 600		600-699		700-799		800 Plus		Total	
	2002	2003	2002	2003	2002	2003	2002	2003	2002	2003
	<i>1,000 Head</i>	<i>1,000 Head</i>	<i>1,000 Head</i>	<i>1,000 Head</i>	<i>1,000 Head</i>	<i>1,000 Head</i>	<i>1,000 Head</i>	<i>1,000 Head</i>	<i>1,000 Head</i>	<i>1,000 Head</i>
CO	33	45	41	50	46	60	25	25	145	180
KS	70	95	155	155	105	110	60	50	390	410
NE	64	68	103	104	102	100	71	78	340	350
TX	134	150	133	140	72	100	21	30	360	420
Oth Sts	120	145	80	80	82	78	78	85	360	388
US	421	503	512	529	407	448	255	268	1,595	1,748
	During November									
	Under 600		600-699		700-799		800 Plus		Total	
	2002	2003	2002	2003	2002	2003	2002	2003	2002	2003
	<i>1,000 Head</i>	<i>1,000 Head</i>	<i>1,000 Head</i>	<i>1,000 Head</i>	<i>1,000 Head</i>	<i>1,000 Head</i>	<i>1,000 Head</i>	<i>1,000 Head</i>	<i>1,000 Head</i>	<i>1,000 Head</i>
CO	58	72	60	45	43	40	29	28	190	185
KS	95	130	155	130	110	110	60	55	420	425
NE	113	128	142	138	70	63	85	81	410	410
TX	141	155	188	150	114	100	27	35	470	440
Oth Sts	182	195	115	115	80	66	110	90	487	466
US	589	680	660	578	417	379	311	289	1,977	1,926

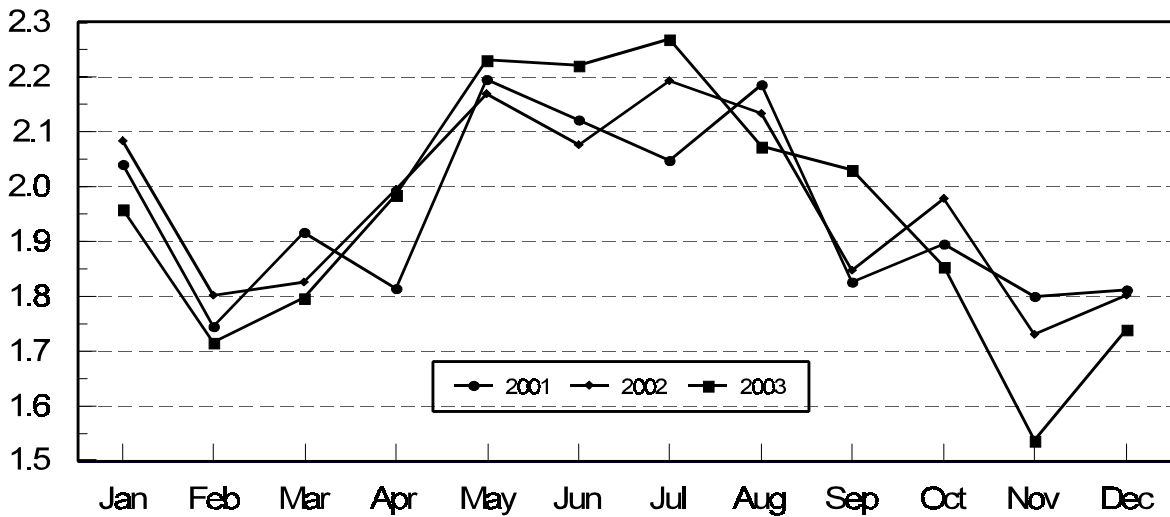
## United States Cattle on Feed 1,000+ Capacity Feedlots Number Placed

Million Head



## United States Cattle on Feed 1,000+ Capacity Feedlots Number Marketed

Million Head



**Cattle on Feed: Number Marketed, 1,000+ Capacity Feedlots,  
by Month, State, and United States 2002-2003**

State	During Dec 2002	During Nov 2003	During Dec 2003		
			Number	as % of 2002	as % of Nov
	<i>1,000 Head</i>	<i>1,000 Head</i>	<i>1,000 Head</i>	<i>Percent</i>	<i>Percent</i>
AZ	27	19	22	81	116
CA	55	52	55	100	106
CO	185	165	190	103	115
ID	47	47	60	128	128
IA	59	56	48	81	86
KS	470	350	435	93	124
NE	370	260	340	92	131
NM	15	17	17	113	100
OK	41	51	45	110	88
SD	27	30	30	111	100
TX	400	410	410	103	100
WA	40	35	38	95	109
Oth Sts	65	45	50	77	111
US	1,801	1,537	1,740	97	113

**Cattle on Feed: Other Disappearance, 1,000+ Capacity Feedlots,  
by Month, State, and United States 2002-2003 <sup>1</sup>**

State	During Dec 2002	During Nov 2003	During Dec 2003		
			Number	as % of 2002	as % of Nov
	<i>1,000 Head</i>	<i>1,000 Head</i>	<i>1,000 Head</i>	<i>Percent</i>	<i>Percent</i>
AZ	4	1	1	25	100
CA	10	5	5	50	100
CO	10	10	10	100	100
ID	2	2	3	150	150
IA	1	1	2	200	200
KS	20	25	25	125	100
NE	10	10	10	100	100
NM	1	2	3	300	150
OK	3	5	3	100	60
SD	1	1	1	100	100
TX	30	30	20	67	67
WA	2	1	2	100	200
Oth Sts	5	4	5	100	125
US	99	97	90	91	93

<sup>1</sup> Includes death loss, movement from feedlots to pasture, and shipments to other feedlots for further feeding.

**Cattle on Feed: Number on Feed by Class, 1,000+ Capacity Feedlots,  
by Quarter, State, and United States, 2003-2004**

State	Steers & Steer Calves			Heifers & Heifer Calves			Cows and Bulls		
	Jan 1, 2003	Oct 1, 2003	Jan 1, 2004	Jan 1, 2003	Oct 1, 2003	Jan 1, 2004	Jan 1, 2003	Oct 1, 2003	Jan 1, 2004
	<i>1,000 Head</i>	<i>1,000 Head</i>	<i>1,000 Head</i>	<i>1,000 Head</i>	<i>1,000 Head</i>	<i>1,000 Head</i>	<i>1,000 Head</i>	<i>1,000 Head</i>	<i>1,000 Head</i>
AZ	281	271	289	8	4	4	0	0	0
CA	450	445	470	40	40	40	0	0	0
CO	585	580	625	425	365	410	10	5	5
ID	196	166	191	97	104	108	2	0	1
IA	240	200	250	114	109	119	1	1	1
KS	1,180	1,220	1,270	1,010	1,060	1,150	10	20	10
NE	1,240	1,010	1,310	870	805	940	30	15	30
NM	56	54	50	63	69	65	0	0	0
OK	215	215	200	114	131	155	1	4	0
SD	104	77	110	83	59	74	18	9	16
TX	1,630	1,700	1,720	999	1,018	1,107	1	2	3
WA	110	110	120	75	77	73	0	3	2
Oth Sts	250	190	235	80	70	85	5	5	10
US	6,537	6,238	6,840	3,978	3,911	4,330	78	64	78

## Terms and Definitions of Cattle on Feed Estimates

**Cattle on feed** are animals being fed a ration of grain, silage, hay and/or protein supplement for slaughter market that are expected to produce a carcass that will grade select or better. It excludes cattle being "backgrounded only" for later sale as feeders or later placement in another feedlot.

**Placements** are cattle put into a feedlot, fed a ration which will produce a carcass that will grade select or better, and are intended for the slaughter market.

**Marketings** are cattle shipped out of feedlots to a slaughter market.

**Other disappearance** includes death loss, movement from feedlots to pasture, and shipments to other feedlots for further feeding.

## Reliability of Cattle on Feed Estimates

**Survey Procedures:** During January and July all known feedlots in the U.S. with capacity of 1,000 or more head are surveyed to provide data for cattle on feed estimates. During the other months, all known feedlots from 17 States are surveyed. The 17 States account for 98 percent of the cattle on feed in feedlots with capacity of 1,000 or more head.

**Estimating Procedures:** These cattle on feed estimates were prepared by the Agricultural Statistics Board after reviewing recommendations and analysis submitted by each State office. Regional and State survey data were reviewed for reasonableness with each other and with estimates from the previous month when setting the current estimates.

**Revision Policy:** Revisions to previous estimates are made to improve month to month relationships. Estimates for the previous month are subject to revision in all States each month when current estimates are made. In February, all monthly estimates for the previous year, and the number of feedlots and annual marketings from two years ago are reviewed and subject to revisions. The reviews are primarily based on slaughter data, state check-off or brand data, and any other data that may have been received after the original estimate was made. Estimates will also be reviewed after data from the Census of Agriculture are available. No revisions will be made after that date and estimates become final.

**Reliability:** Since all 1000+ capacity cattle on feed operators in every State are not included in the monthly survey, survey estimates are subject to sampling variability. Survey results are also subject to non-sampling errors such as omissions, duplications, and mistakes in reporting, recording, and processing the data. The effects of these errors cannot be measured directly. They are minimized through rigid quality controls in the data collection process and through a careful review of all reported data for consistency and reasonableness.



The next "*Cattle on Feed*" report will be released at 3 p.m. ET on February 20, 2004.

The United States Department of Agriculture (USDA) prohibits discrimination in all its programs on the basis of race, color, national origin, gender, religion, age, disability, political beliefs, sexual orientation, and marital or family status. (Not all prohibited bases apply to all programs.) Persons with disabilities who require alternative means for communication of program information (braille, large print, audiotape, etc.) should contact the USDA's TARGET Center at 202-720-2600 (voice and TDD).

To file a complaint of discrimination, write USDA, Director, Office of Civil Rights, Room 326-W, Whitten Building, 1400 Independence Avenue, SW, Washington, D.C., 20250-9410, or call 202-720-5964 (voice or TDD). USDA is an equal opportunity provider and employer.

## ACCESS TO REPORTS!!

---

For your convenience, there are several ways to obtain NASS reports, data products, and services:

### INTERNET ACCESS

All NASS reports are available free of charge on the worldwide Internet. For access, connect to the Internet and go to the NASS Home Page at: [www.usda.gov/nass/](http://www.usda.gov/nass/). Select "Today's Reports" or Publications and then Reports Calendar or Publications and then Search, by Title or Subject.

### E-MAIL SUBSCRIPTION

All NASS reports are available by subscription free of charge direct to your e-mail address. Starting with the NASS Home Page at [www.usda.gov/nass/](http://www.usda.gov/nass/), click on **Publications**, then click on the **Subscribe by E-mail** button which takes you to the page describing e-mail delivery of reports. Finally, click on **Go to the Subscription Page** and follow the instructions.

-----

### PRINTED REPORTS OR DATA PRODUCTS

**CALL OUR TOLL-FREE ORDER DESK: 800-999-6779 (U.S. and Canada)**  
**Other areas, please call 703-605-6220      FAX: 703-605-6900**  
**(Visa, MasterCard, check, or money order acceptable for payment.)**

-----

### ASSISTANCE

For **assistance** with general agricultural statistics or further information about NASS or its products or services, contact the **Agricultural Statistics Hotline** at **800-727-9540**, 7:30 a.m. to 4:00 p.m. ET, or e-mail: [nass@nass.usda.gov](mailto:nass@nass.usda.gov).

---

# Ensuring a Healthy Food Supply



**February 19-20, 2004**  
**Crystal Gateway**  
**Marriott Hotel**  
**Arlington, Virginia**

Shoppers demand affordable food that's safe, healthy and right for their family's diet. Foreign consumers, too, have high standards for American-grown foods. Meeting their expectations poses challenges for farmers and ranchers, the food industry and government.

At Agricultural Outlook Forum 2004, you will hear about the latest developments in food safety, health concerns and innovative products. The program also features in-depth analysis of 2004 commodity planting, trade and market prospects. And you will receive new 10-year commodity projections from USDA.

Networking opportunities abound at this popular event. Register online today. For program updates, send your name and e-mail address to [agforum@oce.usda.gov](mailto:agforum@oce.usda.gov).

[www.usda.gov/oce](http://www.usda.gov/oce)    [agforum@oce.usda.gov](mailto:agforum@oce.usda.gov)    (877) 891-2208 toll free