



Cattle on Feed

Released February 20, 2004, by the National Agricultural Statistics Service (NASS), Agricultural Statistics Board, U.S. Department of Agriculture. For information on "Cattle on Feed" call Steve Anderson at (202) 720-3040, office hours 7:30 a.m. to 4:00 p.m. ET.

U.S. Cattle on Feed Up 4 Percent

Cattle and calves on feed for slaughter market in the United States for feedlots with capacity of 1,000 or more head totaled 11.1 million head on February 1, 2004. The inventory was 4 percent above February 1, 2003 but 4 percent below February 1, 2002.

Placements in feedlots during January totaled 1.75 million, 16 percent below 2003 and 20 percent below 2002. Net placements were 1.65 million. During January, placements of cattle and calves weighing less than 600 pounds were 362,000, 600-699 pounds were 466,000, 700-799 pounds were 576,000, and 800 pounds and greater were 342,000.

Marketings of fed cattle during January totaled 1.78 million, down 10 percent from 2003 and down 14 percent from 2002.

Other disappearance totaled 94,000 during January, 25 percent above 2003 and 6 percent above 2002.

2003 Cattle on Feed and Annual Size Group Estimates

This report contains the 2003 monthly cattle on feed estimates for feedlots with capacity of 1,000 or more head. Also included are the number of feedlots, inventory, and annual marketings by size group for 2002 and 2003. Data for total U.S. capacity of 1,000 or more head feedlots are also published in this issue. These data are measured by the number of head.

Cattle and calves on feed for slaughter market in the United States for feedlots with capacity of 1,000 or more head represented 81.5 percent of all cattle and calves on feed in the United States on January 1, 2004, up from 80.6 percent on January 1, 2003.

Marketings of fed cattle for feedlots with capacity of 1,000 or more head during 2003 represented 85.1 percent all cattle marketed from feedlots in the United States, down from 85.3 percent during 2002.

Revisions

Total Cattle on Feed inventory estimates for January 1, 2003 were revised upward by 2% based on feedlots which were added to the survey program due to the 2002 Census of Agriculture. These additional feedlots increased the estimate of inventory on greater than 1,000 head capacity feedlots by less than 1%.

Special Note

Preliminary 2002 Census data were used in the review process for the 2004 and revised 2003 estimates included in this publication. States requiring 5-year historical revisions may carry a disjointed data series from their current historical data series. January 1, 2003 and prior estimates contained in this publication will be republished in the *Cattle, Final Estimates, 1999-2003* publication which is scheduled for release on April 30, 2004.

**Cattle on Feed: Number on Feed, Placements, Marketings, and
Other Disappearance, 1,000+ Capacity Feedlots,
United States, February 1, 2002-2004**

Item	Number			2004 as % of	
	2002	2003	2004	2002	2003
	<i>1,000 Head</i>	<i>1,000 Head</i>	<i>1,000 Head</i>	<i>Percent</i>	<i>Percent</i>
On Feed Jan 1 ¹	11,565	*10,658	*11,253	97	106
Placed on Feed During Jan	2,179	*2,089	1,746	80	84
Fed Cattle Marketed During Jan	2,083	*1,972	1,782	86	90
Other Disappearance During Jan ²	89	75	94	106	125
On Feed Feb 1 ¹	11,572	*10,700	11,123	96	104

* Revised.

¹ Cattle and calves on feed are animals for slaughter market being fed a ration of grain or other concentrates and are expected to produce a carcass that will grade select or better.

² Includes death loss, movement from feedlots to pasture, and shipments to other feedlots for further feeding.

**Cattle on Feed: Number on Feed, Placements, Marketings, and
Other Disappearance, 1,000+ Capacity Feedlots,
United States, January 1, 2002-2004**

Item	Number			2004 as % of	
	2002	2003	2004	2002	2003
	<i>1,000 Head</i>	<i>1,000 Head</i>	<i>1,000 Head</i>	<i>Percent</i>	<i>Percent</i>
On Feed Dec 1 ¹	11,891	10,898	*11,335	95	104
Placed on Feed During Dec	1,578	*1,658	1,748	111	105
Fed Cattle Marketed During Dec	1,811	*1,799	1,740	96	97
Other Disappearance During Dec ²	93	99	90	97	91
On Feed Jan 1 ¹	11,565	*10,658	*11,253	97	106

* Revised.

¹ Cattle and calves on feed are animals for slaughter market being fed a ration of grain or other concentrates and are expected to produce a carcass that will grade select or better.

² Includes death loss, movement from feedlots to pasture, and shipments to other feedlots for further feeding.

**Cattle on Feed: Number on Feed by Class, 1,000+ Capacity Feedlots,
United States, January 1, 2002-2004**

Item	Number			2004 as % of	
	2002	2003	2004	2002	2003
	<i>1,000 Head</i>	<i>1,000 Head</i>	<i>1,000 Head</i>	<i>Percent</i>	<i>Percent</i>
Class on Feed Jan 1					
Steers and Steer Calves	7,103	*6,580	*6,845	96	104
Heifers and Heifer Calves	4,375	*3,999	4,330	99	108
Cows and Bulls	87	*79	78	90	99

* Revised.

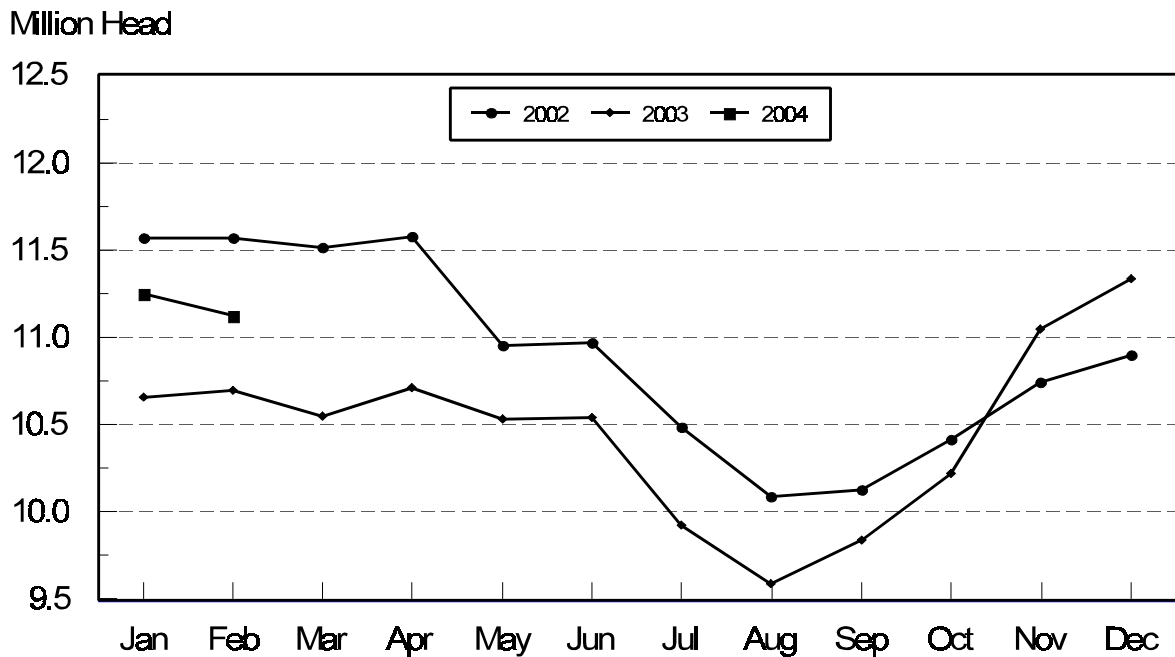
**Cattle on Feed: Number on Feed, 1,000+ Capacity Feedlots,
by Month, State, and United States 2003-2004 ¹**

State	Feb 1, 2003	Jan 1, 2004	Feb 1, 2004		
			Number	as % of 2003	as % of Jan
	<i>1,000 Head</i>	<i>1,000 Head</i>	<i>1,000 Head</i>	<i>Percent</i>	<i>Percent</i>
AZ	291	293	296	102	101
CA	*480	510	500	104	98
CO	1,030	1,040	1,040	101	100
ID	*290	300	275	95	92
IA	*390	370	380	97	103
KS	2,220	2,430	2,420	109	100
NE	2,220	2,280	2,280	103	100
NM	114	115	117	103	102
OK	330	355	350	106	99
SD	215	200	200	93	100
TX	2,600	2,830	2,770	107	98
WA	180	*200	185	103	93
Oth Sts	340	330	310	91	94
US	*10,700	*11,253	11,123	104	99

* Revised.

¹ Cattle and calves on feed are animals for slaughter market being fed a ration of grain or other concentrates and are expected to produce a carcass that will grade select or better.

**United States Cattle on Feed
1,000+ Capacity Feedlots**



**Cattle on Feed: Number Placed on Feed, 1,000+ Capacity Feedlots,
by Month, State, and United States 2003-2004**

State	During Jan 2003	During Dec 2003	During Jan 2004		
			Number	as % of 2003	as % of Dec
	<i>1,000 Head</i>	<i>1,000 Head</i>	<i>1,000 Head</i>	<i>Percent</i>	<i>Percent</i>
AZ	29	32	32	110	100
CA	58	70	55	95	79
CO	225	180	165	73	92
ID	56	53	41	73	77
IA	69	50	59	86	118
KS	540	410	455	84	111
NE	480	350	380	79	109
NM	9	14	17	189	121
OK	*46	53	50	109	94
SD	*46	31	30	65	97
TX	420	420	390	93	93
WA	36	30	26	72	87
Oth Sts	75	55	46	61	84
US	*2,089	1,748	1,746	84	100

* Revised.

**Cattle on Feed: Number Placed on Feed by Weight Group, 1,000+ Capacity
Feedlots, by Month, State, and United States, 2002-2004**

State	During January									
	Under 600		600-699		700-799		800 Plus		Total	
	2003	2004	2003	2004	2003	2004	2003	2004	2003	2004
	<i>1,000 Head</i>	<i>1,000 Head</i>	<i>1,000 Head</i>	<i>1,000 Head</i>	<i>1,000 Head</i>	<i>1,000 Head</i>	<i>1,000 Head</i>	<i>1,000 Head</i>	<i>1,000 Head</i>	<i>1,000 Head</i>
CO	43	25	49	45	95	61	38	34	225	165
KS	65	60	185	140	200	175	90	80	540	455
NE	70	47	135	95	161	140	114	98	480	380
TX	126	110	122	120	126	115	46	45	420	390
Oth Sts	*120	120	*84	66	110	85	*110	85	*424	356
US	*424	362	*575	466	692	576	*398	342	*2,089	1,746
	During December									
	Under 600		600-699		700-799		800 Plus		Total	
	2002	2003	2002	2003	2002	2003	2002	2003	2002	2003
	<i>1,000 Head</i>	<i>1,000 Head</i>	<i>1,000 Head</i>	<i>1,000 Head</i>	<i>1,000 Head</i>	<i>1,000 Head</i>	<i>1,000 Head</i>	<i>1,000 Head</i>	<i>1,000 Head</i>	<i>1,000 Head</i>
CO	33	45	41	50	46	60	25	25	145	180
KS	70	95	155	155	105	110	60	50	390	410
NE	64	68	103	104	102	100	71	78	340	350
TX	134	150	133	140	72	100	21	30	360	420
Oth Sts	*160	145	*100	80	*83	78	*80	85	*423	388
US	*461	503	*532	529	*408	448	*257	268	*1,658	1,748

* Revised.

**Cattle on Feed: Number Marketed, 1,000+ Capacity Feedlots,
by Month, State, and United States 2003-2004**

State	During Jan 2003	During Dec 2003	During Jan 2004		
			Number	as % of 2003	as % of Dec
	<i>1,000 Head</i>	<i>1,000 Head</i>	<i>1,000 Head</i>	<i>Percent</i>	<i>Percent</i>
AZ	24	22	26	108	118
CA	67	55	60	90	109
CO	205	190	160	78	84
ID	65	60	64	98	107
IA	*72	48	47	65	98
KS	500	435	440	88	101
NE	390	340	360	92	106
NM	13	17	13	100	76
OK	49	45	53	108	118
SD	*45	30	29	64	97
TX	435	410	430	99	105
WA	39	38	40	103	105
Oth Sts	68	50	60	88	120
US	*1,972	1,740	1,782	90	102

* Revised.

**Cattle on Feed: Other Disappearance, 1,000+ Capacity Feedlots,
by Month, State, and United States 2003-2004 ¹**

State	During Jan 2003	During Dec 2003	During Jan 2004		
			Number	as % of 2003	as % of Dec
	<i>1,000 Head</i>	<i>1,000 Head</i>	<i>1,000 Head</i>	<i>Percent</i>	<i>Percent</i>
AZ	3	1	3	100	300
CA	6	5	5	83	100
CO	10	10	5	50	50
ID	1	3	2	200	67
IA	2	2	2	100	100
KS	20	25	25	125	100
NE	10	10	20	200	200
NM	1	3	2	200	67
OK	2	3	2	100	67
SD	1	1	1	100	100
TX	15	20	20	133	100
WA	2	2	1	50	50
Oth Sts	2	5	6	300	120
US	75	90	94	125	104

¹ Includes death loss, movement from feedlots to pasture, and shipments to other feedlots for further feeding.

**Cattle on Feed: Number on Feed, 1,000+ Capacity Feedlots,
by Month, State, and United States, 2003¹**

State	Jan 1	Feb 1	Mar 1	Apr 1	May 1	Jun 1
	<i>1,000 Head</i>	<i>1,000 Head</i>	<i>1,000 Head</i>	<i>1,000 Head</i>	<i>1,000 Head</i>	<i>1,000 Head</i>
AZ	289	291	279	278	269	266
CA	*495	*480	*475	*475	470	485
CO	1,020	1,030	990	970	1,000	990
ID	*300	*290	280	280	275	260
IA	*395	*390	*380	*375	*370	*345
KS	2,200	2,220	2,240	2,320	2,270	2,270
NE	2,140	2,220	2,190	2,190	2,080	1,930
NM	119	114	112	105	101	110
OK	*335	330	320	340	330	360
SD	*215	215	215	*210	*210	198
TX	2,630	2,600	2,560	2,670	2,680	2,880
WA	185	180	180	180	170	160
Oth Sts	335	340	325	320	310	285
US	*10,658	*10,700	*10,546	*10,713	*10,535	*10,539
	Jul 1	Aug 1	Sep 1	Oct 1	Nov 1	Dec 1
	<i>1,000 Head</i>	<i>1,000 Head</i>	<i>1,000 Head</i>	<i>1,000 Head</i>	<i>1,000 Head</i>	<i>1,000 Head</i>
AZ	266	271	274	275	278	284
CA	490	485	490	485	495	500
CO	890	860	900	950	1,050	1,060
ID	255	240	245	270	295	310
IA	310	295	300	310	350	370
KS	2,160	2,180	2,250	2,300	2,430	2,480
NE	1,690	1,570	1,660	1,830	2,140	2,280
NM	115	116	121	123	118	121
OK	350	335	345	350	350	350
SD	167	148	134	145	177	200
TX	2,820	2,690	2,700	2,720	2,840	2,840
WA	160	170	*185	*195	*200	*210
Oth Sts	250	230	235	265	320	330
US	9,923	9,590	*9,839	*10,218	*11,043	*11,335

* Revised.

¹ Cattle and calves on feed are animals for slaughter market being fed a ration of grain or other concentrates and are expected to produce a carcass that will grade select or better.

**Cattle on Feed: Number Placed on Feed, 1,000+ Capacity Feedlots,
by Month, State, and United States, 2002-2003**

State	During					
	Dec	Jan	Feb	Mar	Apr	May
	<i>1,000 Head</i>	<i>1,000 Head</i>	<i>1,000 Head</i>	<i>1,000 Head</i>	<i>1,000 Head</i>	<i>1,000 Head</i>
AZ	25	29	22	31	32	38
CA	*60	58	54	62	*61	83
CO	145	225	160	160	200	205
ID	*47	56	*48	58	45	53
IA	*105	69	63	56	57	48
KS	390	540	410	510	420	550
NE	340	480	330	320	320	360
NM	12	9	11	16	21	30
OK	*39	*46	46	94	68	98
SD	*48	*46	40	*39	31	*34
TX	360	420	370	600	540	730
WA	32	36	31	31	25	30
Oth Sts	55	75	65	55	50	48
US	*1,658	*2,089	*1,650	*2,032	*1,870	*2,307
	During					
	Jun	Jul	Aug	Sep	Oct	Nov
	<i>1,000 Head</i>	<i>1,000 Head</i>	<i>1,000 Head</i>	<i>1,000 Head</i>	<i>1,000 Head</i>	<i>1,000 Head</i>
AZ	34	32	28	25	26	26
CA	73	66	65	61	68	62
CO	125	175	240	255	270	185
ID	63	56	58	82	88	64
IA	34	56	79	80	113	77
KS	415	570	580	530	570	425
NE	270	350	470	520	640	410
NM	21	21	23	16	19	22
OK	52	75	84	81	78	56
SD	27	21	30	49	68	54
TX	470	475	610	620	680	440
WA	39	50	*51	53	51	46
Oth Sts	49	50	66	102	110	59
US	1,672	1,997	*2,384	2,474	2,781	1,926

* Revised.

**Cattle on Feed: Number Placed on Feed by Weight Group, 1,000+ Capacity
Feedlots, by Month, State, and United States, 2002-2003**

State	During December				
	Under 600	600-699	700-799	800 Plus	Total
	<i>1,000 Head</i>	<i>1,000 Head</i>	<i>1,000 Head</i>	<i>1,000 Head</i>	<i>1,000 Head</i>
CO	33	41	46	25	145
KS	70	155	105	60	390
NE	64	103	102	71	340
TX	134	133	72	21	360
Oth Sts	*160	*100	*83	*80	*423
US	*461	*532	*408	*257	*1,658
	During January				
	Under 600	600-699	700-799	800 Plus	Total
	<i>1,000 Head</i>	<i>1,000 Head</i>	<i>1,000 Head</i>	<i>1,000 Head</i>	<i>1,000 Head</i>
CO	43	49	95	38	225
KS	65	185	200	90	540
NE	70	135	161	114	480
TX	126	122	126	46	420
Oth Sts	*120	*84	110	*110	*424
US	*424	*575	692	*398	*2,089
	During February				
	Under 600	600-699	700-799	800 Plus	Total
	<i>1,000 Head</i>	<i>1,000 Head</i>	<i>1,000 Head</i>	<i>1,000 Head</i>	<i>1,000 Head</i>
CO	15	37	67	41	160
KS	35	105	165	105	410
NE	40	69	124	97	330
TX	70	100	137	63	370
Oth Sts	100	*60	100	120	*380
US	260	*371	593	426	*1,650

See footnote(s) at end of table.

--continued

**Cattle on Feed: Number Placed on Feed by Weight Group, 1,000+ Capacity
Feedlots, by Month, State, and United States, 2002-2003 (continued)**

State	During March				
	Under 600	600-699	700-799	800 Plus	Total
	<i>1,000 Head</i>	<i>1,000 Head</i>	<i>1,000 Head</i>	<i>1,000 Head</i>	<i>1,000 Head</i>
CO	15	26	61	58	160
KS	45	105	200	160	510
NE	22	55	113	130	320
TX	78	128	248	146	600
Oth Sts	*110	75	120	137	*442
US	*270	389	742	631	*2,032
	During April				
	Under 600	600-699	700-799	800 Plus	Total
	<i>1,000 Head</i>	<i>1,000 Head</i>	<i>1,000 Head</i>	<i>1,000 Head</i>	<i>1,000 Head</i>
CO	17	36	72	75	200
KS	50	85	145	140	420
NE	39	53	99	129	320
TX	80	90	192	178	540
Oth Sts	*110	60	105	115	*390
US	*296	324	613	637	*1,870
	During May				
	Under 600	600-699	700-799	800 Plus	Total
	<i>1,000 Head</i>	<i>1,000 Head</i>	<i>1,000 Head</i>	<i>1,000 Head</i>	<i>1,000 Head</i>
CO	25	32	78	70	205
KS	60	85	205	200	550
NE	38	43	131	148	360
TX	150	150	225	205	730
Oth Sts	135	57	110	*160	*462
US	408	367	749	*783	*2,307

See footnote(s) at end of table.

--continued

**Cattle on Feed: Number Placed on Feed by Weight Group, 1,000+ Capacity
Feedlots, by Month, State, and United States, 2002-2003 (continued)**

State	During June				
	Under 600	600-699	700-799	800 Plus	Total
	<i>1,000 Head</i>	<i>1,000 Head</i>	<i>1,000 Head</i>	<i>1,000 Head</i>	<i>1,000 Head</i>
CO	24	36	35	30	125
KS	80	95	135	105	415
NE	33	50	75	112	270
TX	120	120	145	85	470
Oth Sts	115	57	90	130	392
US	372	358	480	462	1,672
	During July				
	Under 600	600-699	700-799	800 Plus	Total
	<i>1,000 Head</i>	<i>1,000 Head</i>	<i>1,000 Head</i>	<i>1,000 Head</i>	<i>1,000 Head</i>
CO	24	41	53	57	175
KS	85	125	210	150	570
NE	37	76	105	132	350
TX	155	115	125	80	475
Oth Sts	125	57	100	145	427
US	426	414	593	564	1,997
	During August				
	Under 600	600-699	700-799	800 Plus	Total
	<i>1,000 Head</i>	<i>1,000 Head</i>	<i>1,000 Head</i>	<i>1,000 Head</i>	<i>1,000 Head</i>
CO	43	55	63	79	240
KS	120	150	205	105	580
NE	74	80	141	175	470
TX	220	170	150	70	610
Oth Sts	*145	74	100	165	*484
US	*602	529	659	594	*2,384

See footnote(s) at end of table.

--continued

**Cattle on Feed: Number Placed on Feed by Weight Group, 1,000+ Capacity
Feedlots, by Month, State, and United States, 2002-2003 (continued)**

State	During September				
	Under 600	600-699	700-799	800 Plus	Total
	<i>1,000 Head</i>	<i>1,000 Head</i>	<i>1,000 Head</i>	<i>1,000 Head</i>	<i>1,000 Head</i>
CO	41	46	78	90	255
KS	135	140	160	95	530
NE	102	95	127	196	520
TX	250	185	130	55	620
Oth Sts	170	79	115	185	549
US	698	545	610	621	2,474
	During October				
	Under 600	600-699	700-799	800 Plus	Total
	<i>1,000 Head</i>	<i>1,000 Head</i>	<i>1,000 Head</i>	<i>1,000 Head</i>	<i>1,000 Head</i>
CO	88	69	54	59	270
KS	185	170	130	85	570
NE	245	187	88	120	640
TX	250	235	145	50	680
Oth Sts	255	135	91	140	621
US	1,023	796	508	454	2,781
	During November				
	Under 600	600-699	700-799	800 Plus	Total
	<i>1,000 Head</i>	<i>1,000 Head</i>	<i>1,000 Head</i>	<i>1,000 Head</i>	<i>1,000 Head</i>
CO	72	45	40	28	185
KS	130	130	110	55	425
NE	128	138	63	81	410
TX	155	150	100	35	440
Oth Sts	195	115	66	90	466
US	680	578	379	289	1,926

* Revised.

**Cattle on Feed: Number Marketed, 1,000+ Capacity Feedlots,
by Month, State, and United States, 2002-2003**

State	During					
	Dec	Jan	Feb	Mar	Apr	May
	<i>1,000 Head</i>	<i>1,000 Head</i>	<i>1,000 Head</i>	<i>1,000 Head</i>	<i>1,000 Head</i>	<i>1,000 Head</i>
AZ	27	24	31	29	40	39
CA	55	67	56	58	63	66
CO	185	205	190	175	165	205
ID	*45	65	*57	57	49	67
IA	59	*72	*71	*60	60	*70
KS	470	500	370	410	450	530
NE	370	390	350	310	420	500
NM	15	13	12	22	24	20
OK	41	49	55	71	75	67
SD	27	*45	39	43	29	44
TX	400	435	395	480	520	520
WA	40	39	30	30	34	39
Oth Sts	65	68	77	58	56	71
US	*1,799	*1,972	*1,733	*1,803	1,985	*2,238
	During					
	Jun	Jul	Aug	Sep	Oct	Nov
	<i>1,000 Head</i>	<i>1,000 Head</i>	<i>1,000 Head</i>	<i>1,000 Head</i>	<i>1,000 Head</i>	<i>1,000 Head</i>
AZ	32	26	23	23	22	19
CA	63	67	57	63	54	52
CO	220	200	195	200	160	165
ID	67	70	52	56	60	47
IA	*68	70	73	69	72	56
KS	510	540	500	465	410	350
NE	500	460	370	345	320	260
NM	13	17	15	10	20	17
OK	59	85	72	73	74	51
SD	55	38	43	37	34	30
TX	520	590	580	580	530	410
WA	38	39	35	41	45	35
Oth Sts	82	68	60	70	54	45
US	*2,227	2,270	2,075	2,032	1,855	1,537

* Revised.

**Cattle on Feed: Other Disappearance, 1,000+ Capacity Feedlots,
by Month, State, and United States, 2002-2003 ¹**

State	During					
	Dec	Jan	Feb	Mar	Apr	May
	<i>1,000 Head</i>	<i>1,000 Head</i>	<i>1,000 Head</i>	<i>1,000 Head</i>	<i>1,000 Head</i>	<i>1,000 Head</i>
AZ	4	3	3	3	1	2
CA	10	6	3	4	3	2
CO	10	10	10	5	5	10
ID	2	1	1	1	1	1
IA	1	2	2	1	2	3
KS	20	20	20	20	20	20
NE	10	10	10	10	10	10
NM	1	1	1	1	1	1
OK	3	2	1	3	3	1
SD	1	1	1	1	2	2
TX	30	15	15	10	10	10
WA	2	2	1	1	1	1
Oth Sts	5	2	3	2	4	2
US	99	75	71	62	63	65
	During					
	Jun	Jul	Aug	Sep	Oct	Nov
	<i>1,000 Head</i>	<i>1,000 Head</i>	<i>1,000 Head</i>	<i>1,000 Head</i>	<i>1,000 Head</i>	<i>1,000 Head</i>
AZ	2	1	2	1	1	1
CA	5	4	3	3	4	5
CO	5	5	5	5	10	10
ID	1	1	1	1	3	2
IA	1	1	1	1	1	1
KS	15	10	10	15	30	25
NE	10	10	10	5	10	10
NM	3	3	3	4	4	2
OK	3	5	2	3	4	5
SD	3	2	1	1	2	1
TX	10	15	20	20	30	30
WA	1	1	1	2	1	1
Oth Sts	2	2	1	2	1	4
US	61	60	60	63	101	97

¹ Includes death loss, movement from feedlots to pasture, and shipments to other feedlots for further feeding.

**Cattle on Feed: Number on Feed by Class, 1,000+ Capacity Feedlots,
by Quarter, State, and United States, 2003**

State	Steers & Steer Calves				Heifers & Heifer Calves			
	Jan 1	Apr 1	Jul 1	Oct 1	Jan 1	Apr 1	Jul 1	Oct 1
	<i>1,000 Head</i>	<i>1,000 Head</i>	<i>1,000 Head</i>	<i>1,000 Head</i>	<i>1,000 Head</i>	<i>1,000 Head</i>	<i>1,000 Head</i>	<i>1,000 Head</i>
AZ	281	274	262	271	8	4	4	4
CA	*455	*445	450	445	40	30	40	40
CO	585	590	510	580	425	375	375	365
ID	*199	179	166	166	*99	100	88	104
IA	*265	*240	200	200	*129	*134	109	109
KS	1,180	1,270	1,150	1,220	1,010	1,030	995	1,060
NE	1,240	1,305	950	1,010	870	860	725	805
NM	56	52	58	54	63	53	57	69
OK	*220	220	220	215	114	118	129	131
SD	*109	*107	80	77	*87	*95	71	59
TX	1,630	1,710	1,770	1,700	999	955	1,048	1,018
WA	110	100	100	*115	75	80	60	77
Oth Sts	250	230	195	190	80	87	50	70
US	*6,580	*6,722	6,111	*6,243	*3,999	*3,921	3,751	3,911
Cows and Bulls								
	Jan 1	Apr 1	Jul 1	Oct 1				
	<i>1,000 Head</i>	<i>1,000 Head</i>	<i>1,000 Head</i>	<i>1,000 Head</i>				
AZ	0	0	0	0				
CA	0	0	0	0				
CO	10	5	5	5				
ID	2	1	1	0				
IA	1	1	1	1				
KS	10	20	15	20				
NE	30	25	15	15				
NM	0	0	0	0				
OK	1	2	1	4				
SD	*19	8	16	9				
TX	1	5	2	2				
WA	0	0	0	3				
Oth Sts	5	3	5	5				
US	*79	70	61	64				

* Revised.

**Cattle on Feed: Number of Feedlots, Inventory, and Marketings,
by Size of Feedlot, State, and United States 2002-2003 ¹**

Year and State	Feedlot Capacity in Number of Head					
	1,000 - 1,999			2,000 - 3,999		
	Lots	Inventory	Cattle Marketed	Lots	Inventory	Cattle Marketed
	<i>Number</i>	<i>1,000 Head</i>	<i>1,000 Head</i>	<i>Number</i>	<i>1,000 Head</i>	<i>1,000 Head</i>
2002						
AZ						
CA	² 3	² 4	² 6			
CO	43	16	45	36	35	70
ID	11	*4	11	12	*16	*32
IA	*233	*151	260	90	*159	267
KS	33	20	40	47	50	120
NE	280	150	310	221	300	570
NM						
OK	² 3	² 3	² 7			
SD	*71	*45	90	*48	*68	120
TX	6	3	10	5	5	15
WA	² 10	² 27	² 27			
Oth Sts	185	65	130	79	70	150
US	*868	*457	899	*544	*711	*1,360
2003						
AZ						
CA	² 3	² 5	² 6			
CO	42	24	35	40	39	60
ID	10	6	8	12	18	31
IA	215	140	283	93	140	280
KS	34	20	40	42	35	100
NE	305	165	310	220	330	610
NM						
OK	² 3	² 3	² 5			
SD	73	34	95	53	58	146
TX	8	5	10	4	6	15
WA	² 10	² 26	² 34			
Oth Sts	160	70	140	83	70	150
US	852	467	925	552	704	1,403

See footnote(s) at end of table.

--continued

**Cattle on Feed: Number of Feedlots, Inventory, and Marketings, by
Size of Feedlot, State, and United States 2002-2003 ¹ (continued)**

Year and State	Feedlot Capacity in Number of Head					
	4,000 - 7,999			8,000 - 15,999		
	Lots	Inventory	Cattle Marketed	Lots	Inventory	Cattle Marketed
	<i>Number</i>	<i>1,000 Head</i>	<i>1,000 Head</i>	<i>Number</i>	<i>1,000 Head</i>	<i>1,000 Head</i>
2002						
AZ	2	5	7			
CA	² 9	² *20	² 22			
CO	33	97	195	20	109	245
ID	10	*20	*39	² 17	² 260	² 644
IA	² 27	² 85	² 185			
KS	45	120	275	36	280	700
NE	134	425	920	64	465	1,070
NM	² 6	² 19	² 33			
OK	8	20	54	5	*20	42
SD	20	52	108	² 7	² 50	² 104
TX	15	32	85	26	175	390
WA				² 6	² 69	² 156
Oth Sts	40	80	185	12	45	110
US	344	*961	*2,050	191	*1,223	2,832
2003						
AZ						
CA	² 7	² 26	² 35			
CO	37	100	165	21	142	235
ID	10	26	50	² 18	² 250	² 618
IA	² 32	² 90	² 226			
KS	49	140	245	39	320	660
NE	130	375	800	62	540	1,090
NM	² 4	² 12	² 30			
OK	8	28	57	4	27	61
SD	17	43	87	² 9	² 65	² 139
TX	13	34	75	27	215	420
WA				² 6	² 69	² 165
Oth Sts	41	85	210	12	51	130
US	347	944	1,915	195	1,442	2,958

See footnote(s) at end of table.

--continued

**Cattle on Feed: Number of Feedlots, Inventory, and Marketings, by
Size of Feedlot, State, and United States 2002-2003 ¹ (continued)**

Year and State	Feedlot Capacity in Number of Head					
	16,000 - 31,999			32,000 and Over		
	Lots	Inventory	Cattle Marketed	Lots	Inventory	Cattle Marketed
	<i>Number</i>	<i>1,000 Head</i>	<i>1,000 Head</i>	<i>Number</i>	<i>1,000 Head</i>	<i>1,000 Head</i>
2002						
AZ	2	29	40	3	255	294
CA	5	96	131	6	375	512
CO	14	222	500	12	541	1,415
ID						
IA						
KS	35	550	1,390	29	1,180	2,970
NE	33	505	1,100	8	295	640
NM	3	56	92	1	44	52
OK	2	45	97	7	247	570
SD						
TX	35	505	1,180	49	1,910	4,300
WA				3	89	325
Oth Sts	² 4	² 75	² 180			
US	141	2,172	4,905	121	5,134	11,591
2003						
AZ	² 3	² 34	² 42	3	259	288
CA	7	139	186	5	340	494
CO	15	241	445	10	494	1,330
ID						
IA						
KS	30	555	1,275	31	1,360	3,150
NE	35	555	1,120	8	315	635
NM	2	29	47	2	74	123
OK	2	49	113	7	248	540
SD						
TX	33	550	1,090	49	2,020	4,360
WA				3	105	244
Oth Sts	² 4	² 54	² 129			
US	139	2,343	4,757	120	5,353	11,509

See footnote(s) at end of table.

--continued

**Cattle on Feed: Number of Feedlots, Inventory, and Marketings, by
Size of Feedlot, State, and United States 2002-2003 ¹ (continued)**

Year and State	Feedlot Capacity in Number of Head		
	Total - 1,000+ Capacity Feedlots		
	Lots	Inventory	Cattle Marketed
	<i>Number</i>	<i>1,000 Head</i>	<i>1,000 Head</i>
2002			
AZ	7	289	341
CA	23	*495	671
CO	158	1,020	2,470
ID	50	*300	*726
IA	*350	*395	712
KS	225	2,200	5,495
NE	740	2,140	4,610
NM	10	119	177
OK	25	*335	770
SD	*146	*215	422
TX	136	2,630	5,980
WA	19	185	508
Oth Sts	320	335	755
US	*2,209	*10,658	*23,637
2003			
AZ	6	293	330
CA	22	510	721
CO	165	1,040	2,270
ID	50	300	707
IA	340	370	789
KS	225	2,430	5,470
NE	760	2,280	4,565
NM	8	115	200
OK	24	355	776
SD	152	200	467
TX	134	2,830	5,970
WA	19	*200	443
Oth Sts	300	330	759
US	2,205	*11,253	23,467

* Revised.

¹ Number of feedlots is the number of lots operating at anytime during the year. Inventory is the number on hand January 1 of the following year. The United States totals show the actual number of feedlots, inventory, and number of animals marketed in each size group. The sum of the numbers shown by State under a specified size group may or may not add to the United States total for that size group since for some States size groups are combined to avoid disclosing individual operations.

² Lots, inventory, and marketings from other size groups are included to avoid disclosing individual operations.

**Cattle on Feed: Feedlot Capacity, 1000+ Capacity Feedlots,
United States, January 1, 2002-2004 ¹**

Item	Feedlot Capacity in Number of Head		
	2002	2003	2004
	<i>1,000 Head</i>	<i>1,000 Head</i>	<i>1,000 Head</i>
US	16,600	16,500	16,600

¹ Total capacity of all 1000+ capacity feedlots in the U.S.

**Cattle on Feed: Number of Feedlots, Inventory, and Marketings,
by Size of Feedlot, Region, and United States 2002-2003 ¹**

Year and State	Feedlot Capacity in Number of Head					
	16,000 - 23,999			24,000 - 31,999		
	Lots	Inventory	Cattle Marketed	Lots	Inventory	Cattle Marketed
	<i>Number</i>	<i>1,000 Head</i>	<i>1,000 Head</i>	<i>Number</i>	<i>1,000 Head</i>	<i>1,000 Head</i>
2002						
AZ,CA,TX	22	280	577	20	350	774
CO,KS,NE	53	706	1,595	29	571	1,395
Oth Sts	9	134	265	8	131	299
US	84	1,120	2,437	57	1,052	2,468
2003						
AZ,CA,TX	21	285	548	21	433	765
CO,KS,NE	52	729	1,460	28	622	1,380
Oth Sts	6	84	181	11	190	423
US	79	1,098	2,189	60	1,245	2,568

See footnote(s) at end of table.

--continued

**Cattle on Feed: Number of Feedlots, Inventory, and Marketings, by
Size of Feedlot, Region, and United States 2002-2003 ¹ (continued)**

Year and State	Feedlot Capacity in Number of Head					
	32,000 - 49,999			50,000 and Over		
	Lots	Inventory	Cattle Marketed	Lots	Inventory	Cattle Marketed
	<i>Number</i>	<i>1,000 Head</i>	<i>1,000 Head</i>	<i>Number</i>	<i>1,000 Head</i>	<i>1,000 Head</i>
2002						
AZ,CA,TX	34	1,027	2,161	24	1,513	2,945
CO,KS,NE	30	861	2,225	19	1,155	2,800
Oth Sts	4	101	248	10	477	1,212
US	68	1,989	4,634	53	3,145	6,957
2003						
AZ,CA,TX	32	1,074	2,099	25	1,545	3,043
CO,KS,NE	30	944	2,180	19	1,225	2,935
Oth Sts	5	142	265	9	423	987
US	67	2,160	4,544	53	3,193	6,965

¹ Number of feedlots is the number of lots operating at anytime during the year. Inventory is the number on hand January 1 of the following year.

**Cattle on Feed: Number of Feedlots, Inventory, and Marketings,
Feedlots With Less Than 1,000 Head Capacity,
by State, and United States 2002-2003¹**

Year and State	Lots	Inventory	Cattle Marketed
	<i>Number</i>	<i>1,000 Head</i>	<i>1,000 Head</i>
2002			
IL	5,500	*173	*270
IN	5,900	110	180
IA	11,000	*695	*1,030
MI	4,000	144	*220
MN	7,000	*216	*330
MO	3,100	58	90
NE	4,260	*160	300
ND	1,400	44	80
OH	6,700	171	290
PA	4,900	68	*110
SD	3,100	*180	*270
WI	6,900	*191	*300
Oth Sts	29,240	*351.8	600
US	93,000	*2,561.8	*4,070
2003			
IL	5,400	154	250
IN	5,800	101	170
IA	10,500	580	970
MI	3,900	171	250
MN	6,600	229	320
MO	2,800	47	80
NE	4,140	170	300
ND	1,300	40	70
OH	6,700	188	290
PA	4,900	69	120
SD	3,100	175	270
WI	6,800	200	310
Oth Sts	29,060	433.9	700
US	91,000	2,557.9	4,100

* Revised.

¹ Number of feedlots is the number of lots operating at the end of the year. Inventory is the number on hand January 1 of the following year.

**Cattle on Feed: Number of Feedlots, Inventory, and Marketings,
by Size of Feedlot, United States 2002-2003¹**

Feedlot Capacity	2002			2003		
	Lots	Inventory	Cattle Marketed	Lots	Inventory	Cattle Marketed
	<i>No.</i>	<i>1,000 Head</i>	<i>1,000 Head</i>	<i>No.</i>	<i>1,000 Head</i>	<i>1,000 Head</i>
Less than 1,000 head	93,000	*2,561.8	*4,070	91,000	2,557.9	4,100
1,000 head or more	*2,209	*10,658	*23,637	2,205	*11,253	23,467
All Feedlots	*95,209	*13,219.8	*27,707	93,205	13,810.9	27,567

* Revised.

¹ Number of feedlots with capacity less than 1,000 head is the number of lots operating at the end of the year. Number of feedlots with capacity 1,000 head or more is the number of lots operating at anytime during the year. Inventory is the number on hand January 1 of the following year.

Terms and Definitions of Cattle on Feed Estimates

Cattle on feed are animals being fed a ration of grain, silage, hay and/or protein supplement for slaughter market that are expected to produce a carcass that will grade select or better. It excludes cattle being "backgrounded only" for later sale as feeders or later placement in another feedlot.

Placements are cattle put into a feedlot, fed a ration which will produce a carcass that will grade select or better, and are intended for the slaughter market.

Marketings are cattle shipped out of feedlots to a slaughter market.

Other disappearance includes death loss, movement from feedlots to pasture, and shipments to other feedlots for further feeding.

Reliability of Cattle on Feed Estimates

Survey Procedures: During January and July all known feedlots in the U.S. with capacity of 1,000 or more head are surveyed to provide data for cattle on feed estimates. During the other months, all known feedlots from 17 States are surveyed. The 17 States account for 98 percent of the cattle on feed in feedlots with capacity of 1,000 or more head.

Estimating Procedures: These cattle on feed estimates were prepared by the Agricultural Statistics Board after reviewing recommendations and analysis submitted by each State office. Regional and State survey data were reviewed for reasonableness with each other and with estimates from the previous month when setting the current estimates.

Revision Policy: Revisions to previous estimates are made to improve month to month relationships. Estimates for the previous month are subject to revision in all States each month when current estimates are made. In February, all monthly estimates for the previous year, and the number of feedlots and annual marketings from two years ago are reviewed and subject to revisions. The reviews are primarily based on slaughter data, state check-off or brand data, and any other data that may have been received after the original estimate was made. Estimates will also be reviewed after data from the Census of Agriculture are available. No revisions will be made after that date and estimates become final.

Reliability: Since all 1000+ capacity cattle on feed operators in every State are not included in the monthly survey, survey estimates are subject to sampling variability. Survey results are also subject to non-sampling errors such as omissions, duplications, and mistakes in reporting, recording, and processing the data. The effects of these errors cannot be measured directly. They are minimized through rigid quality controls in the data collection process and through a careful review of all reported data for consistency and reasonableness.

Index

Page

Cattle on Feed, 1,000+ Capacity Feedlots, State and U.S., January 1, 2004 and February 1, 2003-2004	4
Cattle on Feed, 1,000+ Capacity Feedlots, State and U.S., January 2003 - December 2003	7
Cattle on Feed, 1,000+ Capacity Feedlots, United States Summary	3
Cattle on Feed, Feedlot Capacity, 1,000+ Capacity Feedlots, United States, January 1, 2002-2004	19
Cattle on Feed, Number by Class, 1,000+ Capacity Feedlots, State and U.S., January 2003-October 2003	15
Marketings, 1,000+ Capacity Feedlots, State and U.S., December 2002 and January 2003-November 2003	13
Marketings, 1,000+ Capacity Feedlots, State and U.S., December 2003 and January 2003-2004	6
Number of Feedlots, Inventory, and Marketings by Size of Feedlot, Region and U.S., 2002-2003	20
Number of Feedlots, Inventory, and Marketings by Size of Feedlot, State and U.S., 2002-2003	16
Number of Feedlots, Inventory, and Marketings by Size of Feedlot, U.S., 2002-2003	22
Number of Feedlots with less than 1000 Head Capacity, Inventory, and Marketings, State and U.S., 2002-2003	22
Other Disappearance, 1,000+ Capacity Feedlots, State and U.S., December 2002 and January 2003-November 2003	14
Other Disappearance, 1,000+ Capacity Feedlots, State and U.S., December 2003 and January 2003-2004	6
Placements, 1000+ Capacity Feedlots, State and U.S., December 2002 and January 2003-November 2003	8
Placements, 1000+ Capacity Feedlots, State and U.S., December 2003 and January 2003-2004	5
Placements by Weight Group, 1,000+ Capacity Feedlots, State and U.S., December 2002 and January 2003-November 2003	9
Placements by Weight Group, 1,000+ Capacity Feedlots, State and U.S., December 2002-2003 and January 2003-2004	5
Reliability of Cattle on Feed Estimates	23
Terms and Definitions of Cattle on Feed Estimates	23

The next "*Cattle on Feed*" report will be released at 3 p.m. ET on March 19, 2004.

The United States Department of Agriculture (USDA) prohibits discrimination in all its programs on the basis of race, color, national origin, gender, religion, age, disability, political beliefs, sexual orientation, and marital or family status. (Not all prohibited bases apply to all programs.) Persons with disabilities who require alternative means for communication of program information (braille, large print, audiotape, etc.) should contact the USDA's TARGET Center at 202-720-2600 (voice and TDD).

To file a complaint of discrimination, write USDA, Director, Office of Civil Rights, Room 326-W, Whitten Building, 1400 Independence Avenue, SW, Washington, D.C., 20250-9410, or call 202-720-5964 (voice or TDD). USDA is an equal opportunity provider and employer.

ACCESS TO REPORTS!!

For your convenience, there are several ways to obtain NASS reports, data products, and services:

INTERNET ACCESS

All NASS reports are available free of charge on the worldwide Internet. For access, connect to the Internet and go to the NASS Home Page at: www.usda.gov/nass/. Select "Today's Reports" or Publications and then Reports Calendar or Publications and then Search, by Title or Subject.

E-MAIL SUBSCRIPTION

All NASS reports are available by subscription free of charge direct to your e-mail address. Starting with the NASS Home Page at www.usda.gov/nass/, click on **Publications**, then click on the **Subscribe by E-mail** button which takes you to the page describing e-mail delivery of reports. Finally, click on **Go to the Subscription Page** and follow the instructions.

PRINTED REPORTS OR DATA PRODUCTS

CALL OUR TOLL-FREE ORDER DESK: 800-999-6779 (U.S. and Canada)
Other areas, please call 703-605-6220 FAX: 703-605-6900
(Visa, MasterCard, check, or money order acceptable for payment.)

ASSISTANCE

For **assistance** with general agricultural statistics or further information about NASS or its products or services, contact the **Agricultural Statistics Hotline** at **800-727-9540**, 7:30 a.m. to 4:00 p.m. ET, or e-mail: nass@nass.usda.gov.
