



# Cattle on Feed

---

Released March 19, 2004, by the National Agricultural Statistics Service (NASS), Agricultural Statistics Board, U.S. Department of Agriculture. For information on "Cattle on Feed" call Steve Anderson at (202) 720-3040, office hours 7:30 a.m. to 4:00 p.m. ET.

## U.S. Cattle on Feed Up 4 Percent

**Cattle and calves on feed** for slaughter market in the United States for feedlots with capacity of 1,000 or more head totaled 10.98 million head on March 1, 2004. The inventory was up 4 percent from the 10.55 million head on March 1, 2003 but 5 percent below March 1, 2002.

**Placements** in feedlots during February totaled 1.61 million, 2 percent below 2003 and 11 percent below 2002. Net placements were 1.54 million. During February, placements of cattle and calves weighing less than 600 pounds were 319,000, 600-699 pounds were 351,000, 700-799 pounds were 548,000, and 800 pounds and greater were 392,000.

**Marketings** of fed cattle during February totaled 1.69 million, 2 percent below 2003 and 6 percent below 2002.

**Other disappearance** totaled 69,000 during February, 3 percent below 2003 but 10 percent above 2002.

**Cattle on Feed: Number on Feed, Placements, Marketings, and  
Other Disappearance, 1,000+ Capacity Feedlots,  
United States, March 1, 2002-2004**

Item	Number			2004 as % of	
	2002	2003	2004	2002	2003
	<i>1,000 Head</i>	<i>1,000 Head</i>	<i>1,000 Head</i>	<i>Percent</i>	<i>Percent</i>
On Feed Feb 1 <sup>1</sup>	11,572	10,700	*11,128	96	104
Placed on Feed During Feb	1,810	1,650	1,610	89	98
Fed Cattle Marketed During Feb	1,801	1,733	1,692	94	98
Other Disappearance During Feb <sup>2</sup>	63	71	69	110	97
On Feed Mar 1 <sup>1</sup>	11,518	10,546	10,977	95	104

\* Revised.

<sup>1</sup> Cattle and calves on feed are animals for slaughter market being fed a ration of grain or other concentrates and are expected to produce a carcass that will grade select or better.

<sup>2</sup> Includes death loss, movement from feedlots to pasture, and shipments to other feedlots for further feeding.

**Cattle on Feed: Number on Feed, Placements, Marketings, and  
Other Disappearance, 1,000+ Capacity Feedlots,  
United States, February 1, 2002-2004**

Item	Number			2004 as % of	
	2002	2003	2004	2002	2003
	<i>1,000 Head</i>	<i>1,000 Head</i>	<i>1,000 Head</i>	<i>Percent</i>	<i>Percent</i>
On Feed Jan 1 <sup>1</sup>	11,565	10,658	11,253	97	106
Placed on Feed During Jan	2,179	2,089	*1,751	80	84
Fed Cattle Marketed During Jan	2,083	1,972	1,782	86	90
Other Disappearance During Jan <sup>2</sup>	89	75	94	106	125
On Feed Feb 1 <sup>1</sup>	11,572	10,700	*11,128	96	104

\* Revised.

<sup>1</sup> Cattle and calves on feed are animals for slaughter market being fed a ration of grain or other concentrates and are expected to produce a carcass that will grade select or better.

<sup>2</sup> Includes death loss, movement from feedlots to pasture, and shipments to other feedlots for further feeding.

**Cattle on Feed: Number on Feed, 1,000+ Capacity Feedlots,  
by Month, State, and United States 2003-2004 <sup>1</sup>**

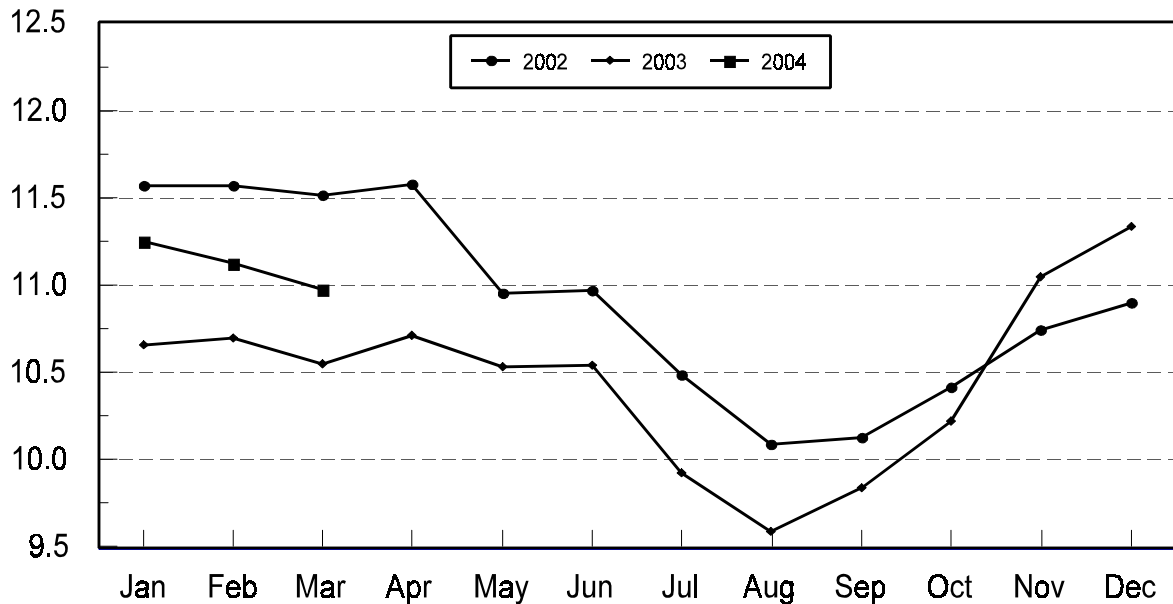
State	Mar 1, 2003	Feb 1, 2004	Mar 1, 2004		
			Number	as % of 2003	as % of Feb
	<i>1,000 Head</i>	<i>1,000 Head</i>	<i>1,000 Head</i>	<i>Percent</i>	<i>Percent</i>
AZ	279	296	295	106	100
CA	475	500	500	105	100
CO	990	1,040	1,020	103	98
ID	280	275	265	95	96
IA	380	*385	405	107	105
KS	2,240	2,420	2,390	107	99
NE	2,190	2,280	2,270	104	100
NM	112	117	112	100	96
OK	320	350	335	105	96
SD	215	200	210	98	105
TX	2,560	2,770	2,690	105	97
WA	180	185	175	97	95
Oth Sts	325	310	310	95	100
US	10,546	*11,128	10,977	104	99

\* Revised.

<sup>1</sup> Cattle and calves on feed are animals for slaughter market being fed a ration of grain or other concentrates and are expected to produce a carcass that will grade select or better.

**United States Cattle on Feed  
1,000+ Capacity Feedlots**

Million Head



**Cattle on Feed: Number Placed on Feed, 1,000+ Capacity Feedlots,  
by Month, State, and United States 2003-2004**

State	During Feb 2003	During Jan 2004	During Feb 2004		
			Number	as % of 2003	as % of Jan
	<i>1,000 Head</i>	<i>1,000 Head</i>	<i>1,000 Head</i>	<i>Percent</i>	<i>Percent</i>
AZ	22	32	27	123	84
CA	54	55	56	104	102
CO	160	165	155	97	94
ID	48	41	43	90	105
IA	63	*64	61	97	95
KS	410	455	390	95	86
NE	330	380	350	106	92
NM	11	17	16	145	94
OK	46	50	47	102	94
SD	40	30	43	108	143
TX	370	390	350	95	90
WA	31	26	24	77	92
Oth Sts	65	46	48	74	104
US	1,650	*1,751	1,610	98	92

\* Revised.

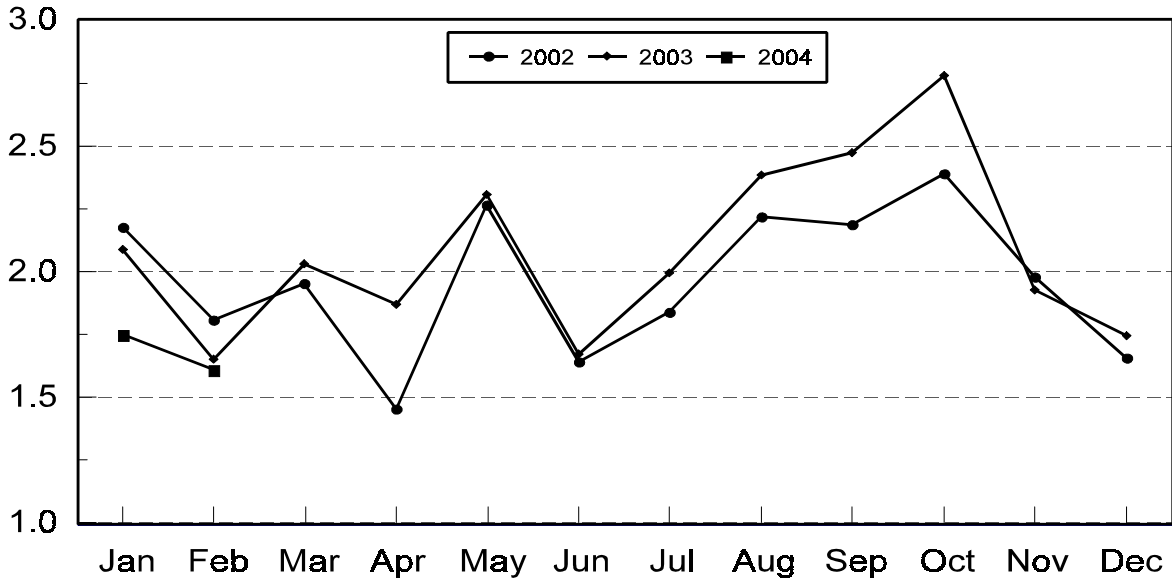
**Cattle on Feed: Number Placed on Feed by Weight Group, 1,000+ Capacity  
Feedlots, by Month, State, and United States, 2003-2004**

State	During February									
	Under 600		600-699		700-799		800 Plus		Total	
	2003	2004	2003	2004	2003	2004	2003	2004	2003	2004
	<i>1,000 Head</i>	<i>1,000 Head</i>	<i>1,000 Head</i>	<i>1,000 Head</i>	<i>1,000 Head</i>	<i>1,000 Head</i>	<i>1,000 Head</i>	<i>1,000 Head</i>	<i>1,000 Head</i>	<i>1,000 Head</i>
CO	15	13	37	38	67	58	41	46	160	155
KS	35	55	105	85	165	150	105	100	410	390
NE	40	51	69	63	124	125	97	111	330	350
TX	70	85	100	100	137	125	63	40	370	350
Oth Sts	100	115	60	65	100	90	120	95	380	365
US	260	319	371	351	593	548	426	392	1,650	1,610
	During January									
	Under 600		600-699		700-799		800 Plus		Total	
	2003	2004	2003	2004	2003	2004	2003	2004	2003	2004
	<i>1,000 Head</i>	<i>1,000 Head</i>	<i>1,000 Head</i>	<i>1,000 Head</i>	<i>1,000 Head</i>	<i>1,000 Head</i>	<i>1,000 Head</i>	<i>1,000 Head</i>	<i>1,000 Head</i>	<i>1,000 Head</i>
CO	43	25	49	45	95	61	38	34	225	165
KS	65	60	185	140	200	175	90	80	540	455
NE	70	47	135	95	161	140	114	98	480	380
TX	126	110	122	120	126	115	46	45	420	390
Oth Sts	120	*125	84	66	110	85	110	85	424	*361
US	424	*367	575	466	692	576	398	342	2,089	*1,751

\* Revised.

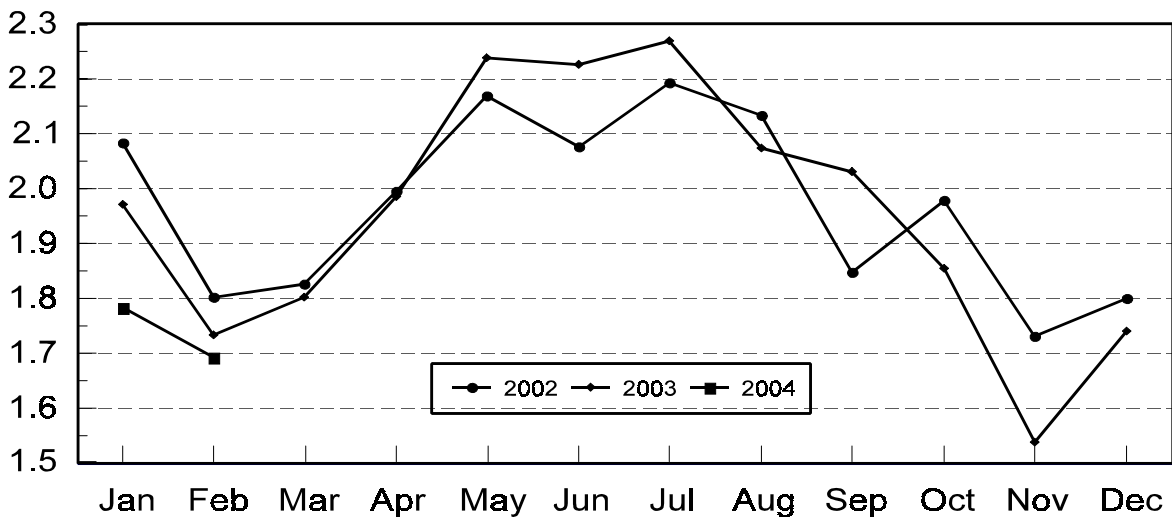
## United States Cattle on Feed 1,000+ Capacity Feedlots Number Placed

Million Head



## United States Cattle on Feed 1,000+ Capacity Feedlots Number Marketed

Million Head



**Cattle on Feed: Number Marketed, 1,000+ Capacity Feedlots,  
by Month, State, and United States 2003-2004**

State	During Feb 2003	During Jan 2004	During Feb 2004		
			Number	as % of 2003	as % of Jan
	<i>1,000 Head</i>	<i>1,000 Head</i>	<i>1,000 Head</i>	<i>Percent</i>	<i>Percent</i>
AZ	31	26	25	81	96
CA	56	60	52	93	87
CO	190	160	165	87	103
ID	57	64	52	91	81
IA	71	47	40	56	85
KS	370	440	405	109	92
NE	350	360	345	99	96
NM	12	13	20	167	154
OK	55	53	59	107	111
SD	39	29	32	82	110
TX	395	430	420	106	98
WA	30	40	32	107	80
Oth Sts	77	60	45	58	75
US	1,733	1,782	1,692	98	95

**Cattle on Feed: Other Disappearance, 1,000+ Capacity Feedlots,  
by Month, State, and United States 2003-2004 <sup>1</sup>**

State	During Feb 2003	During Jan 2004	During Feb 2004		
			Number	as % of 2003	as % of Jan
	<i>1,000 Head</i>	<i>1,000 Head</i>	<i>1,000 Head</i>	<i>Percent</i>	<i>Percent</i>
AZ	3	3	3	100	100
CA	3	5	4	133	80
CO	10	5	10	100	200
ID	1	2	1	100	50
IA	2	2	1	50	50
KS	20	25	15	75	60
NE	10	20	15	150	75
NM	1	2	1	100	50
OK	1	2	3	300	150
SD	1	1	1	100	100
TX	15	20	10	67	50
WA	1	1	2	200	200
Oth Sts	3	6	3	100	50
US	71	94	69	97	73

<sup>1</sup> Includes death loss, movement from feedlots to pasture, and shipments to other feedlots for further feeding.

## Terms and Definitions of Cattle on Feed Estimates

**Cattle on feed** are animals being fed a ration of grain, silage, hay and/or protein supplement for slaughter market that are expected to produce a carcass that will grade select or better. It excludes cattle being "backgrounded only" for later sale as feeders or later placement in another feedlot.

**Placements** are cattle put into a feedlot, fed a ration which will produce a carcass that will grade select or better, and are intended for the slaughter market.

**Marketings** are cattle shipped out of feedlots to a slaughter market.

**Other disappearance** includes death loss, movement from feedlots to pasture, and shipments to other feedlots for further feeding.

### Reliability of Cattle on Feed Estimates

**Survey Procedures:** During January and July all known feedlots in the U.S. with capacity of 1,000 or more head are surveyed to provide data for cattle on feed estimates. During the other months, all known feedlots from 17 States are surveyed. The 17 States account for 98 percent of the cattle on feed.

**Estimating Procedures:** These cattle on feed estimates were prepared by the Agricultural Statistics Board after reviewing recommendations and analysis submitted by each State office. Regional and State survey data were reviewed for reasonableness with each other and with estimates from the previous month when setting the current estimates.

**Revision Policy:** Revisions to previous estimates are made to improve month to month relationships. Estimates for the previous month are subject to revision in all States each month when current estimates are made. In February, all monthly estimates for the previous year, and the number of feedlots and annual marketings from two years ago are reviewed and subject to revisions. The reviews are primarily based on slaughter data, state check-off or brand data, and any other data that may have been received after the original estimate was made. Estimates will also be reviewed after data from the Census of Agriculture are available. No revisions will be made after that date and estimates become final.

**Reliability:** Since all 1000+ capacity cattle on feed operators in every State are not included in the monthly survey, survey estimates are subject to sampling variability. Survey results are also subject to non-sampling errors such as omissions, duplications, and mistakes in reporting, recording, and processing the data. The effects of these errors cannot be measured directly. They are minimized through rigid quality controls in the data collection process and through a careful review of all reported data for consistency and reasonableness.

The next "Cattle on Feed" report will be released at 3 p.m. ET on April 16, 2004.

The United States Department of Agriculture (USDA) prohibits discrimination in all its programs on the basis of race, color, national origin, gender, religion, age, disability, political beliefs, sexual orientation, and marital or family status. (Not all prohibited bases apply to all programs.) Persons with disabilities who require alternative means for communication of program information (braille, large print, audiotape, etc.) should contact the USDA's TARGET Center at 202-720-2600 (voice and TDD).

To file a complaint of discrimination, write USDA, Director, Office of Civil Rights, Room 326-W, Whitten Building, 1400 Independence Avenue, SW, Washington, D.C., 20250-9410, or call 202-720-5964 (voice or TDD). USDA is an equal opportunity provider and employer.

## ACCESS TO REPORTS!!

---

For your convenience, there are several ways to obtain NASS reports, data products, and services:

### INTERNET ACCESS

All NASS reports are available free of charge on the worldwide Internet. For access, connect to the Internet and go to the NASS Home Page at: [www.usda.gov/nass/](http://www.usda.gov/nass/). Select "Today's Reports" or Publications and then Reports Calendar or Publications and then Search, by Title or Subject.

### E-MAIL SUBSCRIPTION

All NASS reports are available by subscription free of charge direct to your e-mail address. Starting with the NASS Home Page at [www.usda.gov/nass/](http://www.usda.gov/nass/), click on **Publications**, then click on the **Subscribe by E-mail** button which takes you to the page describing e-mail delivery of reports. Finally, click on **Go to the Subscription Page** and follow the instructions.

-----

### PRINTED REPORTS OR DATA PRODUCTS

**CALL OUR TOLL-FREE ORDER DESK: 800-999-6779 (U.S. and Canada)**  
**Other areas, please call 703-605-6220      FAX: 703-605-6900**  
**(Visa, MasterCard, check, or money order acceptable for payment.)**

-----

### ASSISTANCE

For **assistance** with general agricultural statistics or further information about NASS or its products or services, contact the **Agricultural Statistics Hotline** at **800-727-9540**, 7:30 a.m. to 4:00 p.m. ET, or e-mail: [nass@nass.usda.gov](mailto:nass@nass.usda.gov).

---