



# Cattle on Feed

---

Released April 16, 2004, by the National Agricultural Statistics Service (NASS), Agricultural Statistics Board, U.S. Department of Agriculture. For information on *Cattle on Feed* call Steve Anderson at (202) 720-3040, office hours 7:30 a.m. to 4:00 p.m. ET.

## U.S. Cattle on Feed Up Slightly

**Cattle and calves on feed** for slaughter market in the United States for feedlots with capacity of 1,000 or more head totaled 10.75 million head on April 1, 2004. The inventory was slightly above April 1, 2003 and 7 percent below April 1, 2002. The inventory included 6.62 million steers and steer calves, down 2 percent from the previous year. This group accounted for 62 percent of the total inventory. Heifers and heifer calves accounted for 4.06 million head, up 4 percent from 2003.

**Placements** in feedlots during March totaled 1.80 million, 11 percent below 2003 and 8 percent below 2002. Net placements were 1.74 million. During March, placements of cattle and calves weighing less than 600 pounds were 347,000, 600-699 pounds were 346,000, 700-799 pounds were 641,000, and 800 pounds and greater were 470,000.

**Marketings** of fed cattle during March totaled 1.97 million, 9 percent above 2003 and 8 percent above 2002.

**Other disappearance** totaled 67,000 during March, 8 percent above 2003 and 3 percent below 2002.

**Cattle on Feed: Number on Feed, Placements, Marketings, and  
Other Disappearance, 1,000+ Capacity Feedlots,  
United States, April 1, 2002-2004**

Item	Number			2004 as % of	
	2002	2003	2004	2002	2003
	<i>1,000 Head</i>	<i>1,000 Head</i>	<i>1,000 Head</i>	<i>Percent</i>	<i>Percent</i>
On Feed Mar 1 <sup>1</sup>	11,518	10,546	10,977	95	104
Placed on Feed During Mar	1,953	2,032	1,804	92	89
Fed Cattle Marketed During Mar	1,825	1,803	1,966	108	109
Other Disappearance During Mar <sup>2</sup>	69	62	67	97	108
On Feed Apr 1 <sup>1</sup>	11,577	10,713	10,748	93	100

<sup>1</sup> Cattle and calves on feed are animals for slaughter market being fed a ration of grain or other concentrates and are expected to produce a carcass that will grade select or better.

<sup>2</sup> Includes death loss, movement from feedlots to pasture, and shipments to other feedlots for further feeding.

**Cattle on Feed: Number on Feed, Placements, Marketings, and  
Other Disappearance, 1,000+ Capacity Feedlots,  
United States, March 1, 2002-2004**

Item	Number			2004 as % of	
	2002	2003	2004	2002	2003
	<i>1,000 Head</i>	<i>1,000 Head</i>	<i>1,000 Head</i>	<i>Percent</i>	<i>Percent</i>
On Feed Feb 1 <sup>1</sup>	11,572	10,700	11,128	96	104
Placed on Feed During Feb	1,810	1,650	1,610	89	98
Fed Cattle Marketed During Feb	1,801	1,733	1,692	94	98
Other Disappearance During Feb <sup>2</sup>	63	71	69	110	97
On Feed Mar 1 <sup>1</sup>	11,518	10,546	10,977	95	104

<sup>1</sup> Cattle and calves on feed are animals for slaughter market being fed a ration of grain or other concentrates and are expected to produce a carcass that will grade select or better.

<sup>2</sup> Includes death loss, movement from feedlots to pasture, and shipments to other feedlots for further feeding.

**Cattle on Feed: Number on Feed by Class, 1,000+ Capacity Feedlots,  
United States, April 1, 2002-2004**

Item	Number			2004 as % of	
	2002	2003	2004	2002	2003
	<i>1,000 Head</i>	<i>1,000 Head</i>	<i>1,000 Head</i>	<i>Percent</i>	<i>Percent</i>
Class on Feed Apr 1					
Steers and Steer Calves	7,232	6,722	6,620	92	98
Heifers and Heifer Calves	4,302	3,921	4,061	94	104
Cows and Bulls	43	70	67	156	96

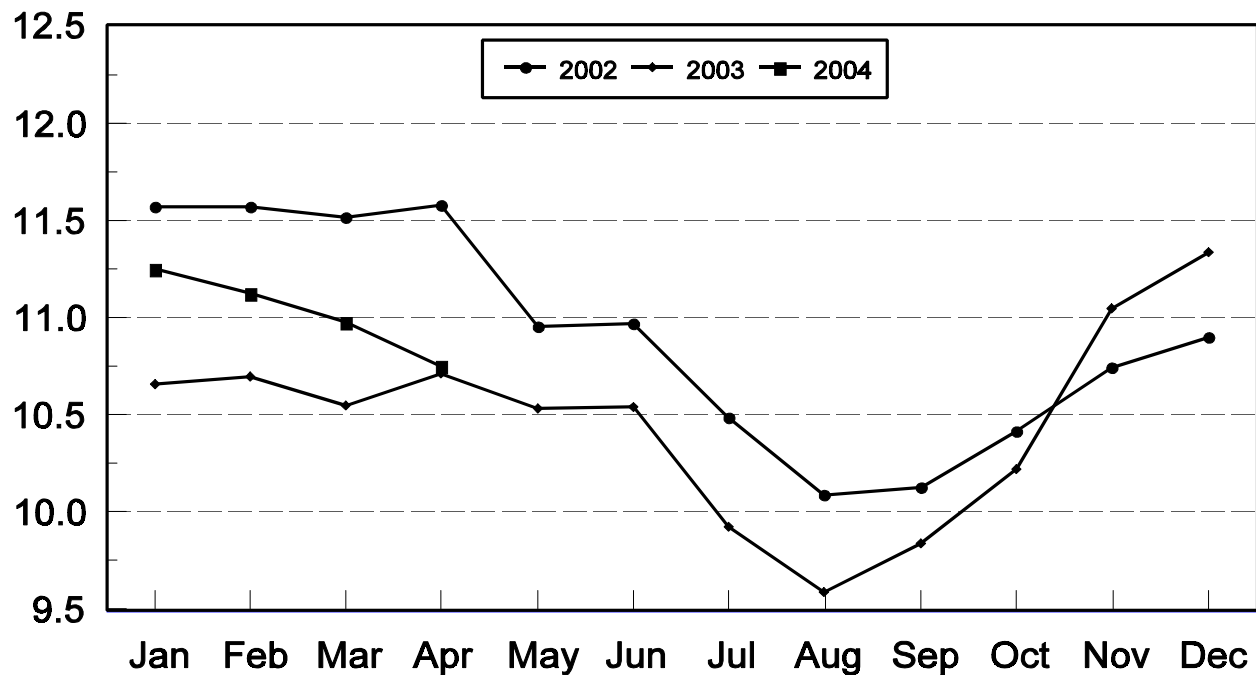
**Cattle on Feed: Number on Feed, 1,000+ Capacity Feedlots,  
by Month, State, and United States 2003-2004 <sup>1</sup>**

State	Apr 1, 2003	Mar 1, 2004	Apr 1, 2004		
			Number	as % of 2003	as % of Mar
	<i>1,000 Head</i>	<i>1,000 Head</i>	<i>1,000 Head</i>	<i>Percent</i>	<i>Percent</i>
AZ	278	295	293	105	99
CA	475	500	495	104	99
CO	970	1,020	970	100	95
ID	280	265	255	91	96
IA	375	405	415	111	102
KS	2,320	2,390	2,360	102	99
NE	2,190	2,270	2,210	101	97
NM	105	112	105	100	94
OK	340	335	330	97	99
SD	210	210	205	98	98
TX	2,670	2,690	2,640	99	98
WA	180	175	170	94	97
Oth Sts	320	310	300	94	97
US	10,713	10,977	10,748	100	98

<sup>1</sup> Cattle and calves on feed are animals for slaughter market being fed a ration of grain or other concentrates and are expected to produce a carcass that will grade select or better.

## United States Cattle on Feed 1,000+ Capacity Feedlots

Million Head



**Cattle on Feed: Number Placed on Feed, 1,000+ Capacity Feedlots,  
by Month, State, and United States 2003-2004**

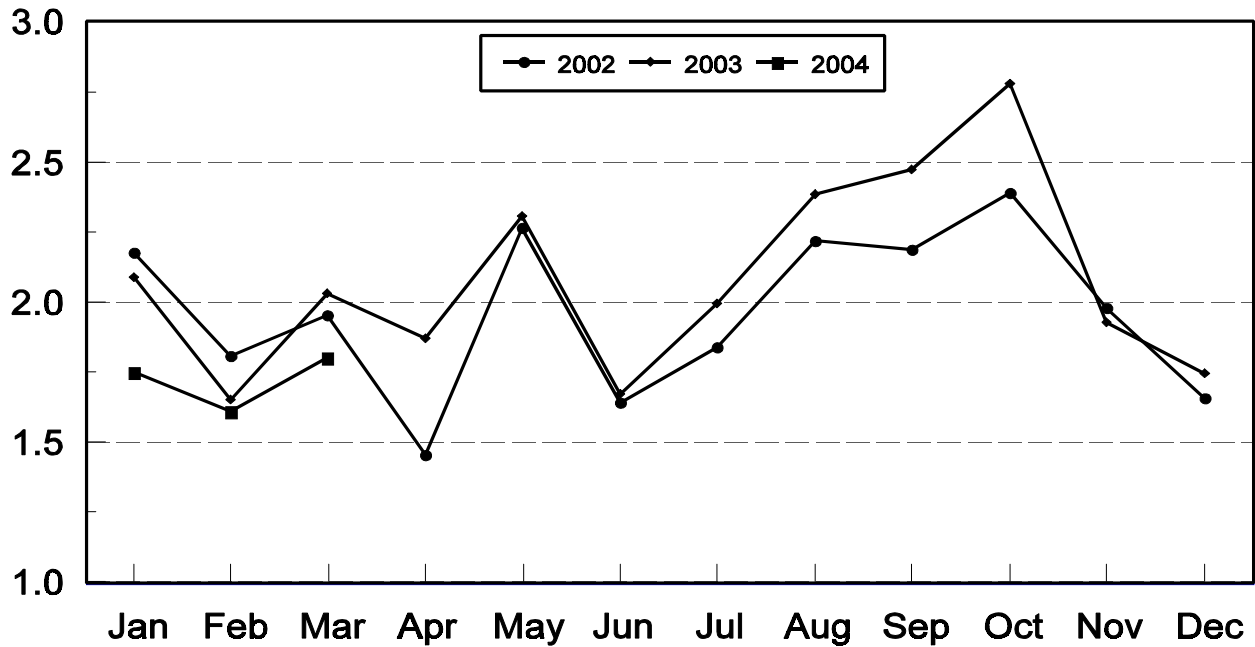
State	During Mar 2003	During Feb 2004	During Mar 2004		
			Number	as % of 2003	as % of Feb
	<i>1,000 Head</i>	<i>1,000 Head</i>	<i>1,000 Head</i>	<i>Percent</i>	<i>Percent</i>
AZ	31	27	33	106	122
CA	62	56	70	113	125
CO	160	155	150	94	97
ID	58	43	39	67	91
IA	56	61	69	123	113
KS	510	390	460	90	118
NE	320	350	295	92	84
NM	16	16	16	100	100
OK	94	47	74	79	157
SD	39	43	33	85	77
TX	600	350	490	82	140
WA	31	24	29	94	121
Oth Sts	55	48	46	84	96
US	2,032	1,610	1,804	89	112

**Cattle on Feed: Number Placed on Feed by Weight Group, 1,000+ Capacity  
Feedlots, by Month, State, and United States, 2003-2004**

State	During March									
	Under 600		600-699		700-799		800 Plus		Total	
	2003	2004	2003	2004	2003	2004	2003	2004	2003	2004
	<i>1,000 Head</i>	<i>1,000 Head</i>	<i>1,000 Head</i>	<i>1,000 Head</i>	<i>1,000 Head</i>	<i>1,000 Head</i>	<i>1,000 Head</i>	<i>1,000 Head</i>	<i>1,000 Head</i>	<i>1,000 Head</i>
CO	15	15	26	30	61	60	58	45	160	150
KS	45	55	105	95	200	195	160	115	510	460
NE	22	32	55	47	113	106	130	110	320	295
TX	78	120	128	120	248	180	146	70	600	490
Oth Sts	110	125	75	54	120	100	137	130	442	409
US	270	347	389	346	742	641	631	470	2,032	1,804
	During February									
	Under 600		600-699		700-799		800 Plus		Total	
	2003	2004	2003	2004	2003	2004	2003	2004	2003	2004
	<i>1,000 Head</i>	<i>1,000 Head</i>	<i>1,000 Head</i>	<i>1,000 Head</i>	<i>1,000 Head</i>	<i>1,000 Head</i>	<i>1,000 Head</i>	<i>1,000 Head</i>	<i>1,000 Head</i>	<i>1,000 Head</i>
CO	15	13	37	38	67	58	41	46	160	155
KS	35	55	105	85	165	150	105	100	410	390
NE	40	51	69	63	124	125	97	111	330	350
TX	70	85	100	100	137	125	63	40	370	350
Oth Sts	100	115	60	65	100	90	120	95	380	365
US	260	319	371	351	593	548	426	392	1,650	1,610

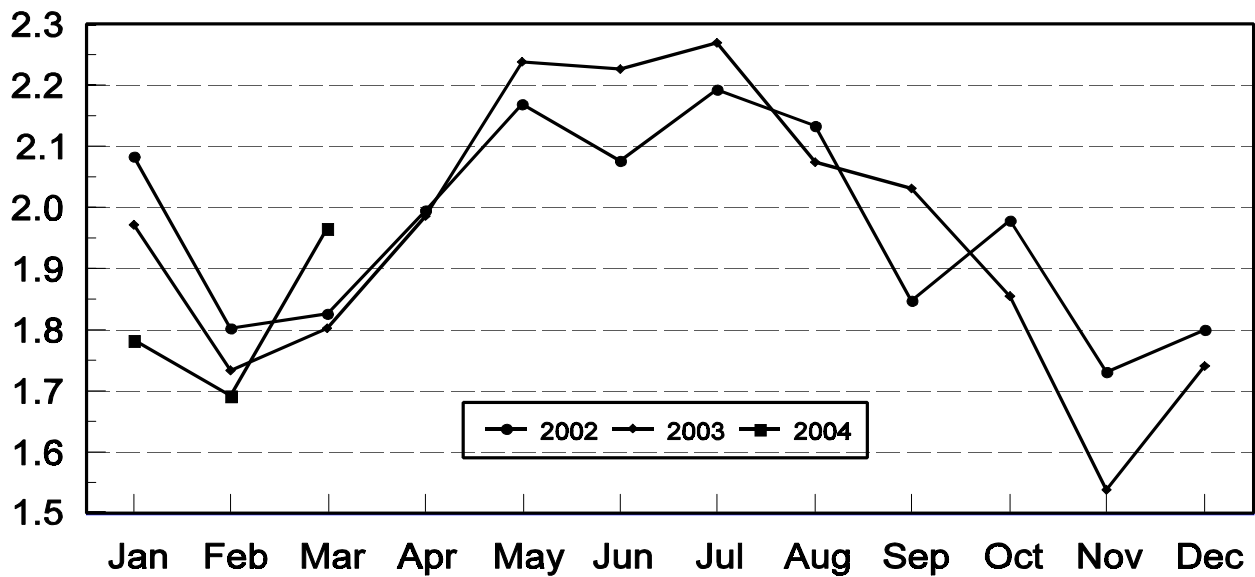
## United States Cattle on Feed 1,000+ Capacity Feedlots Number Placed

Million Head



## United States Cattle on Feed 1,000+ Capacity Feedlots Number Marketed

Million Head



**Cattle on Feed: Number Marketed, 1,000+ Capacity Feedlots,  
by Month, State, and United States 2003-2004**

State	During Mar 2003	During Feb 2004	During Mar 2004		
			Number	as % of 2003	as % of Feb
	<i>1,000 Head</i>	<i>1,000 Head</i>	<i>1,000 Head</i>	<i>Percent</i>	<i>Percent</i>
AZ	29	25	32	110	128
CA	58	52	71	122	137
CO	175	165	190	109	115
ID	57	52	46	81	88
IA	60	40	56	93	140
KS	410	405	470	115	116
NE	310	345	350	113	101
NM	22	20	21	95	105
OK	71	59	77	108	131
SD	43	32	36	84	113
TX	480	420	530	110	126
WA	30	32	33	110	103
Oth Sts	58	45	54	93	120
US	1,803	1,692	1,966	109	116

**Cattle on Feed: Other Disappearance, 1,000+ Capacity Feedlots,  
by Month, State, and United States 2003-2004 <sup>1</sup>**

State	During Mar 2003	During Feb 2004	During Mar 2004		
			Number	as % of 2003	as % of Feb
	<i>1,000 Head</i>	<i>1,000 Head</i>	<i>1,000 Head</i>	<i>Percent</i>	<i>Percent</i>
AZ	3	3	3	100	100
CA	4	4	4	100	100
CO	5	10	10	200	100
ID	1	1	3	300	300
IA	1	1	3	300	300
KS	20	15	20	100	133
NE	10	15	5	50	33
NM	1	1	2	200	200
OK	3	3	2	67	67
SD	1	1	2	200	200
TX	10	10	10	100	100
WA	1	2	1	100	50
Oth Sts	2	3	2	100	67
US	62	69	67	108	97

<sup>1</sup> Includes death loss, movement from feedlots to pasture, and shipments to other feedlots for further feeding.

**Cattle on Feed: Number on Feed by Class, 1,000+ Capacity Feedlots,  
by Quarter, State, and United States, 2003-2004**

State	Steers & Steer Calves			Heifers & Heifer Calves			Cows and Bulls		
	Apr 1, 2003	Jan 1, 2004	Apr 1, 2004	Apr 1, 2003	Jan 1, 2004	Apr 1, 2004	Apr 1, 2003	Jan 1, 2004	Apr 1, 2004
	<i>1,000 Head</i>	<i>1,000 Head</i>	<i>1,000 Head</i>	<i>1,000 Head</i>	<i>1,000 Head</i>	<i>1,000 Head</i>	<i>1,000 Head</i>	<i>1,000 Head</i>	<i>1,000 Head</i>
AZ	274	289	289	4	4	4	0	0	0
CA	445	470	465	30	40	30	0	0	0
CO	590	625	575	375	410	390	5	5	5
ID	179	191	160	100	108	95	1	1	0
IA	240	250	260	134	119	154	1	1	1
KS	1,270	1,270	1,230	1,030	1,150	1,110	20	10	20
NE	1,305	1,310	1,300	860	940	890	25	30	20
NM	52	50	49	53	65	56	0	0	0
OK	220	200	200	118	155	129	2	0	1
SD	107	110	112	95	74	81	8	16	12
TX	1,710	1,720	1,670	955	1,107	967	5	3	3
WA	100	125	105	80	73	65	0	2	0
Oth Sts	230	235	205	87	85	90	3	10	5
US	6,722	6,845	6,620	3,921	4,330	4,061	70	78	67

## Terms and Definitions of Cattle on Feed Estimates

**Cattle on feed** are animals being fed a ration of grain, silage, hay and/or protein supplement for slaughter market that are expected to produce a carcass that will grade select or better. It excludes cattle being "backgrounded only" for later sale as feeders or later placement in another feedlot.

**Placements** are cattle put into a feedlot, fed a ration which will produce a carcass that will grade select or better, and are intended for the slaughter market.

**Marketings** are cattle shipped out of feedlots to a slaughter market.

**Other disappearance** includes death loss, movement from feedlots to pasture, and shipments to other feedlots for further feeding.

## Reliability of Cattle on Feed Estimates

**Survey Procedures:** During January and July all known feedlots in the U.S. with capacity of 1,000 or more head are surveyed to provide data for cattle on feed estimates. During the other months, all known feedlots from 17 States are surveyed. The 17 States account for 98 percent of the cattle on feed.

**Estimating Procedures:** These cattle on feed estimates were prepared by the Agricultural Statistics Board after reviewing recommendations and analysis submitted by each State office. Regional and State survey data were reviewed for reasonableness with each other and with estimates from the previous month when setting the current estimates.

**Revision Policy:** Revisions to previous estimates are made to improve month to month relationships. Estimates for the previous month are subject to revision in all States each month when current estimates are made. In February, all monthly estimates for the previous year, and the number of feedlots and annual marketings from two years ago are reviewed and subject to revisions. The reviews are primarily based on slaughter data, state check-off or brand data, and any other data that may have been received after the original estimate was made. Estimates will also be reviewed after data from the Census of Agriculture are available. No revisions will be made after that date and estimates become final.

**Reliability:** Since all 1,000+ capacity cattle on feed operators in every State are not included in the monthly survey, survey estimates are subject to sampling variability. Survey results are also subject to non-sampling errors such as omissions, duplications, and mistakes in reporting, recording, and processing the data. The effects of these errors cannot be measured directly. They are minimized through rigid quality controls in the data collection process and through a careful review of all reported data for consistency and reasonableness.



The next *Cattle on Feed* report will be released at 3 p.m. ET on May 21, 2004.

The United States Department of Agriculture (USDA) prohibits discrimination in all its programs on the basis of race, color, national origin, gender, religion, age, disability, political beliefs, sexual orientation, and marital or family status. (Not all prohibited bases apply to all programs.) Persons with disabilities who require alternative means for communication of program information (braille, large print, audiotape, etc.) should contact the USDA's TARGET Center at 202-720-2600 (voice and TDD).

To file a complaint of discrimination, write USDA, Director, Office of Civil Rights, Room 326-W, Whitten Building, 1400 Independence Avenue, SW, Washington, D.C., 20250-9410, or call 202-720-5964 (voice or TDD). USDA is an equal opportunity provider and employer.

## ACCESS TO REPORTS!!

---

For your convenience, there are several ways to obtain NASS reports, data products, and services:

### INTERNET ACCESS

All NASS reports are available free of charge on the worldwide Internet. For access, connect to the Internet and go to the NASS Home Page at: [www.usda.gov/nass/](http://www.usda.gov/nass/). Select "Today's Reports" or Publications and then Reports Calendar or Publications and then Search, by Title or Subject.

### E-MAIL SUBSCRIPTION

All NASS reports are available by subscription free of charge direct to your e-mail address. Starting with the NASS Home Page at [www.usda.gov/nass/](http://www.usda.gov/nass/), click on **Publications**, then click on the **Subscribe by E-mail** button which takes you to the page describing e-mail delivery of reports. Finally, click on **Go to the Subscription Page** and follow the instructions.

-----

### PRINTED REPORTS OR DATA PRODUCTS

**CALL OUR TOLL-FREE ORDER DESK: 800-999-6779 (U.S. and Canada)**  
**Other areas, please call 703-605-6220      FAX: 703-605-6900**  
**(Visa, MasterCard, check, or money order acceptable for payment.)**

-----

### ASSISTANCE

For **assistance** with general agricultural statistics or further information about NASS or its products or services, contact the **Agricultural Statistics Hotline** at **800-727-9540**, 7:30 a.m. to 4:00 p.m. ET, or e-mail: [nass@nass.usda.gov](mailto:nass@nass.usda.gov).

---