



Cattle on Feed

Released May 21, 2004, by the National Agricultural Statistics Service (NASS), Agricultural Statistics Board, U.S. Department of Agriculture. For information on *Cattle on Feed* call Steve Anderson at (202) 720-3040, office hours 7:30 a.m. to 4:00 p.m. ET.

U.S. Cattle on Feed Down 2 Percent

Cattle and calves on feed for slaughter market in the United States for feedlots with capacity of 1,000 or more head totaled 10.36 million head on May 1, 2004. The inventory was 2 percent below May 1, 2003 and 6 percent below May 1, 2002.

Placements in feedlots during April totaled 1.60 million, 14 percent below 2003 but 10 percent above 2002. Net placements were 1.51 million. During April, placements of cattle and calves weighing less than 600 pounds were 316,000, 600-699 pounds were 302,000, 700-799 pounds were 567,000, and 800 pounds and greater were 418,000.

Marketings of fed cattle during April totaled 1.89 million, 5 percent below both 2003 and 2002.

Other disappearance totaled 97,000 during April, 54 percent above 2003 and 17 percent above 2002.

**Cattle on Feed: Number on Feed, Placements, Marketings, and
Other Disappearance, 1,000+ Capacity Feedlots,
United States, May 1, 2002-2004**

Item	Number			2004 as % of	
	2002	2003	2004	2002	2003
	<i>1,000 Head</i>	<i>1,000 Head</i>	<i>1,000 Head</i>	<i>Percent</i>	<i>Percent</i>
On Feed Apr 1 ¹	11,587	10,713	10,748	93	100
Placed on Feed During Apr	1,463	1,870	1,603	110	86
Fed Cattle Marketed During Apr	1,996	1,985	1,894	95	95
Other Disappearance During Apr ²	83	63	97	117	154
On Feed May 1 ¹	10,971	10,535	10,360	94	98

¹ Cattle and calves on feed are animals for slaughter market being fed a ration of grain or other concentrates and are expected to produce a carcass that will grade select or better.

² Includes death loss, movement from feedlots to pasture, and shipments to other feedlots for further feeding.

**Cattle on Feed: Number on Feed, Placements, Marketings, and
Other Disappearance, 1,000+ Capacity Feedlots,
United States, April 1, 2002-2004**

Item	Number			2004 as % of	
	2002	2003	2004	2002	2003
	<i>1,000 Head</i>	<i>1,000 Head</i>	<i>1,000 Head</i>	<i>Percent</i>	<i>Percent</i>
On Feed Mar 1 ¹	11,518	10,546	10,977	95	104
Placed on Feed During Mar	1,963	2,032	1,804	92	89
Fed Cattle Marketed During Mar	1,825	1,803	1,966	108	109
Other Disappearance During Mar ²	69	62	67	97	108
On Feed Apr 1 ¹	11,587	10,713	10,748	93	100

¹ Cattle and calves on feed are animals for slaughter market being fed a ration of grain or other concentrates and are expected to produce a carcass that will grade select or better.

² Includes death loss, movement from feedlots to pasture, and shipments to other feedlots for further feeding.

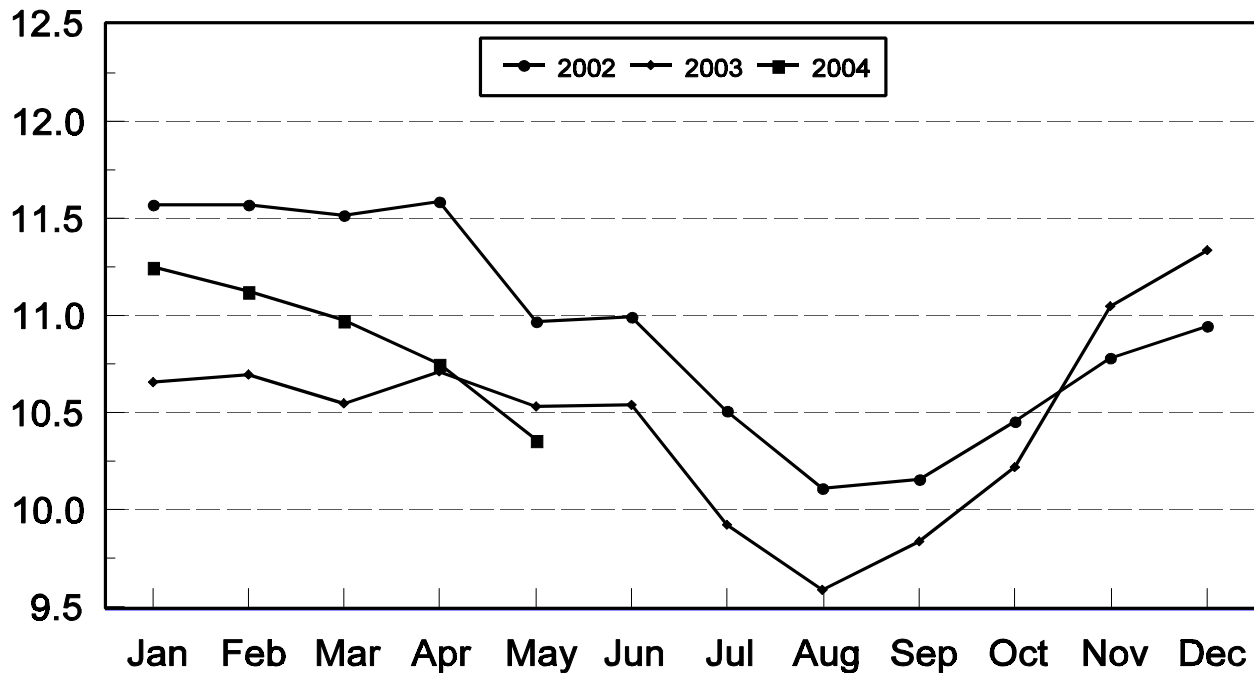
**Cattle on Feed: Number on Feed, 1,000+ Capacity Feedlots,
by Month, State, and United States 2003-2004 ¹**

State	May 1, 2003	Apr 1, 2004	May 1, 2004		
			Number	as % of 2003	as % of Apr
	<i>1,000 Head</i>	<i>1,000 Head</i>	<i>1,000 Head</i>	<i>Percent</i>	<i>Percent</i>
AZ	269	293	295	110	101
CA	470	495	500	106	101
CO	1,000	970	940	94	97
ID	275	255	250	91	98
IA	370	415	415	112	100
KS	2,270	2,360	2,240	99	95
NE	2,080	2,210	2,100	101	95
NM	101	105	105	104	100
OK	330	330	310	94	94
SD	210	205	200	95	98
TX	2,680	2,640	2,560	96	97
WA	170	170	160	94	94
Oth Sts	310	300	285	92	95
US	10,535	10,748	10,360	98	96

¹ Cattle and calves on feed are animals for slaughter market being fed a ration of grain or other concentrates and are expected to produce a carcass that will grade select or better.

United States Cattle on Feed 1,000+ Capacity Feedlots

Million Head



**Cattle on Feed: Number Placed on Feed, 1,000+ Capacity Feedlots,
by Month, State, and United States 2003-2004**

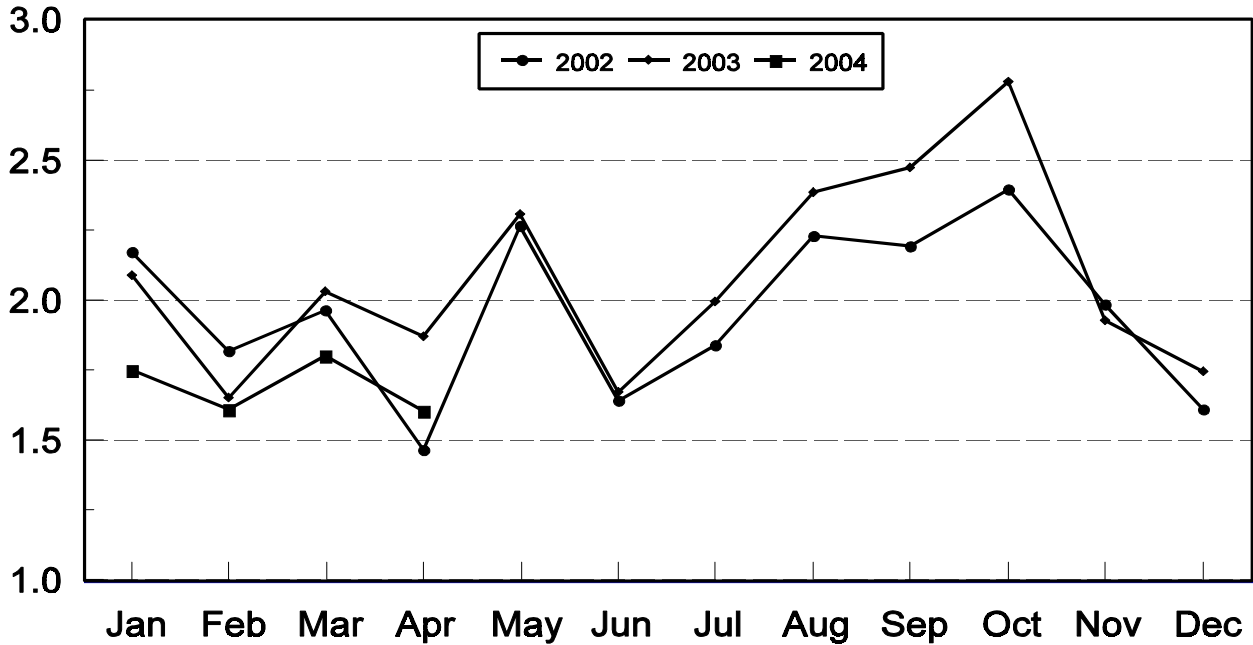
State	During Apr 2003	During Mar 2004	During Apr 2004		
			Number	as % of 2003	as % of Mar
	<i>1,000 Head</i>	<i>1,000 Head</i>	<i>1,000 Head</i>	<i>Percent</i>	<i>Percent</i>
AZ	32	33	31	97	94
CA	61	70	75	123	107
CO	200	150	155	78	103
ID	45	39	45	100	115
IA	57	69	57	100	83
KS	420	460	355	85	77
NE	320	295	320	100	108
NM	21	16	14	67	88
OK	68	74	51	75	69
SD	31	33	26	84	79
TX	540	490	415	77	85
WA	25	29	24	96	83
Oth Sts	50	46	35	70	76
US	1,870	1,804	1,603	86	89

**Cattle on Feed: Number Placed on Feed by Weight Group, 1,000+ Capacity
Feedlots, by Month, State, and United States, 2003-2004**

State	During April									
	Under 600		600-699		700-799		800 Plus		Total	
	2003	2004	2003	2004	2003	2004	2003	2004	2003	2004
	<i>1,000 Head</i>	<i>1,000 Head</i>	<i>1,000 Head</i>	<i>1,000 Head</i>	<i>1,000 Head</i>	<i>1,000 Head</i>	<i>1,000 Head</i>	<i>1,000 Head</i>	<i>1,000 Head</i>	<i>1,000 Head</i>
CO	17	16	36	37	72	62	75	40	200	155
KS	50	45	85	60	145	140	140	110	420	355
NE	39	50	53	52	99	105	129	113	320	320
TX	80	85	90	100	192	175	178	55	540	415
Oth Sts	110	120	60	53	105	85	115	100	390	358
US	296	316	324	302	613	567	637	418	1,870	1,603
	During March									
	Under 600		600-699		700-799		800 Plus		Total	
	2003	2004	2003	2004	2003	2004	2003	2004	2003	2004
	<i>1,000 Head</i>	<i>1,000 Head</i>	<i>1,000 Head</i>	<i>1,000 Head</i>	<i>1,000 Head</i>	<i>1,000 Head</i>	<i>1,000 Head</i>	<i>1,000 Head</i>	<i>1,000 Head</i>	<i>1,000 Head</i>
CO	15	15	26	30	61	60	58	45	160	150
KS	45	55	105	95	200	195	160	115	510	460
NE	22	32	55	47	113	106	130	110	320	295
TX	78	120	128	120	248	180	146	70	600	490
Oth Sts	110	125	75	54	120	100	137	130	442	409
US	270	347	389	346	742	641	631	470	2,032	1,804

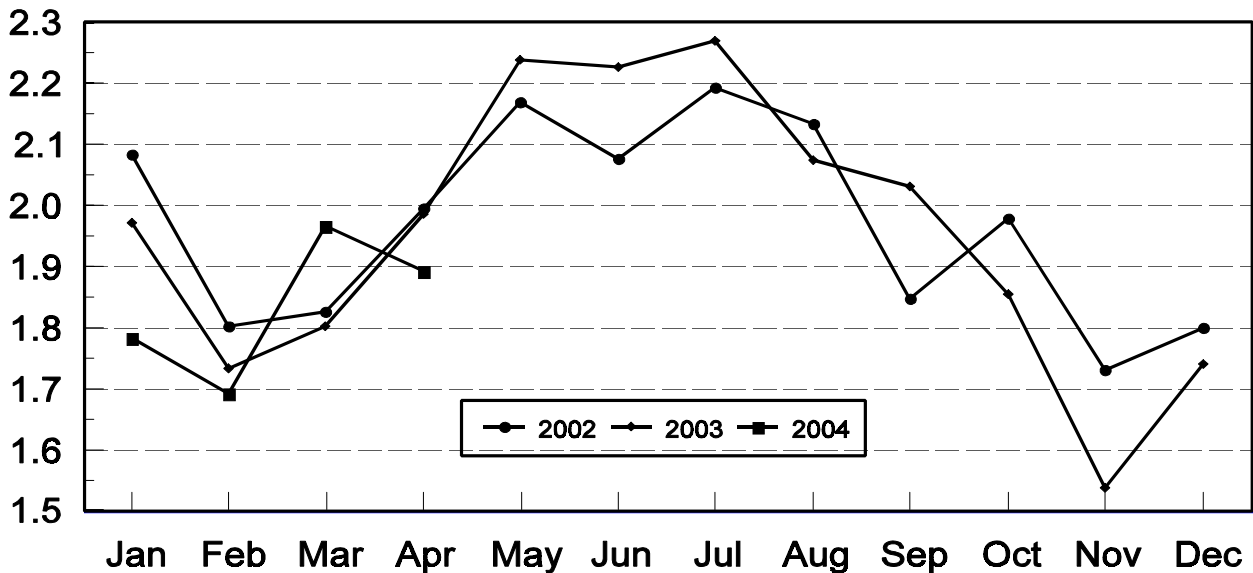
United States Cattle on Feed 1,000+ Capacity Feedlots Number Placed

Million Head



United States Cattle on Feed 1,000+ Capacity Feedlots Number Marketed

Million Head



**Cattle on Feed: Number Marketed, 1,000+ Capacity Feedlots,
by Month, State, and United States 2003-2004**

State	During Apr 2003	During Mar 2004	During Apr 2004		
			Number	as % of 2003	as % of Mar
	<i>1,000 Head</i>	<i>1,000 Head</i>	<i>1,000 Head</i>	<i>Percent</i>	<i>Percent</i>
AZ	40	32	27	68	84
CA	63	71	67	106	94
CO	165	190	175	106	92
ID	49	46	47	96	102
IA	60	56	53	88	95
KS	450	470	440	98	94
NE	420	350	420	100	120
NM	24	21	11	46	52
OK	75	77	68	91	88
SD	29	36	28	97	78
TX	520	530	480	92	91
WA	34	33	33	97	100
Oth Sts	56	54	45	80	83
US	1,985	1,966	1,894	95	96

**Cattle on Feed: Other Disappearance, 1,000+ Capacity Feedlots,
by Month, State, and United States 2003-2004 ¹**

State	During Apr 2003	During Mar 2004	During Apr 2004		
			Number	as % of 2003	as % of Mar
	<i>1,000 Head</i>	<i>1,000 Head</i>	<i>1,000 Head</i>	<i>Percent</i>	<i>Percent</i>
AZ	1	3	2	200	67
CA	3	4	3	100	75
CO	5	10	10	200	100
ID	1	3	3	300	100
IA	2	3	4	200	133
KS	20	20	35	175	175
NE	10	5	10	100	200
NM	1	2	3	300	150
OK	3	2	3	100	150
SD	2	2	3	150	150
TX	10	10	15	150	150
WA	1	1	1	100	100
Oth Sts	4	2	5	125	250
US	63	67	97	154	145

¹ Includes death loss, movement from feedlots to pasture, and shipments to other feedlots for further feeding.

Terms and Definitions of Cattle on Feed Estimates

Cattle on feed are animals being fed a ration of grain, silage, hay and/or protein supplement for slaughter market that are expected to produce a carcass that will grade select or better. It excludes cattle being "backgrounded only" for later sale as feeders or later placement in another feedlot.

Placements are cattle put into a feedlot, fed a ration which will produce a carcass that will grade select or better, and are intended for the slaughter market.

Marketings are cattle shipped out of feedlots to a slaughter market.

Other disappearance includes death loss, movement from feedlots to pasture, and shipments to other feedlots for further feeding.

Reliability of Cattle on Feed Estimates

Survey Procedures: During January and July all known feedlots in the U.S. with capacity of 1,000 or more head are surveyed to provide data for cattle on feed estimates. During the other months, all known feedlots from 17 States are surveyed. The 17 States account for 98 percent of the cattle on feed in feedlots with capacity of 1,000 or more head.

Estimating Procedures: These cattle on feed estimates were prepared by the Agricultural Statistics Board after reviewing recommendations and analysis submitted by each State office. Regional and State survey data were reviewed for reasonableness with each other and with estimates from the previous month when setting the current estimates.

Revision Policy: Revisions to previous estimates are made to improve month to month relationships. Estimates for the previous month are subject to revision in all States each month when current estimates are made. In February, all monthly estimates for the previous year, and the number of feedlots and annual marketings from two years ago are reviewed and subject to revisions. The reviews are primarily based on slaughter data, state check-off or brand data, and any other data that may have been received after the original estimate was made. Estimates will also be reviewed after data from the Census of Agriculture are available. No revisions will be made after that date and estimates become final.

Reliability: Since all 1000+ capacity cattle on feed operators in every State are not included in the monthly survey, survey estimates are subject to sampling variability. Survey results are also subject to non-sampling errors such as omissions, duplications, and mistakes in reporting, recording, and processing the data. The effects of these errors cannot be measured directly. They are minimized through rigid quality controls in the data collection process and through a careful review of all reported data for consistency and reasonableness.

ACCESS TO REPORTS!!

For your convenience, there are several ways to obtain NASS reports, data products, and services:

INTERNET ACCESS

All NASS reports are available free of charge on the worldwide Internet. For access, connect to the Internet and go to the NASS Home Page at: www.usda.gov/nass/. Select "Today's Reports" or Publications and then Reports Calendar or Publications and then Search, by Title or Subject.

E-MAIL SUBSCRIPTION

All NASS reports are available by subscription free of charge direct to your e-mail address. Starting with the NASS Home Page at www.usda.gov/nass/, click on **Publications**, then click on the **Subscribe by E-mail** button which takes you to the page describing e-mail delivery of reports. Finally, click on **Go to the Subscription Page** and follow the instructions.

PRINTED REPORTS OR DATA PRODUCTS

CALL OUR TOLL-FREE ORDER DESK: 800-999-6779 (U.S. and Canada)
Other areas, please call 703-605-6220 FAX: 703-605-6900
(Visa, MasterCard, check, or money order acceptable for payment.)

ASSISTANCE

For **assistance** with general agricultural statistics or further information about NASS or its products or services, contact the **Agricultural Statistics Hotline** at **800-727-9540**, 7:30 a.m. to 4:00 p.m. ET, or e-mail: nass@nass.usda.gov.

The United States Department of Agriculture (USDA) prohibits discrimination in all its programs on the basis of race, color, national origin, gender, religion, age, disability, political beliefs, sexual orientation, and marital or family status. (Not all prohibited bases apply to all programs.) Persons with disabilities who require alternative means for communication of program information (braille, large print, audiotape, etc.) should contact the USDA's TARGET Center at 202-720-2600 (voice and TDD).

To file a complaint of discrimination, write USDA, Director, Office of Civil Rights, Room 326-W, Whitten Building, 1400 Independence Avenue, SW, Washington, D.C., 20250-9410, or call 202-720-5964 (voice or TDD). USDA is an equal opportunity provider and employer.