



Cattle on Feed

Released June 18, 2004, by the National Agricultural Statistics Service (NASS), Agricultural Statistics Board, U.S. Department of Agriculture. For information on *Cattle on Feed* call Mike Miller at (202) 720-3040, office hours 7:30 a.m. to 4:00 p.m. ET.

U.S. Cattle on Feed Up 1 Percent

Cattle and calves on feed for slaughter market in the United States for feedlots with capacity of 1,000 or more head totaled 10.62 million head on June 1, 2004. The inventory was 1 percent above June 1, 2003 but 3 percent below June 1, 2002.

Placements in feedlots during May totaled 2.36 million, 2 percent above 2003 and 4 percent above 2002. Net placements were 2.28 million. During May, placements of cattle and calves weighing less than 600 pounds were 495,000, 600-699 pounds were 486,000, 700-799 pounds were 772,000, and 800 pounds and greater were 610,000.

Marketings of fed cattle during May totaled 2.03 million, 9 percent below 2003 and 7 percent below 2002.

Other disappearance totaled 79,000 during May, 22 percent above 2003 and 3 percent above 2002.

**Cattle on Feed: Number on Feed, Placements, Marketings, and
Other Disappearance, 1,000+ Capacity Feedlots,
United States, June 1, 2002-2004**

Item	Number			2004 as % of	
	2002	2003	2004	2002	2003
	<i>1,000 Head</i>	<i>1,000 Head</i>	<i>1,000 Head</i>	<i>Percent</i>	<i>Percent</i>
On Feed May 1 ¹	10,971	10,535	10,360	94	98
Placed on Feed During May	2,267	2,307	2,363	104	102
Fed Cattle Marketed During May	2,171	2,238	2,028	93	91
Other Disappearance During May ²	77	65	79	103	122
On Feed Jun 1 ¹	10,990	10,539	10,616	97	101

¹ Cattle and calves on feed are animals for slaughter market being fed a ration of grain or other concentrates and are expected to produce a carcass that will grade select or better.

² Includes death loss, movement from feedlots to pasture, and shipments to other feedlots for further feeding.

**Cattle on Feed: Number on Feed, Placements, Marketings, and
Other Disappearance, 1,000+ Capacity Feedlots,
United States, May 1, 2002-2004**

Item	Number			2004 as % of	
	2002	2003	2004	2002	2003
	<i>1,000 Head</i>	<i>1,000 Head</i>	<i>1,000 Head</i>	<i>Percent</i>	<i>Percent</i>
On Feed Apr 1 ¹	11,587	10,713	10,748	93	100
Placed on Feed During Apr	1,463	1,870	*1,598	109	85
Fed Cattle Marketed During Apr	1,996	1,985	*1,889	95	95
Other Disappearance During Apr ²	83	63	97	117	154
On Feed May 1 ¹	10,971	10,535	10,360	94	98

* Revised.

¹ Cattle and calves on feed are animals for slaughter market being fed a ration of grain or other concentrates and are expected to produce a carcass that will grade select or better.

² Includes death loss, movement from feedlots to pasture, and shipments to other feedlots for further feeding.

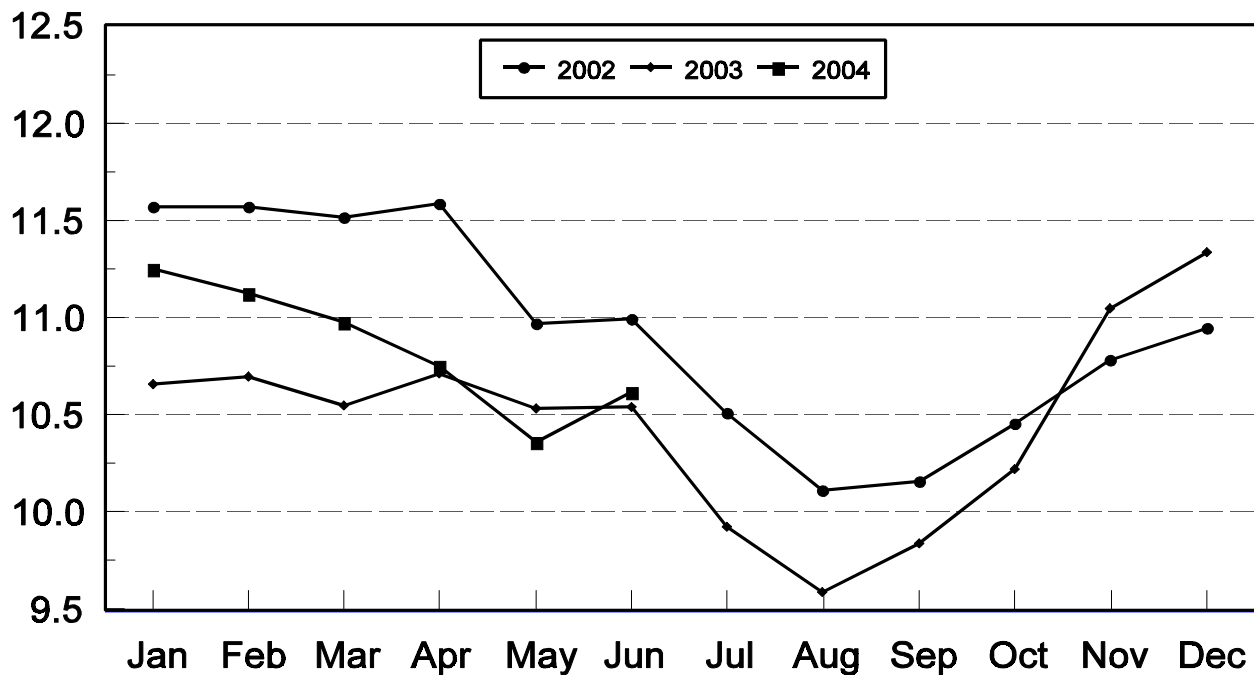
**Cattle on Feed: Number on Feed, 1,000+ Capacity Feedlots,
by Month, State, and United States 2003-2004 ¹**

State	Jun 1, 2003	May 1, 2004	Jun 1, 2004		
			Number	as % of 2003	as % of May
	<i>1,000 Head</i>	<i>1,000 Head</i>	<i>1,000 Head</i>	<i>Percent</i>	<i>Percent</i>
AZ	266	295	294	111	100
CA	485	500	520	107	104
CO	990	940	1,010	102	107
ID	260	250	255	98	102
IA	345	415	400	116	96
KS	2,270	2,240	2,250	99	100
NE	1,930	2,100	2,010	104	96
NM	110	105	119	108	113
OK	360	310	330	92	106
SD	198	200	188	95	94
TX	2,880	2,560	2,810	98	110
WA	160	160	155	97	97
Oth Sts	285	285	275	96	96
US	10,539	10,360	10,616	101	102

¹ Cattle and calves on feed are animals for slaughter market being fed a ration of grain or other concentrates and are expected to produce a carcass that will grade select or better.

United States Cattle on Feed 1,000+ Capacity Feedlots

Million Head



**Cattle on Feed: Number Placed on Feed, 1,000+ Capacity Feedlots,
by Month, State, and United States 2003-2004**

State	During May 2003	During Apr 2004	During May 2004		
			Number	as % of 2003	as % of Apr
	<i>1,000 Head</i>	<i>1,000 Head</i>	<i>1,000 Head</i>	<i>Percent</i>	<i>Percent</i>
AZ	38	31	29	76	94
CA	83	75	91	110	121
CO	205	*150	265	129	177
ID	53	45	74	140	164
IA	48	57	50	104	88
KS	550	355	495	90	139
NE	360	320	390	108	122
NM	30	14	28	93	200
OK	98	51	92	94	180
SD	34	26	28	82	108
TX	730	415	740	101	178
WA	30	24	35	117	146
Oth Sts	48	35	46	96	131
US	2,307	*1,598	2,363	102	148

* Revised.

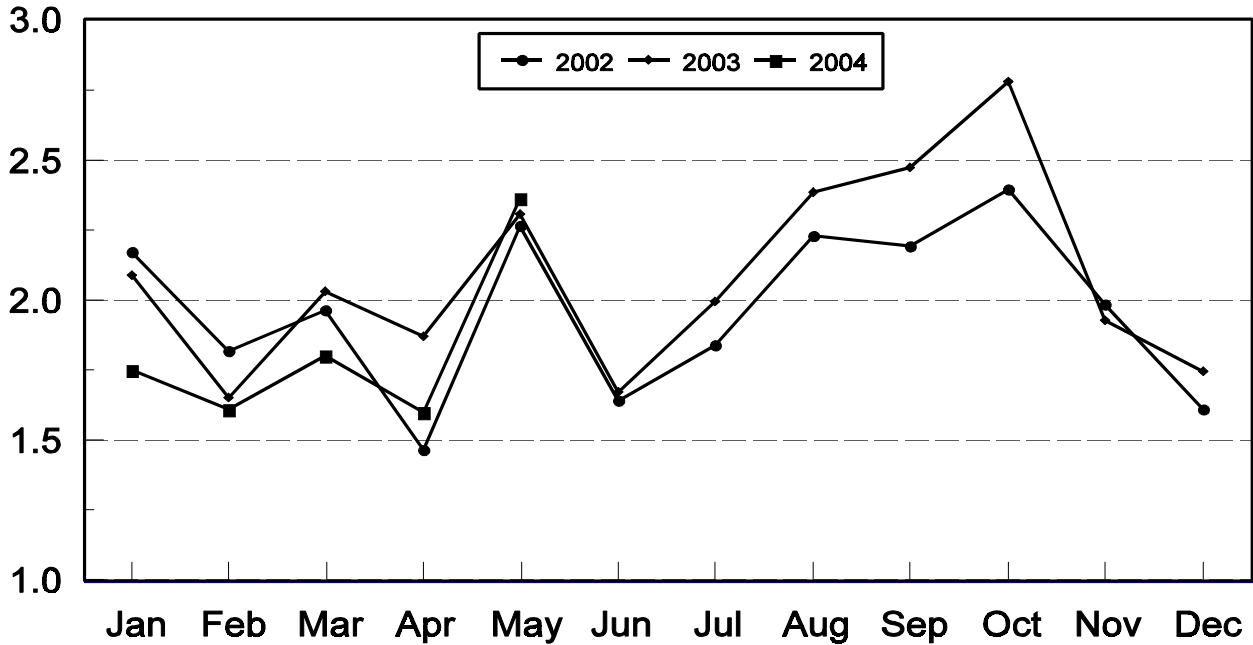
**Cattle on Feed: Number Placed on Feed by Weight Group, 1,000+ Capacity
Feedlots, by Month, State, and United States, 2003-2004**

State	During May									
	Under 600		600-699		700-799		800 Plus		Total	
	2003	2004	2003	2004	2003	2004	2003	2004	2003	2004
	<i>1,000 Head</i>	<i>1,000 Head</i>	<i>1,000 Head</i>	<i>1,000 Head</i>	<i>1,000 Head</i>	<i>1,000 Head</i>	<i>1,000 Head</i>	<i>1,000 Head</i>	<i>1,000 Head</i>	<i>1,000 Head</i>
CO	25	46	32	68	78	103	70	48	205	265
KS	60	65	85	95	205	195	200	140	550	495
NE	38	54	43	60	131	134	148	142	360	390
TX	150	190	150	185	225	225	205	140	730	740
Oth Sts	135	140	57	78	110	115	160	140	462	473
US	408	495	367	486	749	772	783	610	2,307	2,363
	During April									
	Under 600		600-699		700-799		800 Plus		Total	
	2003	2004	2003	2004	2003	2004	2003	2004	2003	2004
	<i>1,000 Head</i>	<i>1,000 Head</i>	<i>1,000 Head</i>	<i>1,000 Head</i>	<i>1,000 Head</i>	<i>1,000 Head</i>	<i>1,000 Head</i>	<i>1,000 Head</i>	<i>1,000 Head</i>	<i>1,000 Head</i>
CO	17	*15	36	37	72	*61	75	*37	200	*150
KS	50	45	85	60	145	140	140	110	420	355
NE	39	50	53	52	99	105	129	113	320	320
TX	80	85	90	100	192	175	178	55	540	415
Oth Sts	110	120	60	53	105	85	115	100	390	358
US	296	*315	324	302	613	*566	637	*415	1,870	*1,598

* Revised.

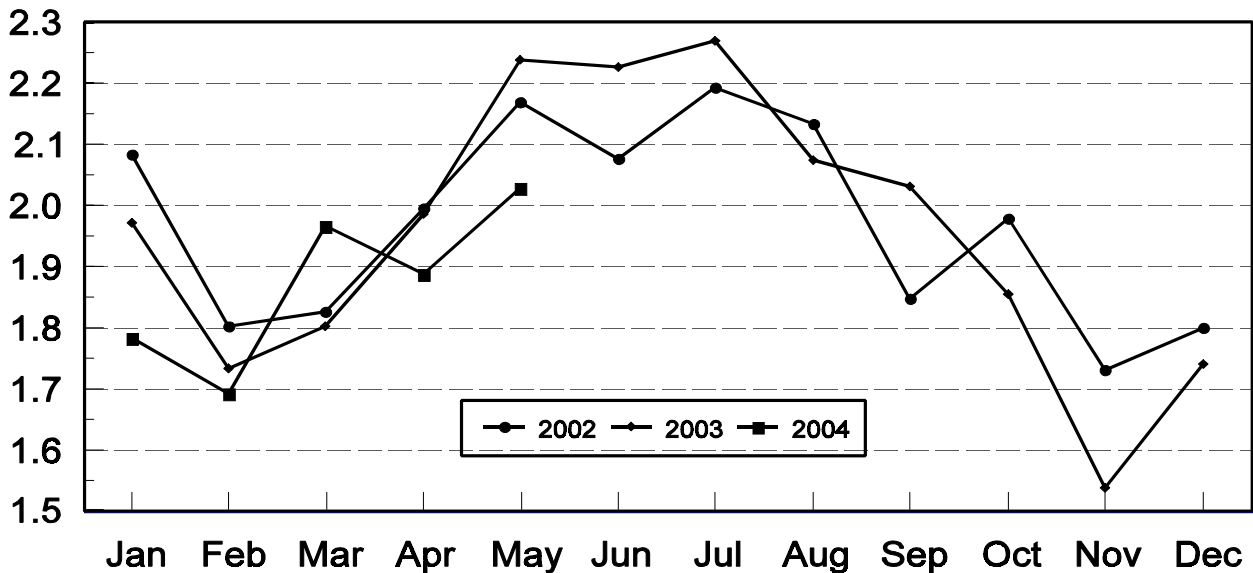
United States Cattle on Feed 1,000+ Capacity Feedlots Number Placed

Million Head



United States Cattle on Feed 1,000+ Capacity Feedlots Number Marketed

Million Head



**Cattle on Feed: Number Marketed, 1,000+ Capacity Feedlots,
by Month, State, and United States 2003-2004**

State	During May 2003	During Apr 2004	During May 2004		
			Number	as % of 2003	as % of Apr
	<i>1,000 Head</i>	<i>1,000 Head</i>	<i>1,000 Head</i>	<i>Percent</i>	<i>Percent</i>
AZ	39	27	28	72	104
CA	66	67	63	95	94
CO	205	*170	180	88	106
ID	67	47	67	100	143
IA	70	53	63	90	119
KS	530	440	465	88	106
NE	500	420	470	94	112
NM	20	11	12	60	109
OK	67	68	70	104	103
SD	44	28	37	84	132
TX	520	480	480	92	100
WA	39	33	39	100	118
Oth Sts	71	45	54	76	120
US	2,238	*1,889	2,028	91	107

* Revised.

**Cattle on Feed: Other Disappearance, 1,000+ Capacity Feedlots,
by Month, State, and United States 2003-2004 ¹**

State	During May 2003	During Apr 2004	During May 2004		
			Number	as % of 2003	as % of Apr
	<i>1,000 Head</i>	<i>1,000 Head</i>	<i>1,000 Head</i>	<i>Percent</i>	<i>Percent</i>
AZ	2	2	2	100	100
CA	2	3	8	400	267
CO	10	10	15	150	150
ID	1	3	2	200	67
IA	3	4	2	67	50
KS	20	35	20	100	57
NE	10	10	10	100	100
NM	1	3	2	200	67
OK	1	3	2	200	67
SD	2	3	3	150	100
TX	10	15	10	100	67
WA	1	1	1	100	100
Oth Sts	2	5	2	100	40
US	65	97	79	122	81

¹ Includes death loss, movement from feedlots to pasture, and shipments to other feedlots for further feeding.

Terms and Definitions of Cattle on Feed Estimates

Cattle on feed are animals being fed a ration of grain, silage, hay and/or protein supplement for slaughter market that are expected to produce a carcass that will grade select or better. It excludes cattle being "backgrounded only" for later sale as feeders or later placement in another feedlot.

Placements are cattle put into a feedlot, fed a ration which will produce a carcass that will grade select or better, and are intended for the slaughter market.

Marketings are cattle shipped out of feedlots to a slaughter market.

Other disappearance includes death loss, movement from feedlots to pasture, and shipments to other feedlots for further feeding.

Reliability of Cattle on Feed Estimates

Survey Procedures: During January and July all known feedlots in the U.S. with capacity of 1,000 or more head are surveyed to provide data for cattle on feed estimates. During the other months, all known feedlots from 17 States are surveyed. The 17 States account for 98 percent of the cattle on feed in feedlots with capacity of 1,000 or more head.

Estimating Procedures: These cattle on feed estimates were prepared by the Agricultural Statistics Board after reviewing recommendations and analysis submitted by each State office. Regional and State survey data were reviewed for reasonableness with each other and with estimates from the previous month when setting the current estimates.

Revision Policy: Revisions to previous estimates are made to improve month to month relationships. Estimates for the previous month are subject to revision in all States each month when current estimates are made. In February, all monthly estimates for the previous year, and the number of feedlots and annual marketings from two years ago are reviewed and subject to revisions. The reviews are primarily based on slaughter data, state check-off or brand data, and any other data that may have been received after the original estimate was made. Estimates will also be reviewed after data from the Census of Agriculture are available. No revisions will be made after that date and estimates become final.

Reliability: Since all 1000+ capacity cattle on feed operators in every State are not included in the monthly survey, survey estimates are subject to sampling variability. Survey results are also subject to non-sampling errors such as omissions, duplications, and mistakes in reporting, recording, and processing the data. The effects of these errors cannot be measured directly. They are minimized through rigid quality controls in the data collection process and through a careful review of all reported data for consistency and reasonableness.

ACCESS TO REPORTS!!

For your convenience, there are several ways to obtain NASS reports, data products, and services:

INTERNET ACCESS

All NASS reports are available free of charge on the worldwide Internet. For access, connect to the Internet and go to the NASS Home Page at: www.usda.gov/nass/. Select "Today's Reports" or Publications and then Reports Calendar or Publications and then Search, by Title or Subject.

E-MAIL SUBSCRIPTION

All NASS reports are available by subscription free of charge direct to your e-mail address. Starting with the NASS Home Page at www.usda.gov/nass/, click on **Publications**, then click on the **Subscribe by E-mail** button which takes you to the page describing e-mail delivery of reports. Finally, click on **Go to the Subscription Page** and follow the instructions.

PRINTED REPORTS OR DATA PRODUCTS

CALL OUR TOLL-FREE ORDER DESK: 800-999-6779 (U.S. and Canada)
Other areas, please call 703-605-6220 FAX: 703-605-6900
(Visa, MasterCard, check, or money order acceptable for payment.)

ASSISTANCE

For **assistance** with general agricultural statistics or further information about NASS or its products or services, contact the **Agricultural Statistics Hotline** at **800-727-9540**, 7:30 a.m. to 4:00 p.m. ET, or e-mail: nass@nass.usda.gov.

The United States Department of Agriculture (USDA) prohibits discrimination in all its programs on the basis of race, color, national origin, gender, religion, age, disability, political beliefs, sexual orientation, and marital or family status. (Not all prohibited bases apply to all programs.) Persons with disabilities who require alternative means for communication of program information (braille, large print, audiotape, etc.) should contact the USDA's TARGET Center at 202-720-2600 (voice and TDD).

To file a complaint of discrimination, write USDA, Director, Office of Civil Rights, Room 326-W, Whitten Building, 1400 Independence Avenue, SW, Washington, D.C., 20250-9410, or call 202-720-5964 (voice or TDD). USDA is an equal opportunity provider and employer.