



Cattle on Feed

Released July 23, 2004, by the National Agricultural Statistics Service (NASS), Agricultural Statistics Board, U.S. Department of Agriculture. For information on *Cattle on Feed* call Mike Miller at (202) 720-3040, office hours 7:30 a.m. to 4:00 p.m. ET.

U.S. Cattle on Feed Up 2 Percent

Cattle and calves on feed for slaughter market in the United States for feedlots with capacity of 1,000 or more head totaled 10.12 million head on July 1, 2004. The inventory was 2 percent above July 1, 2003 but 4 percent below July 1, 2002. The inventory included 6.37 million steers and steer calves, up 4 percent from the previous year. This group accounted for 63 percent of the total inventory. Heifers and heifer calves accounted for 3.70 million head, down 1 percent from 2003.

Placements in feedlots during June totaled 1.64 million, 2 percent below 2003 and down slightly from 2002. Net placements were 1.57 million. During June, placements of cattle and calves weighing less than 600 pounds were 460,000, 600-699 pounds were 356,000, 700-799 pounds were 448,000, and 800 pounds and greater were 375,000.

Marketings of fed cattle during June totaled 2.08 million, 7 percent below 2003 but up slightly from 2002.

Other disappearance totaled 70,000 during June, 15 percent above 2003 and 37 percent above 2002.

U.S. All Cattle on Feed Down Slightly

Cattle on feed July 1, 2004, from all feedlots in the United States, totaled 11.8 million, down slightly from July 1, 2003 and 6 percent below July 1, 2002. Cattle on feed in feedlots with 1,000 or more head accounted for 86 percent of the total cattle on feed on July 1, 2004, up from 84 percent on July 1, 2003.

**Cattle on Feed: Number on Feed, Placements, Marketings, and
Other Disappearance, 1,000+ Capacity Feedlots,
United States, July 1, 2002-2004**

Item	Number			2004 as % of	
	2002	2003	2004	2002	2003
	<i>1,000 Head</i>	<i>1,000 Head</i>	<i>1,000 Head</i>	<i>Percent</i>	<i>Percent</i>
On Feed Jun 1 ¹	10,990	10,539	*10,625	97	101
Placed on Feed During Jun	1,644	1,672	1,639	100	98
Fed Cattle Marketed During Jun	2,076	2,227	2,077	100	93
Other Disappearance During Jun ²	51	61	70	137	115
On Feed Jul 1 ¹	10,507	9,923	10,117	96	102

* Revised.

¹ Cattle and calves on feed are animals for slaughter market being fed a ration of grain or other concentrates and are expected to produce a carcass that will grade select or better.

² Includes death loss, movement from feedlots to pasture, and shipments to other feedlots for further feeding.

**Cattle on Feed: Number on Feed, Placements, Marketings, and
Other Disappearance, 1,000+ Capacity Feedlots,
United States, June 1, 2002-2004**

Item	Number			2004 as % of	
	2002	2003	2004	2002	2003
	<i>1,000 Head</i>	<i>1,000 Head</i>	<i>1,000 Head</i>	<i>Percent</i>	<i>Percent</i>
On Feed May 1 ¹	10,971	10,535	10,360	94	98
Placed on Feed During May	2,267	2,307	*2,367	104	103
Fed Cattle Marketed During May	2,171	2,238	*2,023	93	90
Other Disappearance During May ²	77	65	79	103	122
On Feed Jun 1 ¹	10,990	10,539	*10,625	97	101

* Revised.

¹ Cattle and calves on feed are animals for slaughter market being fed a ration of grain or other concentrates and are expected to produce a carcass that will grade select or better.

² Includes death loss, movement from feedlots to pasture, and shipments to other feedlots for further feeding.

**Cattle on Feed: Number on Feed by Class, 1,000+ Capacity Feedlots,
United States, July 1, 2002-2004**

Item	Number			2004 as % of	
	2002	2003	2004	2002	2003
	<i>1,000 Head</i>	<i>1,000 Head</i>	<i>1,000 Head</i>	<i>Percent</i>	<i>Percent</i>
Class on Feed Jul 1					
Steers and Steer Calves	6,467	6,111	6,370	99	104
Heifers and Heifer Calves	3,977	3,751	3,695	93	99
Cows and Bulls	63	61	52	83	85

**Cattle on Feed: Number on Feed, 1,000+ Capacity Feedlots,
by Month, State, and United States 2003-2004 ¹**

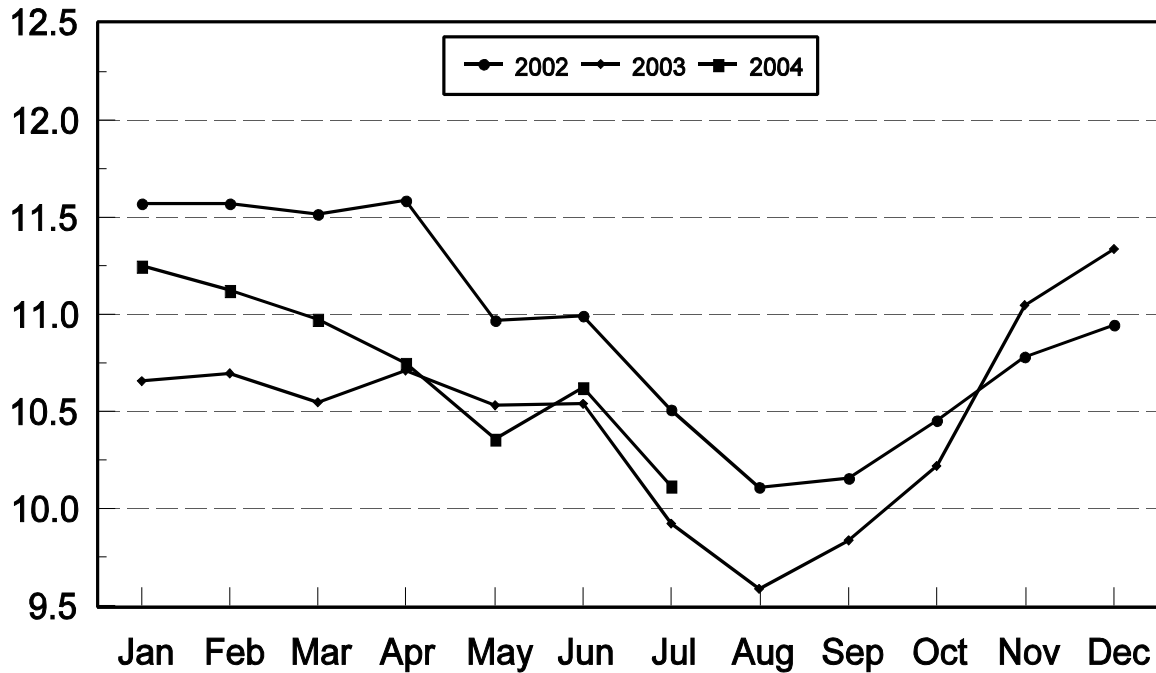
State	Jul 1, 2003	Jun 1, 2004	Jul 1, 2004		
			Number	as % of 2003	as % of Jun
	<i>1,000 Head</i>	<i>1,000 Head</i>	<i>1,000 Head</i>	<i>Percent</i>	<i>Percent</i>
AZ	266	294	295	111	100
CA	490	520	520	106	100
CO	890	1,010	940	106	93
ID	255	255	240	94	94
IA	310	400	390	126	98
KS	2,160	2,250	2,090	97	93
NE	1,690	2,010	1,850	109	92
NM	115	*118	124	108	105
OK	350	330	315	90	95
SD	167	188	173	104	92
TX	2,820	2,810	2,760	98	98
WA	160	155	150	94	97
Oth Sts	250	*285	270	108	95
US	9,923	*10,625	10,117	102	95

* Revised.

¹ Cattle and calves on feed are animals for slaughter market being fed a ration of grain or other concentrates and are expected to produce a carcass that will grade select or better.

United States Cattle on Feed 1,000+ Capacity Feedlots

Million Head



**Cattle on Feed: Number Placed on Feed, 1,000+ Capacity Feedlots,
by Month, State, and United States 2003-2004**

State	During Jun 2003	During May 2004	During Jun 2004		
			Number	as % of 2003	as % of May
	<i>1,000 Head</i>	<i>1,000 Head</i>	<i>1,000 Head</i>	<i>Percent</i>	<i>Percent</i>
AZ	34	29	31	91	107
CA	73	91	69	95	76
CO	125	*270	140	112	52
ID	63	74	47	75	64
IA	34	50	50	147	100
KS	415	495	400	96	81
NE	270	390	285	106	73
NM	21	*27	26	124	96
OK	52	92	52	100	57
SD	27	28	20	74	71
TX	470	740	455	97	61
WA	39	35	34	87	97
Oth Sts	49	46	30	61	65
US	1,672	*2,367	1,639	98	69

* Revised.

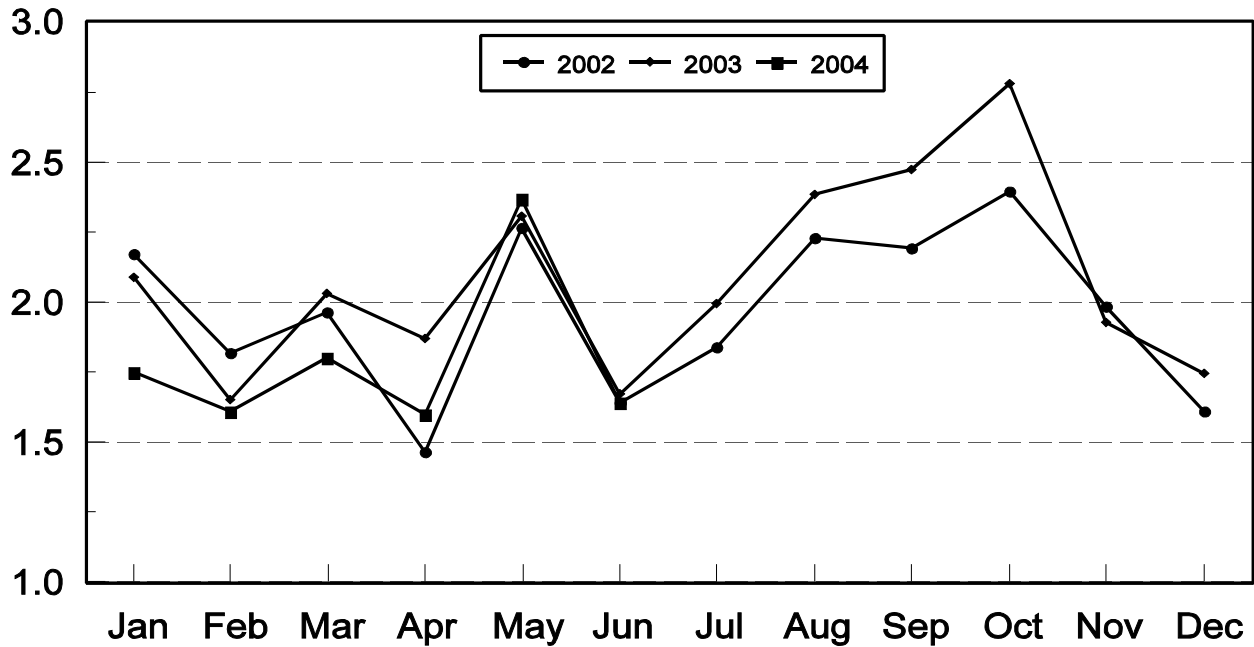
**Cattle on Feed: Number Placed on Feed by Weight Group, 1,000+ Capacity
Feedlots, by Month, State, and United States, 2003-2004**

State	During June									
	Under 600		600-699		700-799		800 Plus		Total	
	2003	2004	2003	2004	2003	2004	2003	2004	2003	2004
	<i>1,000 Head</i>	<i>1,000 Head</i>	<i>1,000 Head</i>	<i>1,000 Head</i>	<i>1,000 Head</i>	<i>1,000 Head</i>	<i>1,000 Head</i>	<i>1,000 Head</i>	<i>1,000 Head</i>	<i>1,000 Head</i>
CO	24	30	36	40	35	40	30	30	125	140
KS	80	95	95	100	135	120	105	85	415	400
NE	33	55	50	47	75	73	112	110	270	285
TX	120	150	120	115	145	140	85	50	470	455
Oth Sts	115	130	57	54	90	75	130	100	392	359
US	372	460	358	356	480	448	462	375	1,672	1,639
	During May									
	Under 600		600-699		700-799		800 Plus		Total	
	2003	2004	2003	2004	2003	2004	2003	2004	2003	2004
	<i>1,000 Head</i>	<i>1,000 Head</i>	<i>1,000 Head</i>	<i>1,000 Head</i>	<i>1,000 Head</i>	<i>1,000 Head</i>	<i>1,000 Head</i>	<i>1,000 Head</i>	<i>1,000 Head</i>	<i>1,000 Head</i>
CO	25	46	32	*73	78	103	70	48	205	*270
KS	60	65	85	95	205	195	200	140	550	495
NE	38	54	43	60	131	134	148	142	360	390
TX	150	190	150	185	225	225	205	140	730	740
Oth Sts	135	140	57	*77	110	115	160	140	462	*472
US	408	495	367	*490	749	772	783	610	2,307	*2,367

* Revised.

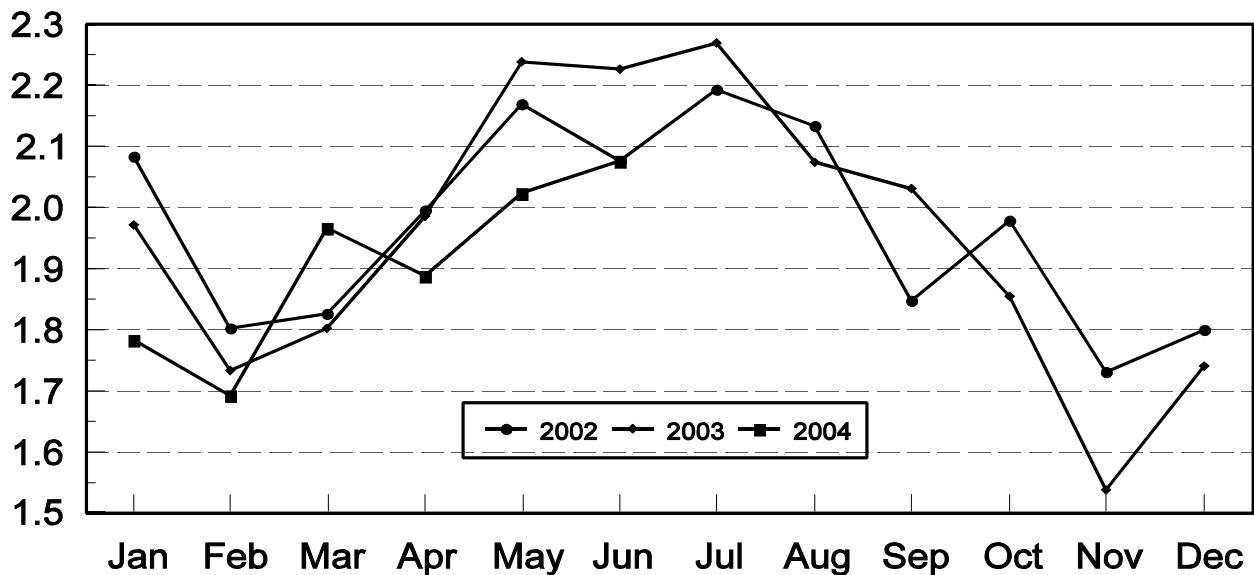
United States Cattle on Feed 1,000+ Capacity Feedlots Number Placed

Million Head



United States Cattle on Feed 1,000+ Capacity Feedlots Number Marketed

Million Head



**Cattle on Feed: Number Marketed, 1,000+ Capacity Feedlots,
by Month, State, and United States 2003-2004**

State	During Jun 2003	During May 2004	During Jun 2004		
			Number	as % of 2003	as % of May
	<i>1,000 Head</i>	<i>1,000 Head</i>	<i>1,000 Head</i>	<i>Percent</i>	<i>Percent</i>
AZ	32	28	28	88	100
CA	63	63	62	98	98
CO	220	*185	200	91	108
ID	67	67	60	90	90
IA	68	63	59	87	94
KS	510	465	540	106	116
NE	500	470	435	87	93
NM	13	12	19	146	158
OK	59	70	64	108	91
SD	55	37	34	62	92
TX	520	480	495	95	103
WA	38	39	38	100	97
Oth Sts	82	*44	43	52	98
US	2,227	*2,023	2,077	93	103

* Revised.

**Cattle on Feed: Other Disappearance, 1,000+ Capacity Feedlots,
by Month, State, and United States 2003-2004 ¹**

State	During Jun 2003	During May 2004	During Jun 2004		
			Number	as % of 2003	as % of May
	<i>1,000 Head</i>	<i>1,000 Head</i>	<i>1,000 Head</i>	<i>Percent</i>	<i>Percent</i>
AZ	2	2	2	100	100
CA	5	8	7	140	88
CO	5	15	10	200	67
ID	1	2	2	200	100
IA	1	2	1	100	50
KS	15	20	20	133	100
NE	10	10	10	100	100
NM	3	2	1	33	50
OK	3	2	3	100	150
SD	3	3	1	33	33
TX	10	10	10	100	100
WA	1	1	1	100	100
Oth Sts	2	2	2	100	100
US	61	79	70	115	89

¹ Includes death loss, movement from feedlots to pasture, and shipments to other feedlots for further feeding.

**Cattle on Feed: Number on Feed by Class, 1,000+ Capacity Feedlots,
by Quarter, State, and United States, 2003-2004**

State	Steers & Steer Calves			Heifers & Heifer Calves			Cows and Bulls		
	Jul 1, 2003	Apr 1, 2004	Jul 1, 2004	Jul 1, 2003	Apr 1, 2004	Jul 1, 2004	Jul 1, 2003	Apr 1, 2004	Jul 1, 2004
	<i>1,000 Head</i>	<i>1,000 Head</i>	<i>1,000 Head</i>	<i>1,000 Head</i>	<i>1,000 Head</i>	<i>1,000 Head</i>	<i>1,000 Head</i>	<i>1,000 Head</i>	<i>1,000 Head</i>
AZ	262	289	292	4	4	3	0	0	0
CA	450	465	480	40	30	40	0	0	0
CO	510	575	560	375	390	375	5	5	5
ID	166	160	150	88	95	90	1	0	0
IA	200	260	260	109	154	129	1	1	1
KS	1,150	1,230	1,130	995	1,110	950	15	20	10
NE	950	1,300	1,100	725	890	740	15	20	10
NM	58	49	60	57	56	64	0	0	0
OK	220	200	205	129	129	109	1	1	1
SD	80	112	88	71	81	68	16	12	17
TX	1,770	1,670	1,750	1,048	967	1,008	2	3	2
WA	100	105	90	60	65	59	0	0	1
Oth Sts	195	205	205	50	90	60	5	5	5
US	6,111	6,620	6,370	3,751	4,061	3,695	61	67	52

**Cattle on Feed: Total Number on Feed, United States,
July 1, 2002-2004 ¹**

State	Jul 1, 2002	Jul 1, 2003	July 1, 2004		
			Number	as % of 2002	as % of 2003
	<i>1,000 Head</i>	<i>1,000 Head</i>	<i>1,000 Head</i>	<i>Percent</i>	<i>Percent</i>
US	12,500	11,810	11,800	94	100

¹ Cattle and calves on feed are animals for slaughter market being fed a ration of grain or other concentrates and are expected to produce a carcass that will grade select or better.

Terms and Definitions of Cattle on Feed Estimates

Cattle on feed are animals being fed a ration of grain, silage, hay and/or protein supplement for slaughter market that are expected to produce a carcass that will grade select or better. It excludes cattle being "backgrounded only" for later sale as feeders or later placement in another feedlot.

Placements are cattle put into a feedlot, fed a ration which will produce a carcass that will grade select or better, and are intended for the slaughter market.

Marketings are cattle shipped out of feedlots to a slaughter market.

Other disappearance includes death loss, movement from feedlots to pasture, and shipments to other feedlots for further feeding.

Reliability of Cattle on Feed Estimates

Survey Procedures: During January and July all known feedlots in the U.S. with capacity of 1,000 or more head are surveyed to provide data for cattle on feed estimates. During the other months, all known feedlots from 17 States are surveyed. The 17 States account for 98 percent of the cattle on feed in feedlots with capacity of 1,000 or more head.

Estimating Procedures: These cattle on feed estimates were prepared by the Agricultural Statistics Board after reviewing recommendations and analysis submitted by each State office. Regional and State survey data were reviewed for reasonableness with each other and with estimates from the previous month when setting the current estimates.

Revision Policy: Revisions to previous estimates are made to improve month to month relationships. Estimates for the previous month are subject to revision in all States each month when current estimates are made. In February, all monthly estimates for the previous year, and the number of feedlots and annual marketings from two years ago are reviewed and subject to revisions. The reviews are primarily based on slaughter data, state check-off or brand data, and any other data that may have been received after the original estimate was made. Estimates will also be reviewed after data from the Census of Agriculture are available. No revisions will be made after that date and estimates become final.

Reliability: Since all 1000+ capacity cattle on feed operators in every State are not included in the monthly survey, survey estimates are subject to sampling variability. Survey results are also subject to non-sampling errors such as omissions, duplications, and mistakes in reporting, recording, and processing the data. The effects of these errors cannot be measured directly. They are minimized through rigid quality controls in the data collection process and through a careful review of all reported data for consistency and reasonableness.

ACCESS TO REPORTS!!

For your convenience, there are several ways to obtain NASS reports, data products, and services:

INTERNET ACCESS

All NASS reports are available free of charge on the worldwide Internet. For access, connect to the Internet and go to the NASS Home Page at: www.usda.gov/nass/. Select "Today's Reports" or Publications and then Reports Calendar or Publications and then Search, by Title or Subject.

E-MAIL SUBSCRIPTION

All NASS reports are available by subscription free of charge direct to your e-mail address. Starting with the NASS Home Page at www.usda.gov/nass/, click on **Publications**, then click on the **Subscribe by E-mail** button which takes you to the page describing e-mail delivery of reports. Finally, click on **Go to the Subscription Page** and follow the instructions.

PRINTED REPORTS OR DATA PRODUCTS

CALL OUR TOLL-FREE ORDER DESK: 800-999-6779 (U.S. and Canada)
Other areas, please call 703-605-6220 FAX: 703-605-6900
(Visa, MasterCard, check, or money order acceptable for payment.)

ASSISTANCE

For **assistance** with general agricultural statistics or further information about NASS or its products or services, contact the **Agricultural Statistics Hotline** at **800-727-9540**, 7:30 a.m. to 4:00 p.m. ET, or e-mail: nass@nass.usda.gov.

The United States Department of Agriculture (USDA) prohibits discrimination in all its programs on the basis of race, color, national origin, gender, religion, age, disability, political beliefs, sexual orientation, and marital or family status. (Not all prohibited bases apply to all programs.) Persons with disabilities who require alternative means for communication of program information (braille, large print, audiotape, etc.) should contact the USDA's TARGET Center at 202-720-2600 (voice and TDD).

To file a complaint of discrimination, write USDA, Director, Office of Civil Rights, Room 326-W, Whitten Building, 1400 Independence Avenue, SW, Washington, D.C., 20250-9410, or call 202-720-5964 (voice or TDD). USDA is an equal opportunity provider and employer.