



Cattle on Feed

Released August 20, 2004, by the National Agricultural Statistics Service (NASS), Agricultural Statistics Board, U.S. Department of Agriculture. For information on *Cattle on Feed* call Mike Miller at (202) 720-3040, office hours 7:30 a.m. to 4:00 p.m. ET.

U.S. Cattle on Feed Up 3 Percent

Cattle and calves on feed for slaughter market in the United States for feedlots with capacity of 1,000 or more head totaled 9.85 million head on August 1, 2004. The inventory was 3 percent above August 1, 2003 but 3 percent below August 1, 2002.

Placements in feedlots during July totaled 1.72 million, 14 percent below 2003 and 7 percent below 2002. Net placements were 1.66 million. During July, placements of cattle and calves weighing less than 600 pounds were 440,000, 600-699 pounds were 325,000, 700-799 pounds were 499,000, and 800 pounds and greater were 456,000.

Marketings of fed cattle during July totaled 1.93 million, 15 percent below 2003 and 12 percent below 2002.

Other disappearance totaled 58,000 during July, 3 percent below 2003 but 29 percent above 2002.

**Cattle on Feed: Number on Feed, Placements, Marketings, and
Other Disappearance, 1,000+ Capacity Feedlots,
United States, August 1, 2002-2004**

Item	Number			2004 as % of	
	2002	2003	2004	2002	2003
	<i>1,000 Head</i>	<i>1,000 Head</i>	<i>1,000 Head</i>	<i>Percent</i>	<i>Percent</i>
On Feed Jul 1 ¹	10,507	9,923	10,117	96	102
Placed on Feed During Jul	1,840	1,997	1,720	93	86
Fed Cattle Marketed During Jul	2,193	2,270	1,926	88	85
Other Disappearance During Jul ²	45	60	58	129	97
On Feed Aug 1 ¹	10,109	9,590	9,853	97	103

¹ Cattle and calves on feed are animals for slaughter market being fed a ration of grain or other concentrates and are expected to produce a carcass that will grade select or better.

² Includes death loss, movement from feedlots to pasture, and shipments to other feedlots for further feeding.

**Cattle on Feed: Number on Feed, Placements, Marketings, and
Other Disappearance, 1,000+ Capacity Feedlots,
United States, July 1, 2002-2004**

Item	Number			2004 as % of	
	2002	2003	2004	2002	2003
	<i>1,000 Head</i>	<i>1,000 Head</i>	<i>1,000 Head</i>	<i>Percent</i>	<i>Percent</i>
On Feed Jun 1 ¹	10,990	10,539	10,625	97	101
Placed on Feed During Jun	1,644	1,672	*1,644	100	98
Fed Cattle Marketed During Jun	2,076	2,227	*2,082	100	93
Other Disappearance During Jun ²	51	61	70	137	115
On Feed Jul 1 ¹	10,507	9,923	10,117	96	102

* Revised.

¹ Cattle and calves on feed are animals for slaughter market being fed a ration of grain or other concentrates and are expected to produce a carcass that will grade select or better.

² Includes death loss, movement from feedlots to pasture, and shipments to other feedlots for further feeding.

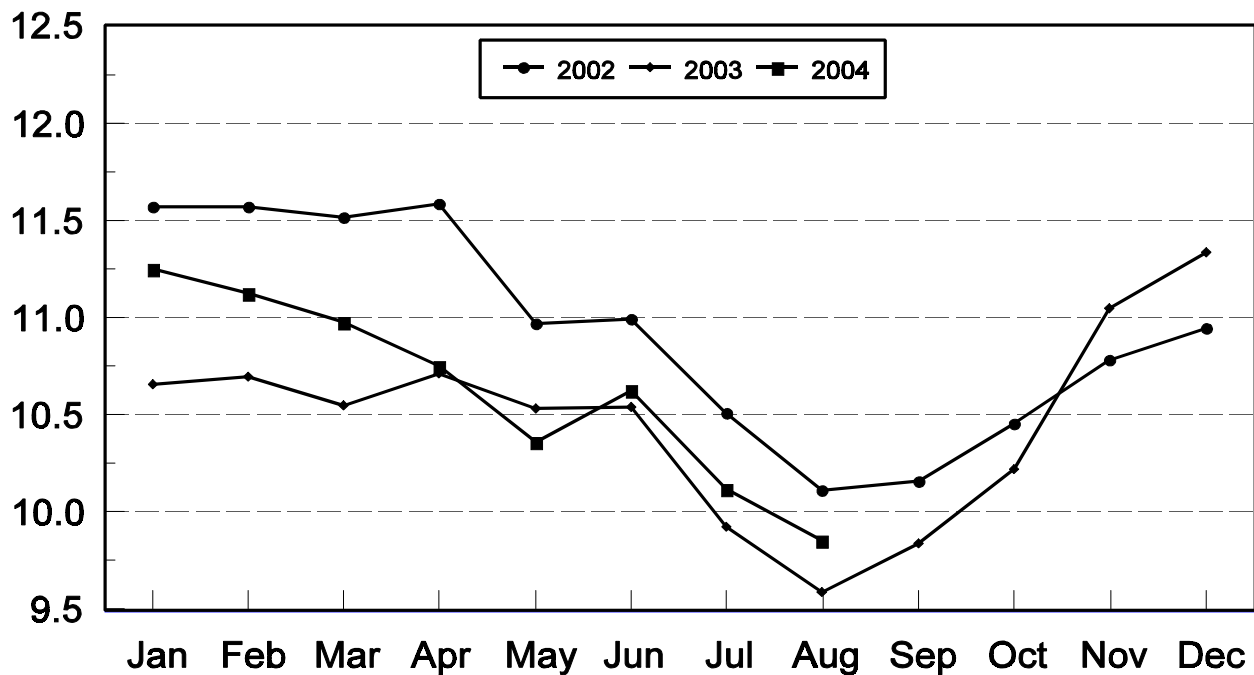
**Cattle on Feed: Number on Feed, 1,000+ Capacity Feedlots,
by Month, State, and United States 2003-2004 ¹**

State	Aug 1, 2003	Jul 1, 2004	Aug 1, 2004		
			Number	as % of 2003	as % of Jul
	<i>1,000 Head</i>	<i>1,000 Head</i>	<i>1,000 Head</i>	<i>Percent</i>	<i>Percent</i>
AZ	271	295	294	108	100
CA	485	520	520	107	100
CO	860	940	880	102	94
ID	240	240	235	98	98
IA	295	390	380	129	97
KS	2,180	2,090	2,120	97	101
NE	1,570	1,850	1,750	111	95
NM	116	124	127	109	102
OK	335	315	315	94	100
SD	148	173	157	106	91
TX	2,690	2,760	2,670	99	97
WA	170	150	150	88	100
Oth Sts	230	270	255	111	94
US	9,590	10,117	9,853	103	97

¹ Cattle and calves on feed are animals for slaughter market being fed a ration of grain or other concentrates and are expected to produce a carcass that will grade select or better.

United States Cattle on Feed 1,000+ Capacity Feedlots

Million Head



**Cattle on Feed: Number Placed on Feed, 1,000+ Capacity Feedlots,
by Month, State, and United States 2003-2004**

State	During Jul 2003	During Jun 2004	During Jul 2004		
			Number	as % of 2003	as % of Jun
	<i>1,000 Head</i>	<i>1,000 Head</i>	<i>1,000 Head</i>	<i>Percent</i>	<i>Percent</i>
AZ	32	31	32	100	103
CA	66	69	65	98	94
CO	175	*145	150	86	103
ID	56	47	43	77	91
IA	56	50	52	93	104
KS	570	400	520	91	130
NE	350	285	310	89	109
NM	21	26	22	105	85
OK	75	52	61	81	117
SD	21	20	12	57	60
TX	475	455	395	83	87
WA	50	34	29	58	85
Oth Sts	50	30	29	58	97
US	1,997	*1,644	1,720	86	105

* Revised.

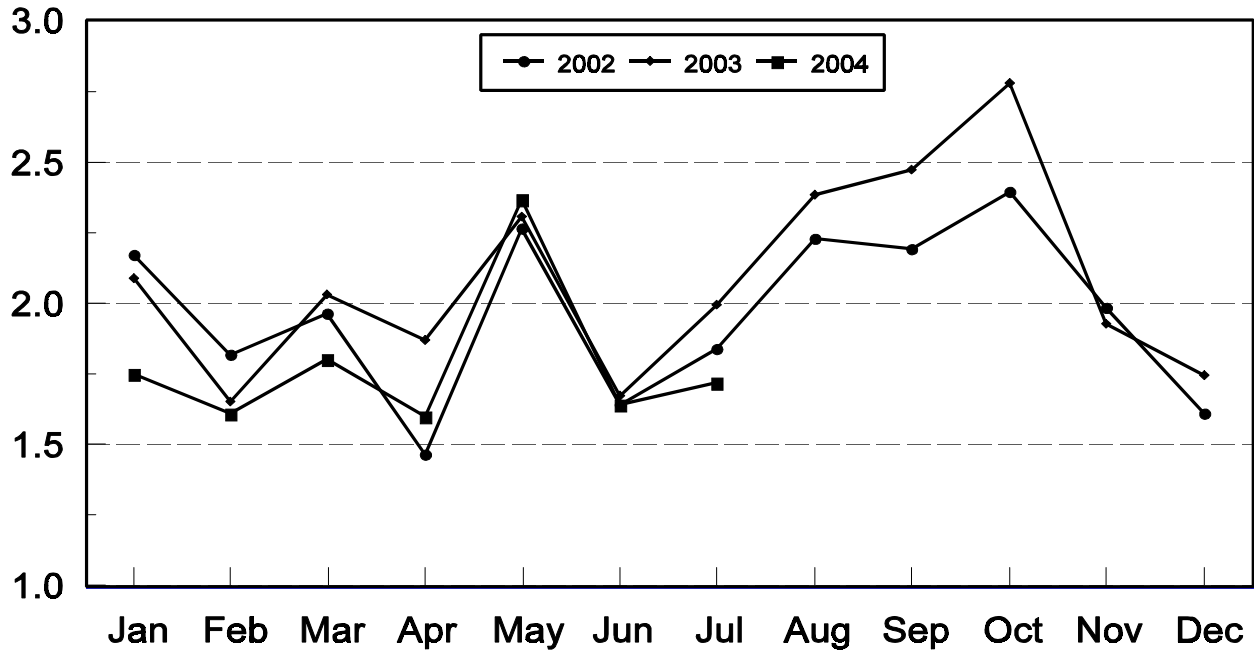
**Cattle on Feed: Number Placed on Feed by Weight Group, 1,000+ Capacity
Feedlots, by Month, State, and United States, 2003-2004**

State	During July									
	Under 600		600-699		700-799		800 Plus		Total	
	2003	2004	2003	2004	2003	2004	2003	2004	2003	2004
	<i>1,000 Head</i>	<i>1,000 Head</i>	<i>1,000 Head</i>	<i>1,000 Head</i>	<i>1,000 Head</i>	<i>1,000 Head</i>	<i>1,000 Head</i>	<i>1,000 Head</i>	<i>1,000 Head</i>	<i>1,000 Head</i>
CO	24	30	41	30	53	50	57	40	175	150
KS	85	90	125	105	210	190	150	135	570	520
NE	37	40	76	55	105	84	132	131	350	310
TX	155	155	115	90	125	100	80	50	475	395
Oth Sts	125	125	57	45	100	75	145	100	427	345
US	426	440	414	325	593	499	564	456	1,997	1,720
	During June									
	Under 600		600-699		700-799		800 Plus		Total	
	2003	2004	2003	2004	2003	2004	2003	2004	2003	2004
	<i>1,000 Head</i>	<i>1,000 Head</i>	<i>1,000 Head</i>	<i>1,000 Head</i>	<i>1,000 Head</i>	<i>1,000 Head</i>	<i>1,000 Head</i>	<i>1,000 Head</i>	<i>1,000 Head</i>	<i>1,000 Head</i>
CO	24	30	36	40	35	*45	30	30	125	*145
KS	80	95	95	100	135	120	105	85	415	400
NE	33	55	50	47	75	73	112	110	270	285
TX	120	150	120	115	145	140	85	50	470	455
Oth Sts	115	130	57	54	90	75	130	100	392	359
US	372	460	358	356	480	*453	462	375	1,672	*1,644

* Revised.

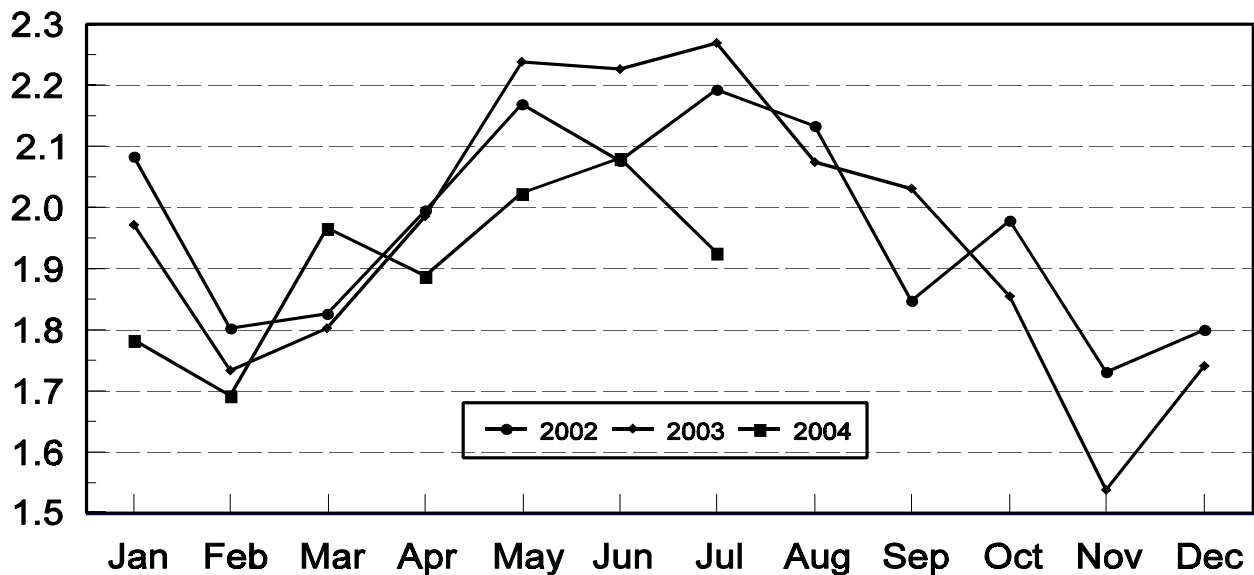
United States Cattle on Feed 1,000+ Capacity Feedlots Number Placed

Million Head



United States Cattle on Feed 1,000+ Capacity Feedlots Number Marketed

Million Head



**Cattle on Feed: Number Marketed, 1,000+ Capacity Feedlots,
by Month, State, and United States 2003-2004**

State	During Jul 2003	During Jun 2004	During Jul 2004		
			Number	as % of 2003	as % of Jun
	<i>1,000 Head</i>	<i>1,000 Head</i>	<i>1,000 Head</i>	<i>Percent</i>	<i>Percent</i>
AZ	26	28	31	119	111
CA	67	62	60	90	97
CO	200	*205	205	103	100
ID	70	60	47	67	78
IA	70	59	60	86	102
KS	540	540	475	88	88
NE	460	435	405	88	93
NM	17	19	17	100	89
OK	85	64	59	69	92
SD	38	34	26	68	76
TX	590	495	470	80	95
WA	39	38	28	72	74
Oth Sts	68	43	43	63	100
US	2,270	*2,082	1,926	85	93

* Revised.

**Cattle on Feed: Other Disappearance, 1,000+ Capacity Feedlots,
by Month, State, and United States 2003-2004 ¹**

State	During Jul 2003	During Jun 2004	During Jul 2004		
			Number	as % of 2003	as % of Jun
	<i>1,000 Head</i>	<i>1,000 Head</i>	<i>1,000 Head</i>	<i>Percent</i>	<i>Percent</i>
AZ	1	2	2	200	100
CA	4	7	5	125	71
CO	5	10	5	100	50
ID	1	2	1	100	50
IA	1	1	2	200	200
KS	10	20	15	150	75
NE	10	10	5	50	50
NM	3	1	2	67	200
OK	5	3	2	40	67
SD	2	1	2	100	200
TX	15	10	15	100	150
WA	1	1	1	100	100
Oth Sts	2	2	1	50	50
US	60	70	58	97	83

¹ Includes death loss, movement from feedlots to pasture, and shipments to other feedlots for further feeding.

Terms and Definitions of Cattle on Feed Estimates

Cattle on feed are animals being fed a ration of grain, silage, hay and/or protein supplement for slaughter market that are expected to produce a carcass that will grade select or better. It excludes cattle being "backgrounded only" for later sale as feeders or later placement in another feedlot.

Placements are cattle put into a feedlot, fed a ration which will produce a carcass that will grade select or better, and are intended for the slaughter market.

Marketings are cattle shipped out of feedlots to a slaughter market.

Other disappearance includes death loss, movement from feedlots to pasture, and shipments to other feedlots for further feeding.

Reliability of Cattle on Feed Estimates

Survey Procedures: During January and July all known feedlots in the U.S. with capacity of 1,000 or more head are surveyed to provide data for cattle on feed estimates. During the other months, all known feedlots from 17 States are surveyed. The 17 States account for 98 percent of the cattle on feed in feedlots with capacity of 1,000 or more head.

Estimating Procedures: These cattle on feed estimates were prepared by the Agricultural Statistics Board after reviewing recommendations and analysis submitted by each State office. Regional and State survey data were reviewed for reasonableness with each other and with estimates from the previous month when setting the current estimates.

Revision Policy: Revisions to previous estimates are made to improve month to month relationships. Estimates for the previous month are subject to revision in all States each month when current estimates are made. In February, all monthly estimates for the previous year, and the number of feedlots and annual marketings from two years ago are reviewed and subject to revisions. The reviews are primarily based on slaughter data, state check-off or brand data, and any other data that may have been received after the original estimate was made. Estimates will also be reviewed after data from the Census of Agriculture are available. No revisions will be made after that date and estimates become final.

Reliability: Since all 1000+ capacity cattle on feed operators in every State are not included in the monthly survey, survey estimates are subject to sampling variability. Survey results are also subject to non-sampling errors such as omissions, duplications, and mistakes in reporting, recording, and processing the data. The effects of these errors cannot be measured directly. They are minimized through rigid quality controls in the data collection process and through a careful review of all reported data for consistency and reasonableness.

ACCESS TO REPORTS!!

For your convenience, there are several ways to obtain NASS reports, data products, and services:

INTERNET ACCESS

All NASS reports are available free of charge on the worldwide Internet. For access, connect to the Internet and go to the NASS Home Page at: www.usda.gov/nass/. Select "Today's Reports" or Publications and then Reports Calendar or Publications and then Search, by Title or Subject.

E-MAIL SUBSCRIPTION

All NASS reports are available by subscription free of charge direct to your e-mail address. Starting with the NASS Home Page at www.usda.gov/nass/, click on **Publications**, then click on the **Subscribe by E-mail** button which takes you to the page describing e-mail delivery of reports. Finally, click on **Go to the Subscription Page** and follow the instructions.

PRINTED REPORTS OR DATA PRODUCTS

CALL OUR TOLL-FREE ORDER DESK: 800-999-6779 (U.S. and Canada)
Other areas, please call 703-605-6220 FAX: 703-605-6900
(Visa, MasterCard, check, or money order acceptable for payment.)

ASSISTANCE

For **assistance** with general agricultural statistics or further information about NASS or its products or services, contact the **Agricultural Statistics Hotline** at **800-727-9540**, 7:30 a.m. to 4:00 p.m. ET, or e-mail: nass@nass.usda.gov.

The United States Department of Agriculture (USDA) prohibits discrimination in all its programs on the basis of race, color, national origin, gender, religion, age, disability, political beliefs, sexual orientation, and marital or family status. (Not all prohibited bases apply to all programs.) Persons with disabilities who require alternative means for communication of program information (braille, large print, audiotape, etc.) should contact the USDA's TARGET Center at 202-720-2600 (voice and TDD).

To file a complaint of discrimination, write USDA, Director, Office of Civil Rights, Room 326-W, Whitten Building, 1400 Independence Avenue, SW, Washington, D.C., 20250-9410, or call 202-720-5964 (voice or TDD). USDA is an equal opportunity provider and employer.