



# Cattle on Feed

---

Released September 17, 2004, by the National Agricultural Statistics Service (NASS), Agricultural Statistics Board, U.S. Department of Agriculture. For information on *Cattle on Feed* call Mike Miller at (202) 720-3040, office hours 7:30 a.m. to 4:00 p.m. ET.

## U.S. Cattle on Feed Up 1 Percent

**Cattle and calves on feed** for slaughter market in the United States for feedlots with capacity of 1,000 or more head totaled 9.97 million head on September 1, 2004. The inventory was 1 percent above September 1, 2003 but 2 percent below September 1, 2002.

**Placements** in feedlots during August totaled 2.10 million, 12 percent below 2003 and 6 percent below 2002. This is the second lowest placements for the month of August since the series began in 1996. Net placements were 2.04 million. During August, placements of cattle and calves weighing less than 600 pounds were 506,000, 600-699 pounds were 413,000, 700-799 pounds were 565,000, and 800 pounds and greater were 615,000.

**Marketings** of fed cattle during August totaled 1.92 million, 7 percent below 2003 and 10 percent below 2002. This is the lowest fed cattle marketings for the month of August since the series began in 1996.

**Other disappearance** totaled 56,000 during August, 7 percent below 2003 but 30 percent above 2002.

**Cattle on Feed: Number on Feed, Placements, Marketings, and  
Other Disappearance, 1,000+ Capacity Feedlots,  
United States, September 1, 2002-2004**

Item	Number			2004 as % of	
	2002	2003	2004	2002	2003
	<i>1,000 Head</i>	<i>1,000 Head</i>	<i>1,000 Head</i>	<i>Percent</i>	<i>Percent</i>
On Feed Aug 1 <sup>1</sup>	10,109	9,590	9,853	97	103
Placed on Feed During Aug	2,228	2,384	2,099	94	88
Fed Cattle Marketed During Aug	2,135	2,075	1,923	90	93
Other Disappearance During Aug <sup>2</sup>	43	60	56	130	93
On Feed Sep 1 <sup>1</sup>	10,159	9,839	9,973	98	101

<sup>1</sup> Cattle and calves on feed are animals for slaughter market being fed a ration of grain or other concentrates and are expected to produce a carcass that will grade select or better.

<sup>2</sup> Includes death loss, movement from feedlots to pasture, and shipments to other feedlots for further feeding.

**Cattle on Feed: Number on Feed, Placements, Marketings, and  
Other Disappearance, 1,000+ Capacity Feedlots,  
United States, August 1, 2002-2004**

Item	Number			2004 as % of	
	2002	2003	2004	2002	2003
	<i>1,000 Head</i>	<i>1,000 Head</i>	<i>1,000 Head</i>	<i>Percent</i>	<i>Percent</i>
On Feed Jul 1 <sup>1</sup>	10,507	9,923	10,117	96	102
Placed on Feed During Jul	1,840	1,997	1,720	93	86
Fed Cattle Marketed During Jul	2,193	2,270	1,926	88	85
Other Disappearance During Jul <sup>2</sup>	45	60	58	129	97
On Feed Aug 1 <sup>1</sup>	10,109	9,590	9,853	97	103

<sup>1</sup> Cattle and calves on feed are animals for slaughter market being fed a ration of grain or other concentrates and are expected to produce a carcass that will grade select or better.

<sup>2</sup> Includes death loss, movement from feedlots to pasture, and shipments to other feedlots for further feeding.

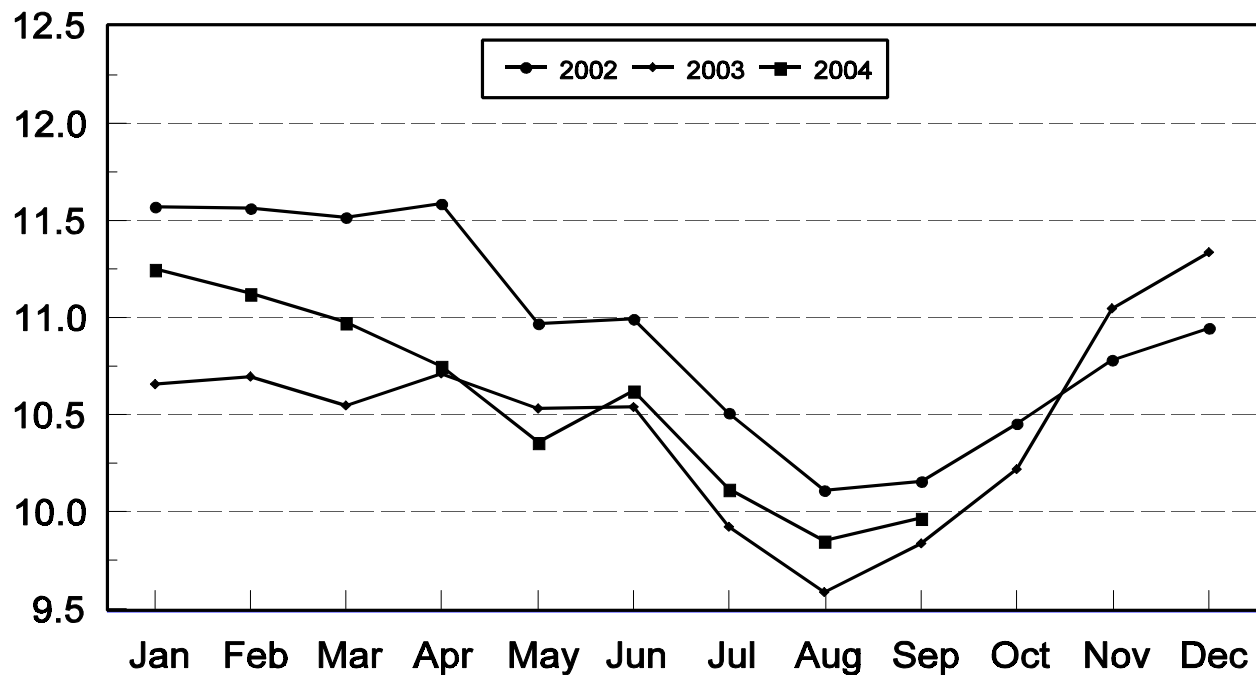
**Cattle on Feed: Number on Feed, 1,000+ Capacity Feedlots,  
by Month, State, and United States 2003-2004 <sup>1</sup>**

State	Sep 1, 2003	Aug 1, 2004	Sep 1, 2004		
			Number	as % of 2003	as % of Aug
	<i>1,000 Head</i>	<i>1,000 Head</i>	<i>1,000 Head</i>	<i>Percent</i>	<i>Percent</i>
AZ	274	294	296	108	101
CA	490	520	520	106	100
CO	900	880	930	103	106
ID	245	235	245	100	104
IA	300	380	375	125	99
KS	2,250	2,120	2,130	95	100
NE	1,660	1,750	1,800	108	103
NM	121	127	129	107	102
OK	345	315	325	94	103
SD	134	157	138	103	88
TX	2,700	2,670	2,670	99	100
WA	185	150	160	86	107
Oth Sts	235	255	255	109	100
US	9,839	9,853	9,973	101	101

<sup>1</sup> Cattle and calves on feed are animals for slaughter market being fed a ration of grain or other concentrates and are expected to produce a carcass that will grade select or better.

## United States Cattle on Feed 1,000+ Capacity Feedlots

Million Head



**Cattle on Feed: Number Placed on Feed, 1,000+ Capacity Feedlots,  
by Month, State, and United States 2003-2004**

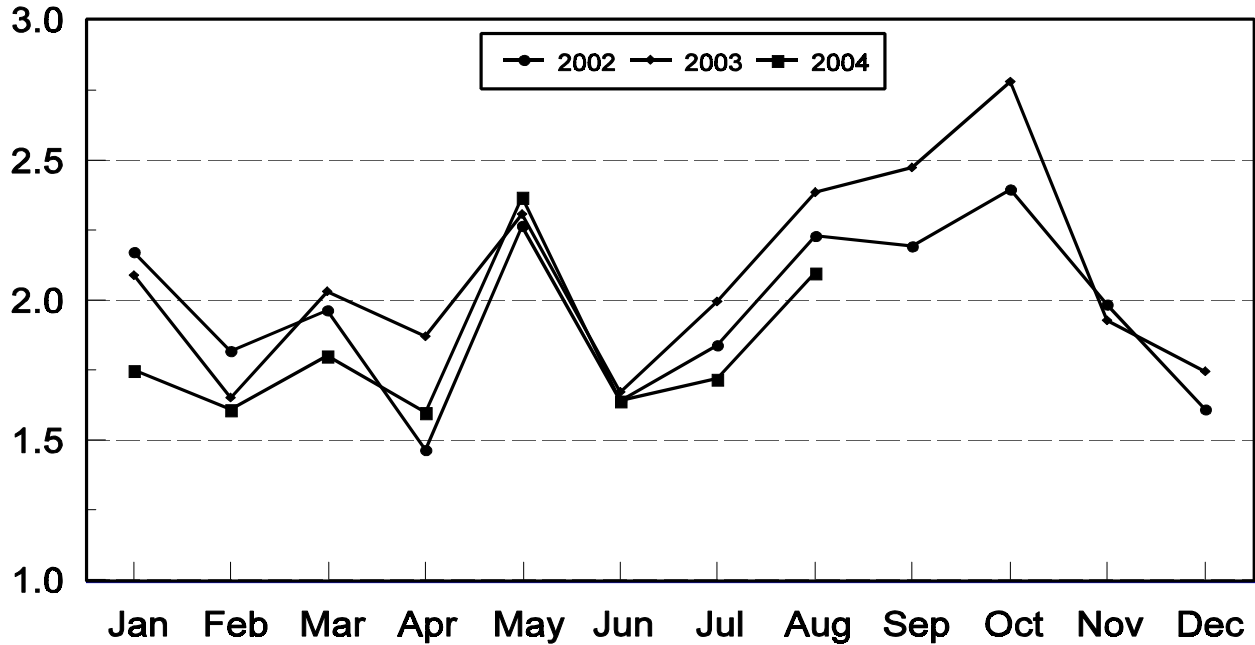
State	During Aug 2003	During Jul 2004	During Aug 2004		
			Number	as % of 2003	as % of Jul
	<i>1,000 Head</i>	<i>1,000 Head</i>	<i>1,000 Head</i>	<i>Percent</i>	<i>Percent</i>
AZ	28	32	30	107	94
CA	65	65	63	97	97
CO	240	150	205	85	137
ID	58	43	58	100	135
IA	79	52	62	78	119
KS	580	520	520	90	100
NE	470	310	420	89	135
NM	23	22	23	100	105
OK	84	61	76	90	125
SD	30	12	25	83	208
TX	610	395	530	87	134
WA	51	29	33	65	114
Oth Sts	66	29	54	82	186
US	2,384	1,720	2,099	88	122

**Cattle on Feed: Number Placed on Feed by Weight Group, 1,000+ Capacity  
Feedlots, by Month, State, and United States, 2003-2004**

State	During August									
	Under 600		600-699		700-799		800 Plus		Total	
	2003	2004	2003	2004	2003	2004	2003	2004	2003	2004
	<i>1,000 Head</i>	<i>1,000 Head</i>	<i>1,000 Head</i>	<i>1,000 Head</i>	<i>1,000 Head</i>	<i>1,000 Head</i>	<i>1,000 Head</i>	<i>1,000 Head</i>	<i>1,000 Head</i>	<i>1,000 Head</i>
CO	43	30	55	40	63	65	79	70	240	205
KS	120	115	150	100	205	180	105	125	580	520
NE	74	66	80	54	141	100	175	200	470	420
TX	220	165	170	165	150	130	70	70	610	530
Oth Sts	145	130	74	54	100	90	165	150	484	424
US	602	506	529	413	659	565	594	615	2,384	2,099
	During July									
	Under 600		600-699		700-799		800 Plus		Total	
	2003	2004	2003	2004	2003	2004	2003	2004	2003	2004
	<i>1,000 Head</i>	<i>1,000 Head</i>	<i>1,000 Head</i>	<i>1,000 Head</i>	<i>1,000 Head</i>	<i>1,000 Head</i>	<i>1,000 Head</i>	<i>1,000 Head</i>	<i>1,000 Head</i>	<i>1,000 Head</i>
CO	24	30	41	30	53	50	57	40	175	150
KS	85	90	125	105	210	190	150	135	570	520
NE	37	40	76	55	105	84	132	131	350	310
TX	155	155	115	90	125	100	80	50	475	395
Oth Sts	125	125	57	45	100	75	145	100	427	345
US	426	440	414	325	593	499	564	456	1,997	1,720

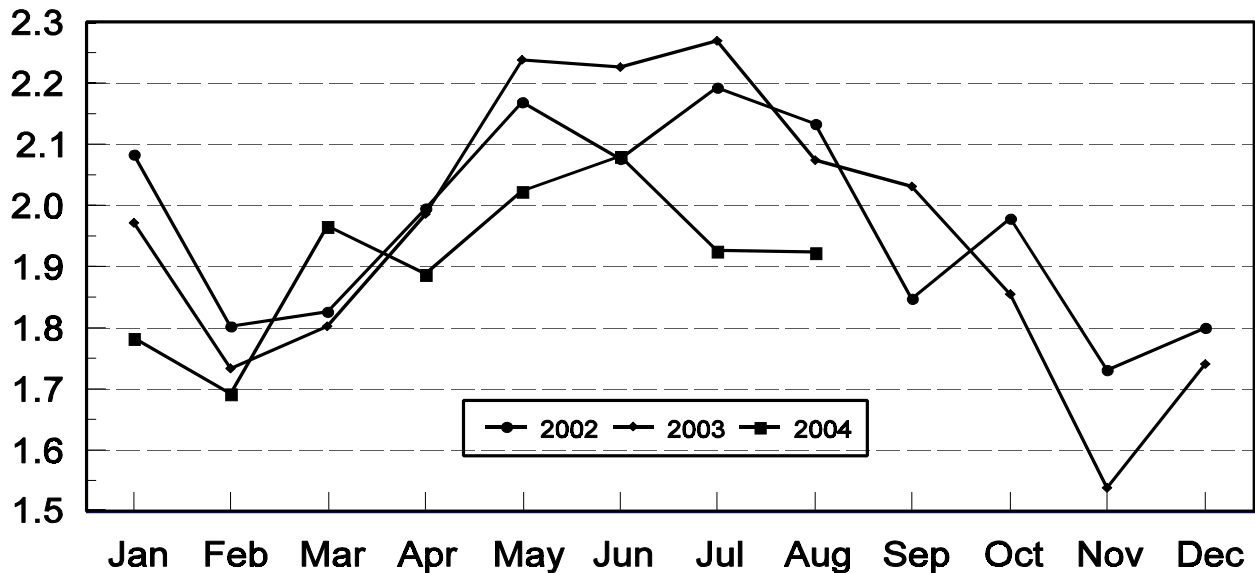
## United States Cattle on Feed 1,000+ Capacity Feedlots Number Placed

Million Head



## United States Cattle on Feed 1,000+ Capacity Feedlots Number Marketed

Million Head



**Cattle on Feed: Number Marketed, 1,000+ Capacity Feedlots,  
by Month, State, and United States 2003-2004**

State	During Aug 2003	During Jul 2004	During Aug 2004		
			Number	as % of 2003	as % of Jul
	<i>1,000 Head</i>	<i>1,000 Head</i>	<i>1,000 Head</i>	<i>Percent</i>	<i>Percent</i>
AZ	23	31	26	113	84
CA	57	60	59	104	98
CO	195	205	150	77	73
ID	52	47	47	90	100
IA	73	60	66	90	110
KS	500	475	495	99	104
NE	370	405	360	97	89
NM	15	17	19	127	112
OK	72	59	64	89	108
SD	43	26	43	100	165
TX	580	470	520	90	111
WA	35	28	22	63	79
Oth Sts	60	43	52	87	121
US	2,075	1,926	1,923	93	100

**Cattle on Feed: Other Disappearance, 1,000+ Capacity Feedlots,  
by Month, State, and United States 2003-2004 <sup>1</sup>**

State	During Aug 2003	During Jul 2004	During Aug 2004		
			Number	as % of 2003	as % of Jul
	<i>1,000 Head</i>	<i>1,000 Head</i>	<i>1,000 Head</i>	<i>Percent</i>	<i>Percent</i>
AZ	2	2	2	100	100
CA	3	5	4	133	80
CO	5	5	5	100	100
ID	1	1	1	100	100
IA	1	2	1	100	50
KS	10	15	15	150	100
NE	10	5	10	100	200
NM	3	2	2	67	100
OK	2	2	2	100	100
SD	1	2	1	100	50
TX	20	15	10	50	67
WA	1	1	1	100	100
Oth Sts	1	1	2	200	200
US	60	58	56	93	97

<sup>1</sup> Includes death loss, movement from feedlots to pasture, and shipments to other feedlots for further feeding.

## Terms and Definitions of Cattle on Feed Estimates

**Cattle on feed** are animals being fed a ration of grain, silage, hay and/or protein supplement for slaughter market that are expected to produce a carcass that will grade select or better. It excludes cattle being "backgrounded only" for later sale as feeders or later placement in another feedlot.

**Placements** are cattle put into a feedlot, fed a ration which will produce a carcass that will grade select or better, and are intended for the slaughter market.

**Marketings** are cattle shipped out of feedlots to a slaughter market.

**Other disappearance** includes death loss, movement from feedlots to pasture, and shipments to other feedlots for further feeding.

## Reliability of Cattle on Feed Estimates

**Survey Procedures:** During January and July all known feedlots in the U.S. with capacity of 1,000 or more head are surveyed to provide data for cattle on feed estimates. During the other months, all known feedlots from 17 States are surveyed. The 17 States account for 98 percent of the cattle on feed in feedlots with capacity of 1,000 or more head.

**Estimating Procedures:** These cattle on feed estimates were prepared by the Agricultural Statistics Board after reviewing recommendations and analysis submitted by each State office. Regional and State survey data were reviewed for reasonableness with each other and with estimates from the previous month when setting the current estimates.

**Revision Policy:** Revisions to previous estimates are made to improve month to month relationships. Estimates for the previous month are subject to revision in all States each month when current estimates are made. In February, all monthly estimates for the previous year, and the number of feedlots and annual marketings from two years ago are reviewed and subject to revisions. The reviews are primarily based on slaughter data, state check-off or brand data, and any other data that may have been received after the original estimate was made. Estimates will also be reviewed after data from the Census of Agriculture are available. No revisions will be made after that date and estimates become final.

**Reliability:** Since all 1000+ capacity cattle on feed operators in every State are not included in the monthly survey, survey estimates are subject to sampling variability. Survey results are also subject to non-sampling errors such as omissions, duplications, and mistakes in reporting, recording, and processing the data. The effects of these errors cannot be measured directly. They are minimized through rigid quality controls in the data collection process and through a careful review of all reported data for consistency and reasonableness.

## ACCESS TO REPORTS!!

---

For your convenience, there are several ways to obtain NASS reports, data products, and services:

### INTERNET ACCESS

All NASS reports are available free of charge on the worldwide Internet. For access, connect to the Internet and go to the NASS Home Page at: [www.usda.gov/nass/](http://www.usda.gov/nass/). Select "Today's Reports" or Publications and then Reports Calendar or Publications and then Search, by Title or Subject.

### E-MAIL SUBSCRIPTION

All NASS reports are available by subscription free of charge direct to your e-mail address. Starting with the NASS Home Page at [www.usda.gov/nass/](http://www.usda.gov/nass/), click on **Publications**, then click on the **Subscribe by E-mail** button which takes you to the page describing e-mail delivery of reports. Finally, click on **Go to the Subscription Page** and follow the instructions.

---

### PRINTED REPORTS OR DATA PRODUCTS

**CALL OUR TOLL-FREE ORDER DESK: 800-999-6779 (U.S. and Canada)**  
**Other areas, please call 703-605-6220      FAX: 703-605-6900**  
**(Visa, MasterCard, check, or money order acceptable for payment.)**

---

### ASSISTANCE

For **assistance** with general agricultural statistics or further information about NASS or its products or services, contact the **Agricultural Statistics Hotline** at **800-727-9540**, 7:30 a.m. to 4:00 p.m. ET, or e-mail: [nass@nass.usda.gov](mailto:nass@nass.usda.gov).

---

The United States Department of Agriculture (USDA) prohibits discrimination in all its programs on the basis of race, color, national origin, gender, religion, age, disability, political beliefs, sexual orientation, and marital or family status. (Not all prohibited bases apply to all programs.) Persons with disabilities who require alternative means for communication of program information (braille, large print, audiotape, etc.) should contact the USDA's TARGET Center at 202-720-2600 (voice and TDD).

To file a complaint of discrimination, write USDA, Director, Office of Civil Rights, Room 326-W, Whitten Building, 1400 Independence Avenue, SW, Washington, D.C., 20250-9410, or call 202-720-5964 (voice or TDD). USDA is an equal opportunity provider and employer.